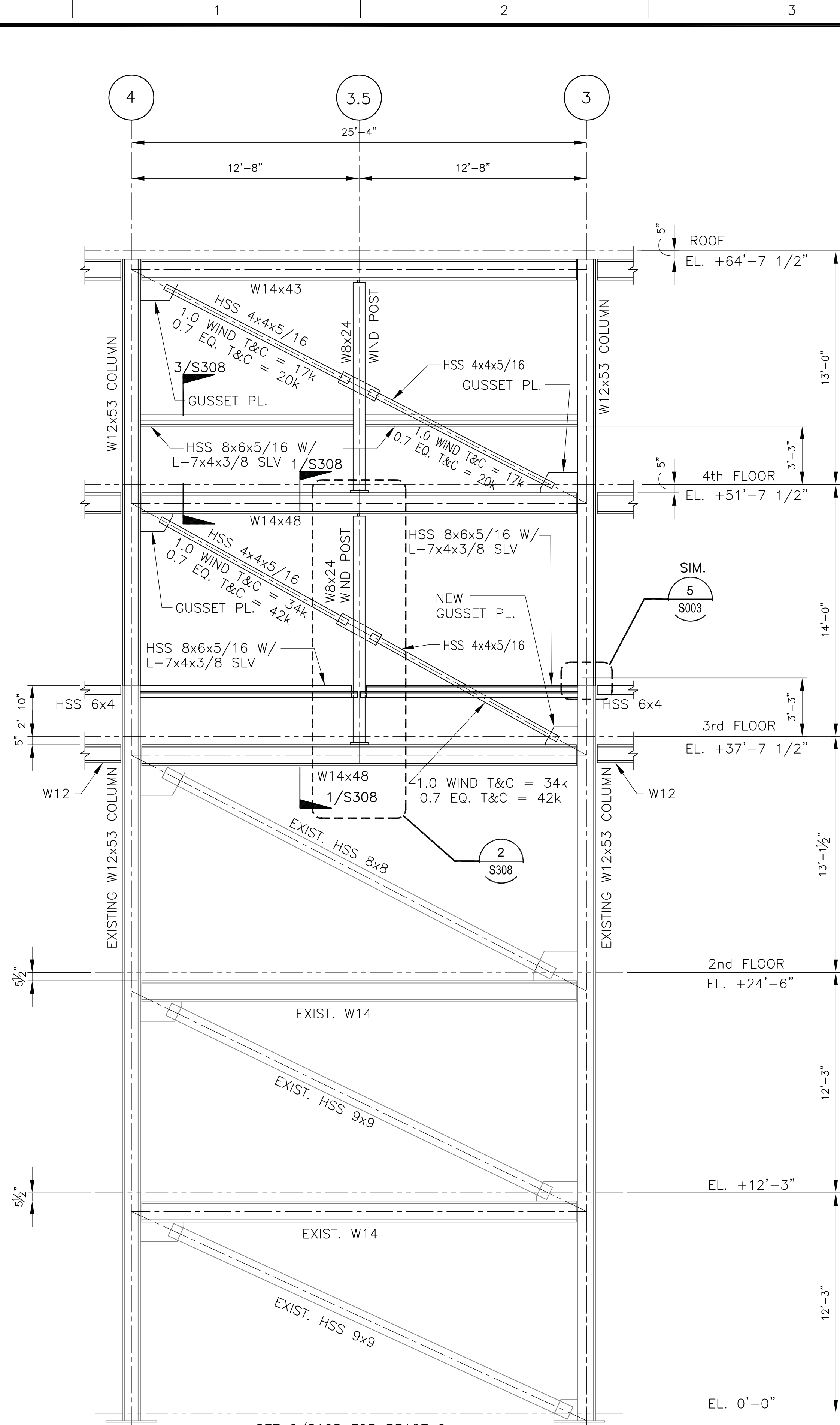


Drawing File: W3_2 Clients-Projects\3-Toland-Mizell-Molnar\2014-012 VA SHREVEPORT-EXPAND RADIOLOGY\DRAWINGS\STRUC\S201.dwg
Plotted by: eahy
Plotted Date: Mar 11, 2015 7:13pm
one-eighth inch = one foot

one-eighth inch = one foot
one-quarter inch = one foot
three-eighths inch = one foot
one-half inch = one foot
three-quarters inch = one foot
one inch = one foot
one and one-half inches = one foot
three inches = one foot



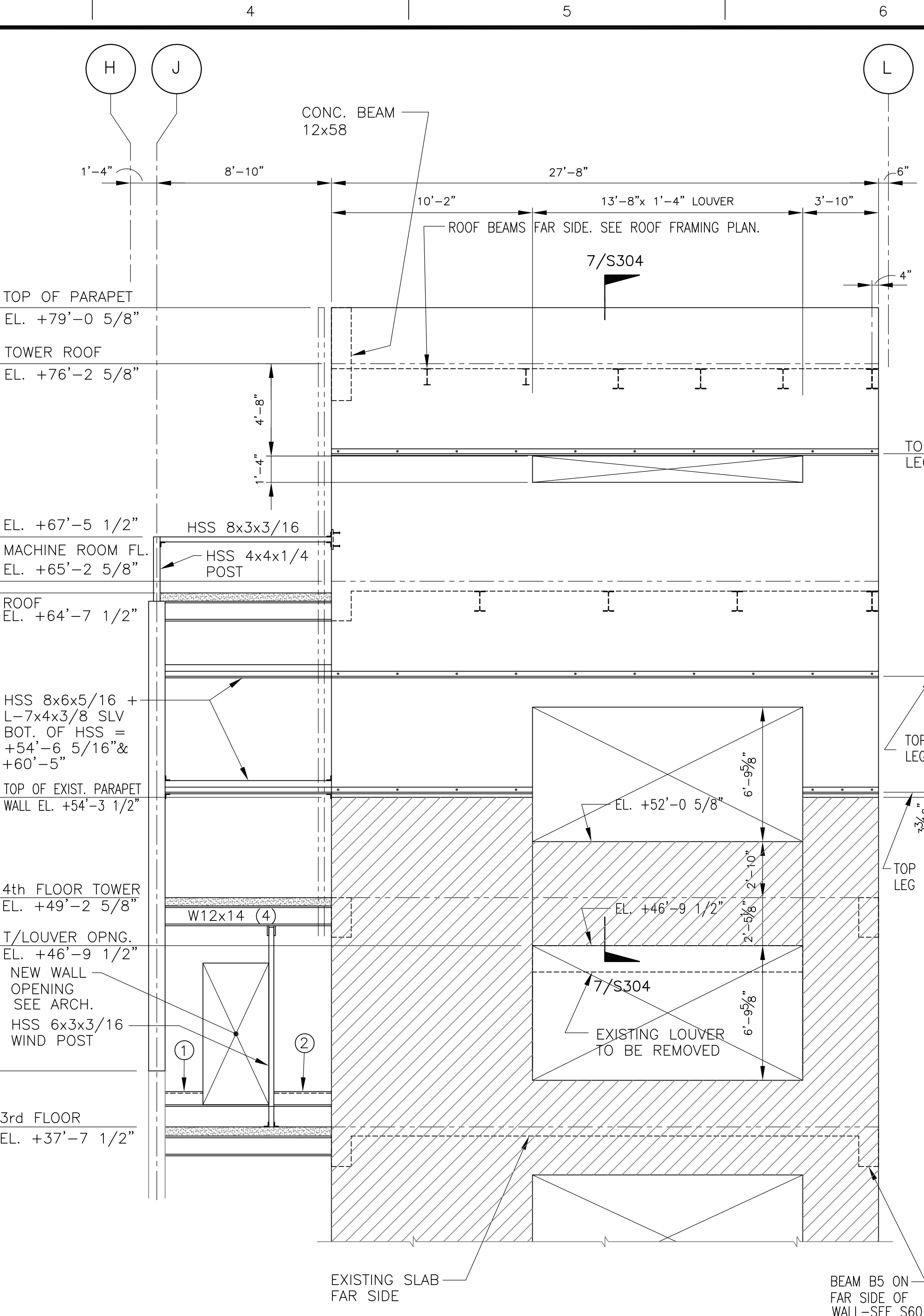
BRACING ELEVATION AT LINE B

BRACING NOTES

1. WORK POINTS FOR BRACING MEMBERS SHALL BE LOCATED WHERE THE C.G. OF THE BEAMS INTERSECTS THE C.G. OF COLUMNS.
2. CONNECTIONS SHALL BE DESIGNED FOR THE FORCES SHOWN; "T" DENOTES TENSION FORCES, "C" DENOTES COMPRESSIVE FORCES.
3. WELDS FOR WELDED CONNECTIONS SHALL BE BALANCED ABOUT THE C.G. OF THE BRACING MEMBER.
4. GUSSET PLATE THICKNESS SHALL BE 1/2 INCHES U.N.O.. GUSSET PLATES SHALL BE DESIGNED BY THE FABRICATOR AND PROPORTIONED SO THAT THEIR WIDTH IS ENOUGH TO ALLOW WELDED CONNECTIONS & THEIR MINIMUM CROSS SECTIONAL AREA IS NOT LESS THAN THAT OF THE BRACING MEMBERS. THE CONNECTION DESIGN OF THE GUSSET PLATE TO COLUMN BASE PLATES, COLUMNS OR BEAMS SHALL TAKE INTO ACCOUNT ALL FORCES AND ECCENTRICITIES.

NOTES FOR 2/S201

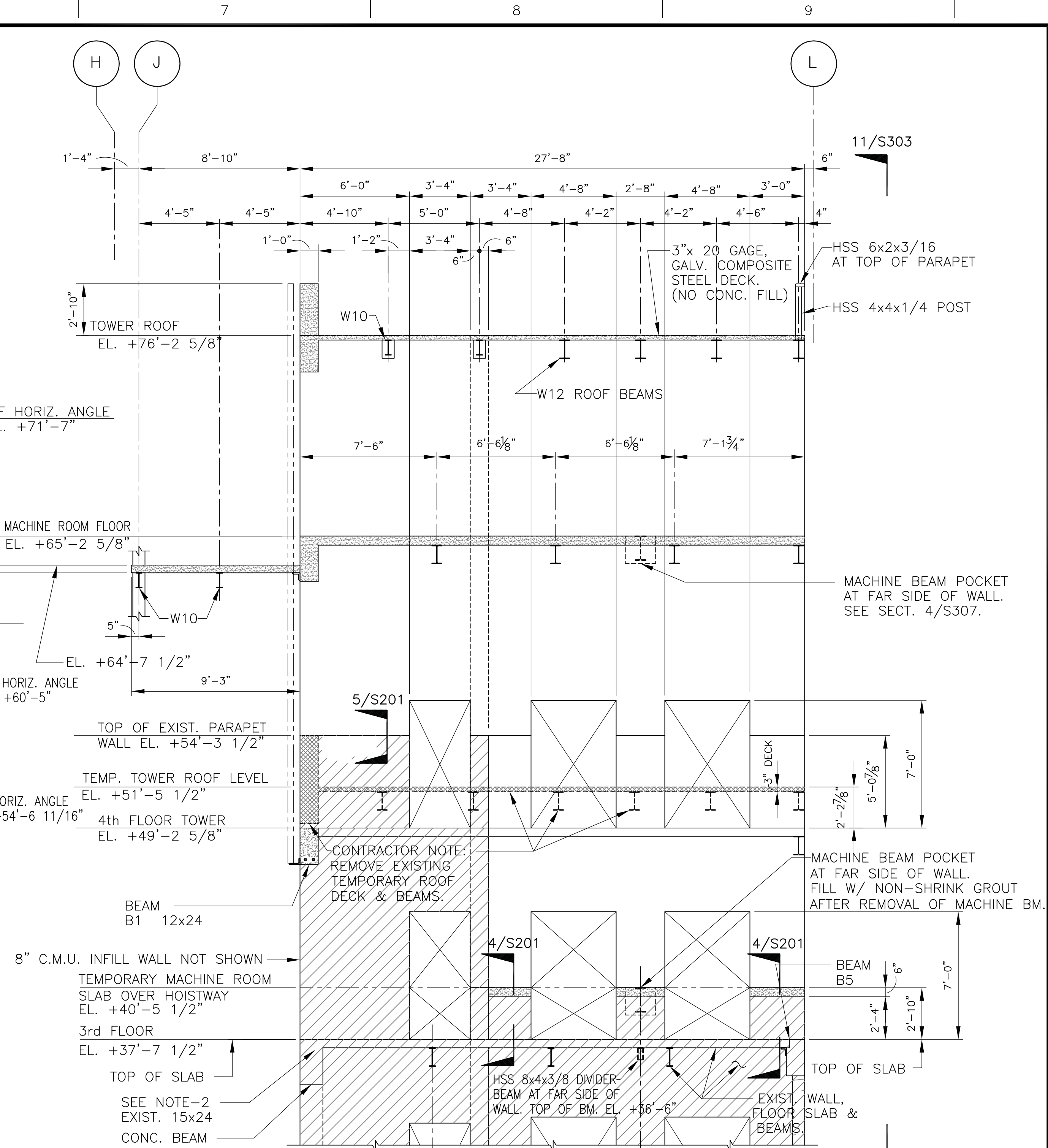
- ① HSS 8x6x5/16 + L-7x4x3/8 SLV. CANTILEVERED ±1'-2" FROM COL. J-4.5. TO DOOR JAMB, BOT. OF HSS = +38'-9". MOMENT = 483 FT.-LBS., SHEAR = 800 LBS. (ALLOW STRESS ALL)
- ② HSS8x6x5/16 + L-7x4x3/8 SLV. SPANS BETWEEN SOUTH TOWER WALL TO HSS 6x3x3/16 WIND POST. TORQUE EA. END = 962 FT.-LBS. EACH END.



SHEAR WALL ELEVATION AT LINE 4.5

SECTION

3/4"=1'-0"



SHEAR WALL ELEVATION NEAR LINE 5

1/4"=1'-0" REINFORCE WALL W/#5@12" O/C E.W. E.F.

SECTION

3/4"=1'-0"

NOTE-2
PROVIDE 3/4"Ø x 7 1/2" HOLES FOR #5 VERT. REINF. SET #5'S IN HOLES USING EPOXY ADHESIVE. PROVIDE 7" EMBEDMENT.

| | | | | | | | | | | | | | |
|------------|--|---|--|---|--|----------------------------|--|---|--|-----------------------|--|--|--|
| | | CONSULTANTS: | | ARCHITECT: | | Drawing Title: | | Project Title: | | Project Number: | | OFFICE OF CONSTRUCTION AND FACILITIES MANAGEMENT | |
| | |  PADGETT Engineering Group Consulting Structural Engineers 2255 CUMBERLAND PARKWAY - SUITE 1910 - ATLANTA - GEORGIA 30339 | |  TOLAND MIZELL MOLNAR 590 Means Street NW, Suite 200 Atlanta, GA 30318 404.214.9774 | | ELEVATIONS | | EXPAND RADIOLOGY AND SPS OVERTON BROOKS VAMC | | 667-083 | | | |
| | | | | | | Approved: Project Director | | Location: SHREVEPORT, LA | | Building Number: 1 | | | |
| Revisions: | | | | | | | | Date: | | Date: 3-13-2015 | | | |
| | | | | LOUISIANA C.O.A. 4674 | | | | | | S201 | | VA  U.S. Department of Veterans Affairs | |
| | | | | 3/11/15 | | | | | | Dwg. of XX | | | |