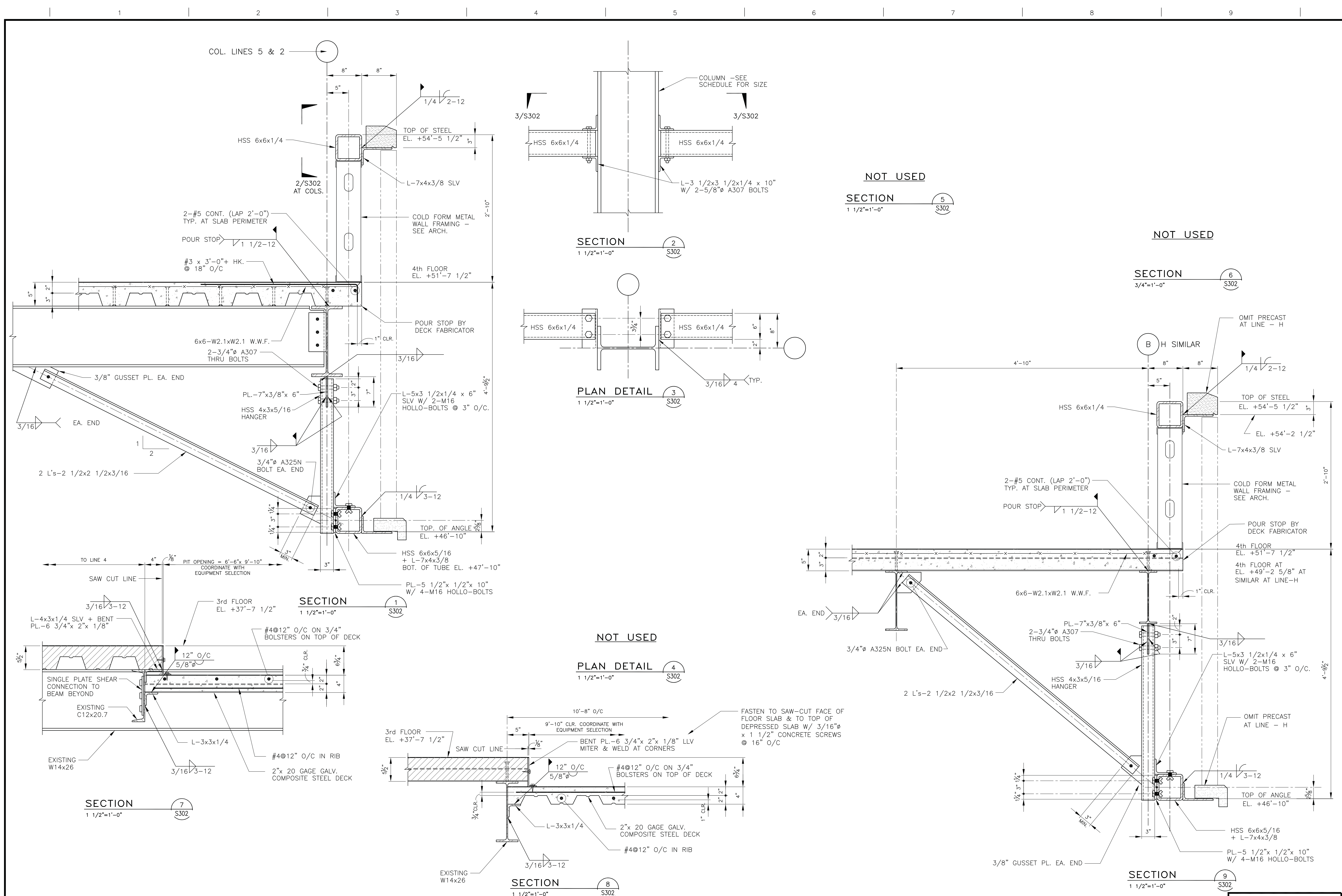


Drawing File: W3\_3 Clients-Projects\3-Toland-Mizell-Molnar\2014-012 VA SHREVEPORT-EXPAND RADIOLOGY\DRAWINGS\STRUCT\302.dwg  
Plotted by: ashy  
Plotted Date: Mar 11, 2015 - 7:14pm  
one-eighth inch = one foot

one-eighth inch = one foot  
one-quarter inch = one foot  
three-eighths inch = one foot  
one-half inch = one foot  
three-quarters inch = one foot  
one inch = one foot  
one and one-half inches = one foot  
two inches = one foot  
three inches = one foot  
four inches = one foot  
five inches = one foot  
six inches = one foot  
seven inches = one foot  
eight inches = one foot  
nine inches = one foot  
ten inches = one foot  
eleven inches = one foot  
twelve inches = one foot  
thirteen inches = one foot  
fourteen inches = one foot  
fifteen inches = one foot  
sixteen inches = one foot  
seventeen inches = one foot  
eighteen inches = one foot  
nineteen inches = one foot  
twenty inches = one foot  
twenty-one inches = one foot  
twenty-two inches = one foot  
twenty-three inches = one foot  
twenty-four inches = one foot  
twenty-five inches = one foot  
twenty-six inches = one foot  
twenty-seven inches = one foot  
twenty-eight inches = one foot  
twenty-nine inches = one foot  
thirty inches = one foot  
thirty-one inches = one foot  
thirty-two inches = one foot  
thirty-three inches = one foot  
thirty-four inches = one foot  
thirty-five inches = one foot  
thirty-six inches = one foot  
thirty-seven inches = one foot  
thirty-eight inches = one foot  
thirty-nine inches = one foot  
forty inches = one foot  
forty-one inches = one foot  
forty-two inches = one foot  
forty-three inches = one foot  
forty-four inches = one foot  
forty-five inches = one foot  
forty-six inches = one foot  
forty-seven inches = one foot  
forty-eight inches = one foot  
forty-nine inches = one foot  
fifty inches = one foot  
fifty-one inches = one foot  
fifty-two inches = one foot  
fifty-three inches = one foot  
fifty-four inches = one foot  
fifty-five inches = one foot  
fifty-six inches = one foot  
fifty-seven inches = one foot  
fifty-eight inches = one foot  
fifty-nine inches = one foot  
sixty inches = one foot  
sixty-one inches = one foot  
sixty-two inches = one foot  
sixty-three inches = one foot  
sixty-four inches = one foot  
sixty-five inches = one foot  
sixty-six inches = one foot  
sixty-seven inches = one foot  
sixty-eight inches = one foot  
sixty-nine inches = one foot  
seventy inches = one foot  
seventy-one inches = one foot  
seventy-two inches = one foot  
seventy-three inches = one foot  
seventy-four inches = one foot  
seventy-five inches = one foot  
seventy-six inches = one foot  
seventy-seven inches = one foot  
seventy-eight inches = one foot  
seventy-nine inches = one foot  
eighty inches = one foot  
eighty-one inches = one foot  
eighty-two inches = one foot  
eighty-three inches = one foot  
eighty-four inches = one foot  
eighty-five inches = one foot  
eighty-six inches = one foot  
eighty-seven inches = one foot  
eighty-eight inches = one foot  
eighty-nine inches = one foot  
ninety inches = one foot  
ninety-one inches = one foot  
ninety-two inches = one foot  
ninety-three inches = one foot  
ninety-four inches = one foot  
ninety-five inches = one foot  
ninety-six inches = one foot  
ninety-seven inches = one foot  
ninety-eight inches = one foot  
ninety-nine inches = one foot  
one hundred inches = one foot



<b>Revisions:</b> 		<b>CONSULTANTS:</b>  <b>PADGETT</b> Engineering Group Consulting Structural Engineers 2255 CUMBERLAND PARKWAY - SUITE 1910 - ATLANTA - GEORGIA 30339		 LOUISIANA C.O.A. 4674		<b>ARCHITECT:</b>  <b>TOLAND MIZELL MOLNAR</b> 590 Means Street NW, Suite 200 Atlanta, GA 30318 404.214.9774		Drawing Title: <b>SECTIONS &amp; DETAILS</b>		Project Title: <b>EXPAND RADIOLOGY AND SPS OVERTON BROOKS VAMC</b>		Project Number: <b>667-083</b>		<b>FINAL SUBMITTAL</b>  <b>OFFICE OF CONSTRUCTION AND FACILITIES MANAGEMENT</b>  U.S. Department of Veterans Affairs	
Approved: Project Director		Location: <b>SHREVEPORT, LA</b>		Date: <b>3-13-2015</b>		Checked: <b>BP</b>		Drawn: <b>AH</b>		Building Number: <b>1</b>		Drawing Number: <b>S302</b>			
										Dwg. of XX					