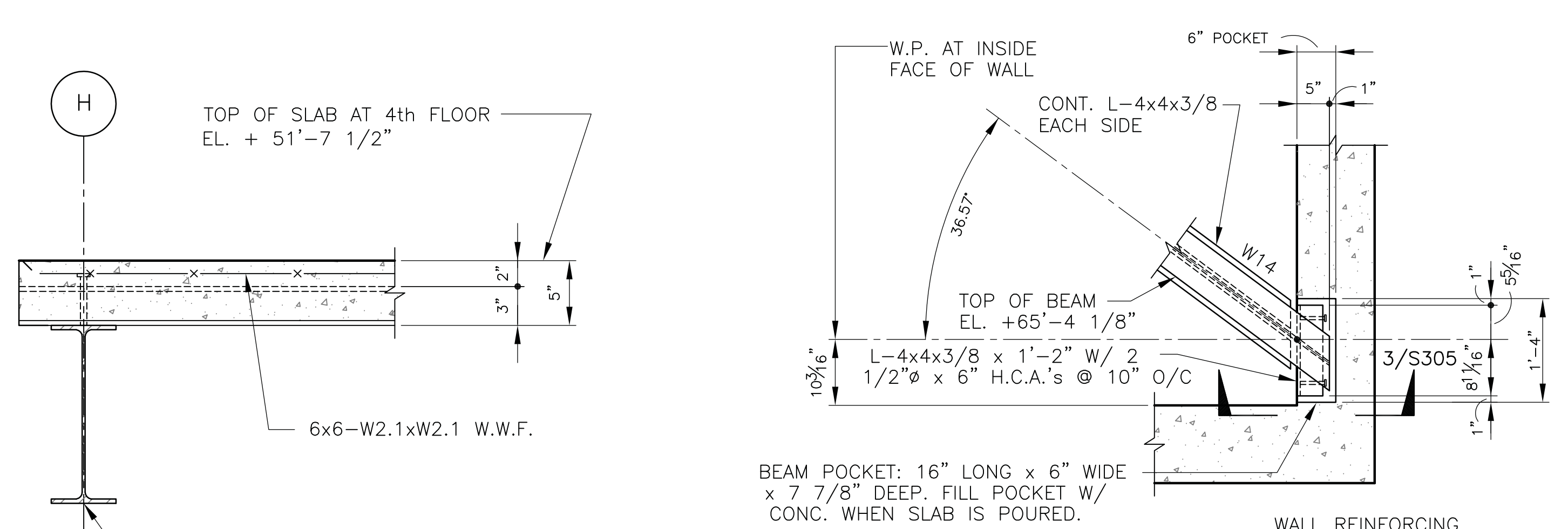
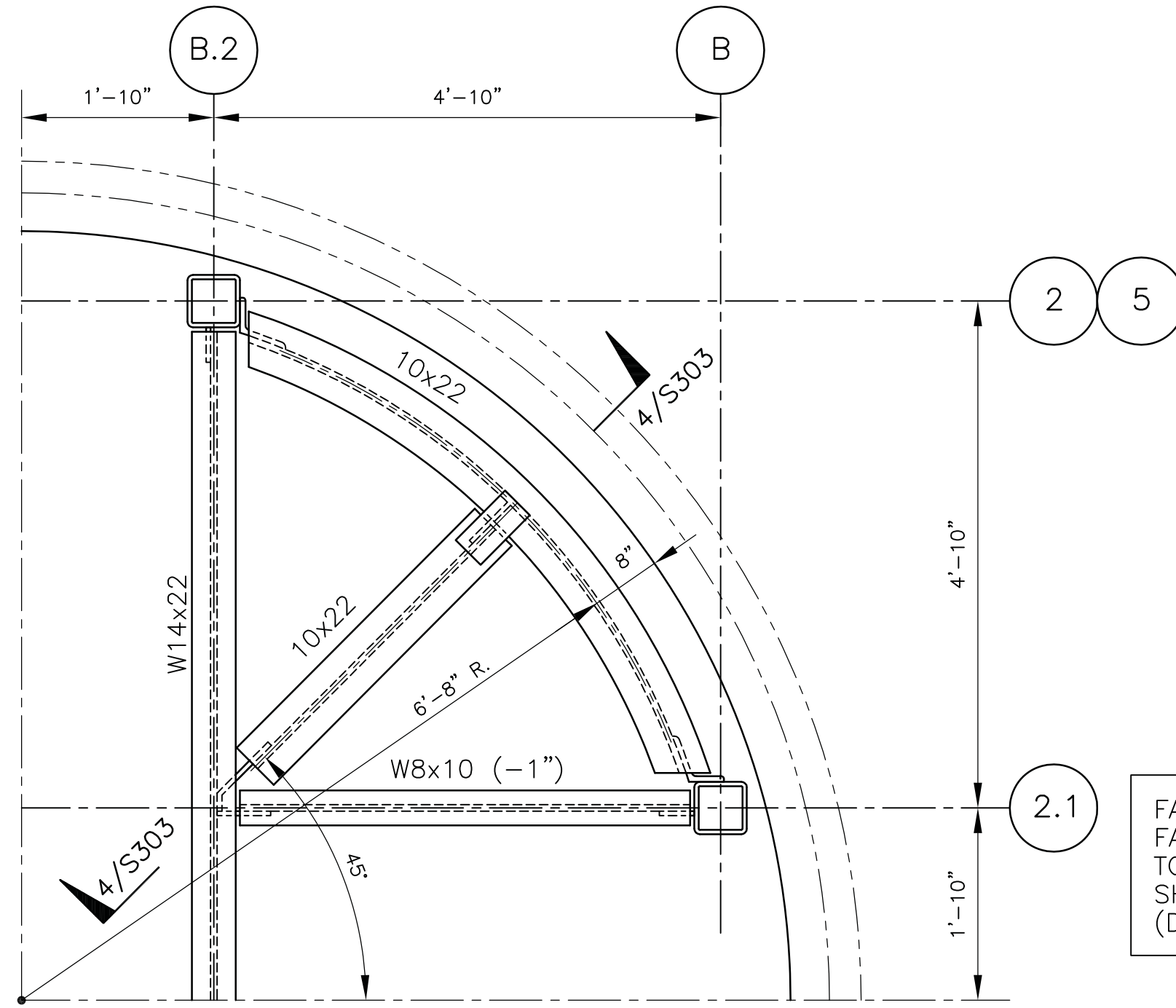


Plotting File: W:\3 Clients-Projects\3-Toland-Mizell-Molnar\2014-012 VA SHREVEPORT-EXPAND RADIOLOGY\DRAWINGS\STRUC\S303.dwg
Plotted by: g11tom
Plotted Date: Mar 12, 2015 - 9:11am

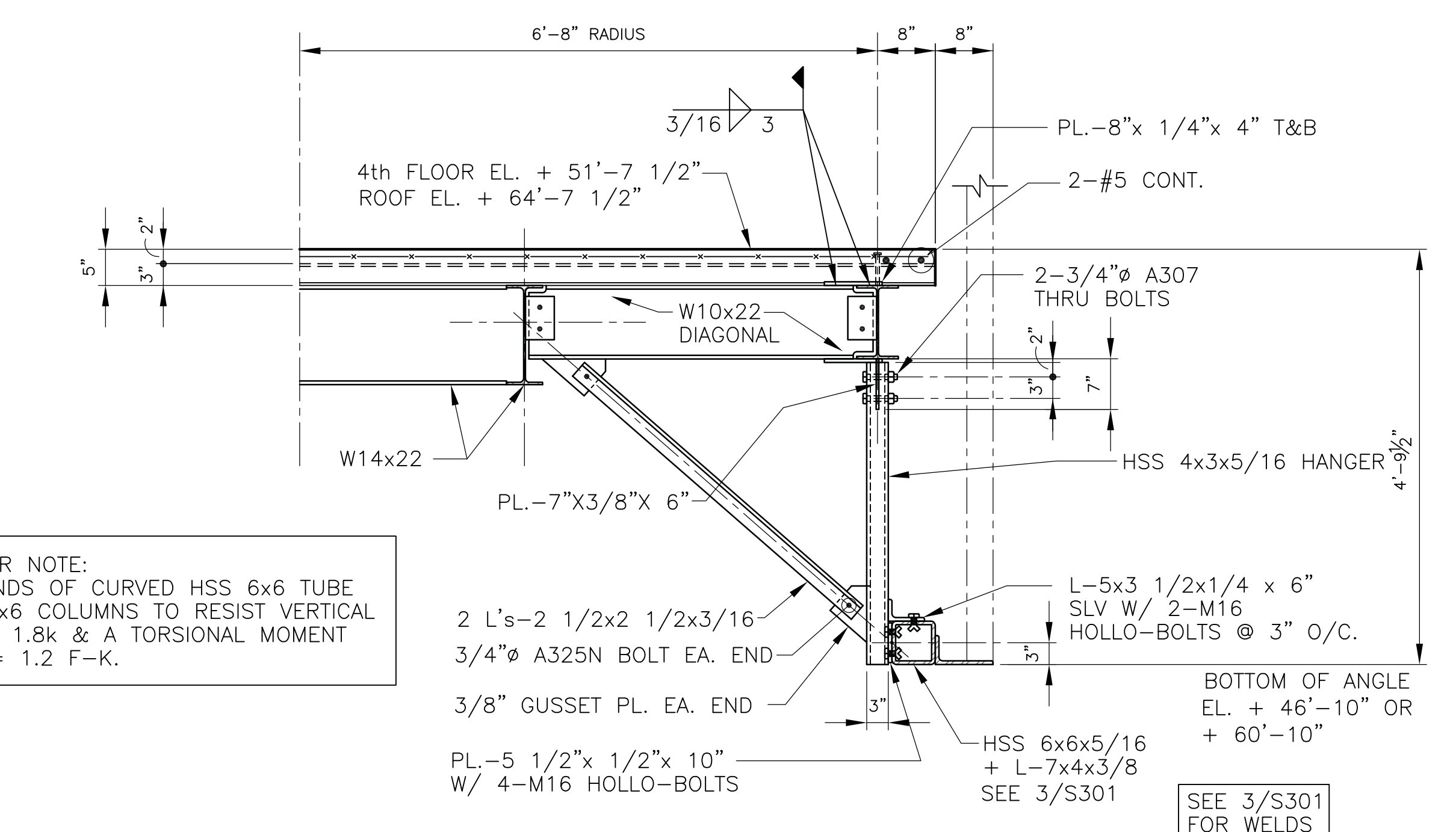
one-eighth inch = one foot
one-quarter inch = one foot
three-eighths inch = one foot
one-half inch = one foot
three-quarters inch = one foot
one inch = one foot
one and one-half inches = one foot
two inches = one foot
three inches = one foot



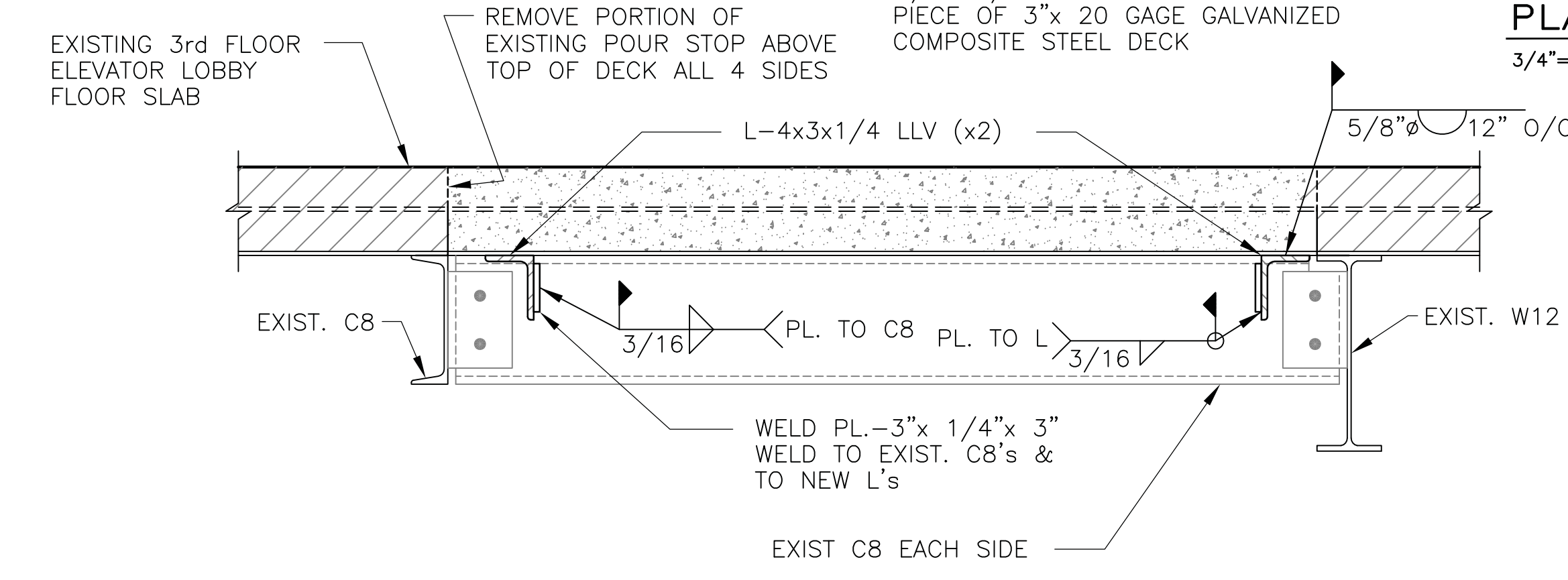
PLAN DETAIL 2
3/4"=1'-0"



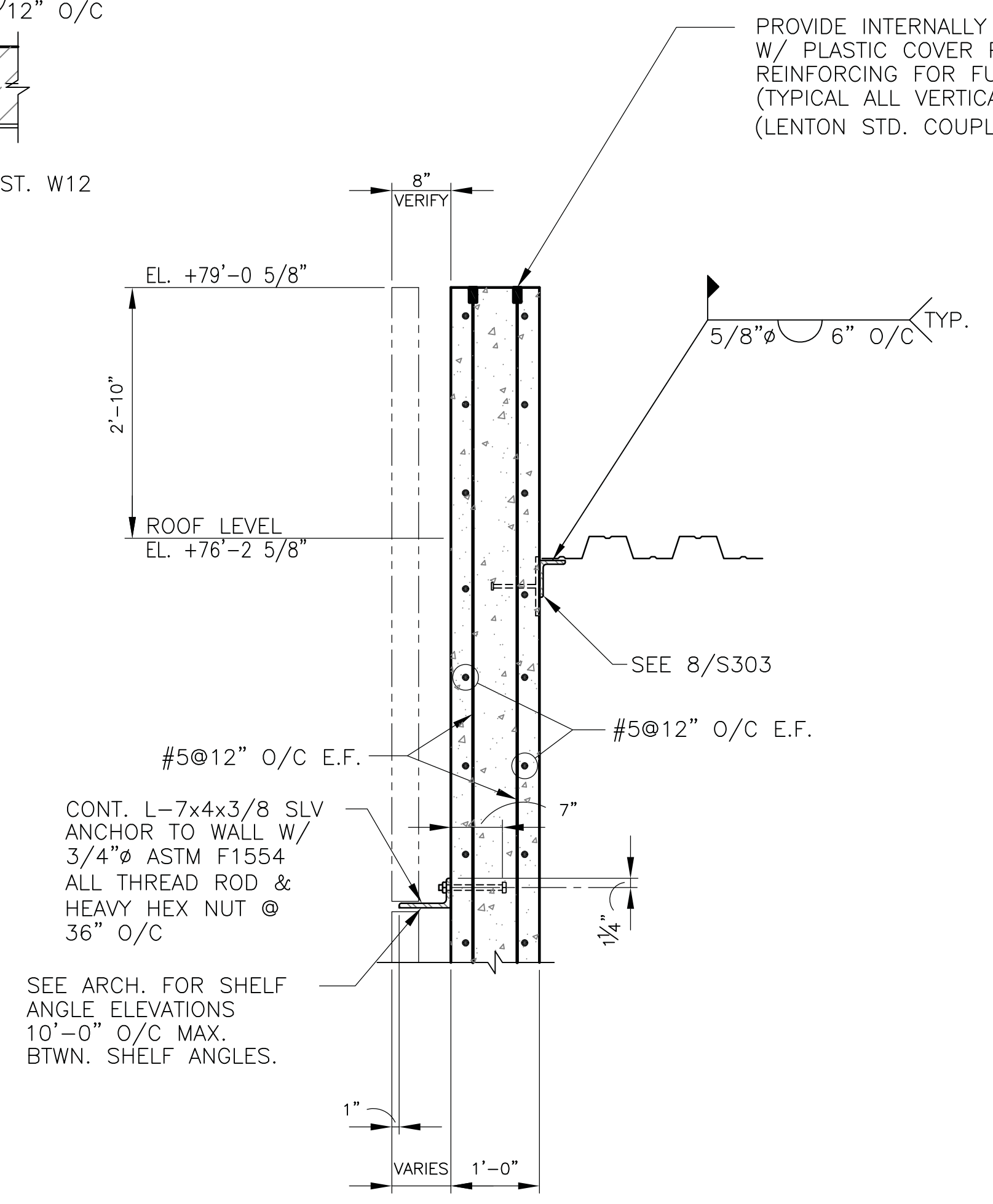
PLAN DETAIL 3
3/4"=1'-0"



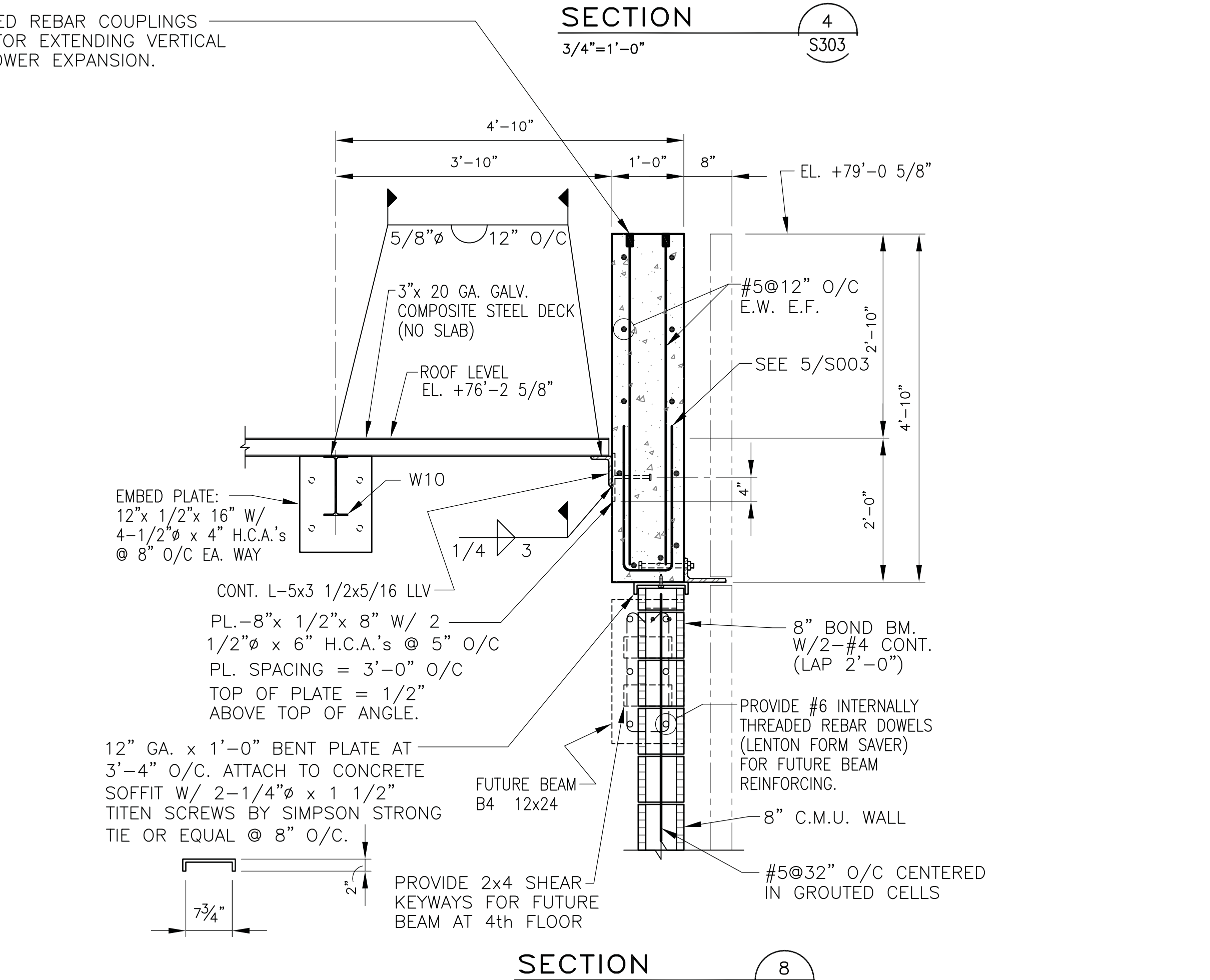
SECTION 4
3/4"=1'-0"



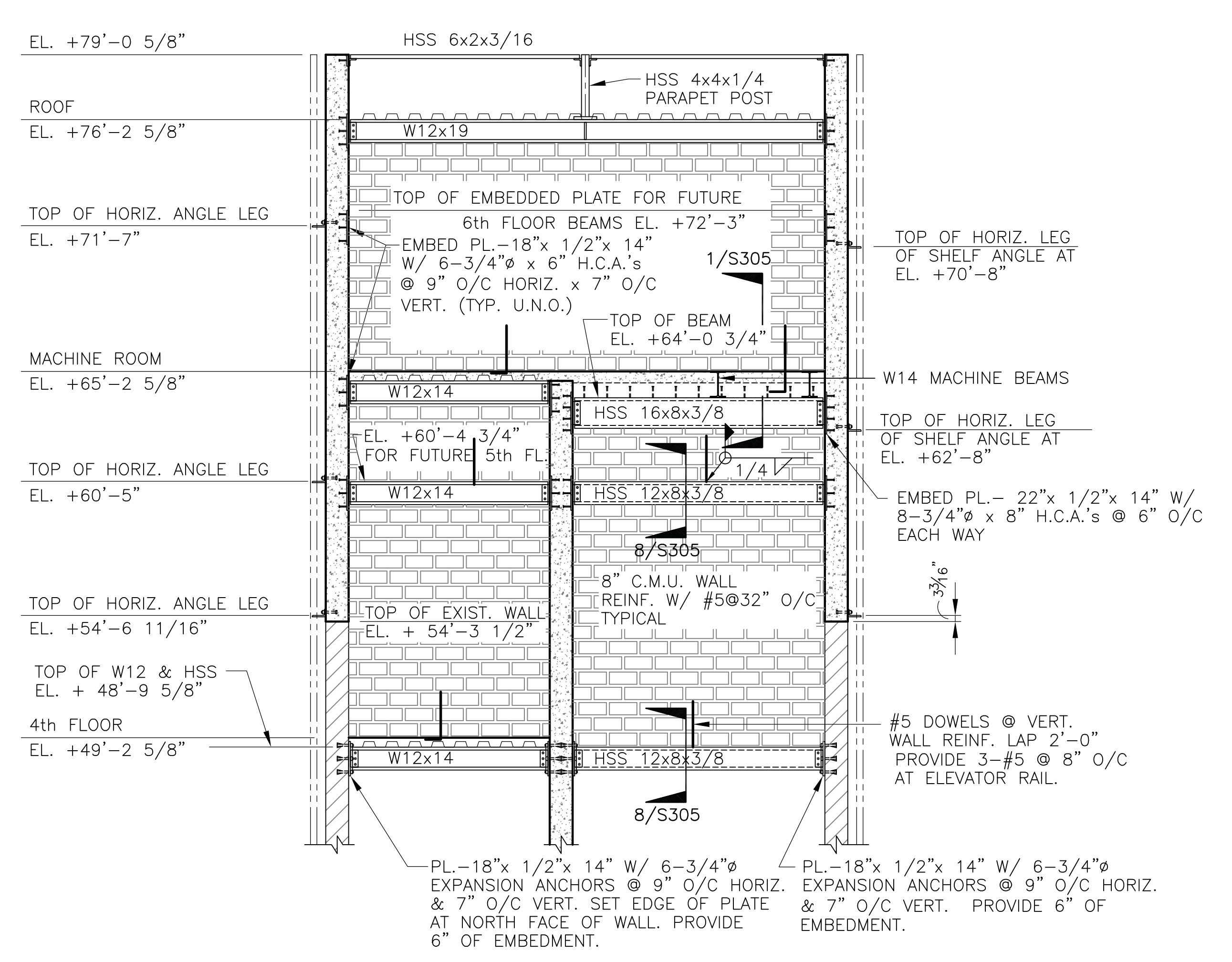
SECTION 6
3/4"=1'-0"



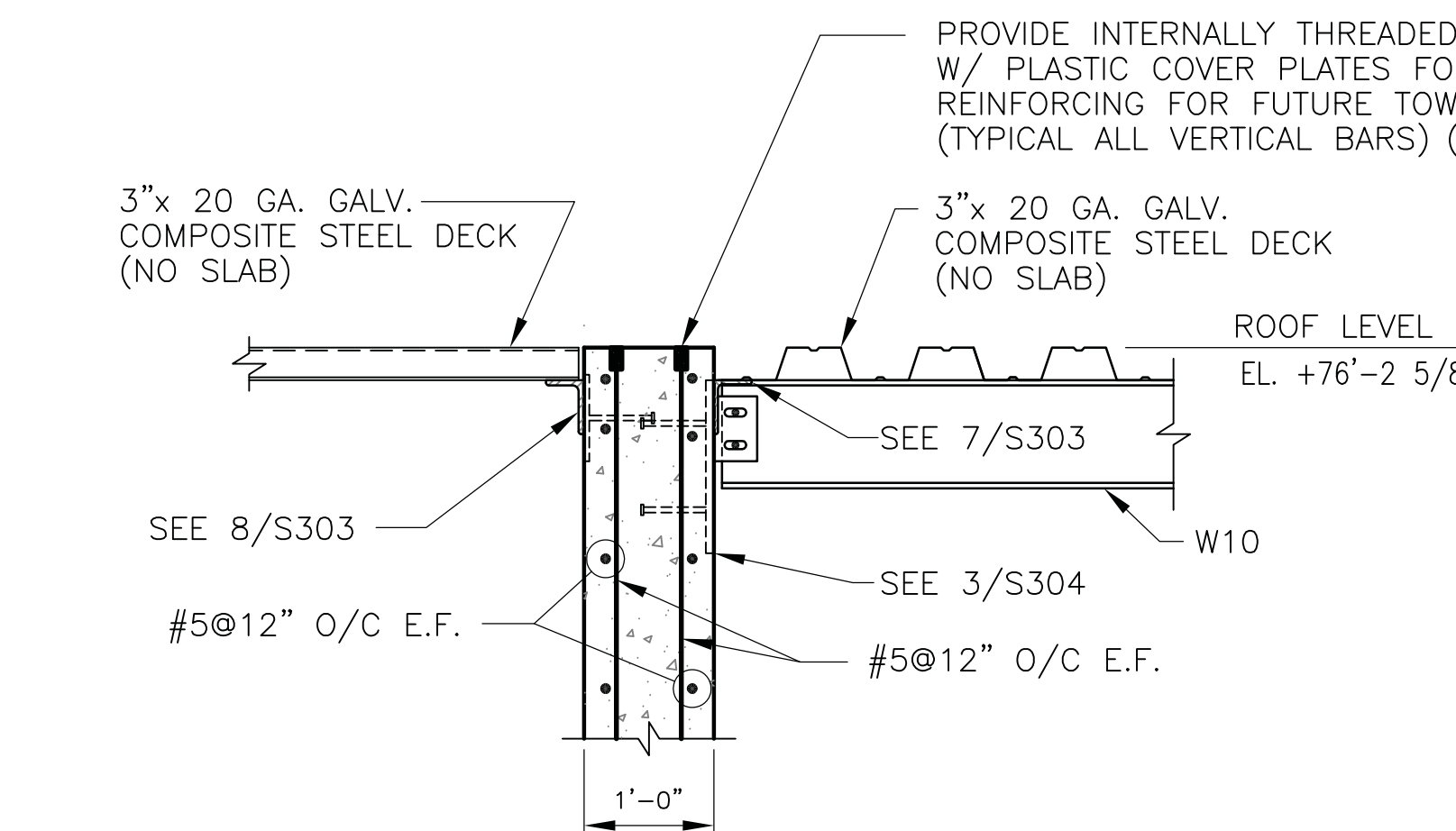
SECTION 7
3/4"=1'-0"



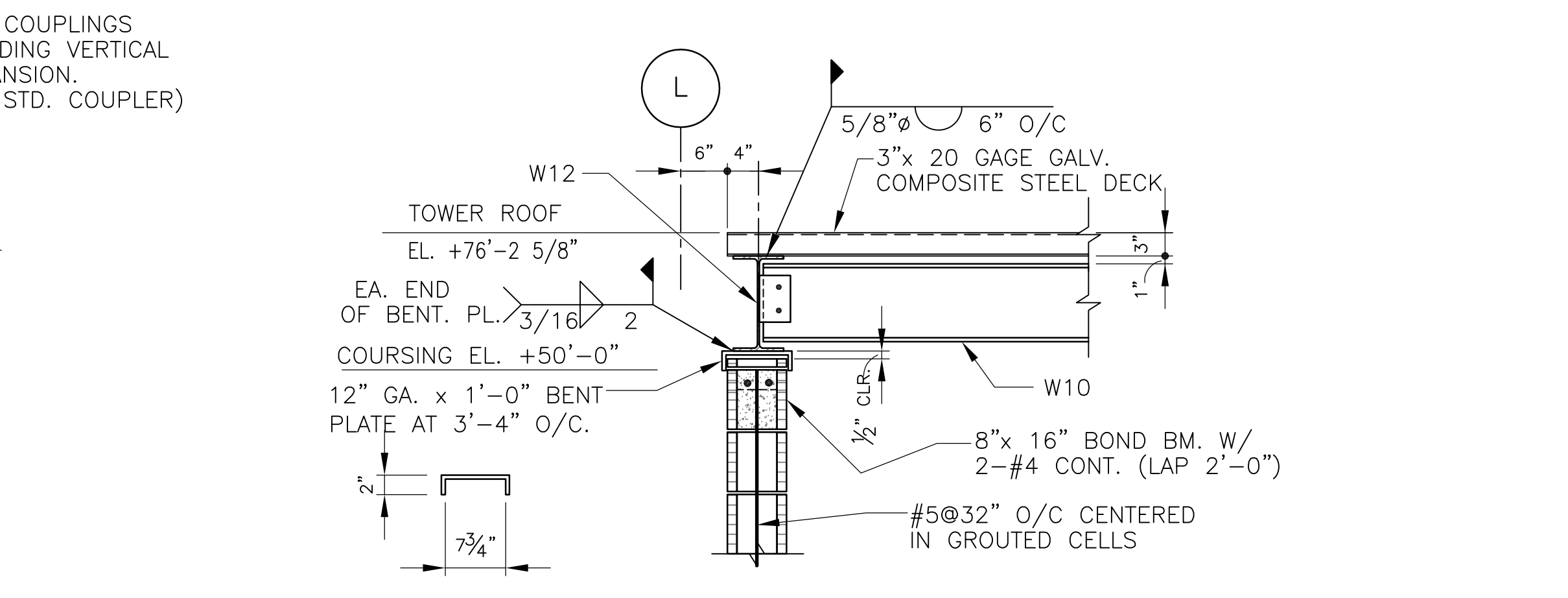
SECTION 8
3/4"=1'-0"



ELEVATION 5
1/4"=1'-0"



SECTION 9
3/4"=1'-0"



SECTION 10
3/4"=1'-0"

CONSULTANTS: 2255 CUMBERLAND PARKWAY - SUITE 1910 - ATLANTA - GEORGIA 30339		ARCHITECT: 590 Means Street NW, Suite 200 Atlanta, GA 30318 404.214.9774	Drawing Title: SECTIONS & DETAILS	Project Title: EXPAND RADIOLOGY AND SPS OVERTON BROOKS VAMC	Project Number: 667-083	OFFICE OF CONSTRUCTION AND FACILITIES MANAGEMENT
			Approved: Project Director	Location: SHREVEPORT, LA	Building Number: 1	
				Date: 3-13-2015	Drawing Number: S303	

VA FORM 08-6231A, MAR 1984