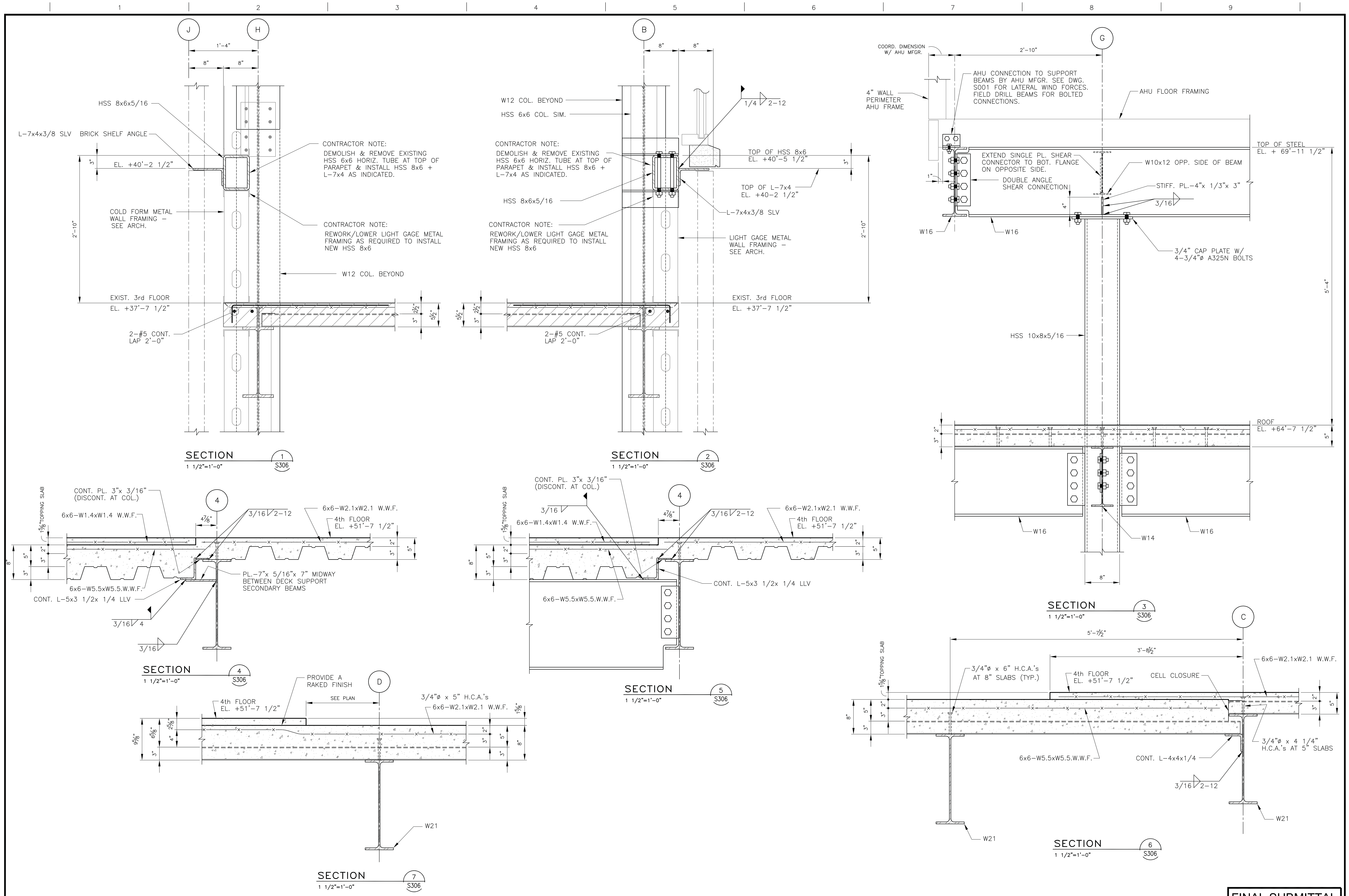


Drawing File: W3 Clients-Projects\3-Toland-Mizell-Molnar\2014-012 VA SHREVEPORT-EXPAND RADIOLOGY\DRAWINGS\STRUC\S306.dwg
Plotted by: csh
Plotted Date: Mar 11, 2015 7:19pm
one-eighth inch = one foot
one-quarter inch = one foot
one-half inch = one foot
one inch = one foot
three-quarters inch = one foot
one and one-half inches = one foot
three inches = one foot



		CONSULTANTS:		<div><div>PADGETT Engineering Group Consulting Structural Engineers 2255 CUMBERLAND PARKWAY - SUITE 1910 - ATLANTA - GEORGIA 30339</div></div>		<div><div>ROBERT C. PADGETT LICENSED PROFESSIONAL ENGINEER 3/11/15 LOUISIANA C.O.A 4674</div></div>		ARCHITECT:		<div><div>TOLAND MIZELL MOLNAR</div></div> <div>590 Means Street NW, Suite 200 Atlanta, GA 30318 404.214.9774</div>		Drawing Title: SECTIONS & DETAILS		Project Number: 667-083		Project Title: EXPAND RADIOLOGY AND SPS OVERTON BROOKS VAMC		Building Number: 1		Office of CONSTRUCTION AND FACILITIES MANAGEMENT	
								Approved: Project Director		Location: SHREVEPORT, LA		Drawing Number: S306		VA 							
Revisions:										Date: 3-13-2015		Checked: BP		Drawn: AH		Dwg. of XX					
Date:																					