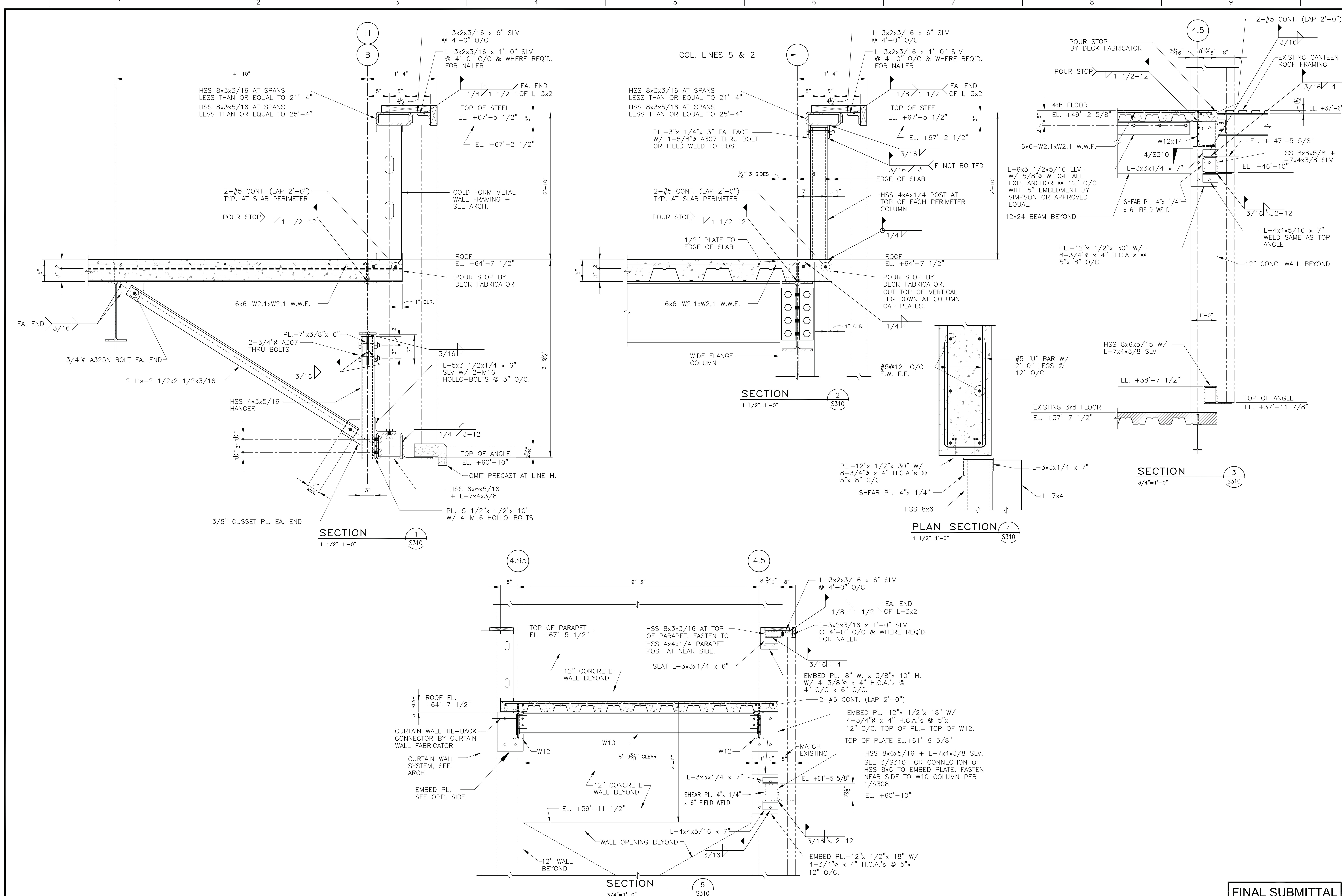


Drawing File: W3 Clients-Projects\2-Toland-Mizell-Molnar\2014-012 VA SHREVEPORT-EXPAND RADIOLOGY\DRAWINGS\STRUC\S310.dwg  
Plotted by: coby  
Plotted Date: Mar 11, 2015 7:24pm  
one-eighth inch = one foot  
one-quarter inch = one foot  
one-half inch = one foot  
three-eighths inch = one foot  
one inch = one foot  
one and one-half inches = one foot  
two inches = one foot  
three inches = one foot  
four inches = one foot  
five inches = one foot  
six inches = one foot  
seven inches = one foot  
eight inches = one foot  
nine inches = one foot  
ten inches = one foot  
eleven inches = one foot  
twelve inches = one foot  
thirteen inches = one foot  
fourteen inches = one foot  
fifteen inches = one foot  
sixteen inches = one foot  
seventeen inches = one foot  
eighteen inches = one foot  
nineteen inches = one foot  
twenty inches = one foot  
twenty-one inches = one foot  
twenty-two inches = one foot  
twenty-three inches = one foot  
twenty-four inches = one foot  
twenty-five inches = one foot  
twenty-six inches = one foot  
twenty-seven inches = one foot  
twenty-eight inches = one foot  
twenty-nine inches = one foot  
thirty inches = one foot  
thirty-one inches = one foot  
thirty-two inches = one foot  
thirty-three inches = one foot  
thirty-four inches = one foot  
thirty-five inches = one foot  
thirty-six inches = one foot  
thirty-seven inches = one foot  
thirty-eight inches = one foot  
thirty-nine inches = one foot  
forty inches = one foot  
forty-one inches = one foot  
forty-two inches = one foot  
forty-three inches = one foot  
forty-four inches = one foot  
forty-five inches = one foot  
forty-six inches = one foot  
forty-seven inches = one foot  
forty-eight inches = one foot  
forty-nine inches = one foot  
fifty inches = one foot  
fifty-one inches = one foot  
fifty-two inches = one foot  
fifty-three inches = one foot  
fifty-four inches = one foot  
fifty-five inches = one foot  
fifty-six inches = one foot  
fifty-seven inches = one foot  
fifty-eight inches = one foot  
fifty-nine inches = one foot  
sixty inches = one foot  
sixty-one inches = one foot  
sixty-two inches = one foot  
sixty-three inches = one foot  
sixty-four inches = one foot  
sixty-five inches = one foot  
sixty-six inches = one foot  
sixty-seven inches = one foot  
sixty-eight inches = one foot  
sixty-nine inches = one foot  
seventy inches = one foot  
seventy-one inches = one foot  
seventy-two inches = one foot  
seventy-three inches = one foot  
seventy-four inches = one foot  
seventy-five inches = one foot  
seventy-six inches = one foot  
seventy-seven inches = one foot  
seventy-eight inches = one foot  
seventy-nine inches = one foot  
eighty inches = one foot  
eighty-one inches = one foot  
eighty-two inches = one foot  
eighty-three inches = one foot  
eighty-four inches = one foot  
eighty-five inches = one foot  
eighty-six inches = one foot  
eighty-seven inches = one foot  
eighty-eight inches = one foot  
eighty-nine inches = one foot  
ninety inches = one foot  
ninety-one inches = one foot  
ninety-two inches = one foot  
ninety-three inches = one foot  
ninety-four inches = one foot  
ninety-five inches = one foot  
ninety-six inches = one foot  
ninety-seven inches = one foot  
ninety-eight inches = one foot  
ninety-nine inches = one foot  
one hundred inches = one foot



<b>CONSULTANTS:</b>  <b>PADGETT</b> Engineering Group Consulting Structural Engineers 2255 CUMBERLAND PARKWAY - SUITE 1910 - ATLANTA - GEORGIA 30339		 LOUISIANA C.O.A. 4674	<b>ARCHITECT:</b>  <b>TOLAND MIZELL MOLNAR</b> 590 Means Street NW, Suite 200 Atlanta, GA 30318 404.214.9774	<b>Drawing Title:</b> SECTIONS & DETAILS  <b>Approved:</b> Project Director	<b>Project Title:</b> EXPAND RADIOLOGY AND SPS OVERTON BROOKS VAMC  <b>Location:</b> SHREVEPORT, LA  <b>Date:</b> 3-13-2015  <b>Checked:</b> BP  <b>Drawn:</b> AH	<b>Project Number:</b> 667-083  <b>Building Number:</b> 1  <b>Drawing Number:</b> S310  <b>Dwg. of XX</b>	<b>OFFICE OF CONSTRUCTION AND FACILITIES MANAGEMENT</b>   U.S. Department of Veterans Affairs
---	--	---------------------------	---	--	---	--	--