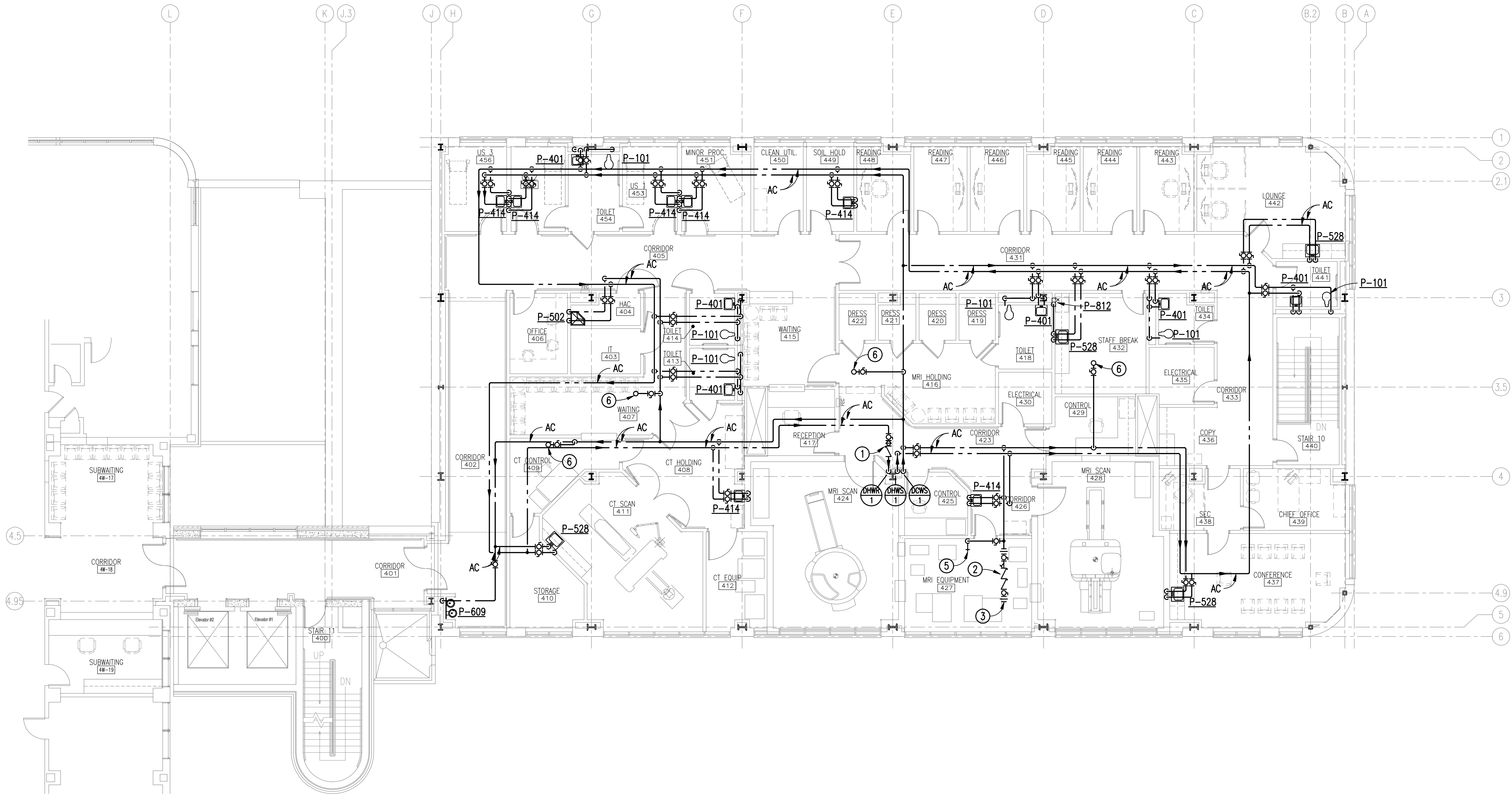


Plotting File: \\S103-Va-Shreveport-3rd and 4th Floors\Drawings\12-5123-PP-103 Fourth Floor-Dom Water Supply Distribution.dwg
Plotted by: Barnhart
Plotted Date: May 11, 2015 3:59pm

three inches = one foot
one and one-half inches = one foot
one inch = one foot
three-quarters inch = one foot
one-half inch = one foot
three-eighths inch = one foot
one-quarter inch = one foot
one-eighth inch = one foot



DOMESTIC WATER DISTRIBUTION
FOURTH FLOOR NEW WORK PLAN
SCALE: 1/8" = 1'-0"


NEW WORK KEYED NOTES: (THIS DRAWING ONLY)

- 1 PROVIDE AND INSTALL NEW BALANCING VALVE (CIRCUIT SETTER) ABOVE FOURTH FLOOR CEILING AT APPROXIMATE LOCATION INDICATED. DOMESTIC HOT WATER CIRCULATION CIRCUITS SHALL BE TESTED, BALANCED, AND CERTIFIED BY A COMPANY WHO SPECIALIZES IN SUCH SERVICES. A TEST AND BALANCE REPORT SHALL BE PROVIDED INDICATING A MINIMUM HOT WATER TEMPERATURE OF 120°F AT THE MOST REMOTE PLUMBING FIXTURE ON EACH CIRCUIT.
- 2 PROVIDE AND INSTALL NEW REDUCE PRINCIPLE BACK FLOW PREVENTER AT APPROXIMATE LOCATION INDICATED.
- 3 REFER TO MRI EQUIPMENT DRAWINGS FOR CONTINUATION OF PIPING TO EQUIPMENT.
- 4 ROUTE NEW 1/2" DOMESTIC WATER THRU WALL TO ICE MAKER SUPPLY BOX.
- 5 PROVIDE AND INSTALL NEW 3/4" CHROME PLATED HOSE BIBB. MOUNT AT 36 INCHES ABOVE FINISHED FLOOR.
- 6 3/4" DCWS-UP TO HVAC EQUIPMENT MAKE-UP WATER SUPPLY.

GENERAL NOTES

- A. THESE DRAWINGS ARE DIAGRAMMATIC ONLY AND ARE NOT TO BE SCALED. FIELD VERIFY ALL DIMENSIONS, PIPE SIZES, AND INVERTS. REFER TO ARCHITECTURAL DRAWINGS FOR DIMENSIONS AND LOCATIONS OF ALL PLUMBING FIXTURES AND EQUIPMENT.
- B. COORDINATE PIPE ROUTING WITH DUCT ROUTING, EQUIPMENT LOCATIONS, ELECTRICAL INSTALLATIONS, AND BUILDING STRUCTURAL MEMBERS. OFFSET PIPING WHERE REQUIRED TO AVOID CONFLICTS. AVOID PENETRATING ANY MAIN STRUCTURAL BEAM. NOTIFY COR AND ARCHITECT OF ANY CONFLICTS.
- C. CONTRACTOR SHALL REMOVE AND REPAIR PORTIONS OF FLOORS, CEILINGS AND/OR SLABS AFFECTED BY PLUMBING MODIFICATIONS. REPAIR SURFACES TO MATCH EXISTING UNLESS NOTED OTHERWISE ON ARCHITECTURAL DRAWINGS.
- D. PRIOR TO PERFORMING ANY PLUMBING WORK OR PURCHASING ANY MATERIALS VERIFY EXACT LOCATION, ROUTING, AND PIPE SIZES, ETC. OF ALL EXISTING DOMESTIC WATER PIPING.
- E. PROVIDE REDUCE PRESSURE BACKFLOW PREVENTERS AT ALL EQUIPMENT REQUIRED BY 2012 IPC AND VA DESIGN MANUAL.
- F. REFER TO ISOMETRIC RISER DIAGRAMS PLUMBING DRAWING PP301 FOR PIPE SIZES.
- G. SEE ARCHITECTURAL PLANS FOR WALL RATINGS.

FINAL SUBMITTAL

		CONSULTANTS: <div>CLARK♦NEXSEN</div> <div>440 MARTIN LUTHER KING, JR. BLVD. MACON, GA 31201 478-743-8415 FAX 478-743-8239 WWW.CLARKNEXSEN.COM</div>	<div></div> <div>ARCHITECT:</div> <div><div>TOLAND MIZELL MOLNAR</div><div>590 Means Street NW, Suite 200 Atlanta, GA 30318 404.214.9774</div></div>	Drawing Title: DOMESTIC WATER DISTRIBUTION FOURTH FLOOR NEW WORK PLAN		Project Title: EXPAND RADIOLOGY AND SPS OVERTON BROOKS VAMC		Project Number: 667-083		OFFICE OF CONSTRUCTION AND FACILITIES MANAGEMENT	
				Approved: Project Director		Location: SHREVEPORT, LA		Building Number: 1			
						Date: 04-17-2015		Checked: CARLTON			
								Drawn: BARNHART		Dwg. 87 of 160	
Revisions:	Date									VA  U.S. Department of Veterans Affairs	