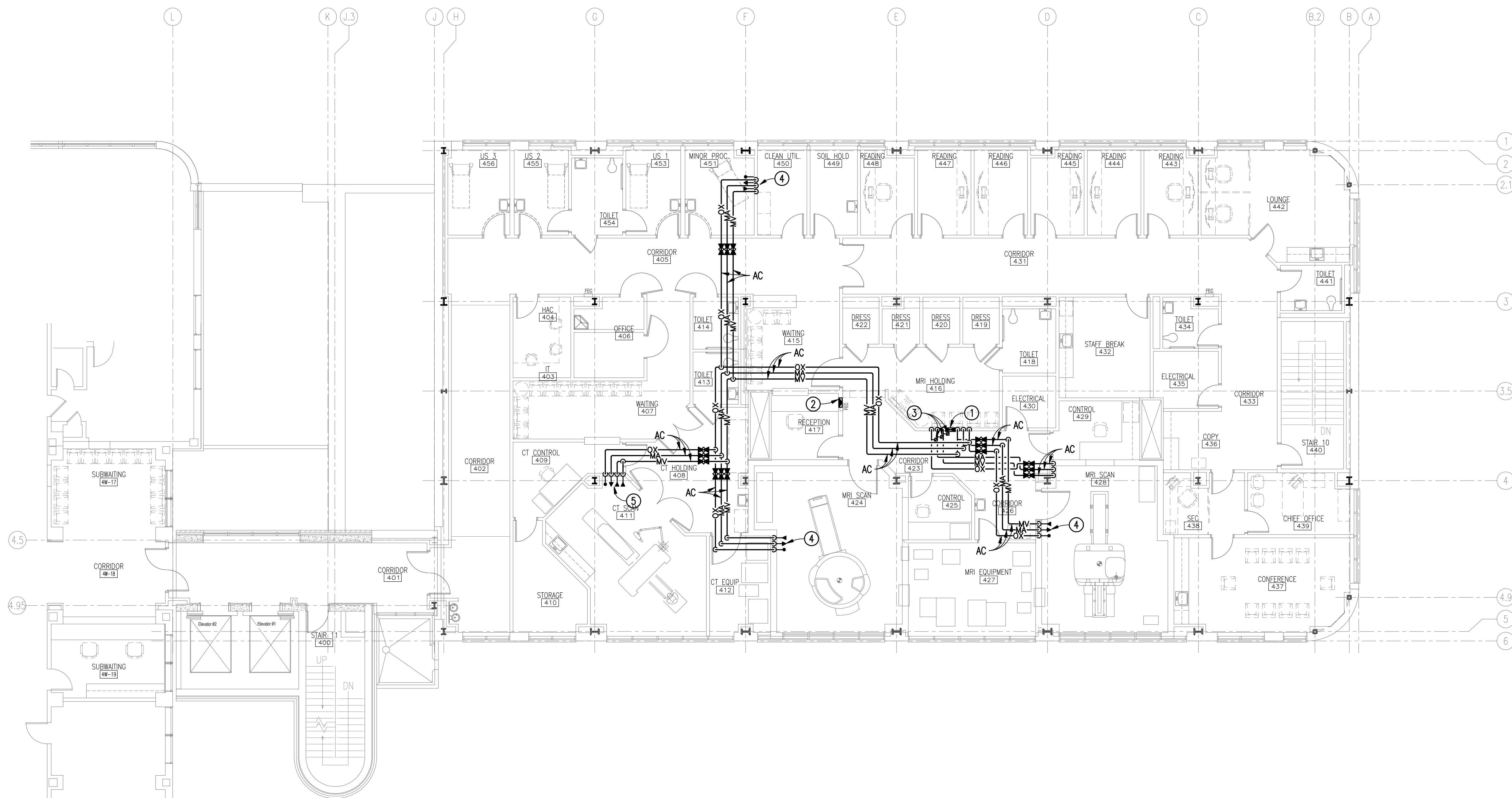
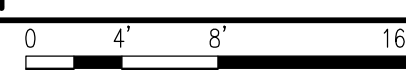
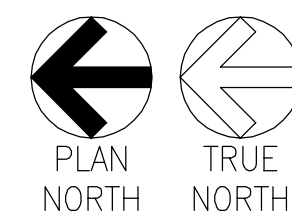


- A. THESE DRAWINGS ARE DIAGRAMMATIC ONLY AND ARE NOT TO BE SCALED. FIELD VERIFY ALL DIMENSIONS, PIPE SIZES, AND INVERTS. REFER TO ARCHITECTURAL DRAWINGS FOR DIMENSIONS AND LOCATIONS OF ALL PLUMBING FIXTURES AND EQUIPMENT.
- B. COORDINATE PIPE ROUTING WITH DUCT ROUTING, EQUIPMENT LOCATIONS, ELECTRICAL INSTALLATIONS, AND BUILDING STRUCTURAL MEMBERS. OFFSET PIPING WHERE REQUIRED TO AVOID CONFLICTS. AVOID PENETRATING ANY MAIN STRUCTURAL BEAM. NOTIFY COR AND ARCHITECT OF ANY CONFLICTS.
- C. CONTRACTOR SHALL REMOVE AND REPAIR PORTIONS OF FLOORS, CEILING AND/OR SLABS AFFECTED BY PLUMBING MODIFICATIONS. REPAIR SURFACES TO MATCH EXISTING UNLESS NOTED OTHERWISE ON ARCHITECTURAL DRAWINGS.
- D. PRIOR TO PERFORMING ANY PLUMBING WORK OR PURCHASING ANY MATERIALS VERIFY EXACT LOCATION, ROUTING, AND PIPE SIZES, ETC. OF ALL EXISTING MEDICAL GAS PIPING.
- E. CONNECT PRESSURE SWITCHES TO AREA ALARM PANEL. CONNECT AREA ALARM ALARM TO MASTER ALARM PANEL. PROVIDE ALL NECESSARY CONDUIT, CONNECTORS, AND CONDUCTORS FOR COMPLETE AND OPERABLE. LEVEL 1 ALARM SYSTEM PER NFPA 99. ALL ALARM COMMUNICATION WIRING SHALL BE ROUTED IN CONDUIT. PLUMBING CONTRACTOR SHALL WORK WITH ELECTRICAL CONTRACTOR TO INSURE ALL CONDUIT HAS BEEN RUN.
- F. ALL IN LINE MEDICAL GAS SHUT OFF VALVES SHALL BE OF LOCKING TYPE AND LOCKED OPEN UNLESS OTHERWISE NOTED.
- G. REFER TO ISOMETRIC RISER DIAGRAMS PLUMBING DRAWING PP302 FOR PIPE SIZES.
- H. SEE ARCHITECTURAL PLANS FOR WALL RATINGS.

OFFICE OF  
CONSTRUCTION  
AND FACILITIES  
MANAGEMENT



**MEDICAL GAS DISTRIBUTION  
FOURTH FLOOR NEW WORK PLAN**  
SCALE: 1/8" = 1'-0"

[illegible]