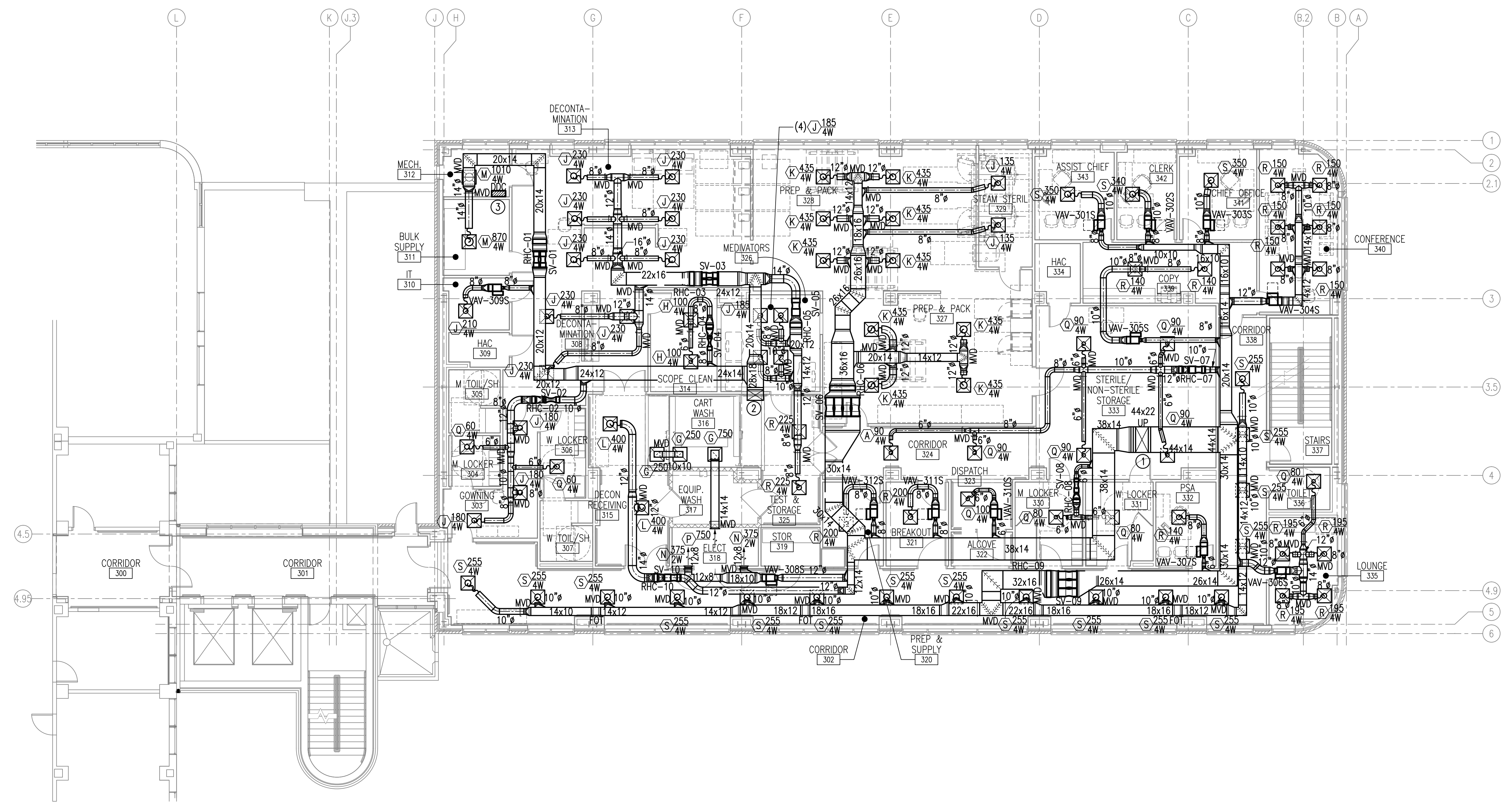






three inches = one foot
one and one half inches = one foot
one inch = one foot
three quarters inch = one foot
one half inch = one foot
three eighths inch = one foot
one quarter inch = one foot
one eighth inch = one foot

GENERAL NOTES:
A. READ SPECIFICATIONS FOR BALANCING DAMPER REQUIREMENTS.

- NOTES:**
(THIS SHEET ONLY)
- ① 44x22 SUPPLY DUCT UP THROUGH NEW CHASE TO AH-1-4SRF-1 ON ROOF. SEE SHEET M110 FOR CONTINUATION.
 - ② 28x18 SUPPLY DUCT UP THROUGH NEW CHASE TO AH-1-4SRF-1 ON ROOF. SEE SHEET M110 FOR CONTINUATION.
 - ③ PROVIDE DDC CONTROL PANEL FOR 3rd FLOOR AT THIS LOCATION.



 **THIRD FLOOR SUPPLY DUCTWORK
NEW WORK PLAN - MECHANICAL**
SCALE: 1/8" = 1'-0"

Revisions: <table border="1"><tr><td> </td><td> </td></tr><tr><td> </td><td> </td></tr><tr><td> </td><td> </td></tr><tr><td> </td><td> </td></tr></table> Date:										CONSULTANTS:  APPLIED ENGINEERING SOLUTIONS 440 Martin Luther King, Jr. Blvd., Suite 401 Macon, Georgia 31201 Phone: (478) 314-1270 - Fax: (478) 314-1271 www.aes-pe.com				ARCHITECT/ENGINEERS:  TOLAND MIZELL MOLNAR 590 Means Street NW, Suite 200 Atlanta, GA 30318 404.214.9774		Drawing Title: THIRD FLOOR SUPPLY DUCTWORK NEW WORK PLAN - MECHANICAL Approved: Project Director		Project Title: EXPAND RADIOLOGY AND SPS OVERTON BROOKS VAMC Location: SHREVEPORT, LA Date: 04-17-2015 Checked: PJC Drawn: JSW		Project Number: 667-083 Building Number: 1 Drawing Number: M104 Dwg. 109 of 160		FINAL SUBMITTAL OFFICE OF CONSTRUCTION AND FACILITIES MANAGEMENT VA 