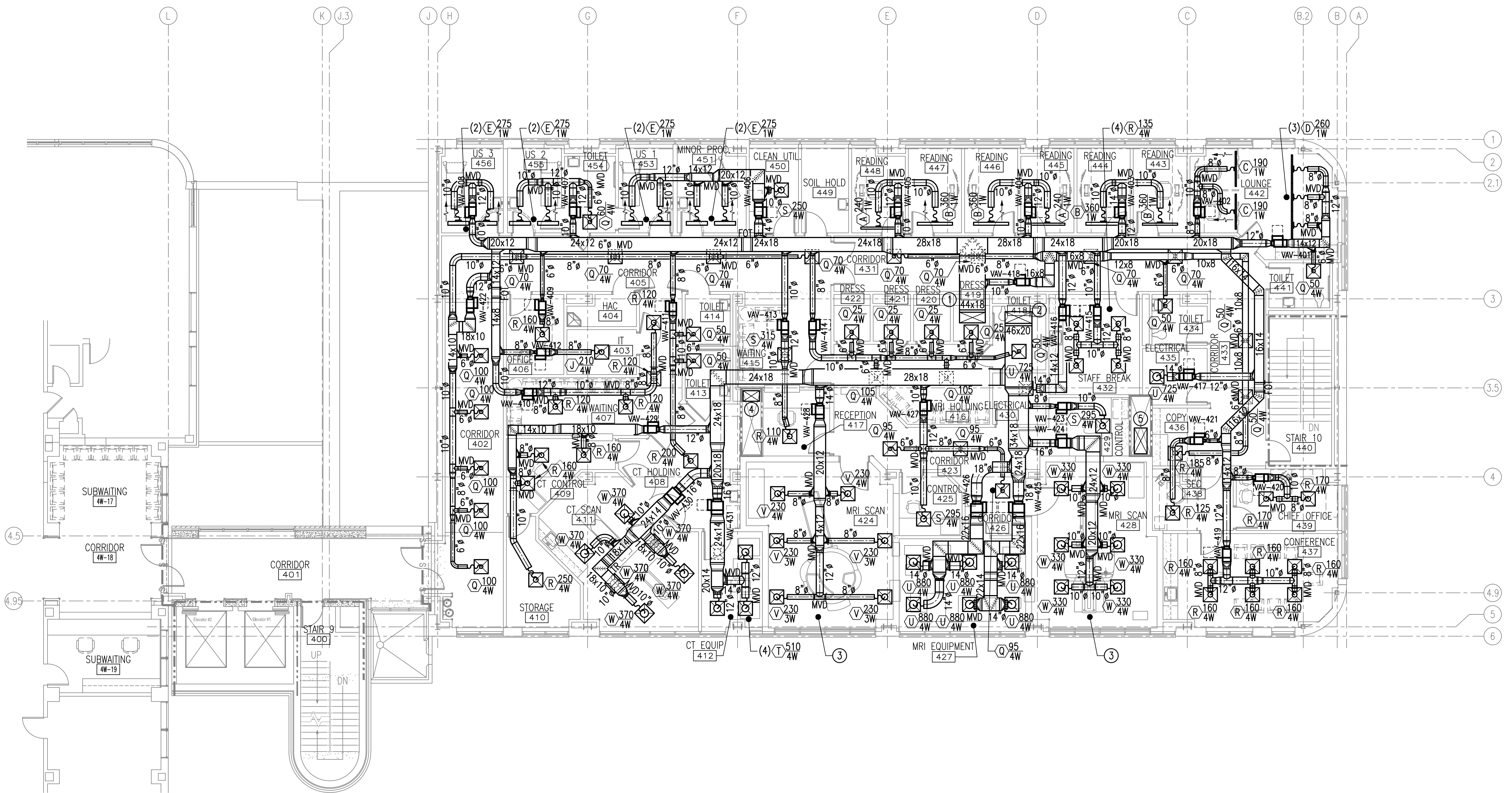


three inches = one foot
one and one half inches = one foot
one inch = one foot
three quarters inch = one foot
one half inch = one foot
three eighths inch = one foot
one quarter inch = one foot
one eighth inch = one foot
one eighth inch = one foot

GENERAL NOTES:
A. READ SPECIFICATIONS FOR BALANCING DAMPER REQUIREMENTS.

- NOTES:
(THIS SHEET ONLY)
- 1 44x18 SUPPLY DUCT UP TO AH-1-4SRF-2 ON ROOF.
 - 2 46x20 SUPPLY DUCT UP TO AH-1-4SRF-3 ON ROOF.
 - 3 ANY AND ALL HVAC SYSTEM COMPONENTS IN THIS ROOM SHALL BE NON-MANETIC. NO EXCEPTIONS.
 - 4 28x18 SUPPLY DUCT UP/DOWN FROM 3rd FLOOR TO AH-1-4SRF-1 ON ROOF.
 - 5 44x22 SUPPLY DUCT UP/DOWN FROM 3RD FLOOR TO AH-1-4SRF-1 ON ROOF.



FOURTH FLOOR SUPPLY DUCTWORK
NEW WORK FOURTH FLOOR PLAN - MECHANICAL
SCALE: 1/8" = 1'-0"

CONSULTANTS: APPLIED ENGINEERING SOLUTIONS 440 Martin Luther King, Jr. Blvd., Suite 401 Macon, Georgia 31201 Phone: (478) 314-1270 - Fax: (478) 314-1271 www.aes-pe.com		 ARCHITECT/ENGINEERS: TOLAND MIZELL MOLNAR 590 Means Street NW, Suite 200 Atlanta, GA 30318 404.214.9774		Drawing Title: FOURTH FLOOR SUPPLY DUCTWORK NEW WORK FOURTH FLOOR PLAN - MECHANICAL Approved: Project Director		Project Title: EXPAND RADIOLOGY AND SPS OVERTON BROOKS VAMC Location: SHREVEPORT, LA Date: 04-17-2015 Checked: PJC Drawn: JSW		Project Number: 667-083 Building Number: 1 Drawing Number: M107 Dwg. 112 of 160		FINAL SUBMITTAL OFFICE OF CONSTRUCTION AND FACILITIES MANAGEMENT VA	
---	--	--	--	---	--	--	--	--	--	---	--