

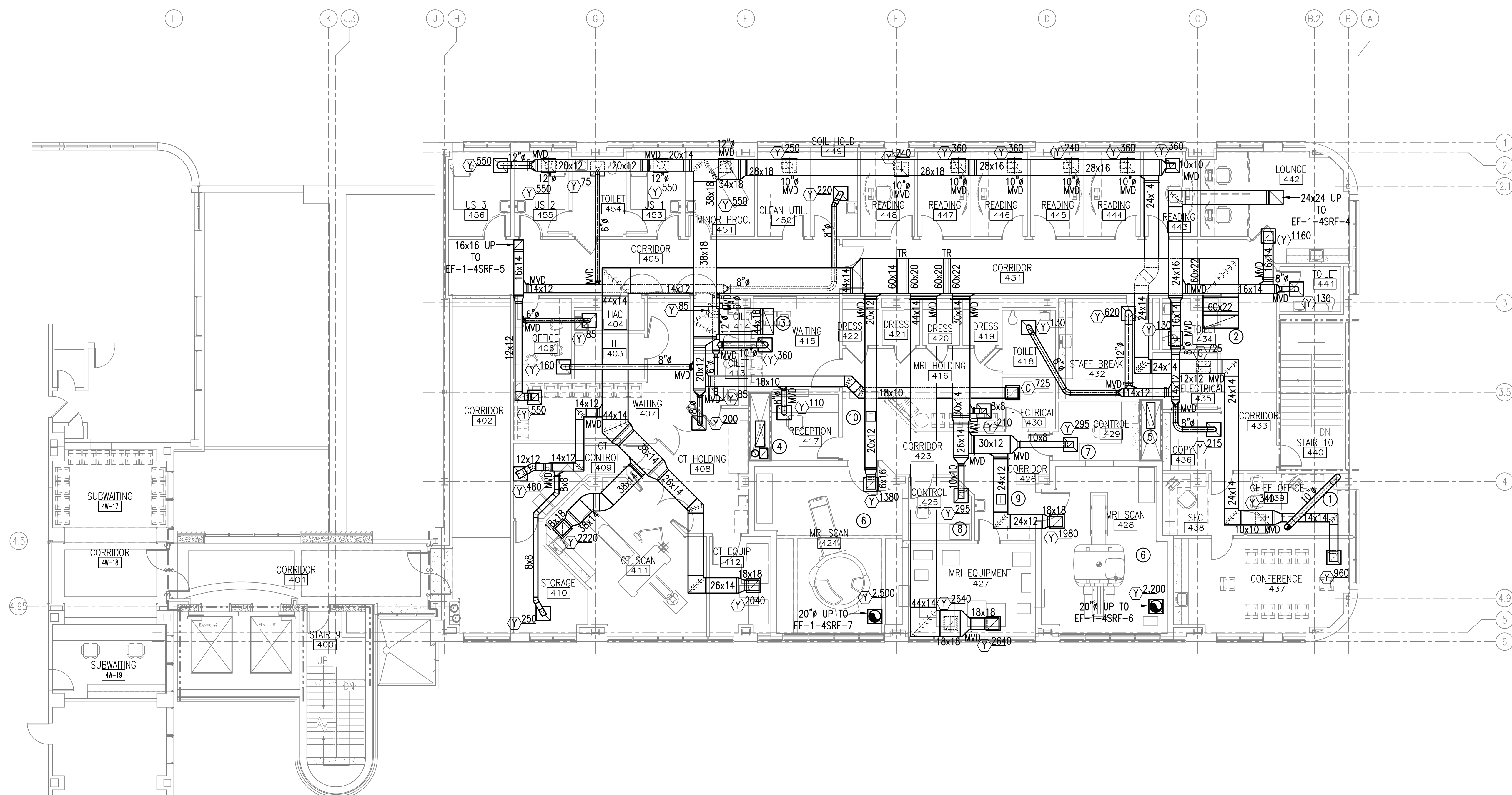
GENERAL NOTES:

A. READ SPECIFICATIONS FOR BALANCING DAMPER REQUIREMENTS.

NOTES:

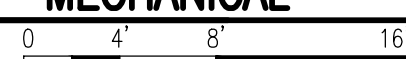
(THIS SHEET ONLY)

- ① 10" EXHAUST DUCT FROM BELOW. ROUTE DUCT OVER AND UP TO FAN EF-1-4SRF-1 ON ROOF.
- ② 60x22 RETURN DUCT UP TO AH-1-4SRF-3 ON ROOF.
- ③ 44x18 RETURN DUCT UP TO AH-1-4SRF-2 ON ROOF.
- ④ 12" EXHAUST DUCT, 44X18 RETURN DUCT, AND 18X14 EXHAUST DUCT IN NEW CHASE TO ROOF. SEE SHEET M110 FOR CONTINUATION.
- ⑤ 46x20 RETURN DUCT UP IN NEW CHASE TO ROOF. SEE SHEET M110 FOR CONTINUATION.
- ⑥ ANY AND ALL HVAC SYSTEM COMPONENTS IN THIS ROOM SHALL BE NON-MAGNETIC. NO EXCEPTIONS.
- ⑦ SETPOINT ADJUSTMENT KNOB FOR VAV TERMINAL VAV-424 IN THIS CONTROL ROOM.
- ⑧ SETPOINT ADJUSTMENT KNOB FOR VAV TERMINAL VAV-428 IN THIS CONTROL ROOM.
- ⑨ TEMPERATURE SENSOR FOR VAV-424 IN RETURN DUCT AT THIS APPROXIMATE LOCATION.
- ⑩ TEMPERATURE SENSOR FOR VAV-428 IN RETURN DUCT AT THIS APPROXIMATE LOCATION.



FOURTH FLOOR RETURN AND EXHAUST DUCT
NEW WORK FOURTH FLOOR PLAN – MECHANICAL

SCALE: $1/8" = 1'-0"$

[illegible]

CONSULTANTS:



**APPLIED ENGINEERING
SOLUTIONS**
440 Martin Luther King, Jr. Blvd., Suite 401
Macon, Georgia 31201
Phone: (478) 314-1270 - Fax: (478) 314-1271
www.aes-pe.com



ARCHITECT/ENGINEERS:



590 Means Street NW, Suite 200
Atlanta, GA 30318
404.214.9774

Drawing Title:
FOURTH FLOOR RETURN AND EXHAUST DUCT
NEW WORK FOURTH FLOOR PLAN -
MECHANICAL

Approved: Project Director

Project Title:

EXPAND RADIOLOGY AND SPS
OVERTON BROOKS VAMC

Location: SHREVEPORT, LA

Date:

| |
|----------|
| Checked: |
|----------|

Drawn:

| | |
|------------------|---------|
| Project Number: | 667-083 |
| Building Number: | |

Drawing Number:
M108

FINAL SUBMITTAL

OFFICE OF
CONSTRUCTION
AND FACILITIES
MANAGEMENT

