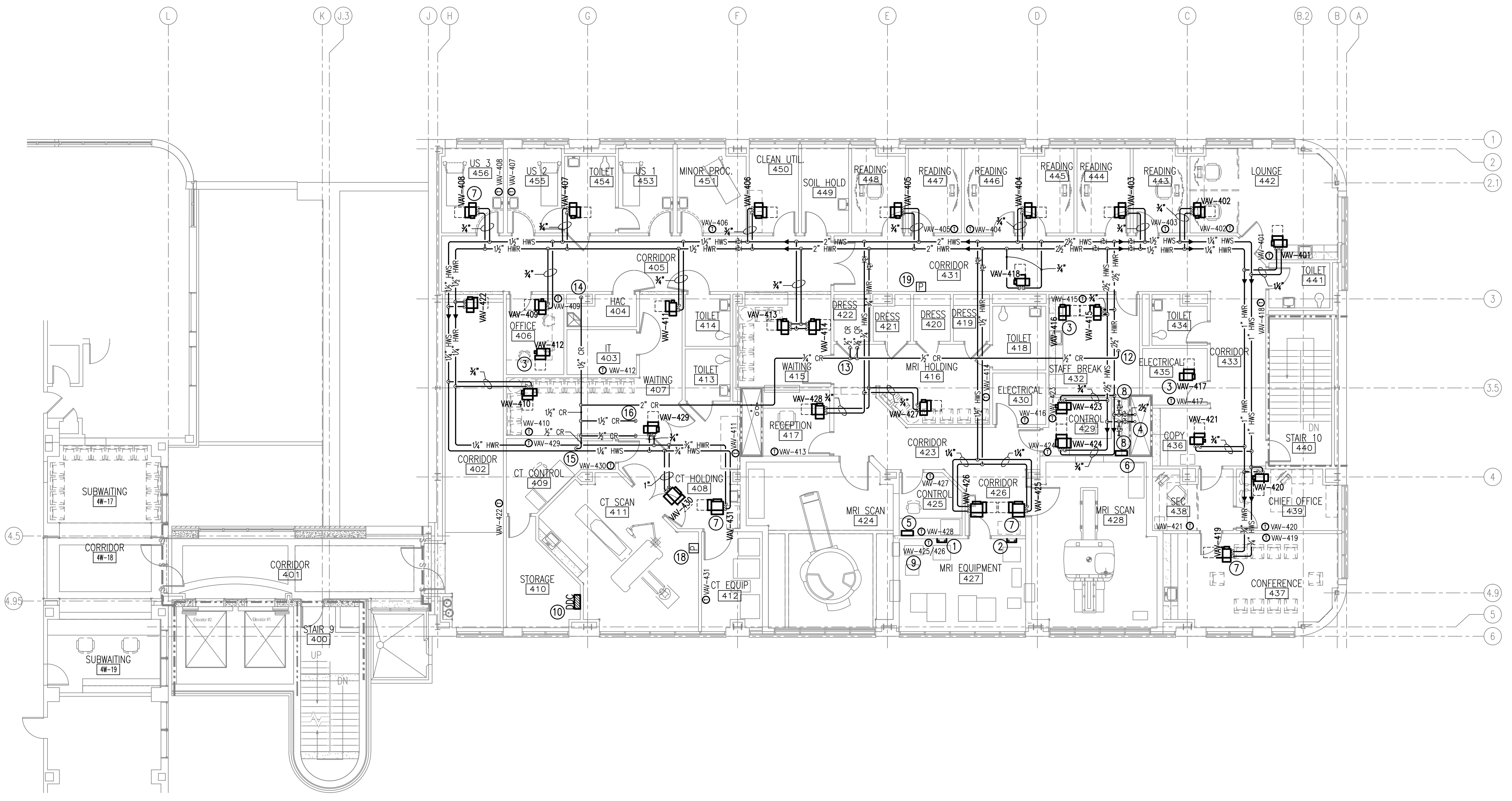


three inches = one foot
one and one half inches = one foot
one inch = one foot
three quarters inch = one foot
one half inch = one foot
three eighths inch = one foot
one quarter inch = one foot
one eighth inch = one foot



FOURTH FLOOR PIPING
NEW WORK FOURTH FLOOR PLAN - MECHANICAL
SCALE: 1/8" = 1'-0"

- NOTES:**
(THIS SHEET ONLY)
- 1 START-UP AND INSTRUMENT MANIFOLD FOR OASIS MARK III MRI CHILLER SYSTEM. SEE DETAIL ON SHEET M505.
 - 2 START-UP AND INSTRUMENT MANIFOLD FOR ECHELON OVAL MRI CHILLER SYSTEM. SEE DETAIL ON SHEET M505.
 - 3 VARIABLE VOLUME BOXES DO NOT HAVE HOT WATER.
 - 4 2½" HWS/HWR. 4" UP TO ROOF AND 2½" HWS/HWR DOWN TO 3rd FLOOR.
 - 5 DDC SYSTEM FAN START SWITCH FOR FAN EF-1-4SRF-7. SEE CONTROLS AND COORDINATE LOCATION WITH MRI VENDOR.
 - 6 DDC SYSTEM FAN START SWITCH FOR FAN EF-1-4SRF-6. SEE CONTROLS AND COORDINATE LOCATION WITH MRI VENDOR.
 - 7 PROVIDE INDICATED TERMINALS OR REHEAT COIL WITH 3-WAY HEATING CONTROL VALVE AS DETAILED. ALL OTHER UNITS NOT IDENTIFIED WITH THIS NOTE SHALL BE CONTROLLED BY 2-WAY PRESSURE INDEPENDENT CONTROL VALVE AS SPECIFIED.
 - 8 PROVIDE ¾" BALL VALVES FOR ISOLATION AND DRAIN VALVES WITH HOSE THREADED CONNECTIONS WITH SCREW-ON GASKETED CAP ON HWS/HWR.
 - 9 PROVIDE ON SPACE TEMPERATURE SENSOR FROM TERMINALS VAV-425 AND VAV-426 IN THIS ROOM.
 - 10 DDC CONTROL PANEL FOR THIS FLOOR AT THIS LOCATION.
 - 11 CONNECT DRAINS FROM ALL ROOF TOP EQUIPMENT TO SANITARY.
 - 12 ½" STEAM CONDENSATE PIPE FROM HUMIDIFIER STEAM TRAP IN AH-1-4SRF-3 ABOVE.
 - 13 TWO ½" STEAM CONDENSATE PIPES FROM AH-1-4SRF-2 HEATING COIL AND HUMIDIFIER STEAM TRAPS.
 - 14 1½" STEAM CONDENSATE RETURN PIPE FROM HEAT EXCHANGERS 3 AND 4 IN AH-1-4SRF-3 ABOVE.
 - 15 ½" STEAM CONDENSATE PIPE FROM PRV VALVE STEAM TRAPS.
 - 16 1½" STEAM CONDENSATE PIPE FROM AH-1-4SRF-1 HEATING COIL AND ½" STEAM CONDENSATE PIPE FROM AH-1-4SRF-1 HUMIDIFIER.
 - 17 2" STEAM CONDENSATE PIPE DOWN IN PIPE CHASE.
 - 18 AH-1-4SRF-3 ECONOMIZER SPACE PRESSURE SENSOR.
 - 19 AH-1-4SRF-2 ECONOMIZER SPACE PRESSURE SENSOR.

Revisions:		CONSULTANTS: APPLIED ENGINEERING SOLUTIONS 440 Martin Luther King, Jr. Blvd., Suite 401 Macon, Georgia 31201 Phone: (478) 314-1270 - Fax: (478) 314-1271 www.aes-pe.com		 ARCHITECT/ENGINEERS: TOLAND MIZELL MOLNAR 590 Means Street NW, Suite 200 Atlanta, GA 30318 404.214.9774		Drawing Title: FOURTH FLOOR PIPING NEW WORK FOURTH FLOOR PLAN - MECHANICAL Approved: Project Director		Project Title: EXPAND RADIOLOGY AND SPS OVERTON BROOKS VAMC Location: SHREVEPORT, LA Date: 04-17-2015 Checked: PJC Drawn: JSW		Project Number: 667-083 Building Number: 1 Drawing Number: M109 Dwg. 114 of 160		FINAL SUBMITTAL OFFICE OF CONSTRUCTION AND FACILITIES MANAGEMENT VA	
-------------------	--	--	--	---	--	---	--	---	--	---	--	---	--