

three inches = one foot

one and one half inches = one foot

one inch = one foot

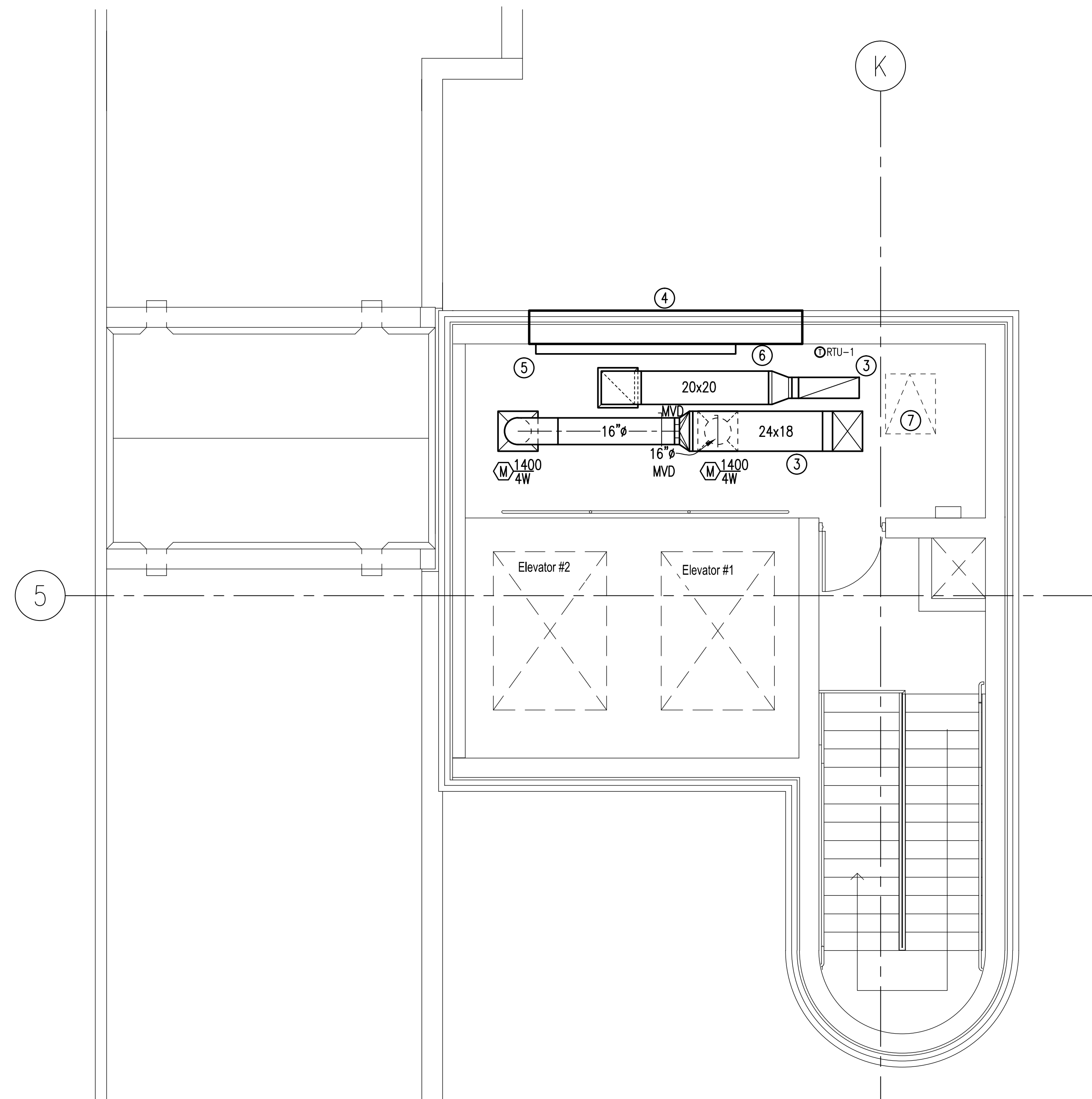
three quarters inch = one foot

one half inch = one foot

three eighths inch = one foot

one quarter inch = one foot

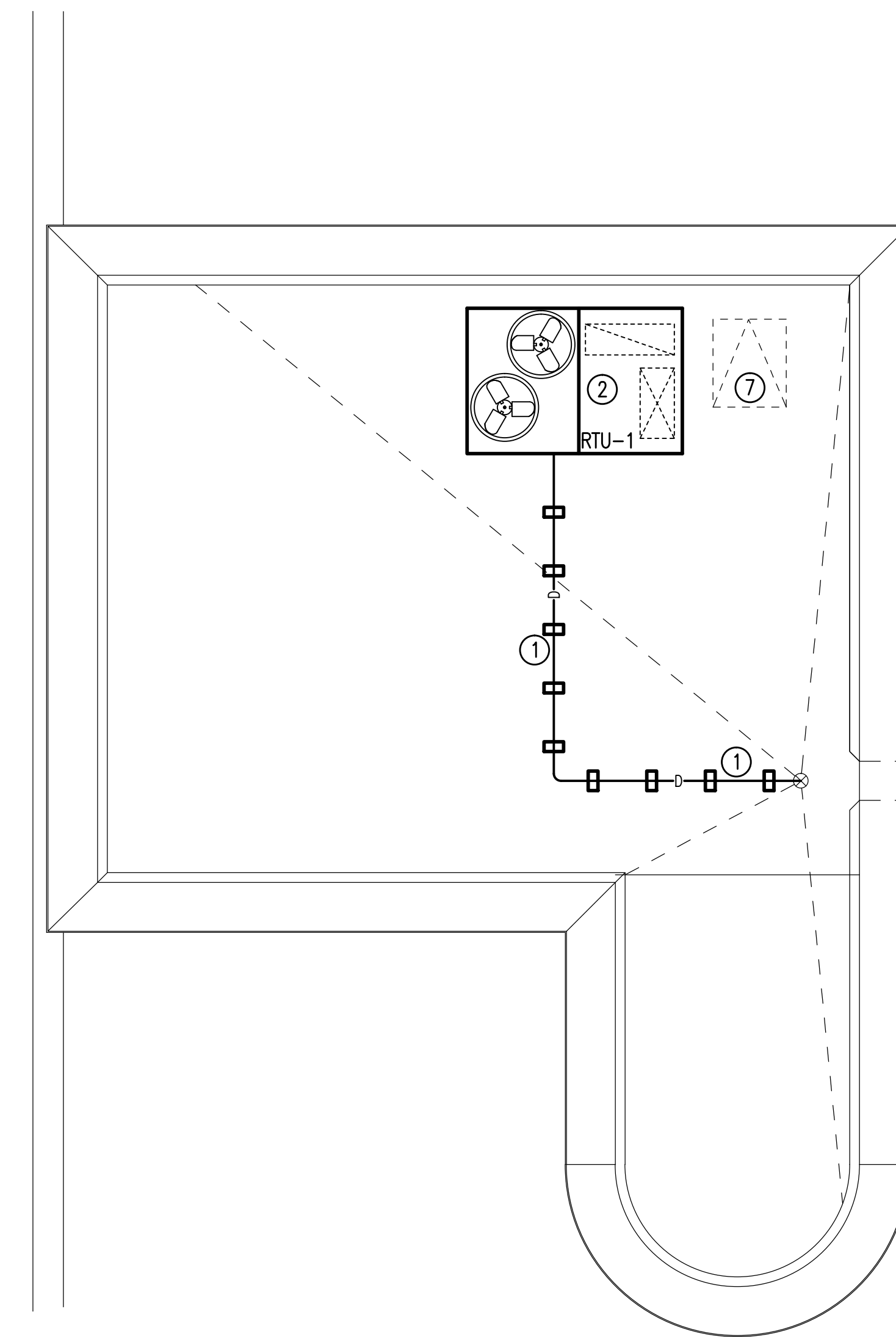
one eighth inch = one foot



ENLARGED FLOOR PLAN
ELEVATOR MACHINE ROOM - MECHANICAL

SCALE: $1/4" = 1'-0"$

0 2' 4'

A horizontal scale bar with three segments. The first segment is labeled '0', the second '2'', and the third '4''. The segments are black with white outlines.

ENLARGED FLOOR PLAN
ROOF FLOOR STAIRS - MECHANICAL
SCALE: 1/4" = 1'-0"

NOTES:

(THIS SHEET ONLY)

- ① COPPER DRAIN LINE SUPPORTS OFF ROOF WITH PT SLEEPER PADS. RUN TO ROOF DRAIN. SEE SHEET M504 FOR SLEEPER DETAIL.
- ② REINSTALL EXISTING RTU-1.
- ③ EXPOSED DUCT. INSULATE SUPPLY DUCT PER SPECIFICATIONS. RETURN DUCT UN-INSULATED.
- ④ REINSTALL EXISTING SMOKE VENT LOUVER. SEE ARCHITECTURAL.
- ⑤ REINSTALL EXISTING LOW LEAKAGE 120" WIDE X 16" HIGH MOTORIZED DAMPER WITH NORMALLY OPEN ACTUATOR. SEE ELECTRICAL FOR CONNECTION TO FIRE ALARM SYSTEM.
- ⑥ SHEET METAL BLANK OFF REMAINDER OF LOUVER.
- ⑦ ACCESS HATCH. SEE ARCHITECTURAL SHEETS.

FINAL SUBMITTAL

[illegible]