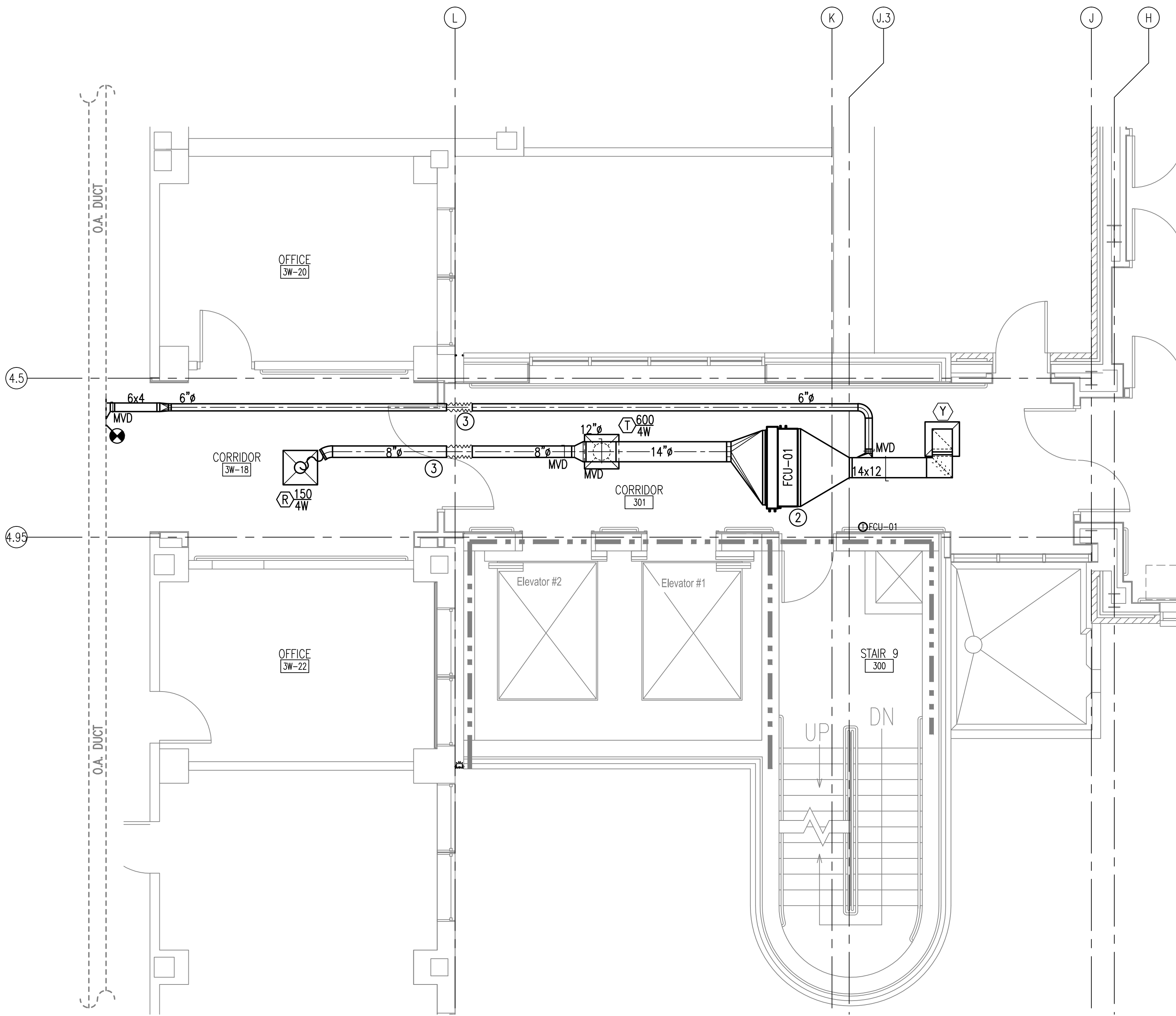
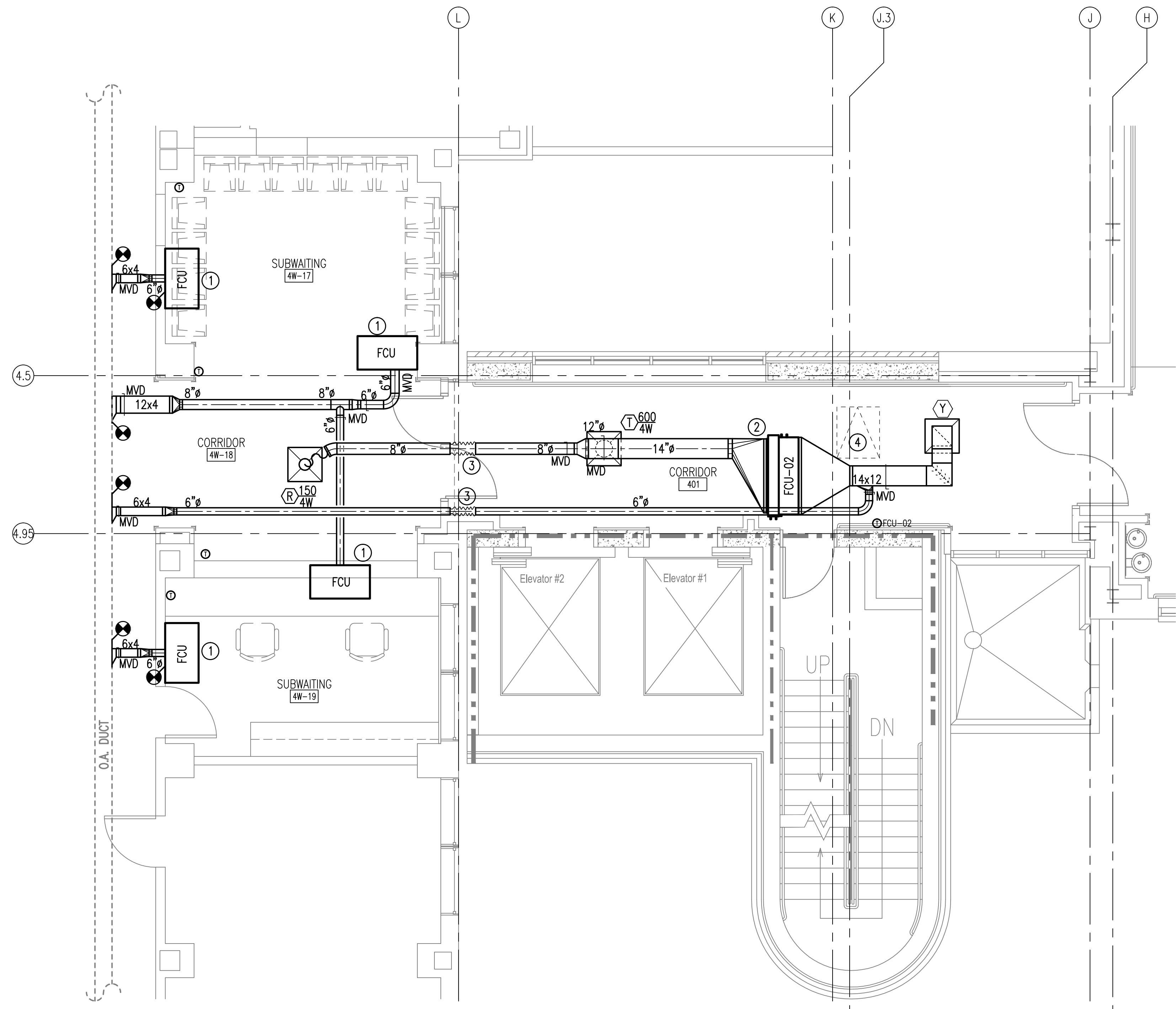


three inches = one foot  
one and one half inches = one foot  
one inch = one foot  
three quarters inch = one foot  
one half inch = one foot  
three eighths inch = one foot  
one quarter inch = one foot  
one eighth inch = one foot



ENLARGED FLOOR PLAN  
3RD FLOOR STAIRS - MECHANICAL  
SCALE: 1/4" = 1'-0"



ENLARGED FLOOR PLAN  
4TH FLOOR STAIRS - MECHANICAL  
SCALE: 1/4" = 1'-0"

- NOTES:**  
(THIS SHEET ONLY)
- ① REINSTALL EXISTING FAN COIL AND WALL MOUNTED THERMOSTAT AS SHOWN IN THIS PLAN.
  - ② INSTALL NEW FAN COIL UNITS PER MANUFACTURES INSTRUCTIONS. SEE MECHANICAL DETAILS. COORDINATE LOCATION WITH ACCESS HATCH TO ELEVATOR ROOM ABOVE.
  - ③ DUCT EXPANSION JOINT. SEE DETAIL HORIZONTAL DUCT ISOLATION ON SHEET M504.
  - ④ ACCESS HATCH. SEE ARCHITECTURAL.

Revisions:		CONSULTANTS:			ARCHITECT/ENGINEERS:		Drawing Title:		Project Title:		Project Number:		OFFICE OF CONSTRUCTION AND FACILITIES MANAGEMENT VA   U.S. Department of Veterans Affairs	
		 APPLIED ENGINEERING SOLUTIONS 440 Martin Luther King, Jr. Blvd., Suite 401 Macon, Georgia 31201 Phone: (478) 314-1270 - Fax: (478) 314-1271 www.aes-pe.com			TOLAND MIZELL MOLNAR 590 Means Street NW, Suite 200 Atlanta, GA 30318 404.214.9774		ENLARGED STAIR DUCTWORK NEW WORK FLOOR PLANS - MECHANICAL		EXPAND RADIOLOGY AND SPS OVERTON BROOKS VAMC		667-083			
Date:						Approved: Project Director		Location: SHREVEPORT, LA		Drawing Number: M405		Building Number: 1		
								Date: 04-17-2015		Checked: PJC		Dwg. 122 of 160		