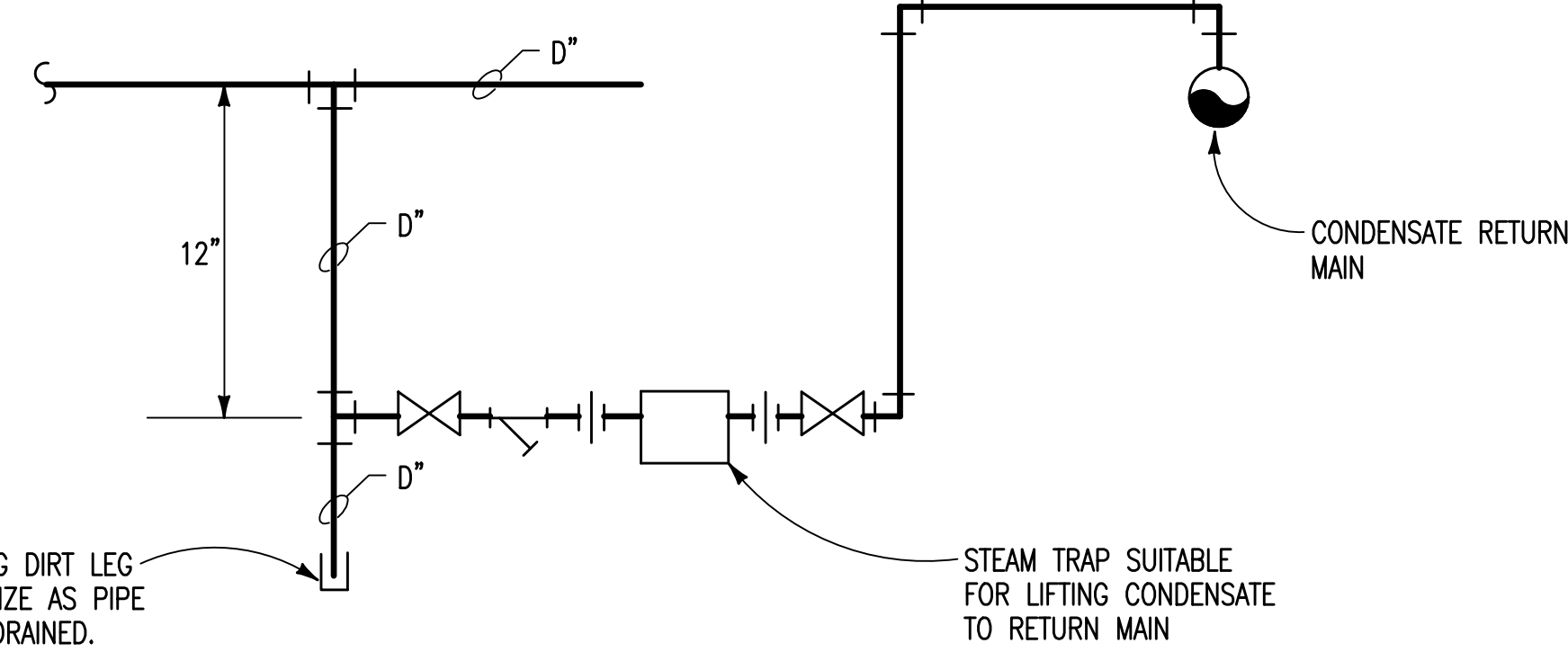
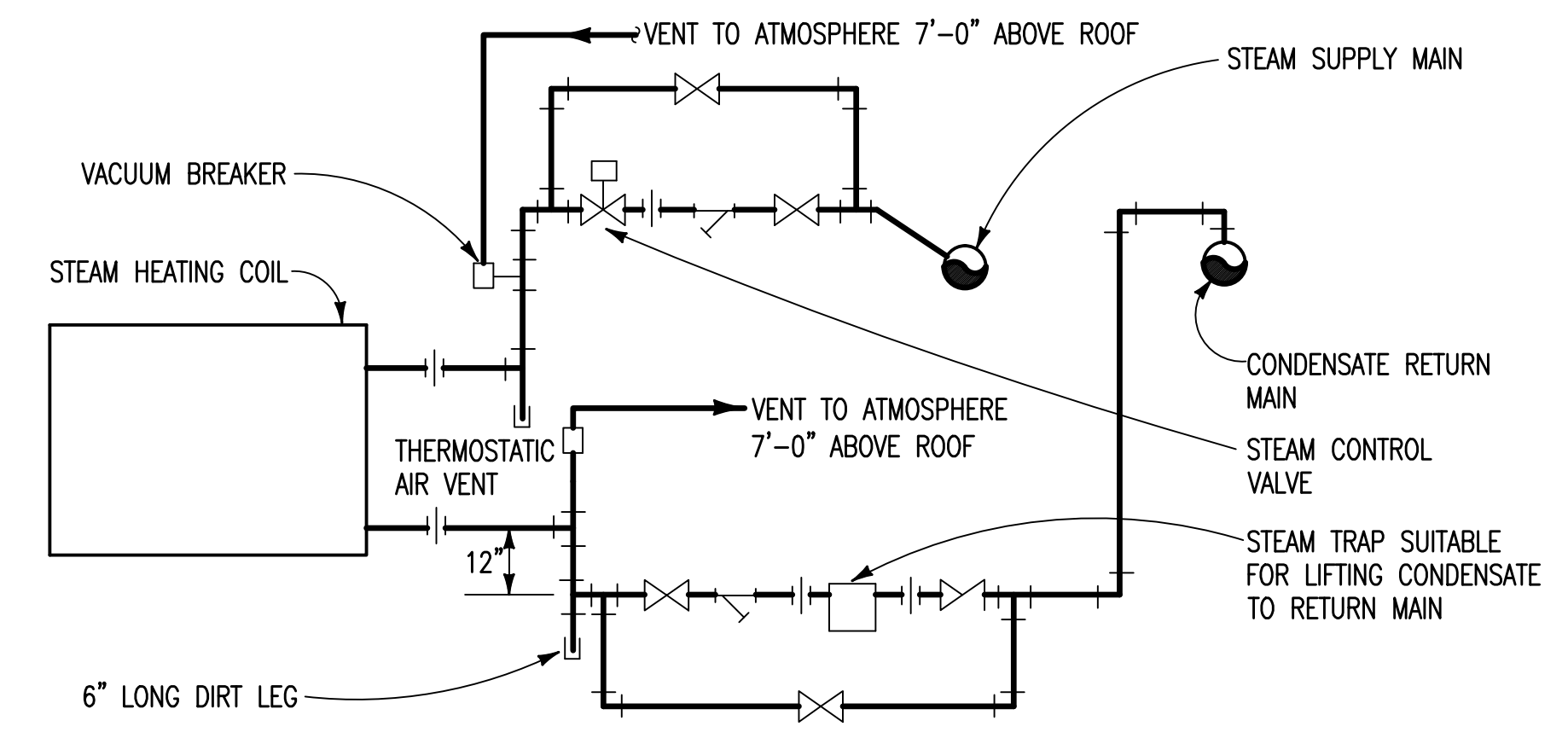


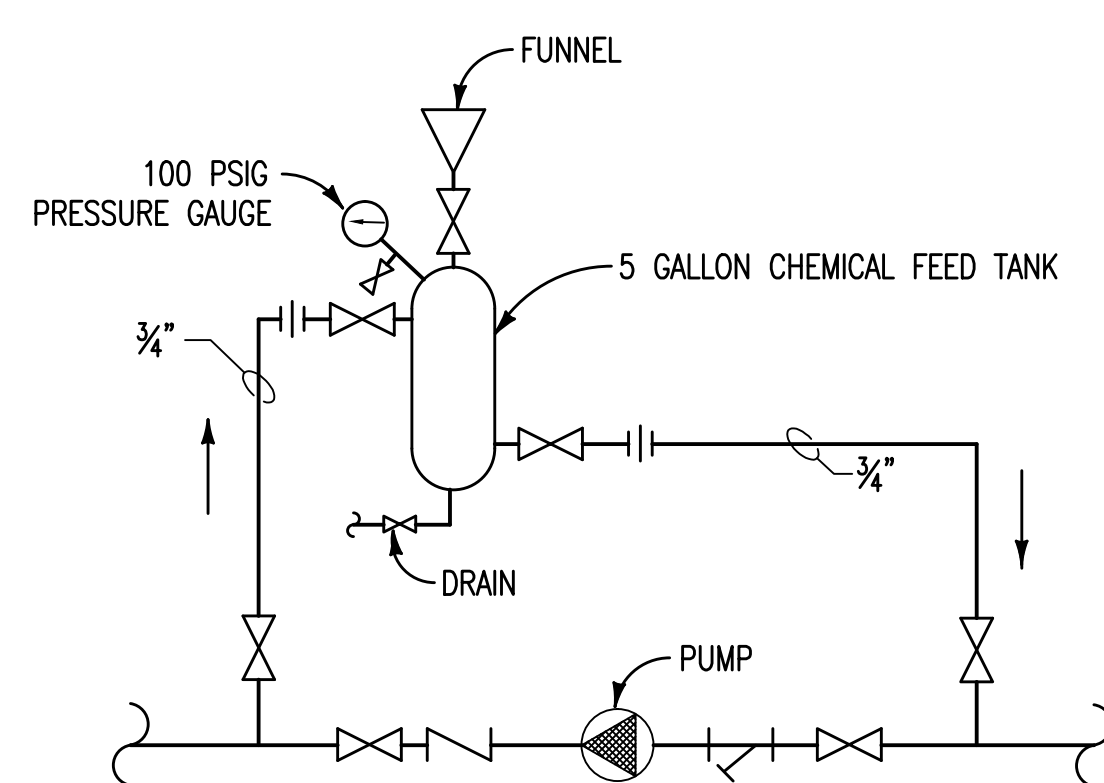
CONDENSATE DRAIN PIPING
SCALE: NONE



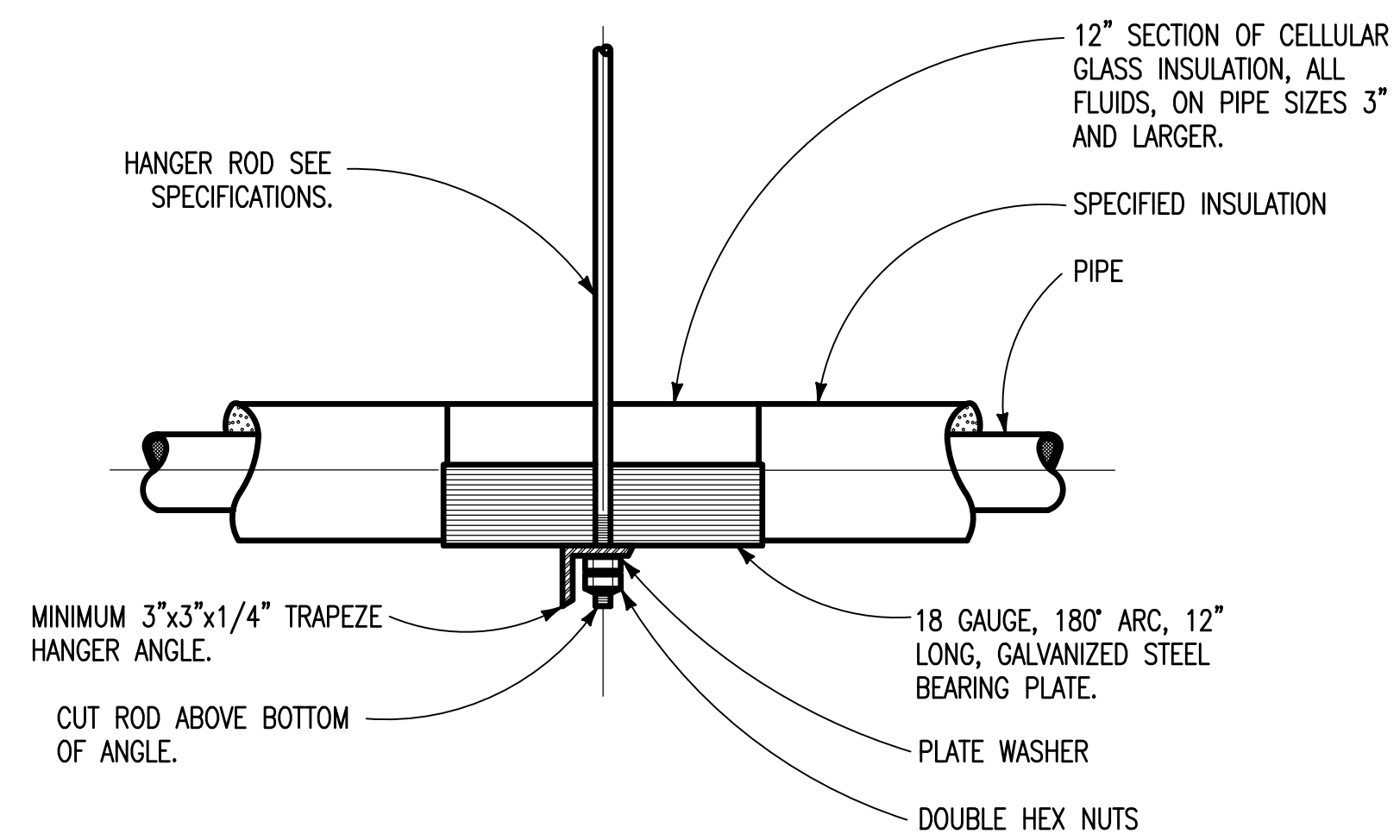
DRIP STATION
SCALE: NONE



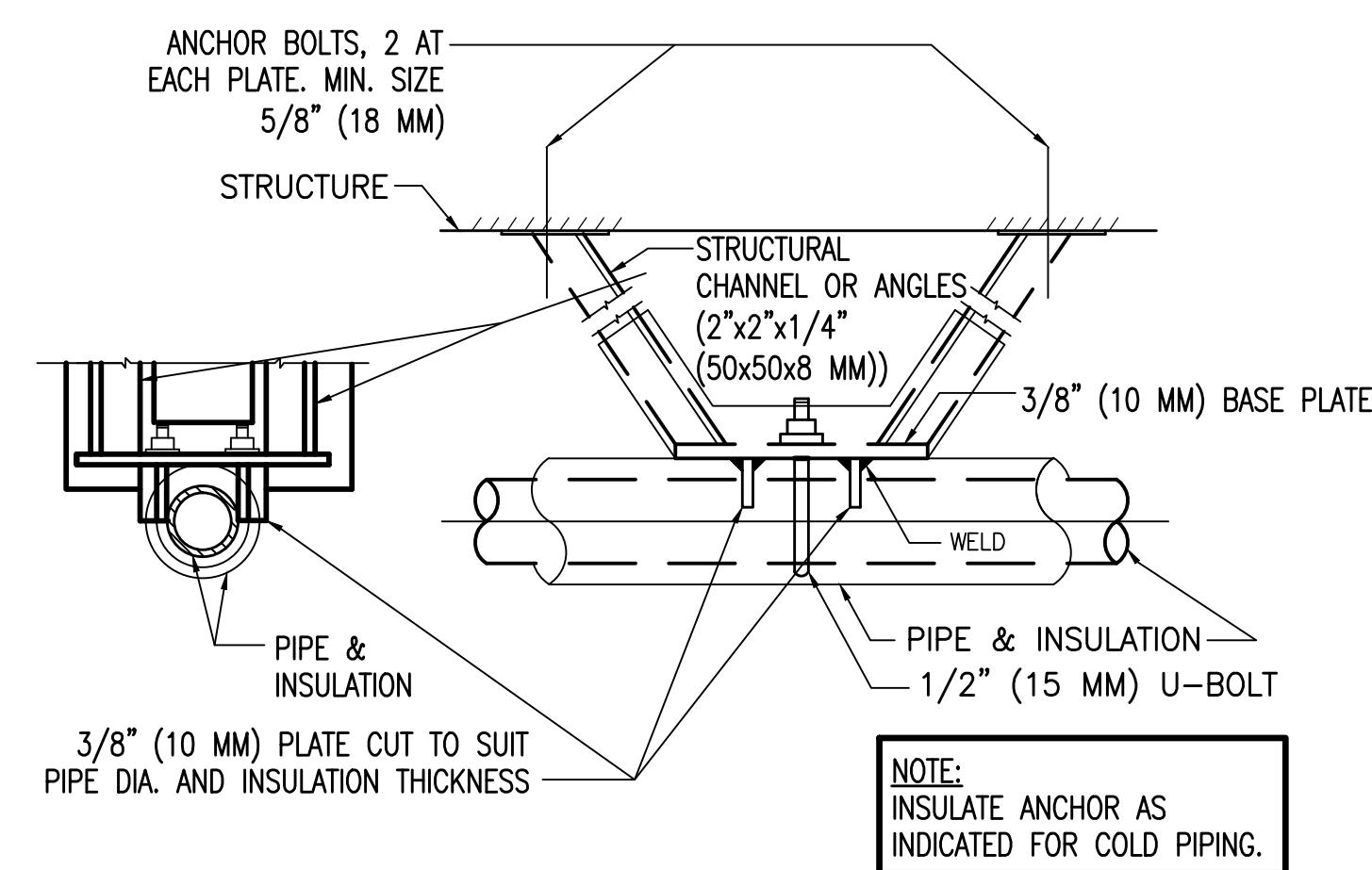
STEAM COIL PIPING DETAIL
SCALE: NONE



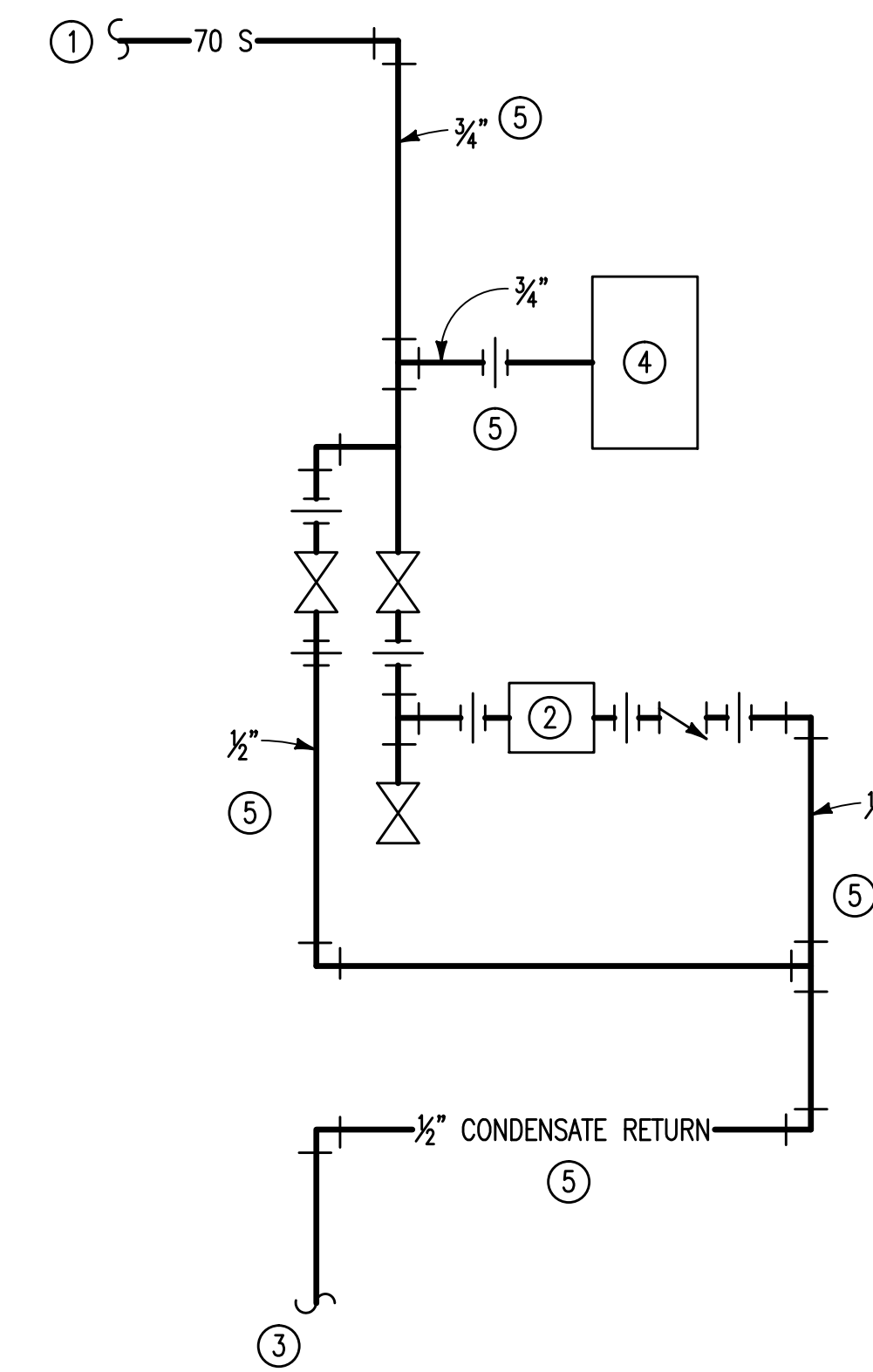
TYPICAL BYPASS CHEMICAL FEEDER
SCALE: NONE



TRAPEZE PIPE HANGER
SCALE: NONE



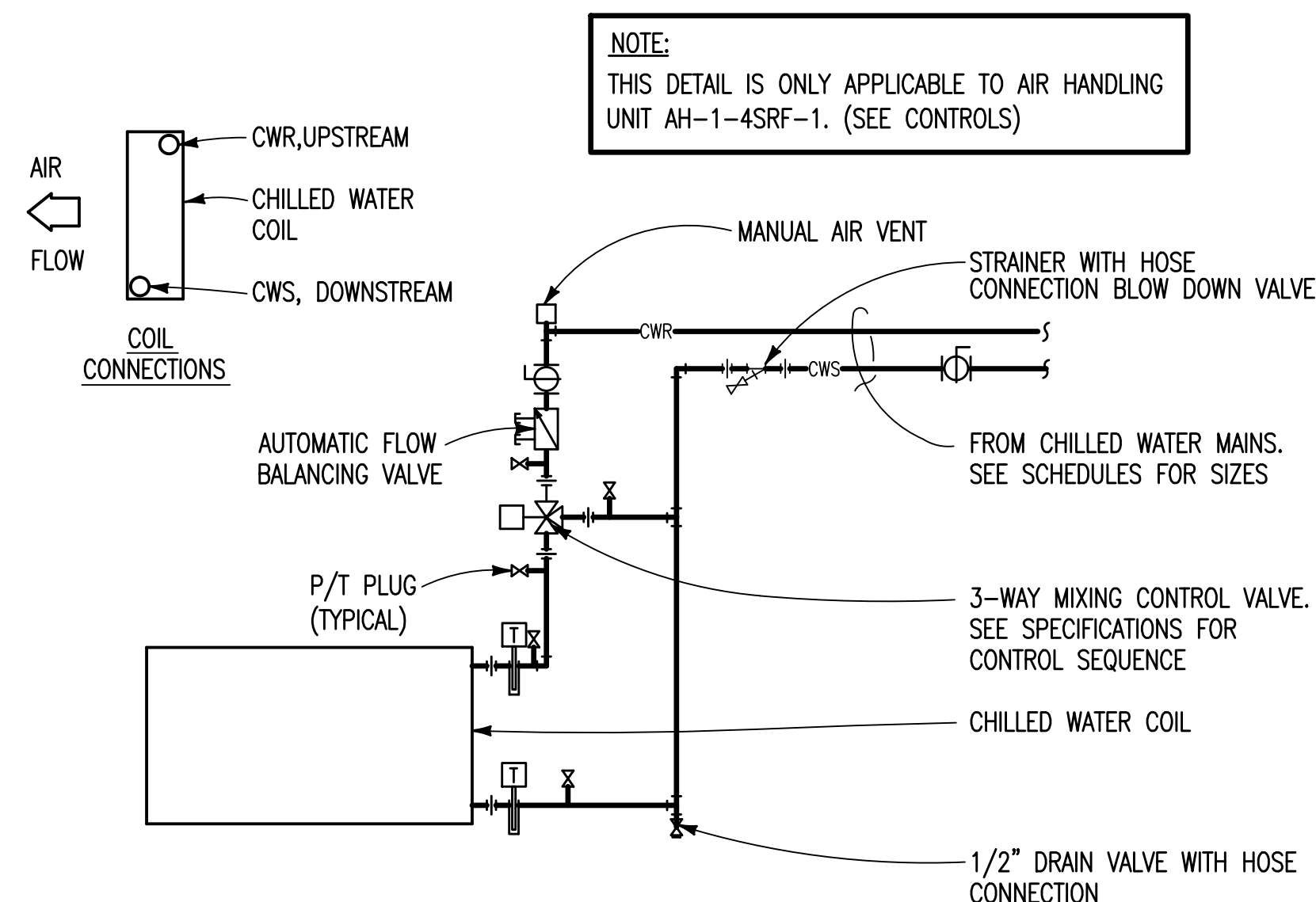
HORIZONTAL PIPE ANCHOR DETAIL
SCALE: NONE



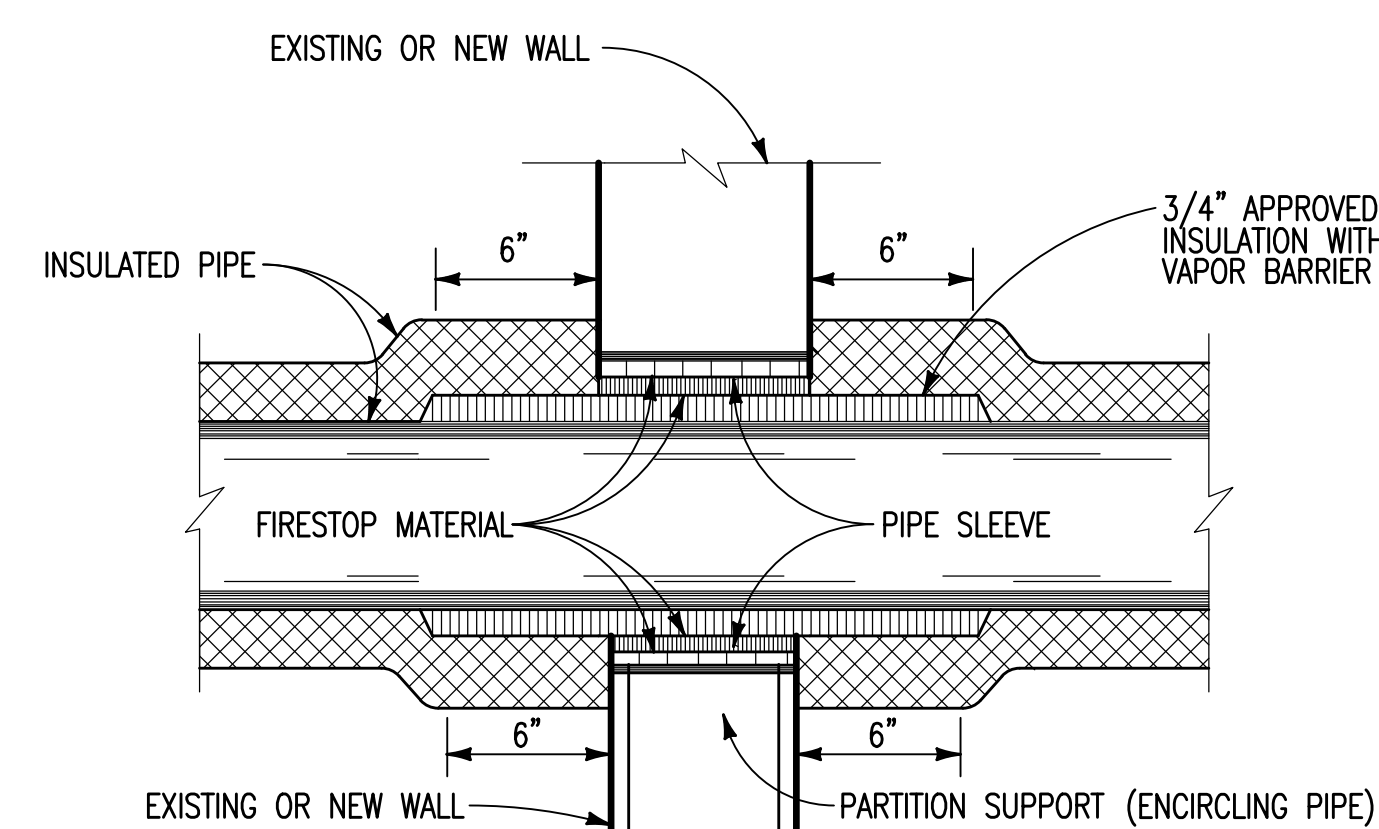
STEAM WAND DETAIL
SCALE: NONE

- NOTES:**
(STEAM WAND DETAIL ONLY)

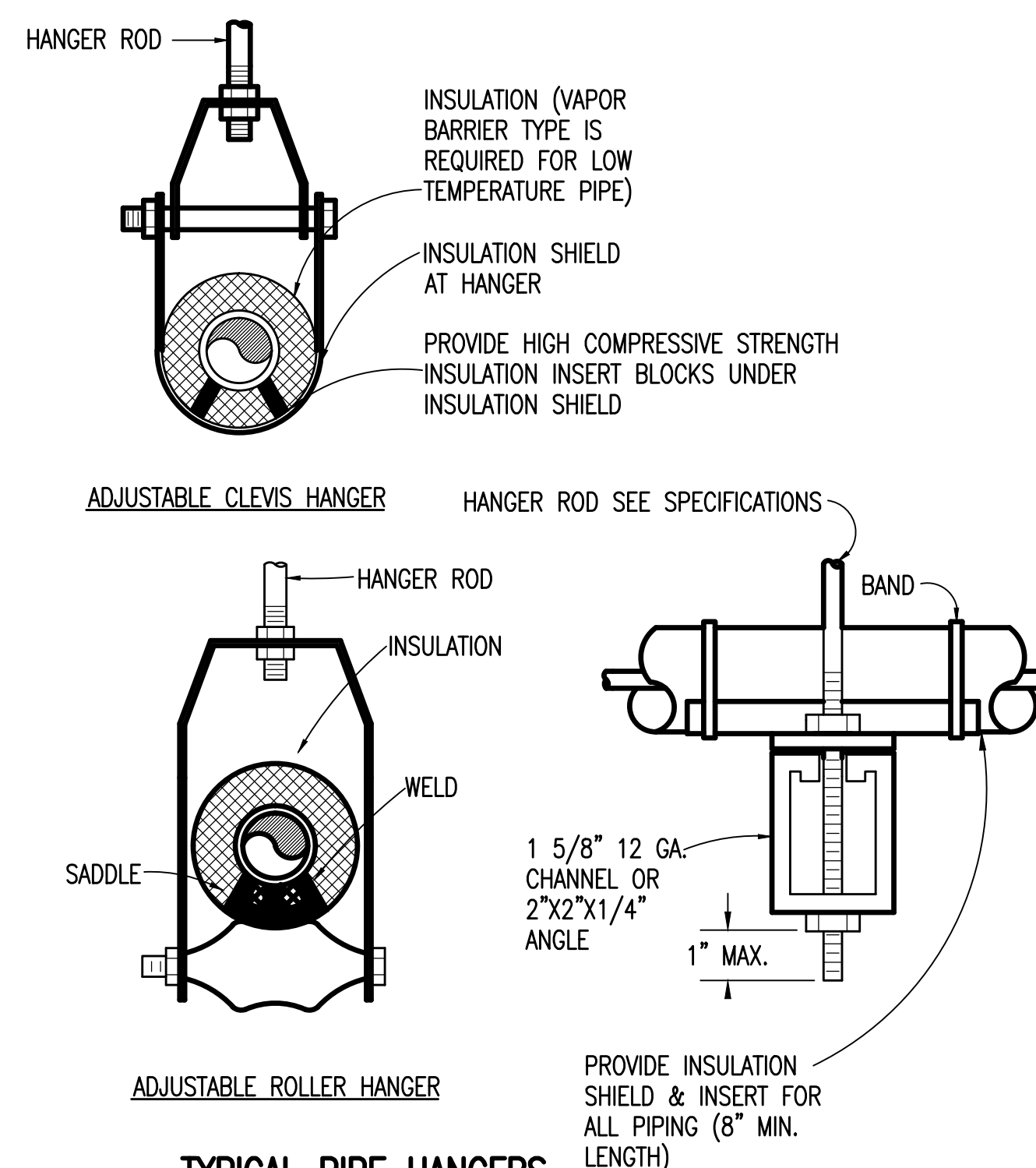
- ① 70 PSIG STEAM. SEE FLOOR PLAN.
- ② 15 LB/HR DRIP STATION. SEE DRIP STATION DETAIL. PROVIDE BY-PASS.
- ③ CONDENSATE RETURN. SEE FLOOR PLAN.
- ④ STEAM WAND UNIT AS SPECIFIED.
- ⑤ INSULATE ALL EXPOSED PIPING PER SPECIFICATION WITH STAINLESS STEEL OUTER JACKET.



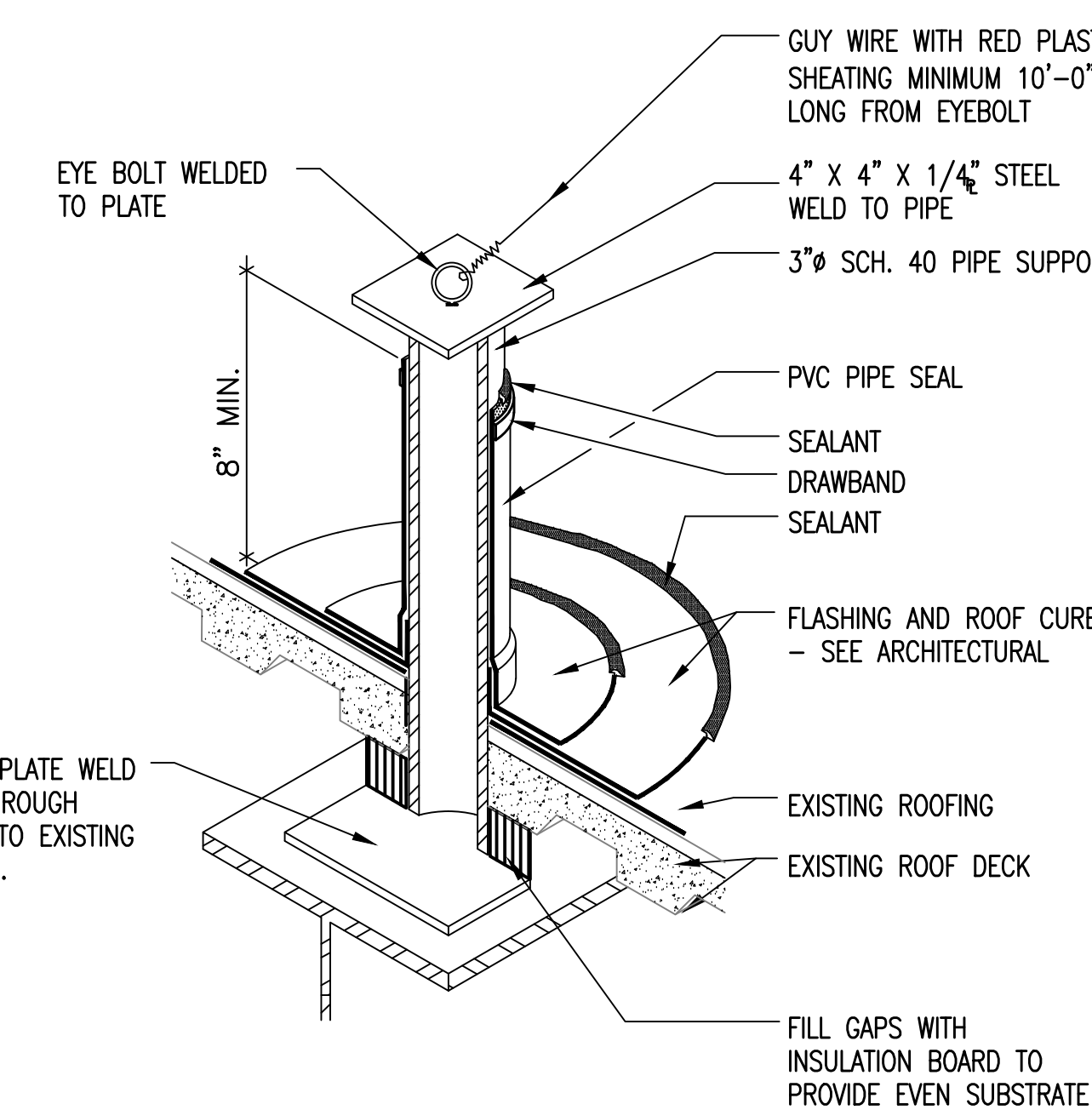
3 WAY
CONTROL VALVE CHILLED WATER COIL PIPING
SCALE: NONE



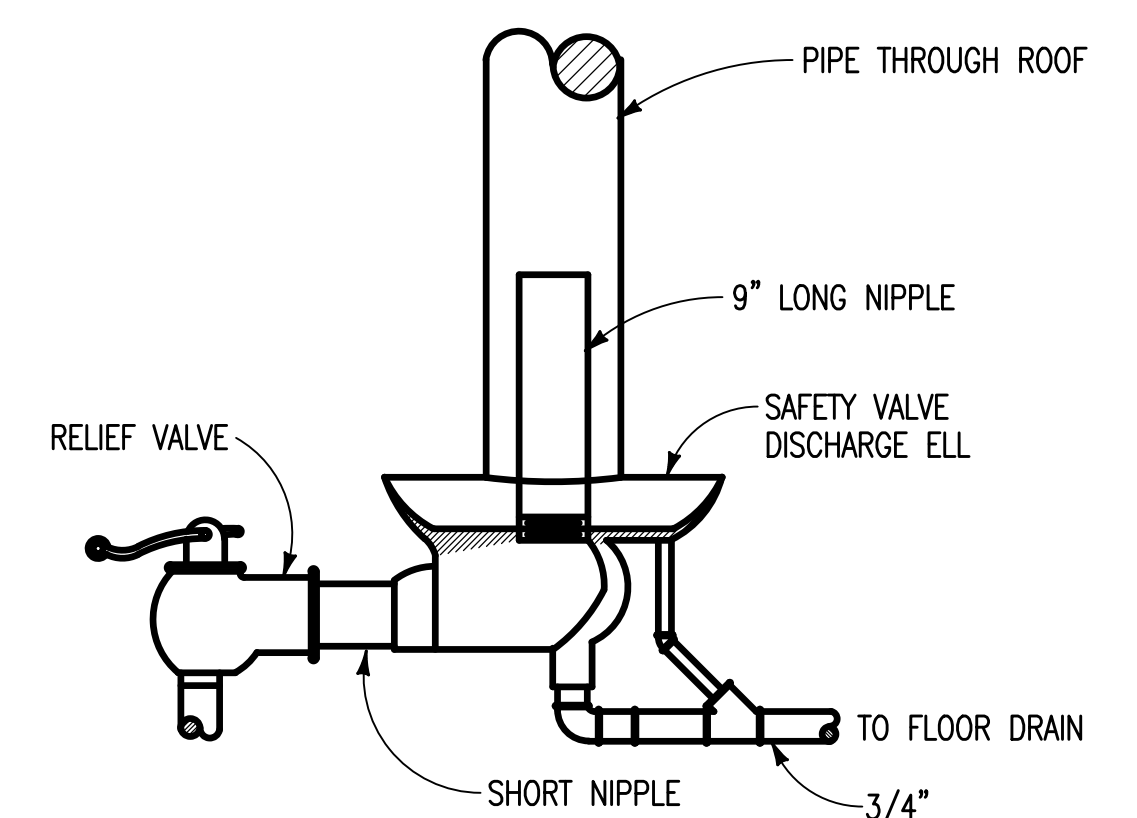
PARTITION OR CHASE PENETRATION
PIPE PENETRATION OF FIRE/SMOKE BARRIERS
SCALE: NONE



TYPICAL PIPE HANGERS
SCALE: NONE



GUY WIRE SUPPORT DETAIL
SCALE: NONE



STEAM RELIEF VALVE DETAIL
SCALE: NONE

[illegible]