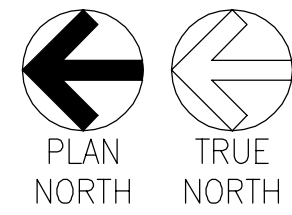
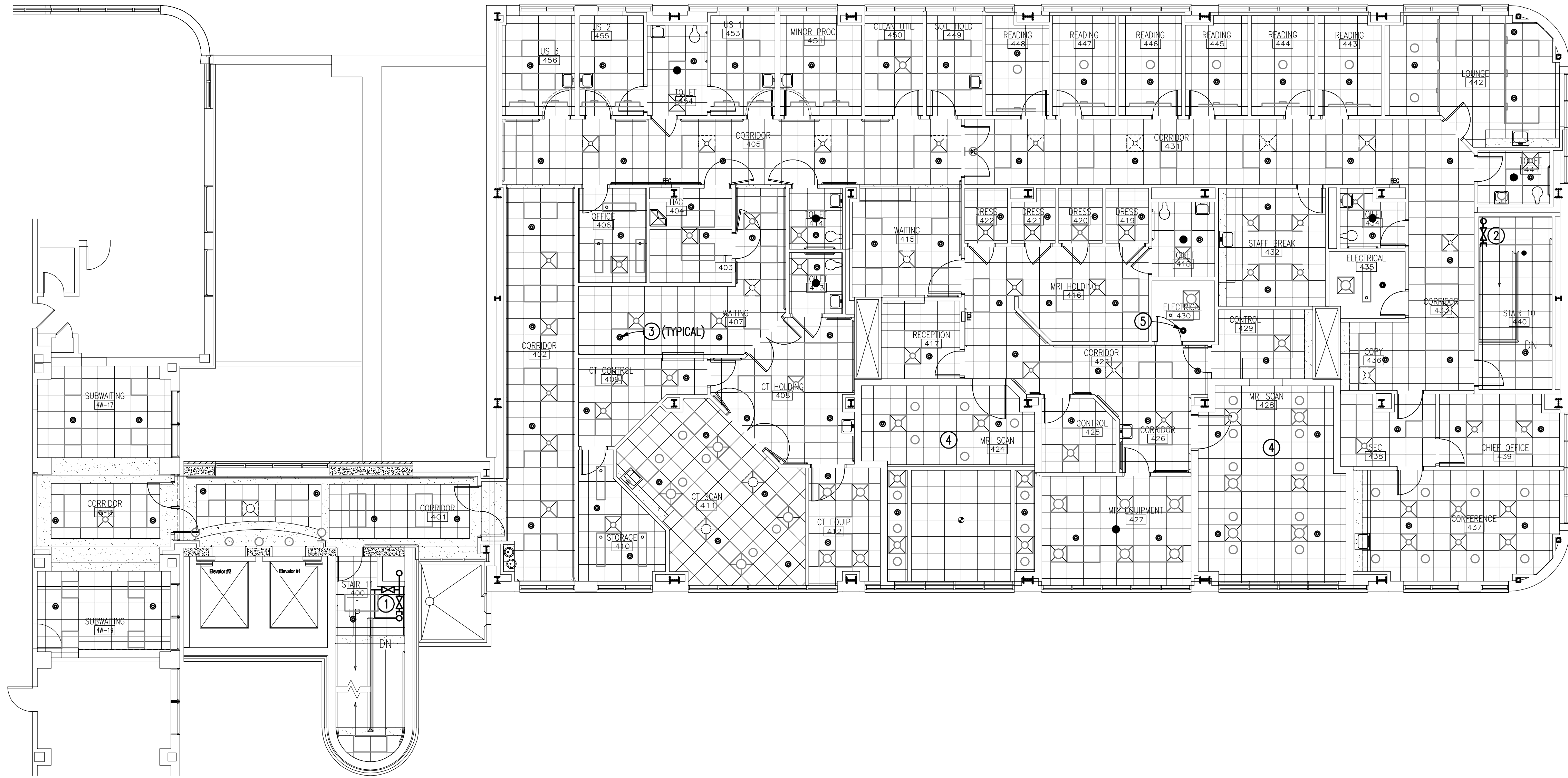


Drawing File: H:\2013\5123-VA Shreveport 3rd and 4th Floors\Drawings\F02-5123 FP 102.dwg
Plotted By: jpwant
Plotted Date: May 11, 2015 - 3:56pm

A three inches = one foot
B one and one-half inches = one foot
C one inch = one foot
D three-quarters inch = one foot
E one-half inch = one foot
F three-eighths inch = one foot
G one-quarter inch = one foot
H one-eighth inch = one foot



FOURTH FLOOR PLAN - FIRE PROTECTION

SCALE: 1/8" = 1'-0"

0 4' 8' 16'

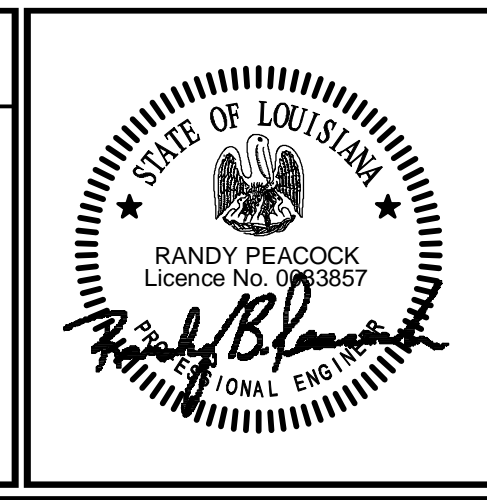
NEW WORK KEYED NOTES:
(THIS DRAWING ONLY)

- EXISTING STANDPIPE AND ZONE VALVE.
- CONNECT TO EXISTING 6" STANDPIPE AND EXTEND TO FOURTH FLOOR. FIRE HOSE CONNECTION SHALL BE INSTALLED IN ACCORDANCE WITH NFPA 14.
- INSTALL PENDENT SPRINKLER HEADS IN ACCORDANCE WITH NFPA 13. ROOMS WITH GYPSUM BOARD CEILINGS HEADS SHALL BE EVENLY SPACED AND COORDINATED WITH OTHER CEILING EQUIPMENT. ROOMS WITH ACOUSTICAL TILE CEILINGS HEADS SHALL BE INSTALLED IN THE CENTER OF CEILING TILE.
- MRI SUITES SHALL BE PIPED WITH NON-FARRIS MATERIAL.
- INSTALL UPRIGHT SPRINKLER HEADS IN ACCORDANCE WITH NFPA 13 IN ROOMS WITH NO CEILINGS.

FINAL SUBMITTAL

Revisions:	Date

CONSULTANTS:
CLARK•NEXSEN
440 MARTIN LUTHER KING, JR. BLVD. MACON, GA 31201 478-743-8415 FAX 478-743-8239 WWW.CLARKNEXSEN.COM



ARCHITECT:
TOLAND MIZELL MOLNAR
590 Means Street NW, Suite 200 Atlanta, GA 30318 404.214.9774

Drawing Title:
FOURTH FLOOR PLAN
Approved: Project Director

Project Title:
EXPAND RADIOLOGY AND SPS OVERTON BROOKS VAMC
Location:
SHREVEPORT, LA
Date:
04-17-2015
Checked:
RC
Drawn:
PW

Project Number:
667-083
Building Number:
1
Drawing Number:
FP102
Dwg. 145 of 160

OFFICE OF CONSTRUCTION AND FACILITIES MANAGEMENT
VA U.S. Department of Veterans Affairs