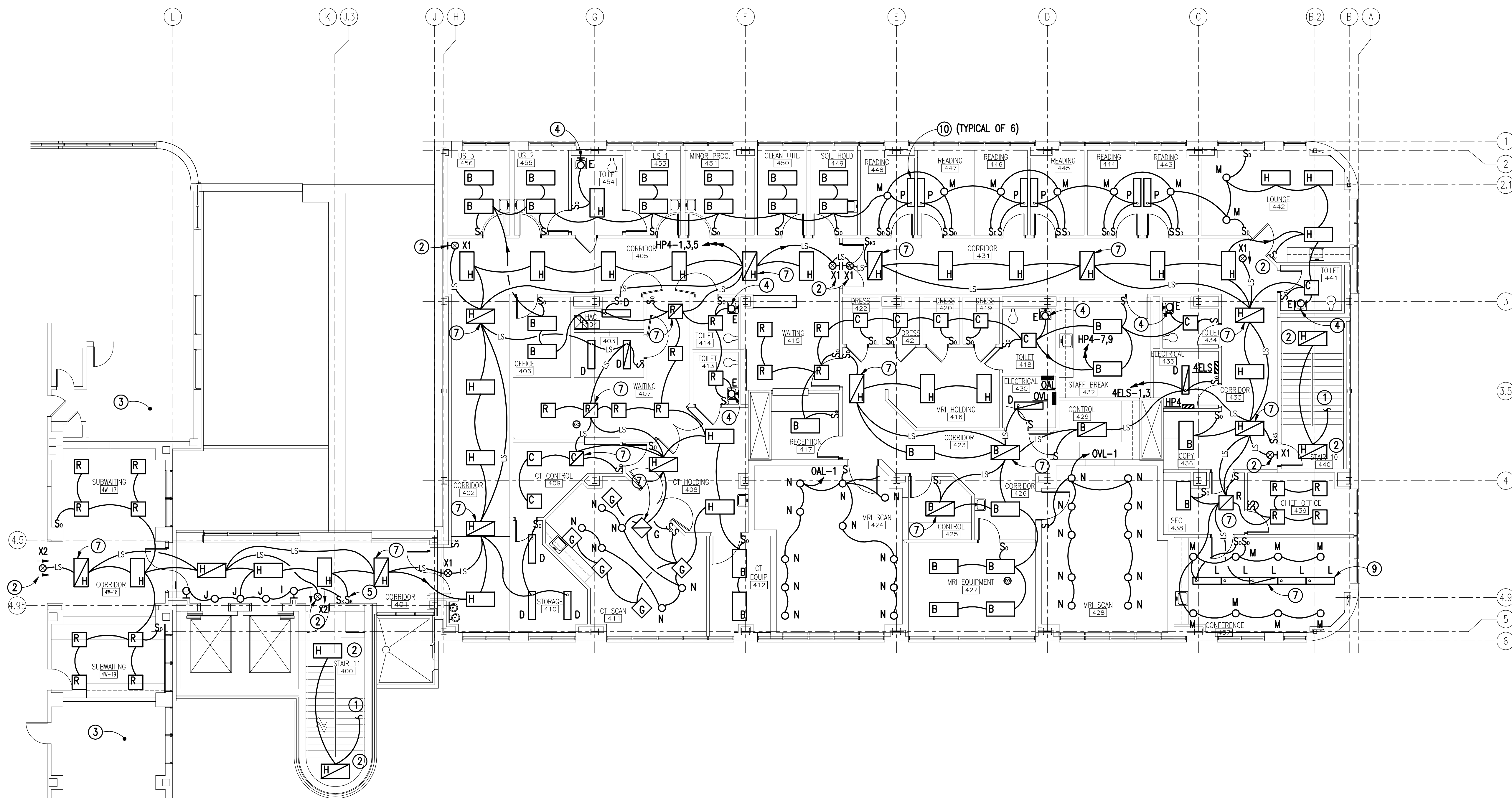


NEW WORK KEYED NOTES:
(THIS DRAWING ONLY)

- 1 MAKE CONNECTIONS TO EXISTING LIGHTING CIRCUIT AT STAIRWELL AREA ON FLOORS BELOW.
- 2 THIS FIXTURE SHALL BE UNSWITCHED.
- 3 NO WORK IN THIS SPACE.
- 4 CEILING FIXTURE OVER MIRROR, COORDINATE EXACT LOCATION PRIOR TO ROUGH-IN.
- 5 COORDINATE EXACT LOCATION OF SWITCHES WITH VA FOR ELEVATOR LOBBY PRIOR TO INSTALLATION.
- 6 PROVIDE DUAL SWITCHING FOR LIGHTING IN THIS SPACE. SWITCH INNER LAMPS ON FIRST SWITCH AND OUTER LAMPS ON SECOND SWITCH, CONSISTENTLY THROUGH ROOM.
- 7 THIS FIXTURE SHALL BE EQUIPPED WITH A GENERATOR TRANSFER DEVICE AND SHALL BE CONNECTED TO BOTH A SWITCHED LEG OF THE NORMAL POWER CIRCUIT AND AN UNSWITCHED LEG OF THE EMERGENCY POWER CIRCUIT INDICATED. SEE GENERATOR TRANSFER DRIVE WIRING DIAGRAM SHEET E001.
- 8 MAKE ALL CONNECTIONS TO EXISTING NORMAL POWER LIGHTING CIRCUIT LEFT ABANDONED IN THIS SPACE.
- 9 COORDINATE EXACT MOUNTING HEIGHT OF LINEAR SUSPENDED FIXTURE PRIOR TO INSTALLATION.
- 10 COORDINATE EXACT MOUNTING HEIGHT OF WALL-MOUNTED LINEAR SCONCE PRIOR TO ROUGH-IN.



NEW WORK
FOURTH FLOOR ELECTRICAL PLAN - LIGHTING
SCALE: 1/8" = 1'-0"

Revisions:	Date

CONSULTANTS:
CLARK•NEXSEN
440 MARTIN LUTHER KING, JR. BLVD. MACON, GA 31201 478-743-8415 FAX 478-743-8239 WWW.CLARKNEXSEN.COM



ARCHITECT:
TOLAND MIZELL MOLNAR
590 Means Street NW, Suite 200 Atlanta, GA 30318 404.214.9774

Drawing Title:
NEW WORK FOURTH FLOOR ELECTRICAL PLAN LIGHTING
Approved: Project Director

Project Title:
EXPAND RADIOLOGY AND SPS OVERTON BROOKS VAMC
Location:
SHREVEPORT, LA
Date:
04-17-2015
Checked:
CBC
Drawn:
SJB

Project Number:
667-083
Building Number:
1
Drawing Number:
EL102
Dwg. 148 of 160

FINAL SUBMITTAL
OFFICE OF CONSTRUCTION AND FACILITIES MANAGEMENT
VA U.S. Department of Veterans Affairs