

ASBESTOS CONTAINING MATERIALS ASSESSMENT

OF THE

BROOKLYN VETERAN'S ADMINISTRATION MEDICAL CENTER



BUILDING #1

800 POLY PLACE
BROOKLYN, NY 11209

JUNE 17TH, 2010

ASBESTOS CONTAINING MATERIALS ASSESSMENT

OF THE

BROOKLYN

VETERAN'S ADMINISTRATION MEDICAL CENTER

BUILDING #1

800 POLY PLACE
BROOKLYN, NY 11209

JUNE 17TH, 2010

PREPARED FOR:

VETERAN'S ADMINISTRATION MEDICAL CENTER, BROOKLYN
800 POLY PLACE
BROOKLYN, NY 11209

PREPARED BY:

DCS INFRASTRUCTURE
3239 ROUTE 112, SUITE 4B
MEDFORD, NY 1179


JOHN J. PASULLI, INSPECTOR

DONALD STOUT, PROFESSIONAL ENGINEER

CONTENTS

1.0	EXECUTIVE SUMMARY.....	1
2.0	AUTHORIZATION AND ACCESS.....	3
3.0	SITE SETTING.....	3
4.0	PREVIOUS DATA.....	3
5.0	BULK SAMPLING AND ANALYTICAL METHODOLOGIES	4
6.0	SUMMARY OF ASBESTOS CONTAINING MATERIALS.....	6
7.0	PHYSICAL ASSESSMENT CRITERIA.....	7
8.0	RESPONSE ACTIONS.....	8
9.0	RECOMMENDATIONS.....	8

APPENDICES

APPENDIX A	DRAWINGS
APPENDIX B	SUPPORTING ANALYTICAL DOCUMENTATION
APPENDIX D	PHOTOGRAPHIC RECORD
APPENDIX E	PERSONNEL AND FIRM CERTIFICATIONS
APPENDIX F	GLOSSARY OF TERMS

1.0 EXECUTIVE SUMMARY

DCS INFRASTRUCTURES HAS BEEN RETAINED TO SURVEY BUILDING #1 OF THE VETERAN'S ADMINISTRATION MEDICAL CENTER, 800 POLY PLACE, BROOKLYN, NY, TO CONFIRM LOCATIONS AND CONDITIONS OF PREVIOUSLY IDENTIFIED ASBESTOS CONTAINING MATERIALS (ACM'S) WITHIN THE BUILDING.

DCS/INSIGHT WAS ALSO CHARGED WITH DEVELOPING RESPONSE ACTION RECOMMENDATIONS FOR MATERIALS PREVIOUSLY IDENTIFIED OR NEWLY ENCOUNTERED DURING THE COURSE OF SITE RECONNAISSANCE. DCS INFRASTRUCTURES SUBCONTRACTED INSIGHT ENVIRONMENTAL, INC. TO ASSIST IN THE BUILDING SURVEY AND PREPARATION OF NEW DRAWINGS AND DIGITAL FILES OF DRAWINGS IDENTIFYING REMAINING LOCATIONS OF ACM'S.

THE VAST MAJORITY OF FRIABLE (CAPABLE OF BEING REDUCED TO POWDER BY HAND PRESSURE) ASBESTOS CONTAINING MATERIALS ARE INACCESSIBLE TO PATIENTS, STAFF AND THE GENERAL PUBLIC.

ORIGINAL CORK BOARD INSULATED DUCTWORK REMAINS IN A FEW AREAS OF THE HOSPITAL. THIS DUCTWORK HAS ASBESTOS CONTAINING SEAM CEMENT THAT IS DETERIORATED AND SHOULD BE ABATED IN ALL AREAS IDENTIFIED AS EARLY AS IS PRACTICAL.

THERMAL SYSTEM INSULATION REMAINING IN PIPE CHASES IS GENERALLY IN POOR CONDITION AND HAS REACHED THE END OF ITS SERVICE LIFE. ASBESTOS CONTAINING PIPE INSULATION AND FITTING INSULATION DEBRIS WAS ALSO NOTED IN THE BOTTOMS OF SEVERAL ACCESSIBLE PIPE CHASES.

AREAS RECOMMENDED FOR IMMEDIATE ABATEMENT INCLUDE:

MATERIAL/SYSTEM	FLOOR #	ROOM #	NOTES
PIPE WRAP - TSI DCW/DHW	16	16-210-16-108	DEBRIS IN BOTTOM OF CHASE
PIPE WRAP - TSI DCW/DHW	16	16-319-16-318	DEBRIS IN BOTTOM OF CHASE
PIPE WRAP - TSI STEAM RISER	16	16-310	IMPACT DAMAGED 6" STEAM RISER, 8 L.FT.
DUCT INSULATION - TSI	10	10-116	DAMAGED, 80 SQ. FT.
PIPE WRAP - TSI DCW/DHW	8	8-310-8-311	DEBRIS IN BOTTOM OF CHASE
TEXTURED CEILING PLASTER - SURFACING	7	7-113	SIG. DAM. CEILING PLASTER ABOVE DROP CEILING, 350 sq. FT.
9x9 BLACK VAT - MISC.	5	5-119	SIG. DAM.; 21 sq. FT.
PIPE WRAP - TSI DCW/DHW	5	544-A	CHASE PARTIALLY ABATED, DEBRIS ON FLOOR; 30 LIN. FT.
TEXTURED CEILING PLASTER -	4	4-110	SIG. LOC. DAMAGE.; 36 sq.ft.

SURFACING			
PIPE WRAP - TSI DCW/DHW	4	4-319	DEBRIS IN BOTTOM OF CHASE
DUCT INSULATION - TSI	4	CORRIDOR NC 1A	DAMAGED, ABOVE DROP CEILING; 260 SQ. FT.
PIPE WRAP - TSI DCW/DHW	4	CORRIDOR NC 1A	DEBRIS ABOVE DROP CEILING
PIPE WRAP - TSI STEAM RISER	3	3-525-B	IMPACT DAMAGE, PATCH 2 SQ. FT.
TEXTURED CEILING PLASTER - SURFACING	1	1-113 C	SIG. DAM. FROM INSTALLATION OF DROP CEILING; 161 SQ. FT.
DUCT INSULATION - TSI	1	1-512A-1-513A	DAMAGED DUCT INSULATION ABOVE PLASTER CEILING; 40 SQ. FT.

ALL OTHER AREAS CONTAINING THERMAL SYSTEM INSULATION ARE RECOMMENDED FOR SYSTEMATIC ABATEMENT AS EARLY AS IS PRACTICAL. TIMING AND PHASING OF THESE ABATEMENTS SHOULD BE DOVETAILED TO MEET EXISTING OR FUTURE PLANNED RENOVATION WORK.

TEXTURED (ACOUSTICAL) CEILING PLASTER REMAINS IN FAIR CONDITION. CONTINUED SURVEILLANCE IS RECOMMENDED.

NON-FRIABLE ORGANICALLY BOUND (NOB) ASBESTOS CONTAINING MATERIALS INCLUDING VINYL ASBESTOS TILE (VAT), MASTIC UNDER VAT, TRANSITE LABORATORY BENCH TOPS, BEAKER DRYING RACKS AND FUME HOOD LININGS ARE ALL IN GOOD CONDITION AND CONTINUED SURVEILLANCE IS RECOMMENDED.

IT IS NOTED THAT ADDITIONAL SUSPECT ASBESTOS CONTAINING MATERIALS WERE IDENTIFIED DURING THE COURSE OF THIS INSPECTION AND INCLUDE ALL VINYL FLOOR TILES AND MASTICS THAT WERE PREVIOUSLY DEEMED NEGATIVE BY POLARIZED LIGHT MICROSCOPY (PLM) ANALYSIS.

THE ADDITION OF THESE MATERIALS IS ATTRIBUTABLE TO REVISIONS MADE IN 1993 BY THE NEW YORK STATE DEPARTMENT OF HEALTH (NYSDOH) ENVIRONMENTAL LABORATORY APPROVAL PROGRAM (ELAP) CERTIFICATION MANUAL WHICH STATES THAT ALL PLM NEGATIVE NON-FRIABLE ORGANICALLY BOUND (NOB) MATERIALS MUST BE REMANDED FOR HIGHER RESOLUTION TRANSMISSION ELECTRON MICROSCOPY FOR A DEFINITIVE RESULT. THESE MATERIALS ARE PRESUMED ASBESTOS CONTAINING MATERIALS (PACM), AND FURTHER ANALYTICAL WORK IS INDICATED TO ASCERTAIN LOCATIONS AND QUANTITIES OF THESE MATERIALS.

THE FINDINGS OF THIS ASSESSMENT ARE MANIFESTED IN THE TEXT OF THIS REPORT, APPENDICES, SET OF ACCOMPANYING DRAWINGS AND COMPACT DISCS CONTAINING PORTABLE DOCUMENT FILE (PDF) AND AUTOCAD (.DWG) DRAWINGS. SUPPLEMENTAL RECOMMENDATIONS TO ASSIST IN DEVELOPMENT OF A COMPREHENSIVE NOTIFICATION, TRAINING AND MANAGEMENT PROGRAM ARE OFFERED IN SECTION 7.0 OF THIS REPORT.

2.0 SITE SETTING

BUILDING #1 IS AN EIGHTEEN STORY REINFORCED CONCRETE MEDICAL FACILITY ESTIMATED TO HAVE BEEN CONSTRUCTED IN 1947. IT CONTAINS A THREE STORY PENTHOUSE AND HAS THREE ADDITIONS TO THE BASE STRUCTURE INCLUDING BUILDING #6 (1958), BUILDING #8 (1969) AND THE TRIPLE BANK ELEVATORS AT THE SOUTH SIDE OF THE BUILDING (CONSTRUCTION DATE UNKNOWN). BUILDING 6 AND 8 WERE BEYOND THE SCOPE OF THIS ASSESSMENT. FLOORS 17-20 CONTAIN MECHANICAL EQUIPMENT AND HAVE BEEN ABATED IN THEIR ENTIRETY PRIOR TO THE TIME OF OUR INSPECTION.

3.0 AUTHORIZATION AND ACCESS

THIS WORK WAS PERFORMED WITH AUTHORIZATION BY THE VETERAN'S ADMINISTRATION MEDICAL CENTER, BROOKLYN FACILITIES AND ENGINEERING DEPARTMENT CONTRACT #630A4-09-412.

THE VAMC'S FACILITIES AND ENGINEERING DEPARTMENT PROVIDED ACCESS TO ALL REASONABLY ACCESSIBLE AREAS OF THE BUILDING DURING DAYTIME HOURS. MR. LLOYD CALLAHAN OF THE VAMC FACILITIES AND ENGINEERING DEPARTMENT ESCORTED MR. PACIULLI OF DCS INFRASTRUCTURE THROUGH PORTIONS OF THE INSPECTION. ADDITIONALLY, A MASTER PIPE CHASE KEY WAS PROVIDED BY MR. CALLAHAN TO MR. PACIULLI.

IT IS NOTED THAT MANY AREAS WERE INACCESSIBLE AT TIMES OF INSPECTION. PRINCIPAL REASONS FOR DIMINISHED ACCESS INCLUDED LOCKED DOORS, BROKEN HATCH LOCKS, OR A DIFFERENT MASTER HATCH KEY WAS UTILIZED.

MR. CALLAHAN PROVIDED ACCESS TO THE MAIN VERTICAL PLUMBING CHASE, REPRESENTATIVE ELECTRICAL CLOSETS, STAND PIPE CLOSETS AND CUSTODIAL MAINTENANCE CLOSETS.

CHASES IN GANG BATHROOMS ON PATIENT FLOORS WERE INACCESSIBLE DUE TO INSTALLATION OF TOILET PARTITION WALLS OVERLYING HATCH DOORS.

4.0 PREVIOUS DATA

THIS REPORT INCORPORATES DATA OBTAINED FROM TWO PARTIAL SURVEYS OF BUILDING #1 CONDUCTED BY GALSON TECHNICAL SERVICES, INC.

INITIAL INSPECTION WORK WAS CONDUCTED ON FLOORS 1-5, 8, 12, 13, 15 AND 17. IN APRIL AND MAY OF 1988. FINDINGS FROM THIS INSPECTION WERE MANIFESTED IN A JUNE 1988 REPORT TITLED "ASBESTOS MATERIALS ASSESSMENT AT THE VETERAN'S ADMINISTRATION MEDICAL CENTER, BROOKLYN, NY. THE VA PROJECT NUMBER FOR THIS WORK WAS 527-86-1220.

ADDITIONAL INSPECTION WORK WAS CONDUCTED ON FLOORS 6, 7, 9, 10, 11, 14, 16, GROUND FLOOR AND PENTHOUSE BETWEEN MARCH AND JULY OF 1990. THE FINDINGS OF THIS REPORT WERE MANIFESTED IN A NOVEMBER 1990 REPORT TITLED "PHASE II ASBESTOS MATERIALS ASSESSMENT AT THE VETERAN'S ADMINISTRATION MEDICAL

CENTER, BROOKLYN, NY." THE VA PROJECT NUMBER FOR THIS WORK WAS 527-89-1210.

THESE REPORTS AND DRAWINGS WERE REVIEWED AND CONFIRMED WHEN POSSIBLE, HOWEVER, ROOM DESIGNATIONS ORIGINALLY UTILIZED IN THESE DRAWINGS ARE INCONSISTENT WITH THOSE ENCOUNTERED THROUGHOUT THE BUILDING. FURTHERMORE, MANY OF THE ORIGINAL DRAWINGS ARE MULTI-GENERATIONAL PHOTOCOPIES AND WERE ILLEGIBLE TO VARYING EXTENTS.

5.0 BULK SAMPLING AND ANALYTICAL METHODOLOGIES

BULK SAMPLING WAS CONDUCTED IN ACCORDANCE WITH US EPA GUIDANCE DOCUMENT: BULK SAMPLING, A SIMPLIFIED GUIDE TO BUILDING ASBESTOS SURVEY.

ASBESTOS CONTAINING BUILDING MATERIALS (ACBM) ARE DIVIDED INTO THREE MAIN CATEGORIES. THESE CATEGORIES AND SOME EXAMPLES INCLUDE:

THERMAL SYSTEM INSULATION

THERMAL SYSTEM INSULATION IS A CLASSIFICATION OF ASBESTOS CONTAINING MATERIALS USED TO DESCRIBE ANY PRODUCT INSTALLED OR FIELD APPLIED WHOSE PRIMARY APPLICATION IS THERMAL RETENTION. EXAMPLES WOULD INCLUDE PIPE INSULATION, FITTING INSULATION, BOILER JACKET/BREECHING, EXPANSION TANKS, ETC.

SURFACING MATERIALS

SURFACING MATERIALS ARE THOSE MATERIALS USED PRIMARILY PROVIDE SURFACE FINISH. EXAMPLES OF SURFACING MATERIAL WOULD INCLUDE WALL PLASTER, ACOUSTICAL CEILING PLASTER, STUCCO OR SIMILAR WALL TREATMENT.

MISCELLANEOUS MATERIALS

MISCELLANEOUS MATERIALS ARE ALL OTHER BUILDING MATERIALS

- TWO BULK SAMPLES WERE COLLECTED OF EACH SUSPECT MISCELLANEOUS MATERIAL.
- BULK SAMPLES WERE COLLECTED IN UN-OCCUPIED SPACES WHEREVER FEASIBLE.
- DROP CLOTHS WERE PLACED BELOW SAMPLE AREAS.
- ALL SAMPLE LOCATIONS WERE SPRAYED WITH SURFACTANT AMENDED WATER SOLUTION PRIOR TO COLLECTION WITH CORK BORER OR RAZOR KNIFE.
- SAMPLES WERE SEALED IMMEDIATELY AFTER COLLECTION IN POLYETHYLENE BAGS.
- ALL DEBRIS GENERATED WAS REMOVED USING A HIGH EFFICIENCY PARTICULATE ARRESTING (HEPA) FILTER EQUIPPED VACUUM.

ALL SUSPECT ASBESTOS CONTAINING MATERIALS WERE REMANDED FOR POLARIZED LIGHT MICROSCOPY (PLM) ANALYSIS IN ACCORDANCE WITH NYS ELAP CERTIFICATION MANUAL TO DETERMINE % ASBESTOS BY WEIGHT.

TWO SAMPLES PER HOMOGENEOUS AREA WERE REMANDED FOR ANALYSIS OF EACH MISCELLANEOUS MATERIAL. NON FRIABLE ORGANICALLY BOUND (NOB) MATERIALS

DEEMED NEGATIVE WERE REMANDED FOR TRANSMISSION ELECTRON MICROSCOPY (TEM) ANALYSIS FOR A DEFINITIVE RESULT.

6.0 SUMMARY OF ASBESTOS CONTAINING MATERIAL INVENTORY

ASBESTOS CONTAINING THERMAL SYSTEM INSULATION (TSI) REMAINING INCLUDES;

- 1.) STEAM HEAT LINES INSULATED WITH MAG-BLOCK.

STEAM LINES IN MECHANICAL EQUIPMENT ROOMS (MER'S) HAVE BEEN ABATED BUT REMAIN WITHIN THE MAIN STEAM PIPE RISER CHASE AND IN PLENUMS AT CORRIDORS AND PERIMETER WALLS ABOVE ORIGINAL PLASTER CEILINGS.

SOME AREAS OF PERIMETER STEAM LINES HAVE BEEN ABATED DURING MAJOR RENOVATION PROJECTS, HOWEVER IT REMAINS IN AREAS WHERE SMALLER ARCHITECTURAL MODIFICATIONS WERE MADE.

- 2.) DOMESTIC HOT WATER (DHW) LINES WITH CORRUGATED PAPER (AIR-CELL).

DHW LINES HAVE BEEN ABATED IN MECHANICAL EQUIPMENT ROOMS THROUGHOUT THE BUILDING.

DHW LINES HAVE ALSO BEEN ABATED IN AREAS THAT UNDERWENT SIGNIFICANT ARCHITECTURAL RENOVATION SINCE 1990.

DHW LINES REMAIN IN THE MAJORITY OF CHASES THROUGHOUT THE BUILDING.

- 3.) DOMESTIC COLD WATER (DCW) AND ROOF DRAIN LINES WITH WOUND PAPER (WOOL).

DCW LINES HAVE BEEN ABATED IN MECHANICAL EQUIPMENT ROOMS (MER'S) THROUGHOUT THE BUILDING.

DCW LINES REMAIN IN THE MAJORITY OF CHASES THROUGHOUT THE BUILDING.

ROOF DRAIN LINES ARE ENCOUNTERED IN CEILING CAVITIES OF THE 16TH AND 4TH FLOORS, CUSTODIAL MAINTENANCE CLOSETS IN GANG BATHROOMS AND IN STAIRWELLS 1 AND 2.

DAMAGED RISERS HAVE BEEN ABATED IN SOME STAIRWELL SEGMENTS, BUT NOT ENTIRELY.

- 4.) SUPPLY SIDE VENTILATION SYSTEM IS INSULATED WITH CORK BOARD AND ASBESTOS JOINT CEMENT.

THE VAST MAJORITY OF THESE TRUNK LINES HAVE BEEN ABATED. BUT DO REMAIN IN CEILING CAVITIES IN LOCALIZED AREAS. ABATEMENT IS

RECOMMENDED IN ALL AREAS THIS MATERIAL REMAINS AS IT IS DAMAGED AND REACHED THE END OF ITS SERVICE LIFE.

PLEASE REFER TO APPENDIX A FOR DRAWINGS DEPICTING THESE LOCATIONS.

ORIGINAL ASBESTOS CONTAINING SURFACING MATERIALS INCLUDE:

1.) TEXTURED CEILING PLASTER.

TEXTURED CEILING PLASTER EXISTS THROUGHOUT THE BUILDING IN ORIGINAL KITCHENS, NURSES STATIONS, LOCKER ROOMS, GANG BATHROOMS, LABORATORIES, PARTS OF THE CORE AND THE 1ST FLOOR MAIN LOBBY.

THESE CEILINGS HAVE BEEN ABATED IN AREAS THAT HAVE UNDERGONE SIGNIFICANT ARCHITECTURAL RENOVATION SINCE 1990, BUT REMAIN IN ALL OTHERS. SUSPENDED ACOUSTICAL CEILING TILES ENCLOSE SOME OF THESE CEILINGS.

PLEASE REFER TO APPENDIX A FOR DRAWINGS DEPICTING THESE LOCATIONS.

ORIGINAL ASBESTOS CONTAINING MISCELLANEOUS MATERIALS INCLUDE:

1.) 9 x 9 VINYL ASBESTOS TILE (VAT)

THE VAST MAJORITY OF VAT HAS BEEN ABATED FROM THE FACILITY, BUT REMAINS ON LOWER FLOORS OF THE NORTH WING OF THE HOSPITAL.

VAT THAT REMAINS IS IN GOOD CONDITION, SURVEILLANCE OF THESE MATERIALS IS RECOMMENDED.

2.) MASTIC UNDER 9 x 9 VAT

WE HAVE NO KNOWLEDGE OF THIS MATERIAL HAVING BEEN ABATED WITH FLOOR TILE IN PREVIOUS RENOVATION PROJECTS, AND PRESUME THAT IT REMAINS.

ANY FUTURE RENOVATION PROJECTS WHERE DISTURBANCE OF NON ASBESTOS CONTAINING TILE IS PLANNED, MUST INCLUDE BULK SAMPLING OF UNDERLYING MASTIC PRIOR TO RENOVATION ACTIVITIES. RESULTS OF THESE ANALYSES WILL VARY GREATLY, SO SEVERAL SAMPLES SHOULD BE TAKEN TO OBTAIN A MORE ACCURATE RESULT.

3.) TRANSITE BENCH TOPS/BEAKER DRYING RACKS

REMAINING LABORATORY BENCH TOPS AND BEAKER DRYING RACKS ARE IN FAIR CONDITION. TRIENNIAL SURVEILLANCE IS RECOMMENDED.

4.) FUME HOOD LININGS

FUME HOOD LININGS ARE IN GOOD CONDITION. TRIENNIAL SURVEILLANCE IS RECOMMENDED.

NEWLY IDENTIFIED ASBESTOS CONTAINING MISCELLANEOUS MATERIALS INCLUDE:

- 1.) 12 X 12 WHITE FLOOR TILE WITH GREEN STREAKS (4.2%)
- 2.) 12 X 12 WHITE FLOOR TILE WITH LIGHT BLUE STREAKS (3.9%)
- 3.) 12 X 12 CREAM FLOOR TILE WITH GOLD AND BROWN STREAKS (4.1%)
- 4.) 12 X 12 WHITE FLOOR TILE WITH BLACK STREAKS (4.5%)
- 5.) 12 X 12 BLUE MOTTLED FLOOR TILE (1.9%)
- 6.) 12 X 12 CREAM FLOOR TILE WITH OLIVE STREAKS (1.2%)
- 7.) 12 X 12 PEBBLE STYLE FLOOR TILE (2.4%)
- 8.) 12 X 12 PITTED GREEN MOTTLED FLOOR TILE (2.2%)
- 9.) 12 X 12 CHOCOLATE BROWN FLOOR TILE (2.0%)
- 10.) 12 X 12 WHITE FLOOR TILE WITH BLACK AND GRAY STREAKS (2.0%)

PLEASE REFER TO APPENDIX A (DRAWINGS) FOR FURTHER DETAIL ON LOCATIONS AND QUANTITIES OF THESE MATERIALS. MASTICS UNDERLYING THESE MATERIALS ARE PRESUMED ASBESTOS CONTAINING MATERIAL (PACM).

7.0 PHYSICAL ASSESSMENT CRITERIA

MATERIAL CONDITION ASSESSMENTS AND DEVELOPMENT OF RESPONSE ACTION RECOMMENDATIONS WERE BASED ON CRITERION ESTABLISHED BY THE US ENVIRONMENTAL PROTECTION AGENCY (EPA) CODIFIED AS 40 CFR PART 763 "THE ASBESTOS HAZARD EMERGENCY RESPONSE ACT" OR AHERA. ADDITIONALLY, THIS ASSESSMENT INCORPORATES DATA OF PREVIOUS INSPECTION REPORTS PREPARED BY GALSON TECHNICAL SERVICES IN 1988 AND 1990.

THIS METHOD OF EVALUATION TAKES SEVERAL VARIABLES INTO CONSIDERATION WHEN ASSESSING POTENTIAL HAZARDS.

FIRST THE INSPECTOR WILL DETERMINE IF THE MATERIAL IS FRIABLE OR NON-FRIABLE IN NATURE AND THEN ASSESS ITS PHYSICAL LOCATION. ACCESSIBILITY IS CLASSIFIED AS LOW, MODERATE OR HIGH.

THE INSPECTOR WILL THEN ASSESS THE POTENTIAL FOR DAMAGE TO THIS MATERIAL BY PATIENTS, MEDICAL AND ADMINISTRATIVE STAFF, CUSTODIAL AND MAINTENANCE PERSONNEL. AGAIN THESE VARIABLES ARE RATED IN GENERAL TERMS; LOW, MODERATE AND HIGH.

POTENTIAL FOR WATER, AIR FLOW, IMPACT, ABRASION, VIBRATION ARE ALSO CONSIDERED IN THIS RUBRIC AND RATED FROM LOW TO HIGH.

DAMAGE IS ASSESSED BY TOTAL AMOUNT AND TYPE OF DAMAGE ENCOUNTERED ACROSS THE HOMOGENEOUS AREA. DAMAGE CATEGORIES ARE;

- 1.) DAMAGED OR SIGNIFICANTLY DAMAGED THERMAL SYSTEM INSULATION
- 2.) DAMAGED FRIABLE SURFACING MATERIAL
- 3.) SIGNIFICANTLY DAMAGED FRIABLE SURFACING MATERIAL
- 4.) DAMAGED OR SIGNIFICANTLY DAMAGED FRIABLE MISCELLANEOUS MATERIAL.

- 5.) ACBM WITH POTENTIAL FOR DAMAGE.
- 6.) ACBM WITH POTENTIAL FOR SIGNIFICANT DAMAGE.
- 7.) ANY REMAINING FRIABLE ACBM OR FRIABLE SUSPECTED ACBM.

B.0 RESPONSE ACTIONS

RESPONSE ACTIONS HAVE BEEN DEVELOPED FOR ALL FRIABLE TSI AND FRIABLE ACBM'S PRESENT IN THE BUILDING. RESPONSE ACTIONS INCLUDE OPERATIONS AND MAINTENANCE, REPAIR, ENCAPSULATION, ENCLOSURE OR REMOVAL.

OPERATIONS AND MAINTENANCE IS A PROGRAM OF WORK PRACTICES DESIGNED TO MAINTAIN FRIABLE ACBM IN GOOD CONDITION AND TO ENSURE PROPER CLEANUP OF ASBESTOS FIBERS PREVIOUSLY RELEASED.

REPAIR INVOLVES RESTORATION OF THE ACBM TO AN UNDAMAGED (INTACT) STATE BY PATCHING OR REPLACING LOCALIZED SECTIONS OF ACBM.

ENCAPSULATION INVOLVES TREATMENT OF ACBM'S WITH A MATERIAL THAT SURROUNDS OR EMBEDS ASBESTOS FIBERS IN AN ADHESIVE MATRIX TO PREVENT THE RELEASE OF FIBERS. BRIDGING ENCAPSULANTS CREATE A MEMBRANE OVER THE SURFACE OF THE ACBM WHILE PENETRATING ENCAPSULANTS BIND COMPONENTS OF THE ACBM'S TOGETHER. BOTH ENCAPSULANT TYPES ARE APPLIED IN A MANNER SO AS NOT TO RELEASE ASBESTOS FIBERS BY VIRTUE OF THE ENCAPSULATION PROCESS.

ENCLOSURE INVOLVES CREATING AN AIR TIGHT, IMPERMEABLE, PERMANENT BARRIER AROUND ACBM TO PREVENT FIBER RELEASE. ENCLOSURE MUST BE MADE WITH A RIGID OR SEMI RIGID MATERIAL; E.G. PLYWOOD, CORRUGATED METAL, ETC.

REMOVAL INVOLVES STRIPPING ALL ACBM FROM THE DAMAGED AREA.

9.0 RECOMMENDATIONS

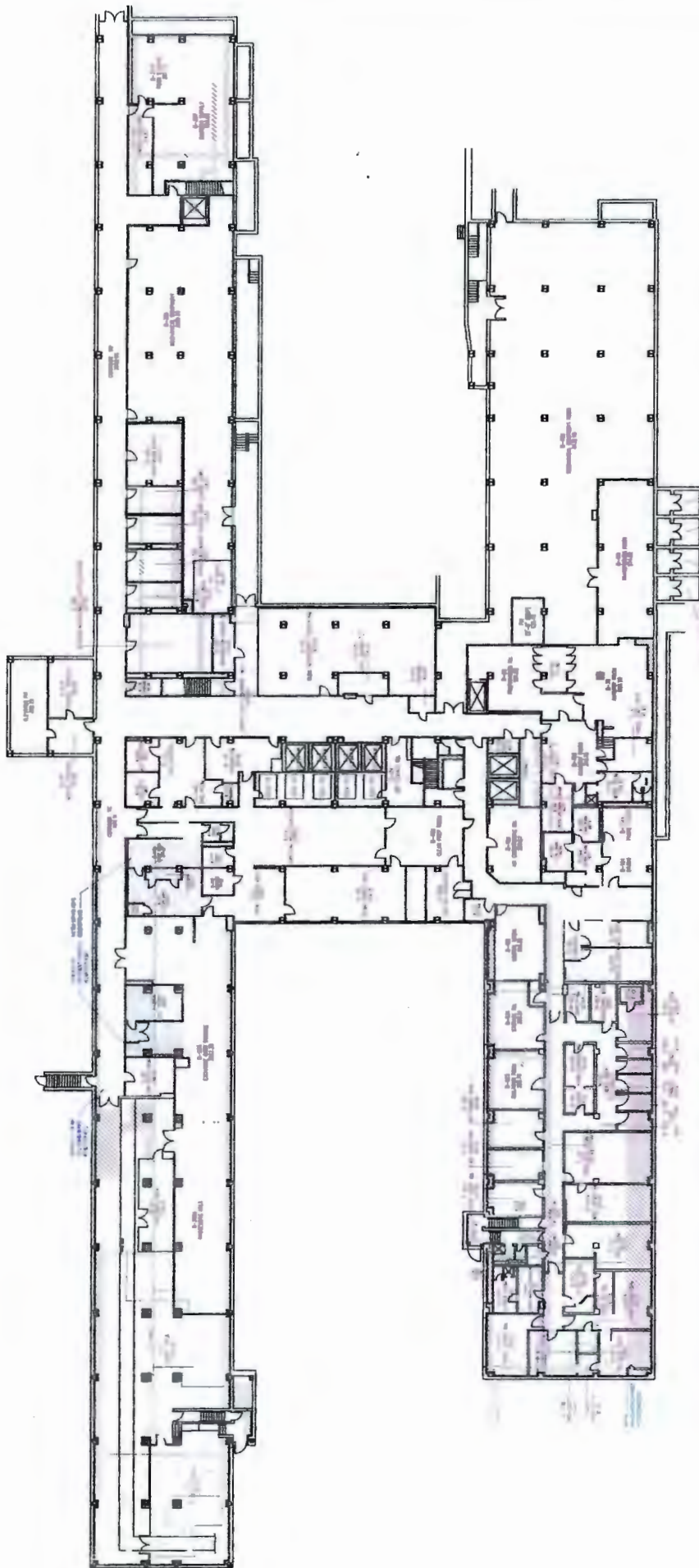
IT IS RECOMMENDED THAT ASBESTOS WARNING SIGNS BE PLACED AT ALL PIPE CHASES THROUGHOUT THE FACILITY. IF THIS IS NOT PRACTICAL IN SOME LOCATIONS, THE PIPES THEMSELVES MUST BE LABELED TO CONFORM WITH US OCCUPATIONAL SAFETY AND HEALTH ADMINISTRATION REQUIREMENTS 29 CFR 1926.1101, 1001 (CONSTRUCTION AND GENERAL INDUSTRY) STANDARDS.

IT IS RECOMMENDED THAT ALL CUSTODIAL AND MAINTENANCE STAFF UNDER-GO A MINIMUM 2 HOUR ASBESTOS AWARENESS COURSE THAT INFORMS EMPLOYEES OF LOCATIONS AND TYPES OF ASBESTOS THAT MAY BE ENCOUNTERED WITHIN THE FACILITY. SELECT MAINTENANCE PERSONNEL SHOULD RECEIVE FURTHER TRAINING TO ALLOW THEM TO CONDUCT SHORT SCALE SMALL DURATION ABATEMENT ACTIVITIES; E.G. GLOVE BAG REMOVALS FOR INCIDENTAL DISTURBANCE OR OTHER MINOR REPAIRS.

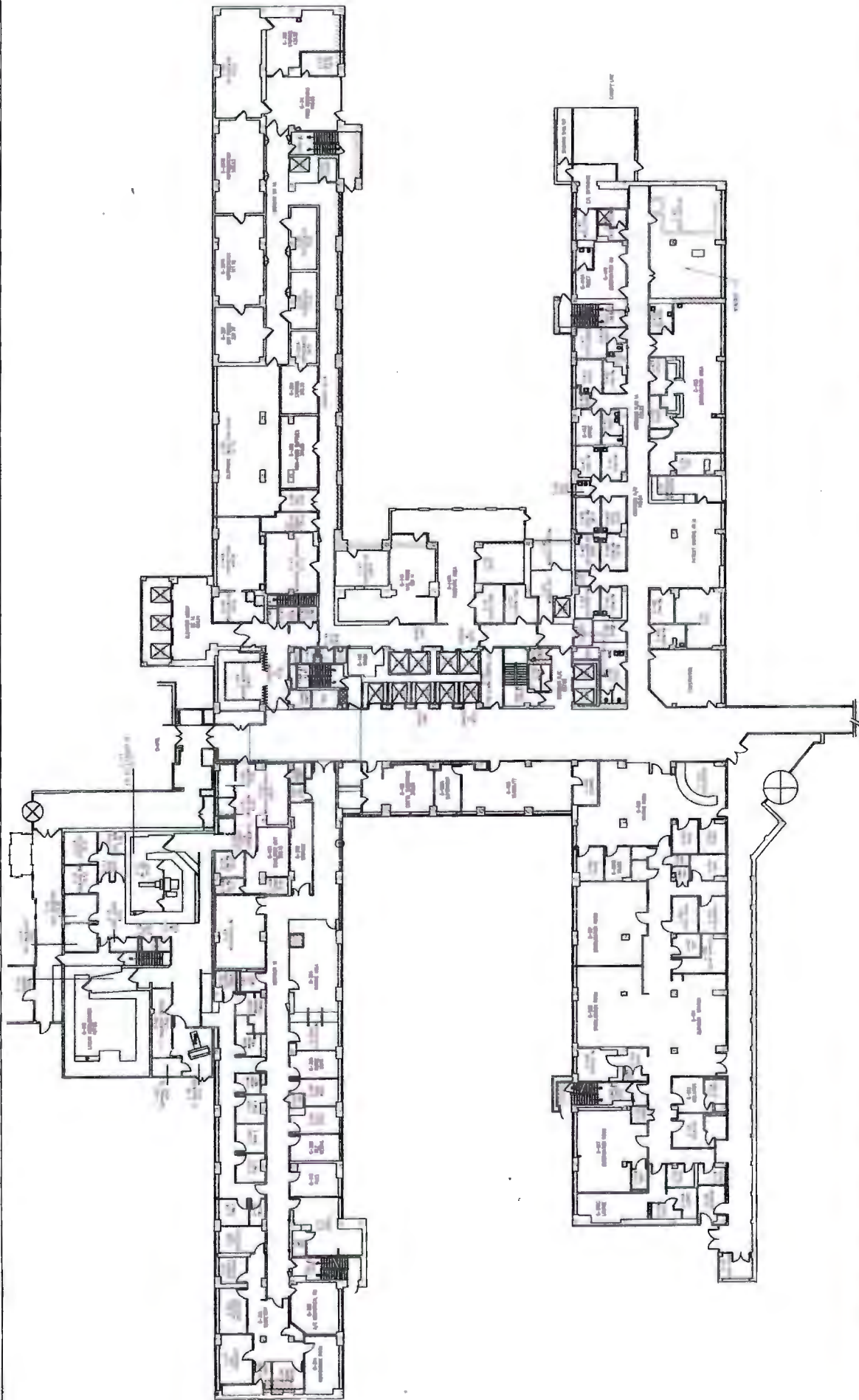
IT IS RECOMMENDED THAT ALL ACBM'S IDENTIFIED IN THIS REPORT BE SUBJECT TO ROUTINE VISUAL SURVEILLANCE AT SIX MONTH AND TRIENNIAL INTERVALS. SURVEILLANCE MUST BE CONDUCTED BY AN EPA/NYS CERTIFIED ASBESTOS INSPECTOR/MANAGEMENT PLANNER. THE FINDINGS OF THESE SURVEILLANCE INSPECTIONS MAY BE USED TO UPDATE ASBESTOS CONTAINING MATERIAL INVENTORIES.

APPENDIX A

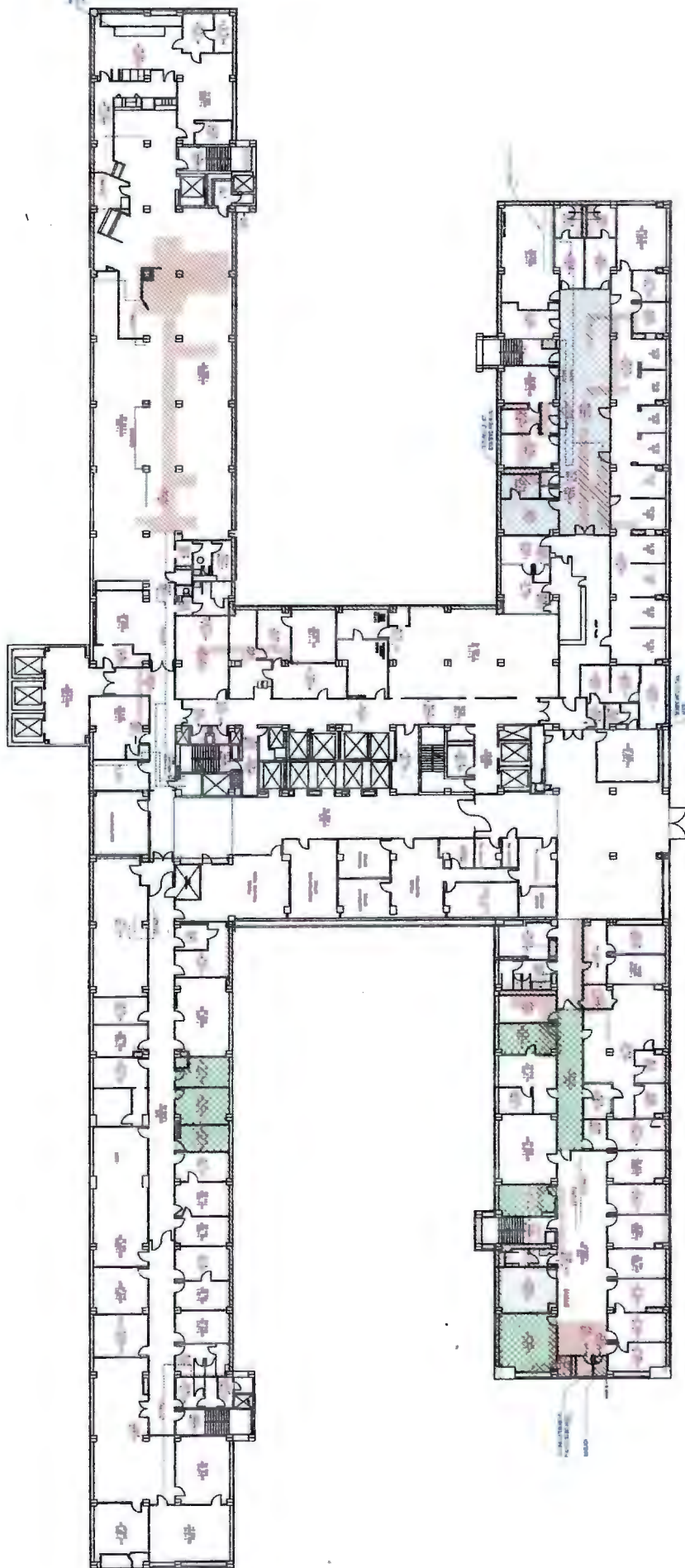
DRAWINGS



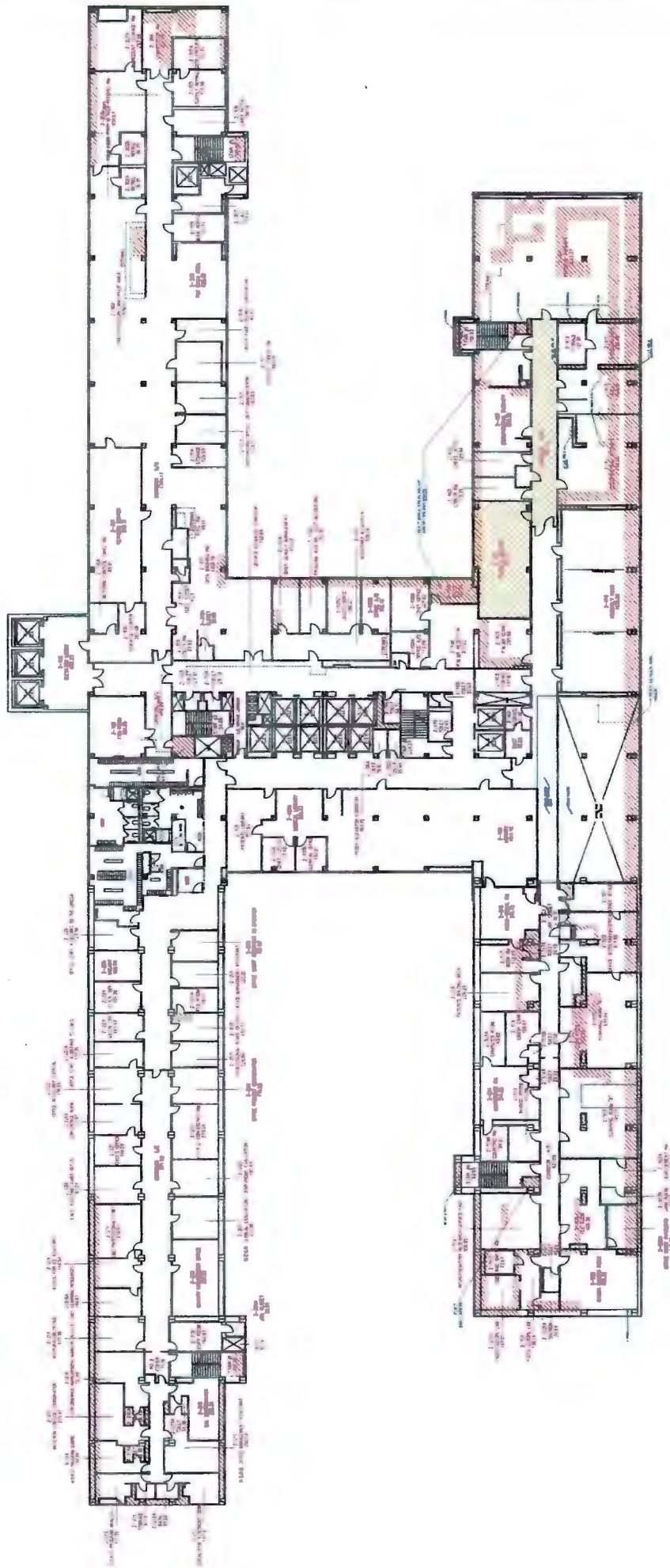
		Project Title ASBESTOS MATERIALS ASSESSMENT AND REMEDIATION NOTED SCALE: 1/8" = 1'-0" DATE: 10/1/98 BY: J.P. FOR: SSR		Date: 10-18-98 Project No.: B 18
Client Title Basement Floor Building 1 Brooklyn, N.Y.		Project Title ASBESTOS MATERIALS ASSESSMENT AND REMEDIATION NOTED SCALE: 1/8" = 1'-0" DATE: 10/1/98 BY: J.P. FOR: SSR		Date: 10-18-98 Project No.: B 18
				Date: 10-18-98 Project No.: B 18
		Project Title: ASBESTOS MATERIALS ASSESSMENT AND REMEDIATION NOTED Scale: 1/8" = 1'-0" Date: 10/1/98 By: J.P. For: SSR		Date: 10-18-98 Project No.: B 18
Legend:		Legend:		Legend:
<input type="checkbox"/> BLUE SHADING ASBESTOS REMEDIATION NOTED	<input type="checkbox"/> RED SHADING ASBESTOS REMEDIATION NOTED	<input type="checkbox"/> GREEN SHADING ASBESTOS REMEDIATION NOTED	<input type="checkbox"/> YELLOW SHADING ASBESTOS REMEDIATION NOTED	<input type="checkbox"/> PINK SHADING ASBESTOS REMEDIATION NOTED



		2ND FLOOR Building 1 Brooklyn, N.Y.		Project No. _____ Drawing No. _____ Date _____	
Project Title ASSESSING MATERIALS SCALE: AS NOTED		Building No. _____ Block No. _____ Section No. _____		Drawing No. 18 Date _____	
Project Location Building 1 Brooklyn, N.Y.		Project No. _____ Drawing No. _____ Date _____		Project Title ASSESSING MATERIALS SCALE: AS NOTED	
Project Location Building 1 Brooklyn, N.Y.		Project No. _____ Drawing No. _____ Date _____		Project Title ASSESSING MATERIALS SCALE: AS NOTED	



		Project No. 13-5-10 Drawing No. 118	
Project Title 1st Floor Building 1 Brooklyn, N.Y.		Assessment Title ASSESSMENT OF ASBESTOS MATERIALS SCALE: AS NOTED BLDG. 1	
		Project Manager [Signature] Date [Date]	
Project Location [Address]		Project Status [Status]	
Project Description [Description]		Project Notes [Notes]	
Project History [History]		Project Contacts [Contacts]	
Project Budget [Budget]		Project Schedule [Schedule]	
Project Risks [Risks]		Project Mitigation [Mitigation]	
Project Compliance [Compliance]		Project Reporting [Reporting]	
Project Approval [Approval]		Project Sign-off [Sign-off]	

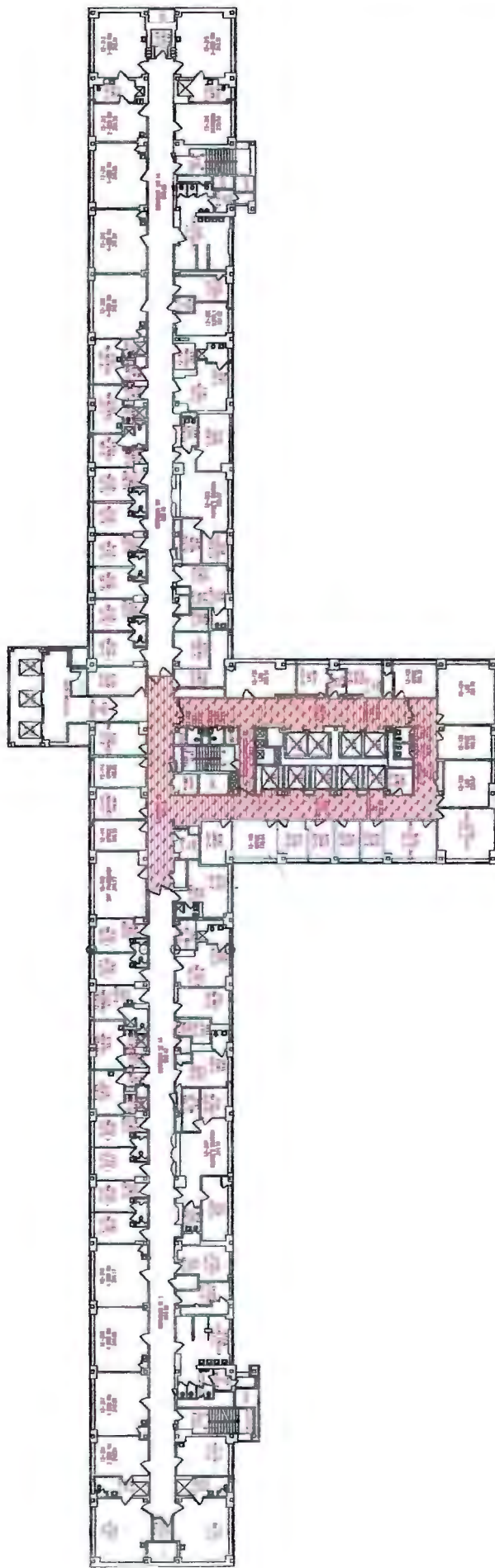


		2nd Floor Building 1 Brooklyn, N.Y.		ASSESSING MATERIALS ASSESSMENT SCALE: AS NOTED		2 18 2	
LEGEND		NOT TESTED FOR		NOT TESTED FOR		NOT TESTED FOR	
<input type="checkbox"/> NOT TESTED FOR FLOORING	<input type="checkbox"/> NOT TESTED FOR WALLS	<input type="checkbox"/> NOT TESTED FOR ROOFING	<input type="checkbox"/> NOT TESTED FOR MECHANICAL	<input type="checkbox"/> NOT TESTED FOR ELECTRICAL	<input type="checkbox"/> NOT TESTED FOR PLUMBING	<input type="checkbox"/> NOT TESTED FOR HVAC	<input type="checkbox"/> NOT TESTED FOR OTHER
<input type="checkbox"/> NOT TESTED FOR FLOORING	<input type="checkbox"/> NOT TESTED FOR WALLS	<input type="checkbox"/> NOT TESTED FOR ROOFING	<input type="checkbox"/> NOT TESTED FOR MECHANICAL	<input type="checkbox"/> NOT TESTED FOR ELECTRICAL	<input type="checkbox"/> NOT TESTED FOR PLUMBING	<input type="checkbox"/> NOT TESTED FOR HVAC	<input type="checkbox"/> NOT TESTED FOR OTHER
<input type="checkbox"/> NOT TESTED FOR FLOORING	<input type="checkbox"/> NOT TESTED FOR WALLS	<input type="checkbox"/> NOT TESTED FOR ROOFING	<input type="checkbox"/> NOT TESTED FOR MECHANICAL	<input type="checkbox"/> NOT TESTED FOR ELECTRICAL	<input type="checkbox"/> NOT TESTED FOR PLUMBING	<input type="checkbox"/> NOT TESTED FOR HVAC	<input type="checkbox"/> NOT TESTED FOR OTHER

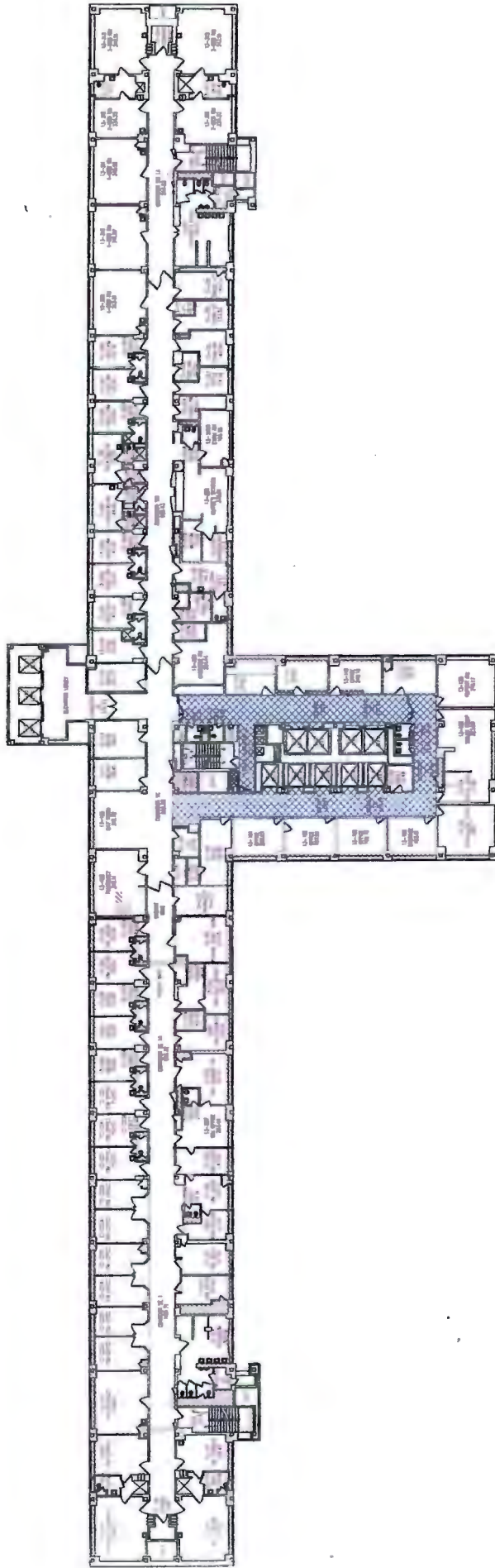




		Building 1 Brooklyn, N.Y.		ASSESSOR'S MATERIALS ASSESSMENT SCALE: AS NOTED		Date: 11/18/18 Page: 1 of 1	
Project No.: Building No.: Assessor's Name:		Building Type: Building Address: Assessor's License No.:		Building No.: Assessor's Name:		Date: 11/18/18 Page: 1 of 1	
Project No.: Building No.: Assessor's Name:		Building Type: Building Address: Assessor's License No.:		Building No.: Assessor's Name:		Date: 11/18/18 Page: 1 of 1	
Project No.: Building No.: Assessor's Name:		Building Type: Building Address: Assessor's License No.:		Building No.: Assessor's Name:		Date: 11/18/18 Page: 1 of 1	



1 2 3 4 5 6 7 8 9 10 11 12 13 14 15 16 17 18 19 20 21 22 23 24 25 26 27 28 29 30 31 32 33 34 35 36 37 38 39 40 41 42 43 44 45 46 47 48 49 50 51 52 53 54 55 56 57 58 59 60 61 62 63 64 65 66 67 68 69 70 71 72 73 74 75 76 77 78 79 80 81 82 83 84 85 86 87 88 89 90 91 92 93 94 95 96 97 98 99 100 101 102 103 104 105 106 107 108 109 110 111 112 113 114 115 116 117 118 119 120 121 122 123 124 125 126 127 128 129 130 131 132 133 134 135 136 137 138 139 140 141 142 143 144 145 146 147 148 149 150 151 152 153 154 155 156 157 158 159 160 161 162 163 164 165 166 167 168 169 170 171 172 173 174 175 176 177 178 179 180 181 182 183 184 185 186 187 188 189 190 191 192 193 194 195 196 197 198 199 200 201 202 203 204 205 206 207 208 209 210 211 212 213 214 215 216 217 218 219 220 221 222 223 224 225 226 227 228 229 230 231 232 233 234 235 236 237 238 239 240 241 242 243 244 245 246 247 248 249 250 251 252 253 254 255 256 257 258 259 260 261 262 263 264 265 266 267 268 269 270 271 272 273 274 275 276 277 278 279 280 281 282 283 284 285 286 287 288 289 290 291 292 293 294 295 296 297 298 299 300 301 302 303 304 305 306 307 308 309 310 311 312 313 314 315 316 317 318 319 320 321 322 323 324 325 326 327 328 329 330 331 332 333 334 335 336 337 338 339 340 341 342 343 344 345 346 347 348 349 350 351 352 353 354 355 356 357 358 359 360 361 362 363 364 365 366 367 368 369 370 371 372 373 374 375 376 377 378 379 380 381 382 383 384 385 386 387 388 389 390 391 392 393 394 395 396 397 398 399 400 401 402 403 404 405 406 407 408 409 410 411 412 413 414 415 416 417 418 419 420 421 422 423 424 425 426 427 428 429 430 431 432 433 434 435 436 437 438 439 440 441 442 443 444 445 446 447 448 449 450 451 452 453 454 455 456 457 458 459 460 461 462 463 464 465 466 467 468 469 470 471 472 473 474 475 476 477 478 479 480 481 482 483 484 485 486 487 488 489 490 491 492 493 494 495 496 497 498 499 500 501 502 503 504 505 506 507 508 509 510 511 512 513 514 515 516 517 518 519 520 521 522 523 524 525 526 527 528 529 530 531 532 533 534 535 536 537 538 539 540 541 542 543 544 545 546 547 548 549 550 551 552 553 554 555 556 557 558 559 560 561 562 563 564 565 566 567 568 569 570 571 572 573 574 575 576 577 578 579 580 581 582 583 584 585 586 587 588 589 590 591 592 593 594 595 596 597 598 599 600 601 602 603 604 605 606 607 608 609 610 611 612 613 614 615 616 617 618 619 620 621 622 623 624 625 626 627 628 629 630 631 632 633 634 635 636 637 638 639 640 641 642 643 644 645 646 647 648 649 650 651 652 653 654 655 656 657 658 659 660 661 662 663 664 665 666 667 668 669 670 671 672 673 674 675 676 677 678 679 680 681 682 683 684 685 686 687 688 689 690 691 692 693 694 695 696 697 698 699 700 701 702 703 704 705 706 707 708 709 710 711 712 713 714 715 716 717 718 719 720 721 722 723 724 725 726 727 728 729 730 731 732 733 734 735 736 737 738 739 740 741 742 743 744 745 746 747 748 749 750 751 752 753 754 755 756 757 758 759 760 761 762 763 764 765 766 767 768 769 770 771 772 773 774 775 776 777 778 779 780 781 782 783 784 785 786 787 788 789 790 791 792 793 794 795 796 797 798 799 800 801 802 803 804 805 806 807 808 809 810 811 812 813 814 815 816 817 818 819 820 821 822 823 824 825 826 827 828 829 830 831 832 833 834 835 836 837 83



		Project No. 10-00-10 Project Title: ASBESTOS MATERIALS SCALE: AS NOTED Drawing No. BLDG. 1 Location:		Date: 11-18-04 Drawn By:	
Building 1 Brooklyn, N.Y. Approved:		Checked:		Date:	
Legend:		Material:		Notes:	
<input type="checkbox"/> DIRT MILLION <input type="checkbox"/> ASPHALT <input type="checkbox"/> CONCRETE <input type="checkbox"/> GYPSUM BOARD <input type="checkbox"/> GYPSUM BOARD	<input type="checkbox"/> WHITE PLASTER <input type="checkbox"/> WHITE PLASTER <input type="checkbox"/> WHITE PLASTER <input type="checkbox"/> WHITE PLASTER <input type="checkbox"/> WHITE PLASTER	<input type="checkbox"/> WHITE PLASTER <input type="checkbox"/> WHITE PLASTER <input type="checkbox"/> WHITE PLASTER <input type="checkbox"/> WHITE PLASTER <input type="checkbox"/> WHITE PLASTER	<input type="checkbox"/> WHITE PLASTER <input type="checkbox"/> WHITE PLASTER <input type="checkbox"/> WHITE PLASTER <input type="checkbox"/> WHITE PLASTER <input type="checkbox"/> WHITE PLASTER	<input type="checkbox"/> WHITE PLASTER <input type="checkbox"/> WHITE PLASTER <input type="checkbox"/> WHITE PLASTER <input type="checkbox"/> WHITE PLASTER <input type="checkbox"/> WHITE PLASTER	<input type="checkbox"/> WHITE PLASTER <input type="checkbox"/> WHITE PLASTER <input type="checkbox"/> WHITE PLASTER <input type="checkbox"/> WHITE PLASTER <input type="checkbox"/> WHITE PLASTER

APPENDIX B

SUPPORTING ANALYTICAL DOCUMENTATION

**AmeriSci Richmond**

13635 GENITO ROAD
MIDLOTHIAN, VA 23112
TEL: (804) 763-1200 • FAX: (804) 763-1800

February 8, 2010

Insight Environmental
Attn: John Paciulli
74 East Main Street
Suite #1
Patchogue, NY 11772

RE: Insight Environmental
Job Number 110021140
P.O. #09-0230
09-0230; VAMC; 1700 Poly Place, Bay Ridge, NY

Dear John Paciulli:

Enclosed are the results of Asbestos Analysis - Bulk Protocol of the following Insight Environmental samples, received at AmeriSci on Friday, February 05, 2010, for a 24 hour turnaround:

1A, 1B, 2A, 2B, 3A, 3B, 4A, 4B, 5A, 5B, 6A, 6B, 7A, 7B, 8A, 8B, 9A, 9B, 10A, 10B, 11A, 11B, 12A, 12B, 13A, 13B

The 26 samples, placed in zip lock bag, were shipped to AmeriSci via Fed Ex 8687 9476 8794 B. Insight Environmental requested ELAP PLM/TEM analysis of these samples.

The results of the analyses which were performed under NYSDOH ELAP Lab Certification # 10984 following ELAP 198.4 TEM guidelines are presented within the Summary Table of this report. The presence of matrix reduction data in the Summary Table normally indicates an NOB sample. For NOB samples the individual matrix reduction and TEM analysis results are listed in Table I. Complete PLM results for individual samples analyzed by ELAP 198.1 (friable) and ELAP 198.6 (NOB) are presented in the PLM Bulk Asbestos Report. This combined report relates ONLY to sample analysis expressed as percent composition by weight and percent asbestos. This report must not be used to claim product endorsement or approval by these laboratories, NVLAP, ELAP or any other associated agency. The National Institute of Standards and Technology Accreditation requirements, mandates that this report must not be reproduced, except in full without the written approval of the laboratory. This report may contain specific data not covered by NVLAP or ELAP accreditations respectively, if so identified in relevant footnotes.

AmeriSci appreciates this opportunity to serve your organization. Please contact us for any further assistance or with any questions.

Sincerely,

T. Brian Keith
Asbestos Laboratory Director

PLM Bulk Asbestos Report

Insight Environmental
Attn: John Paciulli
74 East Main Street
Suite #1
Patchogue, NY 11772

Date Received 02/05/10 **AmeriSci Job #** 110021140
Date Examined 02/08/10 **P.O. #**
ELAP # 10984 **Page** 1 of 5
RE: 09-0230; VAMC; 1700 Poly Place, Bay Ridge, NY

Client No. / HGA	Lab No.	Asbestos Present	Total % Asbestos
1A 1	110021140-01 Location: Hall By 15-107; 1x1 White FT w/Green Streaks	Yes	4.2 % (by NYS ELAP 198.6) by J. Samuel Baird on 02/08/10
Analyst Description: White, Heterogeneous, Non-Fibrous, Bulk Material Asbestos Types: Chrysotile 4.1 % Other Material: Non-fibrous 55 %			
1B 1	110021140-02 Location: Hall By 10-210; 1x1 White FT w/Green Streaks		NA/PS
Analyst Description: Bulk Material Asbestos Types: Other Material:			
2A 2	110021140-03 Location: Room 15-208; 1x1 White FT w/Lt Blue Streaks	Yes	3.9 % (by NYS ELAP 198.6) by J. Samuel Baird on 02/08/10
Analyst Description: White, Heterogeneous, Non-Fibrous, Bulk Material Asbestos Types: Chrysotile 3.9 % Other Material: Non-fibrous 50.1 %			
2B 2	110021140-04 Location: Hall @ Freight Elevator 15th Floor; 1x1 White FT w/Lt Blue Streaks		NA/PS
Analyst Description: Bulk Material Asbestos Types: Other Material:			
3A 3	110021140-05 Location: Room 16-125; 1x1 Cream FT w/Gold & Brown Streaks	Yes	4.1 % (by NYS ELAP 198.6) by J. Samuel Baird on 02/08/10
Analyst Description: Cream, Heterogeneous, Non-Fibrous, Bulk Material Asbestos Types: Chrysotile 4.1 % Other Material: Non-fibrous 50 %			

Client Name: Insight Environmental

PLM Bulk Asbestos Report

09-0230; VAMC; 1700 Poly Place, Bay Ridge, NY

Client No. / HGA	Lab No.	Asbestos Present	Total % Asbestos
3B 3	110021140-06 Location: Hall By 3-107; 1x1 Cream FT w/Gold & Brown Streaks		NA/PS
Analyst Description: Bulk Material Asbestos Types: Other Material:			
4A 4	110021140-07 Location: Room 3-301; 1x1 White w/Black Streaks	Yes	4.5 % (by NYS ELAP 198.6) by J. Samuel Baird on 02/08/10
Analyst Description: White, Heterogeneous, Non-Fibrous, Bulk Material Asbestos Types: Chrysotile 4.5 % Other Material: Non-fibrous 54.3 %			
4B 4	110021140-08L1 Location: Room 3-301; 1x1 White w/Black Streaks		NA/PS
Analyst Description: Bulk Material Asbestos Types: Other Material:			
4B 4	110021140-08L2 Location: Room 3-301; 1x1 White w/Black Streaks	Yes	2.8 % (by NYS ELAP 198.6) by J. Samuel Baird on 02/08/10
Analyst Description: Black, Heterogeneous, Non-Fibrous, Bulk Material Asbestos Types: Chrysotile 2.8 % Other Material: Non-fibrous 13.8 %			
5A 5	110021140-09 Location: Vestibule 14-316; 1x1 Rust Mottle Tile	Yes	Trace (<1 %) (by NYS ELAP 198.6) by J. Samuel Baird on 02/08/10
Analyst Description: Brown, Heterogeneous, Non-Fibrous, Bulk Material Asbestos Types: Chrysotile <1 % pc Other Material: Non-fibrous 30.4 %			
5B 5	110021140-10 Location: Stair 3, Level 3; 1x1 Rust Mottle Tile	No	NAD (by NYS ELAP 198.6) by J. Samuel Baird on 02/08/10
Analyst Description: Brown, Heterogeneous, Non-Fibrous, Bulk Material Asbestos Types: Other Material: Non-fibrous 26 %			

PLM Bulk Asbestos Report

09-0230; VAMC; 1700 Poly Place, Bay Ridge, NY

Client No. / HGA	Lab No.	Asbestos Present	Total % Asbestos
9A 9	110021140-17 Location: Room 3-407; 1x1 Cream FT w/Olive Streaks	Yes	1.2 % (by NYS ELAP 198.6) by Gordon T. Saleeby on 02/08/10
Analyst Description: Cream, Heterogeneous, Non-Fibrous, Bulk Material Asbestos Types: Chrysotile 1.2 % Other Material: Non-fibrous 18.5 %			
9B 9	110021140-18 Location: Room 3-407; 1x1 Cream FT w/Olive Streaks		NA/PS
Analyst Description: Bulk Material Asbestos Types: Other Material:			
10A 10	110021140-19 Location: Hall By 2-108; 1x1 Pebble Style FT	Yes	2.4 % (by NYS ELAP 198.6) by Gordon T. Saleeby on 02/08/10
Analyst Description: Off White, Heterogeneous, Non-Fibrous, Bulk Material Asbestos Types: Chrysotile 2.4 % Other Material: Non-fibrous 46.7 %			
10B 10	110021140-20 Location: Hall By 2-108; 1x1 Pebble Style FT		NA/PS
Analyst Description: Bulk Material Asbestos Types: Other Material:			
11A 11	110021140-21 Location: Room 3-301; 1x1 Pitted Green Mottled Tile	Yes	2.2 % (by NYS ELAP 198.6) by Gordon T. Saleeby on 02/08/10
Analyst Description: White, Heterogeneous, Non-Fibrous, Bulk Material Asbestos Types: Chrysotile 2.2 % Other Material: Non-fibrous 45.4 %			
11B 11	110021140-22 Location: Room 3-301; 1x1 Pitted Green Mottled Tile		NA/PS
Analyst Description: Bulk Material Asbestos Types: Other Material:			

PLM Bulk Asbestos Report

09-0230; VAMC; 1700 Poly Place, Bay Ridge, NY

Client No. / HGA	Lab No.	Asbestos Present	Total % Asbestos
6A 6	110021140-11 Location: Stair 3, Level 6; 1x1 Chocolate Brown FT	No	NAD (by NYS ELAP 198.6) by J. Samuel Baird on 02/08/10
Analyst Description: Brown, Heterogeneous, Non-Fibrous, Bulk Material Asbestos Types: Other Material: Non-fibrous 36 %			
6B 6	110021140-12 Location: Hallway, 1st Floor (Core); 1x1 Chocolate Brown FT	No	NAD (by NYS ELAP 198.6) by Gordon T. Saleeby on 02/08/10
Analyst Description: Brown, Heterogeneous, Non-Fibrous, Bulk Material Asbestos Types: Other Material: Non-fibrous 39.1 %			
7A 7	110021140-13 Location: Room 13-109; 1x1 White FT w/Black & Gry Streaks	No	NAD (by NYS ELAP 198.6) by Gordon T. Saleeby on 02/08/10
Analyst Description: White, Heterogeneous, Non-Fibrous, Bulk Material Asbestos Types: Other Material: Non-fibrous 25.4 %			
7B 7	110021140-14 Location: Room 13-109; 1x1 White FT w/Black & Gry Streaks	No	NAD (by NYS ELAP 198.6) by Gordon T. Saleeby on 02/08/10
Analyst Description: White, Heterogeneous, Non-Fibrous, Bulk Material Asbestos Types: Other Material: Non-fibrous 19.8 %			
8A 8	110021140-15 Location: Room 3-406; 1x1 Blue Mottle FT	Yes	1.9 % (by NYS ELAP 198.6) by Gordon T. Saleeby on 02/08/10
Analyst Description: Off White, Heterogeneous, Non-Fibrous, Bulk Material Asbestos Types: Chrysotile 1.9 % Other Material: Non-fibrous 56.3 %			
8B 8	110021140-16 Location: Room 3-406; 1x1 Blue Mottle FT		NA/PS
Analyst Description: Bulk Material Asbestos Types: Other Material:			

Client Name: Insight Environmental

PLM Bulk Asbestos Report

09-0230; VAMC; 1700 Poly Place, Bay Ridge, NY

Client No. / HGA	Lab No.	Asbestos Present	Total % Asbestos
12A 12	110021140-23 Location: Audiology 15-106; Brown Mastic Behind Acoustic Tile	Yes	Trace (<0.25 % pc) (ELAP 198.6; 400pc) by Gordon T. Saleeby on 02/08/10
Analyst Description: Brown, Heterogeneous, Non-Fibrous, Bulk Material Asbestos Types: Chrysotile <0.25 % pc Other Material: Non-fibrous 48.5 %			
12B 12	110021140-24 Location: Audiology 15-106; Brown Mastic Behind Acoustic Tile	Yes	Trace (<0.25 % pc) (ELAP 198.6; 400pc) by Gordon T. Saleeby on 02/08/10
Analyst Description: Brown, Heterogeneous, Non-Fibrous, Bulk Material Asbestos Types: Chrysotile <0.25 % pc Other Material: Non-fibrous 47.8 %			
13A 13	110021140-25 Location: Audiology 15-106; Acoustic 1x1 Tile	No	NAD (by NYS ELAP 198.1) by David W. Ralbovsky on 02/08/10
Analyst Description: White/Lt.Grey, Heterogeneous, Fibrous, Bulk Material Asbestos Types: Other Material: Fibrous glass 88 %, Non-fibrous 12 %			
13B 13	110021140-26 Location: Audiology 15-106; Acoustic 1x1 Tile	No	NAD (by NYS ELAP 198.1) by David W. Ralbovsky on 02/08/10
Analyst Description: White/Lt.Grey, Heterogeneous, Fibrous, Bulk Material Asbestos Types: Other Material: Fibrous glass 88 %, Non-fibrous 12 %			

Reporting Notes:

Analyzed by: J. Samuel Baird

Date

2/8/10

*NAD = no asbestos detected, Detection Limit <1%, Reporting Limits: CVES = 1%, 400 ft Ct = 0.25%, 1000 Pt Ct = 0.1%; "Present" or NVA = "No Visible Asbestos" are observations made during a qualitative analysis; NA = not analyzed; NA/PS = not analyzed / positive stop; PLM Bulk Asbestos Analysis by EPA 600/M4-82-020 per 40 CFR 763 (NVLAP Lab Code 101904-0) and ELAP PLM Analysis Protocol 198.1 for New York friable samples (198.6 for NOB samples)(NYS DOH ELAP Lab # 10984); CA ELAP Lab # 2508; Note: PLM is not consistently reliable in detecting asbestos in floor coverings and similar NOB materials. NAD or Trace results by PLM are inconclusive, TEM is currently the only method that can be used to determine if this material can be considered or treated as non-asbestos-containing in New York State (also see EPA Advisory for floor tile, FR 59, 146, 38970, 8/1/94). NIST Accreditation requirements mandate that this report must not be reproduced except in full without the approval of the laboratory. This PLM report relates ONLY to the items tested.

Reviewed By:

Table I
Summary of Bulk Asbestos Analysis Results
 09-0230; VAMC; 1700 Poly Place, Bay Ridge, NY

AmeriSci Sample #	Client Sample#	HG Area	Sample Weight (gram)	Heat Sensitive Organic %	Acid Soluble Inorganic %	Insoluble Non-Asbestos Inorganic %	** Asbestos % by PLM/DS	** Asbestos % by TEM
01	1A	1	1.033	27.6	13.2	55.0	Chrysotile 4.1	NA
Location:	Hall By 15-107; 1x1 White FT w/Green Streaks							
02	1B	1	0.879	27.7	14.1	58.2	NA/PS	NA
Location:	Hall By 10-210; 1x1 White FT w/Green Streaks							
03	2A	2	0.490	26.2	19.8	50.1	Chrysotile 3.9	NA
Location:	Room 15-208; 1x1 White FT w/Lt Blue Streaks							
04	2B	2	0.699	27.3	13.1	59.5	NA/PS	NA
Location:	Hall @ Freight Elevator 15th Floor; 1x1 White FT w/Lt Blue Streaks							
05	3A	3	0.448	28.7	17.2	50.0	Chrysotile 4.1	NA
Location:	Room 16-125; 1x1 Cream FT w/Gold & Brown Streaks							
06	3B	3	0.424	28.8	11.2	60.0	NA/PS	NA
Location:	Hall By 3-107; 1x1 Cream FT w/Gold & Brown Streaks							
07	4A	4	0.332	27.1	14.1	54.3	Chrysotile 4.5	NA
Location:	Room 3-301; 1x1 White w/Black Streaks							
08L1	4B	4	0.188	28.7	19.4	51.9	NA/PS	NA
Location:	Room 3-301; 1x1 White w/Black Streaks							
08L2	4B	4	0.134	70.8	12.6	13.8	Chrysotile 2.8	NA
Location:	Room 3-301; 1x1 White w/Black Streaks							
09	5A	5	0.887	26.6	42.6	27.8	Chrysotile <1	Chrysotile 3.0
Location:	Vestibule 14-316; 1x1 Rust Mottle Tile							
10	5B	5	0.793	27.7	46.2	26.0	NAD	NA/PS
Location:	Stair 3, Level 3; 1x1 Rust Mottle Tile							
11	6A	6	0.774	24.7	39.3	34.0	NAD	Chrysotile 2.0
Location:	Stair 3, Level 6; 1x1 Chocolate Brown FT							
12	6B	6	0.791	24.4	36.4	39.1	NAD	NA/PS
Location:	Hallway, 1st Floor (Core); 1x1 Chocolate Brown FT							
13	7A	7	0.423	26.7	48.0	23.4	NAD	Chrysotile 2.0
Location:	Room 13-109; 1x1 White FT w/Black & Gry Streaks							
14	7B	7	0.353	27.2	53.0	19.8	NAD	NA/PS
Location:	Room 13-109; 1x1 White FT w/Black & Gry Streaks							
15	8A	8	0.827	26.5	15.3	56.3	Chrysotile 1.9	NA
Location:	Room 3-406; 1x1 Blue Mottle FT							

See Reporting notes on last page

Table I
Summary of Bulk Asbestos Analysis Results
 09-0230; VAMC; 1700 Poly Place, Bay Ridge, NY

AmeriSci Sample #	Client Sample#	HG Area	Sample Weight (gram)	Heat Sensitive Organic %	Acid Soluble Inorganic %	Insoluble Non-Asbestos Inorganic %	** Asbestos % by PLM/DS	** Asbestos % by TEM
16	8B	8	0.723	26.6	17.0	56.4	NA/PS	NA
Location:	Room 3-406; 1x1 Blue Mottle FT							
17	9A	9	0.538	25.6	54.7	18.5	Chrysotile 1.2	NA
Location:	Room 3-407; 1x1 Cream FT w/Olive Streaks							
18	9B	9	0.249	26.2	43.9	29.9	NA/PS	NA
Location:	Room 3-407; 1x1 Cream FT w/Olive Streaks							
19	10A	10	0.512	36.3	14.6	46.7	Chrysotile 2.4	NA
Location:	Hall By 2-108; 1x1 Pebble Style FT							
20	10B	10	0.624	34.8	30.0	35.2	NA/PS	NA
Location:	Hall By 2-108; 1x1 Pebble Style FT							
21	11A	11	0.877	26.5	26.0	45.4	Chrysotile 2.2	NA
Location:	Room 3-301; 1x1 Pitted Green Mottled Tile							
22	11B	11	0.357	27.8	35.7	36.5	NA/PS	NA
Location:	Room 3-301; 1x1 Pitted Green Mottled Tile							
23	12A	12	0.667	51.0	0.6	48.4	Chrysotile <0.25	Chrysotile Trace
Location:	Audiology 15-106; Brown Mastic Behind Acoustic Tile							
24	12B	12	0.680	50.1	2.1	47.7	Chrysotile <0.25	Chrysotile Trace
Location:	Audiology 15-106; Brown Mastic Behind Acoustic Tile							
25	13A	13	---	---	---	---	NAD	NA
Location:	Audiology 15-106; Acoustic 1x1 Tile							
26	13B	13	---	---	---	---	NAD	NA
Location:	Audiology 15-106; Acoustic 1x1 Tile							

Reviewed by: [Signature] Date Reviewed: 2/10/10 Analyzed By: T. Brian Keith [Signature] Date Analyzed: 2/8/2010

Semi-Quantitative Analysis: NAD = no asbestos detected; NA = not analyzed; NA/PS = not analyzed due to positive stop; Trace = <1%; PLM analysis by EPA 600/M4-82-020 per 40 CFR 763 (NVLAP Lab Code 101904-0) or NY ELAP 198.1 for New York friable samples (198.6 for NOB samples) (NY ELAP Lab # 10984); TEM analysis by EPA 600/R-93/116 (not covered by NVLAP Bulk accreditation); or NY ELAP 198.4 for New York NOB samples (NY ELAP Lab # 10984);

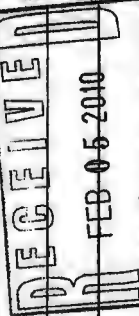
** Warning Notes: Consider PLM fiber diameter limitation, only TEM will resolve fibers <0.25 micrometers in diameter. TEM bulk analysis is representative of the fine grained matrix material and may not be representative of non-uniformly dispersed debris, soils or other heterogeneous materials for which a combination PLM/TEM evaluation is recommended; Quantitation for beginning weights of <0.1 grams should be considered as qualitative only.

Relinquished By: JOHN PACIULLI

Received By:

Relinquished By:

Received By:



FEB 05 2010

Company: INSIGHT ENVIRONMENTAL, INC.

Street Address: 74 E. MAIN ST.

City: PATAUGUE State: NY Zip: 11772

Phone: 631-654-2780 Fax: 631-654-2781

Cell: Fax:

Verbal Results: Y / N

Results to:

Special Instructions or Comments:

STOP @ 1ST POS PER HOMO. AREA

BULK CHAIN OF CUSTODY

AMERISCI RICHMOND
13635 GEMATO ROAD
MELOTHAM, VA 23112
TOLL FREE (800) 476-5227
PHONE (804) 763-1200
FAX (804) 763-1800

AMERISCI

WWW.AMERISCI.COM

Project: VAMC

Proj Mgr: JOHN PACIULLI

Proj #: 09-0230

Proj Address: 1700 POLY PLAZA, BAY RIDGE NY

Proj State: NY

Analysis: PLM; Positive Stop: TEM; ANY ELAP PLM/TEM w/ NOB Prep.

ASTM Dust (Microvac) (Wipe); Qualitative; Other (describe in comments)

Turnaround Time: 24 HR Material Type: X Bulk Dust Water

Sampled By: JOHN J. PACIULLI Date Sampled: 1/29/10

Lab ID	Field ID	Location	Sample Description (dust area)	Homogenous Area
1A		HALL BY. 15.107	1x1 WHITE F.T. W/ GREEN STREAKS	1
1B		HALL BY. 10.210	" " " " "	
2A		ROOM. 15.208	1x1 WHITE F.T. W/ LT. BLUE STREAKS	2
2B		HALL & FREIGHT ELEVATOR 15th Floor	" " " " "	
3A		Room. 16.125	1x1 CREAM F.T. W/ GOLD & BROWN STREAKS	3
3B		HALL BY. 3.107	" " " " "	
4A		Room. 3.301	1x1 WHITE W/ BLACK STREAKS	4
4B		Room. 3.301	" " " " "	
5A		VESTIBULE 14316	1x1 RUST MOTTLE TILE	5
5B		STAIR 3, LEVEL 3	" " " " "	
6A		STAIR 3, LEVEL 6	1x1 CHOCOLATE BROWN F.T.	6
6B		HALLWAY, 1ST FLOOR (CORE)	" " " " "	
7A		Room. 13.109	1x1 WHITE F.T. W/ BLACK & GRAY STREAKS	7
7B		Room. 13.109	" " " " "	
8A		Room. 3.406	1x1 BLUE MOTTLE F.T.	8
8B		Room. 3.406A	" " " " "	

RECEIVED
FEB 05 2010

Relinquished By: _____
Received By: _____
Relinquished By: _____
Received By: _____

Date/Time: _____
Date/Time: _____
Date/Time: _____
Date/Time: _____



BULK CHAIN OF CUSTODY
AMERISCI Richmond
13635 Gessito Road
Midlothian, VA 23112
Toll Free: (800) 476-5227
Phone: (804) 763-1200
Fax: (804) 763-1800
www.ameriscil.com

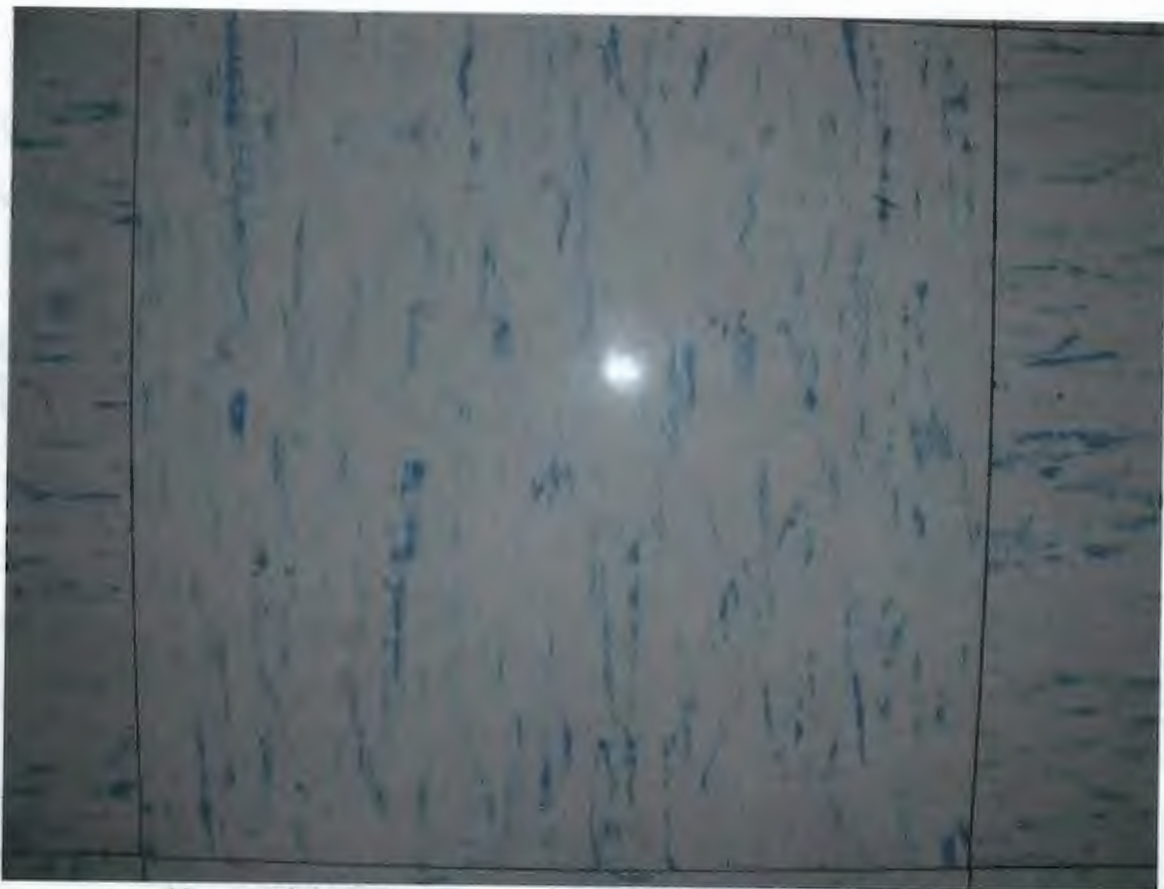
Company: _____
Street Address: _____
City: _____ State: _____ Zip: _____
Phone: _____ Fax: _____
Cell: _____ Fax: _____
E-mail: _____
Verbal Results: Y / N _____
Results to: _____
Special Instructions or Comments: _____

Project: _____
Proj Mgr: _____
Proj Address: _____
Analysis: ☒ PLM; ☐ Positive Stop; ☐ TEM; ☒ NY ELAP PLM/TEM w/ NOB Prep.
ASTM Dust (Microvac) (Wipe): _____ Qualitative: _____ Other (describe in comments) _____
Turnaround Time: _____
Material Type: _____ Bulk _____ Dust _____ Water _____
Sampled By: _____
Date Sampled: _____

Lab ID	Field ID	Location	Sample Description (dust area)	Homogenous Area
9A	9A	TH Room 3.407	1x1 CREAM F.I. w/ OLIVE STREAKS	9
9B	9B	Room 3.407	" " " " " "	
10A	10A	HALL BT 2.108	1x1 PEBBLE STYLE F.I.	10
10B	10B	HALL BT 2.108	" " " " " "	
11A	11A	Room - 3.301	1x1 PIMED GREEN MOTTLED TILE	11
11B	11B	Room - 3.301	" " " " " "	
12A	12A	AudioLOGY 15.106	BROWN MASTIC BEHIND ACOUSTIC TILE	12
12B	12B	AudioLOGY 15.106	" " " " " "	
13A	13A	AudioLOGY 15.106	Acoustic 1x1 TILE	13
13B	13B	" " 15.106	" " " " " "	

APPENDIX C

PHOTOGRAPHIC RECORD



12 x 12 Light Grey Floor Tile with Light Blue Streaks (positive)



12 x 12 Rust Multi Mottle Tile (negative)



12 x 12 Tile with Brown and Gold Streaks (positive)



12 x 12 Tile with Green Streaks (positive)



12 x 12 Blue Mottled Tile (positive)



12 x 12 Cream Floor Tile with Olive Streaks (positive)



12 x 12 Pebble Style Floor Tile (negative)



1 x 1 Acoustic Tile (negative)



Air cell debris above pipes in basement hall



Improperly tied in pipe run in core pipe chase



Residual asbestos joint packing on elbow



Asbestos containing seam patching on cork ductwork

APPENDIX D

PERSONNEL AND FIRM CERTIFICATIONS

STATE OF NEW YORK - DEPARTMENT OF LABOR
ASBESTOS CERTIFICATE



JOHN A. PACILLI
CLASS (EXPIRES)
CATEC (10/09) D. INSP (10/09)
E. MGR (10/09) H. PM (10/09)
IED (10/09)

CERT# 93-19180
DMV# 225684839

MUST BE CARRIED ON ASBESTOS PROJECTS



EYES HAZ
HAIR BRO
HGT 5' 11"

IF FOUND RETURN TO:
NYS DOL - L&C UNIT
ROOM 161A BUILDING 12
STATE OFFICE CAMPUS
ALBANY NY 12240

NEW YORK STATE DEPARTMENT OF LABOR
DIVISION OF SAFETY AND HEALTH
LICENSE AND CERTIFICATE UNIT
STATE CAMPUS BUILDING 12
ALBANY, NY 12240

ASBESTOS HANDLING LICENSE

Insight Environmental, Inc.
Suite 1
74 East Main Street
Patchogue, NY 11772

FILE NUMBER: 0210279
LICENSE NUMBER: 28434
LICENSE CLASS: RESTRICTED
DATE OF ISSUE: 03/25/2009
EXPIRATION DATE: 04/30/2010

Duly Authorized Representative: John J. Ragusa

This license has been issued in accordance with applicable provisions of Article 16 of the Labor Law of New York State and of the New York State Codes, Rules and Regulations, 12 NYCRR Part 59. It is subject to suspension or revocation for a (1) serious violation of state, federal or local laws with regard to the conduct of an asbestos project, or (2) demonstrated lack of responsibility in the conduct of any job involving asbestos or asbestos material.

This license is valid only for the contractor named above and this license or a photocopy must be prominently displayed at the asbestos project website. This license verifies that all persons employed by the licensee on an asbestos project in New York State have been issued an Asbestos Certificate, appropriate for the type of work they perform, by the New York State Department of Labor.

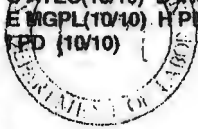
Maureen A. Cox
Maureen A. Cox, Director
FOR THE COMMISSIONER OF LABOR

STATE OF NEW YORK - DEPARTMENT OF LABOR

ASBESTOS CERTIFICATE



JOHN T. PACULLI
CLASS (EXPIRES)
CATEC (10/10) C INSP (10/10)
E MGPL (10/10) H PM (10/10)
EPD (10/10)



CERT# 93-19180

DMV# 229664939

MUST BE CARRIED ON ASBESTOS PROJECTS



EYES HAZ
HAIR BRO
HGT 5' 11"

IF FOUND RETURN TO:
NYSDEL - L&C UNIT
ROOM 161A BUILDING 12
STATE OFFICE CAMPUS
ALBANY NY 12240

NEW YORK STATE DEPARTMENT OF LABOR
DIVISION OF SAFETY AND HEALTH
LICENSE AND CERTIFICATE UNIT
STATE CAMPUS BUILDING 12
ALBANY, NY 12240

ASBESTOS HANDLING LICENSE

Insight Environmental, Inc.
Suite 1
74 East Main Street
Patchogue, NY 11772

FILE NUMBER: 02-0279
LICENSE NUMBER: 88434
LICENSE CLASS: RESTRICTED
DATE OF ISSUE: 03/10/2010
EXPIRATION DATE: 04/30/2011

Duly Authorized Representative: John J. Pasiulli

This license has been issued in accordance with applicable provisions of Article 16 of the Labor Law of New York State and of the New York State Codes, Rules and Regulations (12 NYCRR Part 56). It is subject to suspension or revocation for a (1) serious violation of state, federal or local laws with regard to the conduct of an asbestos project, or (2) demonstrated lack of responsibility in the conduct of any work involving asbestos or asbestos material.

This license is valid only for the contractor named above and this license or a photocopy must be prominently displayed at the asbestos project work site. This license verifies that all persons employed by the licensee on an asbestos project in New York State have been issued an Asbestos Certificate, appropriate for the type of work they perform, by the New York State Department of Labor.

Maureen A. Cox

Maureen A. Cox, Director
FOR THE COMMISSIONER OF LABOR

APPENDIX E

GLOSSARY

DESIGNATED PERSON (DP) - ANY PERSON DESIGNATED BY THE LOCAL EDUCATION AGENCY (LEA), WHO IS PROPERLY TRAINED TO DIRECT AND OVERSEE ASBESTOS-RELATED ACTIVITIES AND ENSURE COMPLIANCE WITH CURRENT LAWS AND REGULATIONS.

ENCAPSULATION - THE TREATMENT OF ACBM WITH MATERIAL THAT SURROUNDS OR EMBEDS ASBESTOS FIBERS IN AN ADHESIVE MATRIX TO PREVENT THE RELEASE OF FIBERS, AS THE ENCAPSULANT CREATES A MEMBRANE OVER THE SURFACE (BRIDGING ENCAPSULANT) OR PENETRATES THE MATERIAL AND BINDS ITS COMPONENTS TOGETHER (PENETRATING ENCAPSULANT).

ENCLOSURE - AN AIRTIGHT, IMPERMEABLE, PERMANENT BARRIER AROUND ACBM TO PREVENT THE RELEASE OF ASBESTOS FIBERS INTO THE AIR.

EXPOSURE - THE AMOUNT OF CONTACT AN INDIVIDUAL HAS WITH ASBESTOS FIBERS. EVALUATION OF EXPOSURE SHOULD TAKE INTO ACCOUNT THE FACTORS OF LOCATION OF THE ASBESTOS CONTAINING BUILDING MATERIAL (ACBM), POTENTIAL DURATION OF EXPOSURE, AND POTENTIAL EXPOSURE POPULATIONS WITHIN THE SCHOOL. FOR EXAMPLE, INTACT BOILER INSULATION IN A BOILER ROOM ACCESSED BY MAINTENANCE OR CUSTODIAL PERSONNEL ONCE PER WEEK WOULD LIKELY BE GIVEN A RELATIVELY LOW EXPOSURE RATING (I.E., 1).

FRIABLE - WHEN REFERRING TO MATERIAL IN A SCHOOL BUILDING MEANS THAT THE MATERIAL, WHEN DRY, MAY BE CRUMBLED, PULVERIZED, OR REDUCED TO POWDER BY HAND PRESSURE AND INCLUDES PREVIOUSLY NON-FRIABLE MATERIAL WHICH BECOMES DAMAGED TO THE EXTENT THAT WHEN DRY IT MAY BE CRUMBLED, PULVERIZED, OR REDUCED TO POWDER BY HAND PRESSURE.

FUNCTIONAL SPACE - MEANS A ROOM, GROUP OF ROOMS, OR HOMOGENEOUS AREA (INCLUDING CRAWL SPACES OR THE SPACE BETWEEN A DROPPED CEILING AND THE FLOOR OR ROOF DECK ABOVE), SUCH AS CLASSROOM(S), A CAFETERIA, GYMNASIUM, HALLWAY(S), DESIGNATED BY A PERSON ACCREDITED TO PREPARE MANAGEMENT PLANS, DESIGN ABATEMENT PROJECTS, OR CONDUCT RESPONSE ACTIONS.

HIGH EFFICIENCY PARTICULATE AIR (HEPA) - REFERS TO A FILTERING SYSTEM CAPABLE OF TRAPPING AND RETAINING AT LEAST 99.97 PERCENT OF ALL MONODISPERSED PARTICLES 0.3 μ IN DIAMETER OR LARGER.

INSPECTION - AN ACTIVITY UNDERTAKEN IN A SCHOOL BUILDING, OR A PUBLIC OR COMMERCIAL BUILDING, TO DETERMINE THE PRESENCE OR LOCATION, OR TO ASSESS THE CONDITION OF, FRIABLE OR NON-FRIABLE ASBESTOS-CONTAINING BUILDING MATERIAL (ACBM) OR SUSPECTED ACBM, WHETHER BY VISUAL OR PHYSICAL EXAMINATION, OR BY COLLECTING SAMPLES OF SUCH MATERIAL. THIS TERM INCLUDES REINSPECTION OF FRIABLE AND NON-FRIABLE KNOWN OR ASSUMED ACBM WHICH HAS BEEN PREVIOUSLY IDENTIFIED.

LOCAL EDUCATION AGENCY (LEA) -

1. ANY LOCAL EDUCATIONAL AGENCY AS DEFINED IN SECTION 198 OF THE ELEMENTARY AND SECONDARY EDUCATION ACT OF 1965 (20 U.S.C. 3381).
2. THE OWNER OF ANY NONPUBLIC, NONPROFIT, ELEMENTARY OR SECONDARY SCHOOL BUILDING.
3. THE GOVERNING AUTHORITY OF ANY SCHOOL OPERATED UNDER THE DEFENSE DEPENDENT'S EDUCATION SYSTEM PROVIDED FOR UNDER THE DEFENSE DEPENDENTS' EDUCATION ACT OF 1978 (20 U.S.C. 921, ET SEQ.).

MAJOR FIBER RELEASE EPISODE - ANY UNCONTROLLED OR UNINTENTIONAL DISTURBANCE OF ACBM, RESULTING IN A VISIBLE EMISSION, WHICH INVOLVES THE FALLING OR DISLODGING OF 3 SQUARE OR LINEAR FEET OR LESS OF FRIABLE ACBM.

MISCELLANEOUS MATERIAL - MEANS INTERIOR BUILDING MATERIAL ON STRUCTURAL COMPONENTS, STRUCTURAL MEMBERS OR FIXTURES, SUCH AS FLOOR AND CEILING TILES, AND DOES NOT INCLUDE SURFACING MATERIAL OR THERMAL SYSTEM INSULATION.

NON-FRIABLE - MEANS MATERIAL IN A SCHOOL BUILDING WHICH WHEN DRY MAY NOT BE CRUMBLLED, PULVERIZED, OR REDUCED TO POWDER BY HAND PRESSURE.

OPERATIONS AND MAINTENANCE PROGRAM - A PROGRAM OF WORK PRACTICES TO MAINTAIN FRIABLE ACBM IN GOOD CONDITION, ENSURES CLEANUP OF ASBESTOS FIBERS PREVIOUSLY RELEASED, AND PREVENT FURTHER RELEASE BY MINIMIZING AND CONTROLLING FRIABLE ACBM DISTURBANCE OR DAMAGE.

POTENTIAL DAMAGE - MEANS CIRCUMSTANCES IN WHICH:

1. FRIABLE ASBESTOS CONTAINING BUILDING MATERIAL (ACBM) IS IN AN AREA REGULARLY USED BY BUILDING OCCUPANTS, INCLUDING MAINTENANCE PERSONNEL, IN THE COURSE OF THEIR NORMAL ACTIVITIES; AND
2. THERE ARE INDICATIONS THAT THERE IS A REASONABLE LIKELIHOOD THAT THE MATERIAL OR ITS COVERING WILL BECOME DAMAGED, DETERIORATED, OR DELAMINATED DUE TO FACTORS SUCH AS CHANGES IN BUILDING USE, CHANGES IN OPERATIONS AND MAINTENANCE PRACTICES, CHANGES IN OCCUPANCY, OR RECURRENT DAMAGE.

POTENTIAL SIGNIFICANT DAMAGE - CIRCUMSTANCES IN WHICH: (1) FRIABLE ASBESTOS-CONTAINING BUILDING MATERIAL (ACBM) IS IN AN AREA REGULARLY USED BY BUILDING OCCUPANTS, INCLUDING MAINTENANCE PERSONNEL, IN THE COURSE OF THEIR NORMAL ACTIVITIES; AND (2) THERE ARE INDICATIONS THAT THERE IS A REASONABLE LIKELIHOOD THAT THE

MATERIAL OR ITS COVERING WILL BECOME SIGNIFICANTLY DAMAGED, DETERIORATED, OR DELAMINATED DUE TO FACTORS SUCH AS CHANGES IN BUILDING USE, CHANGES IN OPERATIONS AND MAINTENANCE PRACTICES, CHANGES IN OCCUPANCY, OR RECURRENT DAMAGE; AND (3) THE MATERIAL IS SUBJECT TO MAJOR OR CONTINUING DISTURBANCE, DUE TO FACTORS INCLUDING, BUT NOT LIMITED TO, ACCESSIBILITY OR, UNDER CERTAIN CIRCUMSTANCES, VIBRATION OR AIR EROSION.

REMOVAL - THE TAKING OUT OR THE STRIPPING OF SUBSTANTIALLY ALL ACBM FROM A DAMAGED AREA, A FUNCTIONAL SPACE, OR A HOMOGENEOUS AREA IN A SCHOOL BUILDING.

REPAIR - RETURNING DAMAGED ACBM TO AN UNDAMAGED CONDITION OR TO AN INTACT STATE SO AS TO PREVENT FIBER RELEASE.

RESPONSE ACTION - A METHOD, INCLUDING REMOVAL, ENCAPSULATION, ENCLOSURE, REPAIR, AND OPERATIONS AND MAINTENANCE, THAT PROTECTS HUMAN HEALTH AND THE ENVIRONMENT FROM FRIABLE ACBM.

SIGNIFICANTLY DAMAGED FRIABLE MISCELLANEOUS ASBESTOS-CONTAINING MATERIAL (ACM) - MEANS DAMAGED FRIABLE MISCELLANEOUS ACM WHERE THE DAMAGE IS EXTENSIVE AND SEVERE.

SIGNIFICANTLY DAMAGED FRIABLE SURFACING ASBESTOS-CONTAINING MATERIAL (ACM) - MEANS DAMAGED FRIABLE SURFACING ACM IN A FUNCTIONAL SPACE WHERE THE DAMAGE IS EXTENSIVE AND SEVERE.

SURFACING MATERIAL - MEANS MATERIAL IN A SCHOOL BUILDING THAT IS SPRAYED ON, TROWELLED ON, OR OTHERWISE APPLIED TO SURFACES SUCH AS ACOUSTICAL PLASTER ON CEILINGS, FIREPROOFING MATERIALS ON STRUCTURAL MEMBERS, OR OTHER MATERIALS ON SURFACES FOR ACOUSTICAL, FIREPROOFING, OR OTHER PURPOSES.

THERMAL SYSTEM INSULATION - MEANS MATERIAL IN A SCHOOL BUILDING APPLIED TO PIPES, FITTINGS, BOILERS, BREECHING, TANKS, DUCTS, OR OTHER INTERIOR STRUCTURAL COMPONENTS TO PREVENT HEAT LOSS OR GAIN, OR WATER CONDENSATION, OR FOR OTHER PURPOSES.

VIBRATION - THE PERIODIC MOTION OF FRIABLE ACBM WHICH MAY RESULT IN THE RELEASE OF ASBESTOS.

AIR EROSION - THE PASSAGE OF AIR OVER FRIABLE ACBM WHICH MAY RESULT IN THE RELEASE OF ASBESTOS FIBERS.

ASBESTOS - THE ASBESTIFORM VARIETIES OF CHYSOTILE (OTHERWISE KNOWN AS SERPENTINE); CROCIDOLITE (OTHERWISE KNOWN AS RIEBECKITE); AMOSITE (OTHERWISE KNOWN AS CUMMINGTONITEGRUNERITE); ANTHOPHYLITE; TREMOLITE; AND ACTINOLITE.

ASBESTOS-CONTAINING MATERIAL (ACM) - WHEN REFERRING TO SCHOOL BUILDINGS, MEANS ANY MATERIALS OR PRODUCT WHICH CONTAINS MORE THAN 1 PERCENT ASBESTOS.

ASBESTOS CONTAINING BUILDING MATERIAL (ACBM) - MEANS SURFACING ASBESTOS-CONTAINING MATERIAL (ACM), THERMAL SYSTEM INSULATION ACM, OR MISCELLANEOUS ACM THAT IS FOUND IN OR ON INTERIOR STRUCTURAL MEMBERS OR OTHER PARTS OF A SCHOOL BUILDING.

ASBESTOS DEBRIS - PIECES OF ACBM THAT CAN BE IDENTIFIED BY COLOR, TEXTURE, OR COMPOSITION, OR DUST, IF THE DUST IS DETERMINED BY AN ACCREDITED INSPECTOR TO BE ACM.

CURRENT LAW - CURRENT LAW REFERS TO THE ASBESTOS HAZARD EMERGENCY RESPONSE ACT OF 1986 (AHERA). (PUBLIC LAW 99-519)

DAMAGE - ANY DETERIORATION OR PHYSICAL INJURY SUCH THAT THE INTERNAL STRUCTURE (COHESION) IS INADEQUATE, OR WHICH HAS DELAMINATED SUCH THAT ITS BOND TO THE SUBSTRATE (ADHESION) IS INADEQUATE, OR WHICH FOR ANY OTHER REASON LACKS FIBER COHESION OR ADHESION QUALITIES.

DAMAGED FRIABLE MISCELLANEOUS ACM - FRIABLE MISCELLANEOUS ACM WHICH HAS DETERIORATED OR SUSTAINED PHYSICAL INJURY SUCH THAT THE INTERNAL STRUCTURE (COHESION) OF THE MATERIAL IS INADEQUATE OR, IF APPLICABLE, WHICH HAS DELAMINATED SUCH THAT ITS BONDS TO THE SUBSTRATE (ADHESION) ARE INADEQUATE OR WHICH FOR ANY REASON LACKS FIBER COHESION OR ADHESION QUALITIES.

DAMAGE SEVERITY - THE TOTAL AMOUNT OF DAMAGED MATERIAL, CATEGORIZED AS

1. MAJOR - GREATER THAN OR EQUAL TO 160 SQUARE FEET OR 260 LINEAR FEET,
2. SEVERE - GREATER THAN 25 SQUARE FEET OR 10 LINEAR FEET, BUT LESS THAN 160 SQUARE FEET OR 260 LINEAR,
3. MINOR - LESS THAN OR EQUAL TO 25 SQUARE FEET OR 10 LINEAR FEET, AND
4. OCCASIONAL - DAMAGE WHICH OCCURS AT IRREGULAR OR INFREQUENT INTERVALS.