



U.S. Department of
Veterans Affairs

PROJECT NUMBER: 578-16-020 Repair Exterior Building 20

BUILDING DIRECTORY

- 1 OUTPATIENT CLINICS, ADMINISTRATION OFFICES AND RESEARCH

2 ENGINEERING, FISCAL, SAFETY OFFICES

3 ENGINEERING SHOPS

4 DRM

5 POWER HOUSE

7 STRUCTURE'S SHOP

8 ENGINEERING, MRW / POLICE

9 AUDITORIUM, RECREATION AND VOLUNTARY SERVICES

12 EMPLOYEE GYM, COMP & PEN

13 COUNSELING CENTER

14 CATHOLIC CHARITIES

15 UNDERGROUND WATER RESERVOIR (700,000 GALLON)

16 I. G. OFFICE OF AUDIT

17 HUMAN RESOURCES

18 VIREC
- 19 BASEBALL FIELD and SEATING STAND

20 MOTOR POOL

21 MAINTENANCE STORAGE

23 HOUSEKEEPING QUARTERS

24 HOUSEKEEPING QUARTERS

25 HOUSEKEEPING QUARTERS

26 HOUSEKEEPING QUARTERS

27 HOUSEKEEPING QUARTERS

28 HOUSEKEEPING QUARTERS

29 HOUSEKEEPING QUARTERS

30 EMS STORAGE

31 QUARTERS

32 QUARTERS

33 RADIATION LABORATORY

34 GEORGE DILBOY MEMORIAL STATUE

35 MAIN GATE HOUSE
- 37 NAC / CMOP

42 FLAG POLE

45 CANTEEN & POST OFFICE

46 FORMER GOLF COURSE RECREATION BUILDING

47 GAS METER HOUSE

48 LAUNDRY DISTRIBUTION

53 CATHOLIC CHARITIES

100 FISHER HOUSE FOUNDATION

113 BLIND REHABILITATION CENTER

128 SPINAL CORD INJURY AND DISORDERS CENTER

195 WATER STORAGE TANK (1,000,000 GALLON)

197 VALVE HOUSE

200 MAIN HOSPITAL

201 OXYGEN STORAGE
- 202 ELECTRICAL SUBSTATION

203 PATIENT RECREATION PAVILION

204 GREENHOUSE

215 DATA PROCESSING CENTER

217 EXTENDED CARE

218 EMERGENCY GENERATOR FOR BUILDING 217

219 CHILLER FOR BLDG 217

220 WAREHOUSE/SERVICE BUILDING

221 RCF LONG TERM SPINAL CORD INJURY UNIT

222 EMERGENCY GENERATOR

223 EMERGENCY GENERATOR

224 EMERGENCY GENERATOR

225 EMERGENCY GENERATOR

226 EMERGENCY GENERATOR
- 227 EMERGENCY GENERATOR

228 CLINICAL AREAS

229 RESEARCH

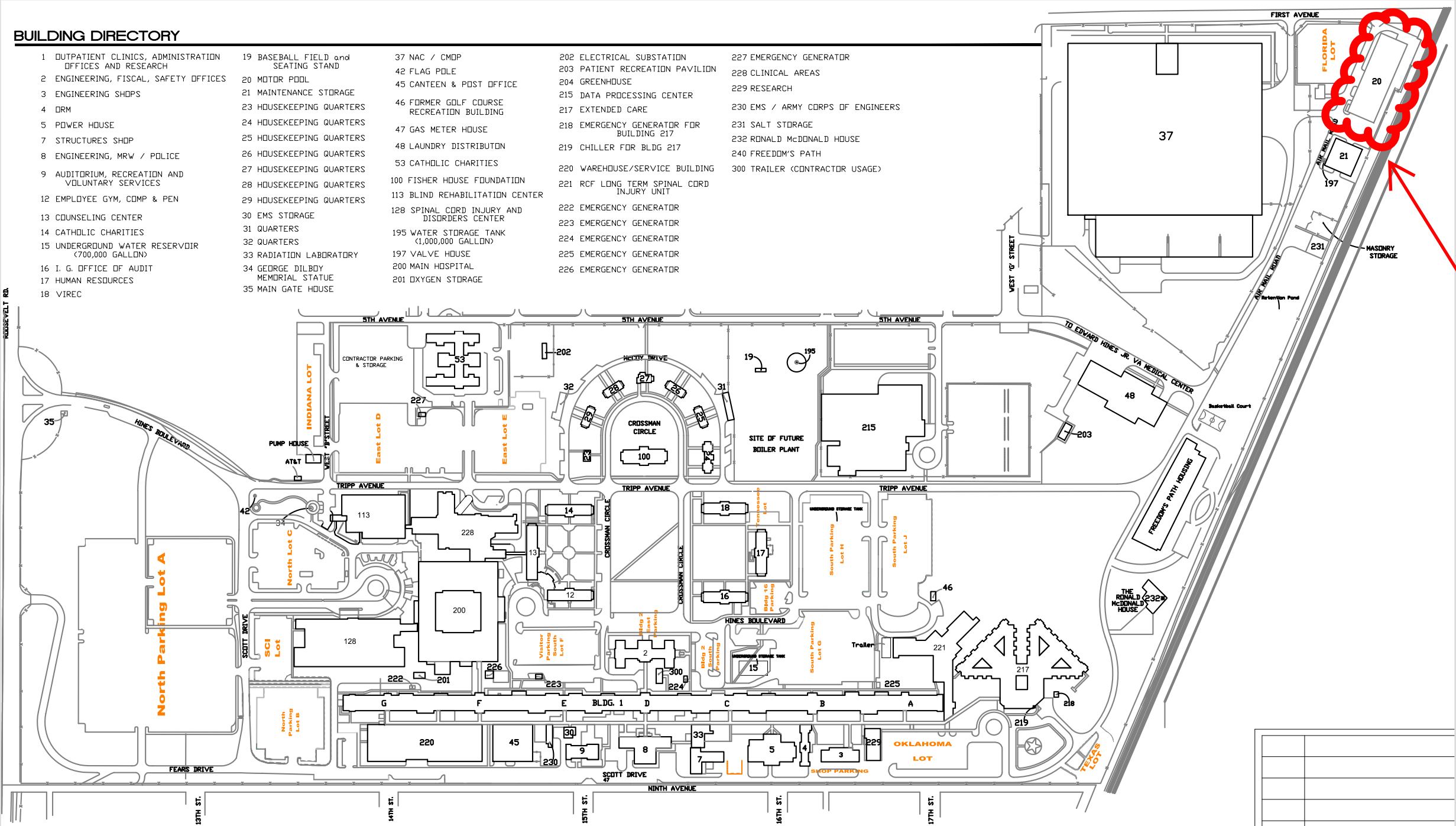
230 EMS / ARMY CORPS OF ENGINEERS

231 SALT STORAGE

232 RONALD McDONALD HOUSE

240 FREEDOM'S PATH

300 TRAILER (CONTRACTOR USAGE)



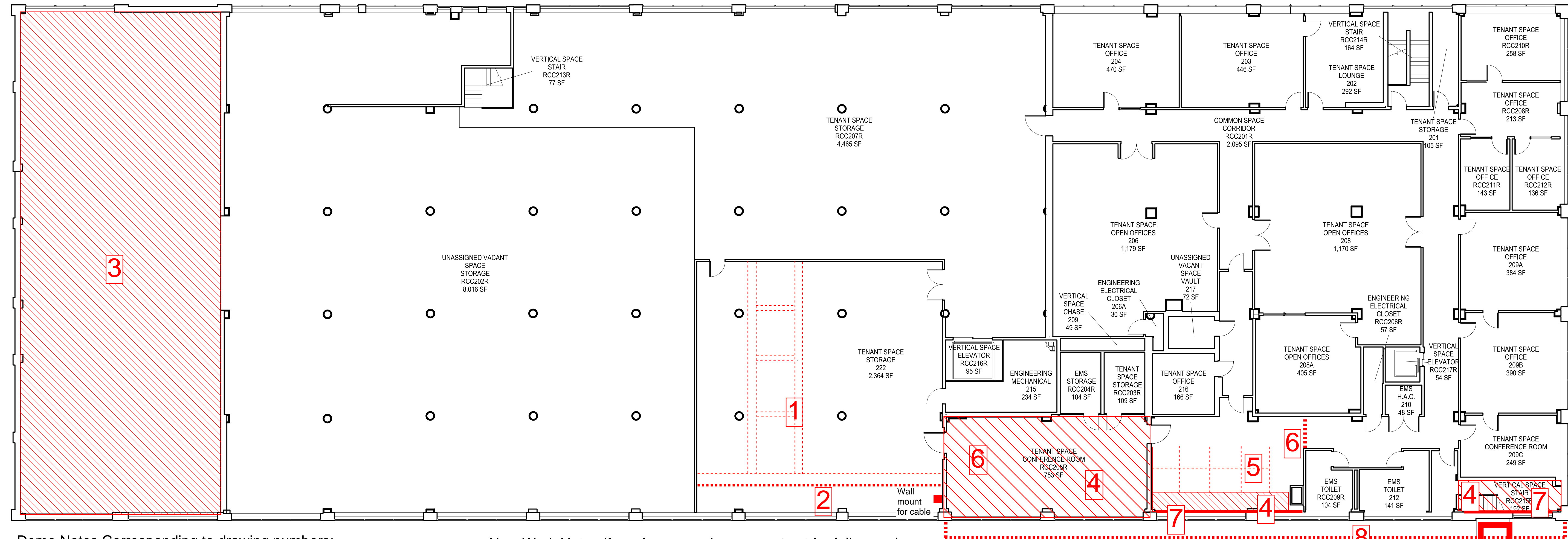
FACILITY DEPARTMENT BY LEVEL	
FACILITY DEPARTMENT	AREA
0B - BASEMENT	
COMMON SPACE	22 SF
ENGINEERING	1,758 SF
VERTICAL SPACE	52 SF
01 - LEVEL 01	
A&MM ADMIN	4,182 SF
COMMON SPACE	2,847 SF
EMS	12,256 SF
ENGINEERING	1,059 SF
TENANT SPACE	5,208 SF
UNASSIGNED VACANT SPACE	2,996 SF
VERTICAL SPACE	647 SF
01M - MEZZANINE	
EMS	1,219 SF
VERTICAL SPACE	78 SF
02 - LEVEL 02	
COMMON SPACE	2,095 SF
EMS	396 SF
ENGINEERING	321 SF
TENANT SPACE	13,697 SF
UNASSIGNED VACANT SPACE	8,088 SF
VERTICAL SPACE	631 SF
02M - MEZZANINE	
ENGINEERING	395 SF
BUILDING NET GROSS TOTAL	57,947 SF

Project
Location

01	578-16-020 Repair Exterior Bldg 20	4/15/2016
NO.	REVISION / DESCRIPTION	ISSUE DATE

Not to scale. Contractor is responsible for field verifying all conditions.

Numbers (in red) correspond to demolition notes only.



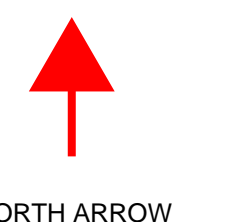
Demo Notes Corresponding to drawing numbers:

1. Demo existing cable tray and all associated hangers
2. Demo existing network cable conduit and associated hangers
3. Demo existing roof material, structure to remain
4. Demo ceiling tiles, salvage/keep grid in place
5. Demo office furniture
6. Demo carpet and tile below from entire room
7. Demo damaged drywall
8. Demo 6 windows/windowbays from southeast corner 2nd floor
9. Demo existing chimney and parapet, support electrical conduit

New Work Notes (for reference only, see contract for full scope):

1. Install wall mounted unistrut and coil network cable neatly around. See detail 1
2. Install 6 new replacement windows at south face
3. Install new drywall to replace removed
4. Install new metal roofing to replace removed
5. New paint for entire room. Sherwin Williams Paint color TBD
6. Install ceiling tile as needed to replace removed
7. Repoint existing exterior brick as needed, patch roof membrane as indicated in SOW
8. Replace existing brick at columns and wall side of demolished chimney area as needed.
9. Install new flashing and gutter at southeast roof corner

Detail 1 Intent - Wall mounted unistrut for network cable bundle



CONTRACTING FIRM:

CLIENT &
PROJECT
NAME:

DRAWING TITLE:

EDWARD HINES, JR. VA HOSPITAL

FILE: FACILITY DEPARTMENT FLOOR PLAN - LEVEL 02

APPROVED BY:

BLDG NUMBER: 020

PROJECT NUMBER:	578-16-020
-----------------	------------

DRAWING SCALE:

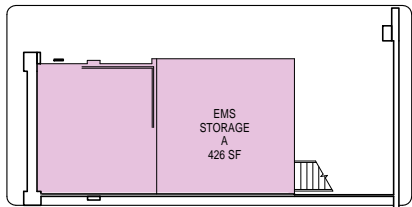
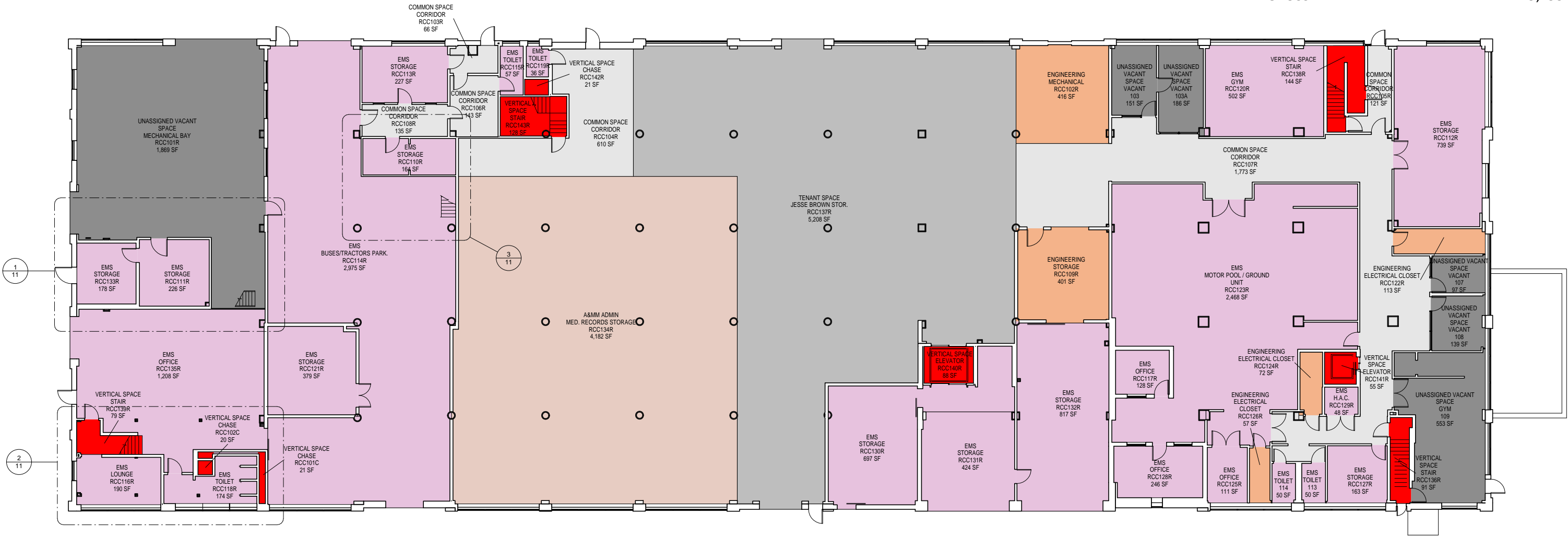
ISSUE DATE: 8/3/2016



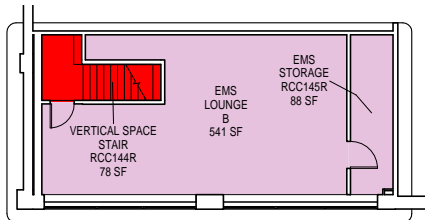
**U.S. Department of
Veterans Affairs**

No work on this level. Reference Only.

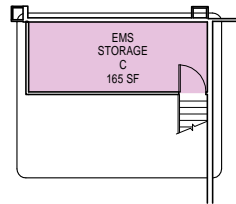
FACILITY DEPARTMENT		AREA
A&MM ADMIN		4,182 SF
COMMON SPACE		2,847 SF
EMS		12,256 SF
ENGINEERING		1,059 SF
TENANT SPACE		5,208 SF
UNASSIGNED VACANT SPACE		2,996 SF
VERTICAL SPACE		647 SF
LEVEL NET GROSS AREA		29,195 SF



1 MEZZANINE, STORAGE



2 MEZZANINE, LOUNGE



3 MEZZANINE, STORAGE

FACILITY DEPARTMENT		MEZZ AREA
EMS		1,219 SF
VERTICAL SPACE		78 SF
LEVEL NET GROSS AREA		1,297 SF



1/17/2016 4:20:14 PM

CLIENT &
PROJECT
NAME:

EDWARD HINES, JR. VA HOSPITAL

DRAWING TITLE:

FACILITY DEPARTMENT FLOOR PLAN - LEVEL 01

APPROVED BY:

BLDG NUMBER: 020

PROJECT NUMBER:

DRAWING SCALE: 3/32" = 1'-0"

ISSUE DATE: 01/20/2016



U.S. Department of
Veterans Affairs

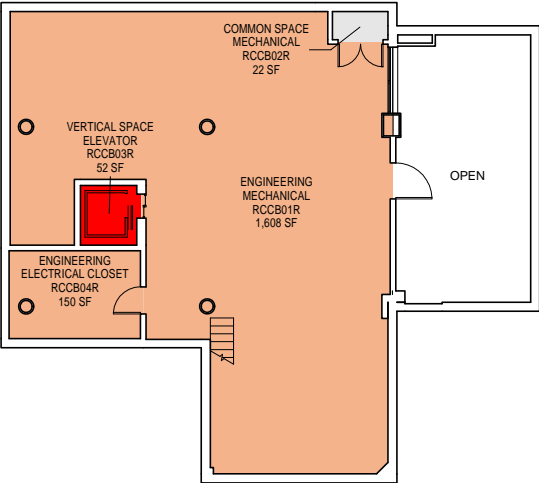
FACILITY DEPARTMENT

- COMMON SPACE
- ENGINEERING
- VERTICAL SPACE
- LEVEL NET GROSS AREA

AREA

- 22 SF
- 1,758 SF
- 52 SF
- 1,832 SF

No work on this level. Reference Only.



1/17/2016 4:20:13 PM

CLIENT & PROJECT NAME:	EDWARD HINES, JR. VA HOSPITAL
	DRAWING TITLE:
	FACILITY DEPARTMENT FLOOR PLAN - BASEMENT

APPROVED BY:	
BLDG NUMBER: 020	
PROJECT NUMBER:	
DRAWING SCALE: 3/32" = 1'-0"	ISSUE DATE: 01/20/2016

