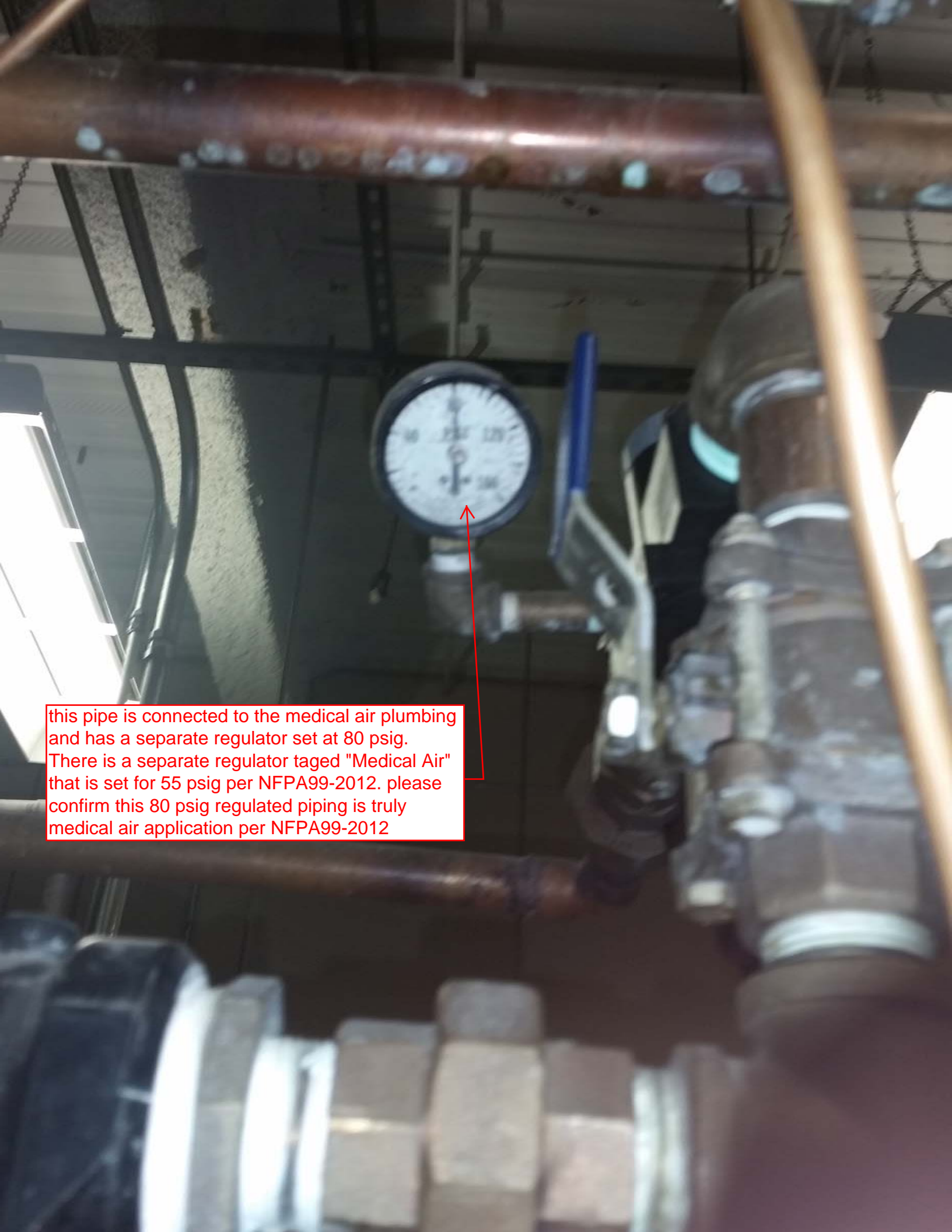




Please confirm that
this piping is a
Medical Air
application per
NFPA99-2012



this pipe is connected to the medical air plumbing and has a separate regulator set at 80 psig. There is a separate regulator tagged "Medical Air" that is set for 55 psig per NFPA99-2012. please confirm this 80 psig regulated piping is truly medical air application per NFPA99-2012