

DEMOLITION PLAN

BARIATRIC ROOM
3051A

4'-1 1/2"

4'-7 3/4"

8'-2 3/4"

6'-0 1/2"

5'-4 3/4"

REMOVE SINK KEEP FOR RELOCATION

REMOVE KEEP FOR RELOCATION

REMOVE KEEP FOR RELOCATION

REPLACE TOILET

DEMO CEILING

DEMO WALLS
DOOR AND DOOR FRAME

REMOVE SINK KEEP FOR RELOCATION

DRAINAGE OF FLOOR TO BE CHECK FOR NEW LOCATION OF SHOWER HEAD.
IF FOUND NOT TO BE SUFFICIENT DRAINAGE THAN THE FLOOR SLOP WILL
NEED TO BE CHANGED.

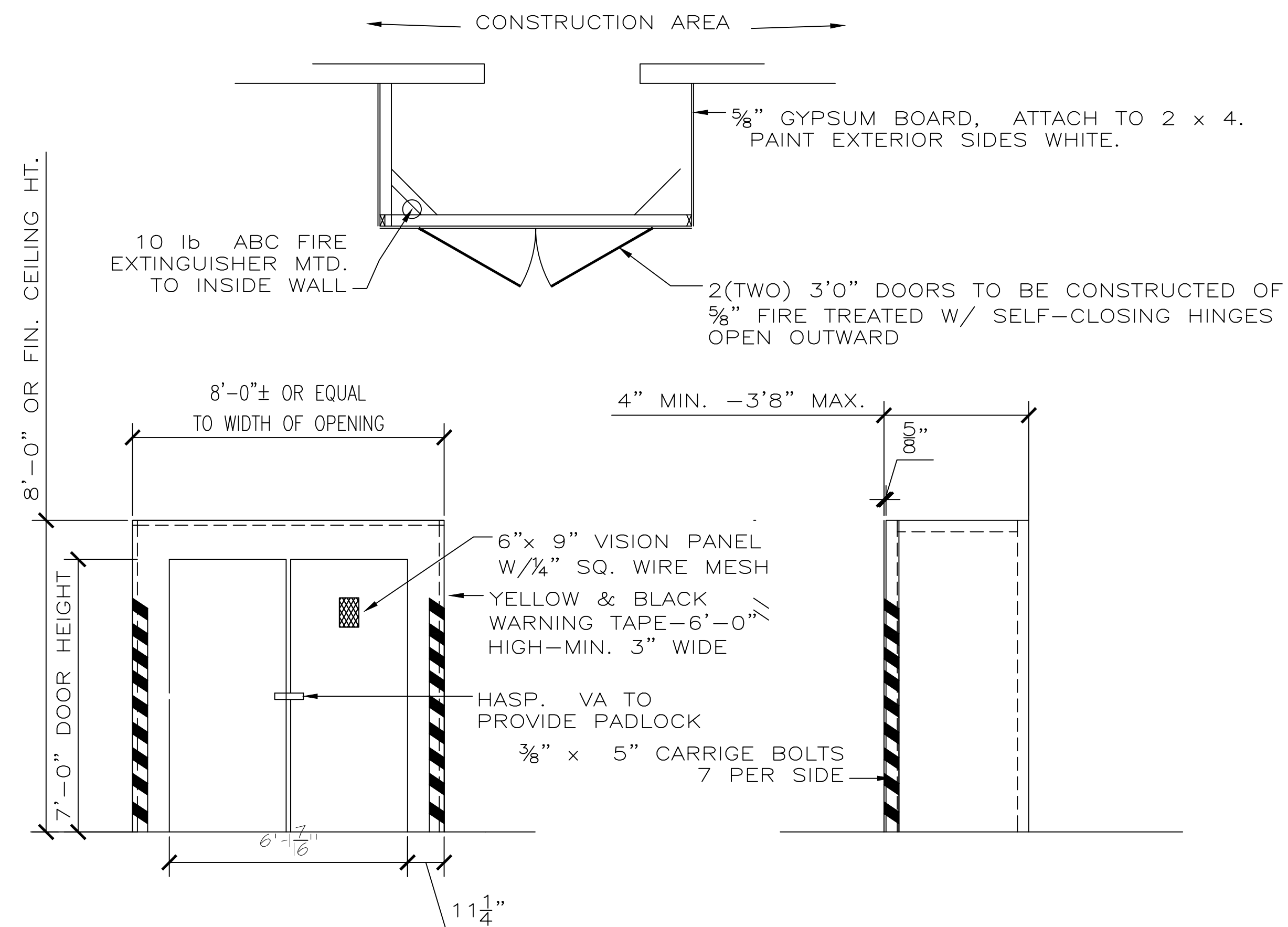
FILL/REMOVE CONCRETE FROM WALL AREA

RELOCATE VENT WORK.
FILL PIPE PENETRATION.

REMOVE AND KEEP FOR RELOCATION

REMOVE
KEEP FOR RELOCATION

REMOVE
KEEP SHOWER HEAD FOR RELOCATION
FILL PIPE PENETRATION.



Technical drawing of a fire door assembly, showing side and top views with dimensions and specifications.

Side View Dimensions and Specifications:

- Overall height: 8'-0" OR FIN. CEILING HT.
- Door height: 7'-0"
- Door width: 3'-0"
- Threshold height: 6"
- Door frame: 6" x 9" VISION PANEL W/ 1/4" SQ. WIRE MESH
- Warning tape: YELLOW & BLACK WARNING TAPE - 6'-0" HIGH - MIN. 3" WIDE
- Hasp: HASP. VA TO PROVIDE PADLOCK
- Carriage bolts: 3/8" x 5" CARRIAGE BOLTS 7 PER SIDE

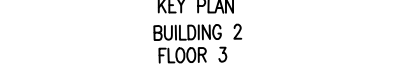
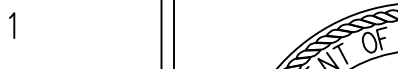
Top View Dimensions and Specifications:

- Overall width: 8'-0" NOM.
- Door width: 3'-0"
- Door height: 7'-0"
- Threshold height: 6"
- Door frame: 6" x 9" VISION PANEL W/ 1/4" SQ. WIRE MESH
- Warning tape: YELLOW & BLACK WARNING TAPE - 6'-0" HIGH - MIN. 3" WIDE
- Hasp: HASP. VA TO PROVIDE PADLOCK
- Carriage bolts: 3/8" x 5" CARRIAGE BOLTS 7 PER SIDE

Construction Area Details:

- CONSTRUCTION AREA (indicated by arrows)
- 5/8" GYPSUM BOARD, ATTACH TO 2 x 4. PAINT EXTERIOR SIDES WHITE.
- DOOR OF 5/8" FIRE TREATED W/ SELF-CLOSING HINGES - OPEN OUTWARD
- 10 lb ABC FIRE EXTINGUISHER MTD. TO INSIDE WALL

LOCATION OF WORK AREAS THAT REQUIRE DUST BARRIERS

		<div><div>KEY PLAN BUILDING 2 FLOOR</div></div>	<div>RECOMMEND APPROVAL</div> <table><tr><td>REQUESTER</td><td>Date</td><td></td><td></td></tr><tr><td>CHIEF OF SERVICE</td><td>Date</td><td>CHIEF OF STAFF</td><td>Date</td></tr><tr><td>ASSOC. DIR. PATIENT CARE SVC.</td><td>Date</td><td>ASSOC. DIR. for OPERATIONS</td><td>Date</td></tr><tr><td colspan="3">APPROVAL BY:</td><td>Date</td></tr><tr><td colspan="3">MEDICAL CENTER DIRECTOR</td><td></td></tr></table>				REQUESTER	Date			CHIEF OF SERVICE	Date	CHIEF OF STAFF	Date	ASSOC. DIR. PATIENT CARE SVC.	Date	ASSOC. DIR. for OPERATIONS	Date	APPROVAL BY:			Date	MEDICAL CENTER DIRECTOR				<div>Drawing Title</div> <div>DEMOLITION PLAN</div>		<div>Project Title</div> <div>ISOLATION & BARIATRIC RENAVATION Bldg. 2 FI 3</div>		<div>Date</div> <div>14 OCT 2011</div>	 <div>Department of Veterans Affairs</div>
REQUESTER	Date																															
CHIEF OF SERVICE	Date		CHIEF OF STAFF	Date																												
ASSOC. DIR. PATIENT CARE SVC.	Date		ASSOC. DIR. for OPERATIONS	Date																												
APPROVAL BY:			Date																													
MEDICAL CENTER DIRECTOR																																
				<div>Approved: Safety Manager/M&O Supervisor</div>		<div>Building Number</div> <div>BUILDING # 2</div>	<div>Checked</div>	<div>Drawn</div> <div>BLF</div>	<div>Project No.</div> <div>659-12-001</div>																							
				<div>Approved:Chief of Facilities Management Svr.</div>		<div>Location</div> <div>W.G.(Bill) Hefner Medical Center 1601 Brenner Ave. Salisbury NC 28144</div>		<div>DRAWING NO.</div> <div>A-101</div>																								
								<div>DWG. 2 OF 11</div>																								
Revision	Date																															