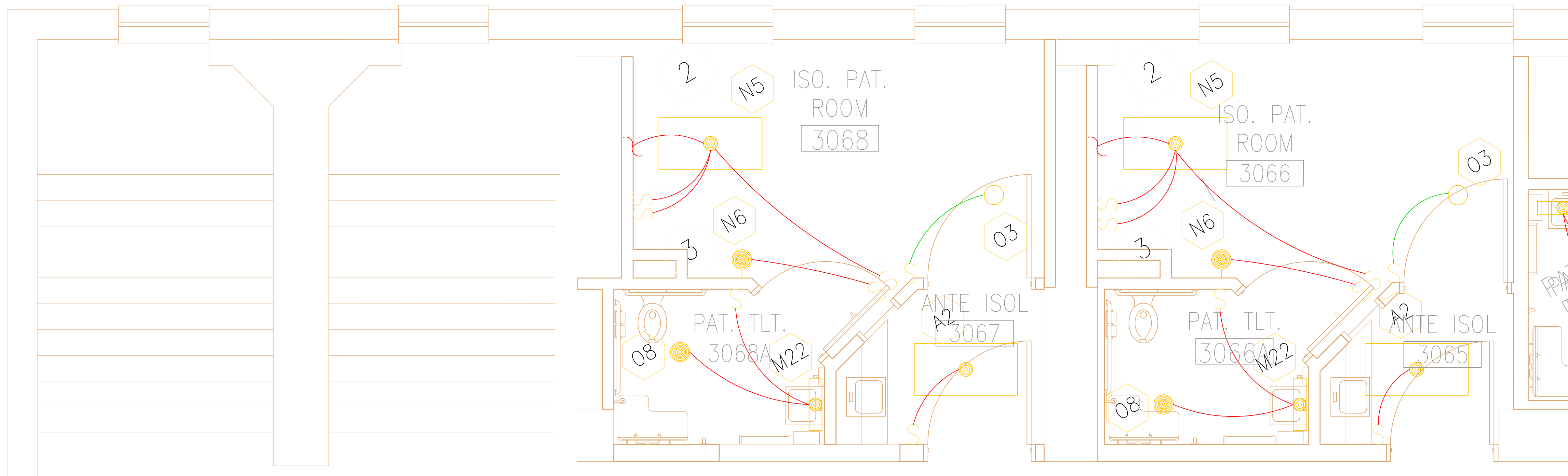


LIGHTING & ELECTRICAL CONNECTIONS

SCALE IN FEET 1:30



LEGEND

ELECTRICAL SYMBOLS

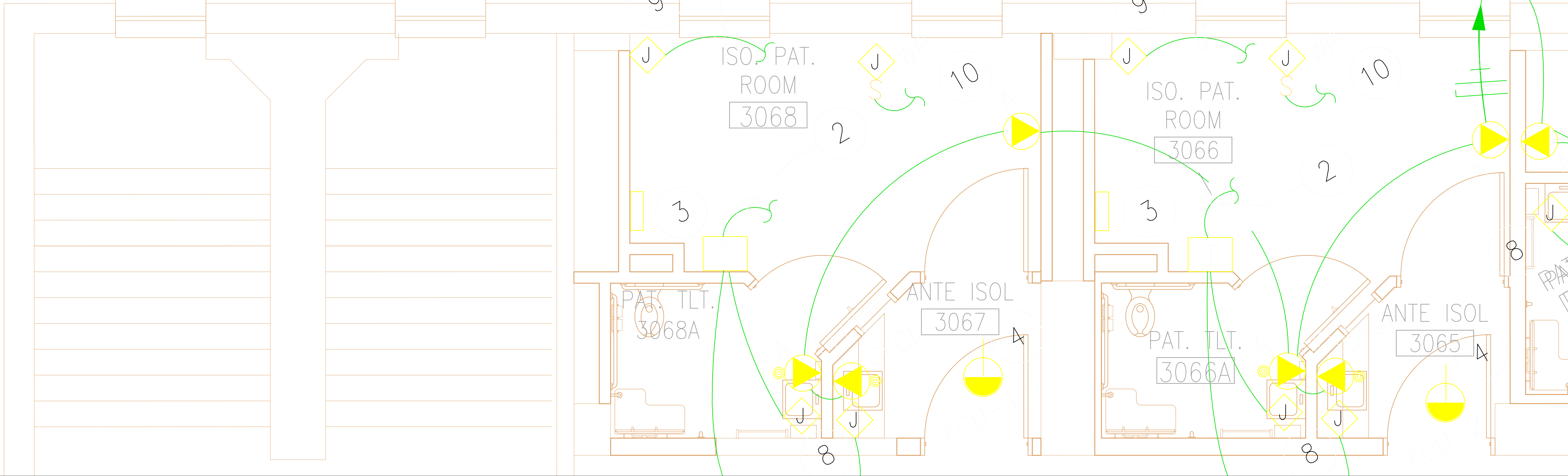
- LIGHTING**
- (A) LIGHTING FIXTURE DESIGNATION. TYPICAL FOR ALL FIXTURES OF THE SAME SHAPE IN ROOM.
  - FLOURESCENT LIGHTING FIXTURE CEILING MOUNTED.
  - SHADED OUTLET INDICATES LIGHTING FIXTURE ON EMERGENCY CIRCUIT.
  - CEILING MOUNTED EXIT SIGN. PROVIDE NUMBER OF FACES AND CHEVRONS AS INDICATED ON DRAWINGS. W = WALL MOUNTED. SEE LIGHTING FIXTURE SCHEDULE.
  - INCANDESCENT OR COMPACT FLOURESCENT LIGHTING FIXTURE CEILING MOUNTED.
  - INCANDESCENT OR COMPACT FLOURESCENT LIGHTING FIXTURE WALL MOUNTED ON EMERGENCY CIRCUIT.
  - FLOURESCENT LIGHTING FIXTURE WALL MOUNTED OR UNDER CABINET.
  - FLOURESCENT LIGHTING FIXTURE WALL MOUNTED OR UNDER CABINET ON EMERGENCY CIRCUIT.
- SWITCHES**
- S SINGLE POLE SWITCH, MOUNTED 44" AFF.
  - SS TWO SINGLE POLE SWITCHES IN A 2-GANG BOX, MOUNTED 44" AFF. PROVIDE DIVIDER FOR DIFFERENT VOLTAGES OR BRANCHES.
  - SSS THREE SINGLE POLE SWITCHES IN A 3-GANG BOX, MOUNTED 44" AFF. PROVIDE DIVIDER(S) FOR DIFFERENT VOLTAGES OR BRANCHES.
  - SS TWO SINGLE POLE SWITCHES IN A 2-GANG BOX, MOUNTED 44" AFF. TO COMPLY WITH ENERGY CODE, EITHER SWITCH INBOARD AND OUTBOARD LAMPS SEPARATELY OR STEP-DIM BOTH LAMPS TO 50%.
- MODIFIERS FOR SWITCHES:**
- 3 = THREE WAY
  - 4 = FOUR WAY
  - D = DIMMER
  - DT = DOUBLE THROW
  - LV = LOW VOLTAGE
  - OS = OCCUPANCY SENSOR
  - T = TIMER
  - OS&T = MULTIPLE SWITCH LEGS
- NOTE:** MOUNTING HEIGHT FOR THE FOLLOWING SWITCHES SHALL BE 40" (1016mm) AFF IN ELECTRICAL CLOSET, MECHANICAL ROOMS. MOUNTING HEIGHT SHALL BE 4'-8" (1372mm) AFF.
- S DIMMER SWITCH - WITH SILICON CONTROLLED RECTIFIER.
- S ROCKER TYPE SWITCH.
- NOTE:** MOUNTING HEIGHT FOR THE FOLLOWING SWITCHES SHALL BE 4'-8" (1372mm) AFF UNLESS OTHERWISE NOTED.

ELECTRICAL SYMBOLS

- COMMUNICATIONS**
- ◀ OUTLET FOR TV MONITOR (CCIV SYSTEM), CONSISTS OF 120V, 20A BRANCH CIRCUIT FROM NORMAL POWER SYSTEM (SEE E-2038) AND LOW-VOLTAGE TV CABLE IN 3/4" TO EXISTING HEADEND.
  - ◀ VOICE/DATA OUTLET, WALL MOUNTED 18" AFF.
- FIRE ALARM**
- (F) FIRE ALARM MANUAL PULL STATION, 44" AFF.
  - (FA) FIRE ALARM CHIME & VISUAL ALARM SIGNAL, WALL MOUNTED 80" AFF.
  - (FD) SMOKE DETECTOR DUCT TYPE.
  - (FM) FIRE ALARM CEILING MOUNTED REMOTE INDICATING LIGHT. W = WALL MOUNTED 12" BELOW CEILING.
- NURSE CALL**
- (NC) NURSE'S CALL MASTER STATION MTD ON NURSE'S COUNTER TOP UNLESS OTHERWISE NOTED.
  - (NCT) NURSE CALL TERMINAL CABINET.
  - (N) NURSE'S CALL STATION - MTD 6'-0" (1830 MM) AFF FOR SHOWER LOCATION (PATIENT TOILET) MTD 4'-6" (1400 MM) AFF FOR TUB LOCATION (PATIENT TOILET) MTD 3'-0" (915 MM) AFF FOR TOILET LOCATION.
  - (ND) NURSE'S CALL DUTY STATION. MTD 5'-0" (1530 MM) AFF UNLESS NOTED OTHERWISE.
  - (NI) NURSE'S CALL STATION, MTD 5'-0" (1530 MM) AFF UNLESS OTHERWISE NOTED. (PATIENT STATION)
  - (NU) UTILITY CALL STATION, MTD 5'-0" (1530 MM) AFF UNLESS OTHERWISE NOTED.

OUTLETS & ELECTRICAL CONNECTIONS

SCALE IN FEET 1:30

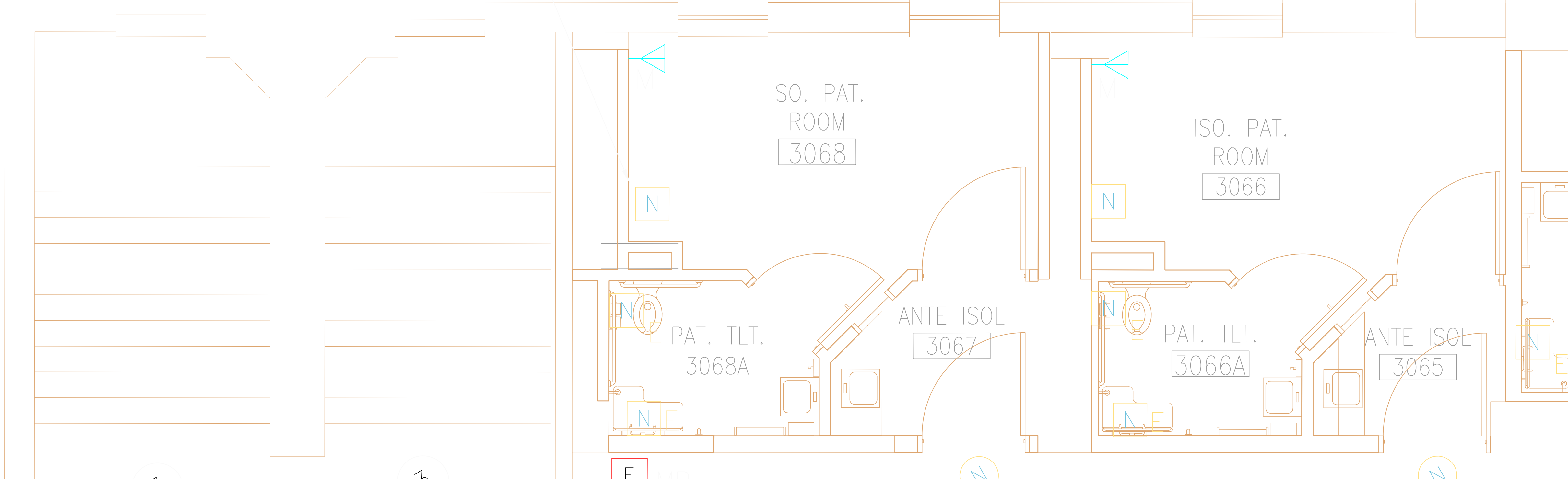


ELECTRICAL SYMBOLS

- ELECTRICAL STRIP MOLD (OUTLETS ON 2'-0" (610mm) CENTERS OR AS DESIGNATED ON DRAWINGS), MTD 3'-6" (1067mm) AFF OR AS INDICATED.**
- 120V, 20A, 1 PHASE, 2-POLE, 3W, NEMA 5-20R, MOUNTED 18" AFF TO CENTER OF DEVICE.
  - LOCATE RECEPTACLE 44" AFF TO CENTER OF DEVICE.
  - TWO(2) 120V, 20A, 1A, 2-POLE, 3-WIRE, NEMA 5-20R IN 2-GANG BOX MOUNTED 18" AFF TO CENTER OF DEVICE.
  - VENTILATOR OR FAN COIL UNIT OUTLET.
- BRANCH CIRCUIT EXPOSED.**
- BRANCH CIRCUIT CONCEALED IN FLOOR.**
- BRANCH CIRCUIT CONCEALED IN CEILING OR WALL.**
- HOME RUN TO PANEL - ARROWHEADS INDICATE CIRCUITS, WIRE INDICATED ARE GREEN GROUND, NEUTRAL AND THREE HOT LEGS (A DIFFERENT PHASE FOR EACH CIRCUIT) MAXIMUM THREE CIRCUITS PER CONDUIT. PROVIDE #12 THIN UNLESS OTHERWISE NOTED.**
- PHASE CONDUCTORS**
- NEUTRAL
  - GROUND
- ON RISERS, DESIGNATION DENOTES QUANTITY AND SIZES OF CONDUCTORS AND CONDUITS IN ACCORDANCE WITH THE PANEL FEEDER SCHEDULE.**
- WIRING SYSTEM BELOW FLOOR OR BELOW GRADE.**
- WIRING SYSTEM CONCEALED IN OR ABOVE CEILING OR IN WALL.**
- WIRING SYSTEM EXPOSED.**
- WIRING SYSTEM TURNED DOWN.**
- WIRING SYSTEM TURNED UP.**
- CONDUIT STUBBED INTO ACCESSIBLE CEILING SPACE.**
- PANELBOARD FLUSH MOUNTED.**
- PANELBOARD SURFACE MOUNTED.**
- PANELBOARD NAMING CONVENTION**
- A,B,C = LOCATION
  - 1,2,3 = FLOOR
  - H = 277/480 VOLT
  - L = 120/208 VOLT
  - M = MOTOR CONTROL CENTER
  - C = CRITICAL BRANCH
  - E = EQUIPMENT BRANCH
  - U = UNGROUNDED (ISOLATION) PANEL
  - BLANK = NORMAL BRANCH
- JUNCTION BOX OR PULL BOX. W = WEATHERPROOF.**
- JUNCTION BOX AND CONNECTION TO EQUIPMENT OR TERMINAL STRIPS.**
- CONNECTION TO EXHAUST FAN. COORDINATE EXACT LOCATION WITH MECHANICAL CONTRACTOR.**
- CONNECTION TO FAN COIL UNIT. COORDINATE EXACT LOCATION WITH MECHANICAL CONTRACTOR.**
- NON-FUSIBLE SAFETY SWITCH. NUMERAL INDICATES AMPERE RATING.**
- FUSED SAFETY SWITCH. NUMERAL INDICATES AMPERE RATING.**
- 208V, 3A, 0F-1, 10 HP. SPECIAL VOLTAGES AS SHOWN ON DRAWING.**
- 480V, 3A, 0F-1, 10 HP. HORSEPOWER RATING.**
- 120V, 1A, 0F-1, 10 HP. EQUIPMENT IDENTIFICATION.**
- NEC REQUIRED GROUND.**

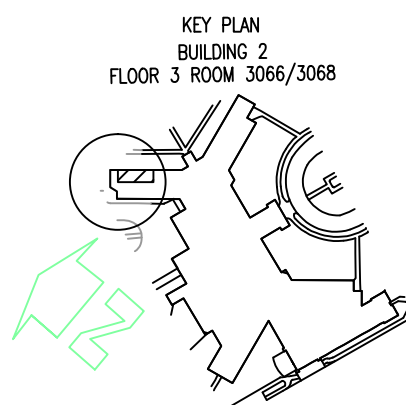
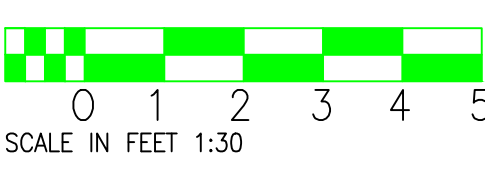

OUTLETS & ELECTRICAL CONNECTIONS FOR MEDICAL EQUIPMENT

SCALE IN FEET 1:30



KEY NOTES

- INSTALLATION OF NEW MECHANICAL ITEMS TO BE CONNECTED TO EMERGENCY POWER CIRCUIT
- DUPLEX ELECTRICAL OUTLET SHALL BE PROVIDED WITH UNIT FOR POWER CORD CONNECTION ABOVE CEILING.
- 15 FOOT POWER CORD SHALL BE PROVIDED WITH PUREFLO-FPM UNIT OR EQUIVALENT.
- CONTRACTOR TO VERIFY EXISTING CONDITIONS
- ELECTRICAL CONNECTIONS TO BE MADE AS PER S.O.W., DIAGRAMS, AND SPECIFICATIONS.
- REFER TO MECHANICAL DRAWING M-101 FOR DESCRIPTION AND LOCATION OF FUTURE MECHANICAL ITEMS IN RELATION TO ELECTRICAL DRAWINGS
- EXISTING CONDITIONS MAY VARY FROM DRAWINGS, CONTRACTOR TO KEEP REDLINE DRAWINGS OR NOTES OF DIFFERENT EXISTING CONDITIONS AND NEW WORKS.

Revision		Date						RECOMMEND APPROVAL				Drawing Title EXISTING ELECTRICAL-ISOLATION		Project Title ISOLATION & BARIATRIC RENAVATION Bldg. 2 Fl 3		Date 14 OCT 2011				Department of Veterans Affairs									
CHIEF OF SERVICE		Date		CHIEF OF STAFF		Date		ASSOC. DIR. PATIENT CARE SVC.		Date		ASSOC. DIR. for OPERATIONS		Date		Approved: Safety Manager/M&O Supervisor						Building Number BUILDING #2		Checked BLF		Drawn BLF		Project No. 659-12-001	
APPROVAL BY:		Date		MEDICAL CENTER DIRECTOR												Approved: Chief of Facilities Management Svr.		Location W.G.(BII) Hefner Medical Center 1601 Brenner Ave. Salisbury NC 28144											