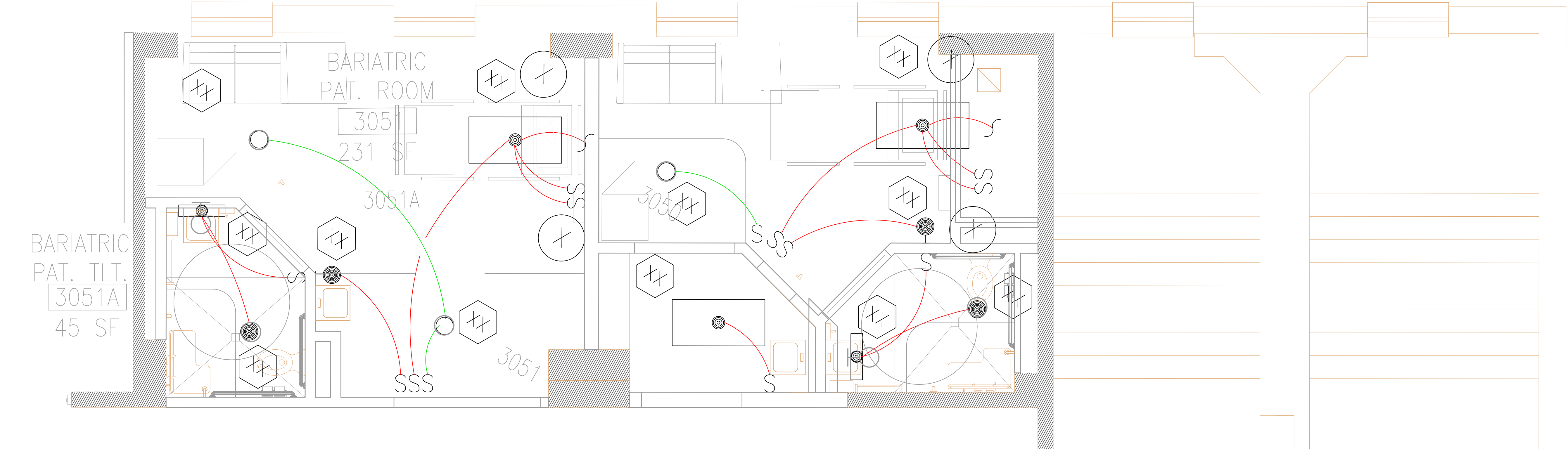


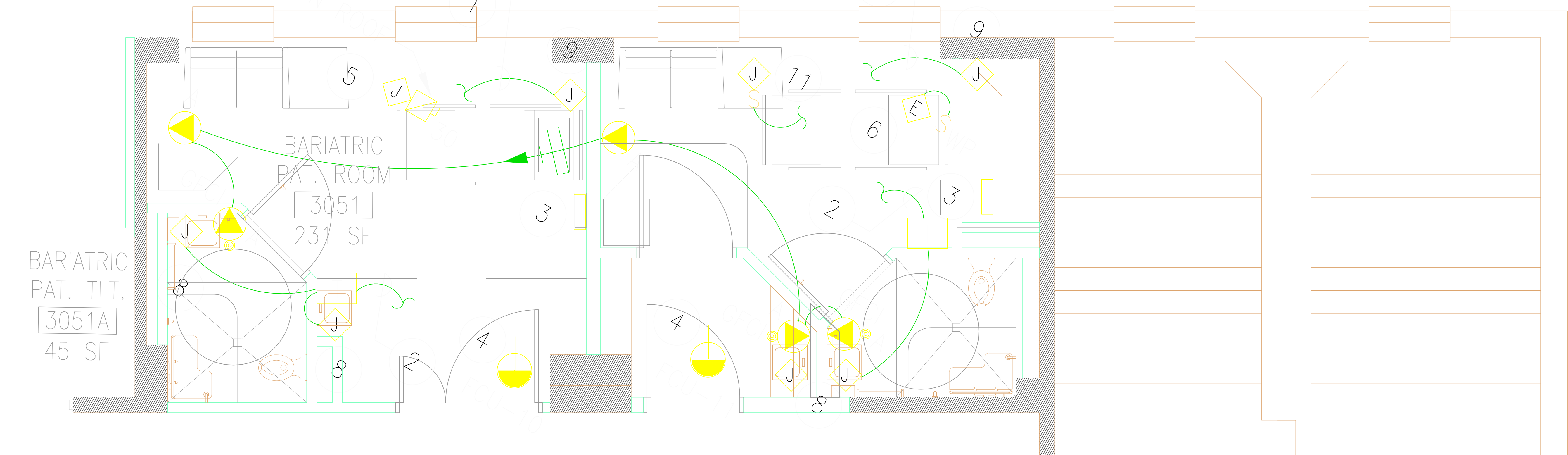
LIGHTING & ELECTRICAL CONNECTIONS

SCALE IN FEET 1:30



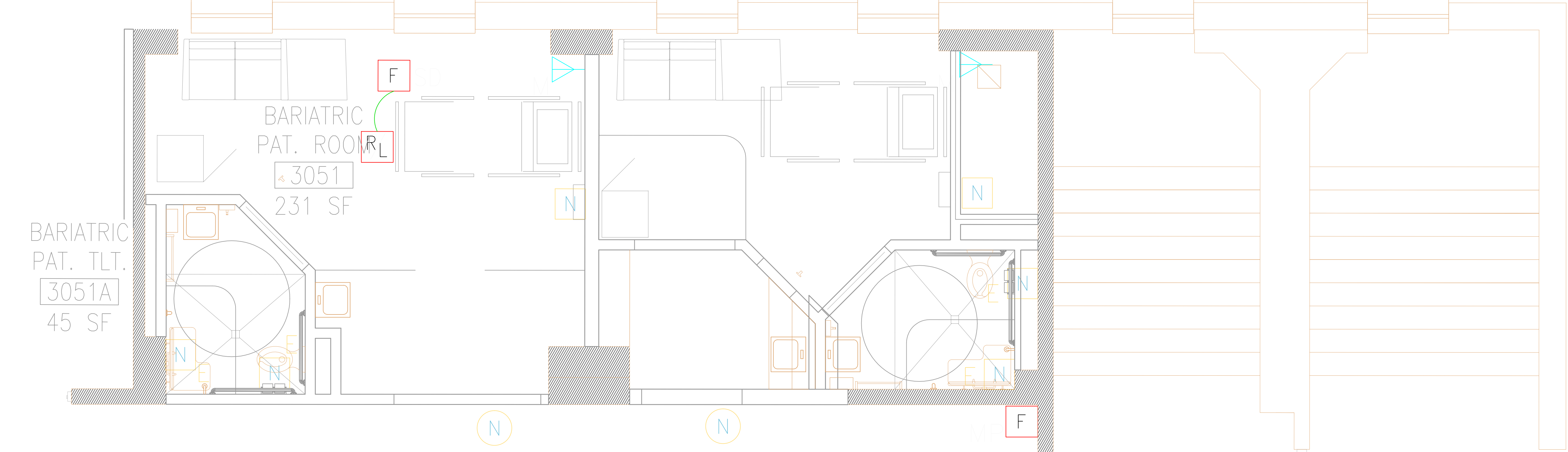
OUTLETS & ELECTRICAL CONNECTIONS

SCALE IN FEET 1:30



OUTLETS & ELECTRICAL CONNECTIONS FOR MEDICAL EQUIPMENT

SCALE IN FEET 1:30



LEGEND

ELECTRICAL SYMBOLS

- LIGHTING**
- (A) LIGHTING FIXTURE DESIGNATION. TYPICAL FOR ALL FIXTURES OF THE SAME SHAPE IN ROOM.
 - FLUORESCENT LIGHTING FIXTURE CEILING MOUNTED.
 - ◻ SHADED OUTLET INDICATES LIGHTING FIXTURE ON EMERGENCY CIRCUIT.
 - CEILING MOUNTED EXIT SIGN. PROVIDE NUMBER OF FACES AND CHEVRONS AS INDICATED ON DRAWINGS.
 - W = WALL MOUNTED. SEE LIGHTING FIXTURE SCHEDULE.
 - INCANDESCENT OR COMPACT FLUORESCENT LIGHTING FIXTURE CEILING MOUNTED.
 - INCANDESCENT OR COMPACT FLUORESCENT LIGHTING FIXTURE WALL MOUNTED ON EMERGENCY CIRCUIT.
 - ◻ FLUORESCENT LIGHTING FIXTURE WALL MOUNTED OR UNDER CABINET.
 - FLUORESCENT LIGHTING FIXTURE WALL MOUNTED OR UNDER CABINET ON EMERGENCY CIRCUIT.
- SWITCHES**
- S SINGLE POLE SWITCH, MOUNTED 44" AFF.
 - SS TWO SINGLE POLE SWITCHES IN A 2-GANG BOX, MOUNTED 44" AFF. PROVIDE DIVIDER FOR DIFFERENT VOLTAGES OR BRANCHES.
 - SSS THREE SINGLE POLE SWITCHES IN A 3-GANG BOX, MOUNTED 44" AFF. PROVIDE DIVISOR FOR DIFFERENT VOLTAGES OR BRANCHES.
 - SS TWO SINGLE POLE SWITCHES IN A 2-GANG BOX, MOUNTED 44" AFF. TO COMPLY WITH ENERGY CODE, EITHER SWITCH INBOARD AND OUTBOARD LAMPS SEPARATELY OR STEP-DIM BOTH LAMPS TO 50%.
- MODIFIERS FOR SWITCHES:**
- 3 = THREE WAY
 - 4 = FOUR WAY
 - DT = DIMMER
 - DT = DOUBLE THROW
 - LV = LOW VOLTAGE
 - OS = OCCUPANCY SENSOR
 - T = TIMER
 - 4-LEG = MULTIPLE SWITCH LEGS
- NOTE:** MOUNTING HEIGHT FOR THE FOLLOWING SWITCHES SHALL BE 40" (1016mm) AFF IN ELECTRICAL CLOSET, MECHANICAL ROOMS, MOUNTING HEIGHT SHALL BE 4'-6" (1372mm) AFF.
- S** DIMMER SWITCH - WITH SILICON CONTROLLED RECTIFIER.
- S** ROCKER TYPE SWITCH.
- NOTE:** MOUNTING HEIGHT FOR THE FOLLOWING SWITCHES SHALL BE 4'-6" (1372mm) AFF UNLESS OTHERWISE NOTED.

ELECTRICAL SYMBOLS

- COMMUNICATIONS**
- ◻ OUTLET FOR TV MONITOR (CCTV SYSTEM), CONSISTS OF 120V, 20A BRANCH CIRCUIT FROM NORMAL POWER SYSTEM (SEE E-2038) AND LOW-VOLTAGE TV CABLE IN 3/4" TO EXISTING HEADEND.
 - ◻ VOICE/DATA OUTLET, WALL MOUNTED 18" AFF.
- FIRE ALARM**
- ◻ FIRE ALARM MANUAL PULL STATION, 44" AFF.
 - ◻ FIRE ALARM CHIME & VISUAL ALARM SIGNAL, WALL MOUNTED 80" AFF.
 - ◻ SMOKE DETECTOR DUCT TYPE.
 - ◻ FIRE ALARM CEILING MOUNTED REMOTE INDICATING LIGHT. W = WALL MOUNTED 12" BELOW CEILING.
- NURSE CALL**
- NCS NURSE'S CALL MASTER STATION MTD ON NURSE'S COUNTER TOP UNLESS OTHERWISE NOTED.
 - NCT NURSE CALL TERMINAL CABINET.
 - NT NURSE'S CALL STATION - MTD 6'-0" (1830 MM) AFF FOR SHOWER LOCATION MTD 4'-6" (1400 MM) AFF FOR TUB LOCATION MTD 5'-0" (1515 MM) AFF FOR TOILET LOCATION.
 - ND NURSE'S CALL DUTY STATION. MTD 5'-0" (1530 MM) AFF UNLESS NOTED OTHERWISE.
 - NI NURSE'S CALL STATION, MTD 5'-0" (1530 MM) AFF UNLESS OTHERWISE NOTED. (PATIENT STATION)
 - NU UTILITY CALL STATION, MTD 5'-0" (1530 MM) AFF UNLESS OTHERWISE NOTED.

ELECTRICAL SYMBOLS

- ELECTRICAL STRIP MOLD (OUTLETS ON 2'-0" (610mm) CENTERS OR AS DESIGNATED ON DRAWINGS), MTD 3'-6" (1067mm) AFF OR AS INDICATED.**
- 120V, 20A, 1 PHASE, 2-POLE, 3W, NEMA 5-20R, MOUNTED 18" AFF TO CENTER OF DEVICE.
 - LOCATE RECEPTACLE 44" AFF TO CENTER OF DEVICE.
 - TWO(2) 120V, 20A, 14, 2-POLE, 3-WIRE, NEMA 5-20R IN 2-GANG BOX MOUNTED 18" AFF TO CENTER OF DEVICE.
 - VENTILATOR OR FAN COIL UNIT OUTLET.
- BRANCH CIRCUIT EXPOSED.**
- BRANCH CIRCUIT CONCEALED IN FLOOR.**
- BRANCH CIRCUIT CONCEALED IN CEILING OR WALL.**
- HOME RUN TO PANEL - ARROWHEADS INDICATE CIRCUITS. WIRE INDICATED ARE GREEN GROUND, NEUTRAL AND THREE HOT LEGS (A DIFFERENT PHASE FOR EACH CIRCUIT) MAXIMUM THREE CIRCUITS PER CONDUIT. PROVIDE #12 THIN UNLESS OTHERWISE NOTED.**
- PHASE CONDUCTORS**
- NEUTRAL
 - GROUND
- ON RISERS, DESIGNATION DENOTES QUANTITY AND SIZES OF CONDUCTORS AND CONDUITS IN ACCORDANCE WITH THE PANEL FEEDER SCHEDULE.**
- WIRING SYSTEM BELOW FLOOR OR BELOW GRADE.**
- WIRING SYSTEM CONCEALED IN OR ABOVE CEILING OR IN WALL.**
- WIRING SYSTEM EXPOSED.**
- WIRING SYSTEM TURNED DOWN.**
- WIRING SYSTEM TURNED UP.**
- CONDUIT STUBBED INTO ACCESSIBLE CEILING SPACE.**
- PANELBOARD FLUSH MOUNTED.**
- PANELBOARD SURFACE MOUNTED.**
- PANELBOARD MARKING CONVENTION**
- A,B,C = LOCATION
 - 1,2,3 = FLOOR
 - H = 277/480 VOLT
 - L = 120/208 VOLT
 - M = MOTOR CONTROL CENTER
 - U = LIFE SAFETY BRANCH
 - C = CRITICAL BRANCH
 - E = EQUIPMENT BRANCH
 - U = UNGROUNDED (ISOLATION) PANEL.
 - BLANK = NORMAL BRANCH
- JUNCTION BOX OR PULL BOX. W = WEATHERPROOF.**
- JUNCTION BOX AND CONNECTION TO EQUIPMENT OR TERMINAL STRIPS.**
- CONNECTION TO EXHAUST FAN. COORDINATE EXACT LOCATION WITH MECHANICAL CONTRACTOR.**
- CONNECTION TO FAN COIL UNIT. COORDINATE EXACT LOCATION WITH MECHANICAL CONTRACTOR.**
- NON-FUSIBLE SAFETY SWITCH. NUMERAL INDICATES AMPERE RATING.**
- FUSED SAFETY SWITCH. NUMERAL INDICATES AMPERE RATING.**
- 208V, 34 = MOTOR CONNECTION. SPECIAL VOLTAGES AS SHOWN ON DRAWING. 480V, 34 = EFF-1, 1D HP.**
- 120V, 14 = HORSEPOWER RATING EQUIPMENT IDENTIFICATION**
- NEC REQUIRED GROUND.**

KEY NOTES:

RELOCATION OF EXISTING ELECTRICAL ITEMS ARE TO BE TRACKED BY REDLINE DRAWING OR NOTED.

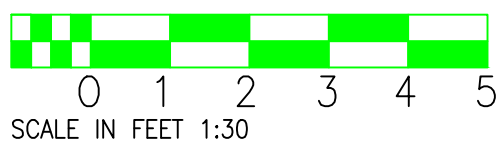
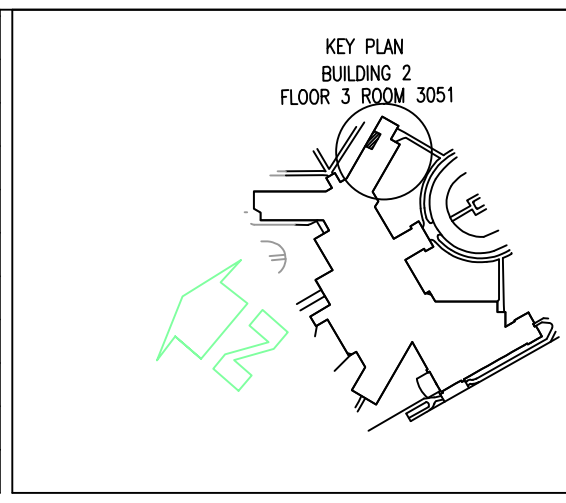
INSTALLATION OF NEW ELECTRICAL ITEMS ARE TO BE TRACKED BY REDLINE DRAWINGS OR NOTED AND INSTALLED AS PER SPECIFICATIONS

CONTRACTOR TO VERIFY EXISTING CONDITIONS

ELECTRICAL CONNECTIONS TO BE MADE AS PER S.O.W., DIAGRAMS, AND SPECIFICATIONS.

REFER TO DRAWING A-102 AND A-103 FOR LOCATION OF NEW WALLS AND FIXTURES

Revision	Date



RECOMMEND APPROVAL			
REQUESTER	Date	CHIEF OF STAFF	Date
CHIEF OF SERVICE	Date	CHIEF OF STAFF	Date
ASSOC. DIR. PATIENT CARE SVC.	Date	ASSOC. DIR. for OPERATIONS	Date
APPROVAL BY:		Date	
MEDICAL CENTER DIRECTOR			

Drawing Title	EXISTING ELECTRICAL-BARIATRIC
Approved: Safety Manager/M&O Supervisor	
Approved:Chief of Facilities Management Svr.	

Project Title	ISOLATION & BARIATRIC RENAVATION Bldg. 2 Fl 3
Building Number	BUILDING #2
Location	W.G.(BII) Hafner Medical Center 1601 Brenner Ave. Salisbury NC 28144

Date	14 OCT 2011
Project No.	659-12-001
DRAWING NO.	E-102
DWG. 6 OF 11	



Department of Veterans Affairs