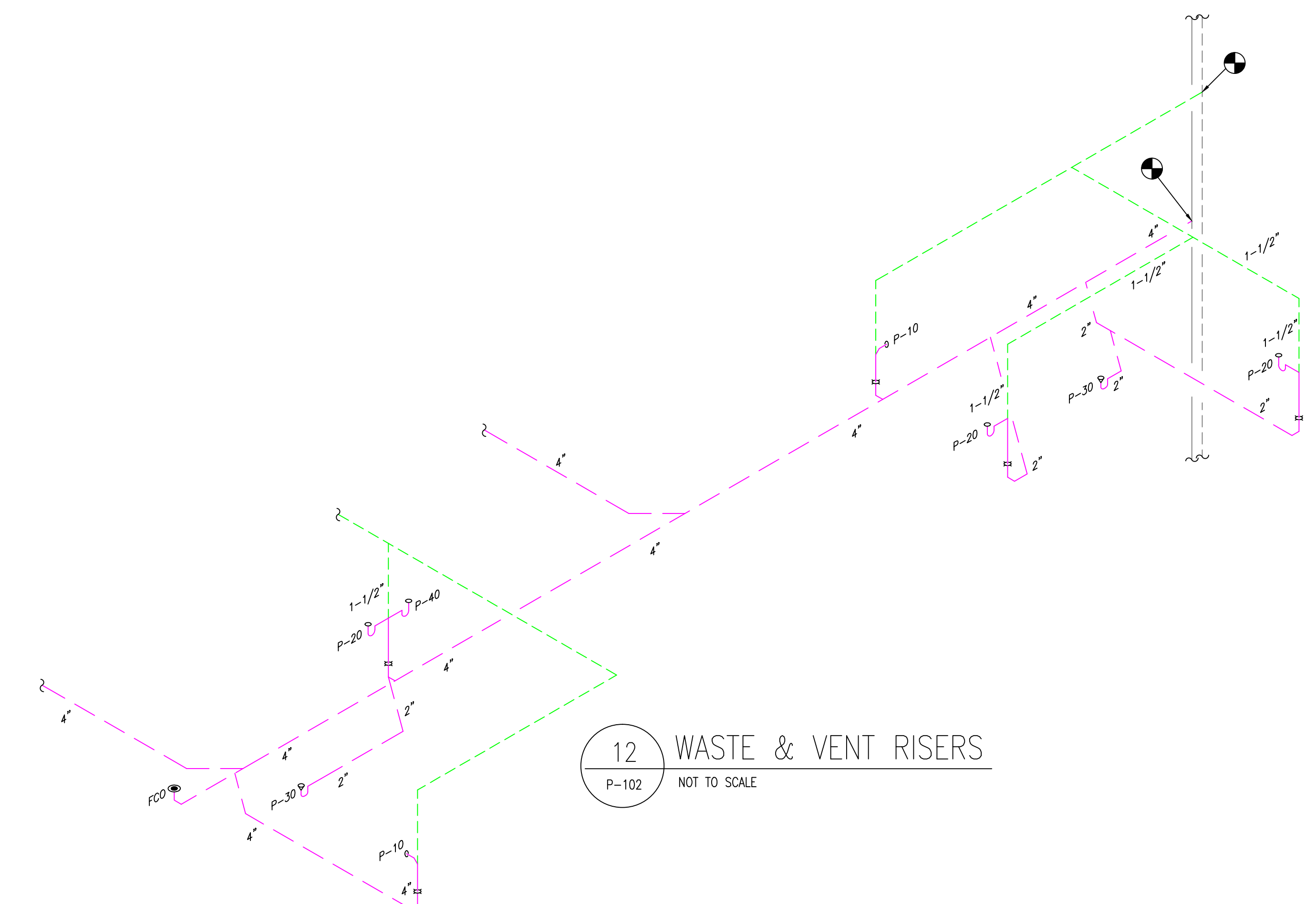
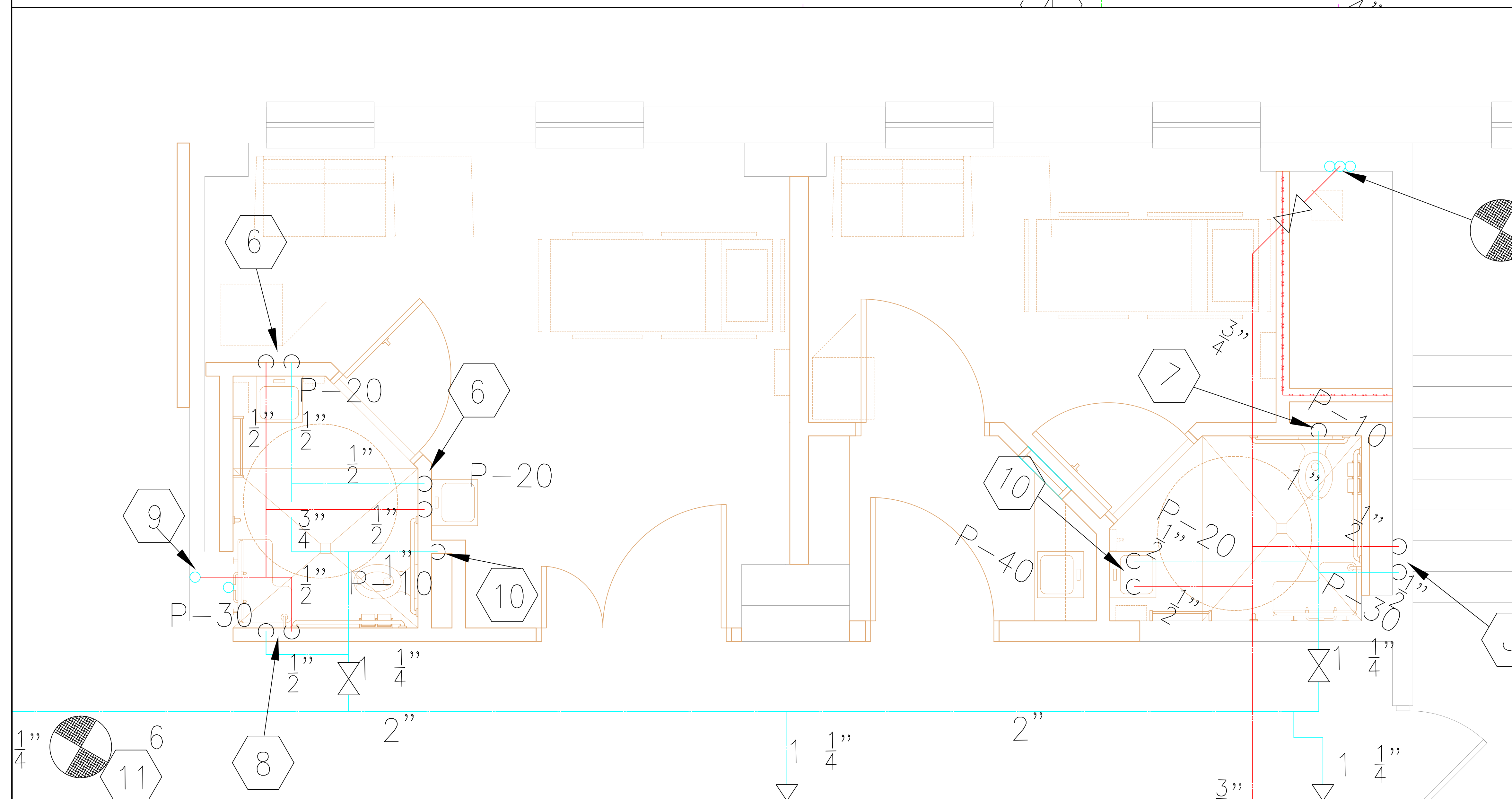
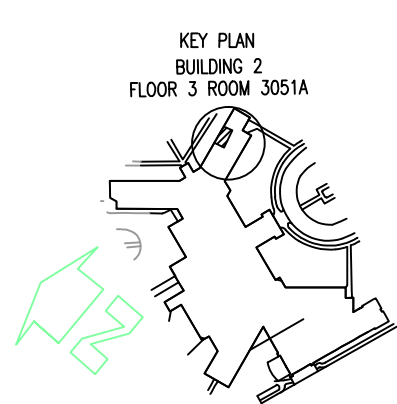


- 1 2" WASTE DOWN, 1-1/2" VENT RISE, ROUGH-IN AND CONNECTED TO LAVATORY.
- 2 4"WASTE DOWN, 2" VENT RISE, ROUGH-IN AND CONNECTED TO WATER CLOSET.
- 3 4"WASTE AND 2" VENT TO EXISTING 4"WASTE AND 3" VENT STACKS.
- 4 2" WASTE DOWN, 1-1/2" VENT RISE, ROUGH-IN AND CONNECTED TO SINK AND LAVATORY.
- 5 2"WASTE, ROUGH-IN AND CONNECTED TO SHOWER DRAIN.
- 6 1/2" HW & 1/2" CW DOWN, ROUGH-IN AND CONNECTED TO LAVATORY.
- 7 1" CW DOWN WITH SA-A SHOCK ARRESTER, ROUGH-IN AND CONNECTED TO WATER CLOSET.
- 8 1/2"HW & 1/2" CW DOWN, ROUGH-IN AND CONNECTED TO SHOWER TRIM.
- 9 CONNECTED 1/2" HW TO EXISTING 1/2" HW RISER. PROVIDE WITH SHUT-OFF VALVE.
- 10 1/2"HW & 1/2" CW DOWN, ROUGH-IN AND CONNECTED TO SINK AND LAVATORY.
- 11 CONNECTED 3/4"HW TO EXISTING 3/4" HW RISER. PROVIDE WITH SHUT-OFF VALVE.

[illegible]

RECOMMEND		APPROVAL	
REQUESTER	Date		
CHIEF OF SERVICE	Date	CHIEF OF STAFF	Date
ASSOC. DIR. PATIENT CARE SVC.	Date	ASSOC. DIR. for OPERATIONS	Date
APPROVAL BY: MEDICAL CENTER DIRECTOR			Date

e	Drawing Title
e	EXISTING PLUMBING--BARIATRIC
e	Approved: Safety Manager/M&O Supervisor
e	Approved: Chief of Facilities Management Svr.

Project Title		
ISOLATION & BARIATRIC RENOVATION Bldg. 2 Fl 3		
Building Number BUILDING # 2	Checked	Drawn BLF
Location W.G.(Bill) Hefner Medical Center 1601 Brenner Dr Salisbury NC 28144		

Date 14 OCT 2011
Project No. 659-12-001
DRAWING NO. P-102
DWG. 10 OF 11

Department of
Veterans Affairs