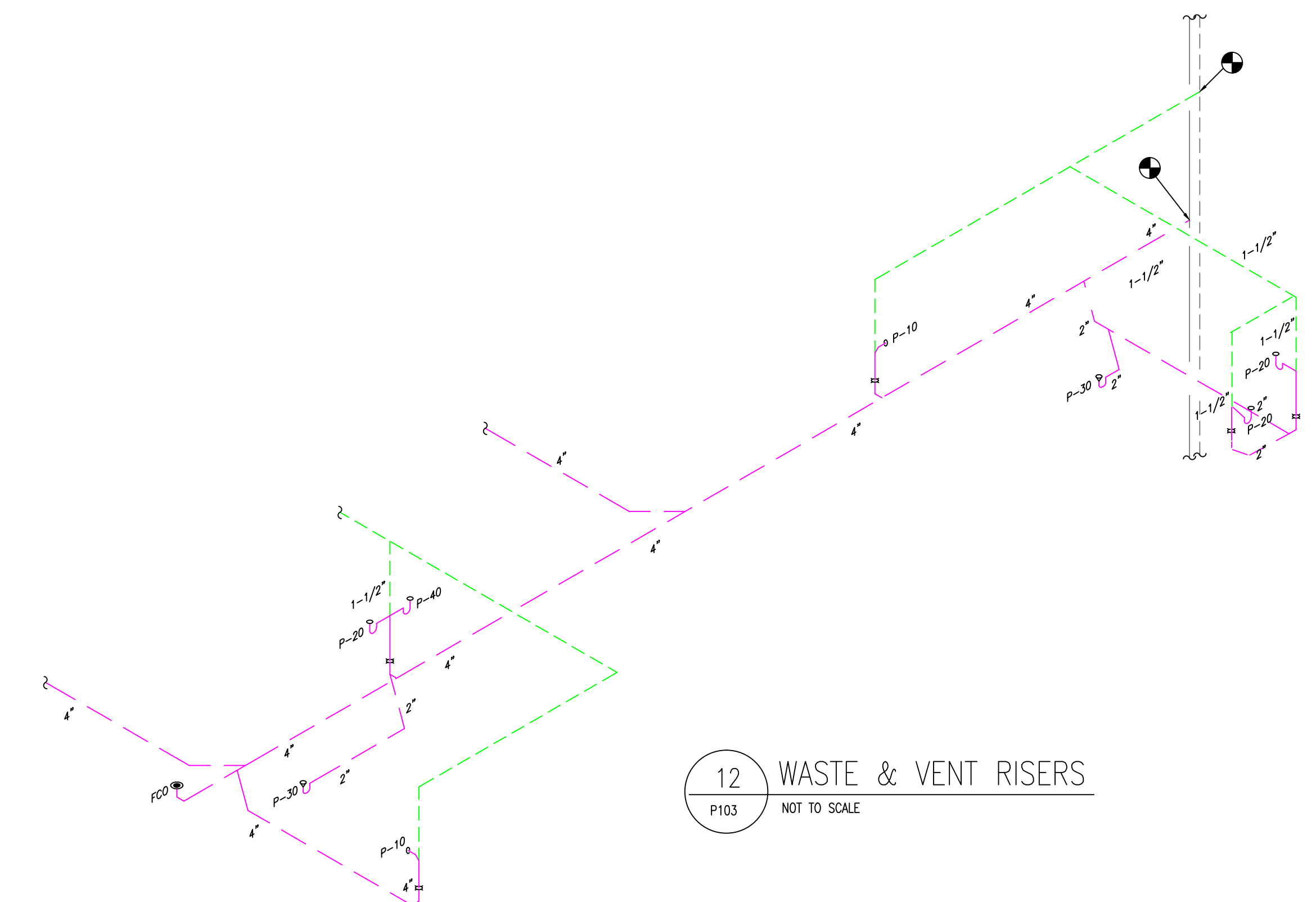


-
- The diagram illustrates the piping system for a Bariatric Patient Room. Key components and labels include:
- Room Labels:** "BARIATRIC PATIENT ROOM" (top left), "BARIATRIC PATIENT ROOM" (center), and "PATCH FLOOR REMOVE-BUILD UP" (bottom right).
 - Equipment and Valves:**
 - P-20:** Two pressure points or pumps, one near the top center and one near the center left.
 - P-30:** A pressure point or pump near the bottom left.
 - P-10:** A pressure point or pump near the bottom center.
 - P-40:** A pressure point or pump near the bottom right.
 - Valves:** Indicated by 'X' symbols on the piping lines.
 - Flow Paths and Dimensions:**
 - Flow paths are color-coded: red, blue, and green.
 - Dimensions are noted: "2\"", "1 1/4\"", "3/4\"", and "2 1/2\"".
 - Other Labels:**
 - 6:** A hexagonal label pointing to a component near the top center.
 - 7:** A hexagonal label pointing to a component near the bottom right.
 - 8:** A hexagonal label pointing to a component near the bottom center.
 - 9:** A hexagonal label pointing to a component near the bottom left.
 - 10:** A hexagonal label pointing to a component near the bottom left.
 - 11:** A hexagonal label pointing to a component near the bottom left.
 - 2:** A hexagonal label pointing to a component near the top right.

[illegible]