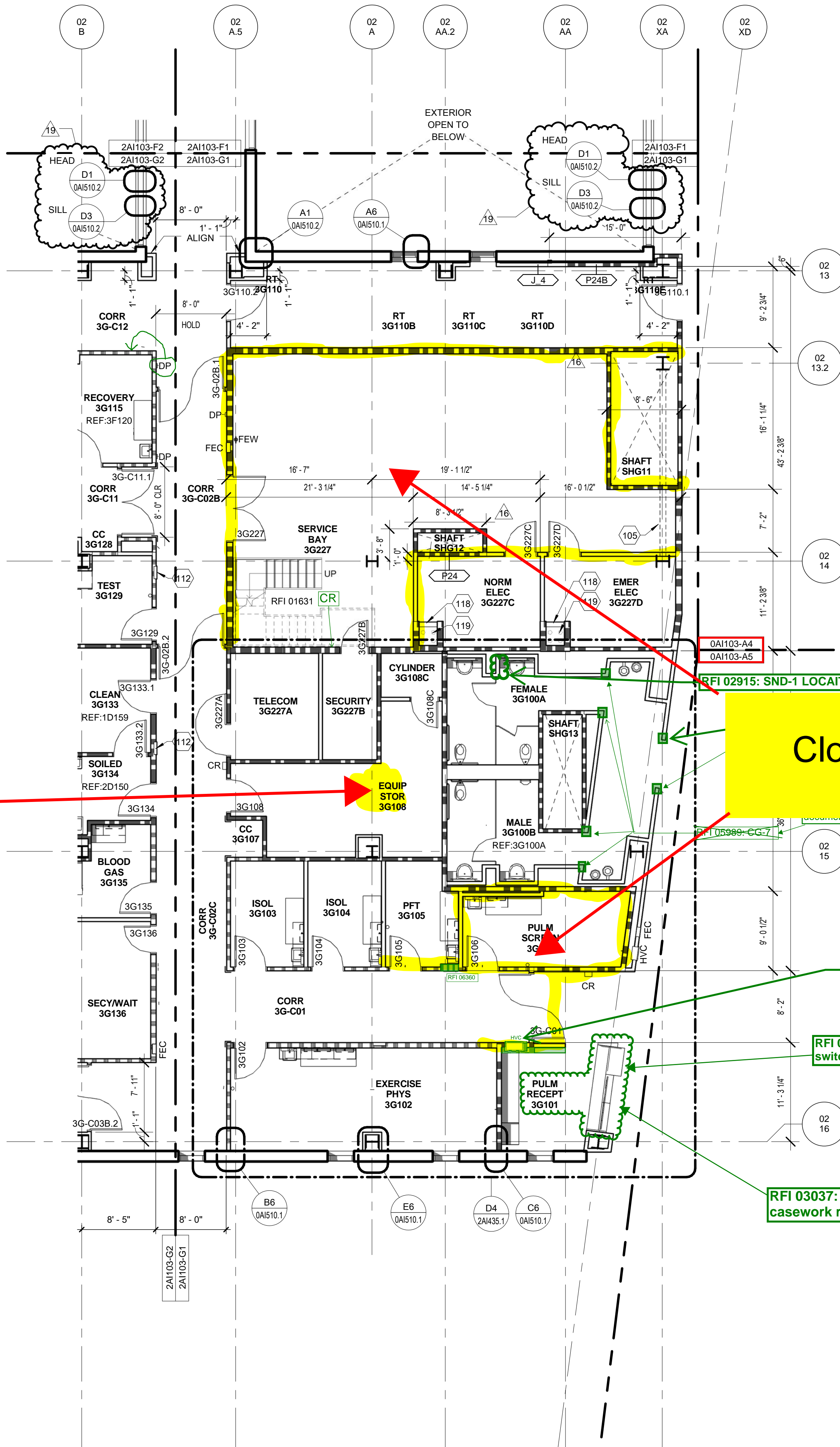


All noted PD's & CR's on this page were either added, removed, clarified or relocated per RFI 04695

REFER TO THE FOLLOWING SKETCH FOR CHANGES:
SK-8-4-NJ 2A1003



1 BLDG 2 THIRD FLOOR PLAN - AREA G1
SCALE: 1/8" = 1'-0"

2A103-G1
0A103-A5

INTERIOR BACK-UP WALL, OPENINGS, SOFFITS, ETC
AROUND PERIMETER OF BUILDING REVISED TO
COORDINATE W/ ENVP-08 SKIN COST REDUCTIONS. NEW
AND/OR REVISED PLAN/SECTION/RCP DETAILS AS
INDICATED ON PLANS AND REFLECTED CEILING PLANS.

FLOOR PLAN LEGEND

NOT ALL SYMBOLS/NOTES APPEAR ON EVERY SHEET

WHERE SYMBOL REFERENCES ANOTHER DRAWING SERIES,
SYMBOL IS SHOWN FOR DESIGN/DIMENSIONAL COORDINATION
ONLY. REFERENCE THE ENGINEERING DRAWINGS FOR FULL
SCOPE OF DEVICE LOCATIONS & ASSOCIATED SPECIFICATIONS.

GENERAL FLOOR PLAN ANNOTATION

10123 ROOM NUMBER
REF:XXXX
REFERENCE ROOM NUMBER:
REFERENCE ROOM NUMBER INDICATES ROOM TO
REFERENCE FOR TYPICAL MEDICAL EQUIPMENT LAYOUT,
INTERIOR ELEVATION TAGS, GENERAL ANNOTATION AND
DIMENSIONS UNLESS OTHERWISE NOTED.

INTERIOR ELEVATION REFERENCE:

A
B
C
D
INTERIOR ELEVATION CALLOUT
SHEET ON WHICH ELEVATION IS DRAWN

XAI10X
XAI10Y
MATCHLINE REFERENCE

CENTERLINE TAG

EL: +10'-0"

XXXX PARTITION TYPE TAG - REF PARTITION SCHEDULE SHT 0A1002

(1X) RELITE TAG - REF FRAME SCHEDULE SHEET 0A1000

XXXXX DOOR TAG - REF DOOR SCHEDULES A1000 SERIES

FLOOR SYMBOLS

FD FLOOR DRAIN - REF PLUMBING DWGS
WHERE DRAIN IS NOT SET IN DEPRESSIONED SLAB/SLOPED
FLOOR SYSTEM, SET DRAIN 1/2" BELOW FINISH FLOOR
LEVEL, AND TAPER CONC. AND FLOORING TO FLUSH W/
DRAIN STRAINER IN A 2' RADIUS FROM CENTER OF DRAIN

FCO FLOOR CLEAN OUT - REF PLUMBING DWGS
NOTE: CMHP TO COORD REVISIONS TO SERVICE BAY FDS & FCO'S
(QTY & LOCATIONS) W/ APPROVED AHJ RE-DESIGN SHOP DWGS

FLOOR OUTLET - REF ELECTRICAL DWGS

WALL DEVICE/CABINET SYMBOLS

CR CARD READER - REF LOW VOLTAGE DWGS
DP DOOR PUSH PLATE - REF LOW VOLTAGE DWGS
PB PANIC ALARM BUTTON - REF LOW VOLTAGE DWGS
IA INFORMATION ASSIST CALL BOX - REF LOW VOLTAGE DWGS
FAPS FIRE ALARM PULL STATION - REF FIRE ALARM DWGS
10.44.13 FIRE EXTINGUISHER CABINETS
FEC RECESSED CABINET SIZED TO HOLD 10# ABC EXTINGUISHER
FEC.20 RECESSED CABINET SIZED TO HOLD 20# CO2 EXTINGUISHER
FEW WALL MOUNTED EXTINGUISHER LOCATION
HVC FIRE DEPARTMENT HOSE VALVE CABINET - REF FIRE PROT. DWGS

MISCELLANEOUS

EXX-X 07.95.13 INTERIOR EXPANSION JOINT COVER ASSEMBLY -
"XX" LETTER DESIGNATION INDICATES COVER TYPE PER SHEET
0A1517. REFERENCE FIRE/SMOKE RATED CONDITIONS AS
INDICATED BY ASSOCIATED PTN TYPES ON THE FLOOR PLANS.

LKR-XX LOCKERS: "XX" DESIGNATION INDICATES TYPE:
2A - 10.51.13 DBL TIER METAL LOCKERS, SLOPED TOP
12"W X 15"D X 60"H
LOCKERS PAINTED TO MATCH ADJ WALL
REF DTL E20A532
2A.1 - 10.51.13 DBL TIER METAL LOCKERS, SLOPED TOP
12"W X 15"D X 60"H
LOCKERS PAINTED TO MATCH ADJ WALL
REF DTL E20A532
2B - 10.51.21 DBL TIER "Z" PLAM LOCKERS, W/ PLAM SOFFIT
12"W X 15"D X 80"H
FINISH: PLAM-10
REF DTL E20A532
TOPS OF LOCKERS TO ALIGN AT 7'-0" AFF.

FOR REFERENCE ONLY - GENERAL LOCATION OF OPEN OFFICE
FURNITURE - SEE FURNITURE DWGS FOR EXACT TYPES AND
LOCATIONS.

SHIELDING

SEE SHIELDING DETAILS/SCHEDULES ON SHEET 0A1514
LEAD SHIELDING
RF RADIOFREQUENCY SHIELDING
EMI ELECTROMAGNETIC INTERFERENCE SHIELDING
MAG MAGNETIC SHIELDING

MEDICAL EQUIPMENT/OFFICE EQUIPMENT

XX1234 DASHED OBJECTS WITH EQUIPMENT TAG INDICATE
MEDICAL/OFFICE EQUIPMENT. REFERENCE EQUIPMENT
ACTIVATION REPORT. SEE SPECIFICATIONS SECTION
01.11.10 FOR LOCATION OF REPORT.

TOILET GRAB BAR CONFIGURATIONS

TOILET WITH WALL MOUNTED GRAB BARS
10.28.00
SEE SHEET 0A1201 FOR GRAB BAR MOUNTING
HEIGHTS AND DIMENSIONAL LAYOUT
TOILET WITH WALL MOUNTED UP-SWING GRAB BARS
10.28.00
SEE SHEET 0A1201 FOR GRAB BAR MOUNTING
HEIGHTS AND DIMENSIONAL LAYOUT

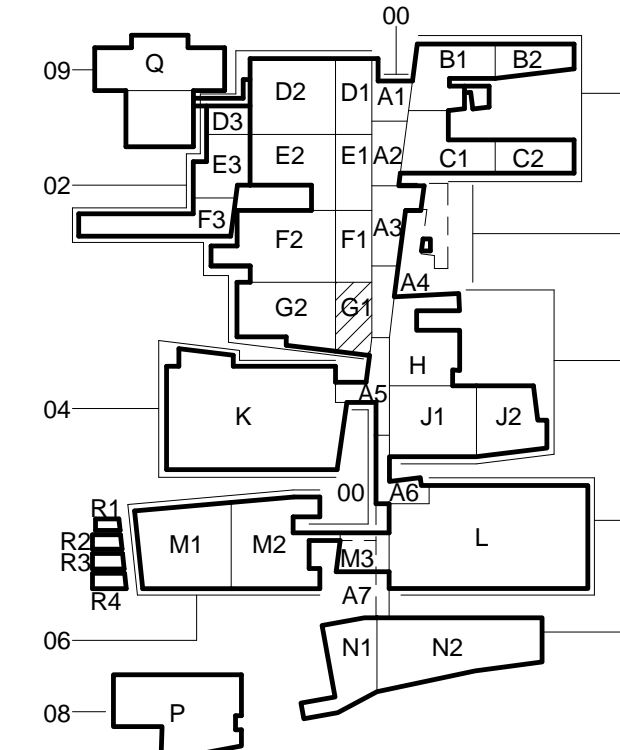
GENERAL FLOOR PLAN NOTES

- REFER TO SHEET 0A1002 FOR PARTITION SCHEDULE AND GENERAL
PARTITION TYPE NOTES
- REFER TO A1000 SERIES FOR ENLARGED FLOOR PLAN VIEWS INCLUDING
MEDICAL EQUIPMENT NOT SHOWN IN A1000 SERIES PLANS
- REFER TO LIFESAFETY DRAWINGS (LS SERIES) FOR CAMPUS-WIDE
SCOPE OF RATED WALL CONSTRUCTION, SMOKE PARTITIONS, SUITE
DESIGNATIONS AND EXIT DISCHARGE INFORMATION
- PARTITION TYPES AS NOTED BY THE SYMBOL CONTINUE BETWEEN
ROOM/SPACE CORNERS OR ANY INTERSECTING PARTITION
- DIFFERING PARTITION TYPES SHALL ALIGN SO THAT WALL PLANES
CONTINUE UNBROKEN WITHIN/CROSS ROOMS AND/OR SPACES,
UNLESS OTHERWISE NOTED. DIMENSIONS ARE TO FINISH FACE
- REFER TO A1000 SERIES DRAWINGS FOR DOOR & RELITE SCHEDULES.
DISTANCE FROM HINGE SIDE OF DOOR TO INTERSECTING STUD WALL
SHALL BE 4" UNLESS NOTED OR DETAILED OTHERWISE (MEASURED
FROM OUTSIDE OF FRAME)
- CONTRACTOR SHALL VERIFY ALL DIMENSIONS NOTED AS "CLEAR" OR
"MIN". DIMENSIONS NOTED AS "HOLD" ARE CRITICAL TO COORDINATE
OTHER WORK (E.G. CEILING GRIDS, LIGHTING, FINISHES).
- CONTRACTOR SHALL VERIFY ALL DIMENSIONS PRIOR TO INITIATING
CONSTRUCTION AND REPORT DISCREPANCIES TO ARCHITECT PRIOR
TO COMMENCING WORK.
- CONTRACTOR SHALL PROVIDE ALL BLOCKING REQUIRED TO ANCHOR
ALL WALL AND CUS MOUNTED ITEMS, INCLUDING BUT NOT LIMITED TO
TOILET ROOM ACCESSORIES, MILLWORK, CASEWORK, HANDRAILS,
DOOR STOPS ETC. ...
- FIRE STOPPING SYSTEMS - REFER TO SPEC SECTION 07.94.00 FOR INFO
REGARDING PENETRATIONS OF ALL RATED ASSEMBLIES (BOTH SINGLE
AND DOUBLE MEMBRANE PENETRATIONS) INCLUDING BUT NOT LIMITED
TO PENETRATIONS FOR DUCTWORK, CONDUIT, PIPING AND SUPPORT
FOR WALL MOUNTED EQUIPMENT, CABINETS AND COUNTERTOPS.
- UP-SWING GRAB BAR WALL SLOPPED - SEE DTL S C3 AND A3 SHEET
0A1506 FOR TUBE STEEL BACKING AT ALL UP-SWING GRAB BARS.
SEE DETAIL A3.0A1516 FOR COLUMN BASE WATERPROOFING AT
EXPOSED COLUMNS IN SERVICE BAYS & MECHANICAL ROOMS.
- SHIELDING REQUIREMENTS - VERIFY ALL SHIELDING REQUIREMENTS
WITH FINAL EQUIPMENT SELECTIONS AND A VA APPROVED
REGISTERED PHYSICIST PRIOR TO COMMENCING WORK IN SHIELDED-
ROOM AREAS.
- HOUSEKEEPING AND COPY ROOMS - ALL PARTITIONS TO BE FULL
HEIGHT TO UNDERSIDE OF DECK/INTERSTITIAL ABOVE. SEE PARTITION
TYPE NOTES SHEET 0A1002.
- AT PARTIAL HEIGHT CMU PARTITIONS WITH GYPSUM WALLBOARD
ABOVE TO STRUCTURE ALIGN FACE OF GWB AND CMU AT SIDE OF
MAJOR CORRIDORS. ALL OTHER LOCATIONS CENTER GWB ON CMU
WALL UNLESS NOTED OTHERWISE

FLOOR PLAN SHEET NOTES

- FLOOR PLAN SHEET NOTE SERIES BEGINS WITH NOTE 100
NOT ALL SHEET NOTES APPEAR ON EVERY SHEET
- SLAB OPENING - REF STRUCTURAL DWGS
- ALIGN PARTITIONS
- LINE OF CURTAIN WALL SILL - REF EXTERIOR SERIES DWGS
- LINE OF HOISTWAY BELOW
- AIR HANDLER UNIT - REF MECHANICAL DWGS
- STEEL BRACING - REF STRUCTURAL DWGS
- CONCRETE HOUSEKEEPING PAD - REF STRUCTURAL DWGS
- ACCORDIAN FIRE DOOR - REF DOOR SCHEDULE
- NOT USED
- 08.31.13 FLOOR VAULT DOOR - 36" X 36" - REF DTL E1.0A1516
- ROOF/OVERFLOW DRAIN LEADER - REF PLUMBING DWGS
- ELECTRICAL PANEL - REF ELECTRICAL DWGS
- MEDICAL GAS ZONE VALVE BOX/MEDICAL GAS ALARM PANEL - REF
MED GAS DWGS
- SLOPE FLOORING IN SHOWER/TOILET ROOM TO FLOOR DRAIN
- SLAB RECESS FOR HIGH DENSITY SHELVING TRACK. VFY RECESS
DIMENSION W/ SHELVING MANUFACTURER.
- 14.91.34 TRASHLINEN CHUTE & STATION: SEE DETAIL S E6.0A1507
- 14.91.34 TRASHLINEN CHUTE: NO LOADING STATION
- 14.91.34 TRASHLINEN CHUTE: PROVIDE SLEEVES @ LEVEL 01 FLOOR
SLAB PENETRATION - SEE DETAILS E6.0A1507
- 08.31.13 3-HOUR FIRE RATED ACCESS PANEL - 24" X 48"
- ELECTRICAL RISERS - SEE PLAN DETS ON F5.0A1512 - REF ELEC DWGS
- CONCRETE ENCASED ELECTRICAL FEEDERS ABOVE - REF
STRUCTURAL & ELEC DWGS
- 02.27.02 GLASS FIBER REINFORCED GYPSUM COLUMN COVER -
36" O.D. UON
- BOLD DASHED LINE INDICATES ROUTE OF STRUCTURAL EXPANSION
JOINT - REF STRUCTURAL DWGS. REFERENCE FLOOR PLAN LEGEND
FOR INTERIOR EXPANSION JOINT COVER ASSEMBLY INFORMATION.
- 10.11.00 MARKER BOARD REF INTERIOR ELEV SHEET NOTE 207.
- 10.11.00 TACK BOARD REF INTERIOR ELEV SHEET NOTE 208.
- 10.28.00 FOLD-DOWN BENCH
- 10.28.00 FOLD-DOWN SHOWER SEAT
- SLAB RECESS FOR WALK-OFF GRILLE. VFY RECESS DIMENSION W/
GRILLE MANUFACTURER. SEE FLOOR FINISH PLANS FOR EXTENTS.
- PLUMBING ROUGH-IN FOR FUTURE SINK - REF PLUMBING DWGS.
- BENT PLATE W/ TRAFFIC COATING WRAP @ WALL BASE - REF
E3.0A1516
- LINE OF 2-HR RATED SHAFT ABOVE. REF DETAILS E1 & E3 SH1 0A1507
- 05.05.00 ACCESS LADDER
- 10.33.13 WIRE MESH PARTITION
- 05.52.13 PIPE AND TUBE RAILING
- 11.13.00 MANUAL DOCK LEVELER AND BUMPERS
- 13.44.00 MODULAR MEZZANINES INCL. STAIRS & WIRE MESH PTNS.
- 05.50.00 METAL GRATE CATWALK
- WALL MOUNTED HAND SINK - REF PLUMBING DWGS
- RECESSED EMERGENCY SHOWER AND EXPOSED STAINLESS STEEL
SHOWER HEAD - REF PLUMBING DWGS
- 08.39.19 FLOOD BARRIERS: FLOOD PLANK SYSTEM - REF D5.0A1511
- CONC. WALLS @ L 01 ELEV SHAFTS - REF STRUCT DWGS & DTL
02.0A1507
- BENT PLATE W/ PEDESTRIAN TRAFFIC COATING WRAP - REF C3.0A1516
- PLENUM SYSTEM - SEE EXTERIOR DRAWINGS
- CENTER PARTITION ON MULLION
- CENTER PARTITION ON MULLION
- 10.21.13 TOILET PARTITIONS
- TOP OF SHAFT LID ASSEMBLY - REF DETAIL B4.0A1507
- CONC CURB W/ PEDESTRIAN TRAFFIC COATING WRAP - REF D3.0A1516
- LIGHTING INVERTER CABINET - REF ELEC DWGS
- ELEVATOR SUMP PUMP CONTROL PANEL - REF PLUMB DWGS
- ALIGN GYPSUM WALL ABOVE WITH THIS FACE OF CMU

KEY PLAN



PLAN
NORTH

CONSTRUCTION DOCUMENTS 1
FULLY SPRINKLERED

CONSULTANTS:

DESMAN ASSOCIATES / PARKING
CODE CONSULTANTS, INC. / CODE CONSULTANT
THE SEXTANT GROUP / AV & ACOUSTICAL
HAMMER DESIGN ASSOCIATES / FOOD SERVICE
PYBURN & ODOM / ABATEMENT
TATA & HOWARD / TANK CONSULTANT
I.S.C. GROUP, INC. / IRRIGATION
DAN EUSER WATER ARCHITECTURE, INC. / WATER FEATURE

ARCHITECT/ENGINEERS:

studio **NOVA**
SCHRENK & PETERSON CONSULTING ENGINEERS / CIVIL
KORDA/NEMETH ENGINEERING / STRUCTURAL
BR+A CONSULTING ENGINEERS / MECH, ELECT, PLUMBING, LOW VOLTAGE
ARCHITECTURAL ENGINEERING / PLUMBING
SCALES ASSOCIATES / FIRE PROTECTION

DRAWING TITLE
BLDG 2 THIRD FLOOR PLAN - AREA G1

APPROVED: PROJECT DIRECTOR

PROJECT TITLE
SLVHCS REPLACEMENT MEDICAL
CENTER PROJECT

LOCATION
NEW ORLEANS, LOUISIANA

DATE
February 29, 2012

CHECKED
ML

DRAWN
AG/DMK

PROJECT NUMBER
629-HS2-401
BUILDING NUMBER
02
DOCUMENT SET PACKAGE
WP_08

DRAWING NUMBER
2A103-G1

OFFICE OF
CONSTRUCTION
AND FACILITIES
MANAGEMENT

Department of
Veterans Affairs