

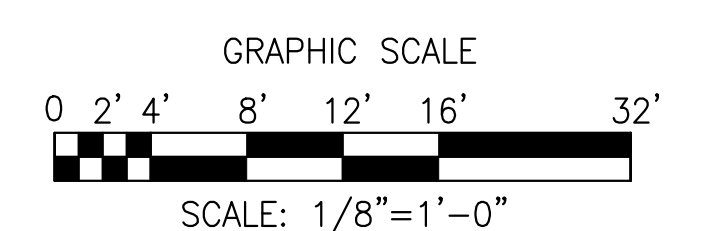
three inches = one foot
one and one-half inches = one foot
one inch = one foot
three-quarters inch = one foot
one-half inch = one foot
three-eighths inch = one foot
one-quarter inch = one foot
one-eighth inch = one foot

A
B
C
D
E
F

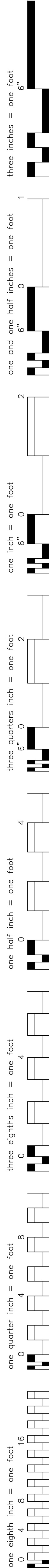
WEST ELEVATION
SCALE: 1/8"=1'-0"
REF: B5

PARTIAL ELEVATION
SCALE: 1/8"=1'-0"
REF: B1

PARTIAL ELEVATION
SCALE: 1/8"=1'-0"
REF: D5

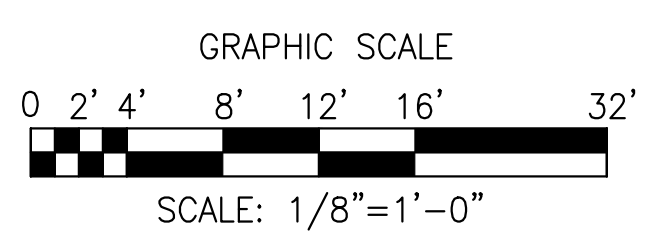


CONSULTANTS LEO A DAILY PLANNING ARCHITECTURE ENGINEERING INTERIORS 1201 Connecticut Ave NW Washington DC 20036 USA Tel 202-861-4600 Fax 202-672-8330		EBL ENGINEERS, LLC MECHANICAL • ELECTRICAL • FIRE PROTECTION 8005 Harbor Road, Baltimore, Maryland 21234-5701 (410) 668-8010 FAX (410) 668-8001 e-mail: ebl@eblengineers.com Fire Protection • Life Safety • Code Compliance		JMT JOHNSON, MERRIMAN & THOMPSON Engineering & Planning 72 Lovelock Circle Sparks, Maryland 21152 phone / 410.329.3100 fax / 410.472.2200		AMT LLC PROFESSIONAL ENGINEERS & LAND SURVEYORS 10 G STREET, NE, SUITE 430 WASHINGTON, DC 20002 PH: (202) 289-4545 FAX: (202) 289-5051		DISTRICT OF COLUMBIA KHALED I. BHATTI 100943 LICENSED ARCHITECT		ARCHITECT MIMAR MIMAR ARCHITECTS, INC. Architecture, Engineering, Design/Build 7004 Security Blvd, Suite #210 Baltimore, MD 21244 Phone: 410-944-4900 Fax: 410-944-8044		Drawing Title BUILDING ELEVATIONS Approved: Project Director APPROVED - BY - NAME APPROVED - BY - TITLE/RANK STATION - MANAGEMENT		Project Title ADDITION AND RENOVATION OF THE COMMUNITY LIVING CENTER Location VAMC WASHINGTON, DC Date APPROVED - DATE Checked BV Drawn MC/RCH		Project Number 688-400 Building Number BUILDING #6 Drawing Number AE-202 Dwg. XX of		Office of Construction and Facilities Management Department of Veterans Affairs	
--	--	--	--	---	--	---	--	--	--	---	--	---	--	--	--	--	--	---	--



B5

REF.



D5

REF.	DESCRIPTION
1	...
2	...
3	...
4	...
5	...
6	...
7	...
8	...
9	...
10	...
11	...
12	...
13	...
14	...
15	...
16	...
17	...
18	...
19	...
20	...
21	...
22	...
23	...
24	...
25	...
26	...
27	...
28	...
29	...
30	...
31	...
32	...
33	...
34	...
35	...
36	...
37	...
38	...
39	...
40	...
41	...
42	...
43	...
44	...
45	...
46	...
47	...
48	...
49	...
50	...
51	...
52	...
53	...
54	...
55	...
56	...
57	...
58	...
59	...
60	...
61	...
62	...
63	...
64	...
65	...
66	...
67	...
68	...
69	...
70	...
71	...
72	...
73	...
74	...
75	...
76	...
77	...
78	...
79	...
80	...
81	...
82	...
83	...
84	...
85	...
86	...
87	...
88	...
89	...
90	...
91	...
92	...
93	...
94	...
95	...
96	...
97	...
98	...
99	...
100	...

CONSULTANTS

LEO A DALY

PLANNING
ARCHITECTURE
ENGINEERING
INTERIORS

1201 Connecticut Ave NW Washington DC 20036 USA
Tel 202-861-4600 Fax 202-872-8530

JMT **JOHNSON, MIRMIRAN & THOMPSON**
Engineering A Brighter Future

72 Loveton Circle
Sparks, Maryland 21152
phone / 410.329.3100
fax / 410.472.2200

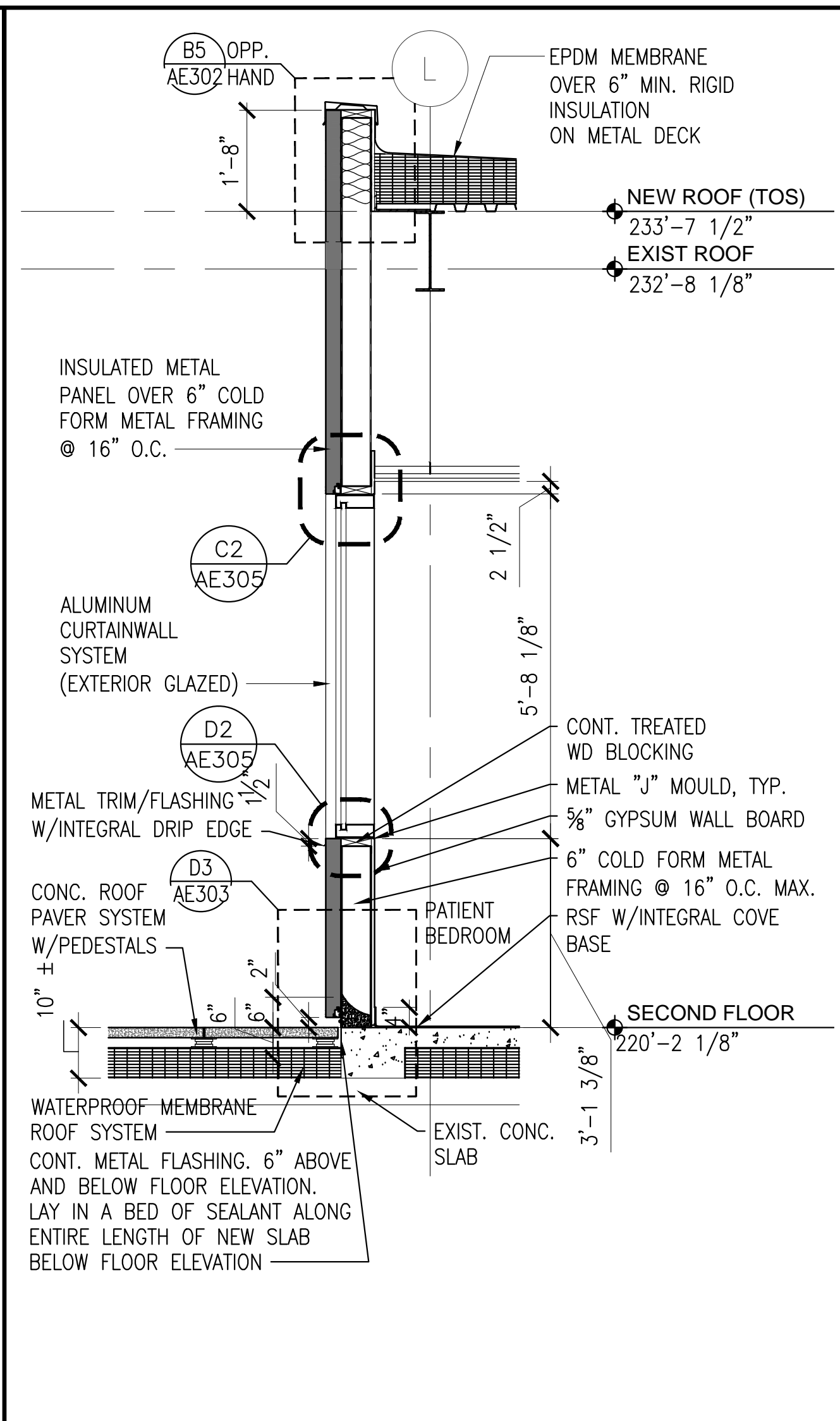
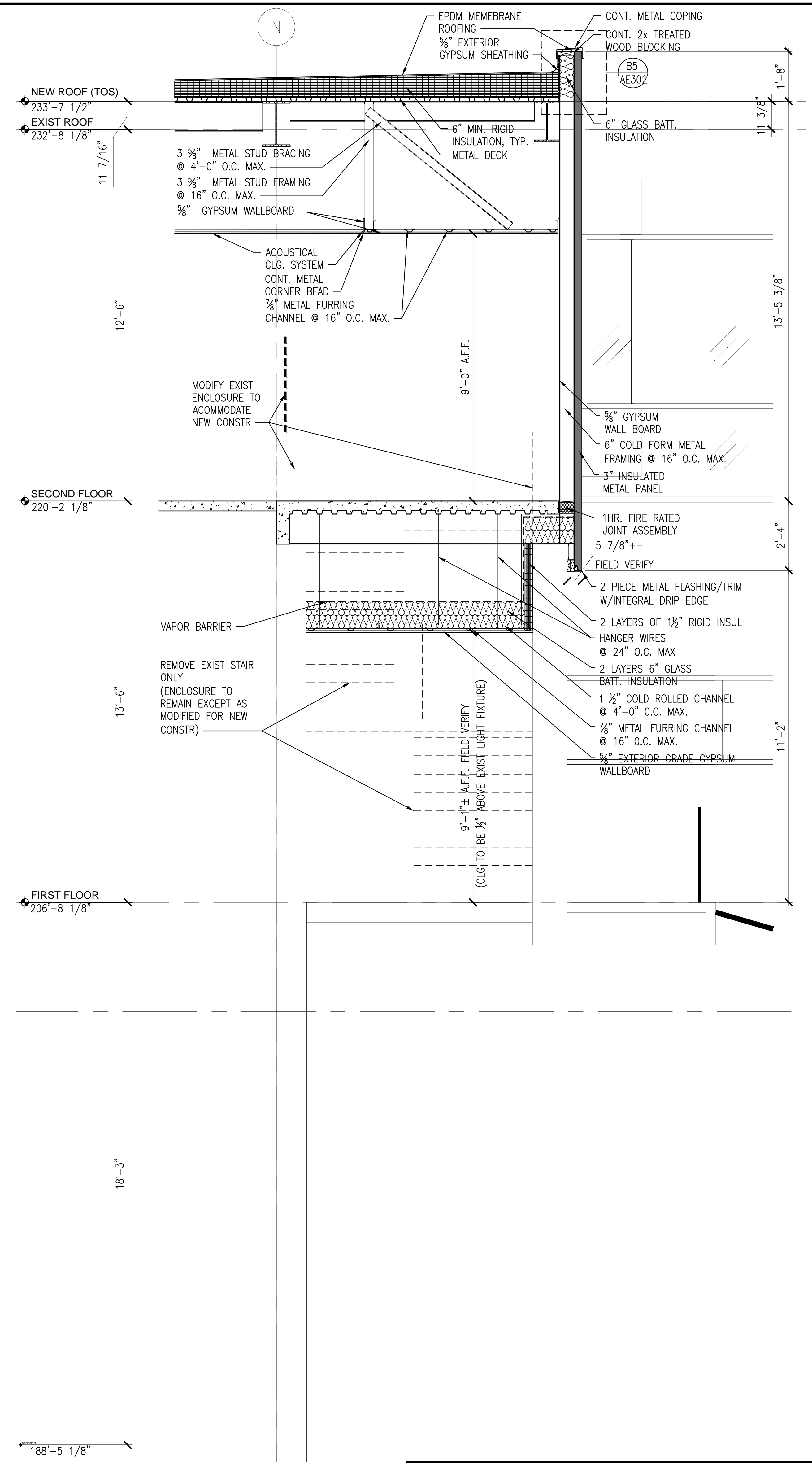
Drawing Title BUILDING SECTIONS
Approved Project Director APPROVED - BY - NAME APPROVED - BY - TITLE/RANK STATION - MANAGEMENT

Project Number	688-400
Building Number	BUILDING #6
Drawing Number	AE-301
Dwg. XX of	

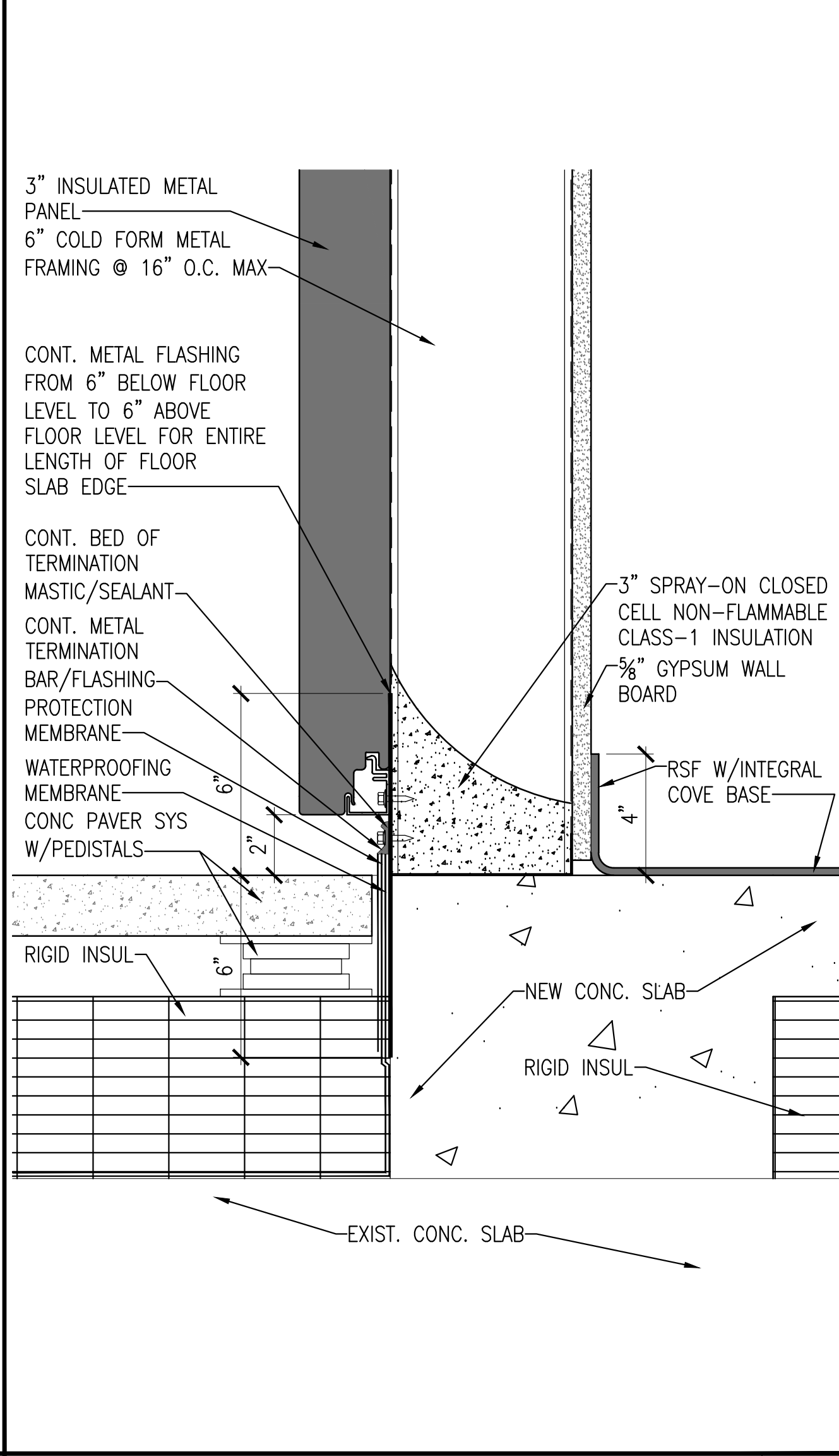
Office of
Construction
and Facilities
Management

 Department of
Veterans Affairs

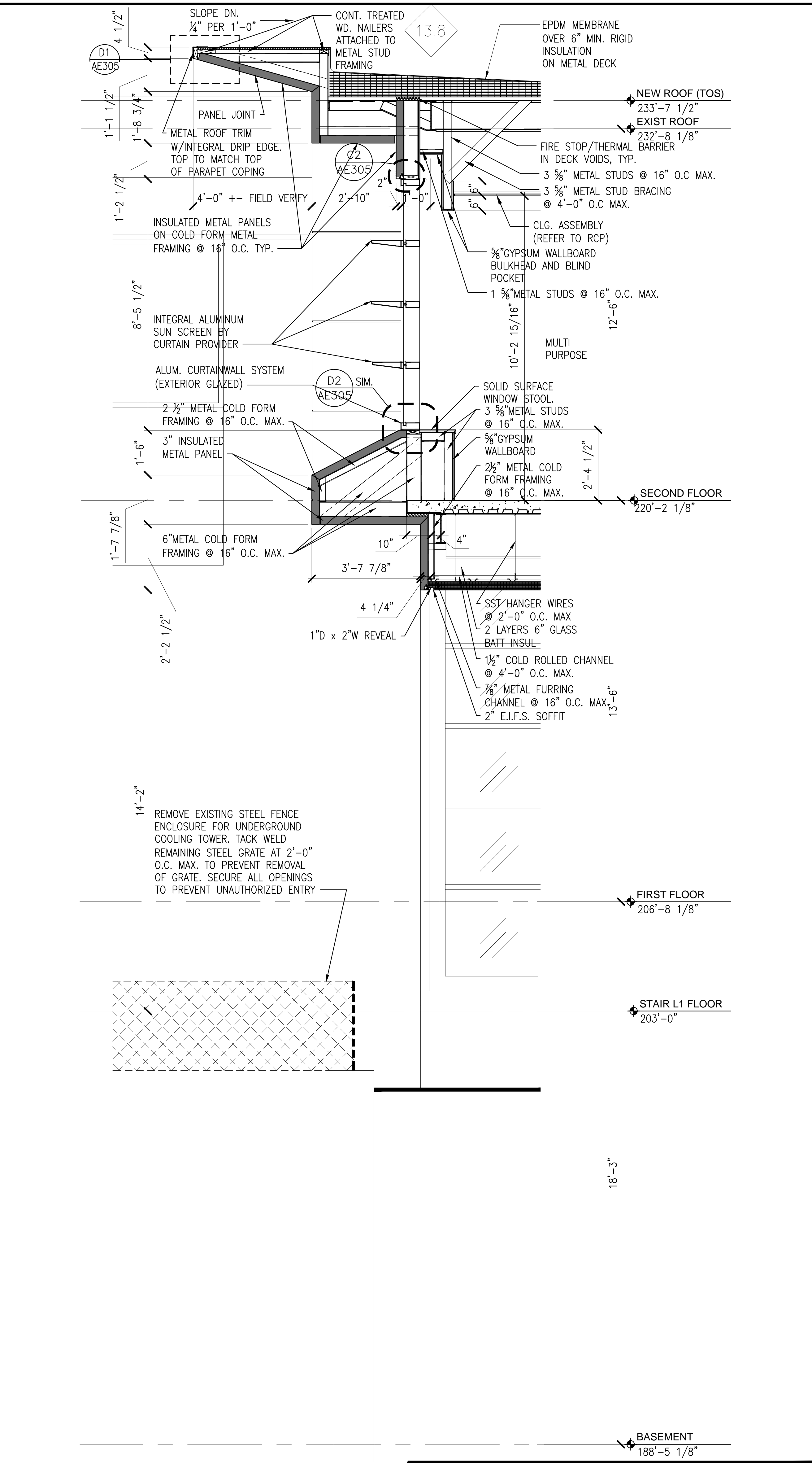
three inches = one foot
one and one half inches = one foot
one inch = one foot
three quarters inch = one foot
one half inch = one foot
three eighths inch = one foot
one quarter inch = one foot
one eighth inch = one foot



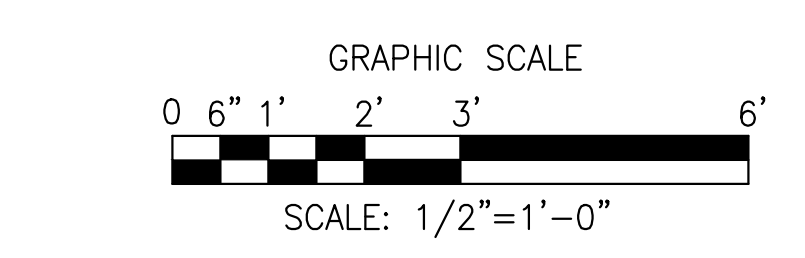
WALL SECTION
SCALE: 1/2"=1'-0"
REF: B3



WALL SECTION
SCALE: 1/2"=1'-0"
REF: D4

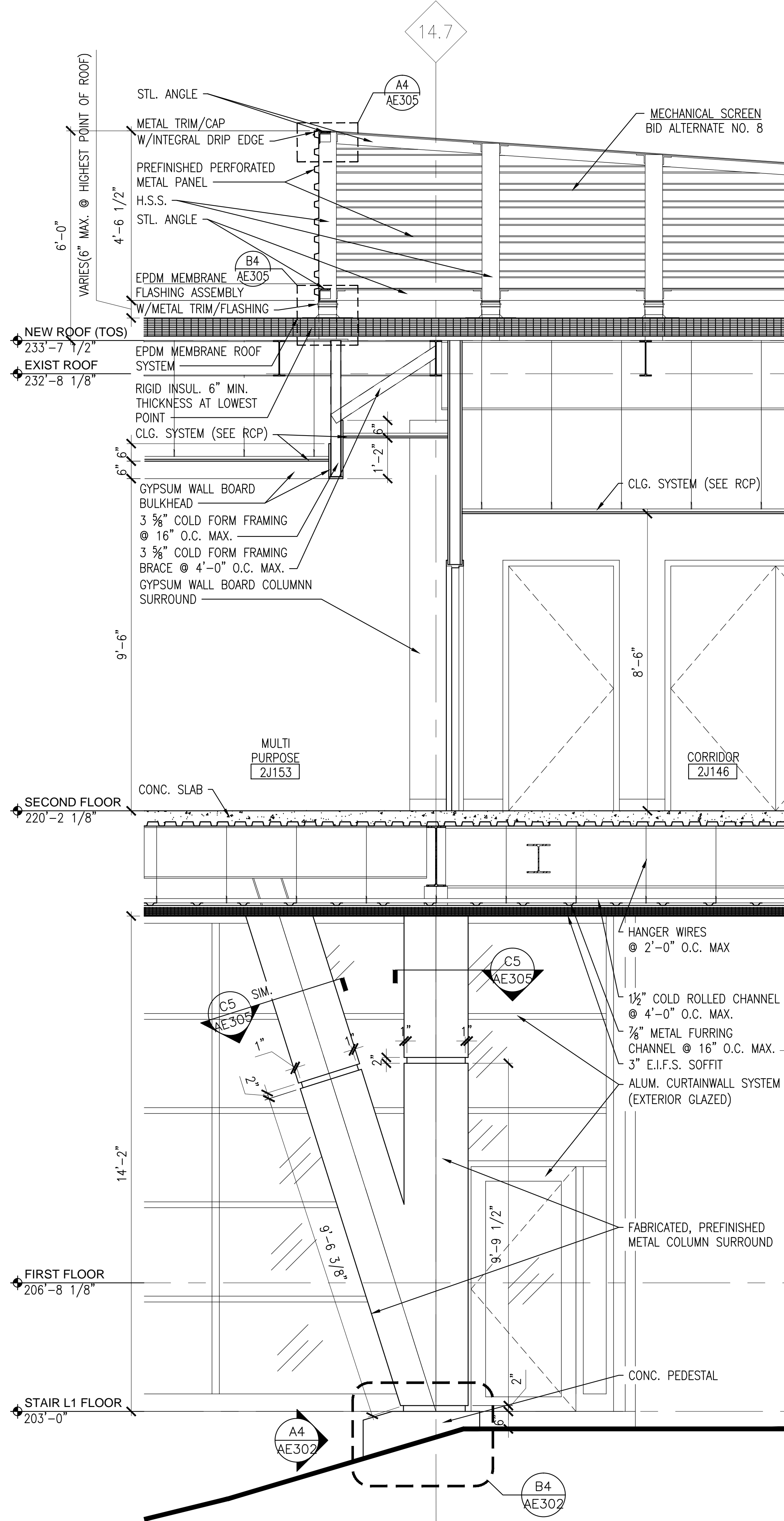


WALL SECTIONS
SCALE: 1/2"=1'-0"
REF: D1

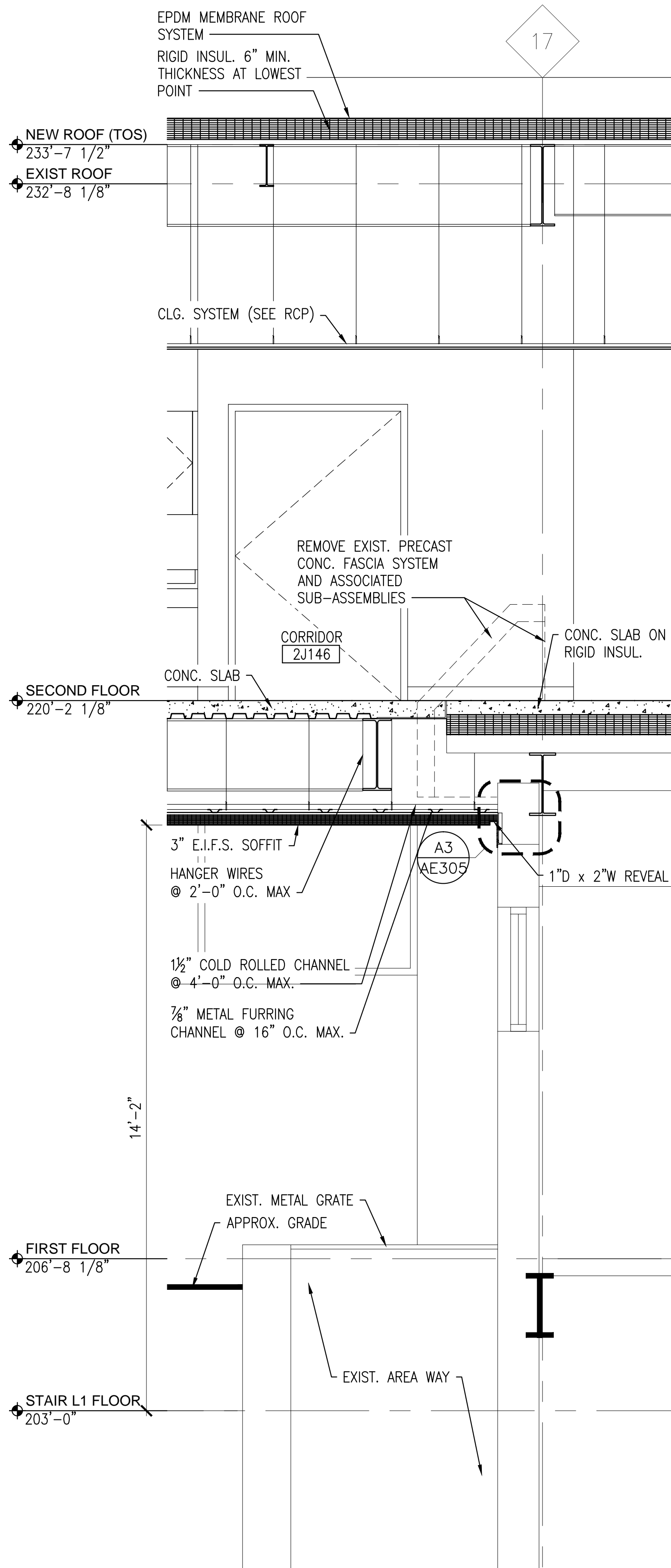


CONSULTANTS		ARCHITECT		Project Title		Project Number	
LEO A DAILY PLANNING ARCHITECTURE ENGINEERING INTERIORS 2201 Connecticut Ave NW Washington DC 20036 USA Tel 202-681-4600 Fax 202-672-8500		EBL ENGINEERS, LLC MECHANICAL • ELECTRICAL • FIRE PROTECTION The Professional Engineering Center 8000 Historic Road, Baltimore, Maryland 21234-5701 (410) 688-8000 FAX (410) 688-8001 e-mail: ebl@eblengr.com Fire Protection • Life Safety • Code Compliance		MIMAR ARCHITECTS, INC. Architecture, Engineering, Design/Build 7004 Security Blvd, Suite #210 Baltimore, MD 21244 Phone: 410-944-4900 Fax: 410-944-8044		688-400	
ISSUE FOR BIDDING Revisions:		AMT LLC PROFESSIONAL ENGINEERS & LAND SURVEYORS 10 G STREET, NE, SUITE 400 WASHINGTON, DC 20002 PH: (202) 289-4549 FAX: (202) 289-5051		Location VAMC WASHINGTON, DC		Building Number BUILDING #6	
10/06/2015 Date		DISTRICT OF COLUMBIA 100943 ARCHITECT		Approved Project Director APPROVED - BY - NAME APPROVED - BY - TITLE/RANK STATION - MANAGEMENT		Drawing Number AE-303	
				Date APPROVED - DATE		Dwg. XX of	
				Checked BV			
				Drawn MC/RCH			
						Office of Construction and Facilities Management Department of Veterans Affairs	

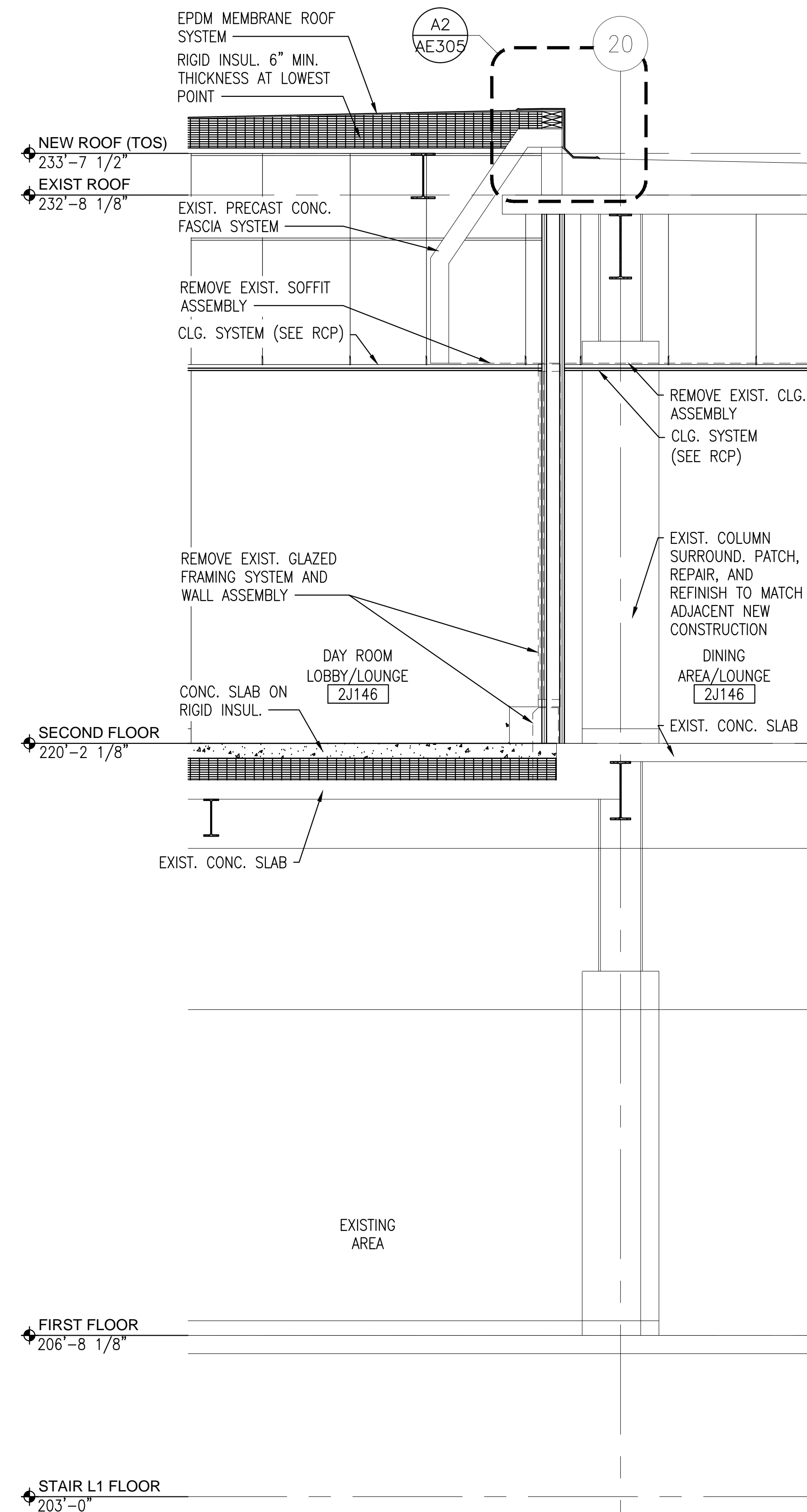
three eighths inch = one foot
one quarter inch = one foot
three eighths inch = one foot
one half inch = one foot
one quarter inch = one foot
three eighths inch = one foot
one half inch = one foot
three quarters inch = one foot
one inch = one foot
one and one half inches = one foot
three inches = one foot



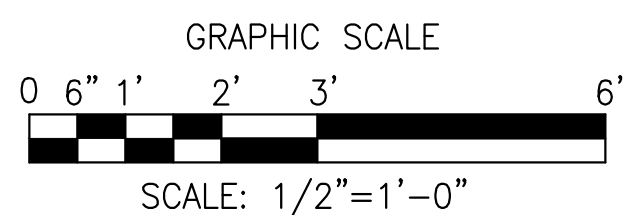
WALL SECTION
SCALE: 1/2"=1'-0"
REF: D3



WALL SECTION
SCALE: 1/2"=1'-0"
REF: D2



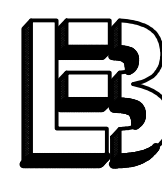
WALL SECTION
SCALE: 1/2"=1'-0"
REF: D1



CONSULTANTS

LEO A DAILY
PLANNING
ARCHITECTURE
ENGINEERING
INTERIORS

201 Connecticut Ave NW Washington DC 20036 USA
Tel 202-861-4600 Fax 202-872-8530



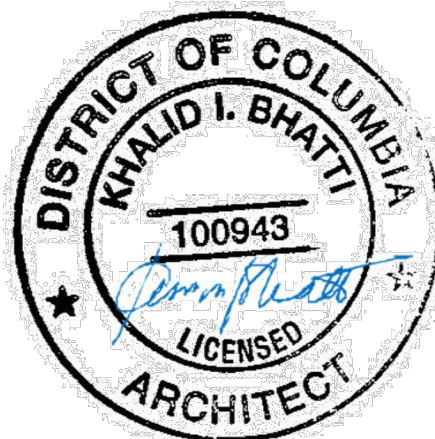
EBL ENGINEERS, LLC
MECHANICAL • ELECTRICAL • FIRE PROTECTION
8005 Harford Road, Baltimore, Maryland 21234-5701
(410) 668-8000 Fax (410) 668-8001
e-mail: ebl@eblengr.com
Fire Protection • Life Safety • Code Compliance



72 Loveton Circle
Sparks, Maryland 21152
phone / 410.329.3100
fax / 410.472.2200



10 G STREET, NE, SUITE 430
WASHINGTON, DC 20002
PH: (202) 289-4545
FAX: (202) 289-5051



ARCHITECT



MIMAR ARCHITECTS, INC.
Architecture, Engineering, Design/Build
7004 Security Blvd, Suite #210
Baltimore, MD 21244
Phone: 410-944-4900 Fax: 410-944-8044

Drawing Title
WALL SECTIONS

Approved: Project Director
APPROVED - BY - NAME
APPROVED - BY - TITLE/RANK
STATION - MANAGEMENT

Project Title
ADDITION AND RENOVATION
OF THE
COMMUNITY LIVING CENTER

Location
VAMC WASHINGTON, DC
Date
APPROVED - DATE

Checked
BV

Drawn
MC/RCH

Project Number
688-400

Building Number
BUILDING #6

Drawing Number
AE-304

Dwg. XX of

Office of
Construction
and Facilities
Management

