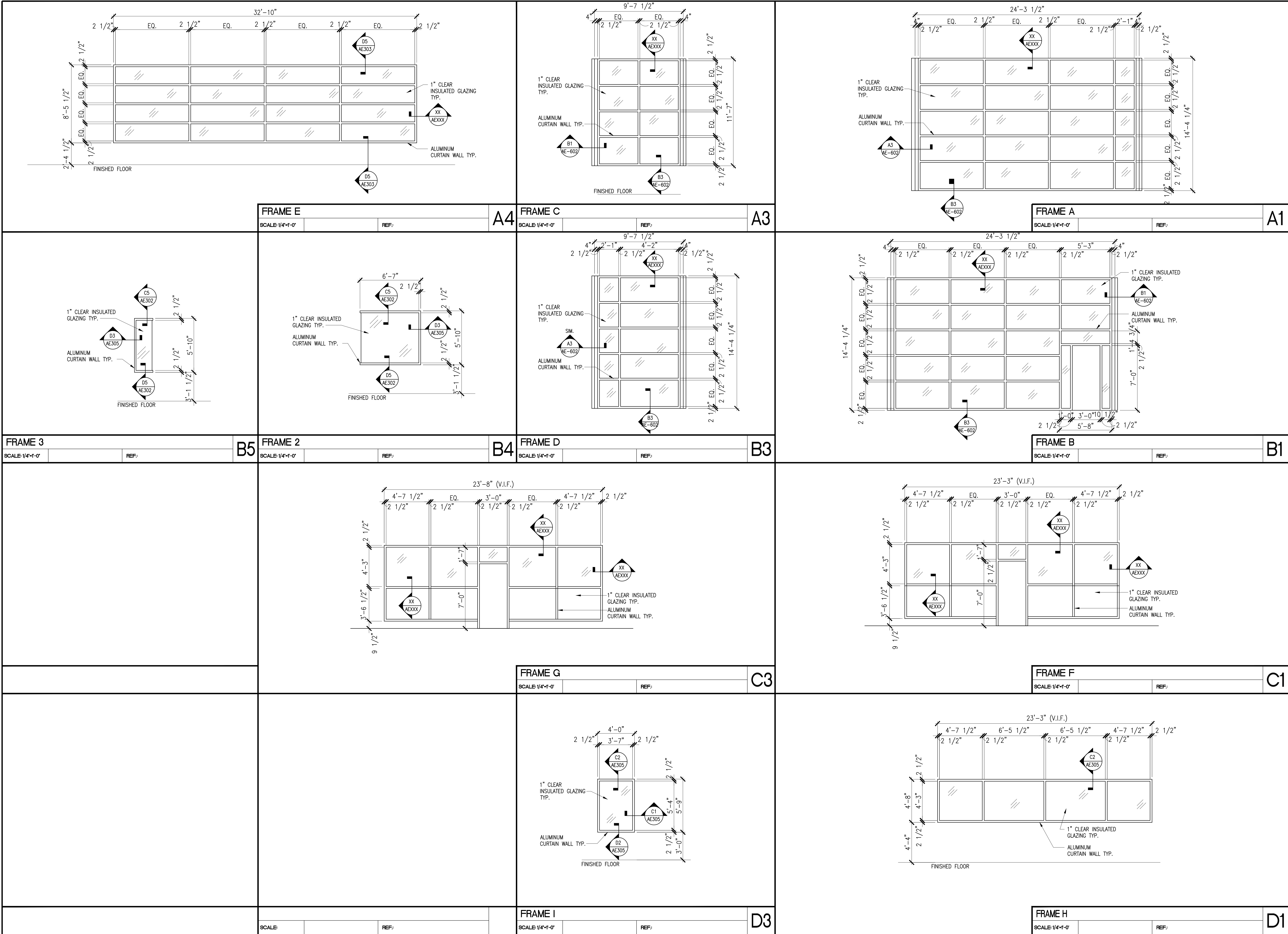
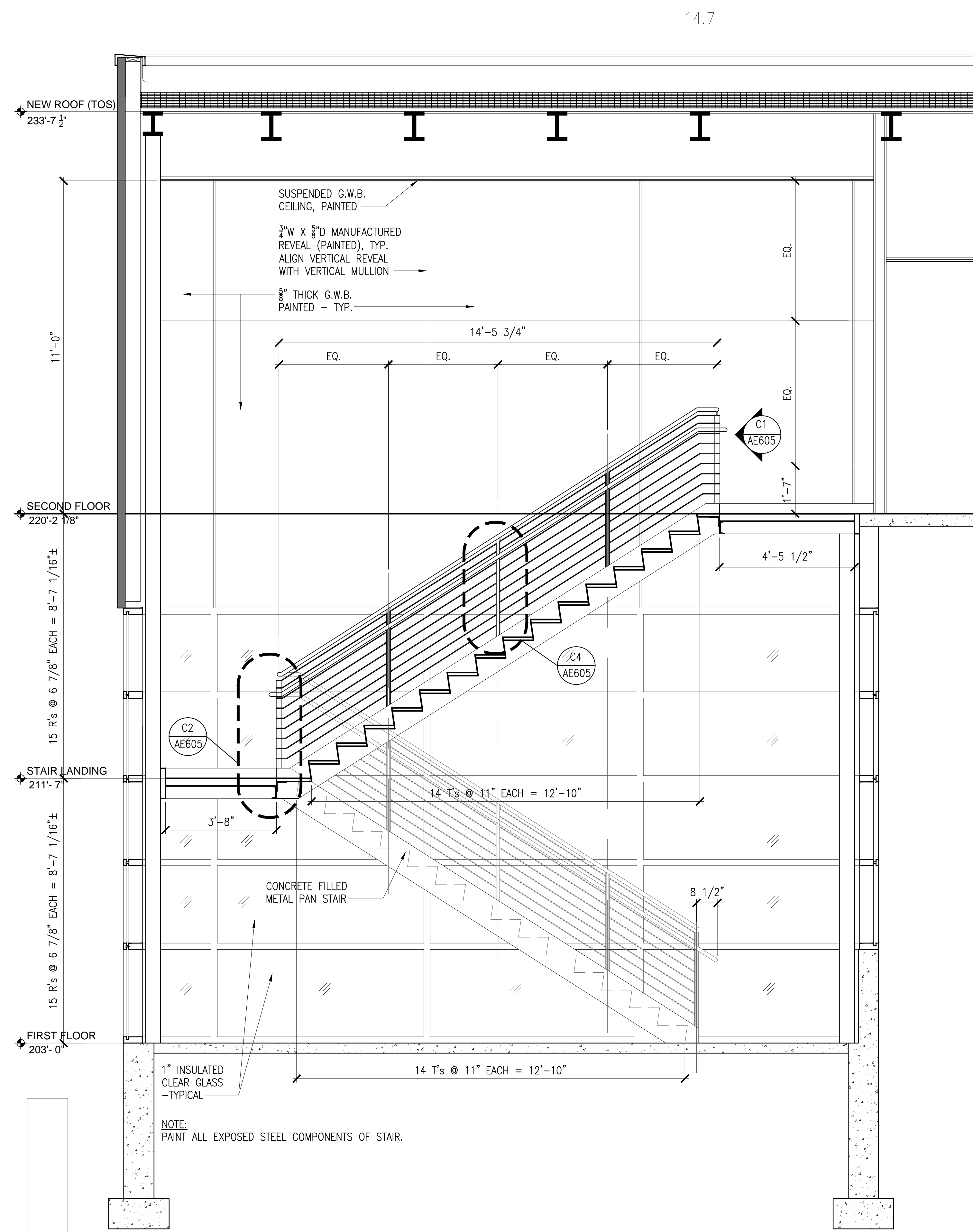


three inches = one foot
one and one half inches = one foot
one inch = one foot
one inch = one foot
three quarters inch = one foot
one half inch = one foot
one half inch = one foot
three eighths inch = one foot
one quarter inch = one foot
one eighth inch = one foot
one eighth inch = one foot

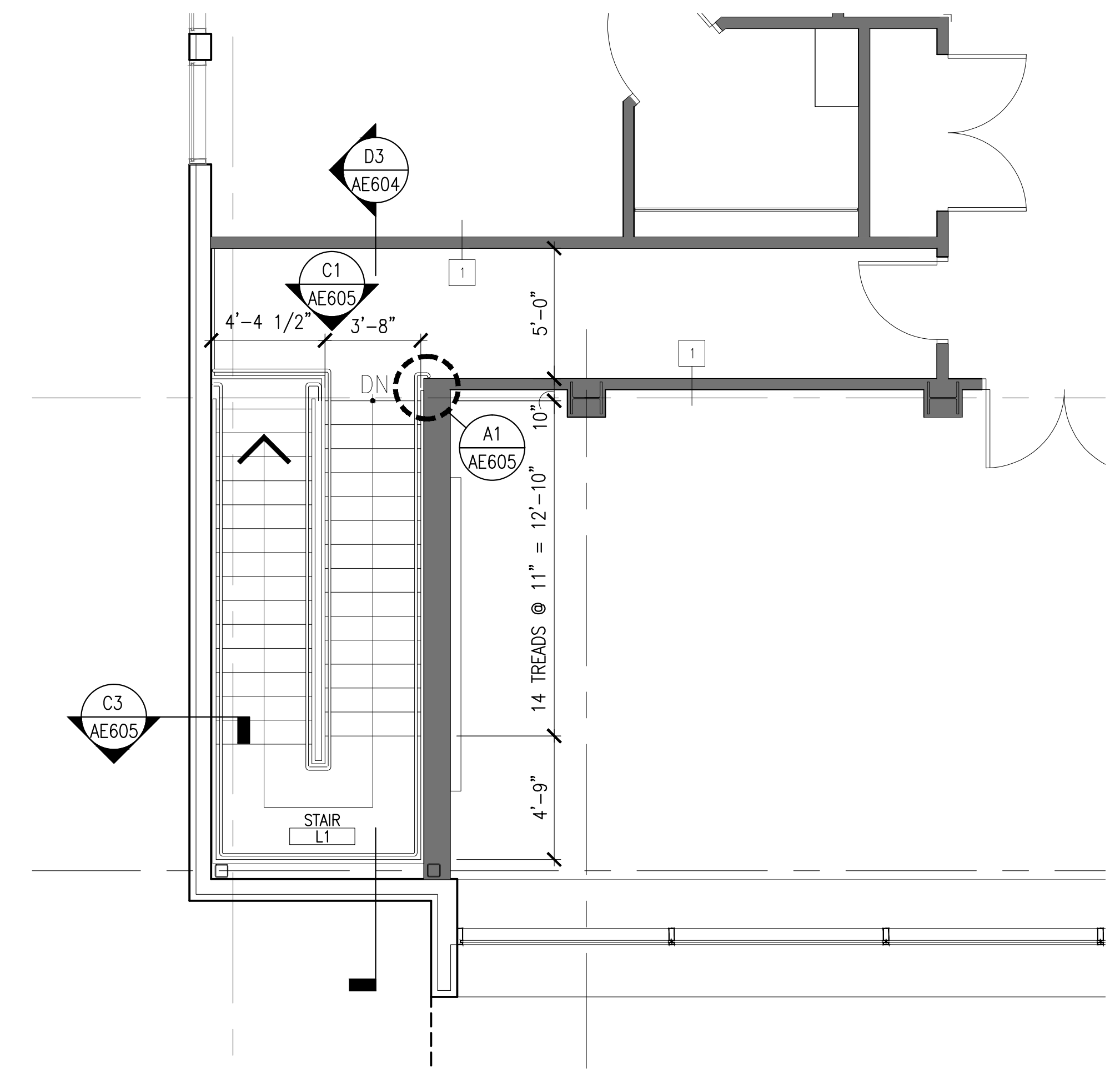


CONSULTANTS LEO A DAILY PLANNING ARCHITECTURE ENGINEERING INTERIORS 1201 Connecticut Ave NW Washington DC 20036 USA Tel 202-961-8600 Fax 202-972-6530		EBL ENGINEERS, LLC MECHANICAL • ELECTRICAL • FIRE PROTECTION The Professional Engineering Center 6005 Harbor Road, Baltimore, Maryland 21244-3701 (410) 668-8500 Fax (410) 668-2601 e-mail: ebldesign@engineers.com Fire Protection • Life Safety • Code Compliance		JMT JOHNSON, MUMFORD & THOMPSON Engineering A Brighter Future 72 Loveton Circle Sparks, Maryland 21152 phone / 410.329.3100 fax / 410.472.2200		AMT LLC PROFESSIONAL ENGINEERS & LAND SURVEYORS 10 G STREET, NE, SUITE 430 WASHINGTON, DC 20002 PH: (202) 289-6345 FAX: (202) 289-9581		DISTRICT OF COLUMBIA 100943 KHALID I. BHATTI ARCHITECT LICENSED		ARCHITECT MIMAR MIMAR ARCHITECTS, INC. Architecture, Engineering, Design/Build 7004 Security Blvd, Suite #210 Baltimore, MD 21244 Phone: 410-944-4900 Fax: 410-944-8044		Drawing Title FRAME TYPES Approved Project Director APPROVED - BY - NAME APPROVED - BY - TITLE/RANK STATION - MANAGEMENT		Project Title ADDITION AND RENOVATION OF THE COMMUNITY LIVING CENTER Location VAMC WASHINGTON, DC Date APPROVED - DATE Checked BV Drawn MC		Project Number 688-400 Building Number BUILDING #6 Drawing Number AE-603 Dwg. XX of		Office of Construction and Facilities Management Virginia Affairs Public Health Care System	
--	--	--	--	--	--	---	--	--	--	---	--	---	--	--	--	--	--	---	--

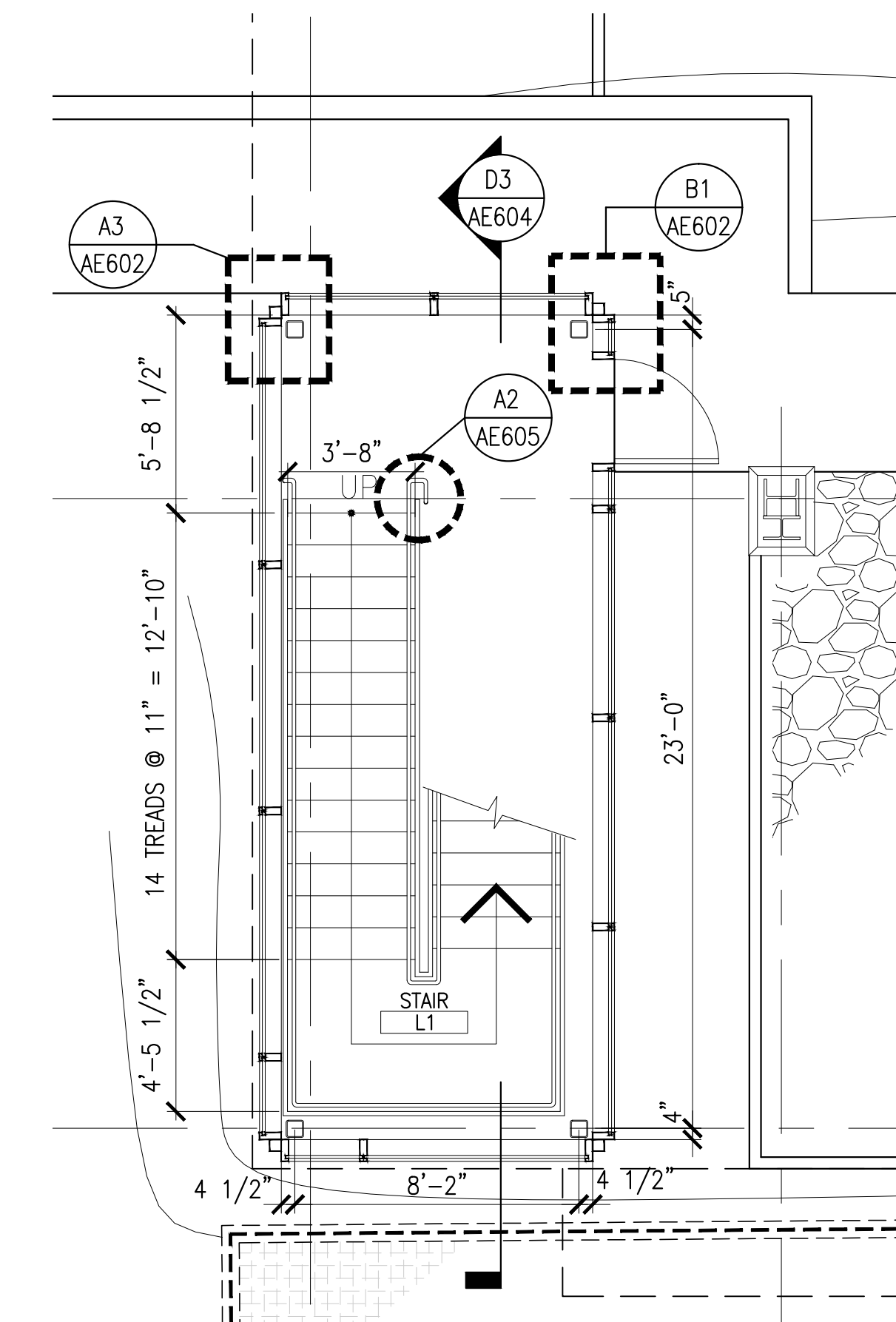
three eighths inch = one foot
one quarter inch = one foot
one eighth inch = one foot
one half inch = one foot
one inch = one foot
three quarters inch = one foot
one and one half inches = one foot
one and one half inches = one foot
three inches = one foot



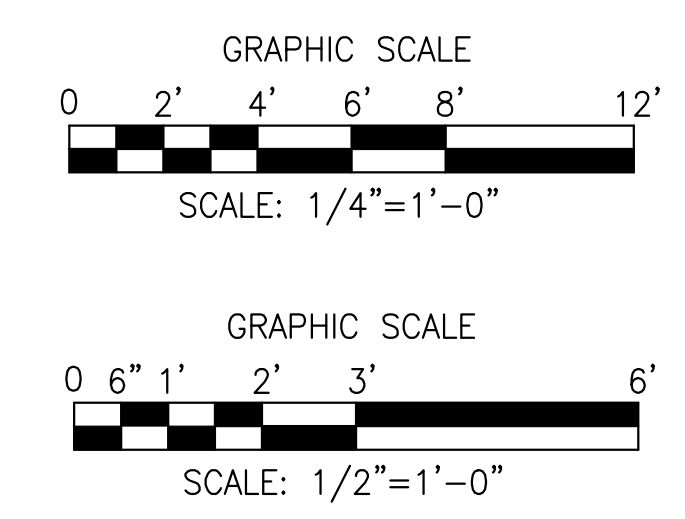
STAIR SECTION
SCALE 1/2" = 1'-0"
REF: D3



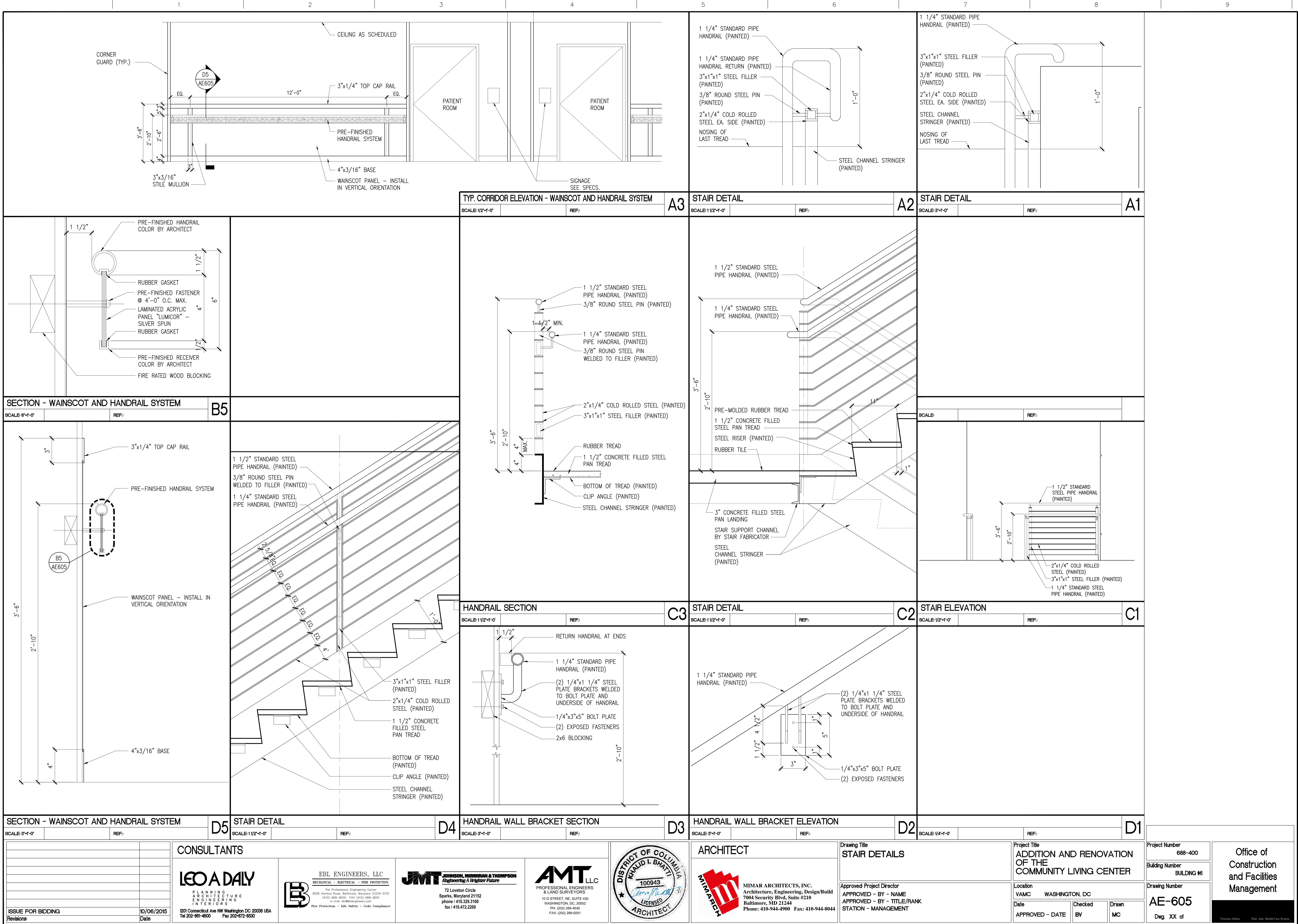
STAIR PLAN, SECOND FLOOR
SCALE 1/4" = 1'-0"
REF: B1

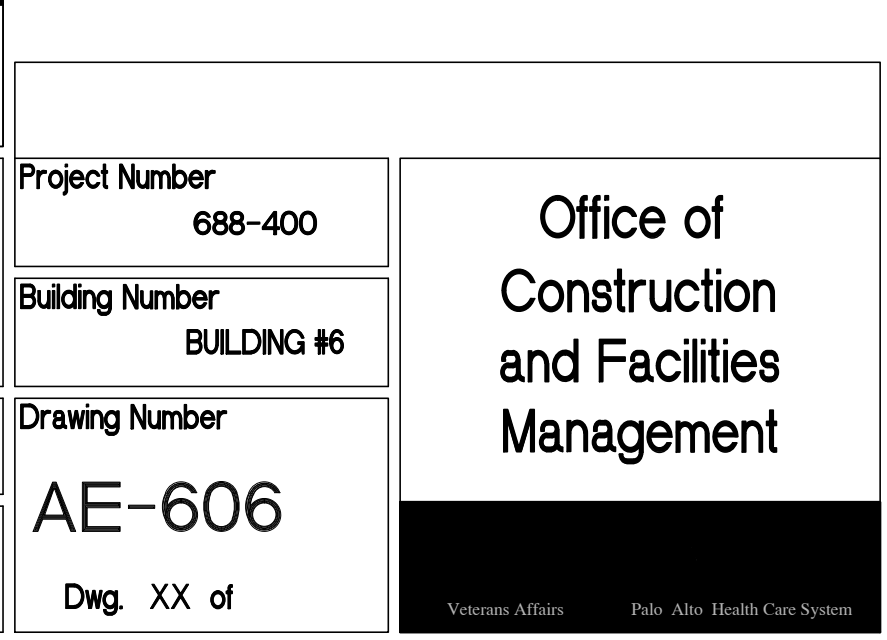
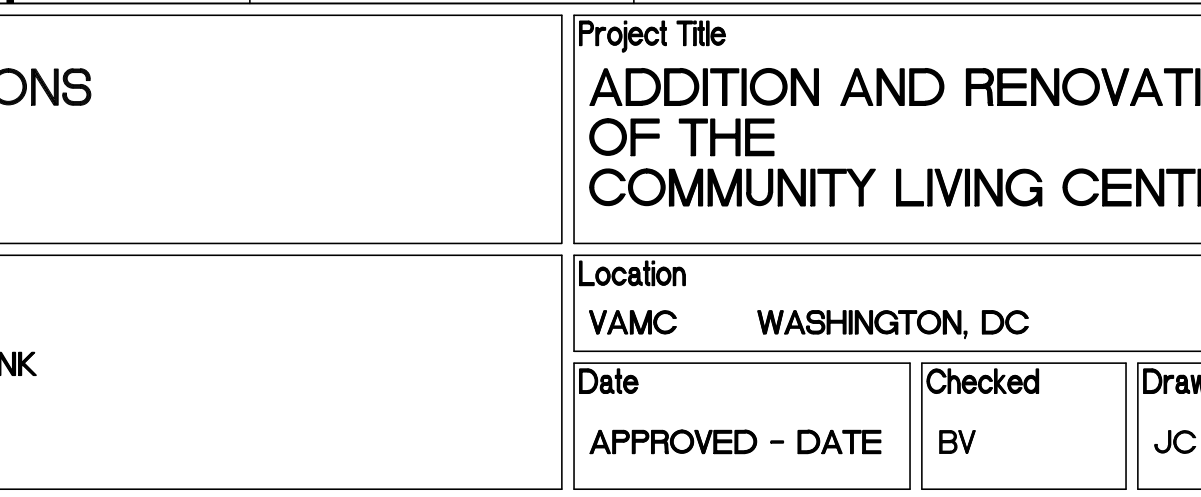
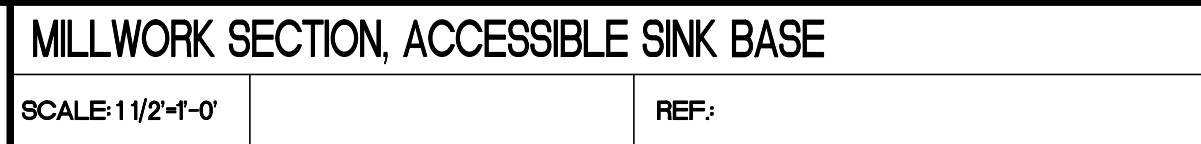
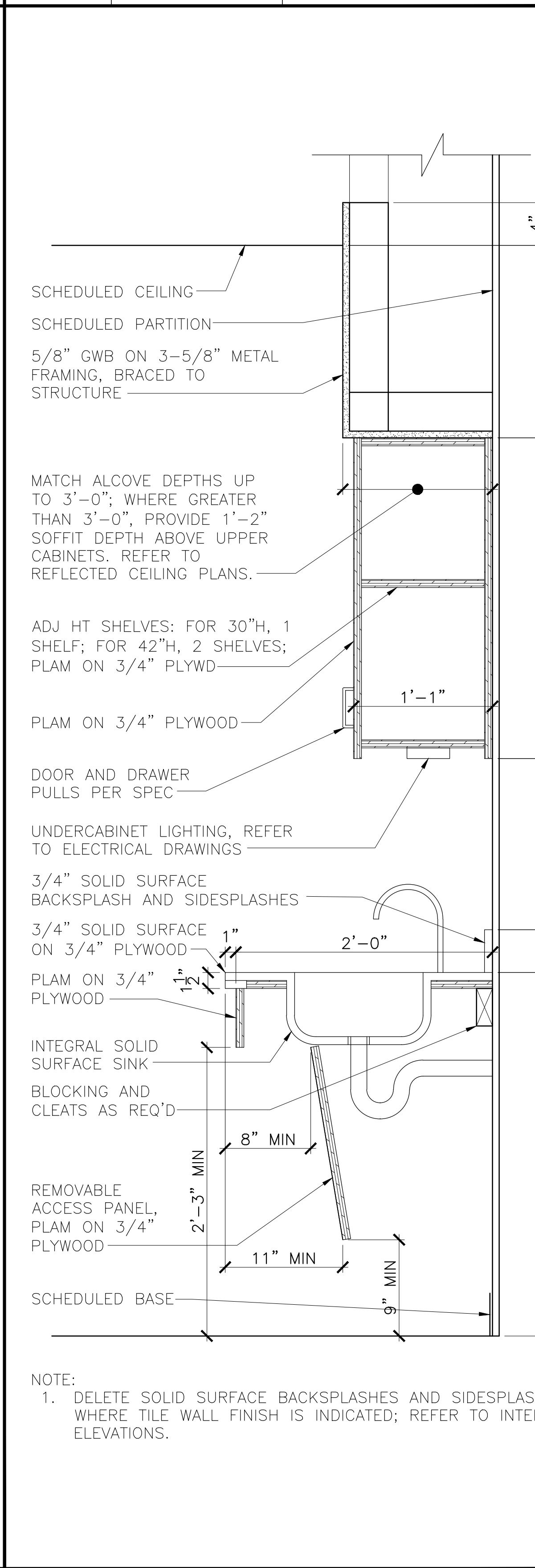
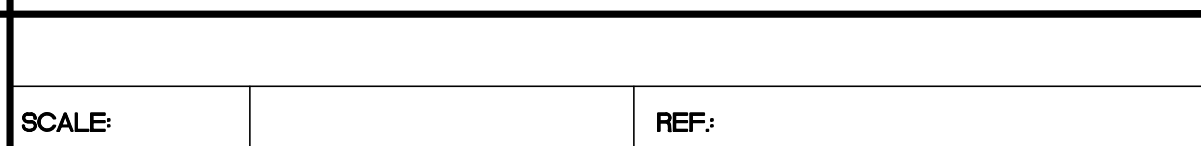
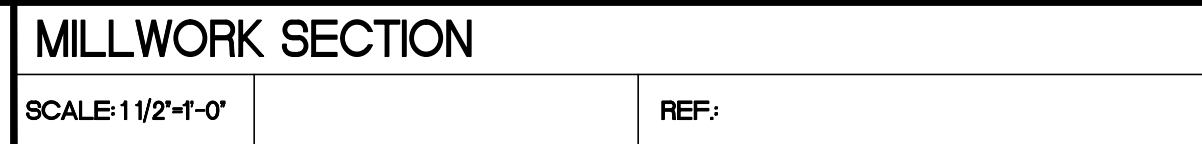
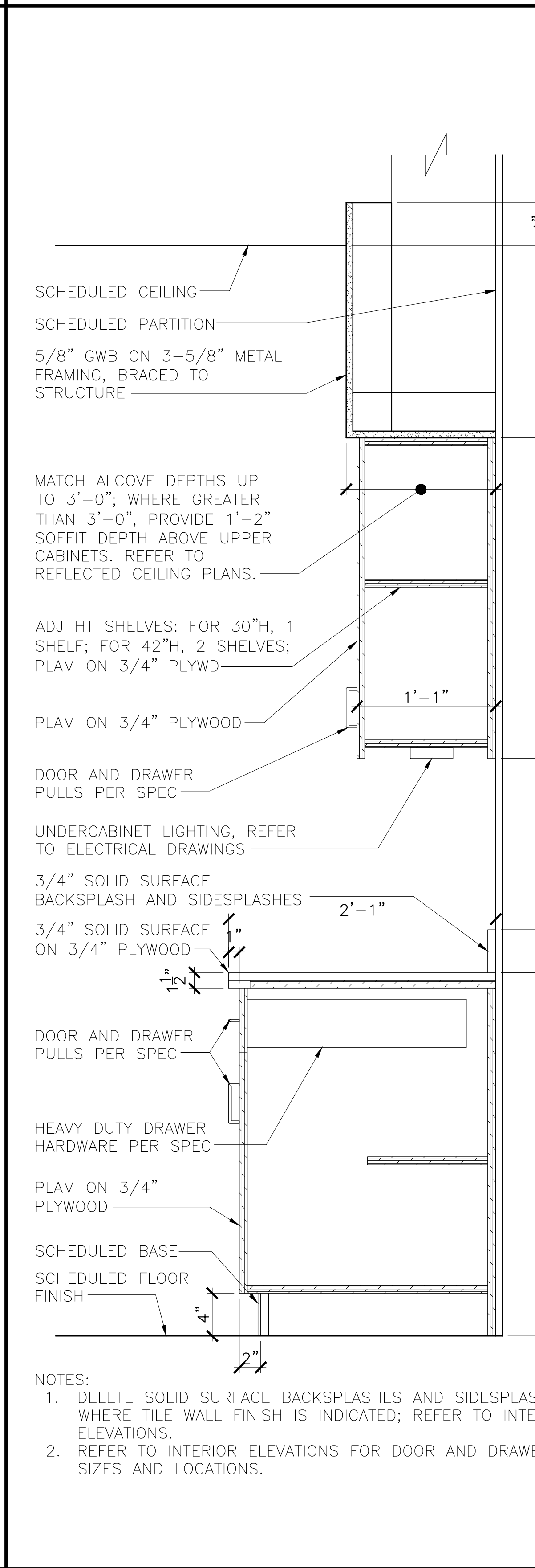
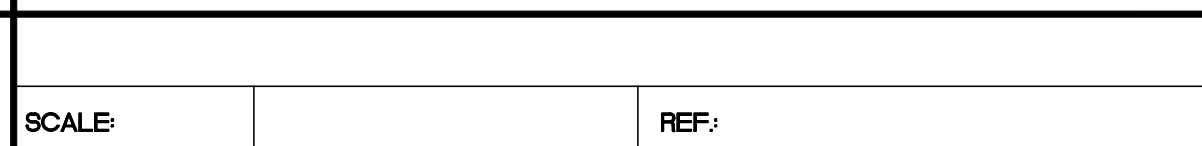
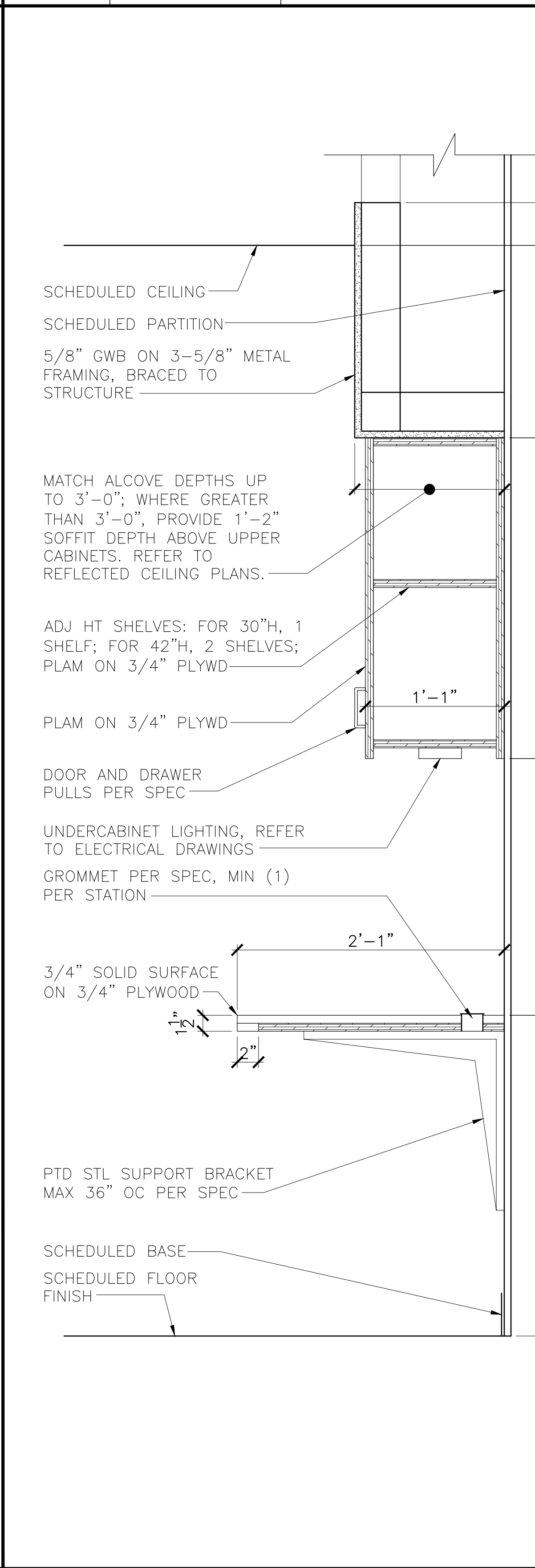
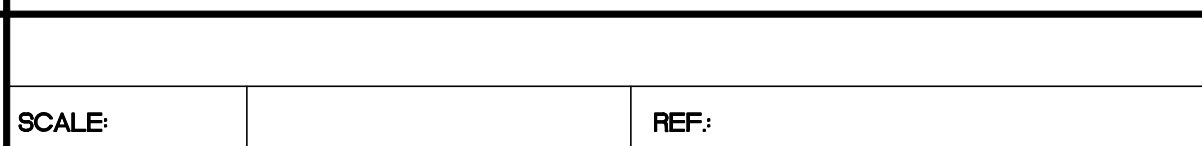
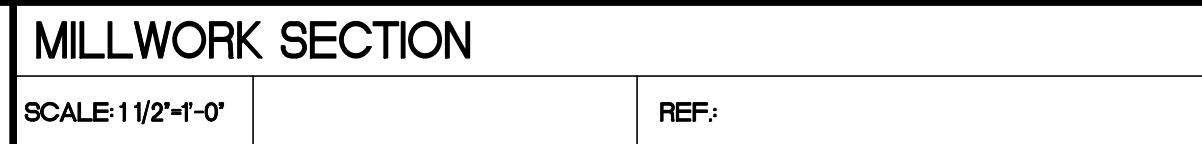
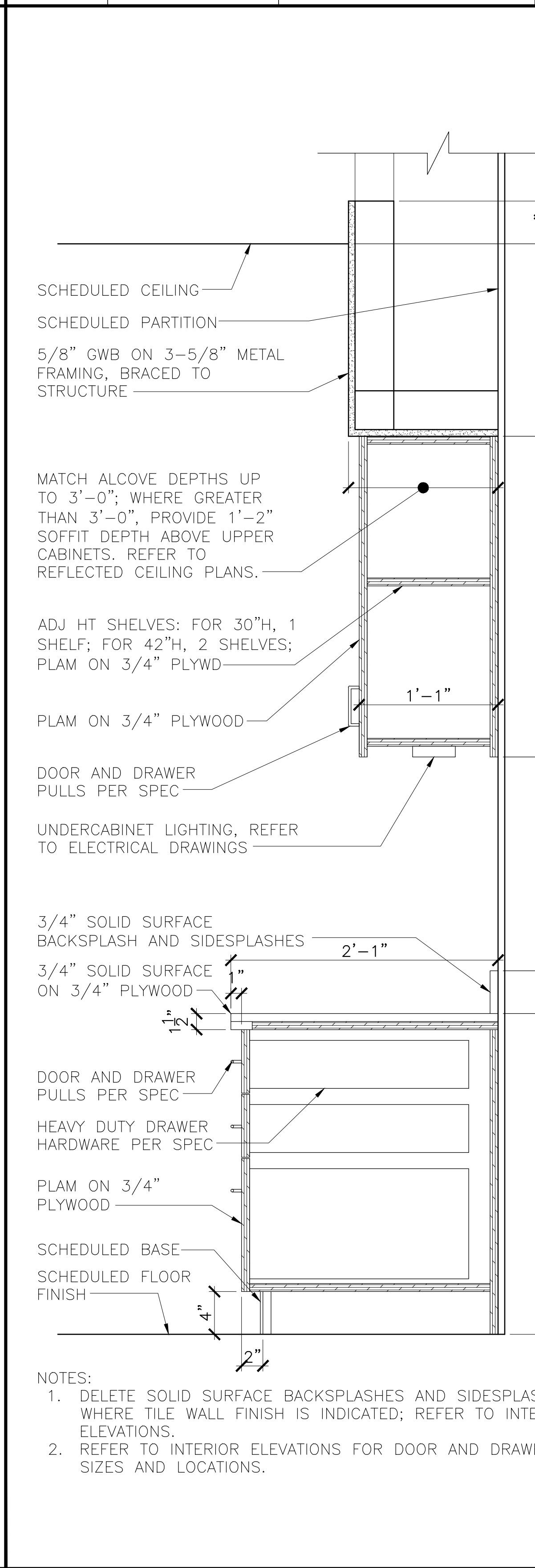
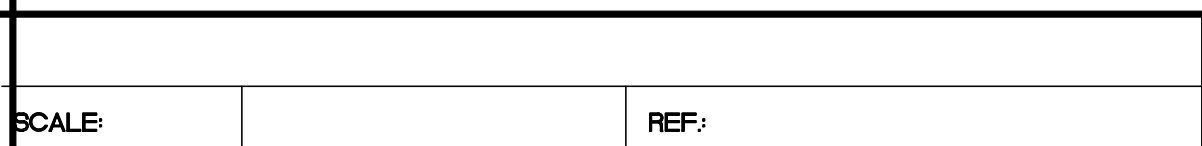
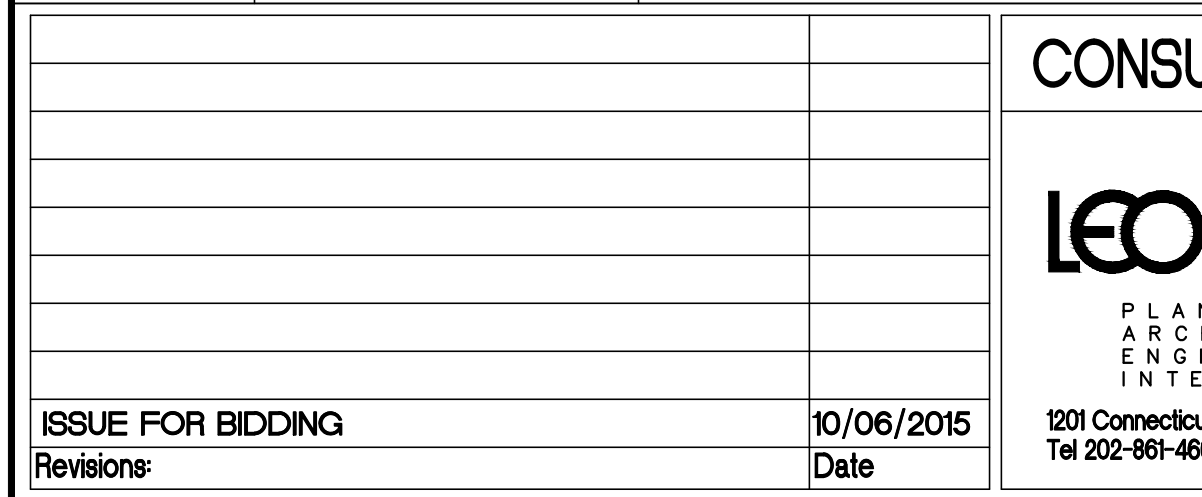
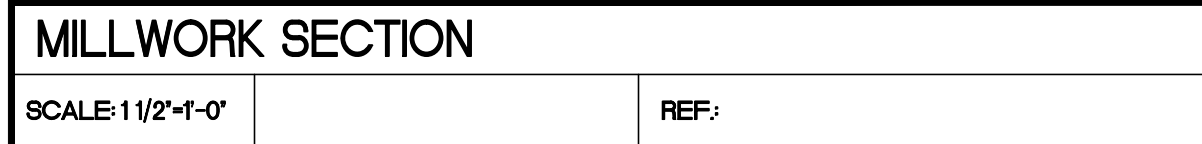
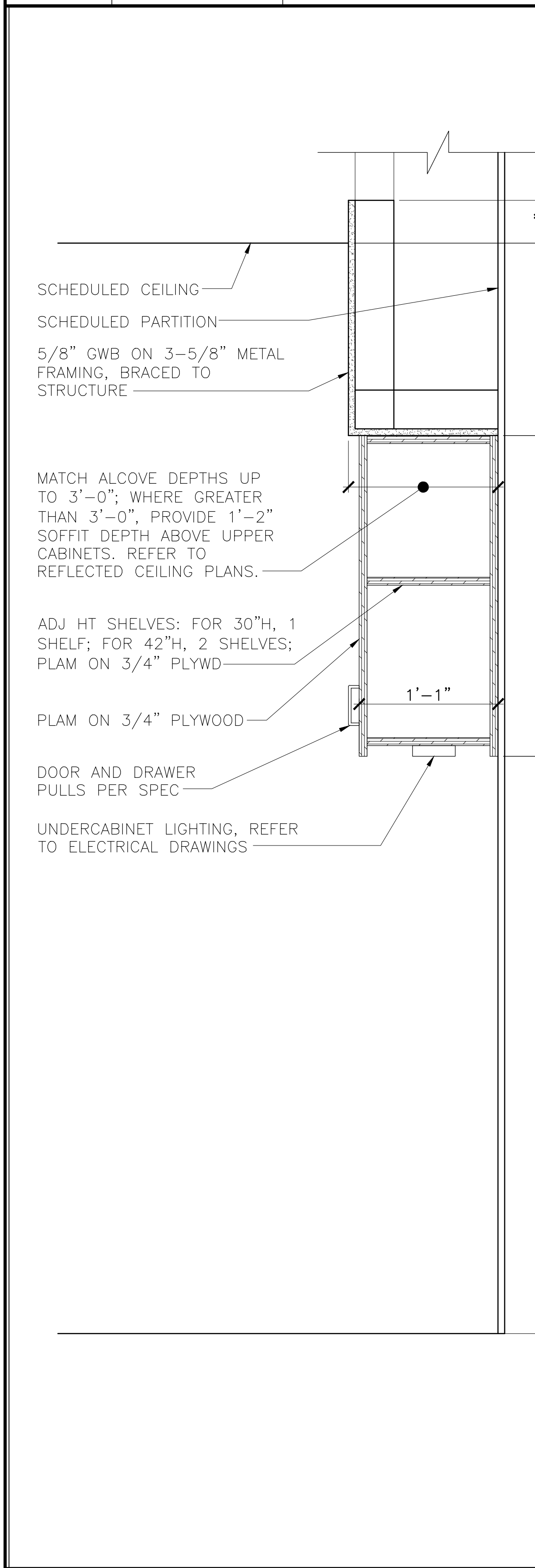
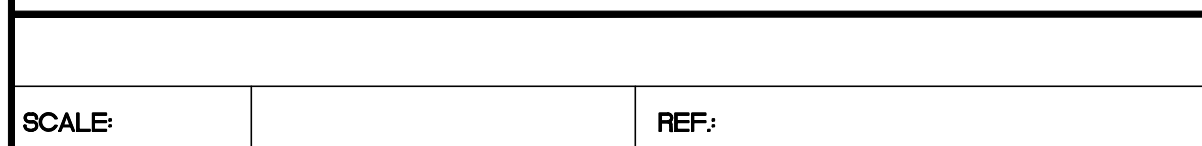
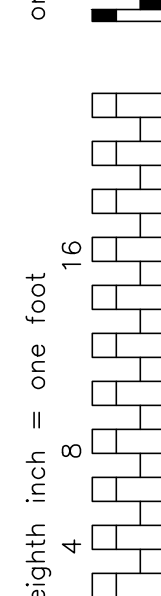
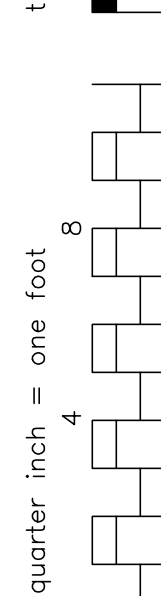
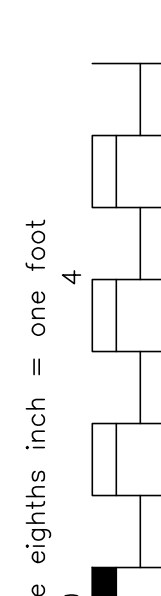
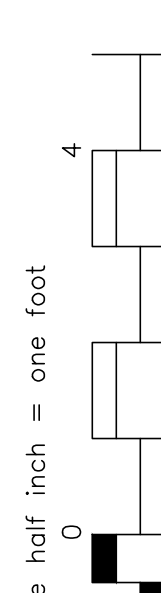
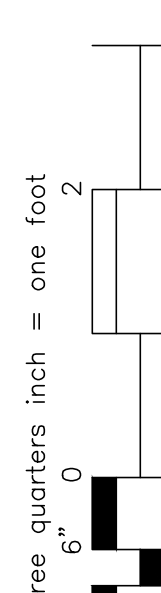
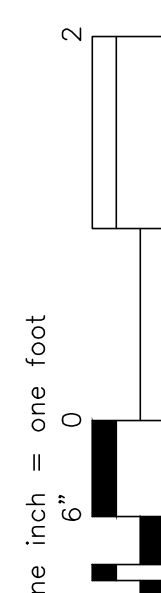
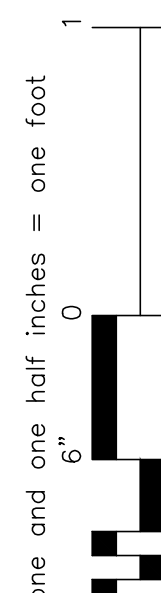


STAIR PLAN, FIRST FLOOR
SCALE 1/4" = 1'-0"
REF: D1

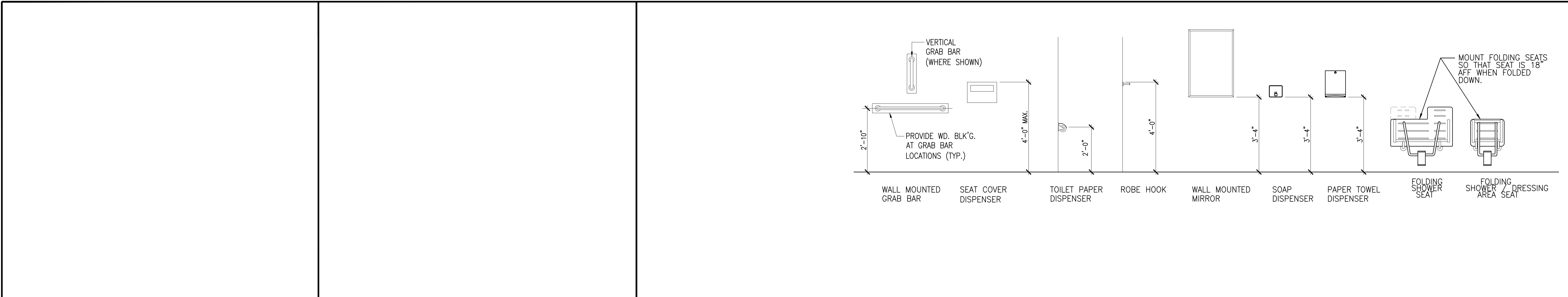


ISSUE FOR BIDDING Revisions: _____ Date: 10/06/2015		CONSULTANTS LEO A DAILY PLANNING ARCHITECTURE ENGINEERING INTERIORS 1201 Connecticut Ave NW Washington DC 20036 USA Tel 202-961-4500 Fax 202-672-3530		EBL ENGINEERS, LLC MECHANICAL • ELECTRICAL • FIRE PROTECTION The Professional Engineering Center 8025 Highland Road, Baltimore, Maryland 21234-5701 (410) 668-9000 FAX (410) 668-5001 e-mail: ebll@earthlink.net		JMT JOHNSON, MIRMIRAN & THOMPSON Engineering A Brighter Future 72 Loveton Circle Sparks, Maryland 21152 phone / 410.329.3100 fax / 410.472.2200		AMT LLC PROFESSIONAL ENGINEERS & LAND SURVEYORS 10 G STREET, NE, SUITE 430 WASHINGTON, DC 20002 PH: (202) 289-4545 FAX: (202) 289-5051		DISTRICT OF COLUMBIA 100943 ARCHITECT ARNOLD I. BHATTI		ARCHITECT MIMAR MIMAR ARCHITECTS, INC. Architecture, Engineering, Design/Build 7004 Security Blvd, Suite #210 Baltimore, MD 21244 Phone: 410-944-4900 Fax: 410-944-8044		Project Title STAIR DETAILS Approved - Project Director APPROVED - BY - NAME APPROVED - BY - TITLE/RANK STATION - MANAGEMENT		Location VAMC WASHINGTON, DC Date APPROVED - DATE Checked BV Drawn JC		Project Number 688-400 Building Number BUILDING #6 Drawing Number AE-604 Dwg. XX of		Office of Construction and Facilities Management Department of Veterans Affairs	
--	--	--	--	--	--	--	--	--	--	--	--	---	--	---	--	--	--	--	--	---	--

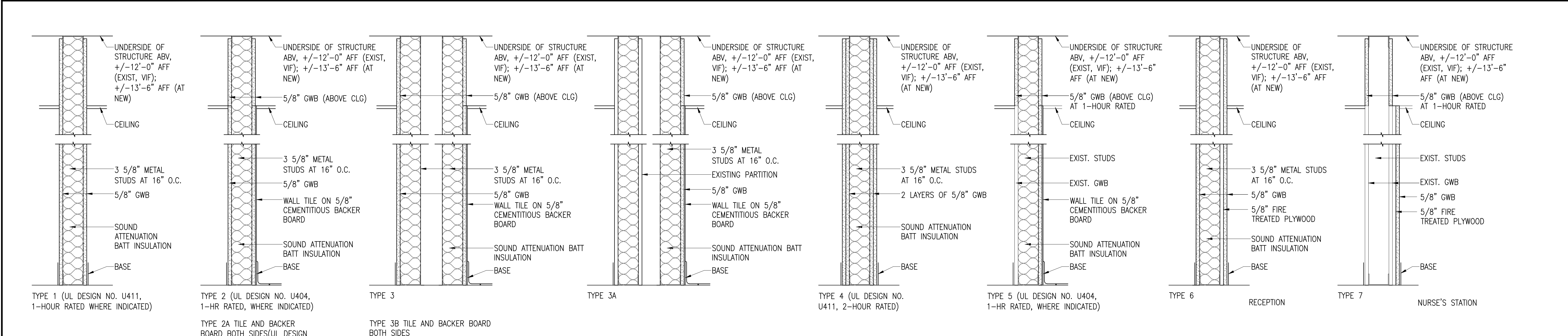




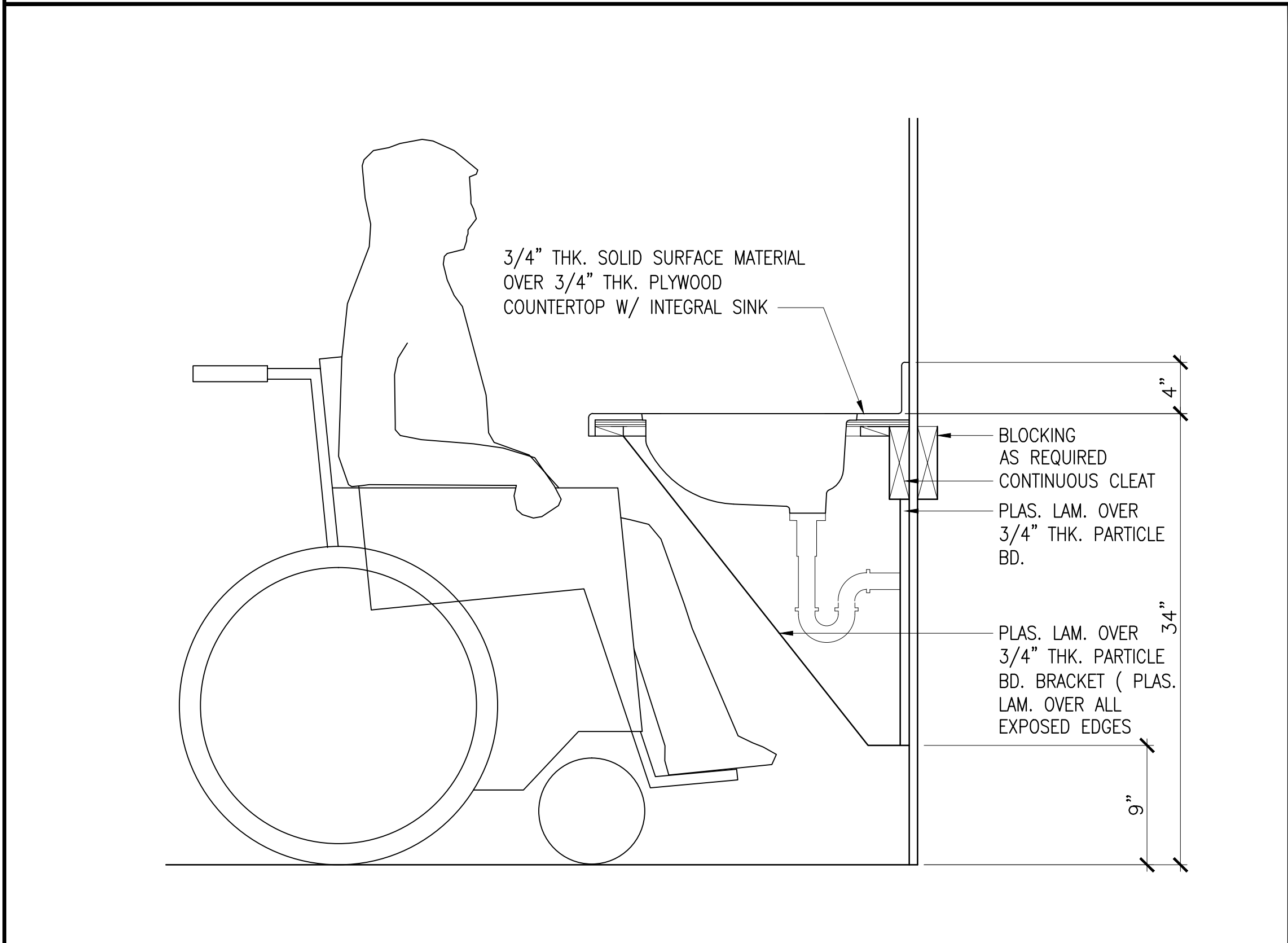
three inches = one foot
one and one half inches = one foot
one inch = one foot
one quarter inch = one foot
one eighth inch = one foot
one quarter inch = one foot
one eighth inch = one foot
one eighth inch = one foot



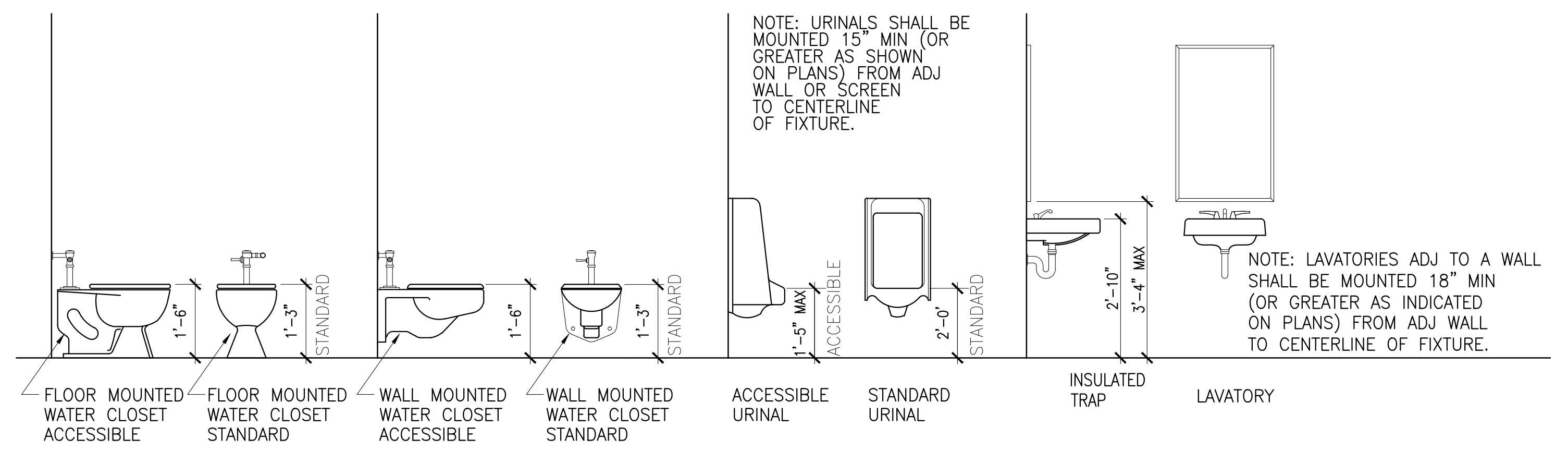
ACCESSORY MOUNTING HEIGHTS		A1
SCALE: 1/2"=1'-0"	REF:	



PARTITION TYPES		B1
SCALE: 1/2"=1'-0"	REF:	



LAVATORY SECTION DETAIL		D4
SCALE: 1/2"=1'-0"	REF:	



PLUMBING FIXTURES MOUNTING HEIGHTS		D1
SCALE: 1/2"=1'-0"	REF:	

CONSULTANTS LEO A DALY PLANNING ARCHITECTURE INTERIORS 1201 Connecticut Ave NW Washington DC 20036 USA Tel 202-861-4600 Fax 202-672-8830		EBL ENGINEERS, LLC MECHANICAL • ELECTRICAL • FIRE PROTECTION The Professional Engineering Center 8025 Harford Road, Baltimore, Maryland 21234-5701 (410) 666-8000 Fax (410) 666-8001 e-mail: ebldesign@earthlink.net Fire Protection • Life Safety • Code Compliance		JMT JOHNSON, MUMFORD & THOMPSON Engineering A Brighter Future 72 Loveton Circle Sparks, Maryland 21152 phone / 410.329.3100 fax / 410.472.2200		AMT L.L.C. PROFESSIONAL ENGINEERS & LAND SURVEYORS 10 G STREET, NE, SUITE 430 WASHINGTON, DC 20002 PH: (202) 289-4545 FAX: (202) 289-5551	DISTRICT OF COLUMBIA KHALID I. BHATTI 100943 LICENSED ARCHITECT	ARCHITECT MINARCH MIMAR ARCHITECTS, INC. Architecture, Engineering, Design/Build 7004 Security Blvd, Suite #210 Baltimore, MD 21244 Phone: 410-944-4900 Fax: 410-944-8044	Drawing Title PARTITION TYPES AND DETAILS Approved Project Director APPROVED - BY - NAME APPROVED - BY - TITLE/RANK STATION - MANAGEMENT	Project Title ADDITION AND RENOVATION OF THE COMMUNITY LIVING CENTER Location VAMC WASHINGTON, DC Date APPROVED - DATE Checked BV Drawn MC	Project Number 688-400 Building Number BUILDING #6 Drawing Number AE-607 Dwg. XX of		Office of Construction and Facilities Management Department of Veterans Affairs	
--	--	---	--	--	--	--	---	---	--	--	--	--	--	--