

LEGEND

---	EXISTING	ABV CLG	ABOVE THIS CEILING
----	EXISTING TO BE REMOVED	BLW FLR	BELOW THIS FLOOR
---F---	FIRE PIPING	(E)	EXISTING
---SPR---	SPRINKLER PIPING	EC	ELECTRICAL CONTRACTOR
---DS---	DRY SPRINKLER PIPING	FC	FIRE PROTECTION CONTRACTOR
---D---	SPRINKLER DRAIN PIPING	PC	PLUMBING CONTRACTOR
---CV---	CHECK VALVE	FHV	FIRE HOSE VALVE
---X---	CONTROL VALVE	FDC	FIRE DEPARTMENT CONNECTION
---ITF---	INSPECTOR'S TEST FITTING	SPR	SPRINKLER
---PG---	PRESSURE GAUGE		
---GFF---	GROUND FACE UNION OR FLANGES		
---WS---	WATERFLOW SWITCH		
---TS---	TAMPER SWITCH		
●	PENDENT SPRINKLER HEAD		
⊙	RECESSED PENDENT SPRINKLER HEAD		
○	UPRIGHT SPRINKLER HEAD		
◁	SIDEWALL SPRINKLER HEAD		

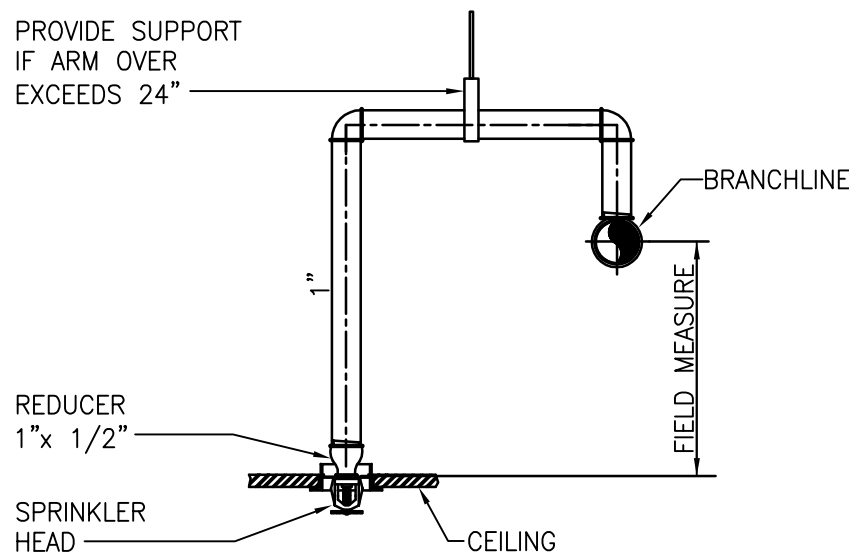
NOTE:
ALL SYMBOLS AND ABBREVIATIONS MAY NOT BE INDICATED ON THE DRAWINGS.

GENERAL NOTES

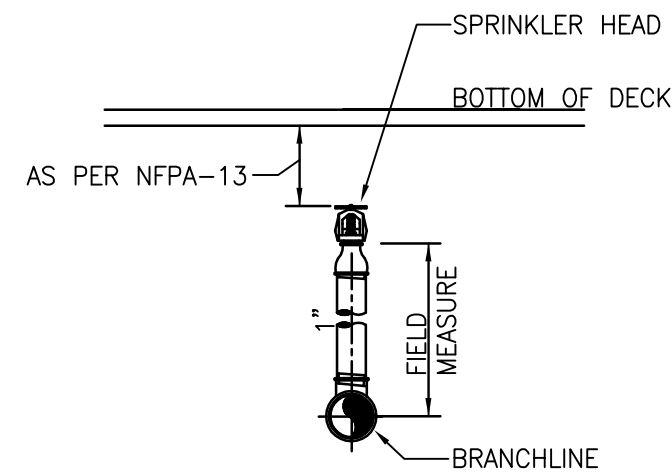
- MODIFY EXISTING SPRINKLER SYSTEM WITHIN THE LIMIT OF CONSTRUCTION AS INDICATED ON THE CONTRACT DRAWINGS FOR THIS PROJECT. UNLESS INDICATED OTHERWISE EXISTING FIRE PROTECTION SYSTEMS AND EQUIPMENT TO REMAIN.
- FIRE PROTECTION SPRINKLER INSTALLATION SHALL MEET THE REQUIREMENTS OF THE FOLLOWING:
A. NFPA 13 AND 14, 2013 ED & 101 ED 2015.
B. LOCAL AND STATE REGULATIONS
C. VA FIRE PROTECTION DESIGN MANUAL; SIXTH ED.; REVISED SEPTEMBER 2011.
- SPRINKLER HEADS SHALL BE FM APPROVED QUICK RESPONSE IN ALL AREAS EXCEPT WHERE SPECIFICALLY PROHIBITED, IN COMPLIANCE WITH VA GUIDELINES AND NFPA REQUIREMENTS.
- SPRINKLERS THROUGHOUT THE BUILDING TO BE ORDINARY TEMPERATURE RATED EXCEPT FOR ELECTRICAL ROOMS/CLOSETS SHALL BE INTERMEDIATE TEMPERATURE RATED HEADS.
- SPRINKLER PIPE SIZES AND SPRINKLER HEAD LOCATIONS SHALL CONFORM TO NFPA REQUIREMENTS. SPRINKLER HEADS INDICATED ON DRAWINGS ARE FOR DESIGN COORDINATION AND BUDGETARY PRICING ONLY.
- PIPE HANGERS INCLUDING SEISMIC PROTECTION TO BE INSTALLED AS REQUIRED BY N.F.P.A. FOR SUPPORTING SPRINKLER PIPING. NO OTHER PIPING AND/OR DEVICES ARE TO BE ATTACHED TO THE SPRINKLER PIPE.
- PIPING SHALL NOT BE LOCATED IN ANY ELECTRICAL ROOMS/CLOSETS OR TELECOMMUNICATION ROOMS/CLOSETS UNLESS THOSE PIPES SERVE ONLY THAT SPACE.
- ALL SPRINKLER PIPE TO MAINTAIN A 6"-0" MIN VERTICAL CLEARANCE FROM TOP OF ELECTRICAL CONTROL PANELS & SWITCHGEAR/TRANSFORMERS.
- SPRINKLER ZONE CONTROL VALVE ASSEMBLY TO CONSIST OF CONTROL VALVE, CHECK VALVE, FLOW SWITCH, SELF-CONTAINED TEST AND DRAIN ASSEMBLY AND PRESSURE GAGE, ON THE SPRINKLER MAIN BRANCH SERVING EACH SMOKE ZONE.
- INSTALL PIPING SO THAT VALVES ARE ACCESSIBLE AND STEMS EXTEND VERTICALLY UP. ALL CONTROL VALVES SHALL BE EQUIPPED WITH TAMPER SWITCHES.
- ALL WATER FLOW SWITCHES MUST BE ISOLATED BY MEANS OF A FITTING OR UNION ON BOTH SIDE TO FACILITATE REMOVAL AND SERVICE OF THE FLOW SWITCH.
- THE FIRE PROTECTION CONTRACTOR SHALL PROVIDE THE QUANTITY OF SPRINKLER HEADS AS REQUIRED TO MAINTAIN THE MINIMUM COVERAGE REQUIRED BY NFPA 13 IS ALL AREAS THE BUILDING.
- COORDINATE THE EXACT LOCATION OF ALL SPRINKLER HEADS, PIPING, EQUIPMENT, AND DEVICES WITH ARCHITECTURAL DRAWINGS AND THE RESPECTIVE DRAWINGS OF PIPING, DUCTWORK, DIFFUSERS, BEAMS, LIGHTS, CEILING MOUNTED EQUIPMENT ETC. THIS CONTRACTOR SHALL VERIFY THE EXACT LOCATION OF THESE COMPONENTS IN THE FIELD AND DOCUMENT ON THEIR SUBMITTALS.
- PROVIDE COMPLETE AND FUNCTIONAL FIRE PROTECTION SYSTEMS FOR THE PROJECT. THE SYSTEMS SHALL CONFORM TO THE SPECIFICATIONS AND AS SHOWN ON DRAWINGS. ITEMS OR WORK NOT SHOWN OR SPECIFIED, BUT REQUIRED FOR COMPLETE SYSTEMS, SHALL BE PROVIDED AND CONFORM TO ACCEPTED TRADE PRACTICES. THE DRAWINGS AND SPECIFICATIONS ARE PRESENTED TO DEFINE SPECIFIC SYSTEM REQUIREMENTS AND SERVE TO EXPAND ON THE PRIMARY CONTRACT REQUIREMENTS OF PROVIDING COMPLETE SYSTEMS. THE DRAWINGS ARE DIAGRAMMATIC AND INDICATE THE GENERAL ARRANGEMENT AND ROUTING OF THE SYSTEMS INCLUDED IN THIS CONTRACTORS WORK.
- THESE DRAWINGS WERE PREPARED FROM INFORMATION TAKEN FROM THE ORIGINAL BUILDING DRAWINGS AND FIELD SURVEY INFORMATION COMPILED BY THE ENGINEERING DESIGN TEAM FOR THE PURPOSE OF ENGINEERING DESIGN CONCEPT. EXISTING CONDITIONS ARE SHOWN AS ACCURATELY AS POSSIBLE. THERE IS THE POSSIBILITY THAT CONDITIONS SHOWN ARE NOT EXACTLY AS EXISTING. CONTRACTOR SHALL VERIFY ALL DIMENSIONS, ELEVATIONS, LOCATIONS, SIZES AND CONDITIONS AT THE SITE AND DOCUMENT THAT ON THEIR SUBMITTALS.
- SPRINKLER CONTRACTOR IS RESPONSIBLE FOR ALL WORK RELATED TO ISOLATING, SHUTTING DOWN, DRAINING, FILLING AND TESTING SYSTEMS TO ALLOW FOR THE COMPLETION OF WORK. INTERRUPTIONS TO EXISTING SERVICES AND SYSTEMS SHALL BE AS SHORT AS POSSIBLE AND AT A TIME AND DURATION APPROVED WITH THE COR. INCLUDE ALL PREMIUM TIME ASSOCIATED WITH THE INTERRUPTIONS. ALL SYSTEM INTERRUPTIONS SHALL BE SCHEDULED WITH THE COR AND COORDINATED WITH OTHER TRADES AT LEAST 48 HOURS IN ADVANCE.
- THE CONTRACTOR WILL BE RESPONSIBLE FOR ENSURING THAT ALL RULES AND REGULATIONS, INCLUDING THOSE WHICH MAY BE ISSUED BY THE OWNER, ARE BEING OBSERVED, PARTICULARLY WORKPLACE SAFETY AND THE CONDUCT OF ALL THOSE EMPLOYED DIRECTLY AND INDIRECTLY BY HIM ON THE PREMISES, AND THE OWNER'S EMPLOYEES WHO MAY BE IMPACTED OR AFFECTED BY CONSTRUCTION ACTIVITIES. THE CONTRACTOR WILL INSTALL SIGNAGE, BARRIERS, AND OTHER MEANS TO PROVIDE WARNING AND PERSONNEL SAFETY. PLACEMENT OF THESE ITEMS WILL BE COORDINATED WITH THE OWNER AND HIS ONGOING OPERATIONS AND WILL PROMPTLY BE RESTORED WHEN WORK IN A PARTICULAR AREA HAS BEEN COMPLETED.
- CONTRACTOR SHALL MAKE ALL NECESSARY SUBMISSIONS AND OBTAIN ALL NECESSARY PERMITS AND APPROVALS PRIOR TO STARTING FABRICATION AND CONSTRUCTION.

FIRE PROTECTION DESIGN CRITERIA

- SYSTEM TYPE; WET PIPE
- SPRINKLER HEAD SPACING AND PIPE SIZING SHALL BE:
a. TOILET ROOMS, TESTING AND OFFICE AREAS; LIGHT HAZARD (0.10 GPM/SQ.FT. OVER 1500 SQ.FT. 225 SQ.FT. PER SPRINKLER HEAD)
b. STORAGE ROOMS; ORDINARY GROUP II HAZARD (0.20 GPM/SQ.FT. OVER 1500 SQ.FT. 130 SQ.FT. PER SPRINKLER HEAD)
- PROVIDE FOR AN ADDITIONAL WATER ALLOWANCE OF 250 GPM FOR INSIDE AND OUTSIDE HOSE STREAMS TO THE SPRINKLER HYDRAULIC REQUIREMENTS.
- THE CALCULATED DEMAND INCLUDING HOSE STREAM REQUIREMENTS SHALL FALL NO LESS THAN 10 PERCENT BELOW THE AVAILABLE WATER SUPPLY.
- SYSTEM SHALL BE DESIGNED ON A HYDRAULICALLY CALCULATED BASIS UTILIZING THE AREA DENSITY METHOD PER THE NFPA 13 BY THE SPRINKLER CONTRACTOR. CALCULATIONS AND SHOP DRAWINGS SHALL BE SIGNED AND SEALED BY A PROFESSIONAL ENGINEER LICENSED IN THE STATE OF NEW YORK.
- SPRINKLER PIPE SIZES SHALL BE DETERMINED BY HYDRAULIC CALCULATIONS BASED ON EXISTING FIRE PUMP HYDRAULIC FLOW TEST DATA (SEE VAMC-SYRACUSE FOR CURRENT PUMP TEST DATA PRIOR TO START OF WORK):
 - DATE: - OCTOBER 28, 2013
 - SUCTION PRESSURE - 45 PSIG
 - DISCHARGE PRESSURE - 180 PSIG
 - RATED FIRE PUMP FLOW - 1000 GPM



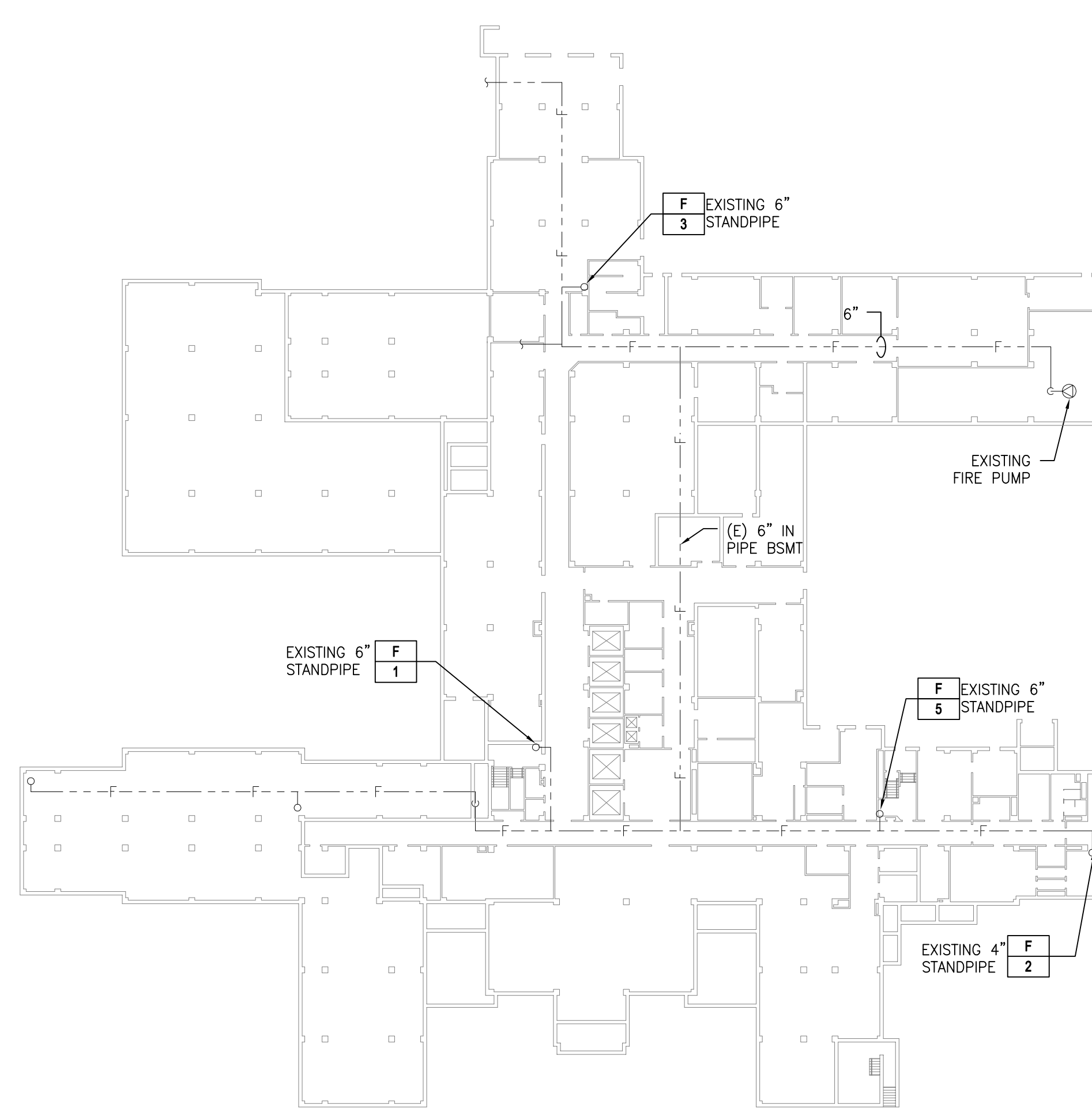
2 TYPICAL DROP PENDENT DETAIL
NOT TO SCALE



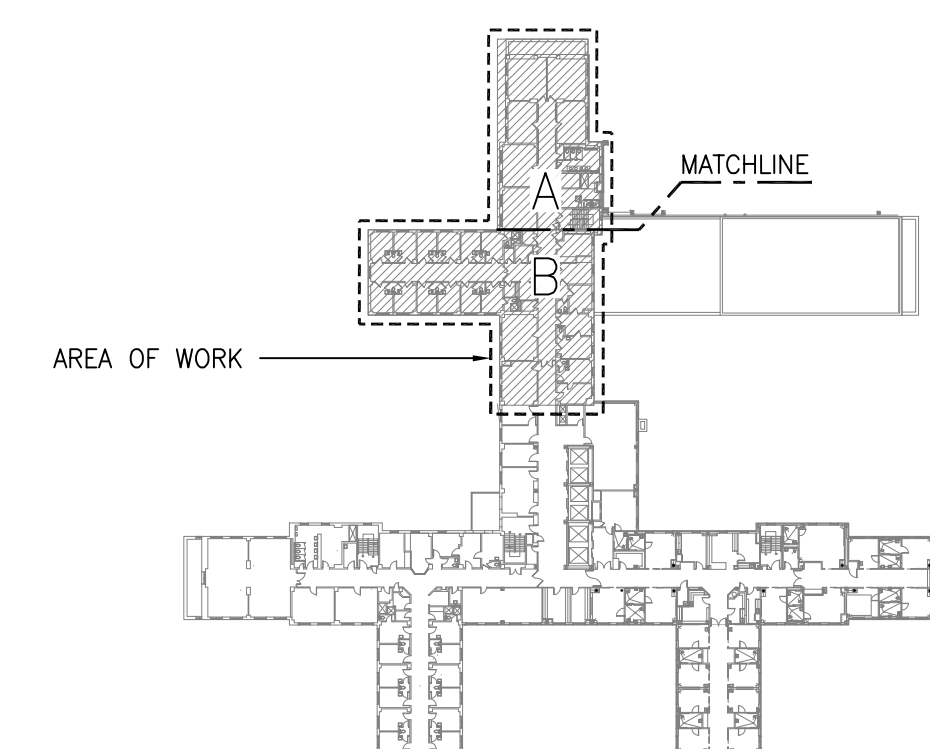
1 TYPICAL UPRIGHT/SPRIG DETAIL
NOT TO SCALE

100% FOR CONSTRUCTION
FULLY SPRINKLERED

<div>Revisions</div> <table><tr><td> </td><td> </td></tr><tr><td> </td><td> </td></tr><tr><td> </td><td> </td></tr><tr><td> </td><td> </td></tr></table>									<div>Miller-Remick LLC</div> <div>M.E.P. & Structural Engineering A Service Disabled Veteran Owned Small Business</div> <div>1010 KINGS HIGHWAY SOUTH CHERRY HILL, NEW JERSEY 08034 PHONE: (856)429-4000 FAX: (856)429-5002</div> <div></div> <div></div> <div><div>QPK DESIGN</div><div>ARCHITECTURE</div><div>ENGINEERING</div><div>SITE & PLANNING</div></div> <div>400 S. MAIN STREET SYRACUSE, NEW YORK 13201-0029 TEL: 315.475.7800 FAX: 315.475.7800</div> <div>OPK Job Number:</div>	<div>MILLER-REMICK LLC</div> <div>PROFESSIONAL ENGINEER</div> <div></div>	Reviewed: Facility Manager	<div>Drawing Title</div> <div>FIRE PROTECTION NOTES, LEGEND AND DETAILS</div> <div>Approved: Project Director</div>	Project Title			Date	<div>VA HEALTHCARE NETWORK</div> <div>UPSTATE NEW YORK</div> <div>Department of Veterans Affairs</div>
Reviewed: Facility Director	RENOVATION FOR 6C			Project No.													
Reviewed:	Building Number	Checked	Drawn	DRAWING NO.													
Reviewed:	Location	MC	PD	FX-001													
VAMC SYRACUSE, NY				Dwg. 68 Of 74													

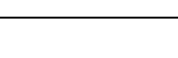
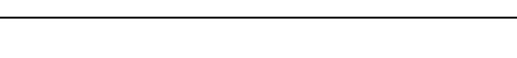
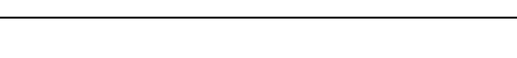




2 BASEMENT FLOOR PLAN
SCALE: 1/32" = 1'-0"
FINSH FL EL = 118.08'



KEY PLAN
SCALE: NONE

**100% FOR CONSTRUCTION
FULLY SPRINKLERED**

 <p>Miller-Remick LLC M.E.P. & Structural Engineering A Service Disabled Veteran Owned Small Business</p> <p>1010 KINGS HIGHWAY SOUTH CHERRY HILL, NEW JERSEY 08034 PHONE: (856)429-4000 FAX: (856)429-5002</p>	 <p>SDVOSS C.V.E.</p>	 <p>QPK DESIGN ARCHITECTURE ENGINEERING SITE & PLANNING</p> <p>450 SO. ALBANY STREET STANFORD, NEW YORK 12083 PHONE: (518) 352-7800 FAX: (518) 352-7800</p> <p>QPK Job Number:</p>	<p>MILLER-REMICK LLC PROFESSIONAL ENGINEER</p> 	<p>Reviewed: Facility Manager</p> <p>Reviewed: Facility Director</p>	<p>Drawing Title</p> <p>FIRE PROTECTION 6TH FLOOR PLAN</p>	<p>Project Title</p> <p>RENOVATION FOR 6C</p>	<p>Date</p> <p>12-04-2015</p> <p>Project No.</p> <p>528A7-14-719</p>	<p>DRAWING NO.</p> <p>FX-101</p> <p>Dwg 69 Of 74</p>	 <p>VA HEALTHCARE NETWORK UPSTATE NEW YORK</p>	<p>Department of Veterans Affairs</p>
<p>Approved: Project Director</p>	<p>Building Number</p> <p>NO. 1</p>	<p>Checked</p> <p>MC</p>	<p>Drawn</p> <p>PD</p>	<p>Location</p> <p>VAMC SYRACUSE, NY</p>	<p>Reviewed:</p>	<p>Reviewed:</p>	<p>Reviewed:</p>	<p>Reviewed:</p>	<p>Reviewed:</p>	<p>Reviewed:</p>