

CONCRETE FOOTING SCHEDULE												
MARK	WIDTH	LENGTH	DEPTH	REINFORCING CROSSWISE				REINFORCING LENGTHWISE				COMMENTS
				NO.	SIZE	LENGTH	SPACING	NO.	SIZE	LENGTH	SPACING	
FC2.0	2'-0"	CONT.	12"	-	#4	1'-0"	48"	3	#5	CONT.	EQ.	REINFORCE TOP AND BOTTOM
FC2.0A	2'-0"	CONT.	12"	-	#4	1'-0"	48"	3	#5	CONT.	EQ.	REINFORCE TOP AND BOTTOM
FC2.5	2'-0"	CONT.	12"	-	#4	2'-0"	48"	3	#5	CONT.	EQ.	REINFORCE TOP AND BOTTOM
FC3.0	3'-0"	CONT.	12"	-	#4	2'-0"	48"	3	#5	CONT.	EQ.	REINFORCE TOP AND BOTTOM
FC4.0	4'-0"	CONT.	18"	-	#5	2'-0"	18"	6	#7	CONT.	EQ.	TOP MAT REINFORCING
FC4.0	4'-0"	CONT.	18"	-	#5	3'-0"	18"	6	#7	CONT.	EQ.	BOTTOM MAT REINFORCING
FC5.0	5'-0"	CONT.	24"	-	#5	4'-0"	14"	9	#7	CONT.	EQ.	TOP MAT REINFORCING
FC5.0	5'-0"	CONT.	24"	-	#5	4'-0"	14"	9	#7	CONT.	EQ.	BOTTOM MAT REINFORCING
FC6.0	6'-0"	CONT.	18"	-	#5	5'-0"	18"	6	#7	CONT.	EQ.	TOP MAT REINFORCING
FC6.0	6'-0"	CONT.	18"	-	#5	5'-0"	18"	6	#7	CONT.	EQ.	BOTTOM MAT REINFORCING
FC7.0	7'-0"	CONT.	30"	-	#5	6'-0"	18"	9	#7	CONT.	EQ.	TOP MAT REINFORCING
FC7.0	7'-0"	CONT.	30"	-	#5	6'-0"	18"	9	#7	CONT.	EQ.	BOTTOM MAT REINFORCING
FC8.0	8'-0"	CONT.	24"	-	#6	7'-0"	18"	10	#7	CONT.	EQ.	TOP MAT REINFORCING
FC8.0	8'-0"	CONT.	24"	-	#6	7'-0"	18"	10	#7	CONT.	EQ.	BOTTOM MAT REINFORCING
FC8.0A	8'-0"	CONT.	19"	-	#6	7'-0"	11"	9	#7	CONT.	EQ.	REINFORCE TOP AND BOTTOM
FS3.0	3'-0"	3'-0"	12"	3	#5	2'-0"	EQ.	3	#5	2'-0"	EQ.	
FS3.5	3'-0"	3'-0"	12"	3	#5	3'-0"	EQ.	3	#5	3'-0"	EQ.	
FS4.0	4'-0"	4'-0"	12"	4	#5	3'-0"	EQ.	4	#5	3'-0"	EQ.	
FS4.5	4'-0"	4'-0"	12"	4	#5	4'-0"	EQ.	4	#5	4'-0"	EQ.	
FS5.0	5'-0"	5'-0"	12"	5	#5	4'-0"	EQ.	5	#5	4'-0"	EQ.	
FS5.5	5'-0"	5'-0"	14"	6	#5	5'-0"	EQ.	6	#5	5'-0"	EQ.	
FS6.0	6'-0"	6'-0"	15"	7	#5	5'-0"	EQ.	7	#5	5'-0"	EQ.	
FS6.5	6'-0"	6'-0"	16"	8	#5	6'-0"	EQ.	8	#5	6'-0"	EQ.	
FS7.0	7'-0"	7'-0"	17"	7	#6	6'-0"	EQ.	7	#6	6'-0"	EQ.	
FS7.5	7'-0"	7'-0"	18"	8	#6	7'-0"	EQ.	8	#6	7'-0"	EQ.	
FS8.0	8'-0"	8'-0"	18"	9	#6	7'-0"	EQ.	9	#6	7'-0"	EQ.	
FS8.5	8'-0"	8'-0"	20"	7	#7	8'-0"	EQ.	7	#7	8'-0"	EQ.	
FS9.0	9'-0"	9'-0"	22"	8	#7	8'-0"	EQ.	8	#7	8'-0"	EQ.	
FS10.0	11'-0"	11'-0"	25"	9	#8	10'-0"	EQ.	9	#8	10'-0"	EQ.	
FS17.0	17'-0"	17'-0"	32"	14	#9	16'-0"	EQ.	14	#9	16'-0"	EQ.	
FS17.5	17'-0"	17'-0"	33"	15	#9	17'-0"	EQ.	15	#9	17'-0"	EQ.	
FS18.5	18'-0"	18'-0"	36"	15	#9	18'-0"	EQ.	15	#9	18'-0"	EQ.	

- CONCRETE FOOTING NOTES:
1. PLACE ALL FOOTING REINFORCING IN THE BOTTOM OF THE FOOTING WITH 3" CLEAR CONCRETE COVER (UNO).
 2. TOP REINFORCING, WHERE OCCURS, SHALL BE PLACED IN THE TOP OF THE FOOTING WITH 2" MINIMUM CONCRETE COVER.
 3. IF FOOTINGS ARE EARTH-FORMED, FOOTINGS SHALL BE 6" LONGER AND WIDER THAN SCHEDULED.
 4. RUN CONTINUOUS FOOTING REINFORCEMENT THROUGH SPOT FOOTINGS.
 5. SEE GENERAL STRUCTURAL NOTES FOR ADDITIONAL REQUIREMENTS.
 6. SOME SCHEDULED FOOTINGS MAY NOT BE USED. SEE FOOTING AND FOUNDATION PLAN FOR FOOTING MARKS.

1 CONCRETE FOOTING SCHEDULE

NO SCALE

CONCRETE REINFORCING BAR LAP SPlice SCHEDULE												
BAR SIZE	F _c = 3000psi		F _c = 4000psi & F _c = 4500 psi		F _c = 5000psi		F _c = 6000psi		F _c = 6000psi		F _c = 6000psi	
	REGULAR		REGULAR		REGULAR		REGULAR		REGULAR		REGULAR	
	CLASS	CLASS	CLASS	CLASS	CLASS	CLASS	CLASS	CLASS	CLASS	CLASS	CLASS	CLASS
	A	B	A	B	A	B	A	B	A	B	A	B
#3	13"	17"	17"	21"	12"	16"	16"	21"	12"	16"	16"	21"
#4	17"	22"	22"	28"	15"	19"	19"	25"	13"	17"	17"	22"
#5	21"	27"	27"	35"	18"	24"	24"	31"	16"	21"	21"	27"
#6	27"	36"	36"	46"	24"	31"	31"	40"	21"	28"	28"	36"
#7	37"	49"	49"	63"	32"	42"	42"	54"	28"	38"	38"	49"
#8	49"	64"	64"	82"	42"	55"	55"	71"	38"	50"	50"	64"
#9	62"	80"	80"	104"	54"	70"	70"	89"	48"	62"	62"	80"
#10	78"	102"	102"	132"	68"	88"	88"	115"	61"	79"	79"	102"
#11	96"	125"	125"	162"	83"	108"	108"	141"	74"	97"	97"	125"

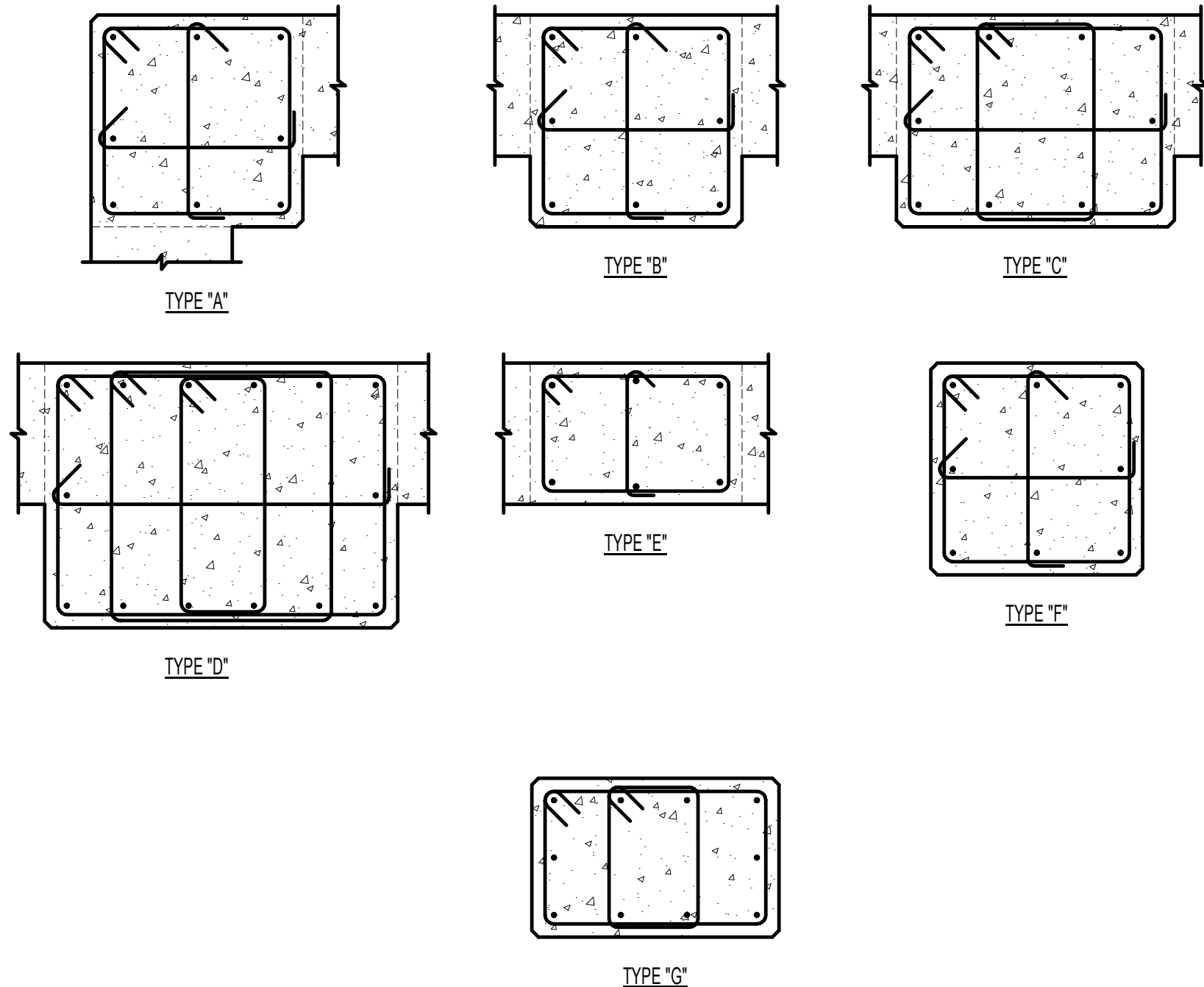
- CONCRETE REINFORCING BAR LAP SPlice NOTES:
1. THIS SCHEDULE SHALL BE USED FOR ALL BAR SPICES IN CONCRETE WALLS, UNLESS NOTED OTHERWISE.
 2. CLASS 'A' SPICES MAY BE USED ONLY IN CASES WHERE 50% OR LESS OF THE BARS ARE SPICED WITHIN THE LAP SPICE LENGTH.
 3. CLASS 'B' SPICES SHALL BE USED FOR ALL SPICES UNLESS THE REQUIREMENTS OF NOTE NO. 2 ABOVE ARE MET.
 4. TIES AND STIRRUPS SHALL NOT BE SPICED.
 5. DO NOT SPICE VERTICAL BARS IN RETAINING WALLS UNLESS SPECIFICALLY SHOWN.
 6. SPICES FOR BUNDLED BARS:
 - a. FOR BUNDLED BARS OF THREE OR LESS, LAP SPICE LENGTHS SHALL BE MULTIPLIED BY 1.2.
 - b. FOR BUNDLED BARS OF FOUR OR MORE, LAP SPICE LENGTHS SHALL BE MULTIPLIED BY 1.33.
 - c. INDIVIDUAL BAR SPICES WITHIN A BUNDLE SHALL NOT OVERLAP.
 - d. ENTIRE BUNDLES SHALL NOT BE LAP SPICED.
 7. FOR ALL LIGHTWEIGHT CONCRETE, LAP LENGTHS SHALL BE MULTIPLIED BY 1.3.
 8. FOR ALL EPOXY COATED BARS, LAP LENGTHS SHALL BE MULTIPLIED BY 1.3 FOR TOP BARS AND 1.5 FOR REGULAR BARS.
 9. TOP BARS ARE CLASSIFIED AS HORIZONTAL BARS WHERE 12" OR MORE, OF FRESH CONCRETE IS CAST BELOW THE REINFORCING BAR.
 10. SEE GENERAL STRUCTURAL NOTES FOR ADDITIONAL REQUIREMENTS.

3 CONCRETE REINFORCING BAR LAP SPlice SCHEDULE

NO SCALE

MARK	PIER SIZE	REINFORCING		TYPE	COMMENTS
		VERTICAL	TES		
CP-19A2A	18'x28'	(10) #5 BARS	(2) #5 AT 8" O.C.	G	
CP-25A	18'x42"	(8) #5 BARS	(2) #5 AT 8" O.C.	E	
CP-34A	24'x24"	(8) #5 BARS	(3) #5 AT 8" O.C.	A	
CP-34B	24'x24"	(8) #5 BARS	(3) #5 AT 8" O.C.	B	
CP-24C	24'x24"	(8) #5 BARS	(3) #5 AT 8" O.C.	F	
CP-24D3A	24'x36"	(10) #5 BARS	(3) #5 AT 8" O.C.	C	
CP-26D3A	28'x36"	(14) #5 BARS	(4) #5 AT 8" O.C.	D	
CP-30D3A	30'x40"	(14) #5 BARS	(4) #5 AT 8" O.C.	D	
CP-30A	30'x30"	(8) #7 BARS	(3) #5 AT 8" O.C.	A	
CP-30B	30'x30"	(8) #7 BARS	(3) #5 AT 8" O.C.	B	

- CONCRETE PIER NOTES:
1. INSTALL (3) SETS OF TIES WITHIN TOP 5" OF ALL PIERS (UNO).
 2. RUN HORIZONTAL CONCRETE WALL REINFORCING CONTINUOUS THROUGH PIER WHEN PIER IS POURED MONOLITHICALLY WITH CONCRETE WALL.
 3. SEE GENERAL STRUCTURAL NOTES FOR ADDITIONAL REQUIREMENTS.



4 CONCRETE PIER SCHEDULE

NO SCALE

VENEER LINTEL SCHEDULE	
CLEAR OPENING	SIZE OF ANGLE
UP TO 5'-0"	L3 102x114 (LLH)
5'-1" TO 7'-0"	L3 102x 12x114
7'-1" TO 9'-0"	L5x3 12x114 (LLV)
9'-1" TO 10'-0"	L5x2 12x5x16 (LLV)
10'-1" TO 11'-0"	L5x3 12x38 (LLV)
11'-1" TO 12'-0"	L5x4x38 (LLV)
12'-1" AND OVER	REQUIRES SPECIAL ANALYSIS

- NOTE:
- LINELS CARRY VENEER ONLY. WHERE FLOORS, ROOFS, OR CONCENTRATED LOADS OCCUR, FURTHER ANALYSIS IS NECESSARY. PROVIDE 1" OF BEARING AT EACH END FOR EACH FOOT OF SPAN. MINIMUM BEARING OF 6" EACH SIDE OF OPENING. USE THIS SCHEDULE UNLESS NOTED OTHERWISE. STEEL ANGLES SHALL BE GALVANIZED AT EXTERIOR CONDITIONS.

5 VENEER LINTEL SCHEDULE

NO SCALE

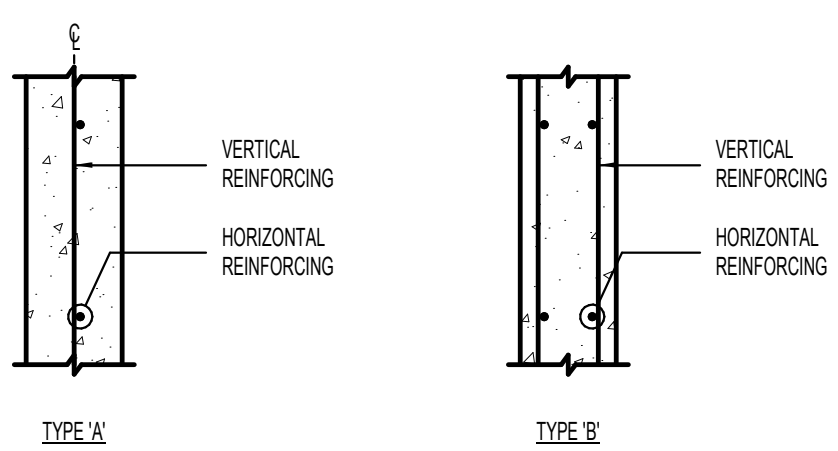
CONCRETE WALL SCHEDULE					
MARK	THICKNESS	REINFORCING		WALL TYPE	COMMENTS
		VERTICAL	HORIZONTAL		
CW-10A	10"	#5 AT 18" O.C.	#5 AT 12" O.C.	(1) #5	A
CW-13A	13"	#4 AT 18" O.C. E.F.	#4 AT 12" O.C. E.F.	(2) #5	B
CW-14A	14"	#4 AT 18" O.C. E.F.	#5 AT 18" O.C. E.F.	(2) #5	B
CW-16A	16"	#5 AT 18" O.C. E.F.	#4 AT 18" O.C. E.F.	(2) #5	B
CW-18A	18"	#5 AT 18" O.C. E.F.	#5 AT 12" O.C. E.F.	(2) #5	B
CW-20A	20"	#5 AT 18" O.C. E.F.	#5 AT 12" O.C. E.F.	(2) #5	B

- CONCRETE FOUNDATION WALL NOTES:
1. SEE GENERAL STRUCTURAL NOTES FOR ADDITIONAL REQUIREMENTS.
 2. CONCRETE FOUNDATION WALLS NOT DESIGNATED ON PLANS SHALL BE REINFORCED AS FOLLOWS:

ABBREVIATIONS:
E.F. - EXCH FACE
I.F. - INSIDE FACE
O.F. - OUTSIDE FACE

THICKNESS	VERTICAL REINFORCING	HORIZONTAL REINFORCING
6"	#4 BARS AT 18" O.C.	#4 BARS AT 12" O.C.

WALL REINFORCING PLACEMENT TYPES:



2 CONCRETE WALL SCHEDULE

NO SCALE

CONSULTANTS:



324 S. State St., Suite 400
Salt Lake City, UT 84111
800-678-7077, 801-328-5151
fax: 801-328-5155
www.spectrum-engineers.com



2766 S. Main Street
Salt Lake City, Utah 84115
801-355-8659
bhb@bhbengineers.com

ARCHITECT / ENGINEERS:



17 Exchange Place
801 463.7108

Salt Lake City, UT 84111
www.tsa-usa.com

1490 S. Price Road, Suite 302, Chandler, AZ 85286
office: (480) 244-3355
www.engineeredwithlayton.com

SEAL:



Drawing Title

STRUCTURAL SCHEDULES

Approved: Project Director

Project Title

URGENT CARE AND SUPPORT EXPANSION

Location

VAMC SALT LAKE CITY, UTAH 84148

Date

08-11-2015

Checked

CH

Drawn

AMM

Project Number

660-332

Building Number

1

Drawing Number

S601

Dwg. 36 of 197

Office of
Construction
and Facilities
Management

