

LIMITED ASBESTOS SURVEY REPORT

Renovate 3A for Gastroenterology and Pulmonary Project 573-15-102 Malcom Randall VA Medical Center Gainesville, FL

GLE Project No.: 16950-00371

Prepared for:

**Mr. Randy Hensley, P.E.
AKEA, Inc.
3603 NW 98th Street
Suite B
Gainesville, Florida 32606**

March 2016

Prepared by:



8659 Baypine Road, Suite 306, Jacksonville, FL 32256
904-296-1880 • Toll Free 800-398-7613 • Fax 904-296-1860



GLE

ARCHITECTS | ENGINEERS | ENVIRONMENTALS CONSULTANTS

March 31, 2016

Mr. Randy Hensley, P.E.
AKEA, Inc.
3603 NW 98th Street, Suite B
Gainesville, Florida 32606

**RE: Limited Asbestos Survey Report
Renovate 3A for Gastroenterology and Pulmonary
Project 573-15-102
Malcom Randall VA Medical Center
Gainesville, FL**

GLE Project No.: 16950-00371

Dear Mr. Hensley:

GLE Associates, Inc. (GLE) performed a limited survey for asbestos-containing materials (ACM) on March 14, 15, and 16, 2016, at the Malcom Randall VA Medical Center, located in Gainesville, Florida. The survey was performed by Mr. Michael D. Harrell and Mr. Matthew Miller with GLE. This report outlines the sampling and testing procedures, and presents the results along with our conclusions and recommendations.

GLE appreciates the opportunity to serve as your consultant on this project. If you should have any questions, or if we can be of further service, please do not hesitate to call.

Sincerely,
GLE Associates, Inc.

Michael D. Harrell
Environmental Scientist

Robert B. Greene, PE, PG, CIH, LEED AP
President
Asbestos Consultant, EA 0000009

MDH/MLM/RBG/lr

M:\Work Asb\16950-VA\00371-Renovate 3A & 3B\Asbestos SurveyReport.doc

GLE Associates, Inc.

8659 Baypine Road | Suite 306 | Jacksonville, FL 32256 | 904-296-1880 | Fax 904-296-1860 | www.gleassociates.com
Orlando | Ft. Lauderdale | Miami | Jacksonville | Gainesville | Atlanta | Nashville
Architecture AA 0002369 • Engineer CA 5483 • Asbestos ZA 0000034 • Geology 0000297

TABLE OF CONTENTS

1.0	INTRODUCTION	1
1.1	Introduction	1
1.2	Facility Description	1
2.0	RESULTS	2
2.1	Asbestos Survey Procedures	2
2.2	Identified Suspect Asbestos-Containing Materials	3
	Table 2.2-1 — Summary of Homogeneous Sampling Areas	
3.0	CONCLUSIONS AND RECOMMENDATIONS	6
3.1	General	6
3.2	Specific	7
4.0	LIMITATIONS AND CONDITIONS	8

APPENDICES

- Appendix A – Analytical Results and Chain of Custody
- Appendix B – Personnel and Laboratory Certifications
- Appendix C – Asbestos Location Plans
- Appendix D – Photographs

1.0 INTRODUCTION

1.1 INTRODUCTION

The purpose of this limited survey was to identify accessible asbestos-containing materials (ACMs) and their general locations within Malcom Randall VA Medical Center, located at 1601 SW Archer Road, in Gainesville, FL. The scope of the survey was limited to the 3A Gastroenterology and Pulmonary areas of the facility, as shown in the client provided drawings. Access to plenum spaces in corridors and patient rooms was limited at the time of the survey. The survey was conducted pursuant to National Emission Standards for Hazardous Air Pollutants (NESHAP, 40 CFR 61) requirements, associated with the scheduled renovation plans. The survey was performed on March 14, 15, and 16, 2016, by Mr. Michael D. Harrell and Mr. Matthew Miller Environmental Protection Agency/Asbestos Hazard Emergency Response Act (EPA/AHERA) accredited inspectors. The scope of this survey did not include demolition of any building components, evaluation of architectural plans, or removal cost estimating.

1.2 FACILITY DESCRIPTION

A summary of the facility investigated is outlined in the table below.

Facility Type:	Hospital
Construction Date:	1967
Number of Floors:	1 in scope
Structural	
Foundation:	Concrete Slab
Wall Support:	Concrete Block
Exterior Finish:	Paint, Brick
Roof Support:	Not in Scope
Roof System Type:	Not in Scope
Mechanical/Plumbing	
HVAC Type:	Cooling Tower/Chiller
Duct Type:	Metal, Flex
Pipe Insulation:	Fiberglass
Interior	
Wall Substrate:	Drywall and Joint Compound, Plaster
Wall Finishes:	Paint, Cove Base, Wallpaper
Floor Substrate:	Concrete
Floor Finishes:	Vinyl Floor Tile, Ceramic Tile, Carpet
Ceiling System:	Drywall and Joint Compound, Suspended Ceiling System
Ceiling Finishes:	Paint, Suspended Ceiling Tiles

2.0 RESULTS

2.1 ASBESTOS SURVEY PROCEDURES

The limited survey was performed by visually observing accessible areas of the building. EPA/AHERA accredited inspectors performed the visual observations (refer to **Appendix B** for personnel qualifications).

After the overall visual survey was completed, representative sampling areas were determined. The surveyors delineated homogeneous areas of suspect materials and samples of each material were obtained, in general accordance with regulations as established by the Occupational Safety and Health Administration (OSHA) and NESHAP. The field surveyors determined sample locations based on previous experience. Both friable and non-friable materials were sampled. A friable material is one that can be crushed when dry by normal hand pressure. This survey did not include the demolition of building components to access suspect material.

After completion of the fieldwork, the samples were delivered to GLE's National Voluntary Laboratory Accreditation Program (NVLAP) accredited laboratory for analysis. The samples were analyzed by Polarized Light Microscopy (PLM) coupled with dispersion staining, in general accordance with EPA-600/R-93/116. Utilizing this procedure, the various asbestos minerals (chrysotile, amosite, crocidolite, actinolite, tremolite, and anthophyllite) can be determined. The percentages of asbestos minerals in the samples were visually determined by the microscopist. Please note that the EPA designates all materials containing greater than 1% asbestos as an "asbestos-containing material" (ACM).

Regulated Asbestos-Containing Material (RACM) is defined as (a) Friable asbestos materials, (b) Category I non-friable ACM that has become friable, (c) Category I non-friable ACM that will be or has been subjected to sanding, grinding, cutting, or abrading, or (d) Category II non-friable ACM that has a high probability of becoming or has become crumbled, pulverized, or reduced to powder by the forces expected to act on the material in the course of demolition or renovation operations regulated by this subpart.

Category I and Category II non-friable ACM, as defined by the EPA:

- Category I non-friable ACM means asbestos containing packings, gaskets, resilient floor covering, asphalt roofing products, and pliable sealants and mastics that are in good condition and not friable, containing more than 1 percent asbestos, as determined using the method specified in Appendix E, Subpart E, 40 CFR Part 763, Section 1, PLM.
- Category II non-friable ACM means any material, excluding Category I non-friable ACM, containing more than 1 percent asbestos as determined using the methods specified in Appendix E, Subpart E, 40 CFR Part 763 Section 1, PLM that, when dry, cannot be crumbled, pulverized, or reduced to powder by hand pressure.

2.2 IDENTIFIED SUSPECT ASBESTOS-CONTAINING MATERIALS

A total of ninety-three (93) samples of suspect building materials were collected from the facility during the survey, representing thirty-one (31) different homogeneous areas. The results of the laboratory analyses are included in **Appendix A**, and approximate sample locations and the approximate extent to which ACM was observed to be present are indicated on the Asbestos Location Plans in **Appendix C**. Photographs of the various materials sampled are included in **Appendix D**.

Due to the damage that could be caused by destructive sampling techniques and restricted accessibility, the following materials were assumed to contain asbestos minerals and were not sampled:

1. Vibration Dampers;
2. Black Vapor Barrier;
3. Fire Doors.

A summary of the homogenous sampling areas of suspect ACM determined to be present is outlined in the following table:

TABLE 2.2-1: SUMMARY OF HOMOGENEOUS SAMPLING AREAS RENOVATE 3A FOR GASTROENTEROLOGY AND PULMONARY MALCOM RANDALL VA MEDICAL CENTER – GAINESVILLE, FLORIDA							
HA #	HOMOGENEOUS MATERIAL DESCRIPTION	HOMOGENEOUS MATERIAL LOCATION	FRIABILITY (F/NF)	% ASBESTOS*	# OF SAMPLES COLLECTED	APPROXIMATE QUANTITY	ACM CATEGORY
CT-01	2' x 2' White Fissured Ceiling Tiles	Corridors, A300-1 Suite, A304-1, A320-1, A320B-1, and A338-1	F	ND	3	NIS	NA
CT-02	2' x 4' White Fissured Ceiling Tiles	Recovery and GI Suites, Southern Rooms	F	ND	3	NIS	NA
DW-01	Drywall with Joint Compound	Various Hard Ceilings	NF	Drywall–ND Joint Compound–5%C Composite–<1%C	3	1,650 SF	NA
DW-02	Drywall with Joint Compound	Walls in Suite A300-1, A304-1, A326-1, and GI Suite Dividing Walls	NF	ND	3	NIS	NA
FT-01	12" x 12" White Floor Tile with Tan Mastic	Northern Rooms, and Rooms A366B-1, A366C-1, A337-1 and A337C-1	NF	ND	3	NIS	NA
FT-02	12" x 12" Tan Floor Tile with Tan Mastic	Corridors	NF	ND	3	NIS	NA
FT-03	12" x 12" Orange/Brown Floor Tile with Tan Mastic	Corridor Accents	NF	ND	3	NIS	NA
FT-04	12" x 12" Green Floor Tile with Tan Mastic	Corridor Accents	NF	ND	3	NIS	NA
M-01	Gray Caulk	Windows	NF	ND	3	NIS	NA
M-02	Ceramic Tile Grout	Bathrooms	NF	ND	3	NIS	NA
M-03	Locker Panels	Lockers Throughout	NF	ND	3	NIS	NA
M-04	Red Fire Stop	Various Walls	NF	ND	3	NIS	NA
M-05	Black Gasket	Duct by A320-1	NF	ND	3	NIS	NA

ASBESTOS CONTENT Expressed as percent	* = The facility owner has the option of point-counting by polarized light microscopy (PLM) those RACM whose asbestos content is less than 10% in order to more accurately determine the asbestos content therein.					
	PC = Results based on Point-Count analysis					
FRIABILITY	F = Friable Material	NF = Non-Friable Material				
ACM CATEGORY	RACM = Regulated ACM	CAT I = Category I non-friable ACM				
ABBREVIATIONS:	NA = Not Applicable	ND = None Detected		CAT II = Category II non-friable ACM		
	HA = Homogeneous Area	SF = Square Feet		NIS = Not in Scope		
				C = Chrysotile		
				LF = Linear Feet		
				CF = Cubic Feet		

TABLE 2.2-1: SUMMARY OF HOMOGENEOUS SAMPLING AREAS RENOVATE 3A FOR GASTROENTEROLOGY AND PULMONARY MALCOM RANDALL VA MEDICAL CENTER – GAINESVILLE, FLORIDA							
HA #	HOMOGENEOUS MATERIAL DESCRIPTION	HOMOGENEOUS MATERIAL LOCATION	FRIABILITY (F /NF)	% ASBESTOS*	# OF SAMPLES COLLECTED	APPROXIMATE QUANTITY	ACM CATEGORY
M-06	Brown Fire Stop	Various Walls	NF	ND	3	NIS	NA
M-07	Pink Fire Stop	At A338A-1	F	ND	3	NIS	NA
M-08	Gray Sink Insulation	Rooms A325-1, A334-1, A334B-1, A335-1, and A335A-1	NF	ND	3	NIS	NA
MAS-01	Black Mastic	Radiant Heat Elbows	NF	10% C	3	600 SF	CAT. I
MAS-02	Tan HVAC Duct Mastic	Insulation on HVAC Ductwork	NF	ND	3	NIS	NA
MAS-03	Black Mastic	Seams Under Wrap on Radian Heat Piping	NF	ND	3	NIS	NA
MAS-04	Tan Mastic	Locker Exhaust Ducts	NF	ND	3	NIS	NA
MAS-05	Black Mastic	Domestic Hot Water Piping	NF	10% C	3	700 LF	CAT. I
MAS-06	Tan Mastic	Pneumatic Tube Mastic	NF	ND	3	NIS	NA
MAS-07	White Mastic	HVAC Ducts: NW Suite, A320B-1, and A336C-1	NF	ND	3	NIS	NA
MAS-08	Gray Mastic	Various Metal Ducts	NF	ND	3	NIS	NA
MAS-09	Tan Mastic	Square Metal Ducts	NF	ND	3	NIS	NA
MAS-10	Red Mastic	All Ductwork	NF	5% C	3	1,750 LF*	CAT. I
MSV-01	Blue/Gray Sheet Vinyl and Tan Mastic	South End of Scope	NF	ND	3	NIS	NA
PL-01	White over Tan Plaster	Walls Throughout	NF	ND	3	NIS	NA
VB-01	6” Blue Cove Base with Tan Mastic	North Suites	NF	ND	3	NIS	NA
VB-02	4” Tan Cove Base with Tan Mastic	Corridors	NF	ND	3	NIS	NA
VB-03	4” Blue/Gray Cove Base with Tan Mastic	South Suites	NF	ND	3	NIS	NA

*Linear feet of ductwork

*Linear feet of ductwork

ASBESTOS CONTENT Expressed as percent	* = The facility owner has the option of point-counting by polarized light microscopy (PLM) those RACM whose asbestos content is less than 10% in order to more accurately determine the asbestos content therein.			
	PC = Results based on Point-Count analysis			
FRIABILITY	F = Friable Material	NF = Non-Friable Material		
ACM CATEGORY	RACM = Regulated ACM	CAT I = Category I non-friable ACM	CAT II = Category II non-friable ACM	
ABBREVIATIONS:	NA = Not Applicable	ND = None Detected	NIS = Not in Scope	A = Amosite
	HA = Homogeneous Area	SF = Square Feet	LF = Linear Feet	CF = Cubic Feet

3.0 CONCLUSIONS AND RECOMMENDATIONS

3.1 GENERAL

Asbestos-containing materials (ACMs) were identified in the scope of this survey. General and specific conclusions and recommendations are provided below.

The EPA, OSHA and the State of Florida have promulgated regulations dealing with asbestos. For commercial building owners, the EPA NESHAP (40 CFR 61) regulations require removal of RACM, prior to conducting activities which might disturb the material. They also deal with notification, handling and disposal of asbestos.

No homogenous areas of suspect RACM were determined to contain less than 10% asbestos by PLM analysis.

The EPA recommends that an Operations and Maintenance (O&M) Program be developed for any facilities with ACM, and this Program should address all ACM (known and/or assumed) present. The O&M Program establishes notification and training requirements along with special procedures for working around the ACM. The O&M Program would remain in effect until all asbestos is removed.

Category I and Category II non-friable materials, as defined by the EPA, may remain within a facility during demolition with no potential cessation of work, provided they remain non-friable and the appropriate engineering controls (i.e., wet methods) are utilized, with the resulting waste disposed of as asbestos-containing waste. However, there is no guarantee that these materials will remain non-friable. If the materials become friable, then they are classified as RACM.

RACM, as defined by the EPA, must be removed prior to renovation or demolition activities that may disturb the materials.

The OSHA regulations deal with employee exposure to airborne asbestos fibers. The regulations restrict employee exposure, and require special monitoring, training and handling procedures when dealing with asbestos. Additionally, OSHA has regulations that may supersede the EPA regulations. In order to protect the worker, OSHA has established a permissible exposure limit (PEL), which limits employee exposure to airborne fiber concentrations. OSHA requires objective evidence that the PEL will not be exceeded, as justification that personal air monitoring and engineering controls will not be required. OSHA has also established rules requiring the containerization and labeling of asbestos waste.

The State regulations require that anyone involved in asbestos consulting activities be a licensed asbestos consultant and that anyone involved in asbestos abatement, with the exception of roofing materials, be a licensed asbestos abatement contractor.

3.2 SPECIFIC

Black Mastic on Piping Red Mastic on HVAC Ductwork

These materials are defined by the EPA as a Category I non-friable materials. These materials do not appear to present a significant issue, as observed, at the time of the survey. We recommend that the identified ACM be maintained as part of an O&M Program and periodically monitored for any changes in condition. Additionally, we recommend that a licensed asbestos abatement contractor properly remove and dispose of the ACM prior to conducting renovation activities that might disturb the ACM.

Assumed Materials

Suspect vibration dampers, black vapor barrier and fire doors observed within the facility appeared to be in generally good condition and do not present a significant issue, as observed, at the time of the survey. We recommend that these materials be maintained as part of an O&M Program and periodically monitored for any changes in condition. Additionally, should planned renovation and/or demolition activities involve the disturbance of these materials, we recommend that they be sampled and analyzed for asbestos content, and if determined to be ACM, be properly removed and disposed by a licensed asbestos abatement contractor prior to conducting such activities.

Drywall System

The drywall system sample constituents were reported as “no asbestos detected” for the drywall and greater than one percent (>1%) asbestos for the joint compound. Composite sample analyses (combining the drywall and joint compound constituents) were reported as less than or equal to 1% asbestos. These drywall system samples are classified by the EPA as non-asbestos containing materials, when the samples are represented as a system composite with asbestos content of less than or equal to 1% asbestos. However, OSHA regulations offer differing opinions regarding the status of drywall joint compound when subjected to disturbance. Therefore, GLE recommends that the material be considered for removal by a licensed asbestos abatement contractor prior to disturbance (i.e. removal, sanding, cutting, etc.) as part of a renovation project. However, if maintained wet, the material may remain in-place during renovation and/or demolition activities provided sufficient documentation is obtained indicating personnel performing work are not exposed to asbestos fiber levels above OSHA's PEL of 0.1 fibers per cubic centimeter (f/cc). This documentation may be obtained by performing air monitoring as required by OSHA.

4.0 LIMITATIONS AND CONDITIONS

As a result of previous renovations, there may be hidden materials, such as floor tile, sheet vinyl flooring, insulation, etc. These materials may be found in various areas hidden under existing flooring materials or in wall cavities. Any materials found during construction activities, either not addressed in this survey report, or similar to the ACM identified in this survey report should be assumed to be ACM until sampling and analysis documents otherwise.

Because of the hidden nature of many building components (i.e. within mechanical chases), it may be impossible to determine if all of the suspect building materials have been located and subsequently tested. Destructive testing in some instances is not a viable option. We cannot, therefore, guarantee that all potential ACM has been located. For the same reasons, estimates of quantities and/or conditions are subject to readily apparent situations, and our findings reflect this condition. We do warrant, however, that the investigations and methodology reflect our best efforts based upon the prevailing standard of care in the environmental industry.

The Florida Department of Environmental Protection (FDEP) has issued an interpretation regarding the testing of concrete flooring, walls and roofing materials, which states that “if concrete will be recycled or reused, the concrete must be sampled and analyzed for the presence of asbestos prior to the commencement of activities that may release asbestos fibers into the environment”, and that “all of the different layers or types of concrete in a sample must be analyzed, individually, using the method specified in Appendix E, subpart E, 40 CFR Part 763, Section 1, Polarized Light Microscopy, with point-counting”, as applicable. Under the presumption that the Client will not be reusing/recycling the concrete, this additional sampling and analysis of concrete is not included with our scope of work. However, if requested by the Client, GLE will perform this work as an additional service.

The information contained in this report was prepared based upon specific parameters and regulations in force at the time of this report. The information herein is only for the specific use of the client and GLE. GLE accepts no responsibility for the use, interpretation, or reliance by other parties on the information contained herein, unless prior written authorization has been obtained from GLE.

APPENDIX A
Analytical Results and Chain of Custody

SUMMARY OF BULK SAMPLE ANALYSIS

AKEA; 3A Gastroenterology and Pulmonary

16950-00371

Sample	Sample Type	Fiber Type	
CT-01A	2x2 White Ceiling Tile	70%	Mineral Wool
		30%	Perlite, Quartz, Calcite
CT-01B	2x2 White Ceiling Tile	70%	Mineral Wool
		30%	Perlite, Quartz, Calcite
CT-01C-QC	2x2 White Ceiling Tile	70%	Mineral Wool
		30%	Perlite, Quartz, Calcite
CT-02A	2x4 White Ceiling Tile	70%	Mineral Wool
		30%	Perlite, Quartz, Calcite
CT-02B	2x4 White Ceiling Tile	70%	Mineral Wool
		30%	Perlite, Quartz, Calcite
CT-02C	2x4 White Ceiling Tile	70%	Mineral Wool
		30%	Perlite, Quartz, Calcite
DW-01A	Drywall	100%	Gypsum, Quartz, Calcite, Clay
	Joint Compound	5%	Chrysotile Asbestos
		95%	Quartz, Calcite, Clay, Mica
	Composite Total	<1%	Chrysotile Asbestos
		100%	Gypsum, Quartz, Calcite, Clay

Overall asbestos concentration is <1% by composite sample analysis and is not considered an asbestos containing material by EPA definition.

Analyst / Approved
Signatory:



Darryl Neldner

* Polarized Light Microscopy coupled with dispersion is the technique used for identification in accordance with EPA 600/M4-82-020, EPA 600/R-93/116, and NIOSH Method 9002.

** The percentage of each component is visually estimated. The result of this analysis relate only to the material tested. The report shall not be used to claim product endorsement by NVLAP or any agency of the U.S. Government. (>1% greater than one percent, <1% less than one percent) QC - Sample reanalyzed for QA/QC.

*** This report shall not be reproduced except in full, without the written approval of the laboratory. GLE Report # 19624

Analysis performed by GLE Associates, Inc. NVLAP Code 102003-0, CO AL-17485, TX 30-0337

Feedback regarding laboratory performance should be addressed to lab@gleassociates.com.

Report Date: 3/22/2016

Page 1 of 8


SUMMARY OF BULK SAMPLE ANALYSIS

AKEA; 3A Gastroenterology and Pulmonary

16950-00371

Sample	Sample Type		Fiber Type
DW-01B	Drywall	100%	Gypsum, Quartz, Calcite, Clay
	Joint Compound	5%	Chrysotile Asbestos
		95%	Quartz, Calcite, Clay, Mica
	Composite Total	<1%	Chrysotile Asbestos
		100%	Gypsum, Quartz, Calcite, Clay
Overall asbestos concentration is <1% by composite sample analysis and is not considered an asbestos containing material by EPA definition.			
DW-01C	Drywall	100%	Gypsum, Quartz, Calcite, Clay
	Joint Compound	5%	Chrysotile Asbestos
		95%	Quartz, Calcite, Clay, Mica
	Composite Total	<1%	Chrysotile Asbestos
		100%	Gypsum, Quartz, Calcite, Clay
Overall asbestos concentration is <1% by composite sample analysis and is not considered an asbestos containing material by EPA definition.			
DW-02A	Drywall and Joint Compound	100%	Gypsum, Quartz, Calcite, Clay
DW-02B	Drywall and Joint Compound	100%	Gypsum, Quartz, Calcite, Clay
DW-02C	Drywall and Joint Compound	100%	Gypsum, Quartz, Calcite, Clay
FT-01A-QC	12x12 White Floor Tile & Tan Mastic	100%	Polymer, Quartz, Calcite, Clay, Mica
FT-01B	12x12 White Floor Tile & Tan Mastic	100%	Polymer, Quartz, Calcite, Clay, Mica
FT-01C	12x12 White Floor Tile & Tan Mastic	100%	Polymer, Quartz, Calcite, Clay, Mica

Analyst / Approved
Signatory:



Darryl Neldner

* Polarized Light Microscopy coupled with dispersion is the technique used for identification in accordance with EPA 600/M4-82-020, EPA 600/R-93/116, and NIOSH Method 9002.

** The percentage of each component is visually estimated. The result of this analysis relate only to the material tested. The report shall not be used to claim product endorsement by NVLAP or any agency of the U.S. Government. (>1% greater than one percent, <1% less than one percent) QC - Sample reanalyzed for QA/QC.

*** This report shall not be reproduced except in full, without the written approval of the laboratory. GLE Report # 19624

Analysis performed by GLE Associates, Inc. NVLAP Code 102003-0, CO AL-17485, TX 30-0337

Feedback regarding laboratory performance should be addressed to lab@gleassociates.com.

Report Date: 3/22/2016

Page 2 of 8

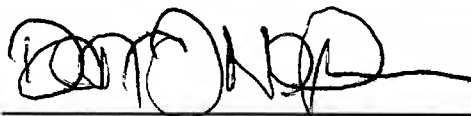
SUMMARY OF BULK SAMPLE ANALYSIS

AKEA; 3A Gastroenterology and Pulmonary

16950-00371

Sample	Sample Type		Fiber Type
FT-02A	12x12 Tan Floor Tile & Tan Mastic	100%	Polymer, Quartz, Calcite, Clay, Mica
FT-02B	12x12 Tan Floor Tile & Tan Mastic	100%	Polymer, Quartz, Calcite, Clay, Mica
FT-02C	12x12 Tan Floor Tile & Tan Mastic	100%	Polymer, Quartz, Calcite, Clay, Mica
FT-03A	12x12 Orange/Brown Floor Tile & Tan Mastic	100%	Polymer, Quartz, Calcite, Clay, Mica
FT-03B	12x12 Orange/Brown Floor Tile & Tan Mastic	100%	Polymer, Quartz, Calcite, Clay, Mica
FT-03C	12x12 Orange/Brown Floor Tile & Tan Mastic	100%	Polymer, Quartz, Calcite, Clay, Mica
FT-04A	12x12 Green Floor Tile & Tan Mastic	100%	Polymer, Quartz, Calcite, Clay, Mica
FT-04B-QC	12x12 Green Floor Tile & Tan Mastic	100%	Polymer, Quartz, Calcite, Clay, Mica
FT-04C	12x12 Green Floor Tile & Tan Mastic	100%	Polymer, Quartz, Calcite, Clay, Mica
M-01A	Gray Caulk	100%	Polymer, Quartz, Calcite, Clay, Mica
M-01B	Gray Caulk	100%	Polymer, Quartz, Calcite, Clay, Mica
M-01C	Gray Caulk	100%	Polymer, Quartz, Calcite, Clay, Mica
M-02A	Ceramic Tile Grout	100%	Quartz, Calcite, Clay, Mica

Analyst / Approved
Signatory:



Darryl Neldner

* Polarized Light Microscopy coupled with dispersion is the technique used for identification in accordance with EPA 600/M4-82-020, EPA 600/R-93/116, and NIOSH Method 9002.

** The percentage of each component is visually estimated. The result of this analysis relate only to the material tested. The report shall not be used to claim product endorsement by NVLAP or any agency of the U.S. Government. (>1% greater than one percent, <1% less than one percent) QC - Sample reanalyzed for QA/QC.

*** This report shall not be reproduced except in full, without the written approval of the laboratory. GLE Report # 19624

Analysis performed by GLE Associates, Inc. NVLAP Code 102003-0, CO AL-17485, TX 30-0337

Feedback regarding laboratory performance should be addressed to lab@gleassociates.com.

Report Date: 3/22/2016

Page 3 of 8

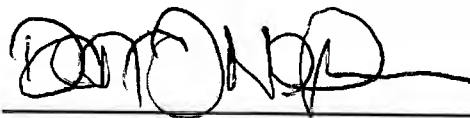
SUMMARY OF BULK SAMPLE ANALYSIS

AKEA; 3A Gastroenterology and Pulmonary

16950-00371

Sample	Sample Type	Fiber Type	
M-02B	Ceramic Tile Grout	100%	Quartz, Calcite, Clay, Mica
M-02C	Ceramic Tile Grout	100%	Quartz, Calcite, Clay, Mica
M-03A	Locker Panels	100%	Quartz, Calcite, Clay, Mica
M-03B	Locker Panels	100%	Quartz, Calcite, Clay, Mica
M-03C-QC	Locker Panels	100%	Quartz, Calcite, Clay, Mica
M-04A	Red Fire Cwalk	100%	Polymer, Quartz, Calcite, Clay, Mica
M-04B	Red Fire Cwalk	100%	Polymer, Quartz, Calcite, Clay, Mica
M-04C	Red Fire Cwalk	100%	Polymer, Quartz, Calcite, Clay, Mica
M-05A	Black Gasket	100%	Polymer
M-05B	Black Gasket	100%	Polymer
M-05C	Black Gasket	100%	Polymer
M-06A	Brown Firestop	100%	Polymer, Quartz, Calcite, Clay, Mica
M-06B	Brown Firestop	100%	Polymer, Quartz, Calcite, Clay, Mica
M-06C	Brown Firestop	100%	Polymer, Quartz, Calcite, Clay, Mica
M-07A-QC	Pink Firestop	100%	Polymer, Quartz, Calcite, Clay, Mica
M-07B	Pink Firestop	100%	Polymer, Quartz, Calcite, Clay, Mica

Analyst / Approved
Signatory:



Darryl Neldner

* Polarized Light Microscopy coupled with dispersion is the technique used for identification in accordance with EPA 600/M4-82-020, EPA 600/R-93/116, and NIOSH Method 9002.

** The percentage of each component is visually estimated. The result of this analysis relate only to the material tested. The report shall not be used to claim product endorsement by NVLAP or any agency of the U.S. Government. (>1% greater than one percent, <1% less than one percent) QC - Sample reanalyzed for QA/QC.

*** This report shall not be reproduced except in full, without the written approval of the laboratory. GLE Report # 19624

Analysis performed by GLE Associates, Inc. NVLAP Code 102003-0, CO AL-17485, TX 30-0337

Feedback regarding laboratory performance should be addressed to lab@gleassociates.com.

Report Date: 3/22/2016

SUMMARY OF BULK SAMPLE ANALYSIS

AKEA; 3A Gastroenterology and Pulmonary

16950-00371

Sample	Sample Type	Fiber Type	
M-07C	Pink Firestop	100%	Polymer, Quartz, Calcite, Clay, Mica
M-08A	Gray Sink Insulation	100%	Polymer, Quartz, Calcite, Clay, Mica
M-08B	Gray Sink Insulation	100%	Polymer, Quartz, Calcite, Clay, Mica
M-08C	Gray Sink Insulation	100%	Polymer, Quartz, Calcite, Clay, Mica
MAS-01A	Black Mastic	10% 90%	Chrysotile Asbestos Bitumen
MAS-01B	Black Mastic		Positive Stop/Sample not analyzed
MAS-01C	Black Mastic		Positive Stop/Sample not analyzed
MAS-02A	Tan Mastic	100%	Polymer
MAS-02B-QC	Tan Mastic	100%	Polymer
MAS-02C	Tan Mastic	100%	Polymer
MAS-03A	Black Mastic	100%	Bitumen
MAS-03B	Black Mastic	100%	Bitumen
MAS-03C	Black Mastic	100%	Bitumen
MAS-04A	Tan Mastic	100%	Polymer
MAS-04B	Tan Mastic	100%	Polymer
MAS-04C	Tan Mastic	100%	Polymer

Analyst / Approved
Signatory:



Darryl Neldner

* Polarized Light Microscopy coupled with dispersion is the technique used for identification in accordance with EPA 600/M4-82-020, EPA 600/R-93/116, and NIOSH Method 9002.

** The percentage of each component is visually estimated. The result of this analysis relate only to the material tested. The report shall not be used to claim product endorsement by NVLAP or any agency of the U.S. Government. (>1% greater than one percent, <1% less than one percent) QC - Sample reanalyzed for QA/QC.

*** This report shall not be reproduced except in full, without the written approval of the laboratory. GLE Report # 19624

Analysis performed by GLE Associates, Inc. NVLAP Code 102003-0, CO AL-17485, TX 30-0337

Feedback regarding laboratory performance should be addressed to lab@gleassociates.com.

Report Date: 3/22/2016

Page 5 of 8

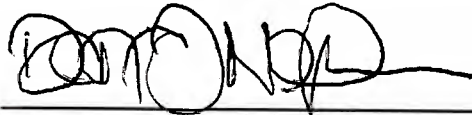
SUMMARY OF BULK SAMPLE ANALYSIS

AKEA; 3A Gastroenterology and Pulmonary

16950-00371

Sample	Sample Type	Fiber Type	
MAS-05A	Black Mastic	10%	Chrysotile Asbestos
		90%	Bitumen
	Yellow Insulation	100%	Mineral Wool
MAS-05B	Black Mastic		Positive Stop/Sample not analyzed
	Yellow Insulation	100%	Mineral Wool
MAS-05C-QC	Black Mastic		Positive Stop/Sample not analyzed
	Yellow Insulation	100%	Mineral Wool
MAS-06A	Tan Mastic	100%	Polymer
MAS-06B	Tan Mastic	100%	Polymer
MAS-06C	Tan Mastic	100%	Polymer
MAS-07A	White Mastic	100%	Polymer, Quartz, Calcite, Clay, Mica
MAS-07B	White Mastic	100%	Polymer, Quartz, Calcite, Clay, Mica
MAS-07C	White Mastic	100%	Polymer, Quartz, Calcite, Clay, Mica
MAS-08A	Gray Mastic	100%	Polymer, Quartz, Calcite, Clay, Mica
MAS-08B	Gray Mastic	100%	Polymer, Quartz, Calcite, Clay, Mica
MAS-08C	Gray Mastic	100%	Polymer, Quartz, Calcite, Clay, Mica
MAS-09A-QC	Tan Mastic	100%	Polymer

Analyst / Approved
Signatory:



Darryl Neldner

* Polarized Light Microscopy coupled with dispersion is the technique used for identification in accordance with EPA 600/M4-82-020, EPA 600/R-93/116, and NIOSH Method 9002.

** The percentage of each component is visually estimated. The result of this analysis relate only to the material tested. The report shall not be used to claim product endorsement by NVLAP or any agency of the U.S. Government. (>1% greater than one percent, <1% less than one percent) QC - Sample reanalyzed for QA/QC.

*** This report shall not be reproduced except in full, without the written approval of the laboratory. GLE Report # 19624

Analysis performed by GLE Associates, Inc. NVLAP Code 102003-0, CO AL-17485, TX 30-0337

Feedback regarding laboratory performance should be addressed to lab@gleassociates.com.

Report Date: 3/22/2016

Page 6 of 8

SUMMARY OF BULK SAMPLE ANALYSIS

AKEA; 3A Gastroenterology and Pulmonary

16950-00371

Sample	Sample Type	Fiber Type	
MAS-09B	Tan Mastic	100%	Polymer
MAS-09C	Tan Mastic	100%	Polymer
MAS-10A	Red Mastic	5% 95%	Chrysotile Asbestos Polymer
MAS-10B	Red Mastic	Positive Stop/Sample not analyzed	
MAS-10C	Red Mastic	Positive Stop/Sample not analyzed	
MSV-01A	Blue/Gray Sheet Vinyl and Tan Mastic	20% 80%	Cellulose/paper Polymer
MSV-01B	Blue/Gray Sheet Vinyl and Tan Mastic	20% 80%	Cellulose/paper Polymer
MSV-01C	Blue/Gray Sheet Vinyl and Tan Mastic	20% 80%	Cellulose/paper Polymer
PL-01A	White over Tan Plaster	100%	Quartz, Calcite, Clay, Mica
PL-01B-QC	White over Tan Plaster	100%	Quartz, Calcite, Clay, Mica
PL-01C	White over Tan Plaster	100%	Quartz, Calcite, Clay, Mica
VB-01A	6" Blue Cove Base & Tan Mastic	100%	Polymer
VB-01B	6" Blue Cove Base & Tan Mastic	100%	Polymer

Analyst / Approved
Signatory:



Darryl Neldner

* Polarized Light Microscopy coupled with dispersion is the technique used for identification in accordance with EPA 600/M4-82-020, EPA 600/R-93/116, and NIOSH Method 9002.

** The percentage of each component is visually estimated. The result of this analysis relate only to the material tested. The report shall not be used to claim product endorsement by NVLAP or any agency of the U.S. Government. (>1% greater than one percent, <1% less than one percent) QC - Sample reanalyzed for QA/QC.

*** This report shall not be reproduced except in full, without the written approval of the laboratory. GLE Report # 19624

Analysis performed by GLE Associates, Inc. NVLAP Code 102003-0, CO AL-17485, TX 30-0337

Feedback regarding laboratory performance should be addressed to lab@gleassociates.com.

Report Date: 3/22/2016

Page 7 of 8

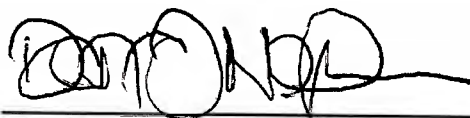
SUMMARY OF BULK SAMPLE ANALYSIS

AKEA; 3A Gastroenterology and Pulmonary

16950-00371

Sample	Sample Type	Fiber Type	
VB-01C	6" Blue Cove Base & Tan Mastic	100%	Polymer
VB-02A	4" Tan Cove Base & Tan Mastic	100%	Polymer
VB-02B	4" Tan Cove Base & Tan Mastic	100%	Polymer
VB-02C	4" Tan Cove Base & Tan Mastic	100%	Polymer
VB-03A	6" Blue Cove Base & Tan Mastic	100%	Polymer
VB-03B	6" Blue Cove Base & Tan Mastic	100%	Polymer
VB-03C-QC	6" Blue Cove Base & Tan Mastic	100%	Polymer

Analyst / Approved
Signatory:



Darryl Neldner

* Polarized Light Microscopy coupled with dispersion is the technique used for identification in accordance with EPA 600/M4-82-020, EPA 600/R-93/116, and NIOSH Method 9002.

** The percentage of each component is visually estimated. The result of this analysis relate only to the material tested. The report shall not be used to claim product endorsement by NVLAP or any agency of the U.S. Government. (>1% greater than one percent, <1% less than one percent) QC - Sample reanalyzed for QA/QC.

*** This report shall not be reproduced except in full, without the written approval of the laboratory. GLE Report # 19624

Analysis performed by GLE Associates, Inc. NVLAP Code 102003-0, CO AL-17485, TX 30-0337

Feedback regarding laboratory performance should be addressed to lab@gleassociates.com.

Report Date: 3/22/2016

CHAIN OF CUSTODY/SAMPLE TRANSMITTAL FORM



GLE Associates, Inc.
2228 NW 40th Terrace, Suite C
Gainesville, FL 32605
PHONE: (352) 335-6648 FAX: (352) 335-6187

CLIENT: AKEA

PROJECT #: 16950-00371

PROJECT: 3A Gastroenterology and Pulmonary

LABORATORY SENT TO: GLE Tampa

DATE: 03/17/16

190221
LAB

SAMPLE INFORMATION

SAMPLE #	DESCRIPTION/ LOCATION	SAMPLE #	DESCRIPTION/ LOCATION
CT-01A-C	2' x 2' White Ceiling Tile	M-07A-C	Pink Firestop
CT-02A-C	2' x 4' White Ceiling Tile	M-08A-C	Gray Sink Insulation
DW-01A-C	Drywall with Joint Compound	MAS-01A-C	Black Mastic
DW-02A-C	Drywall with Joint Compound	MAS-02A-C	Tan Mastic
FT-01A-C	12" x 12" White Floor Tile with Tan Mastic	MAS-03A-C	Black Mastic
FT-02A-C	12" x 12" Tan Floor Tile with Tan Mastic	MAS-04A-C	Tan Mastic
FT-03A-C	12" x 12" Orange/Brown Floor Tile with Tan Mastic	MAS-05A-C	Black Mastic
FT-04A-C	12" x 12" Green Floor Tile with Tan Mastic	MAS-06A-C	Tan Mastic
M-01A-C	Gray Caulk	MAS-07A-C	White Mastic
M-02A-C	Ceramic Tile Grout	MAS-08A-C	Gray Mastic
M-03A-C	Locker Panels	MAS-09A-C	Tan Mastic
M-04A-C	Red Fire Caulk	MAS-10A-C	Red Mastic
M-05A-C	Black Gasket	MSV-01A-C	Blue/Gray Sheet Vinyl and Tan Mastic
M-06A-C	Brown Firestop	PL-01A-C	White over Tan Plaster

IMPORTANT TOTAL NUMBER OF SAMPLES SUBMITTED:

93

IMPORTANT POSITIVE STOP ANALYSIS:

Yes

IMPORTANT CODE TYPE:

PLM4

IMPORTANT E-MAIL RESULTS TO:

P. Zak, M. Miller, M. Harrell

SAMPLE DUE DATE/TIME:

03/ 24/ 16

AM / PM

PACKAGED BY: Michael D. Harrell

SAMPLES RECEIVED BY:

DATE PACKAGED: 03/17/16

DATE:

METHOD OF TRANSMITTAL: FedEx

TIME:

TRANSMITTED BY: *Michael D. Harrell*

Comments:

PAGE: 1 OF 2

IN
3/18/16
AK

CLIENT: AKEA



GLE Associates, Inc.
2228 NW 40th Terrace, Suite C
Gainesville, FL 32605
PHONE: (352) 335-6648 FAX: (352) 335-6187

PROJECT #: 16950-00371

PROJECT: 3A Gastroenterology and Pulmonary

LABORATORY SENT TO: GLE Tampa

DATE: 03/17/16

SAMPLE INFORMATION

SAMPLE #	DESCRIPTION/ LOCATION	SAMPLE #	DESCRIPTION/ LOCATION
VB-01A-C	6" Blue Cove Base with Tan Mastic		
VB-02A-C	4" Tan Cove Base with Tan Mastic		
VB-01A-C	6" Blue Cove Base with Tan Mastic		
<u>IMPORTANT</u> TOTAL NUMBER OF SAMPLES SUBMITTED:		93	
<u>IMPORTANT</u> POSITIVE STOP ANALYSIS:		Yes	
<u>IMPORTANT</u> CODE TYPE:		PLM4	
<u>IMPORTANT</u> E-MAIL RESULTS TO:		P. Zak, M. Miller, M. Harrell	

SAMPLE DUE DATE/TIME:	03/	25/	16	AM / PM
------------------------------	------------	------------	-----------	----------------

PACKAGED BY: Michael D. Harrell	SAMPLES RECEIVED BY:
DATE PACKAGED: 03/17/16	DATE:
METHOD OF TRANSMITTAL: FedEx	TIME:
TRANSMITTED BY: <i>Michael D. Harrell</i>	Comments:

PAGE: 2 OF 2

APPENDIX B
Personnel and Laboratory Certifications



**STATE OF FLORIDA
DEPARTMENT OF BUSINESS AND PROFESSIONAL REGULATION**

**ASBESTOS LICENSING UNIT
1940 NORTH MONROE STREET
TALLAHASSEE FL 32399-0783**

(850) 487-1395

**GLE ASSOCIATES INC
5405 CYPRESS CENTER DRIVE
SUITE 110
TAMPA FL 33609**

Congratulations! With this license you become one of the nearly one million Floridians licensed by the Department of Business and Professional Regulation. Our professionals and businesses range from architects to yacht brokers, from boxers to barbeque restaurants, and they keep Florida's economy strong.

Every day we work to improve the way we do business in order to serve you better. For information about our services, please log onto www.myfloridalicense.com. There you can find more information about our divisions and the regulations that impact you, subscribe to department newsletters and learn more about the Department's initiatives.

Our mission at the Department is: License Efficiently, Regulate Fairly. We constantly strive to serve you better so that you can serve your customers. Thank you for doing business in Florida, and congratulations on your new license!



DETACH HERE

RICK SCOTT, GOVERNOR

KEN LAWSON, SECRETARY

**STATE OF FLORIDA
DEPARTMENT OF BUSINESS AND PROFESSIONAL REGULATION
ASBESTOS LICENSING UNIT**

LICENSE NUMBER	
ZA0000034	

The ASBESTOS BUSINESS ORGANIZATION
Named below IS LICENSED
Under the provisions of Chapter 469 FS.
Expiration date: NOV 30, 2017

**GLE ASSOCIATES INC
5405 CYPRESS CENTER DRIVE
SUITE 110
TAMPA FL 33609**



ISSUED: 12/01/2015

DISPLAY AS REQUIRED BY LAW

SEQ # L1512010002475



**STATE OF FLORIDA
DEPARTMENT OF BUSINESS AND PROFESSIONAL REGULATION**

**ASBESTOS LICENSING UNIT
1940 NORTH MONROE STREET
TALLAHASSEE FL 32399-0783**

(850) 487-1395

**GREENE, ROBERT BLAIR
GLE ASSOCIATES INC
4300 W CYPRESS STREET SUITE 400
TAMPA FL 33607**

Congratulations! With this license you become one of the nearly one million Floridians licensed by the Department of Business and Professional Regulation. Our professionals and businesses range from architects to yacht brokers, from boxers to barbeque restaurants, and they keep Florida's economy strong.

Every day we work to improve the way we do business in order to serve you better. For information about our services, please log onto **www.myfloridalicense.com**. There you can find more information about our divisions and the regulations that impact you, subscribe to department newsletters and learn more about the Department's initiatives.

Our mission at the Department is: License Efficiently, Regulate Fairly. We constantly strive to serve you better so that you can serve your customers. Thank you for doing business in Florida, and congratulations on your new license!



**STATE OF FLORIDA
DEPARTMENT OF BUSINESS AND
PROFESSIONAL REGULATION**

EA0000009

ISSUED: 11/30/2014

**ASBESTOS CONSULTANT - ENGINEER
GREENE, ROBERT BLAIR
GLE ASSOCIATES INC**

**IS LICENSED under the provisions of Ch. 469 FS.
Expiration date : NOV 30, 2016 L1411300002420**

DETACH HERE

RICK SCOTT, GOVERNOR

KEN LAWSON, SECRETARY

**STATE OF FLORIDA
DEPARTMENT OF BUSINESS AND PROFESSIONAL REGULATION
ASBESTOS LICENSING UNIT**

LICENSE NUMBER	
EA0000009	

**The ASBESTOS CONSULTANT - ENGINEER
Named below IS LICENSED
Under the provisions of Chapter 469 FS.
Expiration date: NOV 30, 2016**

**GREENE, ROBERT BLAIR
GLE ASSOCIATES INC
4300 W. CYPRESS STREET
SUITE 400
TAMPA FL 33607**



ISSUED: 11/30/2014

DISPLAY AS REQUIRED BY LAW

SEQ # L1411300002420



M·E·T·A

Mayhew Environmental Training Associates

I N C O R P O R A T E D

Certificate # MEA87487170AB347B

Michael Harrell

completed the requirements for asbestos accreditation under Section 206 of TSCA Title II, 15 USC 2646

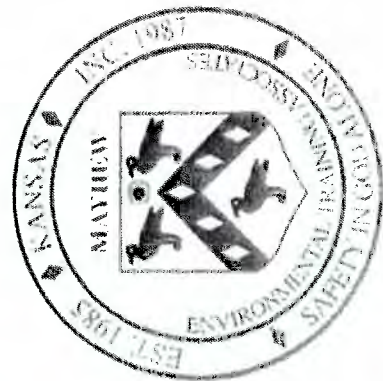
has on 8/13/2015, in Tampa, FL

4-hr. Asbestos Building Inspector Refresher

as approved by FL

and the US EPA under 40 CFR 763 (AHERA)

from 8/13/2015 to 8/13/2015 and passed the associated exam on 8/13/2015
with a score of at least 70%



Training Provider #: FL49-0001221

Course #: 150813ASBIRFL513

SSN: XXX-XX-6236

Expiration: 8/13/2016

P.O. Box 4693 - Lawrence, KS. 66047 - 800.444.6382

www.metaenvironmental.net

Bill Young

Instructor

Thomas Mayhew

President



GLE Associates, Inc. FL 49-0001218

5405 Cypress Center Drive ~ Suite 110 ~ Tampa, Florida 33609 ~ (813) 241-8350

certifies that

Matthew Miller

has completed the requisite training for
ASBESTOS INSPECTOR REFRESHER
accreditation under TSCA Title II Course No.: FL 49-0002824

conducted on

September 26, 2015

at

TAMPA, FLORIDA

Certificate Number

6205

Passed Exam with score of 70% or better.

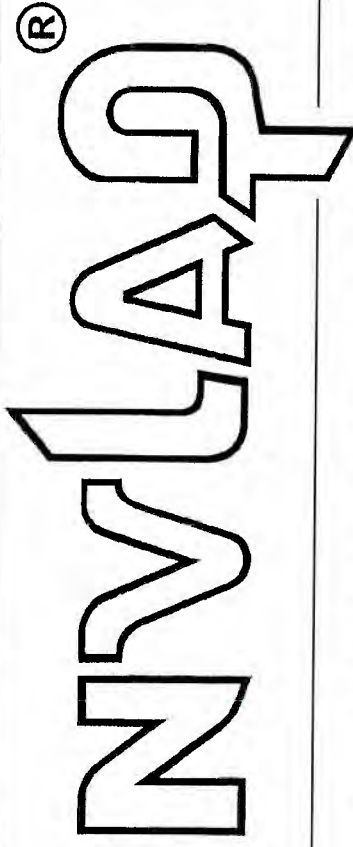
EPA Accreditation Expires: **September 26, 2016**

Instructor

GLE Associates, Inc.

Robert B. Greene

United States Department of Commerce
National Institute of Standards and Technology



Certificate of Accreditation to ISO/IEC 17025:2005

NVLAP LAB CODE: 102003-0

GLE Associates, Inc.

Tampa, FL

is accredited by the National Voluntary Laboratory Accreditation Program for specific services,
listed on the Scope of Accreditation, for:

BULK ASBESTOS FIBER ANALYSIS

*This laboratory is accredited in accordance with the recognized International Standard ISO/IEC 17025:2005.
This accreditation demonstrates technical competence for a defined scope and the operation of a laboratory quality
management system (refer to joint ISO-ILAC-IAF Communiqué dated January 2009).*

2015-04-01 through 2016-03-31

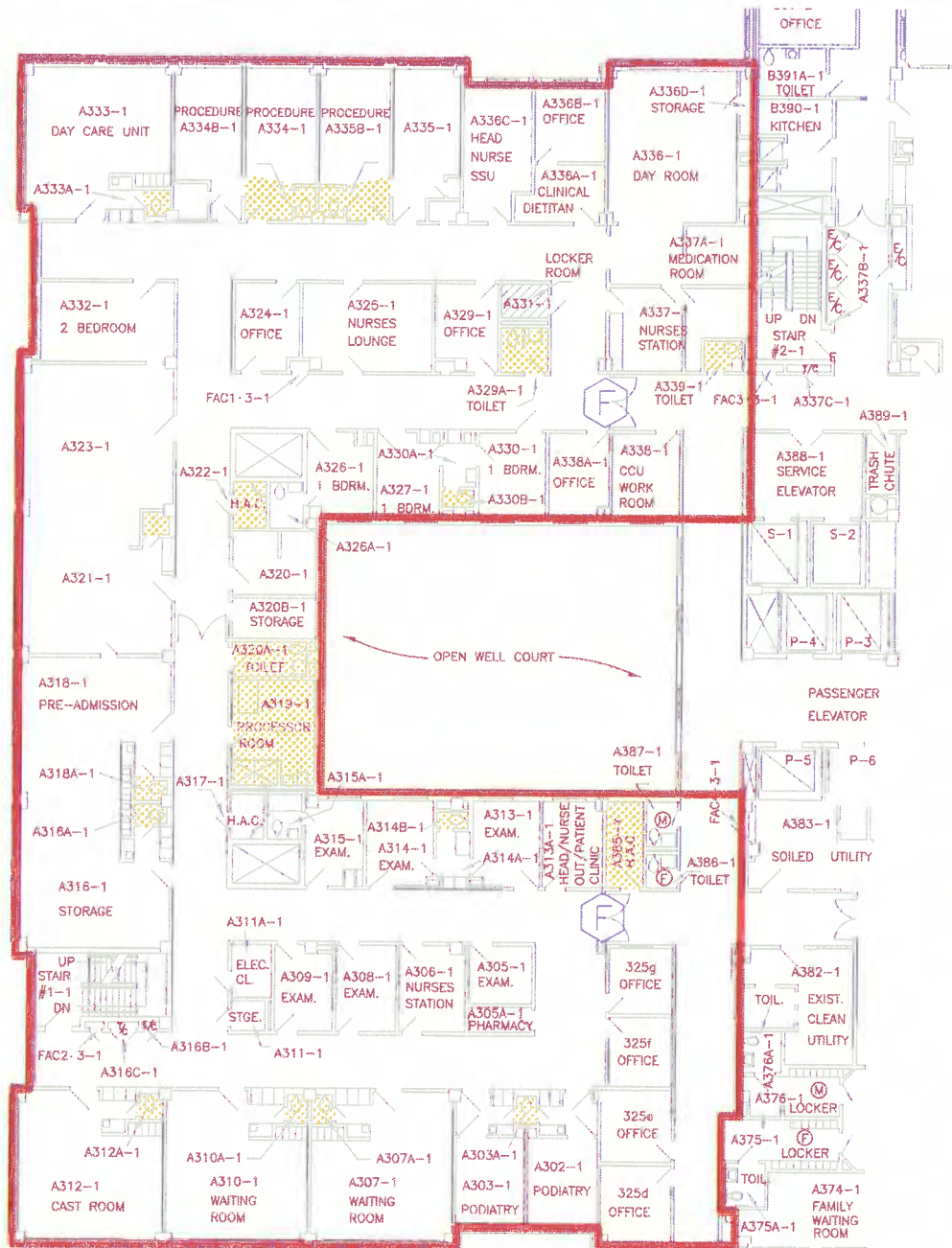
Effective dates



A handwritten signature in dark ink, appearing to read "W. D. M. L. Q.", is written over a horizontal line.

For the National Institute of Standards and Technology

APPENDIX C
Asbestos Location Plans



GENERAL LEGEND	
	SCOPE OF WORK
	ASBESTOS-CONTAINING JOINT COMPOUND ASSOCIATED WITH DRYWALL CEILINGS
	ASSUMED ASBESTOS-CONTAINING FIRE DOORS

ASBESTOS-CONTAINING BLACK MASTIC ON RADIANT HEATING ELBOWS THROUGHOUT.

ASBESTOS-CONTAINING BLACK MASTIC ON DOMESTIC HOT WATER PIPING THROUGHOUT.



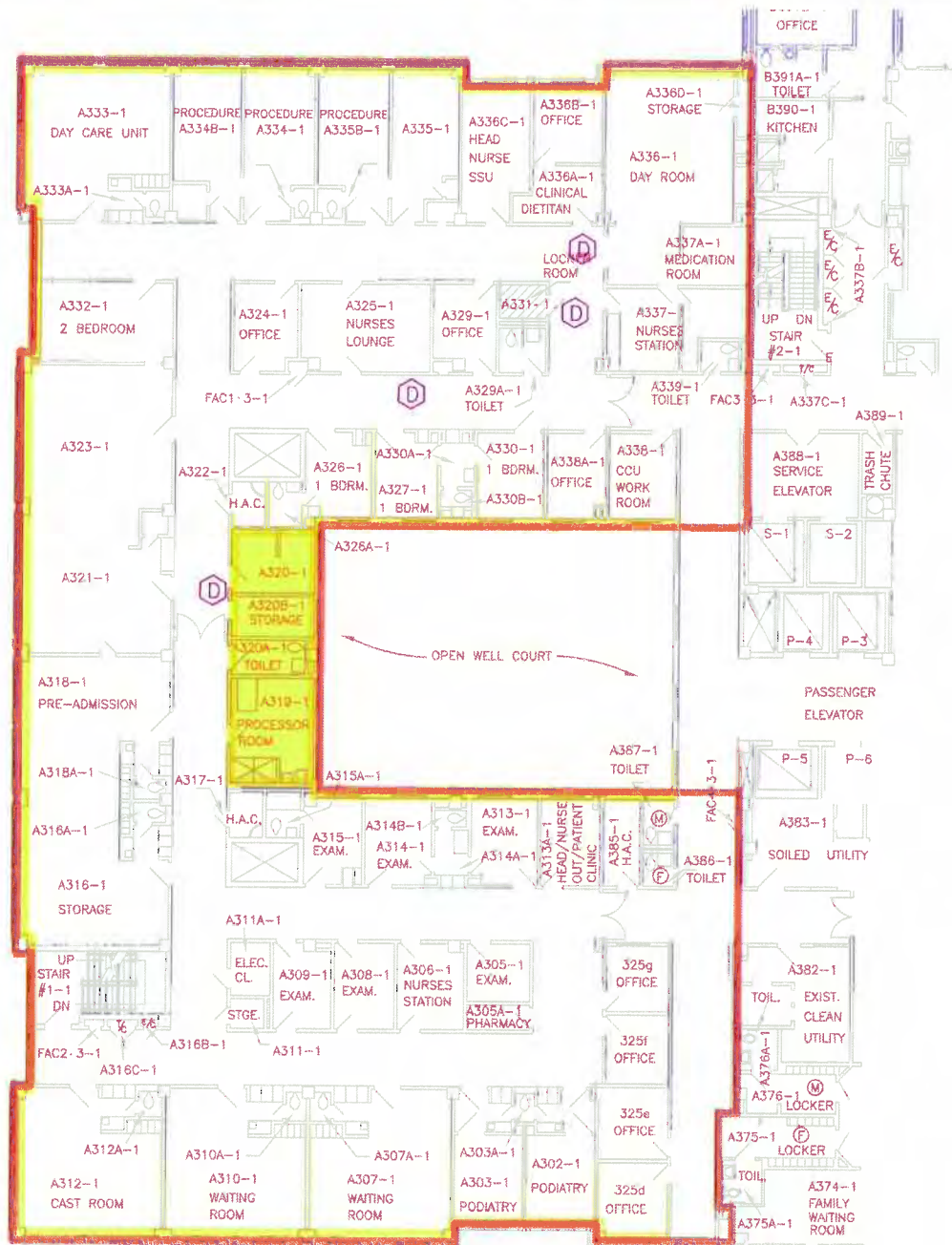
THIS DRAWING IS NOT TO SCALE.

ACM LOCATION PLAN
 RENOVATE 3A FOR GASTROENTEROLOGY AND
 PULMONARY
 MALCOM RANDALL VA MEDICAL CENTER
 ORLANDO VA MEDICAL CENTER
 GAINESVILLE, FLORIDA

Prepared for:
 MR. RANDY HENSLEY, PE
 AREA INC.
 25105 WEST NEWBERRY ROAD
 NEWBERRY, FLORIDA 32669

Prepared By:
 GLE ASSOCIATES, INC.
 6405 CYPRESS CENTER DRIVE STE 110
 TAMPA, FLORIDA 33609
 Phone: (813) 241-6350 Fax: (813) 241-6737

SEA-200-166
 C:\PROJ\16090\00171
 DATE: 03/28/16
 CAZ: 16090-00171
 SHEET: 01
 OF 2 SHEET(S)
AL-1



GENERAL LEGEND	
	SCOPE OF WORK
	ASSUMED ASBESTOS-CONTAINING BLACK VAPOR BARRIER
	ASSUMED ASBESTOS-CONTAINING VIBRATION DAMPERS

ASBESTOS-CONTAINING RED MASTIC ON METAL DUCTWORK THROUGHOUT.



THIS DRAWING IS NOT TO SCALE

ACM LOCATION PLAN
RENOVATE 3A FOR GASTROENTEROLOGY AND
PULMONARY
MALCOM RANDALL VA MEDICAL CENTER
ORLANDO VA MEDICAL CENTER
GAINESVILLE, FLORIDA

Prepared for:
MR. RANDY HENSLEY, PE
AKA INC.
25105 WEST NEWBERRY ROAD
NEWBERRY, FLORIDA 32669

Prepared By:
GLE ASSOCIATES, INC.
5405 CYPRESS CENTER DRIVE STE 110
TAMPA, FLORIDA 33609
Phone: (813) 241-8350 Fax: (813) 241-8737

GLE DNL NO.	
CAD	18825-00371
DATE	03/28/16
BY	AL-2
OF 2 SHEET(S)	

APPENDIX D

Photographs



Photo D-1

Upper Photo: CT-01-2' x 2' White Ceiling Tile
Lower Photo: CT-02-2' x 4' White Ceiling Tile

Photograph Date:
March 14 through 16, 2016

Prepared By: GLE Associates, Inc.
2228 NW 40th Terrace, Suite C
Gainesville, Florida 32605
(352) 335-6648 fax: (352) 335-6187



Renovate 3A Gastroenterology and
Pulmonary

Drawn LR	Job No. 16950-00371
Checked MB	Figure D-1
Date 3/24/16	



Photo D-2

Upper Photo: DW-01-Drywall with Joint Compound

Lower Photo: DW-02-Drywall with Joint Compound

Photograph Date:
March 14 through 16, 2016

Prepared By: GLE Associates, Inc.
2228 HWY 407 Terrace, Suite C
Culpeper, Florida 32603
(352) 335-6648 fax: (352) 335-6187



GLE

ARCHITECTS | ENGINEERS | ENVIRONMENTAL CONSULTANTS

Renovate SA Gastroenterology and Pulmonary

Drawn LR	Job No. 16950-00371
Checked MBC	Figure D-2
Date 3/24/16	



Photo D-3

Upper Photo: FT-01-12" x 12" White Floor Tile
with Tan Mastic

Lower Photo: FT-02-12" x 12" Tan Floor Tile
with Tan Mastic

Photograph Date:
March 14 through 16, 2016

Prepared By: GLE Associates, Inc.
2229 NW 41st Terrace, Suite C
Coral Gables, Florida 33135
(352) 335-6648 fax: (352) 335-6187



GLE

ARCHITECTS | ENGINEERS | ENVIRONMENTAL CONSULTANTS

Renovate 3A Gastroenterology and
Pulmonary

Drawn LR	Job No. 16950-00371
Checked MBC	Figure D-3
Date 3/24/16	



Photo D-4

Upper Photo: FT-03-12" x 12" Orange/Brown
Floor Tile with Tan Mastic
Lower Photo: FT-04-12" x 12" Green Floor Tile
with Tan Mastic

Photograph Date:
March 14 through 16, 2016

Prepared By: GLE Associates, Inc.
2229 NW 40th Terrace, Suite C
Culverville, Florida 33445
(352) 335-6618 Fax: (352) 335-6187



GLE
ARCHITECTS | ENGINEERS | ENVIRONMENTAL CONSULTANTS

Renovate 3A Gastroenterology and

Drawn LR	JFH No. 16950-00371
Checked MBC	Figure D-4
Date 3/24/16	

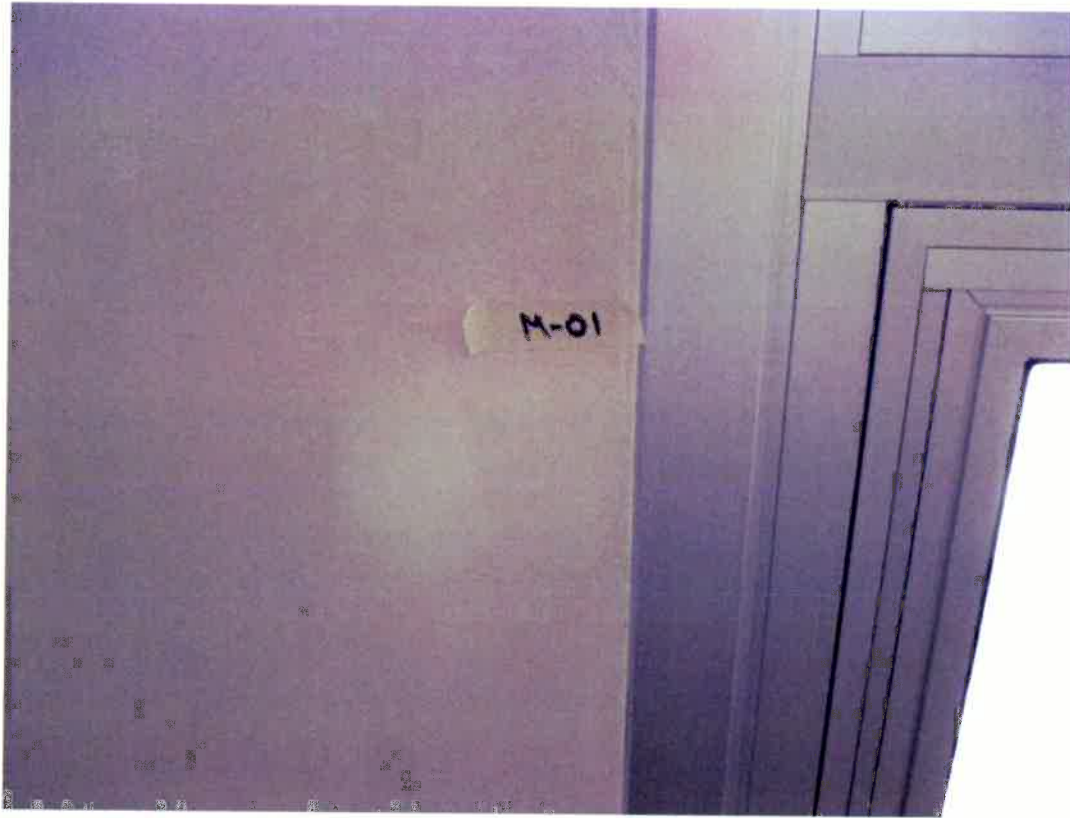


Photo D-5

Upper Photo: M-01-Gray Caulk

Lower Photo: M-02-Ceramic Tile Grout

Photograph Date:
March 14 through 16, 2016

Prepared By: GLE Associates, Inc.
2229 NW 40th Terrace, Suite C
Charleston, Florida 32605
(352) 335-6648 fax (352) 335-6187



GLE

ARCHITECTS • ENGINEERS • ENVIRONMENTAL CONSULTANTS

Renovate 3A Gastroenterology and
Pulmonary

Drawn LR	Job No. 16950-00371
Checked MBC	Figure D-5
Date 3/24/16	



Photo D-6

Upper Photo: M-03-Locker Panels
Lower Photo: M-04-Red Fire Caulk

Photograph Date:
March 14 through 16, 2016

Prepared By: GLE Associates, Inc.
2228 NW 40th Terrace, Suite C
Craswell, Florida 33065
(352) 335-6648 Fax: (352) 335-6187



GLE

ARCHITECTS | ENGINEERS | ENVIRONMENTAL CONSULTANTS

Renovate 3A Gastroenterology and
Pulmonary

Design	Job No.
LR	16950-00371
Checked	Figure
MBC	D-6
Date	
3/24/16	



Photo D-7

Upper Photo: M-05-Black Gasket
Lower Photo: M-06-Brown Firestop

Photograph Date:
March 14 through 16, 2016

Prepared By: GLE Associates, Inc.
2225 NW 40th Terrace, Suite C
Gainesville, Florida 32605
(352) 335-6648 Fax: (352) 335-6187



ARCHITECTS ENGINEERS ENVIRONMENTAL CONSULTANTS

Renovate 3A Gastroenterology and
Pulmonary

Drawn LR	Job No. 16950-00371
Checked MBC	Figure D-7
Date 3/24/16	

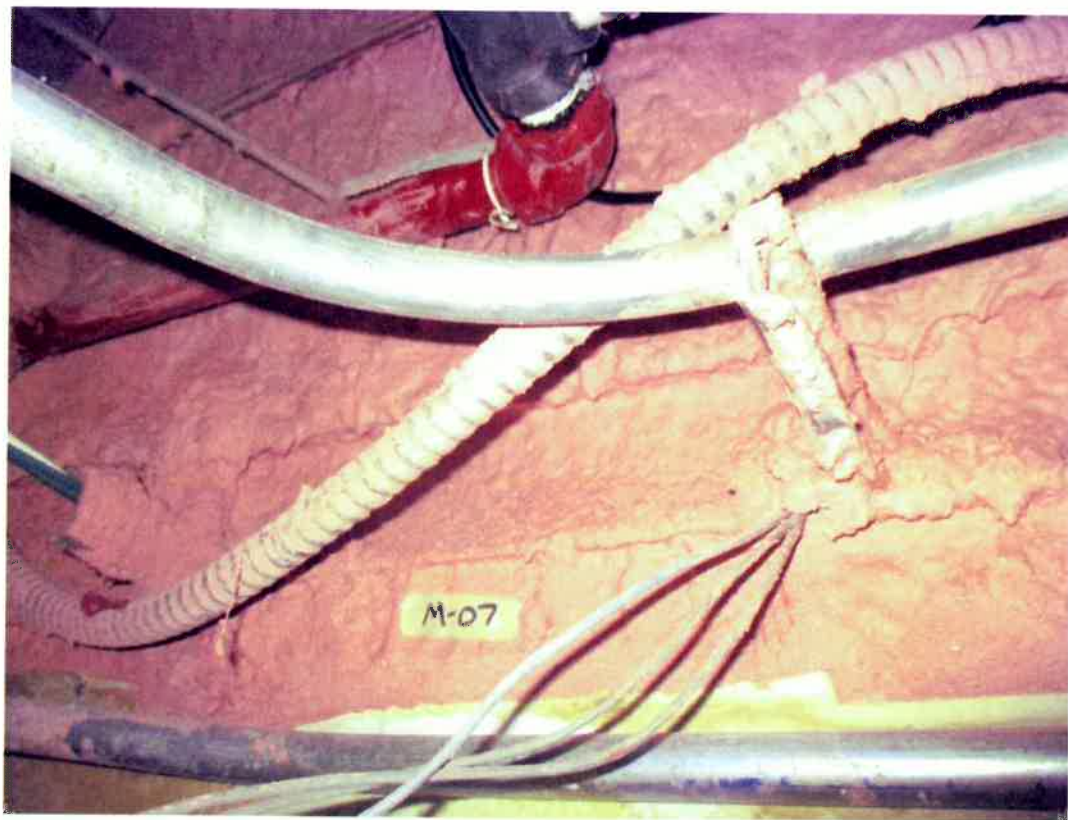


Photo D-8

Upper Photo: M-07-Pink Firestop
Lower Photo: M-08-Gray Sink Insulation

Photograph Date:
March 14 through 16, 2016

Prepared By: GLE Associates, Inc.
2229 15th St. Suite C
Gainesville, Florida 32605
(352) 335-6648 fax: (352) 335-6187



GLE
ARCHITECTS | ENGINEERS | ENVIRONMENTAL CONSULTANTS

Renovate 3A Gastroenterology and Pulmonary

Drawn LR	Job No. 16950-00371
Checked MBC	Figure D-8
Date 3/24/16	



Photo D-9

Upper Photo: MAS-01-Black Mastic
Lower Photo: MAS-02-Tan Mastic

Photograph Date:
March 14 through 16, 2016

Prepared By: GLE Associates, Inc.
2225 110' 43" Terrace, Suite C
Gainesville, Florida 32609
(352) 335-6548 Fax (352) 335-6187



GLE
ARCHITECTS | ENGINEERS | ENVIRONMENTAL CONSULTANTS

Renovate 3A Gastroenterology and
Pulmonary

Drawn LR	Job No. 16950-00371
Checked MBC	Figure D-9
Date 3/24/16	

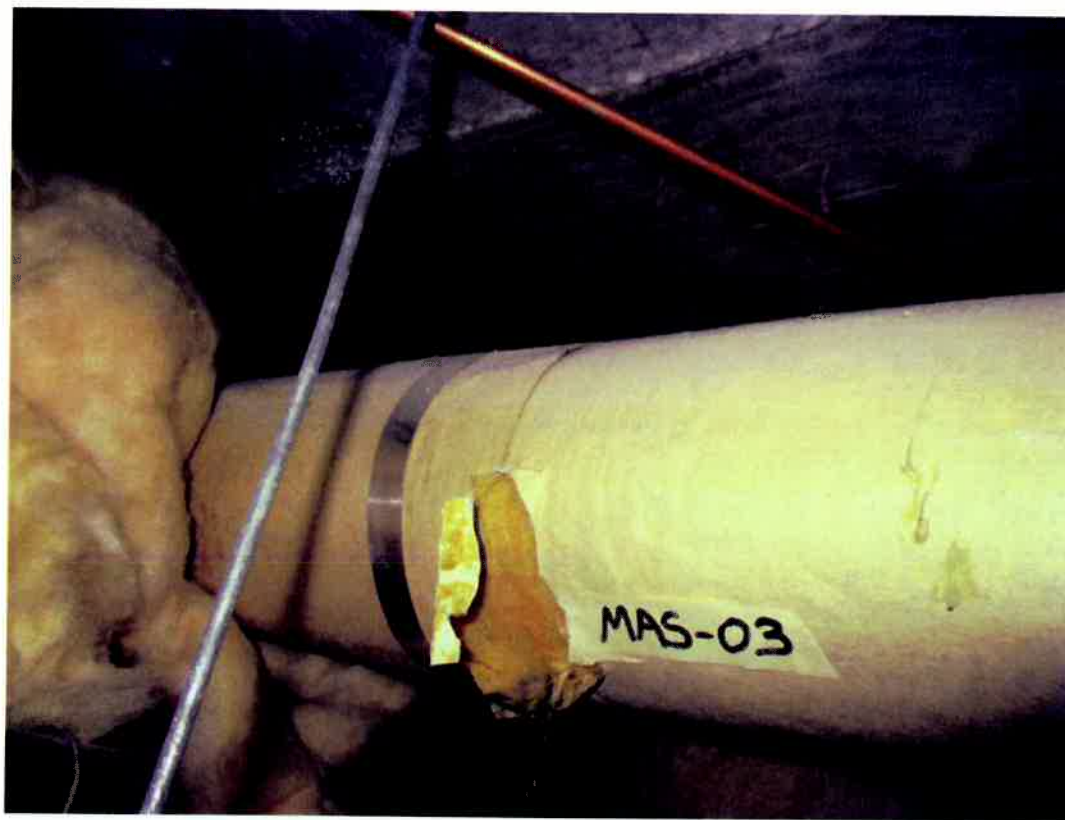


Photo D-10

Upper Photo: MAS-03-Black Mastic
Lower Photo: MAS-04-Tan Mastic

Photograph Date:
March 14 through 16, 2016

Prepared By: GLE Associate, Inc.
2229 186 40th Terrace, Suite C
Cocoa, Florida 32919
(352) 335-6648 fax: (352) 335-6187



GLE

ARCHITECTS | ENGINEERS | ENVIRONMENTAL CONSULTANTS

Renovate 3A Gastroenterology and
Pulmonary

Drawn LR	Job No. 16950-00371
Checked MEC	Figure D-10
Date 3/24/16	



Photo D-11

Upper Photo: MAS-05-Black Mastic
Lower Photo: MAS-06-Tan Mastic

Photograph Date:
March 14 through 16, 2016

Prepared By: GLE Associates, Inc.
2200 11th 40th Terrace, Suite C
Gainesville, Florida 32609
(352) 335-6648 Fax: (352) 335-6187



ARCHITECTS | ENGINEERS | ENVIRONMENTAL CONSULTANTS

Renovate 3A Gastroenterology and
Pulmonology

Drawn LR	Job No. 16950-00371
Checked MEC	Figure D-11
Date 3/24/16	



Photo D-12
 Upper Photo: MAS-07-White Mastic
 Lower Photo: MAS-08-Gray Mastic

Photograph Date:
 March 14 through 16, 2016

Prepared By: GLE Associates, Inc.
 2228 NW 40th Terrace, Suite C
 Gainesville, Florida 32603
 (352) 333-6648 fax: (352) 333-6187



GLE

ARCHITECTS ENGINEERS ENVIRONMENTAL CONSULTANTS

Renovate 3A Gastroenterology and
 Pulmonary

Drawn LR	Job No. 16950-00371
Checked MBC	Figure D-12
Date 3/24/16	



Photo D-13
Upper Photo: MAS-09-Tan Mastic
Lower Photo: MAS10-Red Mastic

Photograph Date:
March 14 through 16, 2016

Prepared By: GLE Associates, Inc.
2225 NW 40th Terrace, Suite C
Coralville, Florida 32605
(352) 335-6648 Fax: (352) 335-6187



GLE

ARCHITECTS | ENGINEERS | ENVIRONMENTAL CONSULTANTS

Renovate 3A Gastroenterology and
Pulmonary

Drawn LR	Job No. 16950-00371
Checked MEC	Figure D-13
Date 3/24/16	



Photo B-14

Upper Photo: MSV-01-Blue/Gray Sheet Vinyl
and Tan Mastic
Lower Photo: PL-01-White over Tan Plaster

Photograph Date:
March 14 through 16, 2016

Prepared By: GLE Associates, Inc.
2200 NW 40th Terrace, Suite C
Gainesville, Florida 32603
(352) 335-6648 fax: (352) 335-6187



GLE
ARCHITECTS ENGINEERS ENVIRONMENTAL CONSULTANTS

Renovate 3A Gastroenterology and
Pulmonary

Drawn LR	Job No. 16950-00371
Checked MBC	Figure B-14
Date 3/24/16	



Photo D-15

Upper Photo: VB-01-6" Blue Cove Base with Tan Mastic

Lower Photo: VB-02-4" Tan Cove Base with Tan Mastic

Photograph Date:
March 14 through 16, 2016

Prepared By: GLE Associates, Inc.
2220 NW 40th Terrace, Suite C
Gainesville, Florida 32605
(352) 335-0648 Fax: (352) 335-6187



Renovate 3A Gastroenterology and
Pulmonary

Drawn LR	Job No. 16950-00371
Checked MPC	Figure D-15
Date 3/24/16	



Photo D-16

Upper Photo: VB-03-6" Blue Cove Base with
Tan Mastic
Lower Photo: Fire Doors

Photograph Date:
March 14 through 16, 2016

Prepared By: GLE Associates, Inc.
2228 18th Ave SE, Suite C
Cincinnati, Florida 33003
(352) 335-6648 Fax: (352) 335-6187



GLE

ARCHITECTS | ENGINEERS | ENVIRONMENTAL CONSULTANTS

Renovate 3A Gastroenterology and
Pulmonary

Drawn LR	Job No. 16990-00371
Checked MBC	Figure D-16
Date 3/24/16	



Photo D-17
Upper Photo: Vibration Damper

Photograph Date:
March 14 through 16, 2016

Prepared By: GLE Associates, Inc.
2228 NW 40th Terrace, Suite C
Orlando, Florida 32805
(352) 335-6648 Fax: (352) 335-6187



GLE

ARCHITECTS | ENGINEERS | ENVIRONMENTAL CONSULTANTS

Renovate 3A Gastroenterology and
Pulmonary

Drawn LR	Job No. 16950-00371
Checked MBC	Figure D-17
Date 3/24/16	