

VA PROJECT NO. 573-15-102

RENOVATE 3A FOR GASTROENTEROLOGY  
AND PULMONARY

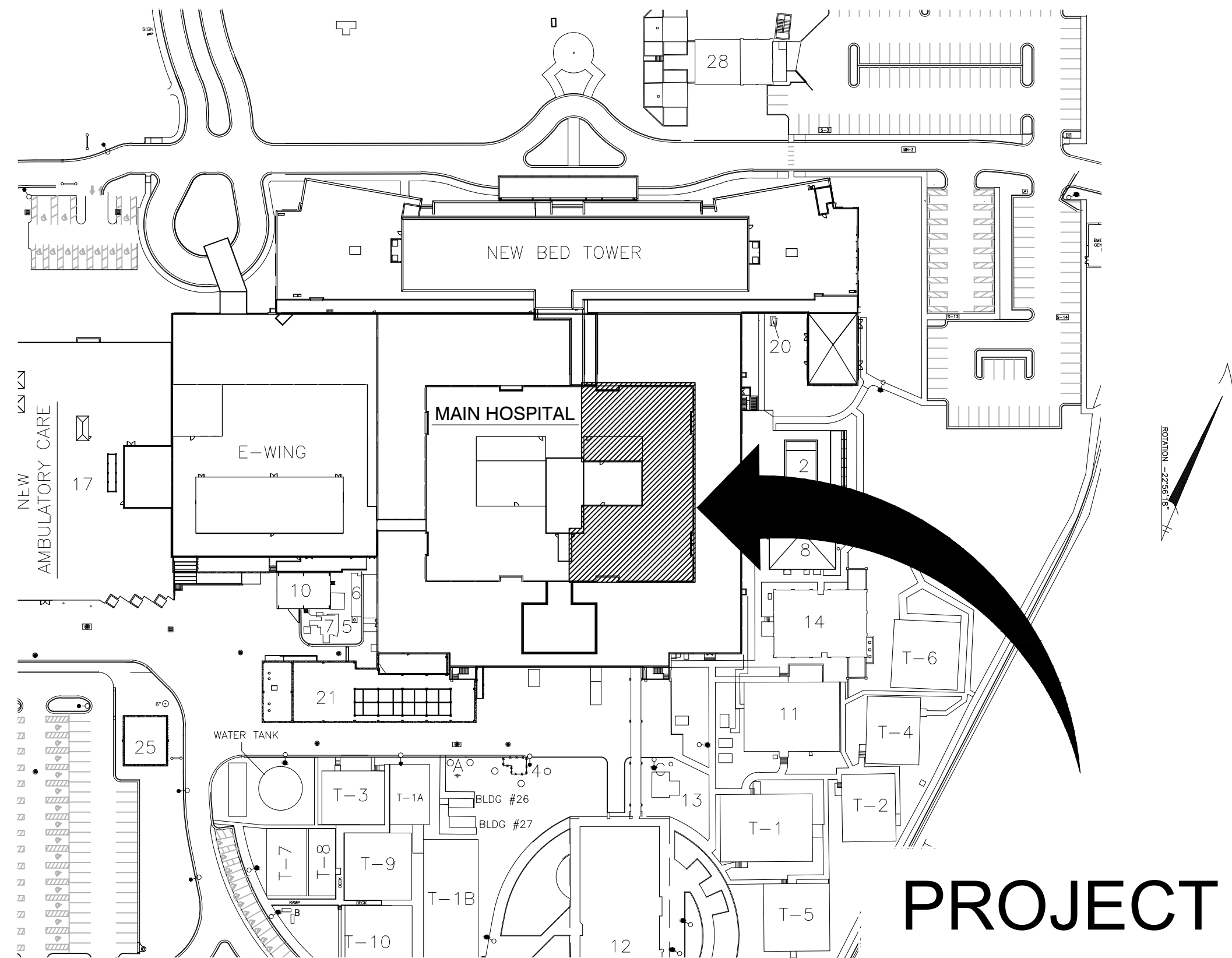
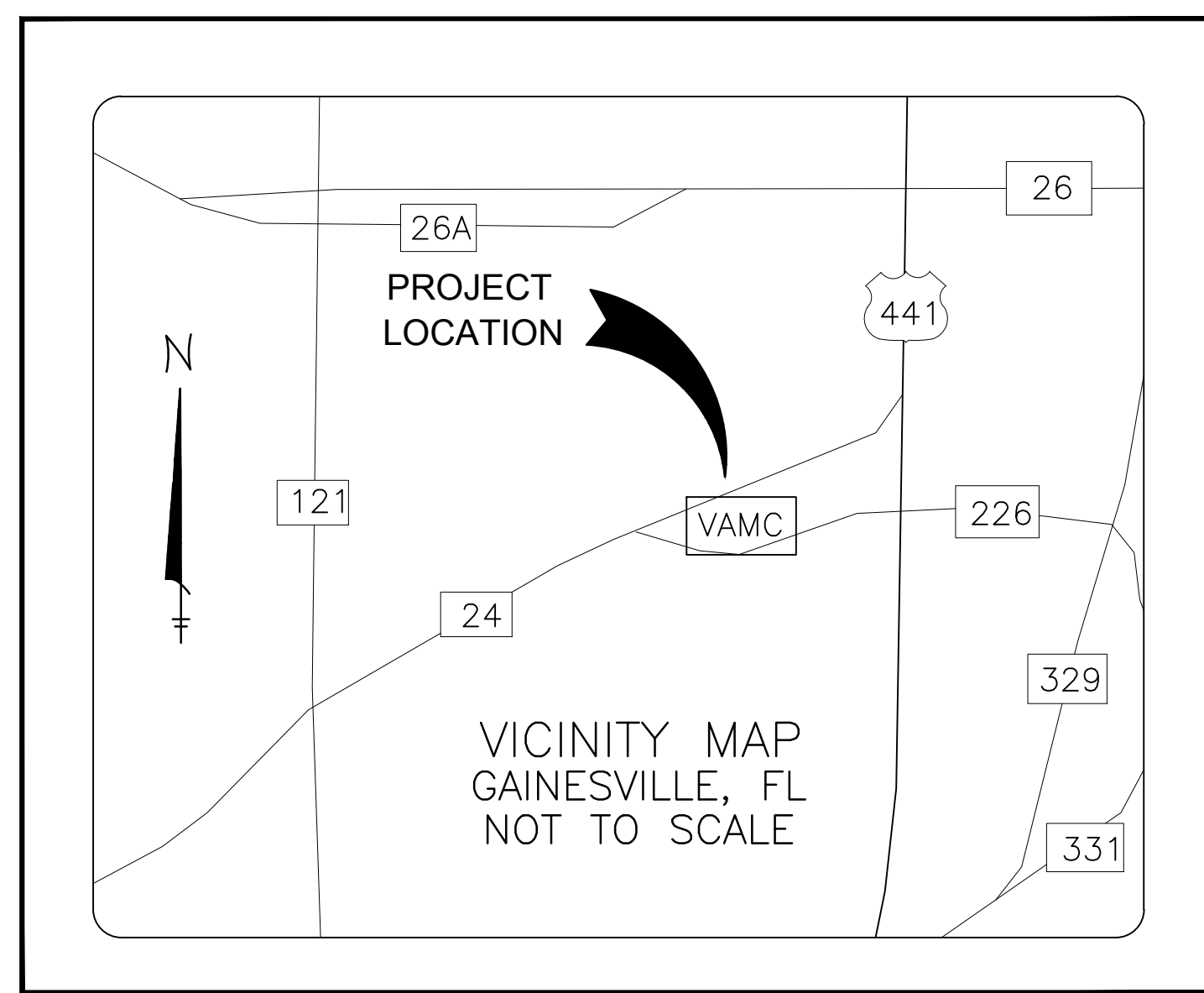
MALCOM RANDALL VETERANS AFFAIRS MEDICAL CENTER

1601 SW ARCHER ROAD

GAINESVILLE, FLORIDA 32608

CONTRACT NO. VA248-15-C-0159

VICINITY MAP



PROJECT  
LOCATION MAP

DESIGNED FOR:



DEPARTMENT OF VETERANS AFFAIRS  
NORTH FLORIDA/SOUTH GEORGIA  
VETERANS HEALTH SYSTEM  
1601 SW ARCHER ROAD  
GAINESVILLE, FLORIDA 32608

DESIGNED BY:



3603 NW 98TH STREET, SUITE B  
GAINESVILLE, FLORIDA 32606  
PH: (352) 474-6124  
FAX: (352) 533-4437  
CERT OF AUTH: FL #29578  
EXPIRES: 02/28/2017  
AKEA PROJ. NO. 110-15  
VA PROJECT NO: 573-15-102  
VA CONTRACT NO. VA248-15-C-0159

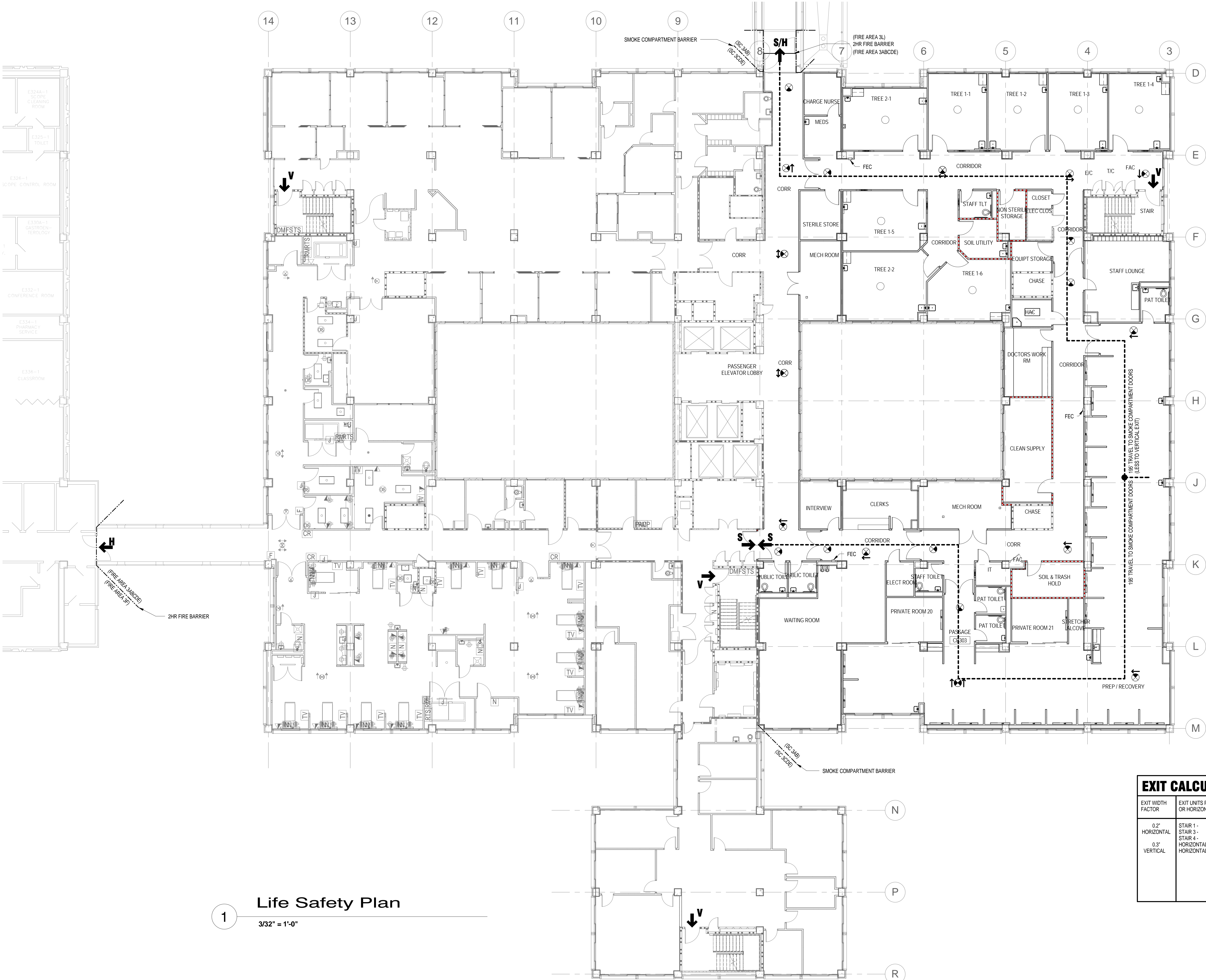
INDEX OF DRAWINGS		
DWG.	DESCRIPTION	SHEET
G001	TITLE PAGE, LOCATION MAP, AND INDEX OF DRAWINGS	1
A101	LIFE SAFETY PLAN	2
A201	ARCHITECTURAL DEMOLITION AND NEW PLANS - PHASE 1	3
A202	ARCHITECTURAL DEMOLITION AND NEW PLANS - PHASE 2	4
A203	ARCHITECTURAL DEMOLITION AND NEW PLANS - PHASE 3	5
A241	REFLECTED CEILING PLAN	6
A401	ENLARGED PLAN - PHASE 1	7
A402A	ENLARGED PLAN - PHASE 2 NORTH	8
A402B	ENLARGED PLAN - PHASE 2 SOUTH	9
A403	ENLARGED PLAN - PHASE 3	10
A440	INTERIOR ELEVATIONS	11
A601	PARTITION TYPES	12
A602	SCHEDULES, DOOR AND FRAME ELEVATIONS	13
A603	DETAILS	14
A604	DETAILS	15
A605	DETAILS	16
A801	CASEWORK DETAILS	17
MH001	MECHANICAL ABBREVIATIONS	18
MH002	MECHANICAL LEGEND	19
MH003	PIPING & VALVE SYMBOLS	20
MD100	PHASE 1 - AREA A - FLOOR PLAN - HVAC DEMOLITION	21
MD101	PHASE 2 - AREA B - FLOOR PLAN - HVAC DEMOLITION	22
MD102	PHASE 3 - AREA A - FLOOR PLAN - HVAC DEMOLITION	23
MH200	AREA A & B - OVERALL FLOOR PLAN - NEW HVAC	24
MH201	PHASE 1 - AREA A - FLOOR PLAN - NEW HVAC	25
MH202	PHASE 2&3 - AREA B - FLOOR PLAN - NEW HVAC	26
MH400	MECHANICAL ROOM SECTIONS	27
MH401	PARTIAL ROOF PLANS	28
MP200	PHASE 1 - AREA A - FLOOR PLAN - NEW MECHANICAL PIPING	29
MP201	PHASE 2&3 - AREA B - FLOOR PLAN - NEW MECHANICAL PIPING	30
MH600	MECHANICAL EQUIPMENT SCHEDULES	31
MH601	MECHANICAL EQUIPMENT SCHEDULES	32
MH602	MECHANICAL EQUIPMENT SCHEDULES	33
MH700	HVAC DETAILS	34
MH701	HVAC DETAILS	35
MH702	HVAC DETAILS	36
MH703	HVAC DETAILS	37
MH800	MECHANICAL THERMAL ZONES AND ROOMS MAPS	38
MH900	CONTROLS SYMBOLS & ABBREVIATIONS	39
MH901	CONTROLS POINTS LIST & SCHEMATICS	40
MH902	CONTROLS POINTS LIST & SCHEMATICS	41
PL001	PLUMBING LEGEND, ABBREVIATIONS AND SCHEDULE	42
PL100	3RD FLOOR PLAN - DEMOLITION - SANITARY AND VENT PIPING - PHASE 1	43
PL101	3RD FLOOR PLAN - DEMOLITION - SANITARY AND VENT PIPING - PHASE 2 & 3	44
PL200	3RD FLOOR PLAN - NEW WORK - SANITARY AND VENT PIPING - PHASE 1	45
PL201	3RD FLOOR PLAN - NEW WORK - SANITARY AND VENT PIPING - PHASE 2 & 3	46
PL202	3RD FLOOR PLAN - NEW WORK - DOMESTIC WATER PIPING - PHASE 1	47
PL203	3RD FLOOR PLAN - NEW WORK - DOMESTIC WATER PIPING - PHASE 2 & 3	48
PL204	3RD FLOOR PLAN - NEW WORK - MEDICAL GAS PIPING - PHASE 1	49
PL205	3RD FLOOR PLAN - NEW WORK - MEDICAL GAS PIPING - PHASE 2 & 3	50
PL400	SANITARY AND VENT RISER DIAGRAMS	51
PL401	DOMESTIC WATER RISER DIAGRAMS	52
PL700	PLUMBING DETAILS	53
ED01	ELECTRICAL NOTES, SYMBOLS, AND ABBREVIATIONS	54
ED101	3RD FLOOR - ELECTRICAL DEMOLITION	55
EL101	3RD FLOOR - LIGHTING	56
EL501	LIGHTING DETAILS	57
EP101	3RD FLOOR - POWER	58
EP102	2ND FLOOR, 4TH FLOOR, & PENTHOUSE ROOF - POWER	59
EP501	ELECTRICAL DETAILS	60
EP601	POWER RISER DIAGRAMS AND EQUIPMENT SCHEDULE	61
EP701	ELECTRICAL PANEL SCHEDULES	62
ET101	3RD FLOOR - SYSTEMS	63
ET501	SYSTEMS DETAILS	64
ET601	SYSTEMS RISER DIAGRAMS	65
FS101	EXISTING FIRE SPRINKLER PLAN	66
FS102	AREA HAZARD CLASSIFICATION PLAN	67
FS103	FIRE SPRINKLER PLAN	68
FA101	FIRE ALARM NOTES AND DETAILS	69
FA102	EXISTING FIRE ALARM PLAN	70
FA103	FIRE ALARM PLAN	71
LS101	LIFE SAFETY PLAN	72

FINAL DESIGN  
JULY 15, 2016

FINAL DESIGN  
APPROVED FOR CONSTRUCTION

Revisions:		Date:		CONSULTANTS:		ENGINEER-OF-RECORD STEPHEN T. STEFFE FL P.E. NO. 70349		ARCHITECT/ENGINEERS: <b>AKEA</b> Design, Inc. 3603 NW 98th Street, Suite B Gainesville, FL 32606 Phone: (352) 474-6124 Fax: (352) 474-6324 COA: FL #29578 AKEA Project No. 110-15		Drawing Title TITLE PAGE, LOCATION MAP, AND INDEX OF DRAWINGS		Project Title RENOVATE 3AB FOR GASTROENTEROLOGY AND PULMONARY		Project Number 573-15-102		Building Number 1		Location GAINESVILLE, FLORIDA		Drawing Number G001		1 OF 72		Office of Construction and Facilities Management		Department of Veterans Affairs	
------------	--	-------	--	--------------	--	---	--	--	--	---	--	--	--	------------------------------	--	----------------------	--	----------------------------------	--	------------------------	--	---------	--	---	--	-----------------------------------	--

three inches = one foot  
one and one half inches = one foot  
one inch = one foot  
three quarters inch = one foot  
one half inch = one foot  
three eighths inch = one foot  
one quarter inch = one foot  
one eighth inch = one foot



1 Life Safety Plan  
3/32" = 1'-0"

LIFE SAFETY PLAN NOTES

**MAJOR CODES IN EFFECT**  
NFPA 101 - LIFE SAFETY CODE 2012  
IBC 2009 - BUILDING ELEMENTS  
IFAS - ACCESSIBILITY REQUIREMENTS  
NFPA - FIRE PROTECTION  
NEC - ELECTRICAL  
NSRC - PLUMBING

FLOOR IS MULTIPLE, SEPARATED OCCUPANCY:  
PROJECT AREA IS HEALTHCARE OCCUPANCY

TYPE 1-A CONSTRUCTION FOR UNLIMITED AREA, HEIGHT,  
NUMBER OF STORIES.

IBC, TYPE 1-A  
NFPA 101: TYPE 1 (332)

**GENERAL NOTES**  
PROJECT AREA WILL BE SPRINKLERED.  
EXISTING BUILDING IS NON-SPRINKLERED, BUT IS  
SCHEDULED TO BE SPRINKLERED.

DISTANCES TO EXIT OR SMOKE COMPARTMENT DOORS ARE  
WITHIN 200 FEET AS PERMITTED IN SPRINKLERED BUILDINGS  
OR BUILDINGS SCHEDULED TO BE SPRINKLERED.

PROJECT AREA SMOKE COMPARTMENT IS 17,175 SQUARE  
FEET, WHICH IS LESS THAN THE 22,500 SQUARE FEET  
ALLOWED.

SHEET KEYNOTES

LEGEND

- 1 HOUR FIRE PARTITION
  - 1 HOUR FIRE/SMOKE BARRIER
  - 2 HOUR FIRE BARRIER
  - 2 HOUR FIRE/SMOKE BARRIER
- 100' S  
100' H/V
- TRAVEL PATH AND DISTANCE TO CROSS  
CORRIDOR SMOKE DOORS  
(MAX. 200' PER NFPA 101 18.3.7.1)
- TRAVEL PATH AND DISTANCE TO  
HORIZONTAL OR VERTICAL EXIT  
(MAX. 200' PER NFPA 101 18.2.6.1)
- EXIT  
S INDICATES SMOKE COMPARTMENT  
H INDICATES HORIZONTAL EXIT  
V INDICATES VERTICAL EXIT
- FEC  
FIRE EXTINGUISHER CABINET
- EXIT SIGNS  
(SEE LIGHTING PLANS)

OCCUPANT CALCULATIONS

USE	AREA (SF)	+ OCCUPANT LOAD FACTOR	= OCCUPANT LOAD
GROUP I-2 SFPERSON INPATIENT AREAS	36,610	+ 120	= 322

EXIT CALCULATIONS

EXIT WIDTH FACTOR	EXIT UNITS PER STAIRWAY OR HORIZONTAL EXIT	EXIT UNITS PROVIDED	EXIT UNITS REQUIRED
0.2' HORIZONTAL	STAIR 1 - STAIR 3 - STAIR 4 -	42' ÷ 0.3' = 140 42' ÷ 0.3' = 140 42' ÷ 0.3' = 140	840
0.3' VERTICAL	HORIZONTAL TO PSS - HORIZONTAL TO UNIT B -	42' ÷ 0.2' = 210 42' ÷ 0.2' = 210	322
		EXIT UNITS PROVIDED EXCEED UNITS REQUIRED	

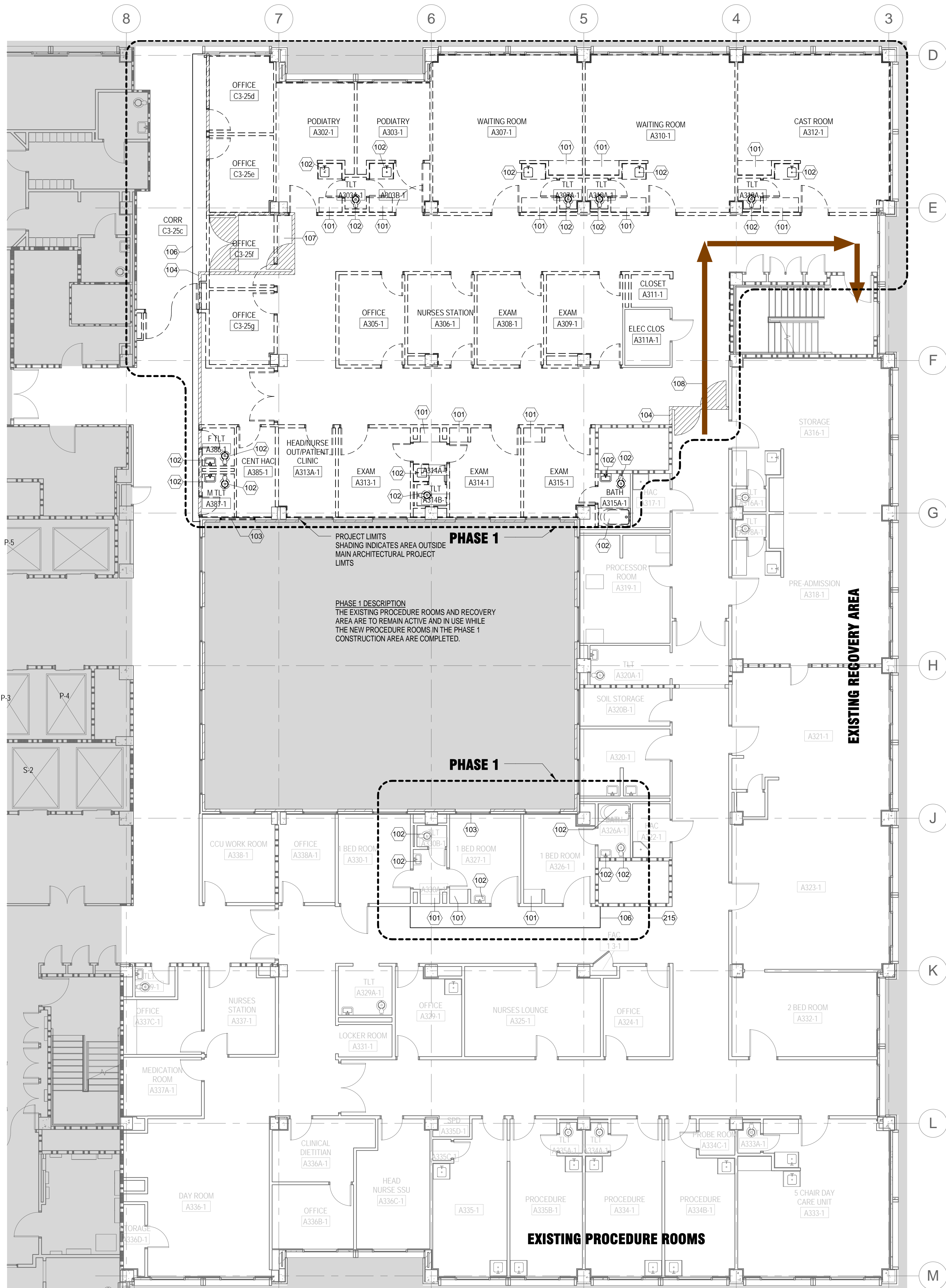
FINAL DESIGN  
APPROVED FOR CONSTRUCTION

CONSULTANTS:		ARCHITECT-OF-RECORD THOMAS H. GYLLSTROM FL. REG. NO. AR0000908	ARCHITECT/ENGINEERS: <b>AKEA</b> Design, Inc. 3603 NW 98th Street, Suite B Gainesville, FL 32606 Phone: (352) 474-6124 Fax: (352) 474-6324 COA: FL #29578 AKEA Project No. 110-15	Drawing Title <b>LIFE SAFETY PLAN</b>	Project Title <b>RENOVATE 3AB FOR GASTROENTEROLOGY AND PULMONARY</b>	Project Number 573-15-102
Revisions:				Approved: Project Director	Location <b>GAINESVILLE, FLORIDA</b>	Building Number 1
Date				Date JULY 15, 2016	Checked	Drawing Number <b>A101</b> 2 OF 72

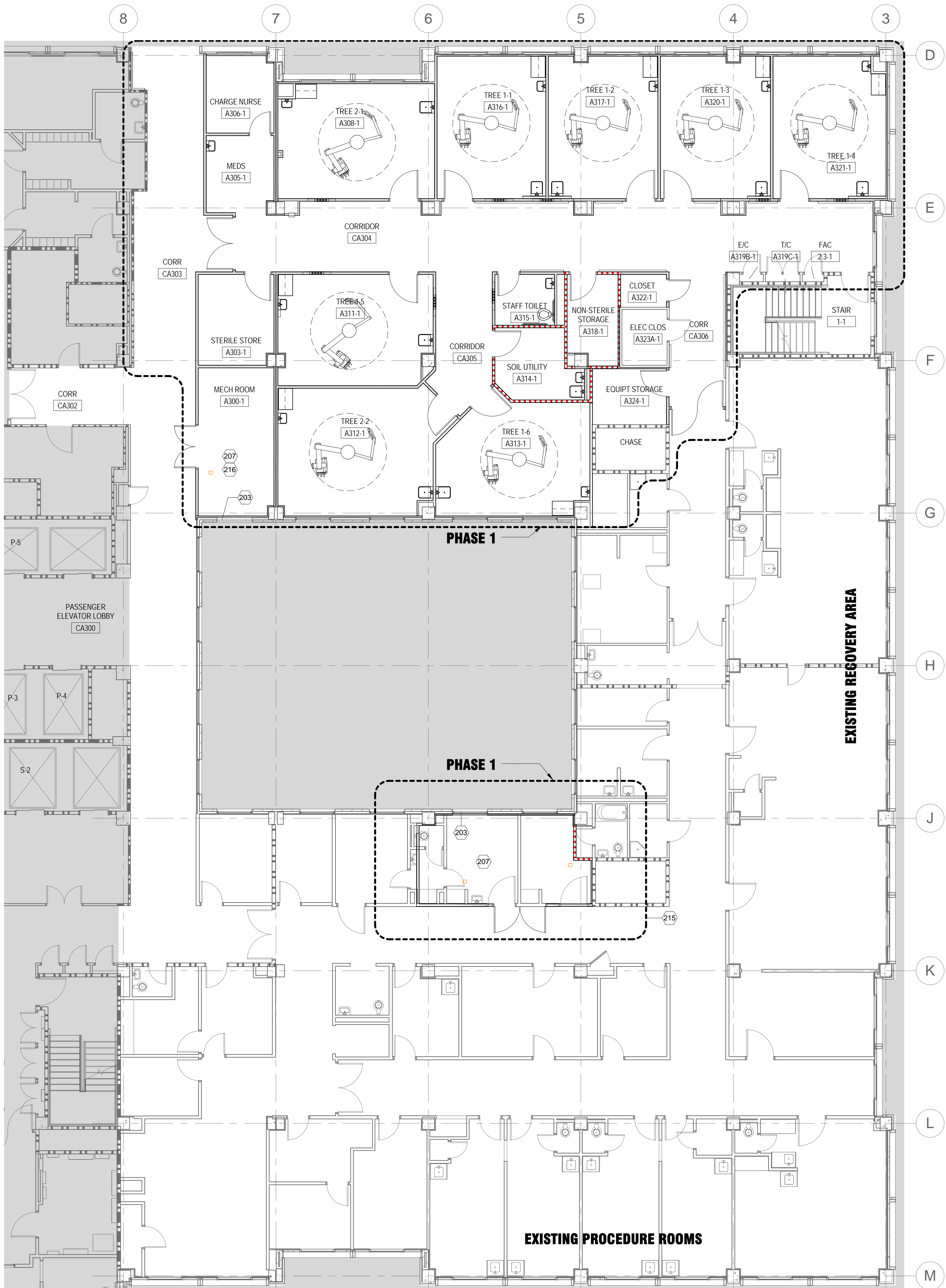
Office of  
Construction  
and Facilities  
Management  
Department of  
Veterans Affairs



three inches = one foot  
one and one half inches = one foot  
one inch = one foot  
three quarters inch = one foot  
one half inch = one foot  
three eighths inch = one foot  
one quarter inch = one foot  
one eighth inch = one foot



1 Demo Plan - Phase 1  
1/8" = 1'-0"



2 New Plan - Phase 1  
1/8" = 1'-0"

### DEMO PLAN NOTES

1. SCREENED LINES AND PATTERNS INDICATE EXISTING ELEMENTS TO REMAIN. HEAVY DASHED LINES INDICATE EXISTING ELEMENTS TO BE REMOVED.
2. MAINTAIN CONSTRUCTION AREA UNDER NEGATIVE PRESSURE RELATIVE TO ADJACENT UNPIPED AREAS. SEE SPECIFICATIONS FOR ADDITIONAL INFECTION CONTROL REQUIREMENTS.
3. KEYNOTES ARE PROVIDED TO ASSIST WITH IDENTIFYING SOME SPECIFIC ELEMENTS THAT ARE TO BE DEMOLISHED AND ARE BASED ON EXISTING DRAWINGS. ALL ELEMENTS TO BE DEMOLISHED MAY NOT BE INDICATED. REFER TO MEP DRAWINGS FOR ADDITIONAL DEMOLITION REQUIREMENTS. FIELD VISIT THE PROJECT AREA AND IDENTIFY THE DEMOLITION EXTENTS REQUIRED. THE PROJECT INTENT IS TO REMOVE EVERYTHING BACK TO BUILDING STRUCTURE AND EXTERIOR WALLS, EXCEPT FOR A FEW SELECT WALLS, WITHIN THE PROJECT LIMITS.
4. REMOVE EXISTING WALL BASE, CORNER GUARDS AND WALL PROTECTION WITHIN THE PROJECT LIMITS. PATCH EXISTING PARTITIONS TO REMAIN THAT ARE DAMAGED BY THE REMOVAL OF THESE ITEMS.
5. REMOVE EXISTING FLOOR FINISHES WITHIN THE PROJECT LIMITS. FILL DEPRESSIONS AND RECESSED SLAB AREAS. LEVEL FLOORS IN PREPARATION FOR NEW FINISH.
6. REMOVE EXISTING CEILING AND SOFFITS WITHIN THE PROJECT LIMITS. EXISTING CEILINGS INCLUDE RADIANT CEILING PANEL SYSTEMS (SEE MECHANICAL DEMOLITION DRAWINGS).
7. REMOVE EXISTING GYPSUM BOARD, METAL FRAMING, AND INSULATION AT EXTERIOR WALLS WITHIN THE PROJECT LIMITS.
8. REMOVE EXISTING METAL WINDOW SILLS AT EXTERIOR WINDOWS WITHIN THE PROJECT LIMITS.
9. REMOVE EXISTING DEVICES AS SHOWN ON MEP DRAWINGS. REPAIR AND FINISH WALLS WHERE DEVICES ARE REMOVED.
10. REPLACE, REPAIR, AND EXTEND EXISTING ELEMENTS INCLUDING WALLS AND WALL FINISHES, FLOORS AND FLOOR FINISHES, AND CEILING FINISHES IN AREAS OF WORK TO PROVIDE INCONSPICUOUS TRANSITION BETWEEN EXISTING AND NEW ELEMENTS.
11. VERIFY INTEGRITY OF EXISTING FIRE RATED CONSTRUCTION. PATCH AND REPAIR WHERE THE EXISTING RATED CONSTRUCTION HAS BEEN COMPROMISED THROUGH THIS OR PREVIOUS RENOVATIONS TO PROVIDE RATING INDICATED.
12. BEFORE DEMOLITION, ERECT 1-HR FIRE RATED BARRIERS BETWEEN EXISTING SPACE AND CONSTRUCTION AREA.


### FLOOR PLAN NOTES

1. DIMENSIONS ARE TO: THE FACE OF FINISH OF PARTITIONS, EXISTING ELEMENTS, EQUIPMENT, MASONRY, OR CONCRETE. STRUCTURAL GRIDS, AND CLEAR JAMB OPENING OF DOORS.
2. FIELD VERIFY ACTUAL CONDITIONS AND DIMENSIONS TO EXISTING ELEMENTS. NOTIFY ARCHITECT OF DISCREPANCIES AND UNDOCUMENTED CONDITIONS THAT CONFLICT WITH NEW WORK.
3. PROVIDE C20 (INSULATED PARTITION) AT EXTERIOR WALLS WITHIN PROJECT LIMITS UNLESS NOTED OTHERWISE. PROVIDE SS-1 SOLID SURFACE WINDOW SILL AT WINDOWS. SEE 14/A604 FOR TYPICAL EXTERIOR WALL SECTION.

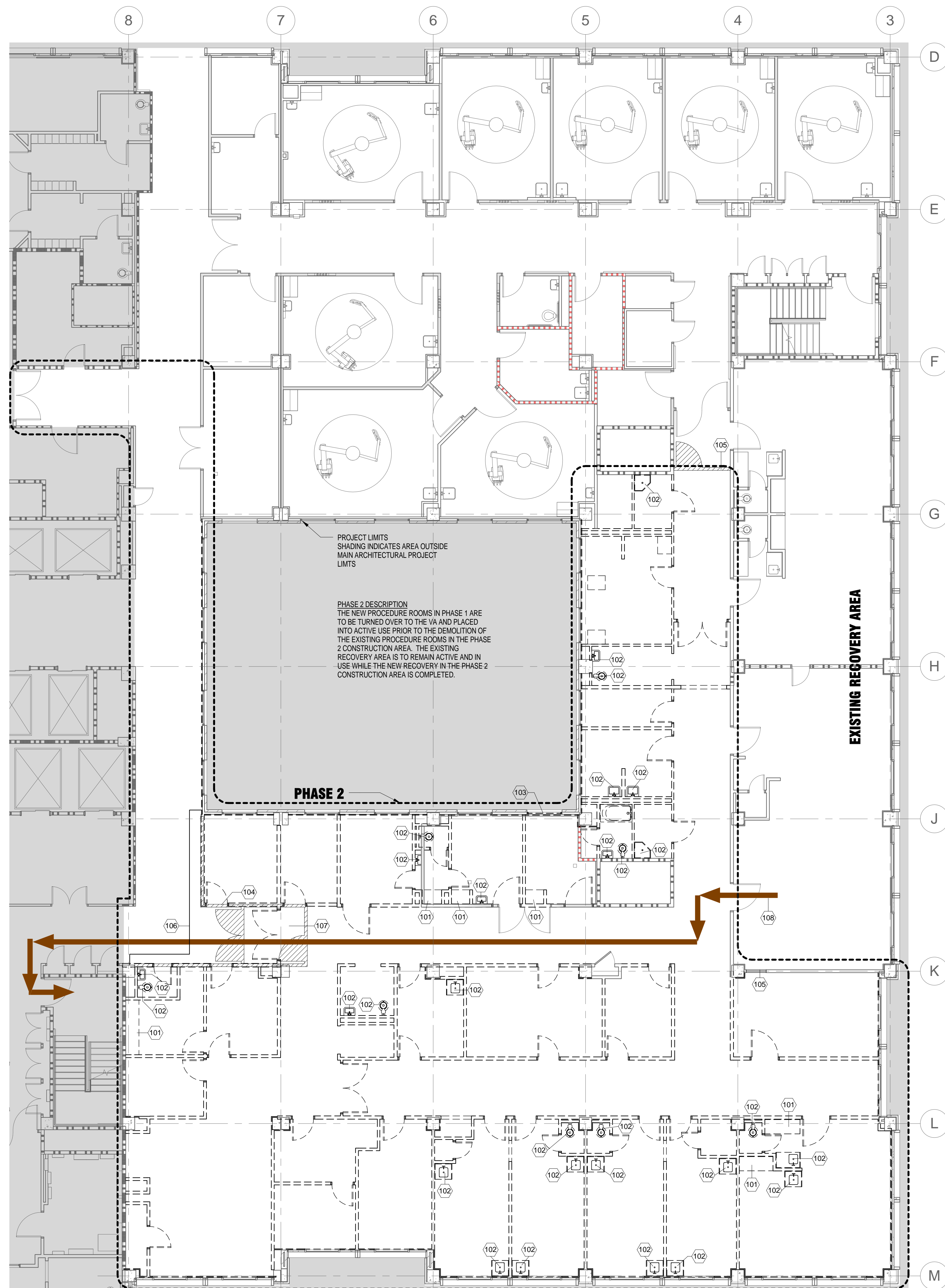
### SHEET KEYNOTES

- |     |   |
|-----|---|
| 101 | REMOVE EXISTING CASEWORK/METAL LOCKERS  |
| 102 | REMOVE EXISTING PLUMBING FIXTURE  |
| 103 | REMOVE EXISTING WINDOW  |
| 104 | CONSTRUCT NEW WALL/DOOR TO REMAIN AT START OF PROJECT TO SERVE AS CONSTRUCTION BOUNDARY   |
| 106 | SOFT TEMPORARY CONSTRUCTION BARRIER FOR SHORT DURATION AREA OF WORK - PLASTIC PARTITION WITH ZIPPER DOOR                          |
| 107 | INFECTION CONTROL VESTIBULE WITH STICKY WALK-OFF MATS   |
| 108 | MAINTAIN CLEAR EMERGENCY EGRESS PATH THROUGH CONSTRUCTION AREA  |
| 203 | PROVIDE NEW LOUVER. SEE DETAIL 13/A604 AND MECHANICAL.  |
| 207 | PROVIDE MECHANICAL HOUSEKEEPING PAD. SEE MECHANICAL FOR DETAILS. SIZE PER SELECTED EQUIPMENT.                                     |
| 215 | COMPLETE MECHANICAL ROOM IN THIS AREA DURING PHASE 1. SEE MEP DRAWINGS. NEW ARCHITECTURAL WORK IS SHOWN ON PHASE 2 ENLARGED PLAN. |
| 216 | MECHANICAL PENETRATION UP THROUGH CONCRETE DECK ABOVE. SEE MECHANICAL DRAWINGS AND 11/A603.                                       |

FINAL DESIGN  
APPROVED FOR CONSTRUCTION

		CONSULTANTS:	ARCHITECT-OF-RECORD THOMAS H. GYLLSTROM FL. REG. NO. AR00009098	ARCHITECT/ENGINEERS: <div>AKEA Design, Inc. 3603 NW 98th Street, Suite B Gainesville, FL 32606 Phone: (352) 474-6124 Fax: (352) 474-6324 COA: FL #29578 AKEA Project No. 110-15</div>	Drawing Title	Project Title	Project Number 573-15-102	Office of Construction and Facilities Management		
					ARCHITECTURAL DEMOLITION AND NEW PLANS - PHASE 1	RENOVATE 3AB FOR GASTROENTEROLOGY AND PULMONARY	Building Number 1			
					Approved: Project Director	Location GAINESVILLE, FLORIDA	Drawing Number A201 3 OF 72		 Department of Veterans Affairs	
						Date JULY 15, 2016	Checked			Drawn
Revisions:	Date									

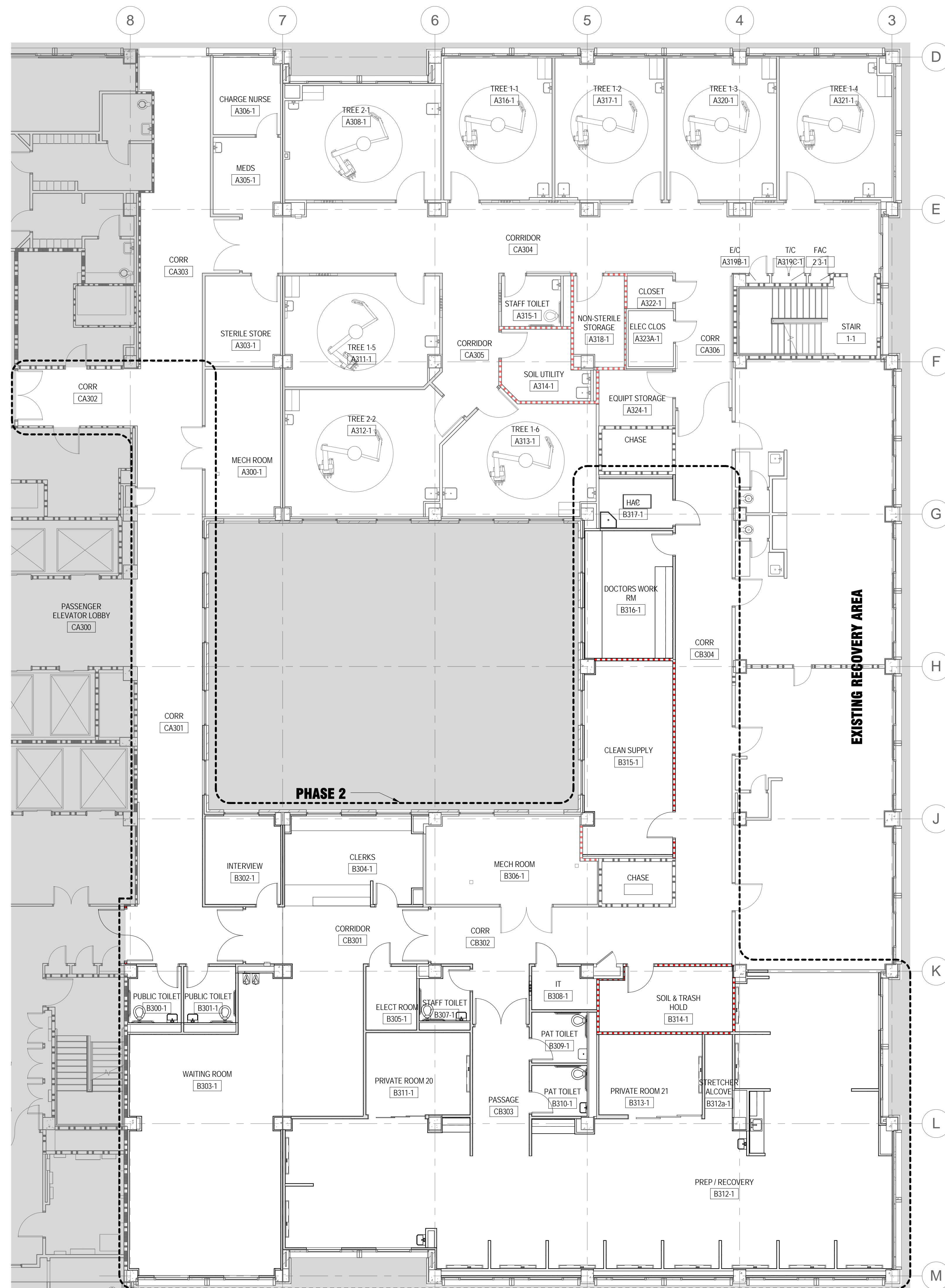




## Demo Plan - Phase 2

---

$1/8'' = 1'-0''$



## New Plan - Phase 2

$$1/8'' = 1'-0''$$

## DEMO PLAN NOTES

1. SCREENED LINES AND PATTERNS INDICATE EXISTING ELEMENTS TO REMAIN. HATCHED LINES INDICATE EXISTING ELEMENTS TO BE REMOVED.
2. MAINTAIN CONSTRUCTION AREA UNDER NEGATIVE PRESSURE RELATIVE TO ADJACENT OCCUPIED AREAS. SEE SPECIFICATIONS FOR ADDITIONAL INFECTION CONTROL REQUIREMENTS.
3. KEYNOTES ARE PROVIDED TO ASSIST WITH IDENTIFYING SOME SPECIFIC ELEMENTS THAT ARE TO BE DEMOLISHED AND ARE BASED ON EXISTING DRAWINGS. ALL ELEMENTS TO BE DEMOLISHED MAY BE IDENTIFIED BY REFERENCE TO MEP DRAWINGS FOR ADDITIONAL DEMOLITION REQUIREMENTS. FIELD VISIT THE PROJECT AREA AND IDENTIFY THE DEMOLITION ITEMS REQUIRED. PROVIDE A KEYNOTE TO IDENTIFY ALL THE FOLLOWING BACK TO BUILDING STRUCTURE AND EXTERIOR WALLS, EXCEPT FOR A FEW SELECT WALLS, WITHIN THE PROJECT LIMITS.
4. REMOVE EXISTING WALL BASE, CORNER GUARDS AND WALL PROTECTION WITHIN THE PROJECT LIMITS. PATCH EXISTING SURFACES TO REMAIN THAT ARE DAMAGED BY THE REMOVAL OF THESE ITEMS.
5. REMOVE EXISTING FLOOR FINISHES WITHIN THE PROJECT LIMITS. FILL DEPRESSIONS AND RECESSED SLAB AREAS. LEVEL FLOORS IN PREPARATION FOR NEW FINISH.
6. REMOVE EXISTING CEILINGINGS AND SOFFITS WITHIN THE PROJECT LIMITS. EXISTING CEILINGS INCLUDE RADIANT CEILING PANEL SYSTEMS (SEE MECHANICAL DEMOLITION DRAWINGS).
7. REMOVE EXISTING GYPSUM BOARD, METAL FRAMING, AND INSULATION AT EXTERIOR WALLS WITHIN THE PROJECT LIMITS.
8. REMOVE EXISTING METAL WINDOW SILLS AT EXTERIOR WINDOWS WITHIN THE PROJECT LIMITS.
9. REMOVE EXISTING DEVICES AS SHOWN ON MEP DRAWINGS. REPAIR AND FINISH WALLS WHERE DEVICES ARE REMOVED.
10. REPLACE, REPAIR, AND EXTEND EXISTING ELEMENTS (INCLUDING WALLS AND WALL FINISHES, FLOORS AND FLOOR FINISHES, AND CEILING AND CEILING FINISHES) IN AREAS OF WORK TO PROVIDE INCONSPICUOUS TRANSITION BETWEEN EXISTING AND NEW ELEMENTS.
11. VERIFY INTEGRITY OF EXISTING FIRE RATED CONSTRUCTION. PATCH AND REPAIR WHERE THE EXISTING RATED CONSTRUCTION IS NOT BREACHED OR WEAKENED THROUGH THIS OR PREVIOUS REPAIRS TO PROVIDE RATED INTEGRITY.
12. BEFORE DEMOLITION, ERECT 1-HR FIRE RATED BARRIERS BETWEEN EXISTING SPACE AND CONSTRUCTION AREA.

### FLOOR PLAN NOTES

1. DIMENSIONS ARE TO: THE FACE OF FINISH OF PARTITIONS,  
EXISTING ELEMENTS, EQUIPMENT, MASONRY, OR CONCRETE;  
STRUCTURAL GRIDS; AND CLEAR JAMB OPENING OF DOORS.
2. FIELD VERIFY ACTUAL CONDITIONS AND DIMENSIONS TO  
EXISTING ELEMENTS. NOTIFY ARCHITECT OF  
DISCREPANCIES AND UNDOCUMENTED CONDITIONS THAT  
CONFLICT WITH NEW WORK.
3. PROVIDE C2D (INSULATED PARTITION) AT EXTERIOR WALLS  
WITHIN PROJECT LIMITS UNLESS NOTED OTHERWISE.  
PROVIDE SS-1 SOLID SURFACE WINDOW SILL AT WINDOWS.  
SEE 14#604 FOR TYPICAL EXTERIOR WALL SECTION.

## SHEET KEYNOTES

101	REMOVE EXISTING CASEWORK/METAL LOCKERS	
102	REMOVE EXISTING PLUMBING FIXTURE	
103	REMOVE EXISTING WINDOW	
104	CONSTRUCT NEW WALLWORK TO REMAIN AT START OF PROJECT TO SERVE AS CONSTRUCTION BOUNDARY	
105	HARD TEMPORARY CONSTRUCTION BARRIER FOR LONG DURATION AREA OF WORK - ASS. WITH 45 MINUTE FIRE RATED, SELF-CLOSING DOOR	
106	SOFT TEMPORARY CONSTRUCTION BARRIER FOR SHORT DURATION AREA OF WORK PLASTIC PARTITION WITH ZIPPER DOOR	D
107	INFECTION CONTROL VESTIBULE WITH STICKY WALK-OFF MATS	
108	MAINTAIN CLEAR EMERGENCY EGRESS PATH THROUGH CONSTRUCTION AREA	

[illegible]

## CONSULTANTS:

ARCHITECT-OF-RECORD THOMAS H. GYLLSTROM	FL. REG. AR0009096
--	-----------------------

## ARCHITECT/ENGINEERS:

**AKEA** Design, Inc.  
3603 NW 98th Street, Suite B  
Gainesville, FL 32606  
Phone: (352) 474-6124  
Fax: (352) 474-6324  
COA: FL #29578  
AKEA Project No. 110-15

Drawing Title
ARCHITECTURAL DEMOLITION AND NEW PLANS - PHASE 2
Approved: Project Director

Project Title	
<b>RENOVATE 3AB FOR GASTROENTEROLOGY AND PULMONARY</b>	
Location	
<b>GAINESVILLE, FLORIDA</b>	
Date	Checked
<b>JULY 15, 2016</b>	

Project Number  
573-15-102

Building Number  
1

Drawing Number  
**A202**  
4 OF 72

Office of  
Construction  
and Facilities  
Management

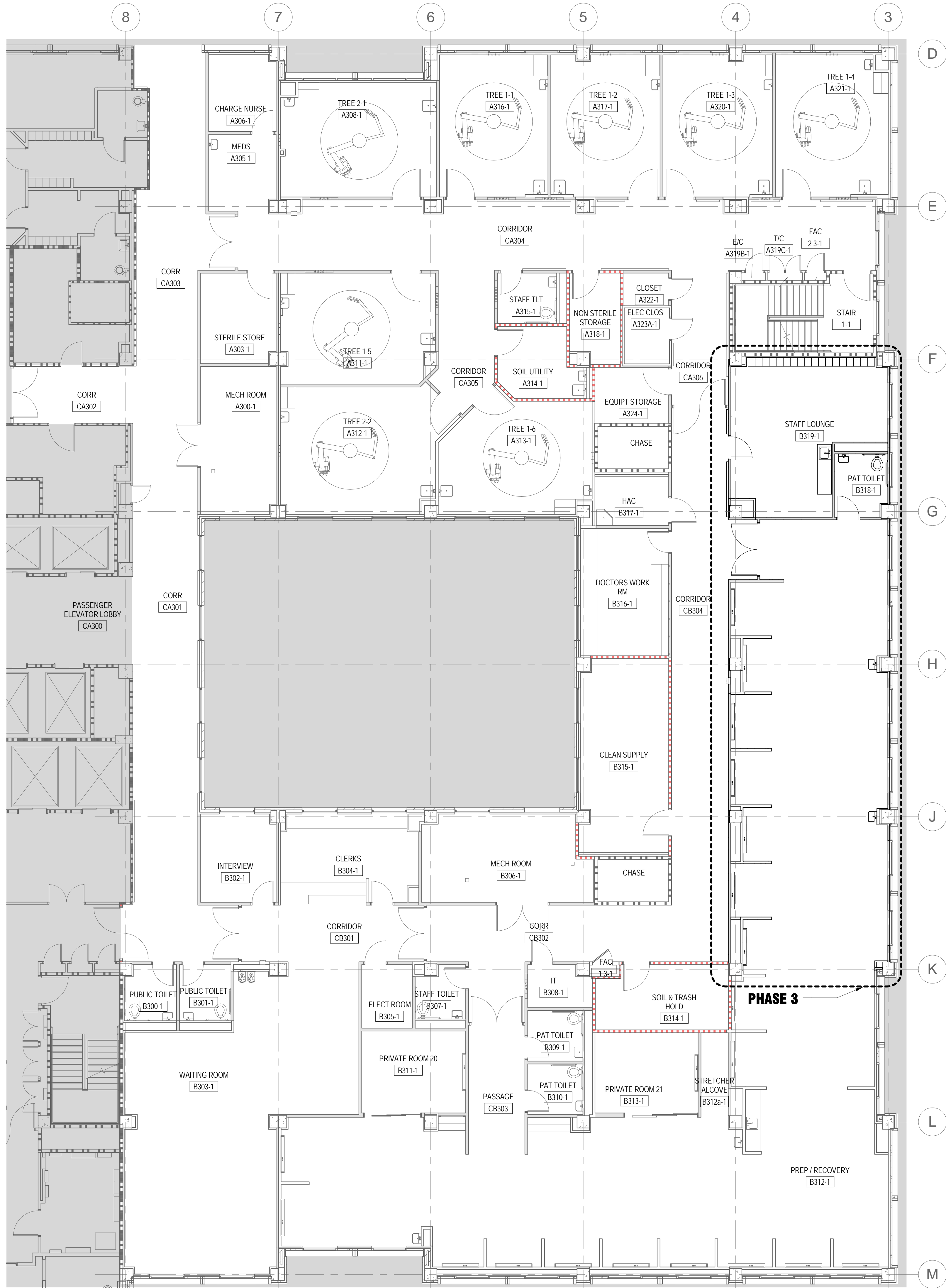
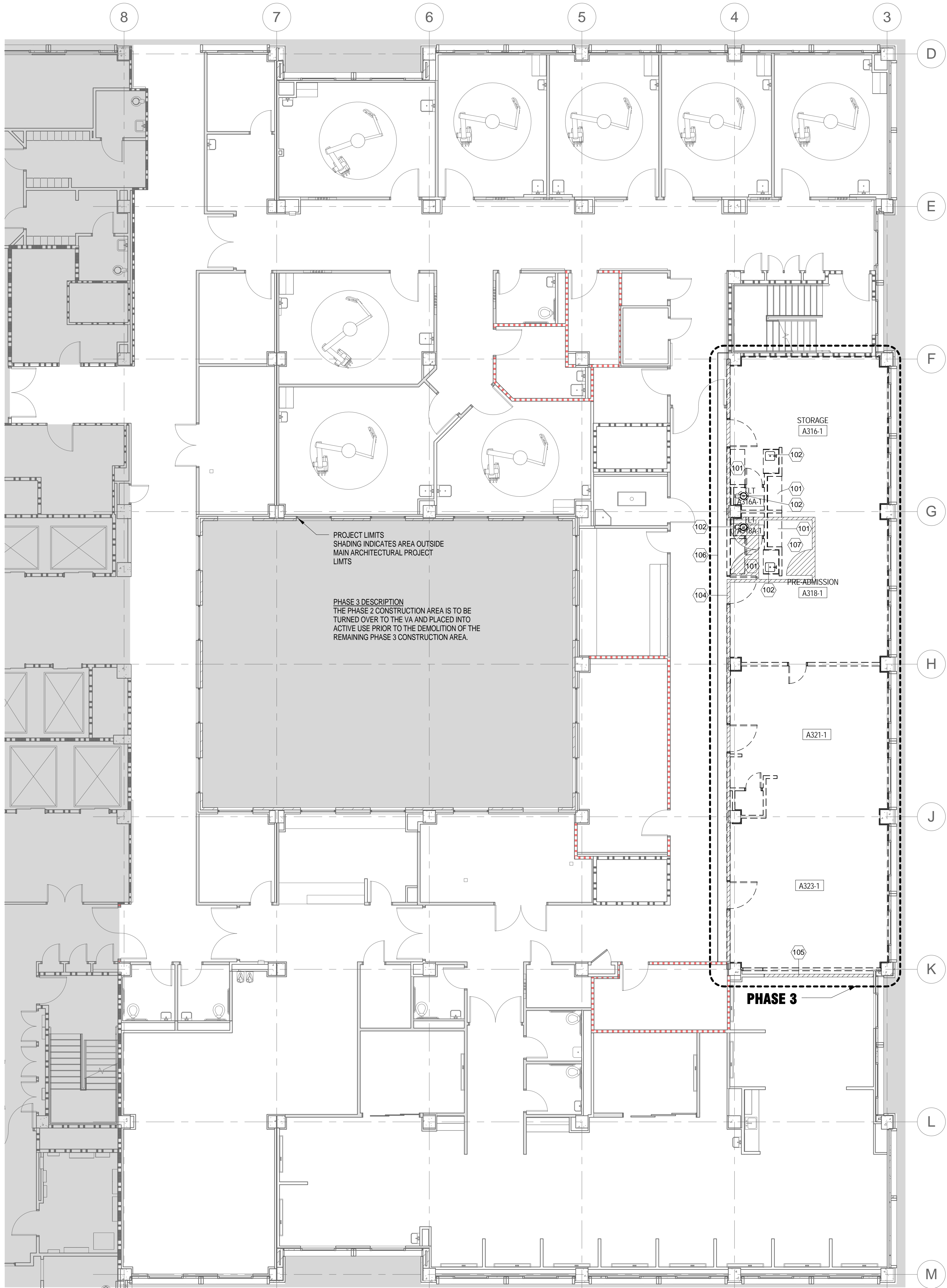


FINAL DESIGN  
APPROVED FOR CONSTRUCTION

## FINAL DESIGN



three inches = one foot  
one and one half inches = one foot  
one inch = one foot  
one half inch = one foot  
three quarters inch = one foot  
one quarter inch = one foot  
three eighths inch = one foot  
one eighth inch = one foot  
one eighth inch = one foot



## DEMO PLAN NOTES

1. SCREENED LINES AND PATTERNS INDICATE EXISTING ELEMENTS TO REMAIN. HEAVY DASHED LINES INDICATE EXISTING ELEMENTS TO BE REMOVED.
2. MAINTAIN CONSTRUCTION AREA UNDER NEGATIVE PRESSURE RELATIVE TO ADJACENT OCCUPIED AREAS. SEE SPECIFICATIONS FOR ADDITIONAL INFECTION CONTROL REQUIREMENTS.
3. KEYNOTES ARE PROVIDED TO ASSIST WITH IDENTIFYING SOME SPECIFIC ELEMENTS THAT ARE TO BE DEMOLISHED AND ARE BASED ON EXISTING DRAWINGS. ALL ELEMENTS TO BE DEMOLISHED MAY NOT BE INDICATED. REFER TO MEP DRAWINGS FOR ADDITIONAL DEMOLITION REQUIREMENTS. FIELD VISIT THE PROJECT AREA AND IDENTIFY THE DEMOLITION EXTENTS REQUIRED. THE PROJECT INTENT IS TO REMOVE EVERYTHING BACK TO BUILDING STRUCTURE AND EXTERIOR WALLS, EXCEPT FOR A FEW SELECT WALLS, WITHIN THE PROJECT LIMITS.
4. REMOVE EXISTING WALL BASE, CORNER GUARDS AND WALL PROTECTION WITHIN THE PROJECT LIMITS. PATCH EXISTING PARTITIONS TO REMAIN THAT ARE DAMAGED BY THE REMOVAL OF THESE ITEMS.
5. REMOVE EXISTING FLOOR FINISHES WITHIN THE PROJECT LIMITS. FILL DEPRESSIONS AND RECESSED SLAB AREAS. LEVEL FLOORS IN PREPARATION FOR NEW FINISH.
6. REMOVE EXISTING CEILING AND SOFFITS WITHIN THE PROJECT LIMITS. EXISTING CEILINGS INCLUDE RADIANT CEILING PANEL SYSTEMS (SEE MECHANICAL DEMOLITION DRAWINGS).
7. REMOVE EXISTING GYPSUM BOARD, METAL FRAMING, AND INSULATION AT EXTERIOR WALLS WITHIN THE PROJECT LIMITS.
8. REMOVE EXISTING METAL WINDOW SILLS AT EXTERIOR WINDOWS WITHIN THE PROJECT LIMITS.
9. REMOVE EXISTING DEVICES AS SHOWN ON MEP DRAWINGS. REPAIR AND FINISH WALLS WHERE DEVICES ARE REMOVED.
10. REPLACE, REPAIR, AND EXTEND EXISTING ELEMENTS (INCLUDING WALLS AND WALL FINISHES, FLOORS AND FLOOR FINISHES, AND CEILING FINISHES) IN AREAS OF WORK TO PROVIDE INCONSPICUOUS TRANSITION BETWEEN EXISTING AND NEW ELEMENTS.
11. VERIFY INTEGRITY OF EXISTING FIRE RATED CONSTRUCTION. PATCH AND REPAIR WHERE THE EXISTING RATED CONSTRUCTION HAS BEEN COMPROMISED THROUGH THIS OR PREVIOUS RENOVATIONS TO PROVIDE RATING INDICATED.
12. BEFORE DEMOLITION, ERECT 1-HR FIRE RATED BARRIERS BETWEEN EXISTING SPACE AND CONSTRUCTION AREA.

## FLOOR PLAN NOTES

1. DIMENSIONS ARE TO: THE FACE OF FINISH OF PARTITIONS, EXISTING ELEMENTS, EQUIPMENT, MASONRY, OR CONCRETE; STRUCTURAL GRIDS, AND CLEAR JAMB OPENING OF DOORS.
2. FIELD VERIFY ACTUAL CONDITIONS AND DIMENSIONS TO EXISTING ELEMENTS. NOTIFY ARCHITECT OF DISCREPANCIES AND UNDOCUMENTED CONDITIONS THAT CONFLICT WITH NEW WORK.
3. PROVIDE C20 (INSULATED PARTITION) AT EXTERIOR WALLS WITHIN PROJECT LIMITS UNLESS NOTED OTHERWISE. PROVIDE SS-1 SOLID SURFACE WINDOW SILL AT WINDOWS. SEE 14/A604 FOR TYPICAL EXTERIOR WALL SECTION.

## SHEET KEYNOTES

- |     |   |
|-----|---|
| 101 | REMOVE EXISTING CASEWORK/METAL LOCKERS  |
| 102 | REMOVE EXISTING PLUMBING FIXTURE  |
| 104 | CONSTRUCT NEW WALL/DOOR TO REMAIN AT START OF PROJECT TO SERVE AS CONSTRUCTION BOUNDARY                               |
| 105 | HARD TEMPORARY CONSTRUCTION BARRIER FOR LONG DURATION AREA OF WORK - A3F WITH 45 MINUTE FIRE RATED, SELF-CLOSING DOOR |
| 106 | SOFT TEMPORARY CONSTRUCTION BARRIER FOR SHORT DURATION AREA OF WORK - PLASTIC PARTITION WITH ZIPPER DOOR              |
| 107 | INFECTION CONTROL VESTIBULE WITH STICKY WALK-OFF MATS   |

FINAL DESIGN

APPROVED FOR CONSTRUCTION

CONSULTANTS:		ARCHITECT-OF-RECORD THOMAS H. GYLLSTROM FL. REG. NO. AR00009098	ARCHITECT/ENGINEERS: <b>AKEA</b> Design, Inc. 3603 NW 98th Street, Suite B Gainesville, FL 32606 Phone: (352) 474-6124 Fax: (352) 474-6324 COA: FL #29578 AKEA Project No. 110-15	Drawing Title <b>ARCHITECTURAL DEMOLITION AND NEW PLANS - PHASE 3</b>	Project Title <b>RENOVATE 3AB FOR GASTROENTEROLOGY AND PULMONARY</b>	Project Number 573-15-102 Building Number 1	Office of Construction and Facilities Management Department of Veterans Affairs
Revisions:				Approved: Project Director	Location <b>GAINESVILLE, FLORIDA</b>	Drawing Number <b>A203</b> 5 OF 72	
Date					Date JULY 15, 2016	Checked	Drawn



three inches = one foot

one and one half inches = one foot

one inch = one foot

three quarters inch = one foot

one half inch = one foot

three eighths inch = one foot

one quarter inch = one foot

one eighth inch = one foot



3rd Floor (129'-0")  
1  
1/8" = 1'-0"

### CEILING PLAN NOTES

1. CEILING MOUNTED DEVICES (LIGHT FIXTURES, DIFFUSERS, SPRINKLER HEADS, ETC.) TO BE CENTERED IN CEILING TILES UNLESS NOTED OTHERWISE.

### SHEET KEYNOTES

### CEILING PLAN SYMBOLS

- |               |   |
|---------------|---|
| APC#<br>8'-0" | CEILING TAG<br>(CEILING MATERIAL CODE OVER<br>CEILING HEIGHT) |
| GWB<br>8'-0"  | 2x2' RECESSED<br>LIGHT FIXTURE                                |
|               | 2x4' RECESSED<br>LIGHT FIXTURE                                |
|               | RECESSED<br>DOWNLIGHT   |
|               | FIRE PROTECTION-<br>SPRINKLER HEAD                            |
|               | PENDANT / SUSPENDED<br>LIGHT FIXTURE                          |
|               | HVAC SUPPLY<br>GRILLE   |
|               | HVAC RETURN<br>GRILLE   |
|               | HVAC EXHAUST<br>GRILLE  |
|               | EXIT SIGN<br>SINGLE-SIDED                                     |
|               | EXIT SIGN<br>DOUBLE-SIDED                                     |
| CCT           | CUBICLE CURTAIN TRACK   |
| EJ3           | CEILING EXPANSION JOINT COVER                                 |

### CEILING MATERIAL KEY

- |      |  |
|------|--|
| GWB  | GWB<br>GYPSUM BOARD<br>CEILING OR SOFFIT |
| APC# | 2x2' ACOUSTIC PANEL CEILING              |

FINAL DESIGN  
APPROVED FOR CONSTRUCTION

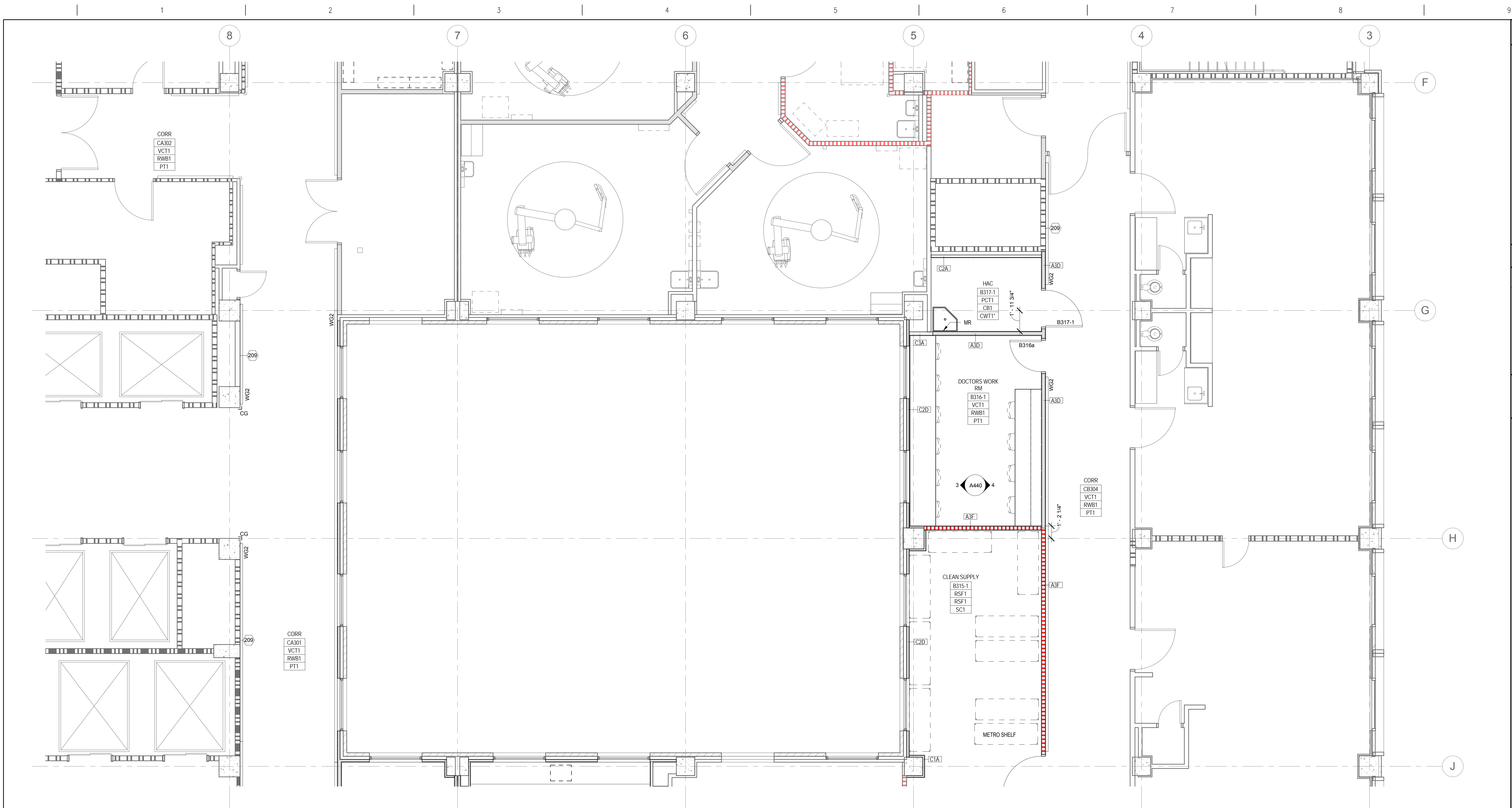
CONSULTANTS:	ARCHITECT-OF-RECORD THOMAS H. GYLLSTROM FL. REG. NO. AR0009998	ARCHITECT/ENGINEERS: <b>AKEA</b> Design, Inc. 3603 NW 98th Street, Suite B Gainesville, FL 32606 Phone: (352) 474-6124 Fax: (352) 474-6324 COA: FL #29578 AKEA Project No. 110-15	Drawing Title <b>REFLECTED CEILING PLAN</b>	Project Title <b>RENOVATE 3AB FOR GASTROENTEROLOGY AND PULMONARY</b>	Project Number 573-15-102	Office of Construction and Facilities Management 
			Approved: Project Director	Location <b>GAINESVILLE, FLORIDA</b>	Building Number 1	
REV 1 - ADDENDUM 1 Revisions:	7/29/2016 Date			Date <b>JULY 15, 2016</b>	Checked Drawn <b>A241</b> 6 OF 72	







three inches = one foot  
one and one half inches = one foot  
one inch = one foot  
one inch = one foot  
three quarters inch = one foot  
one half inch = one foot  
one half inch = one foot  
three eighths inch = one foot  
one quarter inch = one foot  
one eighth inch = one foot  
one eighth inch = one foot



1 Enlarged Floor Plan - Phase 2 North  
1/4" = 1'-0"

**ENLARGED PLAN NOTES**

1. DIMENSIONS ARE TO: FACE OF FINISH OF PARTITIONS, EQUIPMENT, OR EXISTING ELEMENTS. CLEAR JAMB OPENING OF DOORS, OR CENTERLINE OF STRUCTURAL GRIDS. DO NOT SCALE DRAWINGS.

2. TYPICAL PARTITION AT CORRIDORS IS A3D. TYPICAL PARTITION AT EXTERIOR WALLS IS C2D. TYPICAL PARTITION AT FURRED COLUMNS IS C1A.

3. PROVIDE TRANSITION AT FLOOR MATERIAL CHANGES. SEE A605 FOR TYPICAL TRANSITION DETAILS. LOCATE TRANSITION CENTERED UNDER DOOR IN CLOSED POSITION UNLESS NOTED OTHERWISE.

**SHEET KEYNOTES**

209 PATCH AND PREPARE EXISTING WALL SURFACE FOR NEW FINISH. FINISH AS INDICATED.

**ENLARGED PLAN SYMBOLS**

ONE HOUR FIRE RATED PARTITION  
ONE HOUR FIRE/SMOKE RATED PARTITION  
TWO HOUR FIRE RATED PARTITION  
TWO HOUR FIRE/SMOKE RATED PARTITION

PARTITION TYPE TAG SEE A-601

DOOR OPENING MARK  
DOOR OPENING

FEC FIRE EXTINGUISHER CABINET

ROOM NAME	ROOM NAME
101	ROOM NUMBER
????	FLOOR FINISH
????	BASE FINISH
????	WALL FINISH

FLOOR FINISH CODES  
PCT1 - PORCELAIN CERAMIC TILE TYPE 1  
VCT1 - VINYL COMPOSITION TILE TYPE 1  
RSF1 - RESILIENT SHEET FLOORING TYPE 1  
PT2 - PAINT TYPE 2 (FLOOR PAINT)

BASE FINISH CODES  
RSF1 - RESILIENT SHEET FLOORING INTEGRAL COVE  
RWB1 - RESILIENT WALL BASE TYPE 1  
CB1 - CERAMIC TILE BASE TYPE 1 (COVE BASE)

WALL FINISH CODES  
PT1 - PAINT TYPE 1  
SC1 - SPECIAL COATING TYPE 1  
CW11 - CERAMIC WALL TILE TYPE 1 WAINSCOT  
-AT TOILET ROOMS, WAINSCOT TO 4'-6" HIGH AND PT1 ON GYPSUM BOARD ABOVE  
-AT HAC, WAINSCOT TO 5'-6" HIGH AND SC1 ON GYPSUM BOARD ABOVE

EXPANSION CONTROL JOINT CODES  
EJ1 - FLOOR JOINT COVER  
EJ2 - GYPSUM BOARD WALL OR SOFFIT JOINT COVER  
EJ3 - ACOUSTIC PANEL CEILING JOINT COVER  
SEE DETAILS ON A605

WALL PROTECTION CODES  
EG - END WALL GUARD  
CG - CORNER GUARD  
WG2 - HANDRAIL AND WALL GUARD COMBINATION  
--- SHEET PROTECTION  
--- S11 SOLID SURFACE SHEET ON WALL  
SEE TYPICAL ELEVATION ON A440  
EXTEND CORNER TO CORNER ON WALL  
WHERE SHOWN (UNLESS DIMENSIONED OTHERWISE)

EQUIPMENT/ACCESSORY CODES  
AR - LEAD APRON RUCK  
GB36 - GRAB BAR, 36"  
GB42 - GRAB BAR, 42"  
GH - GARMENT HOOK  
M - MIRROR  
MC - MED CABINET  
MR - MOP RACK  
PTD - PAPER TOWEL DISPENSER  
SD - SOAP DISPENSER  
SH - SHOE  
SR - SHARPS  
TPD - TOILET PAPER DISPENSER

SEE EQUIPMENT/ACCESSORY MOUNTING  
ELEVATION ON A440, 09 06 00, AND 10 28 00.

FINAL DESIGN  
APPROVED FOR CONSTRUCTION

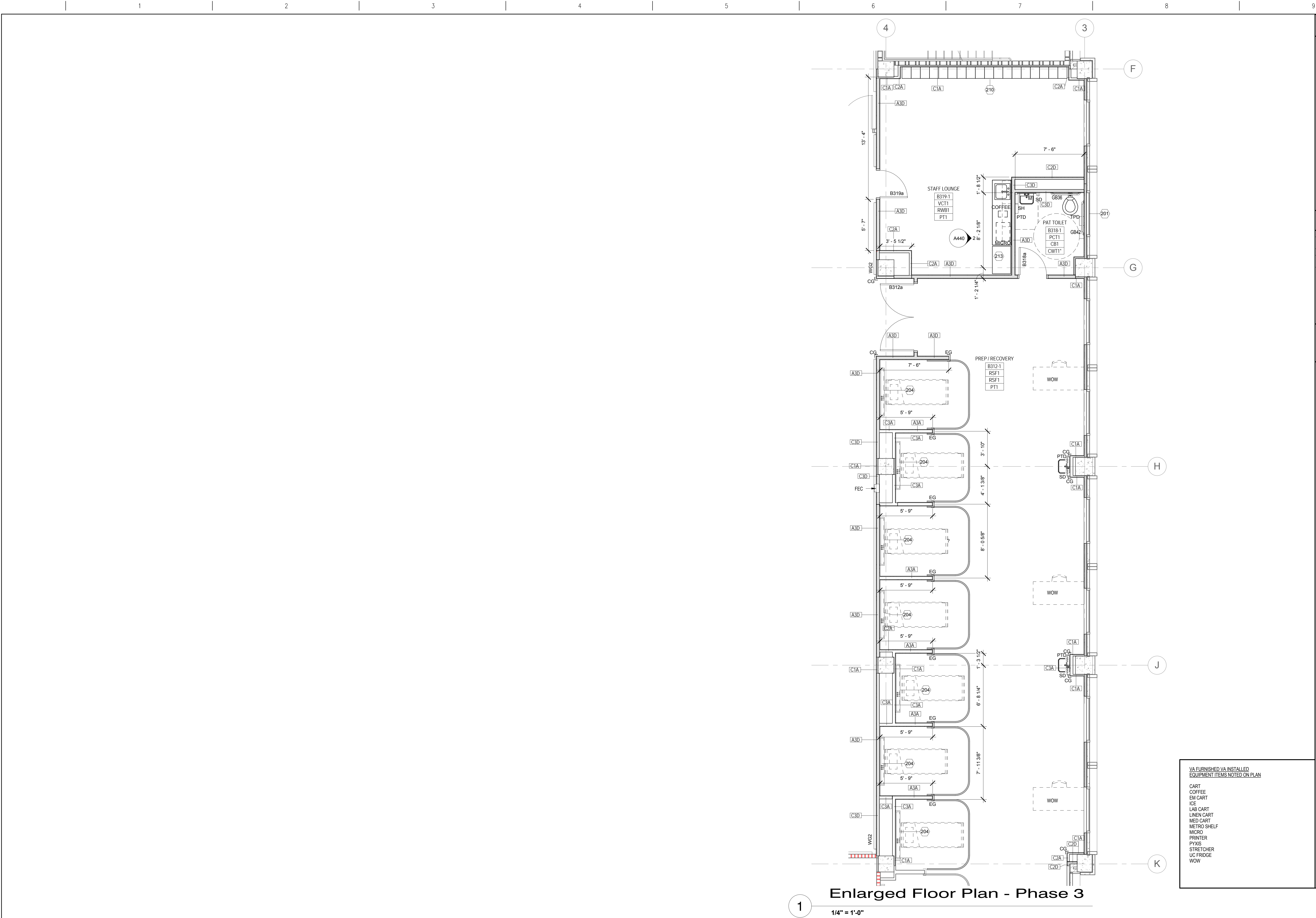
		CONSULTANTS:		ARCHITECT-OF-RECORD THOMAS H. GYLLSTROM		FL. REG. NO. AR0009098		ARCHITECT/ENGINEERS:		Drawing Title		Project Title		Project Number		Office of Construction and Facilities Management			
								<div><div>AKEA</div><div>Design, Inc.</div><div>3603 NW 98th Street, Suite B Gainesville, FL 32606 Phone: (352) 474-6124 Fax: (352) 474-6324 COA: FL #29578 AKEA Project No. 110-15</div></div>		ENLARGED PLAN - PHASE 2 NORTH		RENOVATE 3AB FOR GASTROENTEROLOGY AND PULMONARY		573-15-102					
												Approved: Project Director		Location GAINESVILLE, FLORIDA		Building Number 1			
												Date JULY 15, 2016		Checked		Drawn		Drawing Number A402A 8 OF 72	
Revisions:		Date																<div><div></div><div>Department of Veterans Affairs</div></div>	







three inches = one foot  
one and one half inches = one foot  
one inch = one foot  
three quarters inch = one foot  
one half inch = one foot  
three eighths inch = one foot  
one quarter inch = one foot  
one eighth inch = one foot



**ENLARGED PLAN NOTES**

1. DIMENSIONS ARE TO: FACE OF FINISH OF PARTITIONS, EQUIPMENT, OR EXISTING ELEMENTS; CLEAR JAMB OPENING OF DOORS; OR CENTERLINE OF STRUCTURAL GRIDS. DO NOT SCALE DRAWINGS.

2. TYPICAL PARTITION AT CORRIDORS IS A3D. TYPICAL PARTITION AT EXTERIOR WALLS IS C2D. TYPICAL PARTITION AT FURRED COLUMN IS C1A.

3. PROVIDE TRANSITION AT FLOOR MATERIAL CHANGES. SEE A408 FOR TYPICAL TRANSITION DETAILS. LOCATE TRANSITION CENTERED UNDER DOOR IN CLOSED POSITION UNLESS NOTED OTHERWISE.

**SHEET KEYNOTES**

201	PROVIDE GLAZING SURFACE FILM
204	PATIENT BED SERVICE WALL AND BED LOCATOR. SEE ELEVATION ON A440.
210	METAL LOCKERS
213	PROVIDE REFRIGERATOR WITH ICE MAKER (GE PZS22MMKES).

**ENLARGED PLAN SYMBOLS**

ONE HOUR FIRE RATED PARTITION

ONE HOUR FIRE/SMOKE RATED PARTITION

TWO HOUR FIRE RATED PARTITION

TWO HOUR FIRE/SMOKE RATED PARTITION

PARTITION TYPE TAG SEE A-601

DOOR OPENING MARK  
DOOR OPENING

FIRE EXTINGUISHER  
CABINET

ROOM NAME  
ROOM NUMBER  
FLOOR FINISH  
BASE FINISH  
WALL FINISH

FLOOR FINISH CODES  
PCT1 - PORCELAIN CERAMIC TILE TYPE 1  
VCT1 - VINYL COMPOSITION TILE TYPE 1  
RSF1 - RESILIENT SHEET FLOORING TYPE 1  
PT2 - PAINT TYPE 2 (FLOOR PAINT)

BASE FINISH CODES  
RSF1 - RESILIENT SHEET FLOORING INTEGRAL COVE  
RWB1 - RESILIENT WALL BASE TYPE 1  
CB1 - CERAMIC TILE BASE TYPE 1 (COVE BASE)

WALL FINISH CODES  
PT1 - PAINT TYPE 1  
SC1 - SPECIAL COATING TYPE 1  
CWT1 - CERAMIC WALL TILE TYPE 1 WAINSCOT  
-AT TOILET ROOMS, WAINSCOT TO 4'-6" HIGH AND PT1 ON GYPSUM BOARD ABOVE  
-AT HAC, WAINSCOT TO 5'-6" HIGH AND SC1 ON GYPSUM BOARD ABOVE

EXPANSION CONTROL JOINT CODES  
EJ1 - FLOOR JOINT COVER  
EJ2 - GYPSUM BOARD WALL OR SOFFIT JOINT COVER  
EJ3 - ACOUSTIC PANEL CEILING JOINT COVER  
SEE DETAILS ON A605

WALL PROTECTION CODES  
EG - END WALL GUARD  
CG - CORNER GUARD  
WG2 - HANDRAIL AND WALL GUARD COMBINATION  
SHEET PROTECTION  
SS1 - SOLID SURFACE SHEET ON WALL  
SEE TYPICAL ELEVATION ON A440  
EXTEND CORNER TO CORNER ON WALL WHERE SHOWN (UNLESS DIMENSIONED OTHERWISE)

EQUIPMENT/ACCESSORY CODES  
AR - LEAD APRON RACK  
GB36 - GRAB BAR, 36"  
GB42 - GRAB BAR, 42"  
GH - GARMENT HOOK  
M - MIRROR  
MC - MED CABINET  
MR - MOP RACK  
PTD - PAPER TOWEL DISPENSER  
SD - SOAP DISPENSER  
SH - SHELF  
SR - SHARPS  
TPD - TOILET PAPER DISPENSER  
SEE EQUIPMENT/ACCESSORY MOUNTING ELEVATION ON A440, 09 06 00, AND 10 28 00.

VA FURNISHED VA INSTALLED  
EQUIPMENT ITEMS NOTED ON PLAN

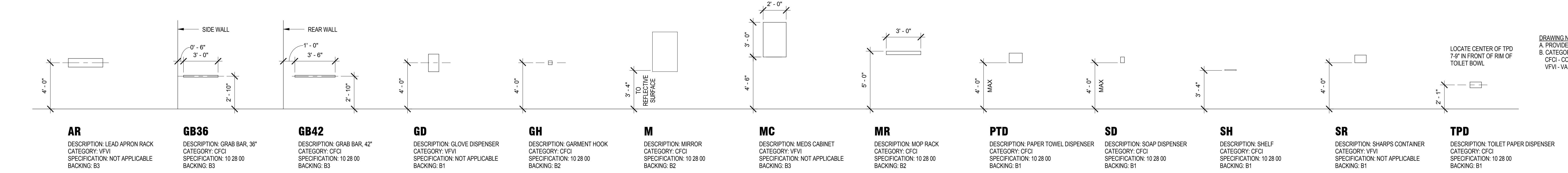
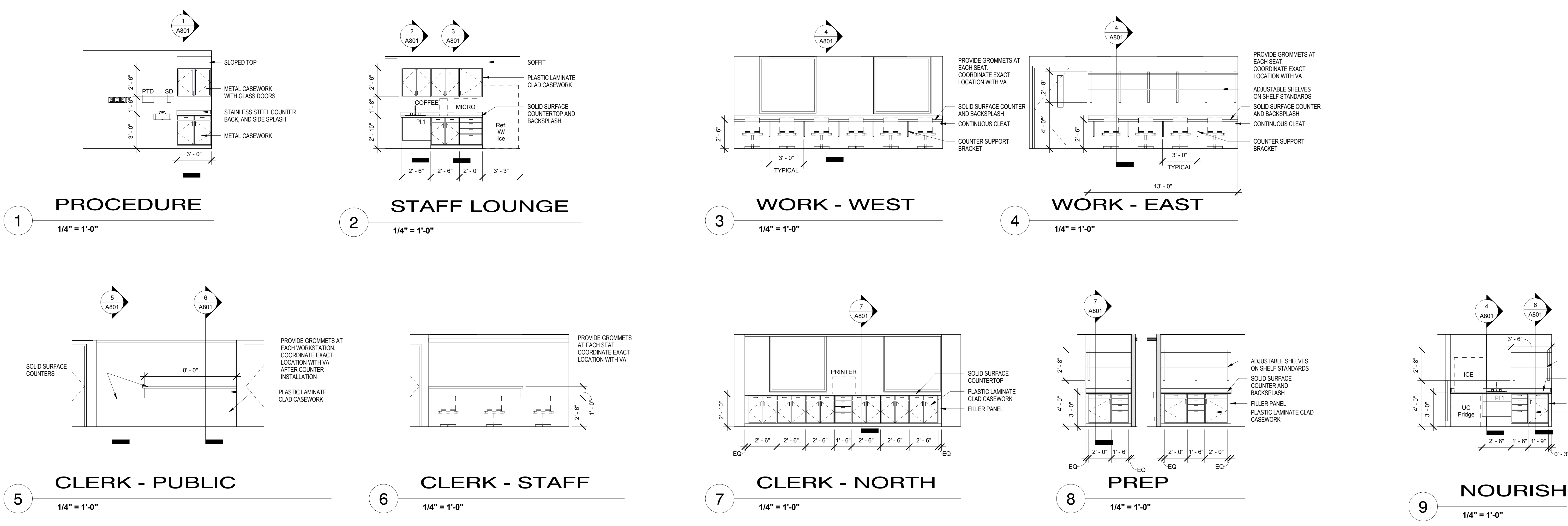
CART  
COFFEE  
EM CART  
ICE  
LAB CART  
LINEN CART  
METRO SHELF  
MICRO  
PRINTER  
PYXIS  
STRETCHER  
UC FRIDGE  
WOW

CONSULTANTS:		ARCHITECT-OF-RECORD THOMAS H. GYLLSTROM	FL. REG. NO. AR00009098	ARCHITECT/ENGINEERS: <b>AKEA</b> Design, Inc. 3603 NW 98th Street, Suite B Gainesville, FL 32606 Phone: (352) 474-6124 Fax: (352) 474-6324 COA: FL #29578 AKEA Project No. 110-15	Drawing Title <b>ENLARGED PLAN - PHASE 3</b>	Project Title <b>RENOVATE 3AB FOR GASTROENTEROLOGY AND PULMONARY</b>	Project Number <b>573-15-102</b>	Office of Construction and Facilities Management  Department of Veterans Affairs		
				Approved: Project Director	Location <b>GAINESSVILLE, FLORIDA</b>	Date <b>JULY 15, 2016</b>	Checked		Drawn	Building Number <b>1</b>
Revisions:		Date								Drawing Number <b>A403</b> 10 OF 72

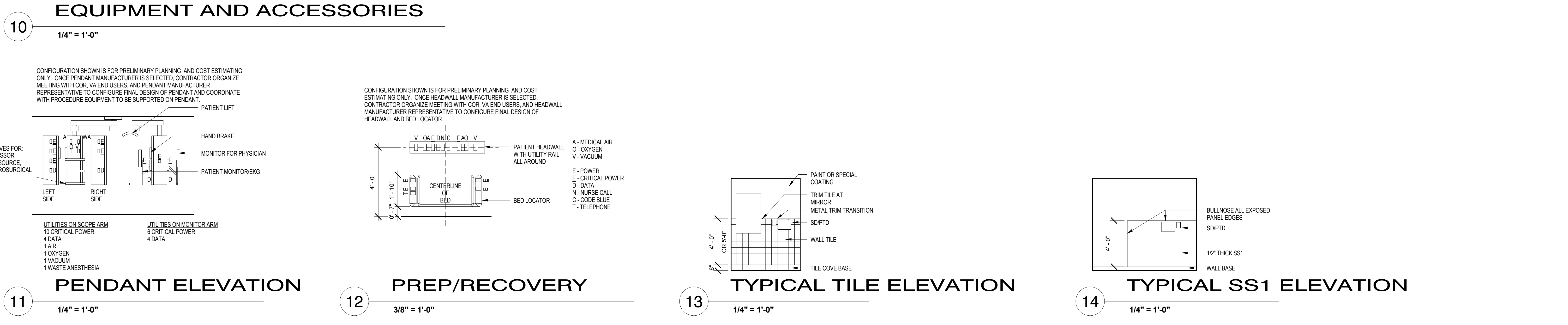


three inches = one foot  
one and one half inches = one foot  
one inch = one foot  
three quarters inch = one foot  
one half inch = one foot  
three eighths inch = one foot  
one quarter inch = one foot  
one eighth inch = one foot

A  
B  
C  
D  
E  
F



**DRAWING NOTES**  
A. PROVIDE IN WALL BACKING INDICATED. SEE A604 FOR BACKING DETAILS.  
B. CATEGORY DEFINITIONS:  
CFCI - CONTRACTOR FURNISHED CONTRACTOR INSTALLED ITEM  
VFVI - VA FURNISHED VA INSTALLED ITEM (BACKING BY CONTRACTOR)

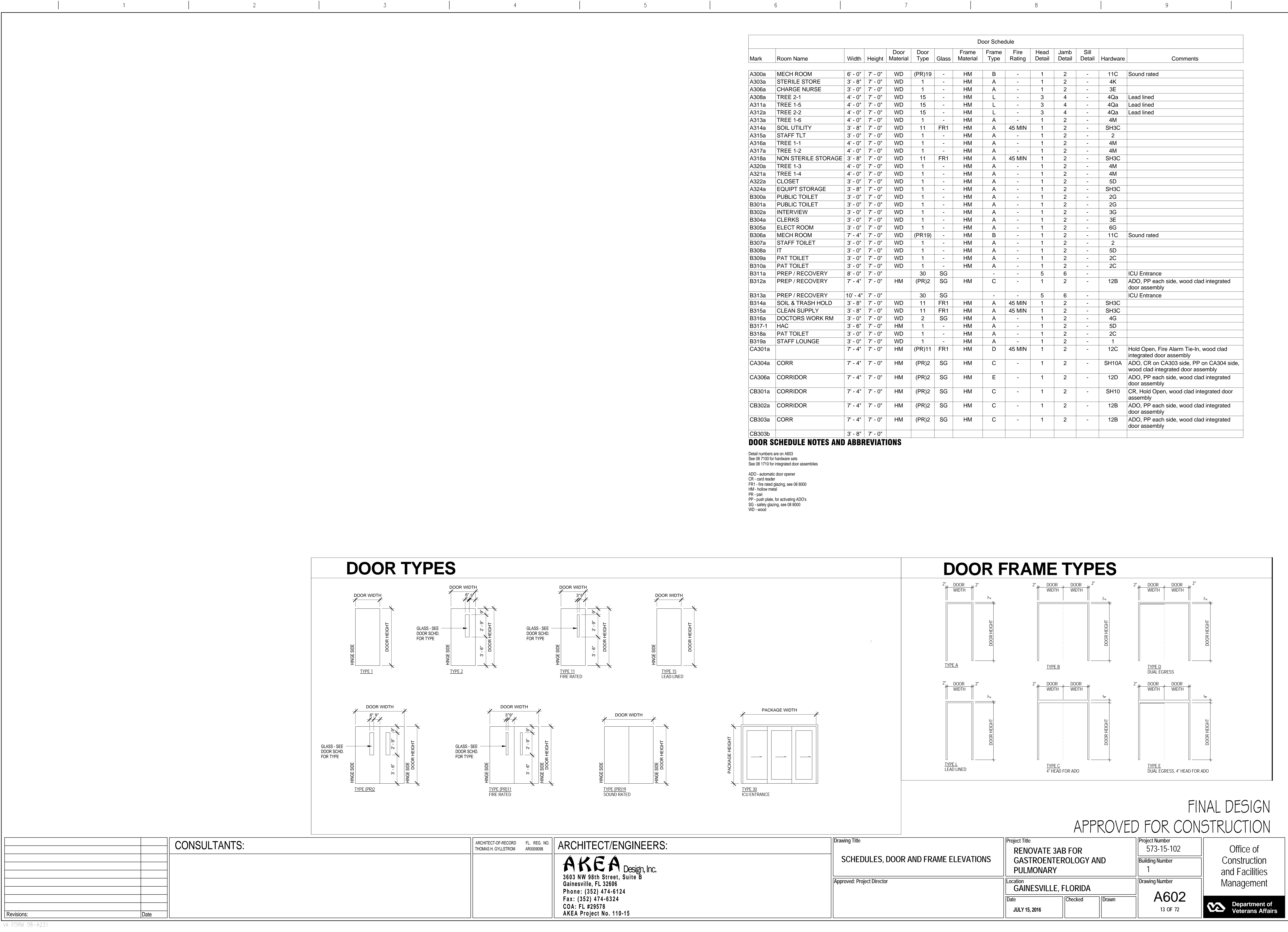


<div>Revisions:</div> <div>Date</div>		<b>CONSULTANTS:</b>		ARCHITECT-OF-RECORD THOMAS H. GYLLSTROM	FL REG. NO. AR0009998	<b>ARCHITECT/ENGINEERS:</b> <b>AKEA</b> Design, Inc. 3603 NW 98th Street, Suite B Gainesville, FL 32606 Phone: (352) 474-6124 Fax: (352) 474-6324 COA: FL #29578 AKEA Project No. 110-15		Drawing Title <b>INTERIOR ELEVATIONS</b>	Project Title <b>RENOVATE 3AB FOR GASTROENTEROLOGY AND PULMONARY</b>	Project Number 573-15-102 Building Number 1	Office of Construction and Facilities Management 
								Approved: Project Director	Location <b>GAINESVILLE, FLORIDA</b>	Drawing Number <b>A440</b> 11 OF 72	



VA FORM 08-6231

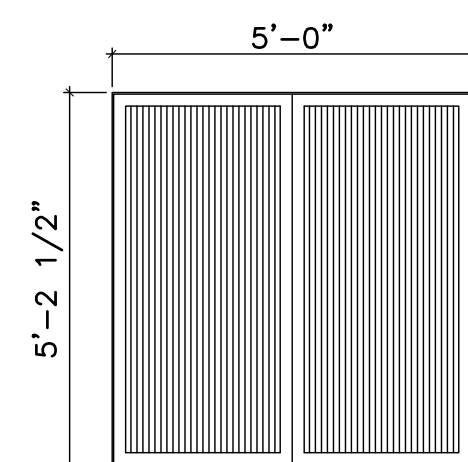




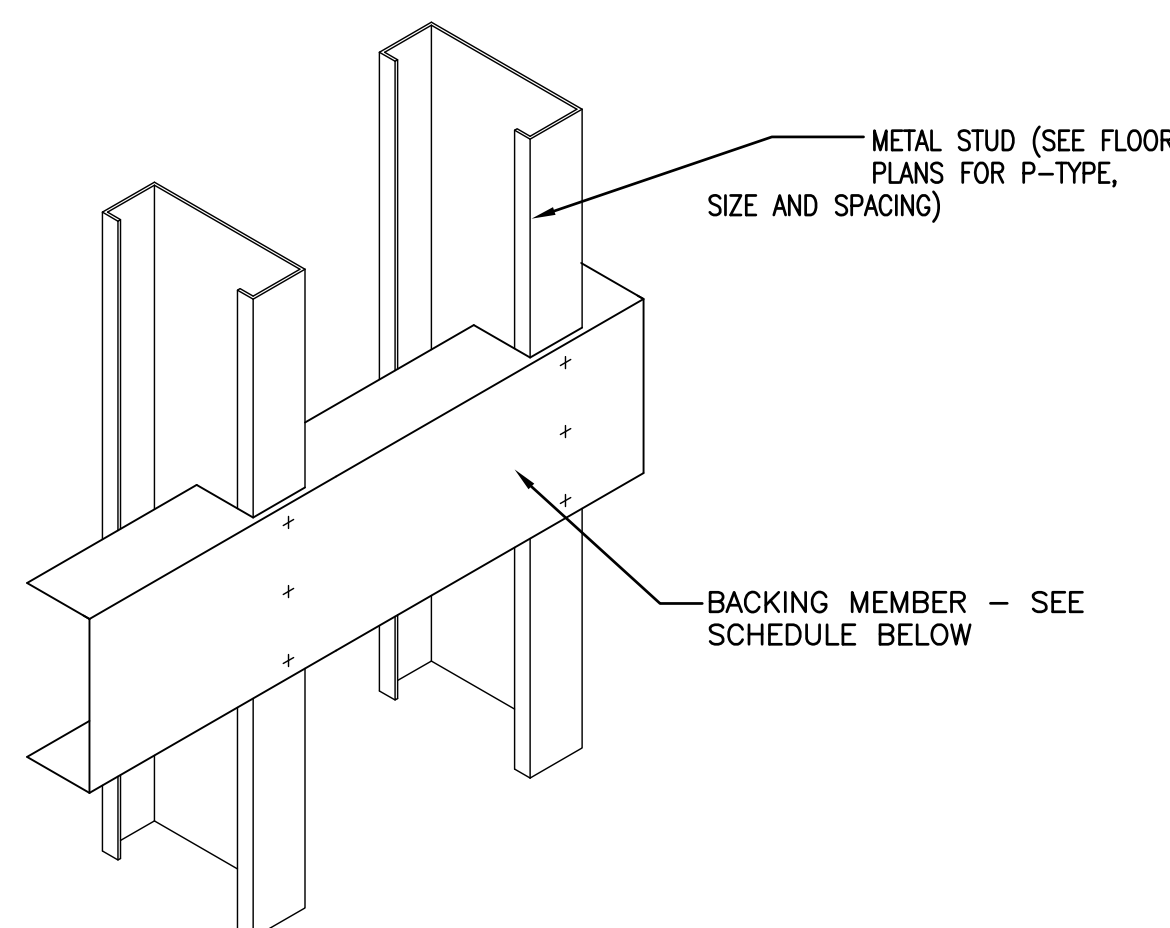




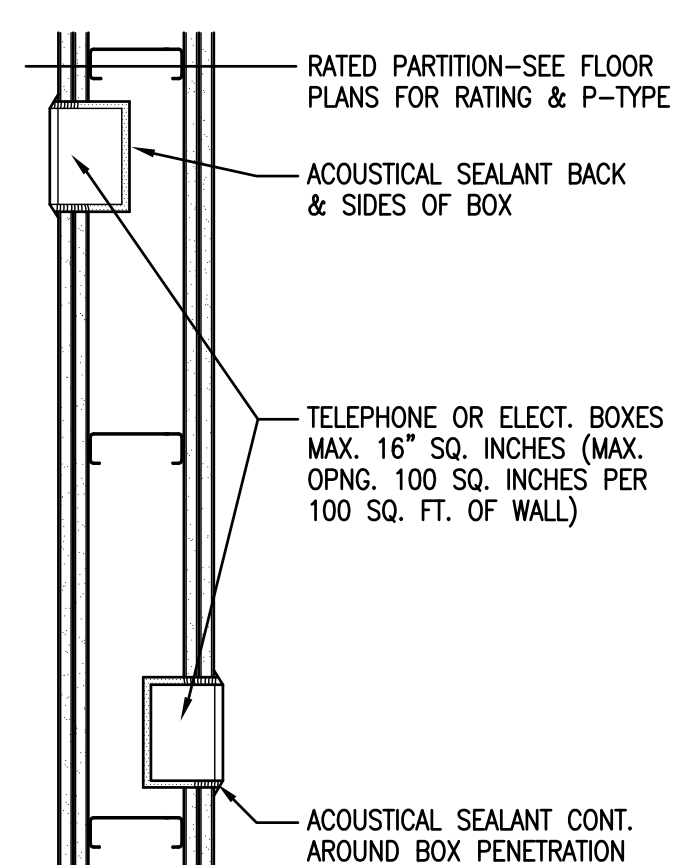




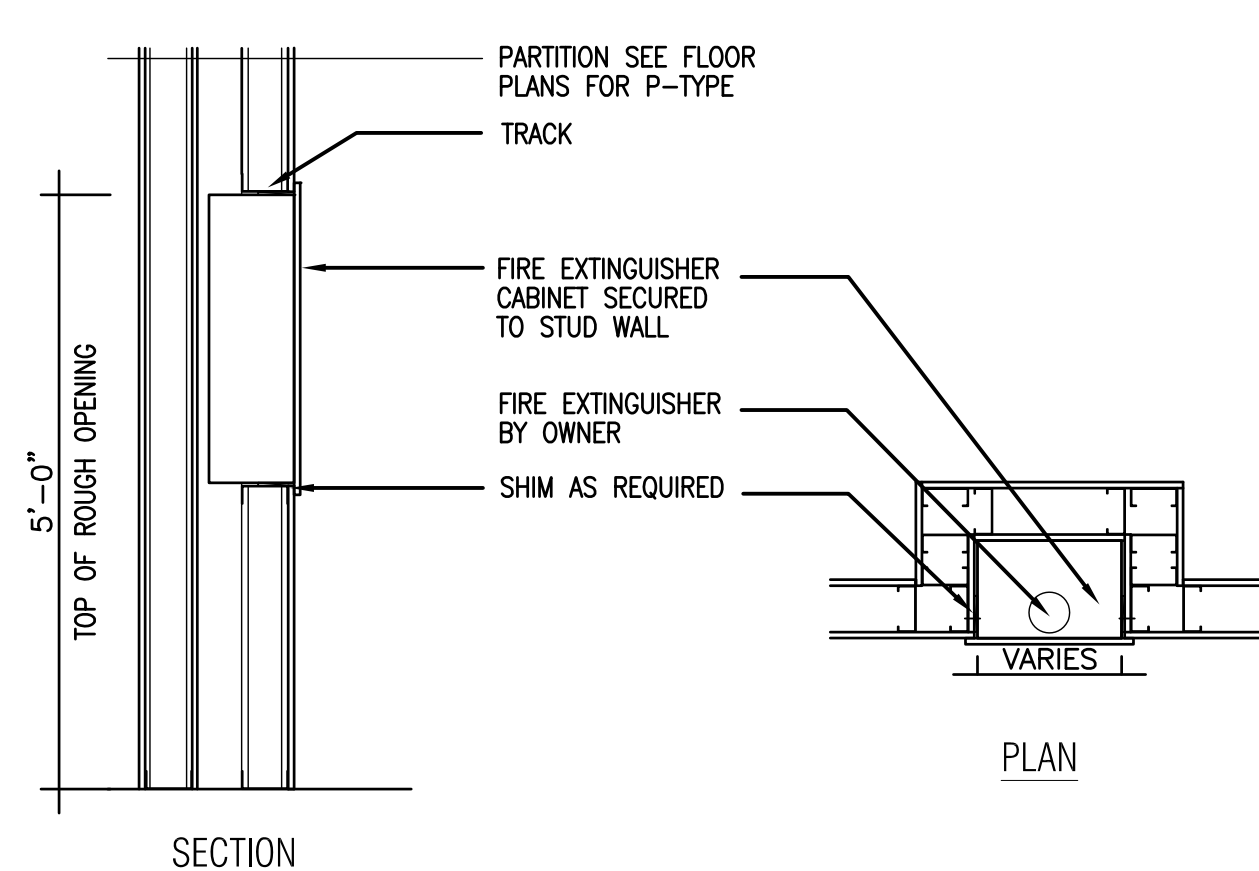
2 RATED AND/OR SOUND INSULATED PARTITION  
1 1/2" = 1'-0"



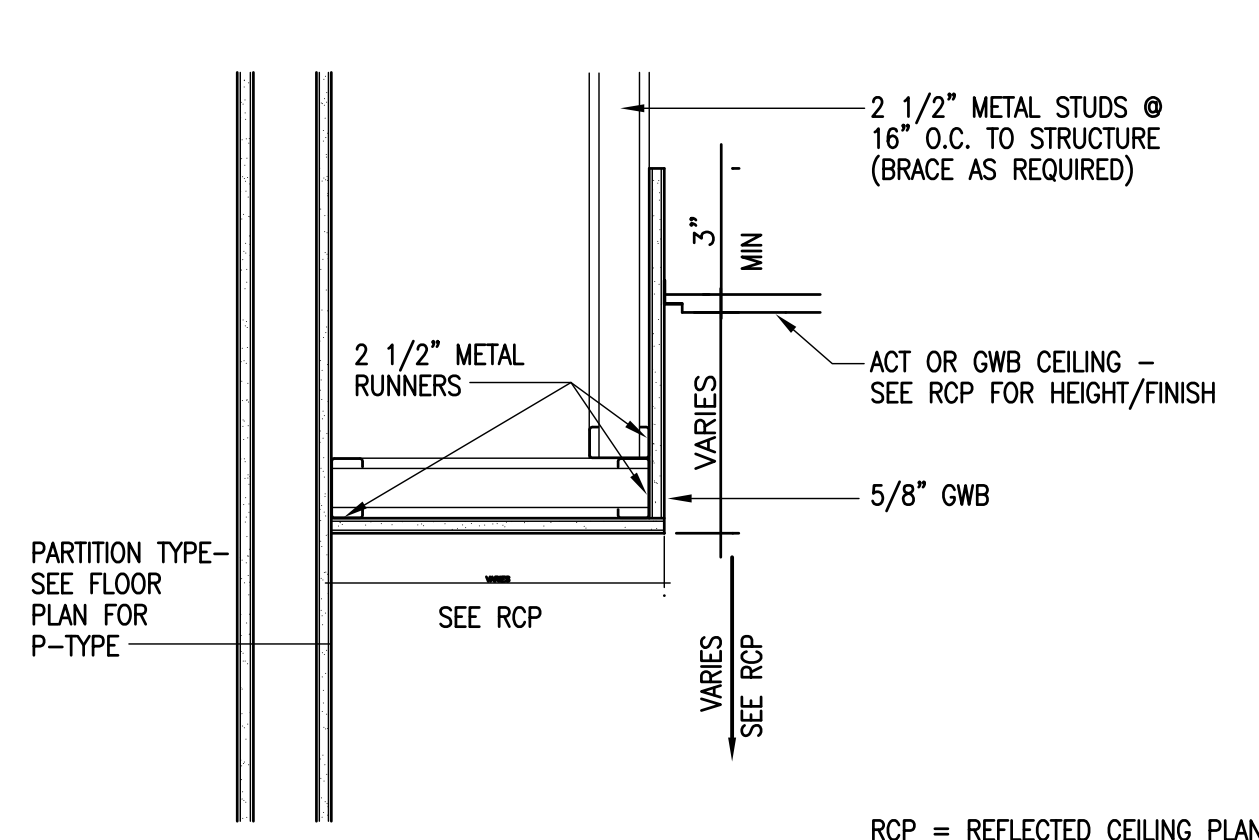
#### 4 CONTROL JOINT AT DOORS



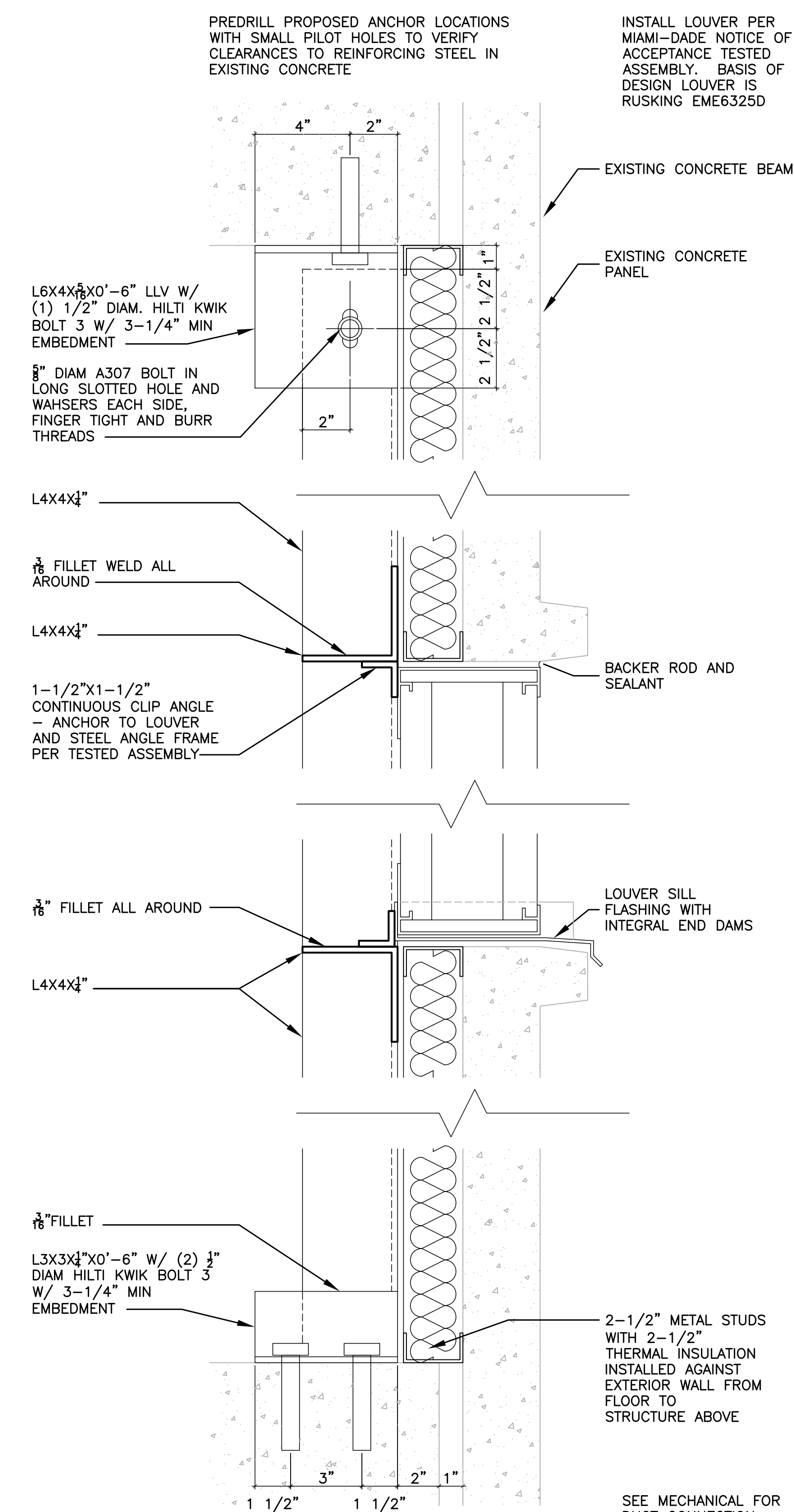
7 ADJ. ELEC. BOXES / RATED WALL  $1\frac{1}{2}" = 1'-0"$



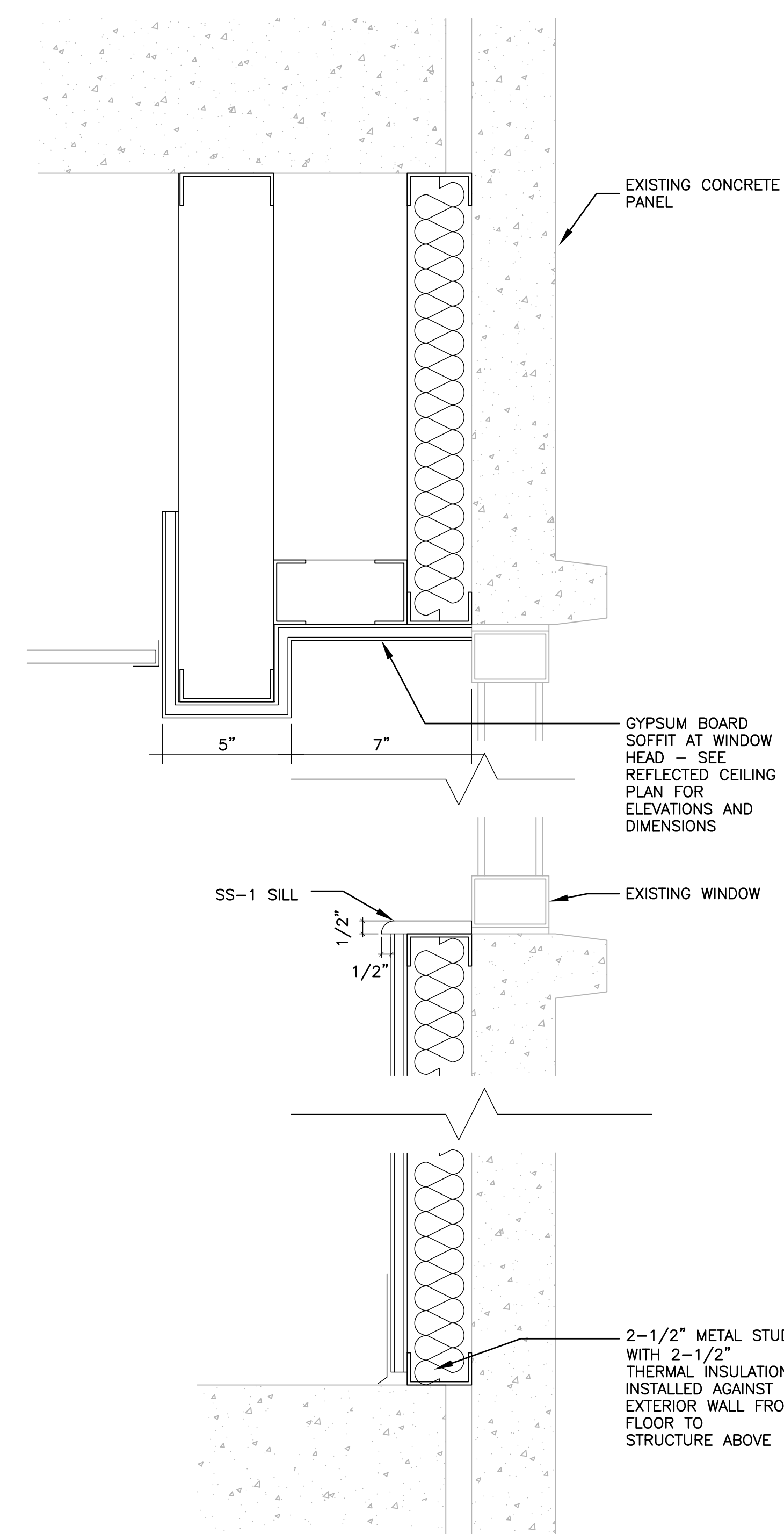
9 FIRE EXTINGUISHER CABINET  
3/4" = 1'-0"



10 TYPICAL GWB SOFFIT AT WALL  
1 1/2" = 1'-0"



13 LOUVER DETAIL



14 TYPICAL EXTERIOR WALL SECTION

FINAL DESIGN  
APPROVED FOR CONSTRUCTION

VA FORM 08-6231