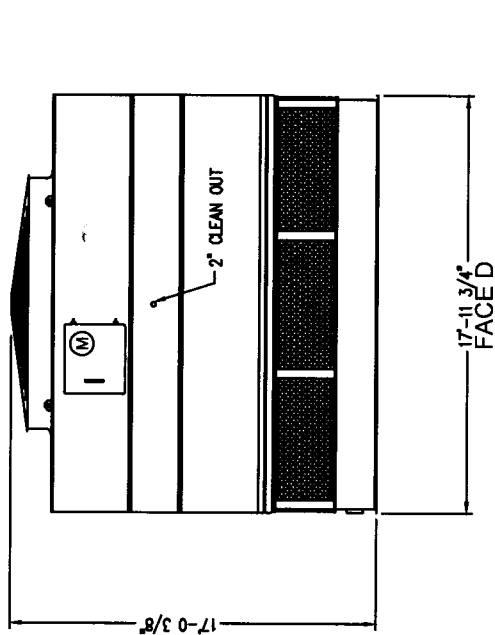
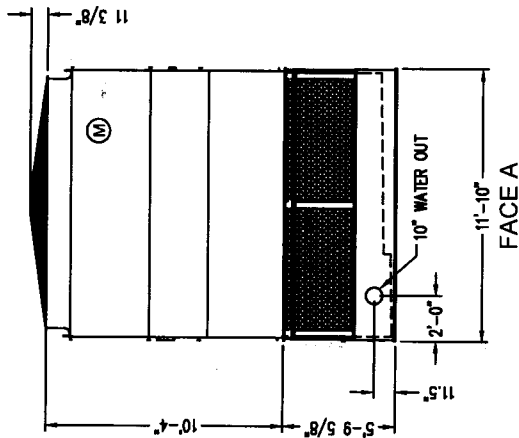


#### Notes

- 1) Drawings are not to scale. All dimensions are in feet and inches.
- 2) Platform(s) and access ladder(s) ship pre-assembled and separate for field installation (by others). A crane will be required to set the platform module(s).
- 3) Maximum platform module weight is 300 lbs.
- 4) Field piping must clear access ladder and platform structure and be supported independently of unit.
- 5) Refer to OSHA and local occupational safety regulations to determine if safety cage(s) are required.

ORDER NO: <b>Q16039354302</b>	 <b>BALTIMORE AIRCOIL COMPANY</b>	<b>PT2 Single Cell Unit Access Internal Belt Drive</b> <small>DRAWING NUMBER:</small> <b>EA-Q16039354302</b>
DATE: <b>4/8/2016 1:15:34 PM</b>		



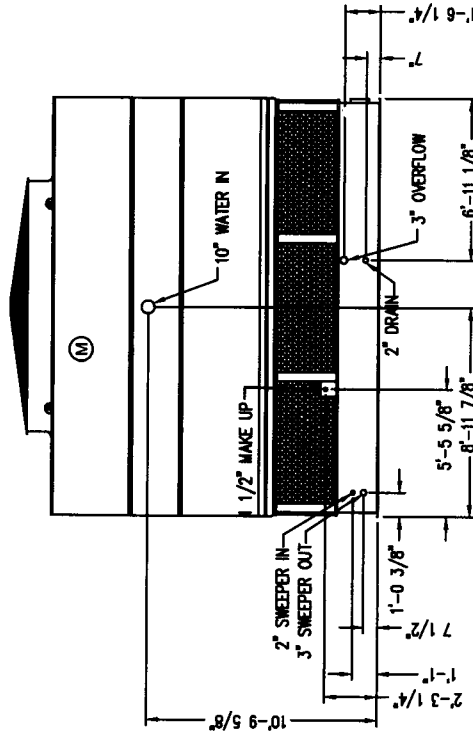
#### Notes

- 1) Drawings are not to scale. All dimensions are in feet and inches. Weights are in pounds and include options and accessories.
- 2) Unless otherwise indicated, connections 3" and smaller are NPT. Connections 4" and larger are grooved to suit a mechanical coupling and beveled for welding.
- 3) For weight loadings and support requirements, refer to the suggested steel support drawing.
- 4) The area above the fan discharge must be unobstructed.
- 5) Piping must not be supported by the tower inlet or outlet connections.
- 6) M = Motor location.
- 7) Field piping should be fabricated at time of installation. Pre-fabrication of pipe work is not recommended.

#### Right Hand Unit

Model Number	Shipping Weight	Operating Weight	Heaviest Section
PT2-1218A-301	11747	21137	7750

FACE C



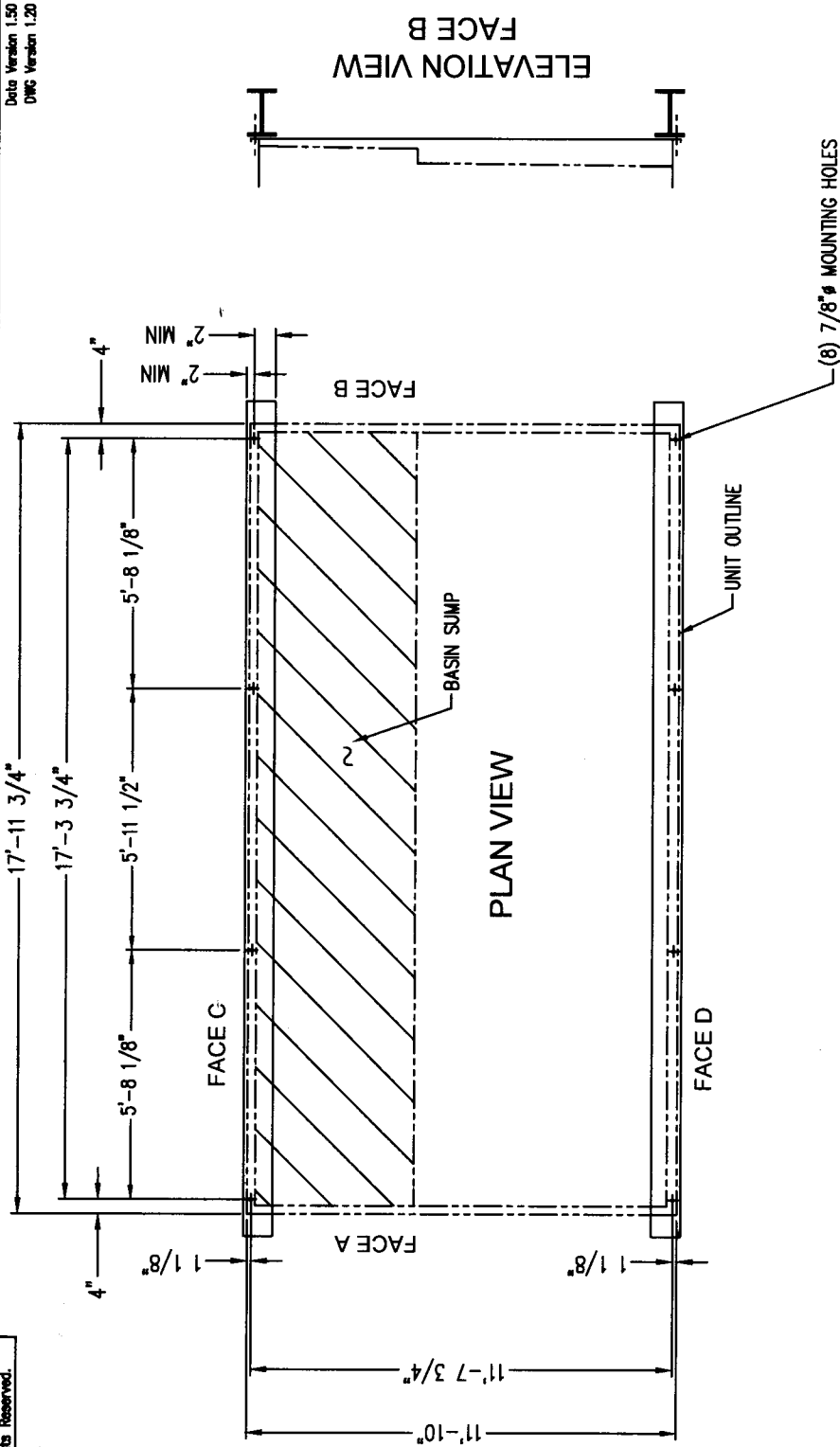
**BALTIMORE  
AIRCOIL COMPANY**

**PT2 Single Cell Unit Print  
Internal Belt Drive**

DRAWING NUMBER:  
**UP-Q16039354302**

ORDER NO: **Q16039354302**

DATE: **4/8/2016 1:14:48 PM**



PLAN "A" STEEL

Model Number	Shipping Weight	Operating Weight
PT2-1218A-301	11747	21137

- Notes
- 1) Drawings are not to scale. All dimensions are in feet and inches.
  - 2) Operating weight and weight loading are for units with water level in basin at overflow.
  - 3) Unit support beams and anchor bolts to be designed and furnished by others.
  - 4) Support beams must be flush and level at top.
  - 5) All supporting steelwork must be designed in accordance with accepted structural practice.
- Maximum deflection of steelwork under unit to be 1/360 of span, not to exceed 1/2".

<b>BALTIMORE AIRCOIL COMPANY</b> 		<b>PT2 Single Cell Unit Support</b> <b>Direct Drive</b>	
		ORDER NO: <b>Q16039354302</b> DATE: <b>4/8/2016 1:15:04 PM</b>	
		DRAWING NUMBER: <b>SS-Q16039354302</b>	

4

## NOTICE OF PROPRIETARY RIGHTS

This document contains confidential technical data, including trade secrets, proprietary to Puriflux, Inc. Disclosure of this data to you is expressly conditioned upon your agreement that its use is limited to the specific application for which it was provided and that you will not, without the written consent of Puriflux, Inc., copy, reproduce, or otherwise disclose this data to any other person or entity.

PUMP MOTOR				
FULL LOAD AMPS ( 3ø, 60Hz )				
MOTOR HP	208 VOLTS	230 VOLTS	460 VOLTS	575 VOLTS
10	29.2	25.4	12.7	10.1
15	45.1	39.2	19.6	15.7
20	58.9	51.2	25.6	20.5
25	74.5	64.8	32.4	25.9
30	86.9	75.6	37.8	30.2
40	116.0	101.0	50.4	40.3

FULL LOAD CURRENTS LISTED ABOVE ARE "AVERAGE VALUES" FOR HORSEPOWER RATED MOTORS OF SEVERAL MANUFACTURERS.

THE RATED FULL LOAD CURRENT SHOWN ON THE MOTOR NAMEPLATE MAY VARY BY MANUFACTURER.

## PURGE TIMER PROGRAMMING

THE PUROFLUX AUTO PURGE TIMER IS EQUIPPED WITH TWO CONTROL DIALS TO PROGRAM THE PURGING CYCLES TO MATCH YOUR SPECIFIC NEEDS.

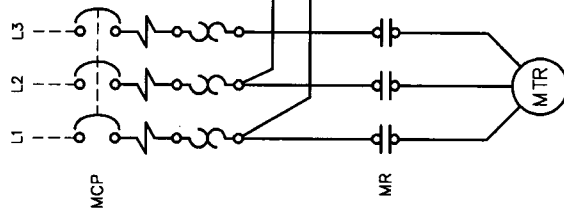
## CYCLE TIME

DIAL UPPER INDICATOR (T1) TO THE DESIRED FREQUENCY OF PURGING  
RANGE : 14 MINUTES TO 24 HOURS  
FACTORY SETTING : 25% (APPROX EVERY 6 HRS)

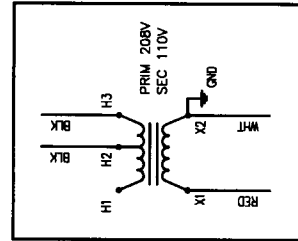
## PURGING TIME

DIAL LOWER INDICATOR (T2) TO THE DESIRED DURATION OF PURGING  
RANGE : 6 TO 60 SECONDS  
FACTORY SETTING : 35% (APPROX 20 SEC)

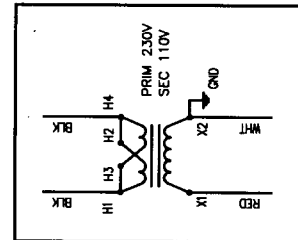
## POWER SUPPLY



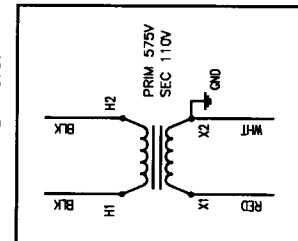
ALTERNATE - 208V



ALTERNATE - 230V



ALTERNATE - 575V



1

2

3

4

DWG. NO. 642-0121

SH 1

REV -

A

PF-64 SERIES : PUMP PACKAGE SYSTEM  
AUTO PURGE PANEL WITH REMOTE STOP/START

PUROFLUX CORPORATION

3331 LARRY PLACE  
SUN VALLEY, CA 94035  
PHONE: (415) 574-0018  
FAX: (415) 574-0005

SIZE C

DATE CODE

DWG. NO. 642-0121

REV -

SHEET 1 OF 1

SCALE NONE

RELEASE DATE 10-18-12

IN APPROVED

BY APPROVED

CHECKED

DESIGN APPROVED

INTERPRET DRAWING FOR

APPLICABLE STANDARDS

DO NOT SCALE THIS DRAWING

UNLESS OTHERWISE NOTED

MATERIAL

HEAT TREAT

FINISH

NEXT ASSEMBLY

APPLICATION

1

2

3

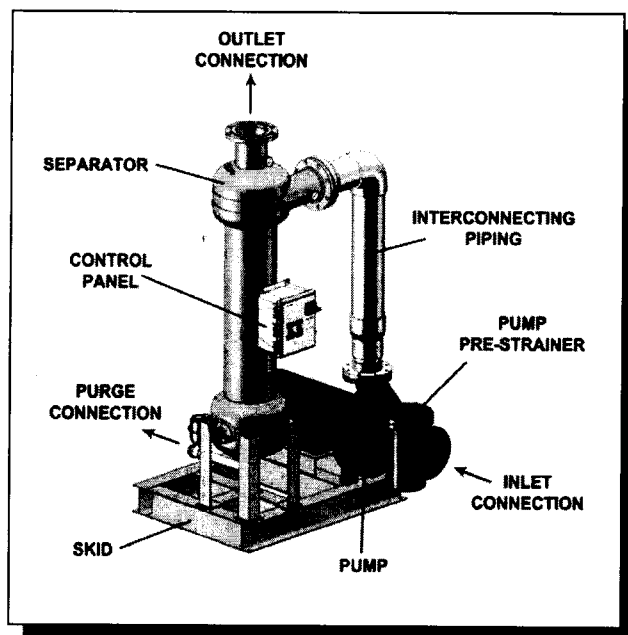
4



**PUROFLUX CORPORATION**

**ENGINEERING • MANUFACTURING • SERVICE**

## PF64-040(A) SPECIFICATION SHEET PUMP PACKAGE SYSTEM



SPECIFICATIONS	PF64-040(A)
Flow Rate	330 gpm
System Inlet Connection	4" flng
System Outlet Connection	4" flng
Purge Connection	1 1/2" fpt
Separator Model	PF61-040
Separator Purge	Automatic
Pump Motor	10 hp
Volume	15 gal
Est. Weight, Dry	800 lbs
Est. Weight, Operating	926 lbs

- Removes particulate as low as 45 microns
- 150 psi working pressure

- Fully assembled skid package
- One year limited warranty

### **SYSTEM COMPONENTS**

#### **Separator :**

- PF61-040 - 4" flanged separator
- Fusion bonded polyester coated vessel
- 1/4" Manual air bleed valve
- 0 to 160 psi gauges on influent / effluent

#### **Pump :**

- Close coupled, end suction centrifugal pump
- 3450 rpm, TEFC motor

#### **Skid :**

- Fusion bonded polyester coated carbon steel

#### **Electrical Controls :**

- NEMA 4X fiberglass enclosure
- Motor overload/short circuit protection
- Hand-Off-Auto switches

#### **Automatic Purge :**

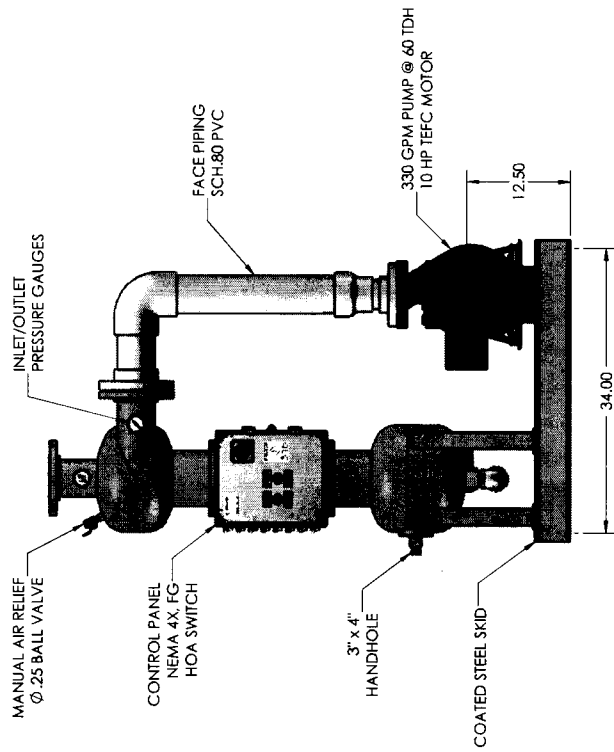
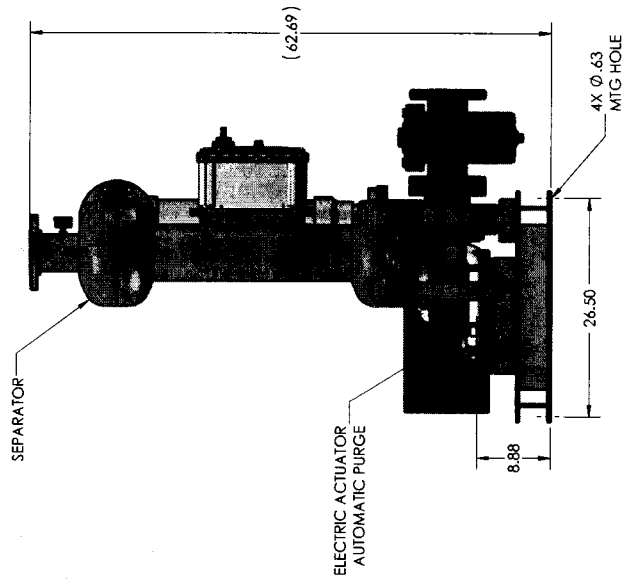
- Electrically actuated industrial grade ball valve
- Adjustable purge timer

#### **Interconnecting Pipe :**

- Sch.80 PVC piping

**Options:** Manual Purge, Removable Dome, 22 1/2° profile

1. DIMENSIONS ARE IN INCHES
2. DIMENSIONS MAY VARY SLIGHTLY - DO NOT USE FOR CONSTRUCTION
3. SEPARATOR SYSTEM IS RATED FOR 150 PSI WORKING PRESSURE



UNLESS OTHERWISE SPECIFIED		PART NO	PF-64-040(A) AP SEPARATOR PACKAGE 330 GPM - W/SKID MOUNTED PUMP	
TOLERANCES	UNLESS OTHERWISE SPECIFIED	DRAWN	K. CARTER	
ANGULAR MATCH	1	CHECKED		
THIRD PLACE DECIMAL	1	DESIGNED APPROVED		
INTERFIT TOLERANCE	1	MANUFACTURED APPROVED		
TOLERANCE FIT	1	QC APPROVED		
MATERIAL		SIZE	CAGE CODE	DWG NO
FINISH		C		641-0017
REV		J		
NEXT ASSY				
APPLICATION				
		RELEASE DATE	12-21-01	
		SCALE	NONE	
		SHEET	1	OF 1

PROPRIETARY AND CONFIDENTIAL  
THE INFORMATION CONTAINED IN THIS  
DRAWING IS THE SOLE PROPERTY OF  
PULCHINCORP, INC.  
NO PART OF THIS DRAWING IS TO BE  
REPRODUCED OR TRANSMITTED IN ANY FORM OR BY ANY MEANS, ELECTRONIC OR MECHANICAL, INCLUDING PHOTOCOPYING, RECORDING, OR BY ANY INFORMATION STORAGE AND RETRIEVAL SYSTEM, WITHOUT PERMISSION IN WRITING FROM PULCHINCORP, INC.