



TVHS
CBOC's
Materials and
Finishes

TVHS CBOC's

Table of contents

○ Flooring

- Carpet Tile
- Broadloom
- Ceramic Tile
- Luxury Vinyl Tile
- Vinyl Composition Tile

○ Base

- Rubber base

○ Walls

- Paint
- Wall covering
- Wall Protection

○ Ceilings

- Ceiling Tile/Grid
- Lighting

○ Casework Finishes

- Laminates
- Solid surface

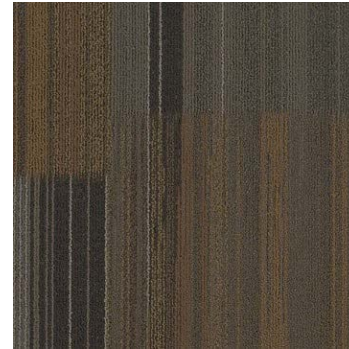
○ Architectural Elements

- Acrylic Panels
- Dimensional Wall Panel
- Texturized Wall Protection
- Display Holders
- Laminate Wall Panels

Flooring: Carpet=CP



- CP-1: Mannington Commercial: Bark II: Walnut: 85294: Brick Ashlar



- CP-3: Tandus Stack 9: 04432: Color: Barn Door 75006



- CP-2: Mannington Commercial: Canopy II: Broadloom: Color: Walnut: 85294

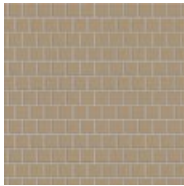
Flooring: Ceramic Tile =T & Epoxy=EP



- T-1: Stonepeak Ceramics, Simply Modern: Size: 12" x24":Color: Simply Tan
- Grout: Mapei: Pewter: 02



- WT-1:Stonepeak Ceramics, Slate Collection: Size: 12" x 24": Color: Simply Gray
- Grout: Mapei: Pewter: 02



- WT-2: Stone Peak Ceramics, Simply Tan Glass Mosaic: USG12MS164: Size: 1" x 1"
- Grout: Mapei: Pewter: 02

Flooring: Luxury Vinyl Tile=LVT



- LVT-1: Mannington Spacia: Abstract: Softline Pebble: SS5A3802: Size: 12" x 24": 20 mil wear layer



- LVT-2: Mannington Spacia: Abstract: Softline Charcoal: SS5A3803: Size: 18" x 18": 20 mil wear layer

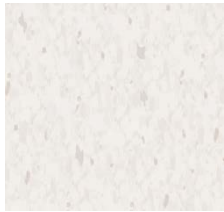


- LVT-3: Mannington Spacia: Abstract: Bronze: SS5A4805: Size: 12" x 18": 20 mil wear layer



- LVT-4: Mannington Spacia: Warm Cherry: SSW2506: Size: 4" x 36": 20 mil wear layer

Flooring: Vinyl Composition Tile= VCT



- VCT-1: Mannington Commercial Essentials: Vinyl Composition Cool white: 141



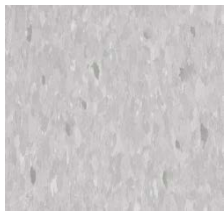
- VCT-4: Mannington Commercial Essentials: Vinyl Composition Tile: Frosted Jade: 255



- VCT-2: Mannington Commercial Essentials: Vinyl Composition Tile: Bed Rock

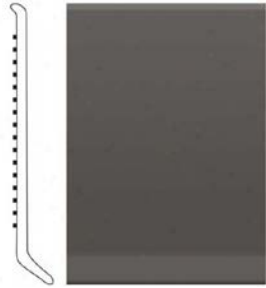


- VCT-4: Mannington Commercial Essentials: Vinyl Composition Tile: Pecan: 178

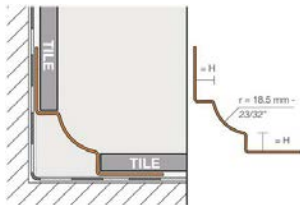


- VCT-3: Mannington Commercial Essentials: Vinyl Composition Tile: Pewter 112

Base: Rubber=RB & Tile=TB



- RB-1:Mannington Edge: 4" Rubber base: Color: Sable: 911



- TB-1: Install Tile to floor and provide transition strip between floor and wall

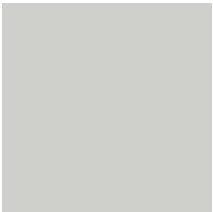
Walls: Paint=P



- P-1: Main Paint: Sherwin Williams: Creamy:SW7012 Eggshell



- P-2: Door Frames: Sherwin Williams: Keystone Gray: Taupe:SW7504 Semi-Gloss



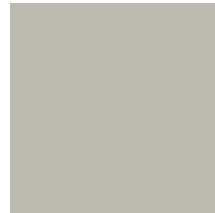
- P-3: Sherwin Williams: Gray Clouds: SW7658: Eggshell



- P-4: Sherwin Williams: SW6235: Foggy Day: Eggshell



- P-5: Accent: Sherwin Williams: Retreat:SW6207:Eggshell



- P-6: Sherwin Williams: Downing Stone: SW2821: Eggshell



- P-7: Accent: Sherwin Williams: SW7694 Dromendary Camel: Eggshell



- P-8: Accent: Sherwin Williams: Rockwood Terra Cotta:SW2803

Walls: Vinyl Wallcovering: VWC



- VWC-1: Vinyl Wallcovering:
Versa:Sequence:ASL-111816
Chinois



- VWC-2: Vinyl
Wallcovering:Versa:Cityblocks:
A128-899

Wall Protection



- CG-1CR-2: Corner guard, SM-20N, Color: Beige: Slate or Color: Eggshell



- CR-2: Acrovyn: Crash rail: ECR-32A : Aluminum finish



- CG-1: 3" Stainless Steel Corner guard



- WP-1: Acrovyn Wall Protection Panel: Color: Eggshell: 100



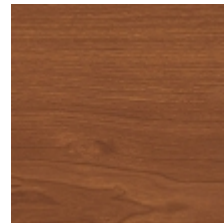
- HR-1:Acrovyn: HR-6CN: Handrail: Eggshell :100
- Or stainless



- WP-2: Acrovyn Wall Protection Panel: Color: Slate



- CR-1:Crash Rail:SCR-40N: Color: Eggshell or Slate



- WP-3: Acrovyn Wall Protection Panel: Color: Amber Cherry

Ceilings: Acoustical Ceiling Tile=CT

- Acoustical Tile:
USG: Radar Clima
Plus High CAC &
High NRC

Exhibit F

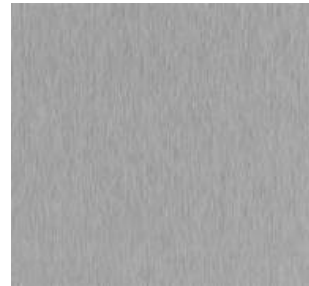
Casework Finishes

Plastic Laminate=PL

Solid Surface=SS



- PL-1: Wilsonart Amber Cherry:7919K-78:Matte Finish



- PL-4: Wilsonart Decorative Metals: #L64441 (408): Bright Brushed Sterling



- PL-3: Wilsonart: Sheer Mesh:4876-38



- SS-1: Corian: Solid Surface: Color: Fossil



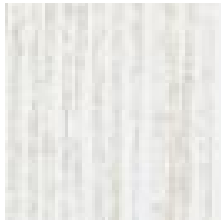
- PL-3: Wilsonart: Skyline Walnut: 7964



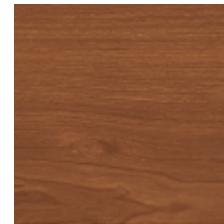
- SS-2: Corian: Solid Surface: Color: Bone

Architectural Elements:

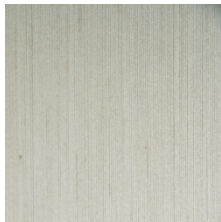
Acrylic Panels=AP, Dimensional Wall Panel=DWP,
Texturized Wall Protection=TWP



- AP-1: 3Form: Acrylic Panel:
Style: Fray: Pearl: Finish:
Sandstone: Gauge:1/8"



- DWP-2: WPS: Wall Panel System: Shadowline System: Wilsonart: Amber Cherry: 7919K-78: Metal reveal to have nickel finish



- AP-2: 3Form: Acrylic Panel:
Style: Linea Ivory: Finish:
Sandstone: Gauge: 1/8"



- DWP-1: Interlam: Model:
336.786.6254/SST003