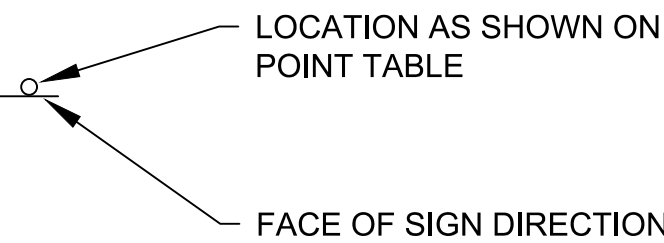


NOTES:

- POINT LOCATIONS FOR SIGN POST BASES ARE APPROXIMATE. STAKE LOCATION AND OBTAIN APPROVAL FROM COR. PRIOR TO FINAL INSTALLATION.
- FOR SIGN DESIGNATIONS AND DESIGN INTENT, PLEASE REFERENCE THE CHAPTER 12 NATIONAL CEMETERY SIGNS IN THE US DEPARTMENT OF VETERANS AFFAIRS SIGNAGE DESIGN GUIDE. (www.cfm.va.gov/till/signs/signage12-Cemetery.pdf)
- FOR TYPICAL NCA SIGN DESIGNATION OVERVIEW, SEE NCA SIGNAGE DESIGN GUIDE.
- FOR STREET NAMES, MATCH EXISTING SIGNAGE TEXT PRIOR TO DEMOLITION.

SIGN ORIENTATION LEGEND:

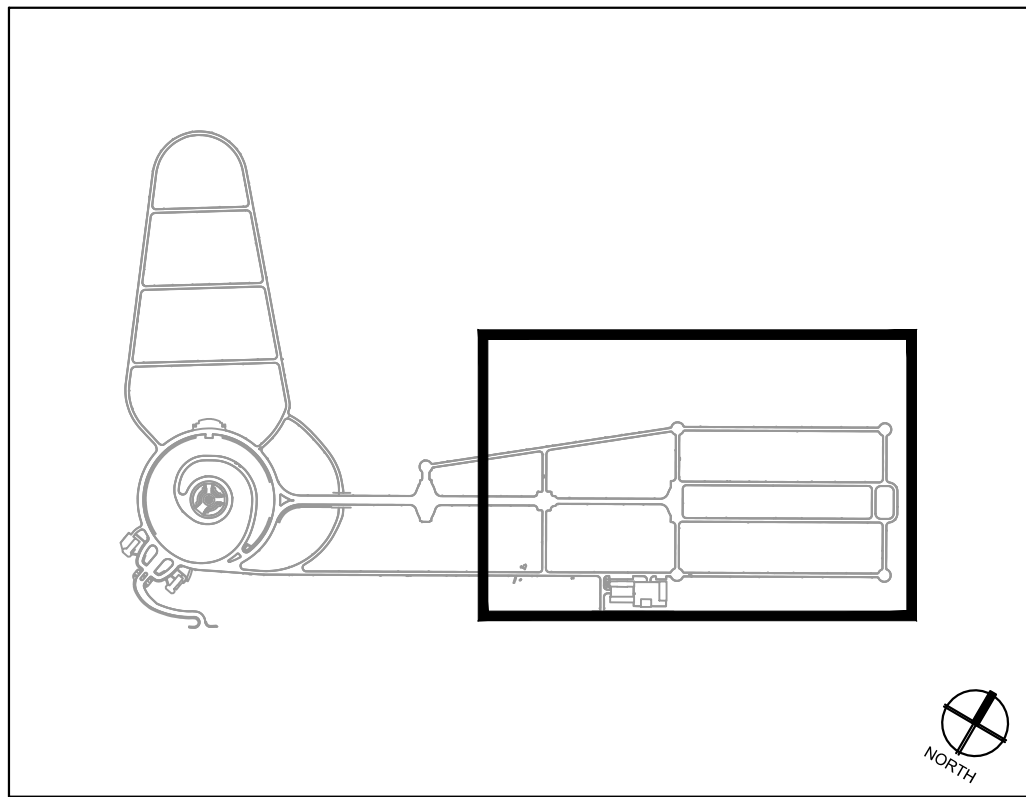


SIGNAGE LEGEND

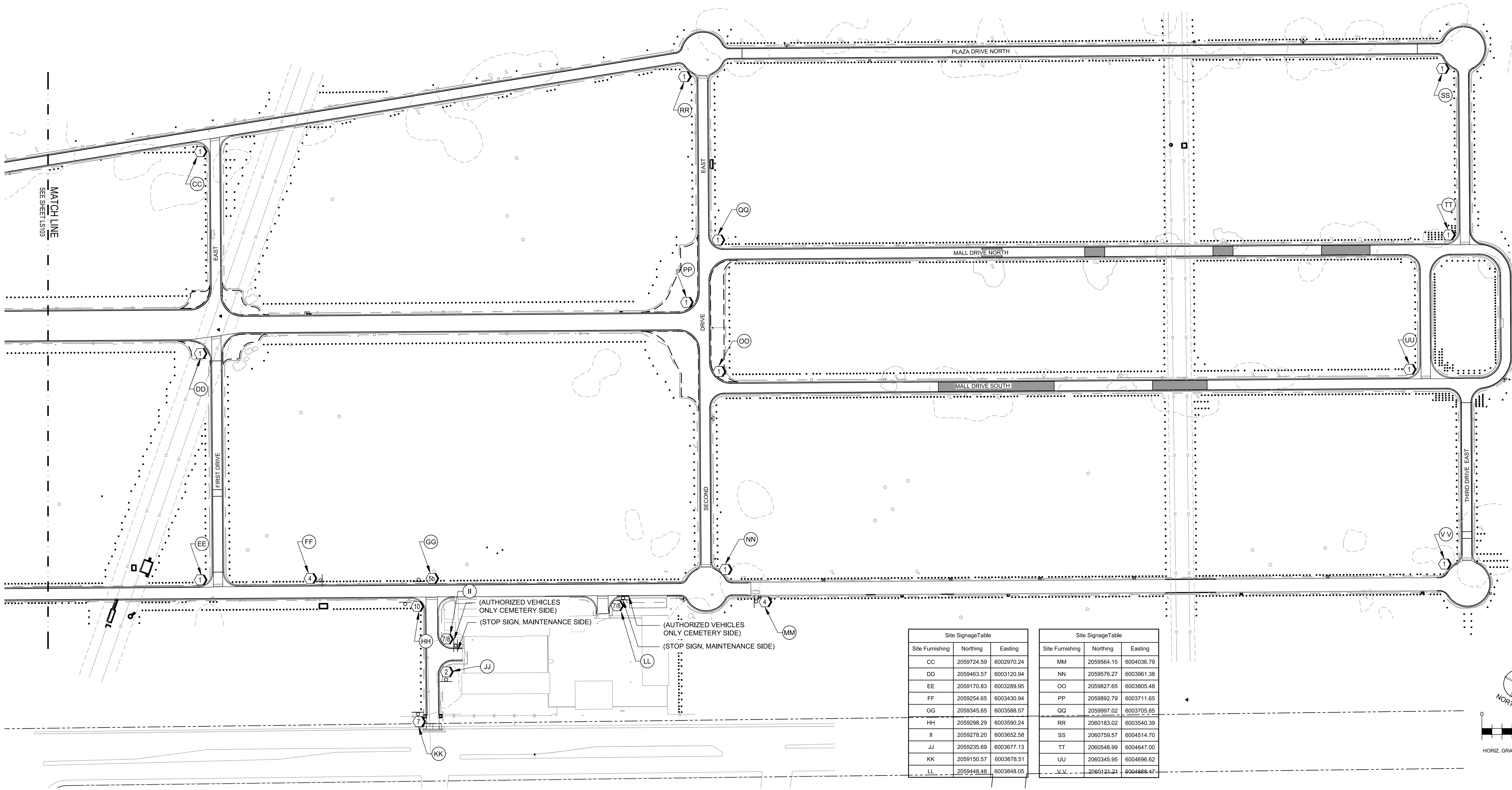
PROPOSED SIGNS SUBJECT TO FURTHER REVIEW

- 1 STREET SIGN - SEE E5 & F5/ LS501 FOR TYPICAL ITEM NC-06.01 -c2
- 2 VISITOR INFORMATION SIGN - SEE F3/ LS502 FOR TYPICAL ITEM NC-01.02 -c
- 4 SPEED LIMIT TRAFFIC REGULATORY SIGN - SEE F3/ LS501 FOR TYPICAL ITEM NC-03.01A--c2
- 5b DIRECTIONAL INFORMATION SIGN - SEE F1/ LS501 FOR TYPICAL ITEM NC-04.02 -c2  
- SEE C8/ LS502 DIRECTIONAL PANEL INFORMATION
- 7 STOP TRAFFIC REGULATORY SIGN - SEE F3/ LS501 FOR TYPICAL ITEM NC-03.01 -c3  
DOUBLE SIDED SIGN, MOUNT ON ONE POST.

- 8 AUTHORIZED VEHICLES ONLY SIGN - SEE F8/ LS502 FOR TYPICAL ITEM NC-01.03 -c3  
(MESSAGE LAYOUT A) DOUBLE SIDED SIGN, MOUNT ON ONE POST.
- 10 EXIT TO SNEATH LANE SIGN - SEE F8/ LS502 FOR TYPICAL ITEM NC-01.03 -c3

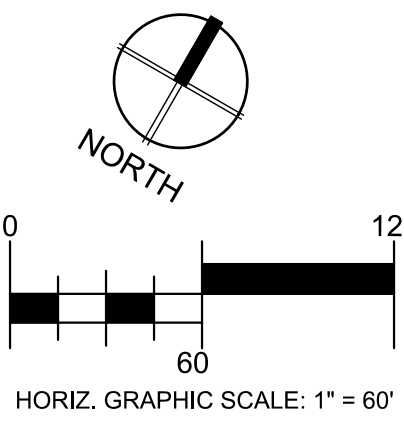


KEYMAP

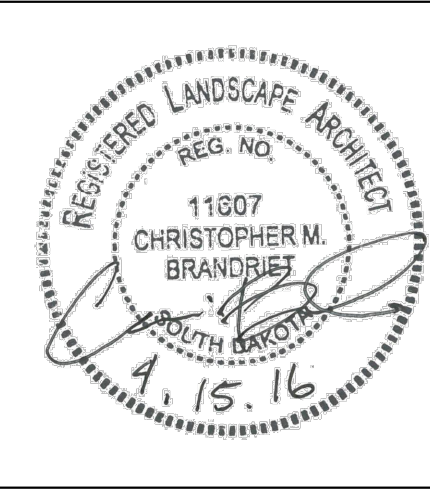


Site SignageTable		
Site Furnishing	Northing	Easting
CC	2059724.59	6002970.24
DD	2059463.57	6003120.94
EE	2059170.83	6003289.95
FF	2059254.65	6003430.94
GG	2059345.65	6003588.57
HH	2059298.29	6003590.24
II	2059278.20	6003652.58
JJ	2059235.69	6003677.13
KK	2059150.57	6003678.51
LL	2059448.48	6003848.05

Site SignageTable		
Site Furnishing	Northing	Easting
MM	2059564.15	6004036.79
NN	2059576.27	6003961.38
OO	2059827.65	6003805.48
PP	2059892.79	6003711.65
QQ	2059997.02	6003705.85
RR	2060183.02	6003540.39
SS	2060759.57	6004514.70
TT	2060548.99	6004647.00
UU	2060345.95	6004696.62
V.V.	2060121.21	6004888.47



Revisions	Date



Architect/Engineers

FOURFRONT  
DESIGN INC.

517 7th street rapid city sd 57701  
ph: 605.342.9470 fax: 605.342.2377  
www.4front.biz  
ARCHITECTURE | ENGINEERING

Subconsultant List	
PROFESSIONAL LAND SERVICES, 901 SNEATH LANE, STE. 117, SAN BRUNO, CA 94066	
NEIL O. ANDERSON AND ASSOCIATES, A TERRACON COMPANY, 5075 COMMERCIAL CIRCLE, STE. E, CONCORD, CA 94520	

N ATIONAL  
C EMENTERY  
A DMINISTRATION

Drawing Title  ENLARGED SIGNAGE LAYOUT NEW SIGNAGE #3		Project Title  REPAIR ROADS, CURBS, STORM DRAINAGE & REPLACE SIGNAGE		Date:  APRIL 15, 2016
Approved: Director, Office of Construction Management		Building Number  ----	Checked  EH	Drawn  CB/AW
Approved: Director, Project Management Service		Location  GOLDEN GATE NATIONAL CEMETERY SAN BRUNO, CALIFORNIA		Project No.  895CM3048
				DRAWING NO.  LS104
				Dwg. 136 Of 141