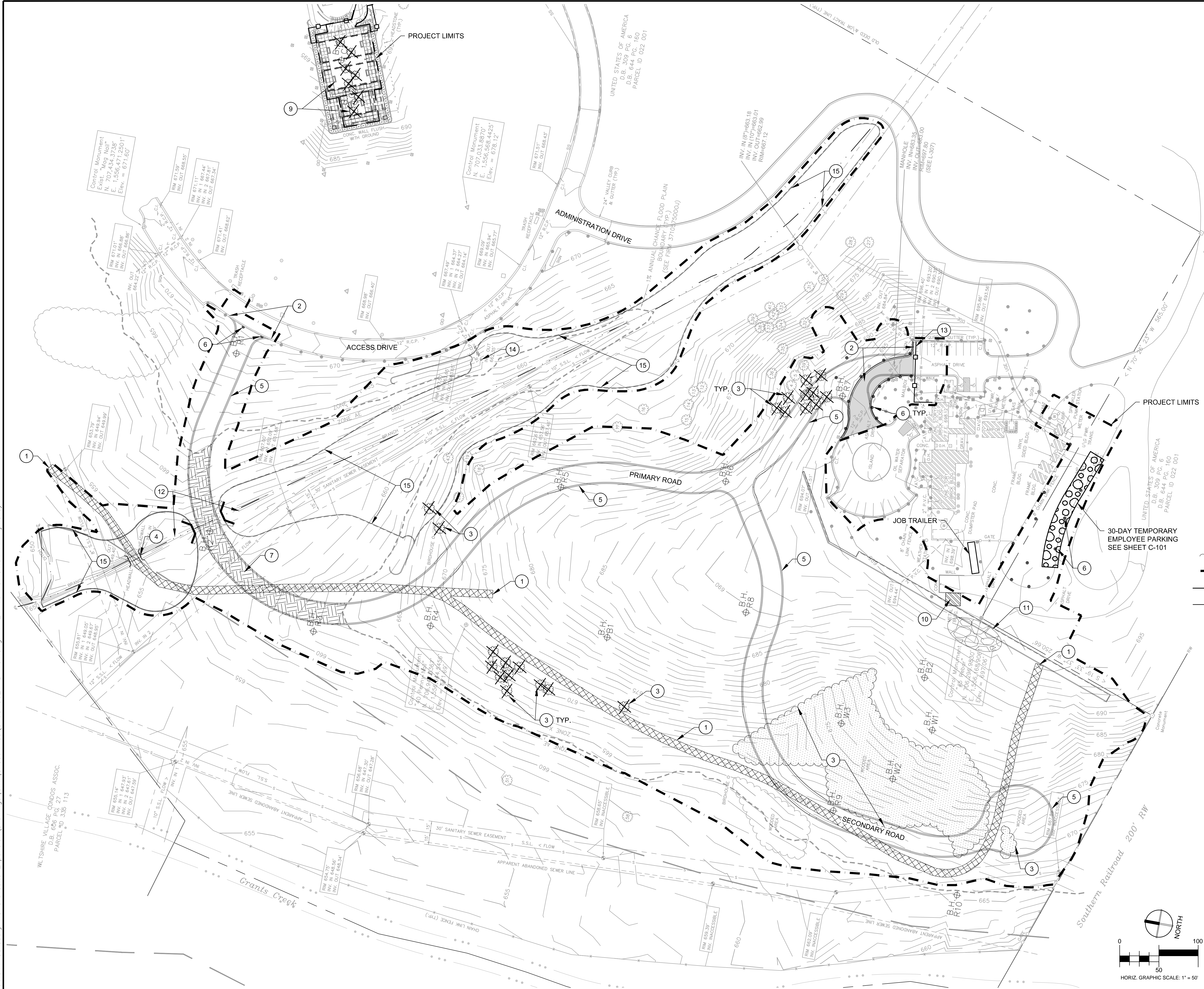


three inches = one foot
one and one half inches = one foot
one inch = one foot
three quarters inch = one foot
one half inch = one foot
three eighths inch = one foot
one quarter inch = one foot
one eighth inch = one foot



KEYNOTES

- EXISTING SOIL AND GRAVEL ROAD TO BE REMOVED AFTER COMPLETION OF NEW CULVERT CROSSING. ROUGHEN SURFACE AND PLACE TOPSOIL PRIOR TO SEED PLACEMENT.
- REMOVE EXISTING ASPHALT AND CURB AND GUTTER. SAWCUT FULL DEPTH. REMOVE FULL DEPTH OF PAVEMENT, AS NEEDED.
- TREE, SHRUB AND VEGETATION REMOVAL INCLUDES DIGGING OUT AND OFF-SITE REMOVAL OF STUMPS AND ROOTS.
- REMOVE EXISTING CULVERT AND ENDWALLS AFTER INSTALLATION OF NEW CROSSING IS COMPLETE.
- PROPOSED CURB LINE SHOWN FOR REFERENCE ONLY.
- SPRINKLER SYSTEM IN CONFLICT WITH NEW WORK. REFER TO IRRIGATION PLANS FOR REMEDIATION AND / OR PROTECTION REQUIREMENTS.
- REMOVE AND REPLACE UNSUITABLE MATERIAL FROM THIS AREA AND REPLACE WITH AN APPROVED MATERIAL. SEE GENERAL NOTE 4 THIS SHEET AND SECTION 01 00 02, PARAGRAPH 1.2 OF THE SPECIFICATIONS.
- NOT USED.
- REFER TO SHEET C-205 FOR MINOR DEMOLITION IN COLUMBARIUM.
- REMOVE METAL SHED AND CONCRETE PAD.
- APPROXIMATE LOCATION OF STONE BLOCK PILE. RELOCATE STONE BLOCKS ON CEMETERY PROPERTY AS DIRECTED BY CEMETERY.
- PERMITTING REQUIRED IN ACCORDANCE WITH CLEAN WATER ACT, SECTIONS 401 AND 404 AND CITY OF SALISBURY FOR WORK WITHIN TRIBUTARY. REFER TO SPECIFICATION 01 57 19.
- TEMPORARY CHAIN LINK CONSTRUCTION FENCE APPROXIMATELY 406 LF. SEE SHEET C-101.
- REMOVE 30 LF OF EXISTING 18" RCP. STOCKPILE RIPRAP FOR RE-USE.
- PROPOSED METAL LANDSCAPE EDGING IS BOUNDARY OF PROPOSED RIPARIAN BUFFER. SHOWN FOR REFERENCE ONLY. REMOVE GRASS WITHIN AS NEEDED FOR RIPARIAN PLANTINGS.

LEGEND

- SOIL AND GRAVEL ROAD REMOVAL
- ASPHALT/CURB AND GUTTER REMOVAL
- TREE REMOVAL (MASS / CLUSTER)
- UNSUITABLE SOIL REMOVAL AND REPLACEMENT. REFER TO STATEMENT OF BID ITEMS IN SPECIFICATION 01 00 02.
- REMOVE TREE, TYP.
- TREE BOUNDARY
- PROJECT LIMITS
- TEMPORARY CONSTRUCTION FENCE
- TRIBUTARY CENTERLINE
- BOREHOLE LOCATION, REFER TO PLANS B-102 THROUGH B-104 AND GEOTECH REPORT
- STONE BLOCK PILE

- ### GENERAL NOTES
- EXISTING TOPOGRAPHICAL AND PLANIMETRIC FEATURES (CONCRETE, CURB, ASPHALT AND LANDSCAPING FEATURES) ARE TO BE REMOVED AS DESIGNATED.
 - THE LOCATION OF EXISTING UTILITIES, INCLUDING UNDERGROUND UTILITIES, IS INDICATED ON THE DRAWINGS INSOFAR AS THEIR EXISTENCE AND LOCATION WERE KNOWN AT THE TIME OF THE PREPARATION OF THE DRAWINGS. HOWEVER, NOTHING IN THESE CONTRACT DOCUMENTS SHALL BE CONSTRUED AS A GUARANTEE THAT SUCH UTILITIES ARE IN THE LOCATION INDICATED OR THAT THEY ACTUALLY EXIST, OR THAT OTHER UTILITIES ARE NOT WITHIN THE AREA OF OPERATIONS. THE CONTRACTOR SHALL MAKE ALL NECESSARY INVESTIGATIONS TO DETERMINE THE EXISTENCE AND LOCATIONS OF SUCH UTILITIES. THE CONTRACTOR SHALL PAY FOR ANY DAMAGE TO AND FOR ANY MAINTENANCE AND PROTECTION OF EXISTING UTILITIES AND STRUCTURES.
 - ALL EXISTING UTILITIES TO REMAIN IN PLACE AND IN SERVICE UNLESS OTHERWISE NOTED. COORDINATE WITH CEMETERY PRIOR TO PERFORMING DEMOLITION WORK.
 - REMEDIATE SOILS AS REQUIRED TO PROVIDE A FIRM SUBGRADE FOR IMPROVEMENTS PER THE GEOTECHNICAL ENGINEERING REPORT AND GEOTECHNICAL ENGINEERS REPRESENTATIVE DURING CONSTRUCTION. REFER TO STATEMENT OF BID ITEMS IN SPEVIFICATION 01 00 02 FOR UNIT PRICING AND EARTHWORK SPECIFICATIONS FOR WORK REQUIREMENTS.
 - THE CONTRACTOR SHALL CONTACT 'NC811' BY CALLING 811 OR 800-632-4949 A MINIMUM OF 72 HOURS PRIOR TO BEGINNING ANY WORK IN THE VICINITY OF EXISTING UTILITIES.
 - ROCK REMOVAL IS EXPECTED FOR GRADING OPERATIONS, INSTALLATION OF CRYPTS AND OVER EXCAVATION OF CASKET AREA. REFER TO STATEMENT OF BID ITEMS IN SPECIFICATION 01 00 02 FOR UNIT PRICING AND EARTHWORK SPECIFICATION FOR WORK REQUIREMENTS.

BID DOCUMENTS

Revisions 		Date 	
CONSULTANTS:			
Terracon Consulting Engineers and Scientists 110 10th St. North Birmingham, AL 35203 (205) 443-5302		Peaks To Plains Design 404 North 51st Street, Suite 405 Billings, Montana 59101 (406) 294-8609 / (406) 294-9670 FAX WWW.PEAKSTOPLAINS.COM	
SWILVERDADE SURVEYING COMPANY, P.A.		Aqua Engineering Inc. Innovative Water Solutions 375 E. Henderson Road, Building 2-01 Fort Collins, CO 80525-2196 (970) 225-0888 office (970) 225-0888 cell www.aquaengineering.com	
Albertson Engineering Inc.		REGISTERED PROFESSIONAL ENGINEER CASSANDRA L. ZWART SOUTH DAKOTA 7/22/16	
ARCHITECT/ENGINEERS:			
FOURFRONT DESIGN INC. 517 7th street rapid city sd 57701 p 605.342.9470 f 605.342.2377 www.4front.biz			
Drawing Title OVERALL EXISTING CONDITIONS AND DEMOLITION PLAN		Project Title SALISBURY NATIONAL CEMETERY GRAVESITE EXPANSION	
Approved Project Director		Location SALISBURY NATIONAL CEMETERY SALISBURY, NC	
Date 7/22/16		Checked CZ	Drawn JM
Project Number 876CM3021		Drawing Number D-101	
Building Number N/A		Dwg. 8 of 63	
NCA DESIGN AND CONSTRUCTION SERVICE Department of Veterans Affairs			