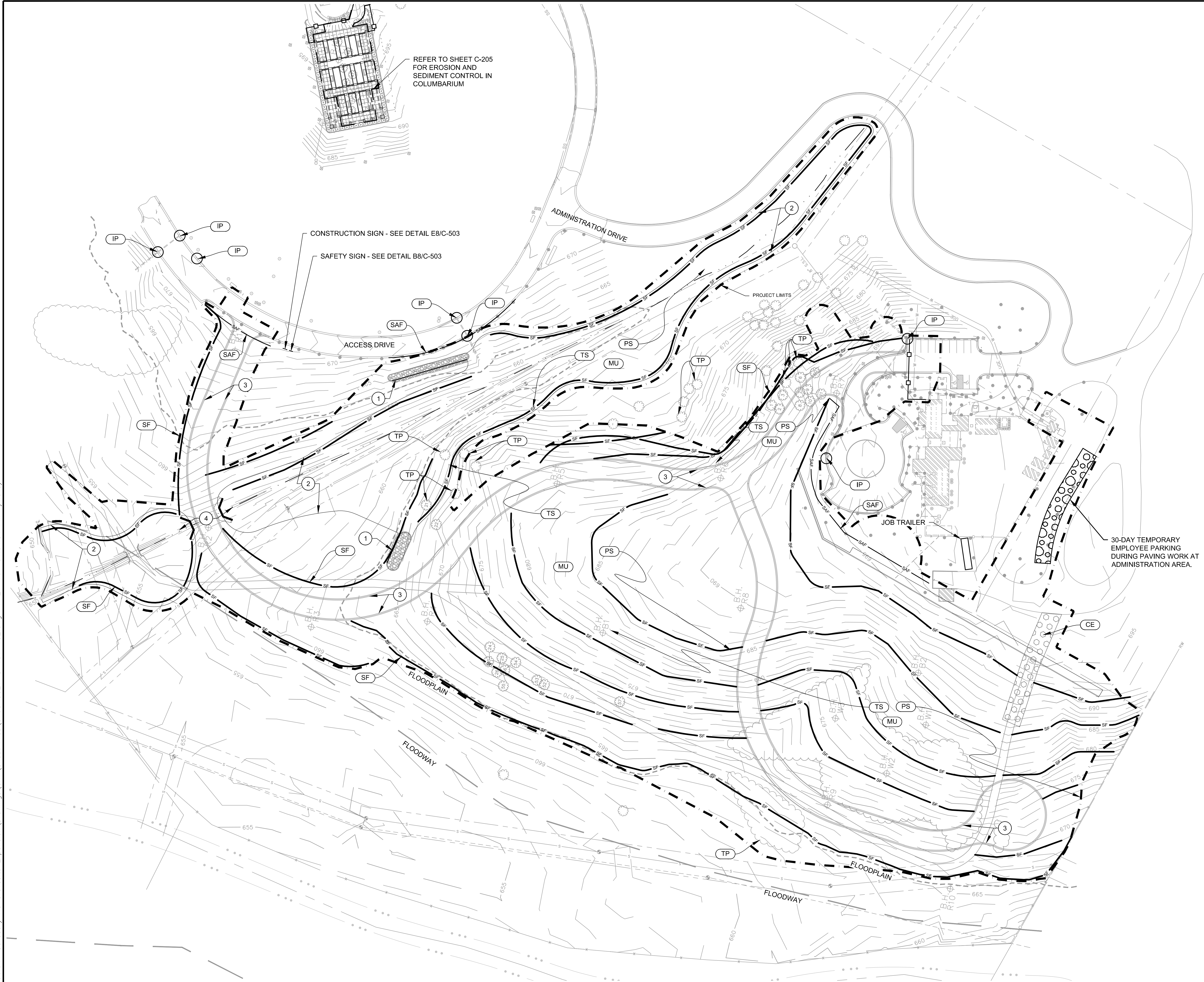


three inches = one foot
one and one half inches = one foot
one inch = one foot
three quarters inch = one foot
one half inch = one foot
three eighths inch = one foot
one quarter inch = one foot
one eighth inch = one foot

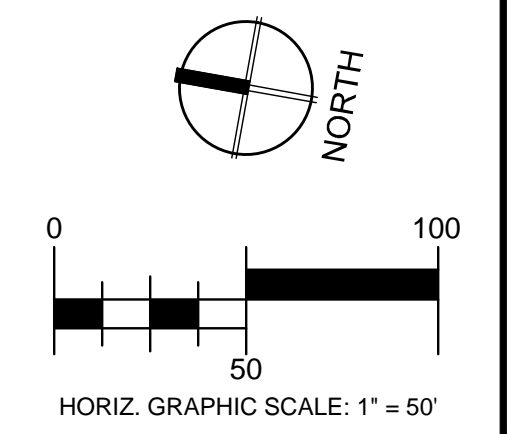


- ### KEYNOTES
- 1 WATER QUALITY TREATMENT AREA. REFER TO SHEET C-301. DO NOT INSTALL UNTIL ALL UPSTREAM AREAS ARE FULLY STABILIZED.
 - 2 RESTORED RIPARIAN AREA / METAL LANDSCAPING EDGING SHOWN FOR REFERENCE ONLY.
 - 3 CURB AND GUTTER SHOWN FOR REFERENCE ONLY.
 - 4 STREAM BYPASS PUMPING REQUIRED FOR CULVERT CONSTRUCTION WITHIN TRIBUTARY. SEE NOTES THIS SHEET. SEE DETAIL B1/C-502.

- ### LEGEND
- IP INLET PROTECTION - SEE E7/C-502
 - SF SILT FENCE - B2/C-501
 - TS TEMPORARY SEEDING - SEE B6/C-503
 - PS PERMANENT SEEDING - SEE SPECIFICATIONS
 - TP TREE PROTECTION - SEE E1/C-503
 - MU MULCHING - SEE SPECIFICATIONS
 - OP OUTLET PROTECTION - SEE B2/C-503
 - CE CONSTRUCTION ENTRANCE - SEE E2/C-501
 - SAF ORANGE SAFETY FENCE
 - WESTERN EXCELSIOR SS-2 ALL NATURAL MATTING OR EQUAL ON SLOPES 4:1 OR GREATER - SEE B7/C-502
 - TEMPORARY EMPLOYEE PARKING AREA. PLACE 4" THICK NC DOT #57 STONE WHERE INDICATED. CONTRACTOR TO RETURN AREA TO EXISTING CONDITIONS BY REMOVING STONE, SCARIFYING TOP 12" OF SUBGRADE AND SEEDING.
 - PROJECT LIMITS
 - CHAIN LINK CONSTRUCTION FENCE WITH VEHICULAR ACCESS GATE. SEE SPECIFICATION 01 00 00.

- ### STREAM BYPASS PUMPING NOTES
1. A MAXIMUM OF 60 DAYS OF PUMPING ALLOWED. CONTRACTOR TO EXPEDITE CULVERT CONSTRUCTION WITHIN TRIBUTARY.
 2. CONTRACTOR TO PROVIDE PUMPING PLAN AND EMERGENCY PUMPING PLAN TO COR FOR APPROVAL PRIOR TO STARTING THE WORK.
 3. CONTRACTOR TO PROVIDE AND HAVE ON-SITE AT ALL TIMES A COMPLETE BACK-UP PUMPING SYSTEM.
 4. PUMPING SYSTEM SIZING SHALL BE BASED ON 3.0 CUBIC FEET PER SECOND (CFS) NORMAL BANK-FULL FLOW.
 5. CONSTRUCTION
 - 5.1. SET UP BYPASS PUMP AND TEMPORARY PIPING. PLACE OUTLET OF TEMPORARY PIPE TO MINIMIZE EROSION AT DISCHARGE SITE OR PROVIDE TEMPORARY ENERGY DISSIPATION MEASURES. FIRMLY ANCHOR PUMP AND PIPING.
 - 5.2. CONSTRUCT IMPERVIOUS DIKE UPSTREAM OF WORK AREA TO IMPOUND WATER FOR BYPASS PUMP INTAKE. USE A FLOATING INTAKE FOR PUMPS WHERE POSSIBLE.
 - 5.3. CONSTRUCT AN IMPERVIOUS DIKE DOWNSTREAM, IF NECESSARY, TO ISOLATE WORK AREA.
 - 5.4. CHECK OPERATION OF PUMP AND PIPING SYSTEM
 - 5.5. UPON COMPLETION OF CONSTRUCTION, REMOVE IMPERVIOUS DIKE, BYPASS PUMP AND TEMPORARY PIPE.
 6. MAINTENANCE
 - 6.1. ROUTINELY INSPECT BYPASS PUMP AND TEMPORARY PIPING TO ENSURE PROPER OPERATION.
 - 6.2. INSPECT IMPERVIOUS DIKE FOR LEAKS AND REPAIR ANY DAMAGE.
 - 6.3. INSPECT DISCHARGE POINT FOR EROSION.
 - 6.4. ENSURE FLOW IS ADEQUATELY DIVERTED THROUGH PIPE.

- ### GENERAL NOTES
1. REFER TO C-102 FOR EROSION AND SEDIMENT CONTROL GENERAL NOTES
 2. TOTAL DISTURBED AREA IS ± 13.3 ACRES



BID DOCUMENTS

Revisions <table border="1"><thead><tr><th>No.</th><th>Description</th><th>Date</th></tr></thead><tbody><tr><td> </td><td> </td><td> </td></tr><tr><td> </td><td> </td><td> </td></tr><tr><td> </td><td> </td><td> </td></tr><tr><td> </td><td> </td><td> </td></tr></tbody></table>	No.	Description	Date													CONSULTANTS: <div> Consulting Engineers and Scientists 110 10th St. North Birmingham, AL 35203 P 205-988-1888 F 205-988-1889</div> <div> SULLIVAN ENGINEERING COMPANY, P.A. 3202 West Main Suite C Rapid City, South Dakota 57702 phone: 605.343.9608 fax: 605.341.7395</div> <div> PEAKS TO PLAINS DESIGN 404 NORTH 51ST STREET, SUITE 405 BILLINGS, MONTANA 59101 (406) 234-1809 / (406) 234-1870 FAX WWW.PEAKSTOPLAINS.COM</div> <div> Aqua Engineering Inc. Innovative Water Solutions 375 E. Henderson Road, Building 201 Fort Collins, CO 80525-2186 P 970.226.8888 ext 400 F 970.226.8888 ext 401 WWW.AQUAENGINEERING.COM</div> <div> Albertson Engineering Inc.</div>	ARCHITECT/ENGINEERS: <div> FOURFRONT DESIGN INC. 517 7th street rapid city sd 57701 p 605.342.9470 f 605.342.2377 www.4front.biz</div>	Drawing Title OVERALL EROSION AND SEDIMENT CONTROL PLAN - PHASE I	Project Title SALISBURY NATIONAL CEMETERY GRAVESITE EXPANSION	Project Number 876CM3021
	No.	Description	Date																	
Approved Project Director	Location SALISBURY NATIONAL CEMETERY SALISBURY, NC	Building Number N/A	Drawing Number C-101 Dwg. 9 of 63																	

NCA DESIGN AND CONSTRUCTION SERVICE
Department of Veterans Affairs