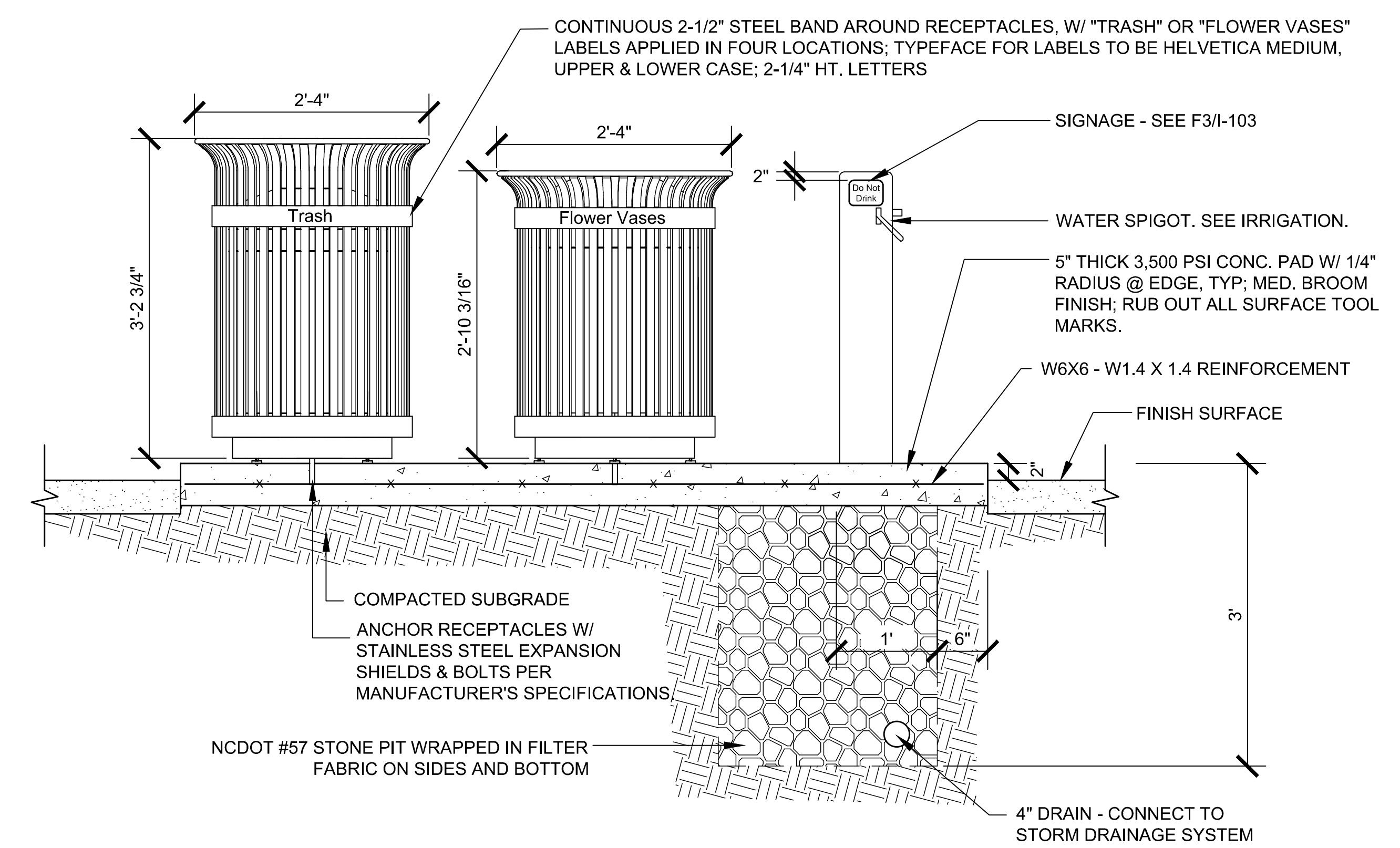
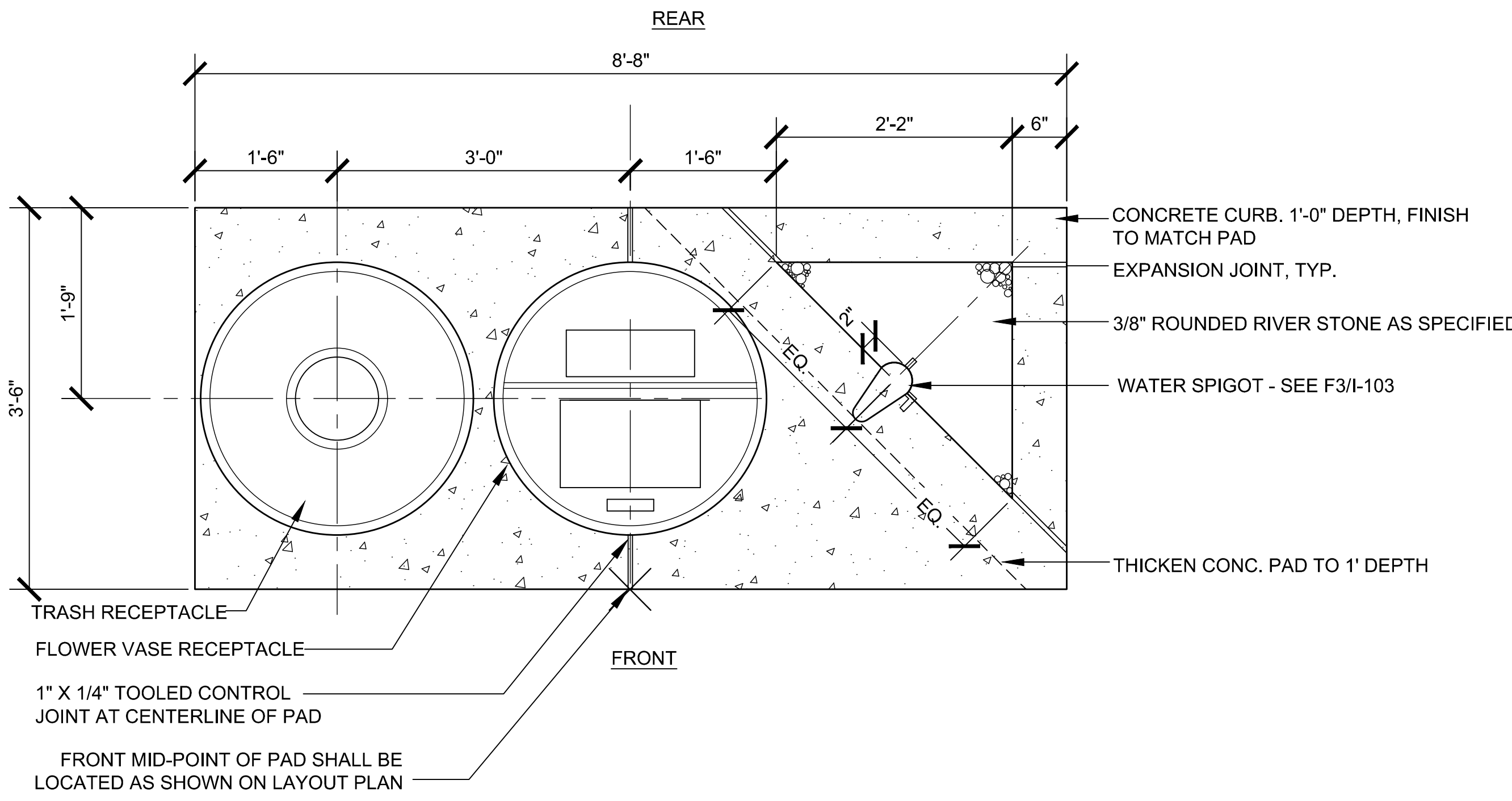


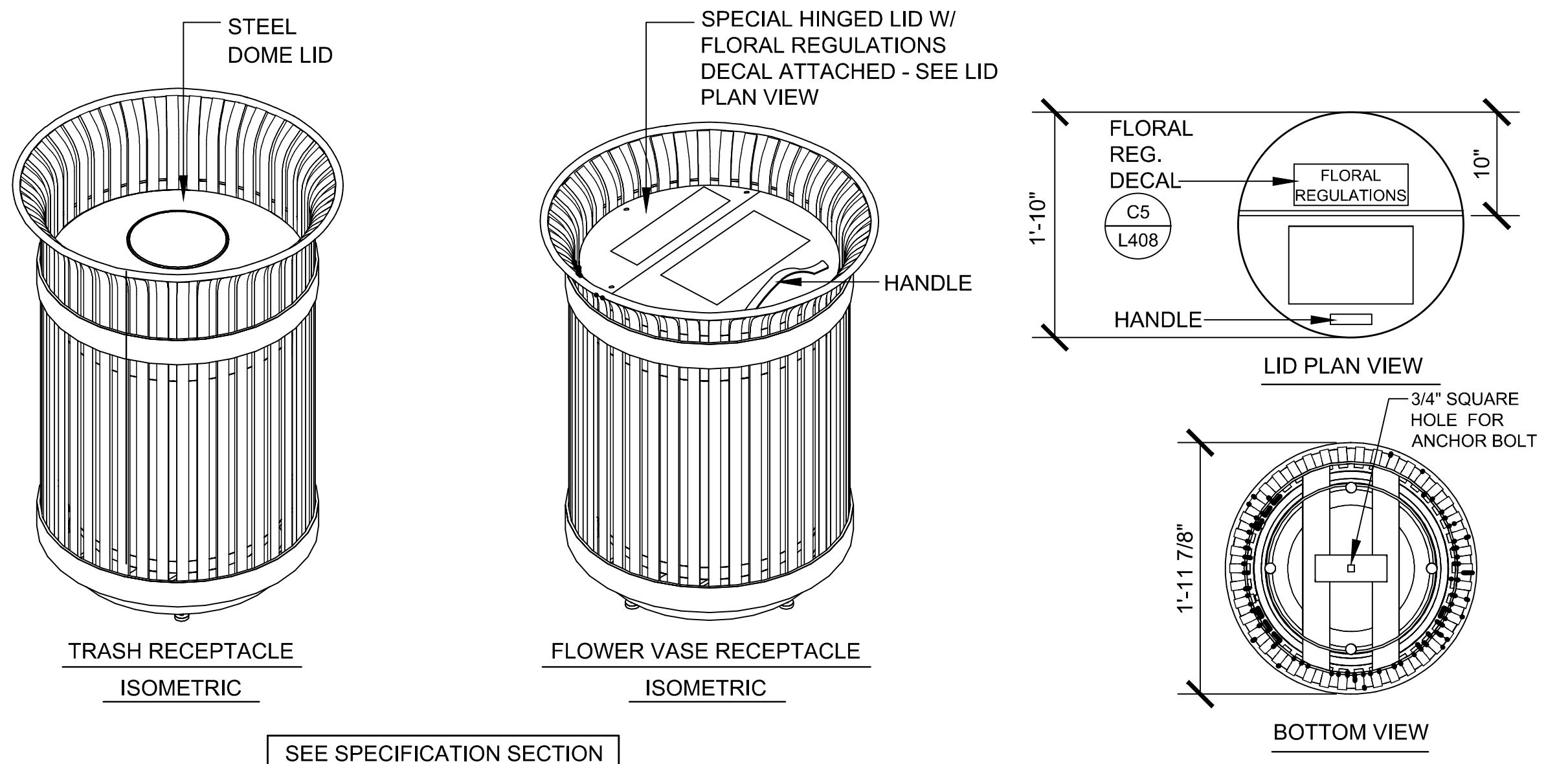
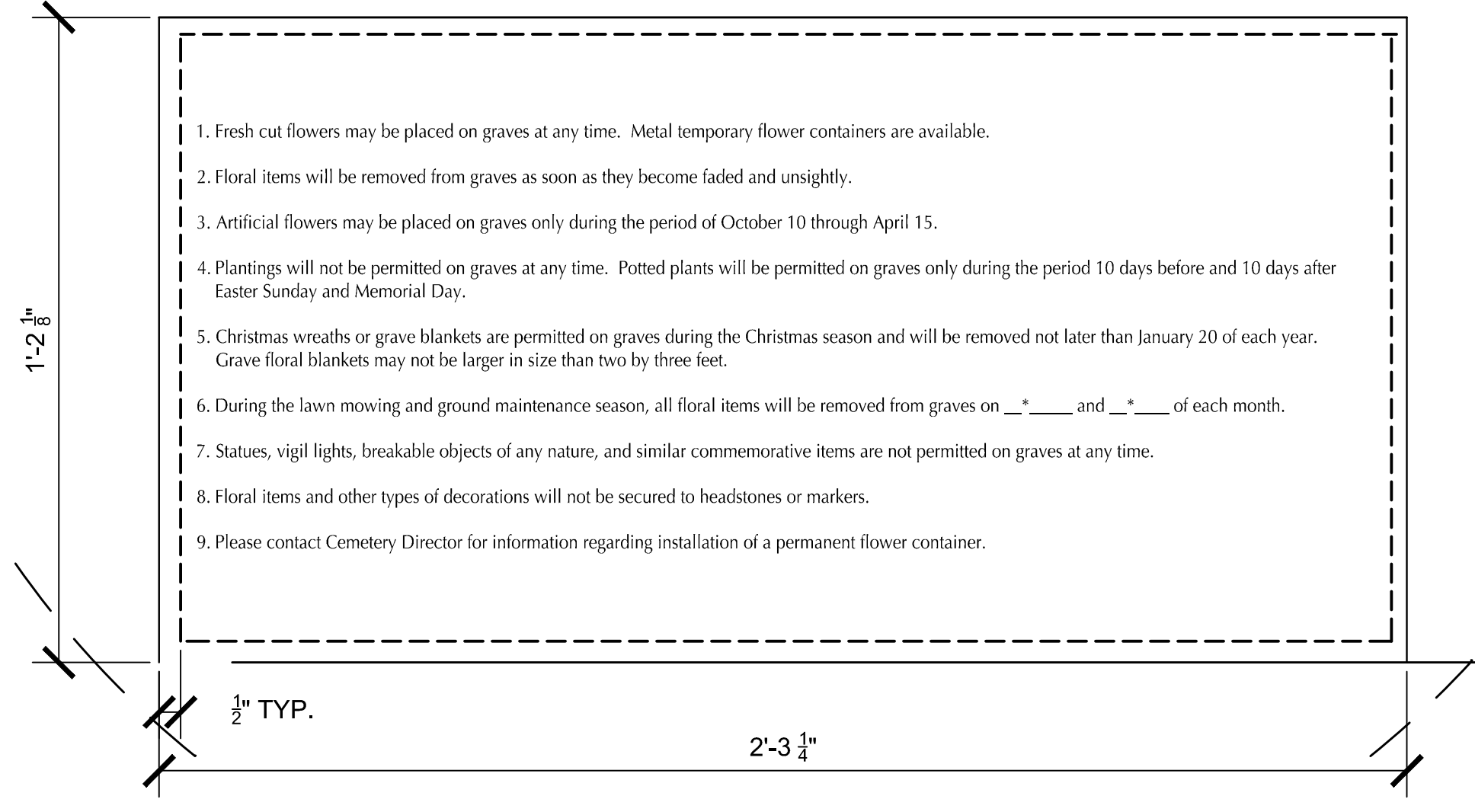
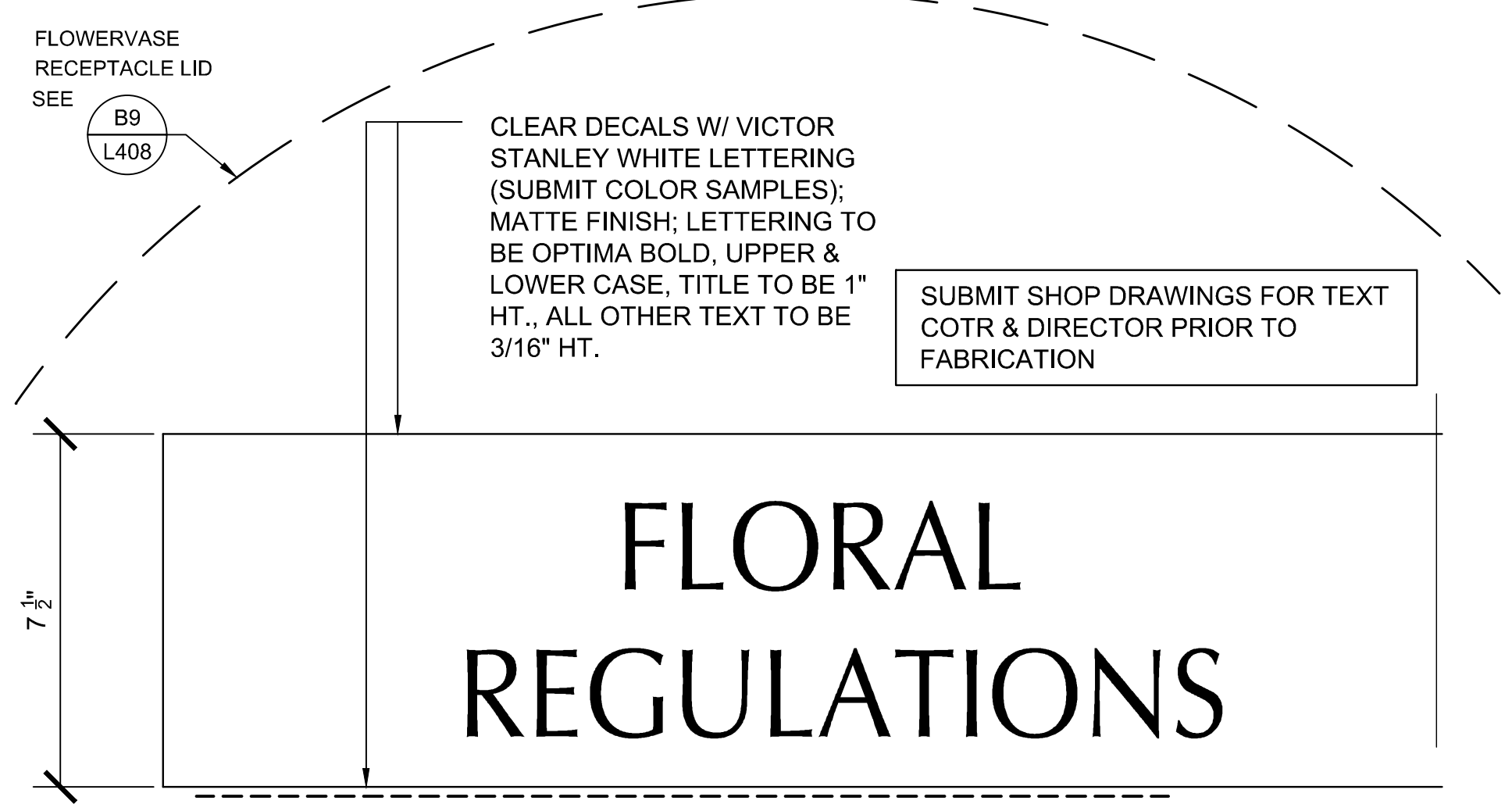
three inches = one foot
 one and one half inches = one foot
 one inch = one foot
 three quarters inch = one foot
 one half inch = one foot
 three eighths inch = one foot
 one quarter inch = one foot
 one eighth inch = one foot



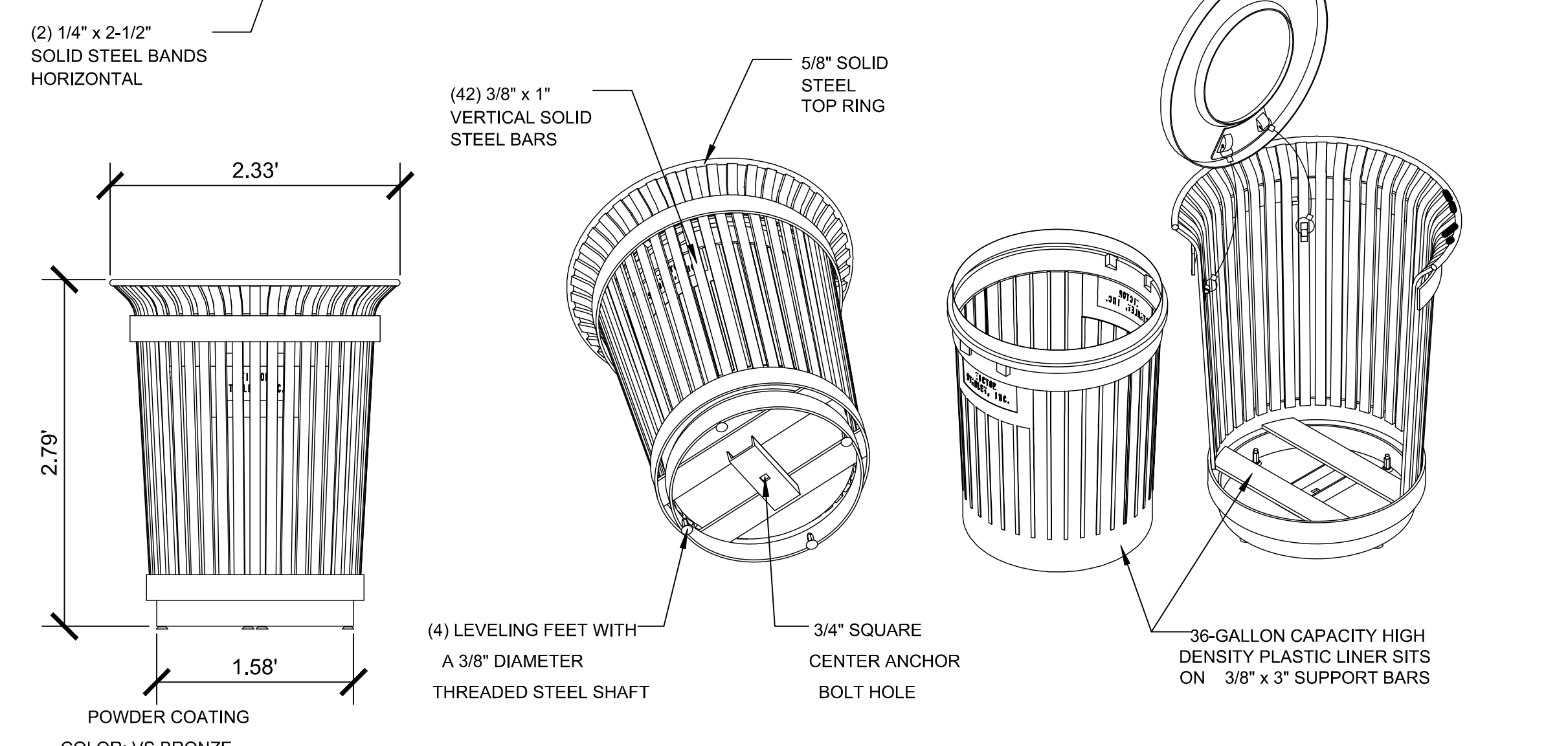
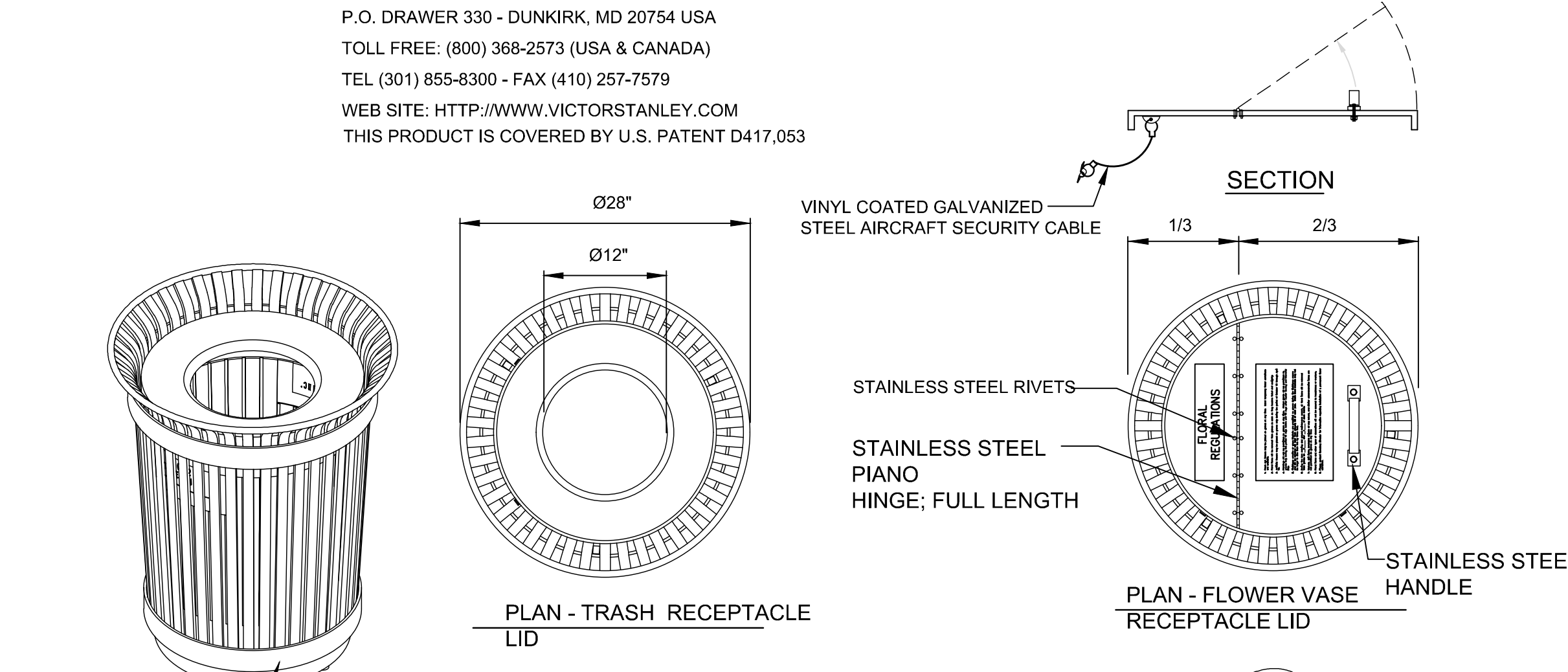
FRONT ELEVATION



PLAN VIEW



SEE SPECIFICATION SECTION 32 30 00 FOR TRASH AND FLOWER VASE RECEPTACLES



SECURITY
 LID IS SECURED WITH VINYL COATED GALVANIZED STEEL AIRCRAFT CABLE. CABLE IS LOOPED AROUND ATTACHMENT BRACKETS AND CRIMPED IN PLACE.

LIDS
 1. STANDARD WITH TAPERED FORMED LID (AS SHOWN).
 2. PROVIDE HINGED SOLID COVER LID WITH HANDLE. LID HINGE TO BE PLACED A 1/3 CHORD POSITION ON LID. HINGE TO BE STAINLESS STEEL PIANO STYLE. PROVIDE SS HANDLE.

NOTES
 1. DRAWING NOT TO SCALE. DO NOT SCALE DRAWINGS.
 2. ALL FABRICATED METAL COMPONENTS ARE STEEL SHOTBLASTED, ETCHED, PHOSPHATIZED, PREHEATED, AND ELECTROSTATICALLY POWDER-COATED WITH T.G.I.C. POLYESTER POWDER COATINGS. PRODUCTS ARE FULLY CLEANED AND PRETREATED, PREHEATED AND COATED WHILE HOT TO FILL CREVICES AND BUILD COATING FILM. COATED PARTS ARE THEN FULLY CURED TO COATING MANUFACTURER'S SPECIFICATIONS. THE THICKNESS OF THE RESULTING FINISH COAT AVERAGES 8-10 MILS. (200-250 MICRONS).
 3. PRODUCT MUST BE PERMANENTLY AFFIXED TO THE GROUND SLAB AT ALL FOUR LEGS.
 4. STAINLESS STEEL ANCHOR BOLTS TO BE PROVIDED BY CONTRACTOR
 5. HOT DIP GALVANIZE BEFORE POWDER COATING. SEE WRITTEN SPECIFICATIONS FOR DETAILS.
 6. ALL SPECIFICATIONS ARE SUBJECT TO CHANGE. CONTACT MANUFACTURER FOR DETAILS.
 7. THIS PRODUCT IS SHIPPED FULLY ASSEMBLED.

Revisions	Date

CONSULTANTS:

Terracon
 Consulting Engineers and Scientists
 110 7th St, Norfolk
 Norfolk, VA 23502
 757-261-1888
 1 (800) 443-6302

SWINBERGER SURVEYING COMPANY, INC.

PEAKS TO PLAINS DESIGN
 404 W. NORTH 31ST STREET, SUITE 405
 BRIDGES, MONTANA 59102
 (406) 294-9100 | (406) 294-9070 FAX
 WWW.PEAKSTOPAINS.COM

Aqua Engineering Inc.
 375 E. Woodloch Street, Building 200
 Fort Collins, CO 80526-2196
 970-225-0200
 970-225-0202
 www.aquaengineering.com

Albertson Engineering Inc.
 3202 West Main
 Suite C
 Rapid City, South Dakota 57702
 phone: 605.343.9608 fax: 605.341.7395

REGISTERED PROFESSIONAL ENGINEER
 SESS. NO. 123456
CASSANDRA L. ZWART
 SOUTH DAKOTA
 7/22/16

ARCHITECT/ENGINEERS:

FOURFRONT DESIGN INC.
 517 7th street
 rapid city sd 57701
 p 605.342.9470
 f 605.342.2377
 www.4front.biz

Drawing Title	FLORAL WATERING STATION DETAILS
Approved Project Director	

Project Title	SALISBURY NATIONAL CEMETERY GRAVESITE EXPANSION
Project Number	876CM3021
Building Number	N/A
Location	SALISBURY NATIONAL CEMETERY SALISBURY, NC
Date	7/22/16
Checked	CZ
Drawn	JM
Drawing Number	C-506
Dwg. 28 of 63	

BID DOCUMENTS

NCA DESIGN AND CONSTRUCTION SERVICE

Department of Veterans Affairs