

three inches = one foot
one and one half inches = one foot
one inch = one foot
one inch = one foot
three quarters inch = one foot
one half inch = one foot
one half inch = one foot
three eighths inch = one foot
one quarter inch = one foot
one eighth inch = one foot

GENERAL CONSTRUCTION SEQUENCE

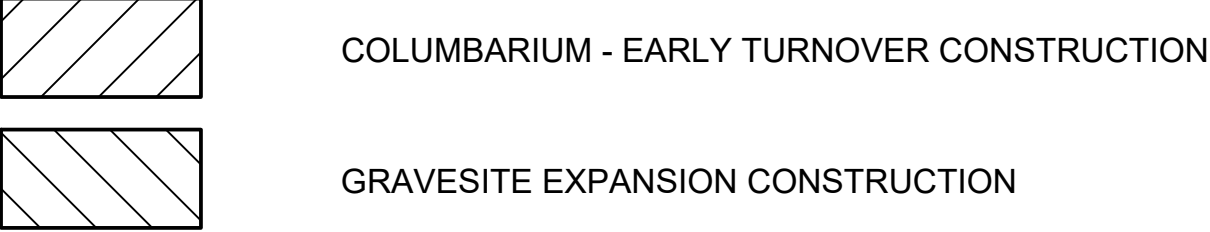
1. OBTAIN AND PROPERLY DISPLAY ALL REQUIRED PERMITTING PRIOR TO BEGINNING ANY CONSTRUCTION RELATED ACTIVITIES. PERMITTING MAY INCLUDE, BUT IS NOT LIMITED TO, NPDES, U.S. ARMY CORPS OF ENGINEERS (USACE) AND CITY OF SALISBURY FLOODPLAIN. CITY OF SALISBURY FLOODPLAIN PERMIT #FDP-2016-2 HAS BEEN OBTAINED BY THE OWNER FOR THIS PROJECT. THE ENGINEER IS OBTAINING USACE NATIONWIDE PERMITTING. THE PERMIT IS EXPECTED TO BE AVAILABLE AT THE TIME OF BIDDING.
2. SCHEDULE A PRE-CONSTRUCTION CONFERENCE WITH THE CONTRACTING OFFICERS REPRESENTATIVE TO DISCUSS ALL ELEMENTS OF SITEWORK. MEETING SHALL BE SCHEDULED A MINIMUM OF 72 HOURS IN ADVANCE OF ANY WORK.
3. CONSTRUCTION ACCESS VIA MAIN CEMETERY ENTRANCE IS NOT ALLOWED. ACCESS SHALL BE FROM BRENNER DRIVE / HEDRICK STREET.
4. INSTALL CONSTRUCTION SITE SIGN AND SAFETY SIGN AT LOCATION INDICATED ON C-101. INSTALL JOB TRAILER, INCLUDING ALL ASSOCIATED UTILITIES AND TEMPORARY TOILET FACILITIES.
5. PRIOR TO BEGINNING ANY SITEWORK, SECURE LAYDOWN AND STAGING AREA AND SITE WITH CONSTRUCTION FENCING AS SHOWN ON C-101 AND INSTALL MINIMUM EROSION AND SEDIMENT CONTROL MEASURES INCLUDING CONSTRUCTION ENTRANCE, SILT FENCE, SEDIMENT TRAPS AND INLET PROTECTION PER C-101.
6. CONTRACTOR SHALL COORDINATE STAGING AND STORAGE WITHIN OVERALL CONSTRUCTION AREA LIMITS.
7. COLUMBARIUM (EARLY TURNOVER):
 - a. COLUMBARIUM WORK SHALL BE FULLY COMPLETE WITH WORK AREA RETURNED TO OWNER A MAXIMUM OF 120 CALENDAR DAYS AFTER COLUMBARIUM WORK START DATE. PRESERVE AND PROTECT EXISTING COLUMBARIUM, CONCRETE WALKS, RETAINING WALLS, SITE FURNISHINGS AND VEGETATION TO REMAIN. CONTRACTOR IS RESPONSIBLE FOR REPLACEMENT OF DAMAGED MATERIALS INCLUDING, BUT NOT LIMITED TO, WALKS, STRUCTURES, ROADWAYS, SITE FURNISHINGS AND LANDSCAPING, AT NO COST TO THE OWNER.
 - b. CONSTRUCTION ACCESS TO COLUMBARIUM IS ALLOWED ALONG THE MAIN CEMETERY ACCESS DRIVE FROM THE ADMINISTRATION DRIVE. ACCESS VIA MAIN CEMETERY ENTRANCE IS NOT ALLOWED.
 - c. INSTALL CONSTRUCTION FENCING AND EROSION AND SEDIMENT CONTROL MEASURES.
 - d. STORE ITEMS TO BE RE-USED.
 - e. CONDUCT CLEARING AND GRUBBING OPERATIONS WITHIN EXISTING COLUMBARIUM. REMOVE DESIGNATED TREES. REMOVE AND STOCKPILE TOPSOILS. CONDUCT IRRIGATION DEMOLITION (I-101).
 - f. CONSTRUCT NEW COLUMBARIA, WORK TO INCLUDE FOOTING CONSTRUCTION, CMU END PIERS, PLACEMENT OF NICHE WALLS AND INSTALLATION OF BRICK AND STONE VENEERS AND VETERANS AFFAIRS (VA) SUPPLIED NICHE COVERS.
 - g. INSTALL NEW STORM DRAINAGE, IRRIGATION AND PAVING SURFACES.
 - h. ONCE ALL STAGES OF COLUMBARIUM WORK HAVE BEEN COMPLETED, STABILIZE ALL DISTURBED AREAS BEFORE TURNOVER TO OWNER. RETURN USE OF EXISTING COLUMBARIUM TO OWNER A MAXIMUM OF 120 CALENDAR DAYS AFTER COLUMBARIUM WORK START DATE.
8. GRAVESITE EXPANSION:
 - a. GRAVESITE EXPANSION WORK MAY BE DONE CONCURRENTLY WITH COLUMBARIUM WORK.
 - b. AT NO TIME MAY VEHICLES TRACK INTO THE WATERS OF TRIBUTARY. ALL TRAFFIC SHALL UTILIZE EXISTING CULVERT CROSSING FOR ACCESS ACROSS TRIBUTARY. DO NOT REMOVE EXISTING CROSSING PRIOR TO COMPLETION OF NEW CROSSING.
 - c. EMPLOYEE PARKING MAY BE CLOSED A MAXIMUM OF THIRTY CONSECUTIVE CALENDAR DAYS. EXPEDITE ROAD CONNECTION TO EXISTING PARKING TO MINIMIZE DISRUPTION TO CEMETERY ACTIVITIES. PROVIDE AGGREGATE STONE TEMPORARY EMPLOYEE PARKING AS SHOWN ON THE PLAN, AND RESTORE TO ORIGINAL CONDITION AFTER USE IS DISCONTINUED.
 - d. INSTALL CONSTRUCTION FENCING AND PHASE I EROSION AND SEDIMENT CONTROL MEASURES AS LISTED ON SHEET C-101 INCLUDING CONSTRUCTION ENTRANCE, SEDIMENT TRAPS, SILT FENCE AND INLET PROTECTION.
 - e. CONDUCT CLEARING AND GRUBBING OPERATIONS WITHIN WORK LIMITS. REMOVE DESIGNATED TREES. REMOVE AND STOCKPILE TOPSOILS. CONDUCT MASS GRADING OPERATIONS FOR EXPANSION AREA. STORE ITEMS TO BE RE-USED.
 - f. ROCK REMOVAL AS REQUIRED FOR NEW WORK AND WITHIN TOLERANCES ALLOWED PER SPECIFICATION. QUANTITIES SHALL BE VERIFIED PER SPECIFICATIONS.
 - g. REMEDIATE SOILS AS REQUIRED TO PROVIDE A FIRM SUBGRADE FOR IMPROVEMENTS PER THE GEOTECHNICAL ENGINEERING REPORT AND GEOTECHNICAL ENGINEER'S ON-SITE REPRESENTATIVE DURING CONSTRUCTION. QUANTITIES SHALL BE VERIFIED PER SPECIFICATIONS.
 - h. CONSTRUCT NEW CULVERT CROSSING.
 - i. BEGIN ROADWAY CONSTRUCTION, INCLUDING ROUGH GRADING AND PLACEMENT OF BASE STONE, CURB AND GUTTER AND STORM DRAINAGE.
 - j. INSTALL PHASE TWO EROSION AND SEDIMENT CONTROL MEASURES AS SOON AS PRACTICAL AND AS WORK ALLOWS.
 - k. INSTALL UNDERDRAINAGE FOR CRYPT FIELDS, PRE-PLACED CRYPTS, STORM DRAINAGE AND IRRIGATION SYSTEM.
 - l. CONSTRUCT RETAINING WALL.
 - m. INCORPORATE ADD ALTERNATE WORK, IF ACCEPTED, INTO THE CONSTRUCTION AS APPROPRIATE.
 - n. FINE GRADE ALL LAWN AREAS AND BURIAL AREAS. INSTALL NEW SURFACE PAVING.
 - o. INSTALL SITE SIGNAGE.
 - p. PLACE ALL PLANTINGS, INCLUDING RESTORED RIPARIAN BUFFER, AND SEED/SOD. INSTALL LANDSCAPE EDGING.
9. UPON AUTHORIZATION FROM THE CONTRACTING OFFICER'S REPRESENTATIVE (COR) REMOVE ALL EROSION AND SEDIMENT CONTROL MEASURES AND TEMPORARY SECURITY MEASURES.
10. DEMOBILIZE.

LEGEND

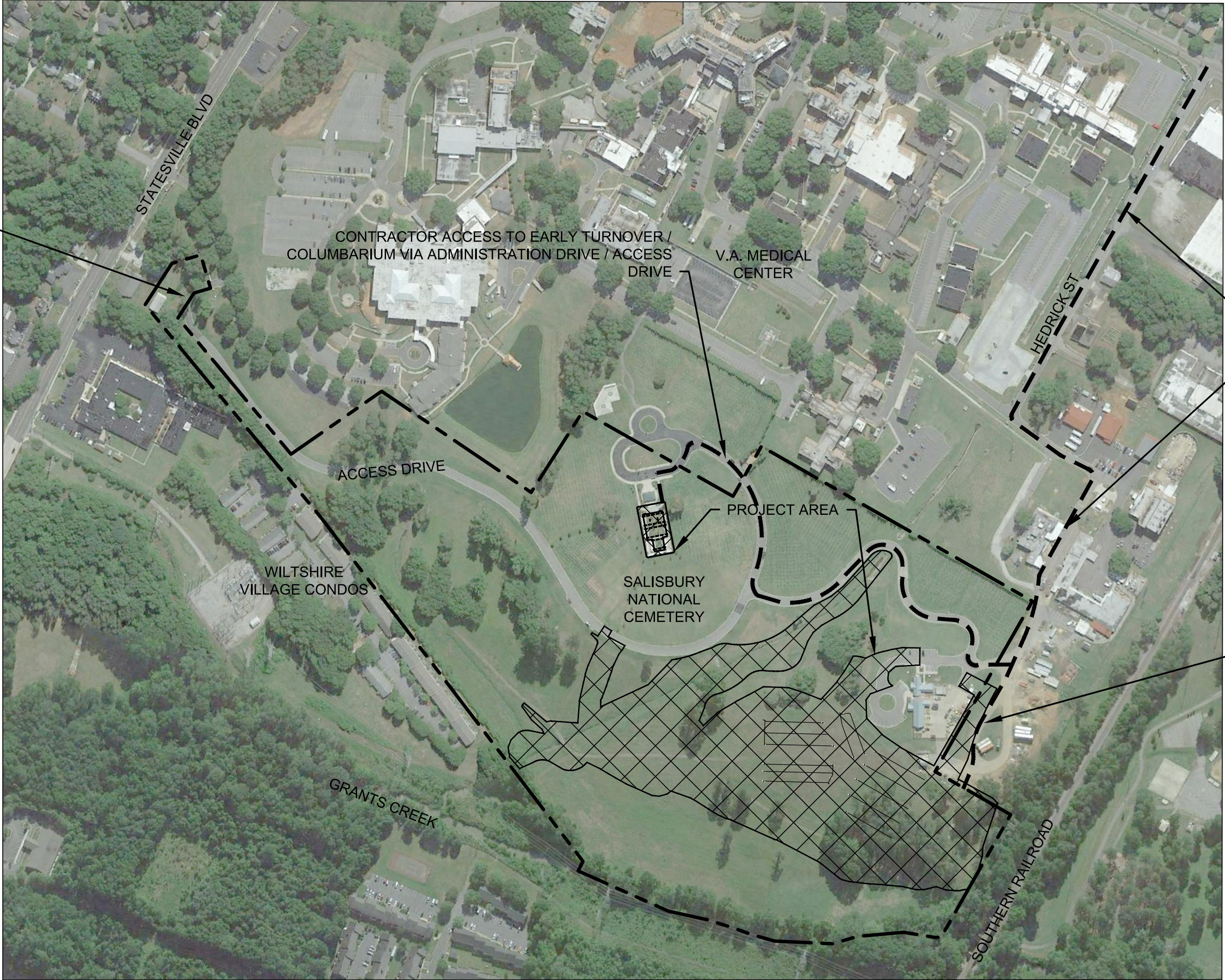


OVERALL CONSTRUCTION AREA

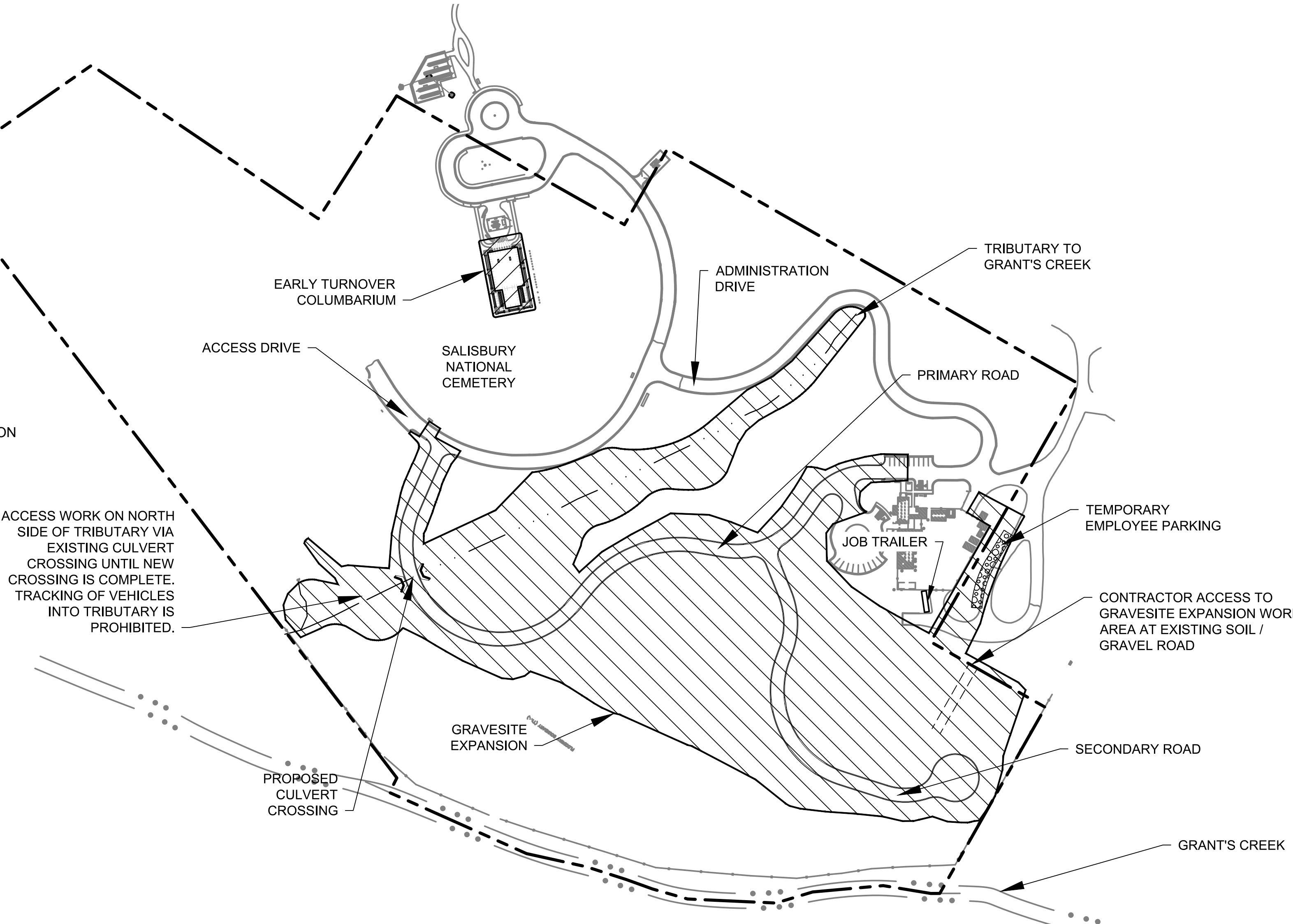
LEGEND



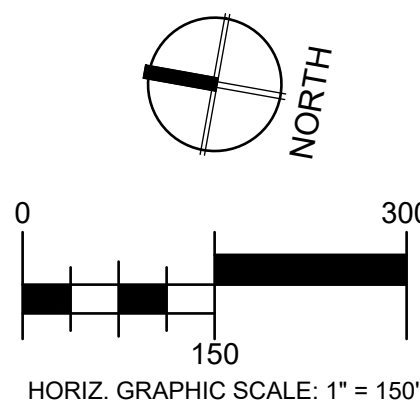
MAIN CEMETERY ENTRANCE NOT AVAILABLE FOR CONTRACTOR USE.



CONSTRUCTION ACCESS MAP
N.T.S.



WORK AREA MAP
SCALE: 1" = 150'



BID DOCUMENTS

Revisions	Date

CONSULTANTS:

Terracon
Consulting Engineers and Scientists
110 12th St. North
Birmingham, AL 35203
P 205.944.1088
F 205.944.0302

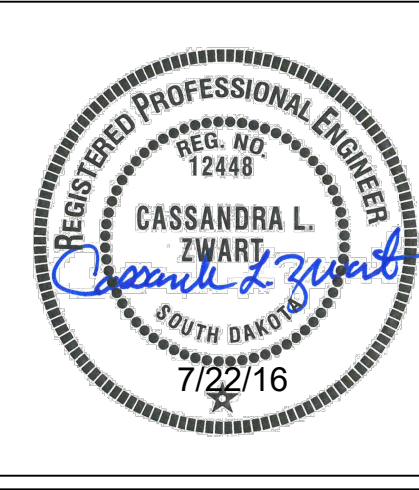


PEAKS TO PLAINS DESIGN
LANDSCAPE ARCHITECTS
404 NORTH 31ST STREET, SUITE 405
BILLINGS, MONTANA 59101
(406) 294-9499 • (406) 294-9470 FAX
WWW.PEAKSTOPLAINS.COM

Aqua Engineering Inc.
Innovative Water Solutions
301 E. Henderson Road, Building 240
Fort Collins, CO 80526-2198
(970) 225-8888 office
(970) 225-8880 fax
www.aquaengineering.com

3202 West Main
Suite C
Rapid City, South Dakota 57702
phone: 605.343.9808 fax: 605.341.7395

Albertson Engineering Inc.



ARCHITECT/ENGINEERS:

FOURFRONT DESIGN INC.
517 7th street
rapid city sd 57701
p 605.342.9470
f 605.342.2377
www.4front.biz

Drawing Title PHASING AND STAGING PLAN	
Approved Project Director	

Project Title SALISBURY NATIONAL CEMETERY GRAVESITE EXPANSION		
Location SALISBURY NATIONAL CEMETERY SALISBURY, NC		
Date 7/22/16	Checked CZ	Drawn JM

Project Number 876CM3021
Building Number N/A
Drawing Number X-102 Dwg. 3 of 63

NCA DESIGN AND CONSTRUCTION SERVICE

Department of Veterans Affairs