

three inches = one foot
one and one half inches = one foot
one inch = one foot
three quarters inch = one foot
one half inch = one foot
three eighths inch = one foot
one quarter inch = one foot
one eighth inch = one foot

10-1636 VA NCA 10/1/16 1636.044 Salisbury NC Gravestone Expansion Drawings\Civil\Sheet Files\876CM3021-C-303.dwg 7-21-16 01:07:41 PM jmalloy

GENERAL NOTE:
MAXIMUM CROSS-SLOPE OF SIDEWALKS SHALL BE 2%. CONTRACTOR TO VERIFY ALL GRADES AND SLOPES PRIOR TO PLACEMENT.

Revisions	Date

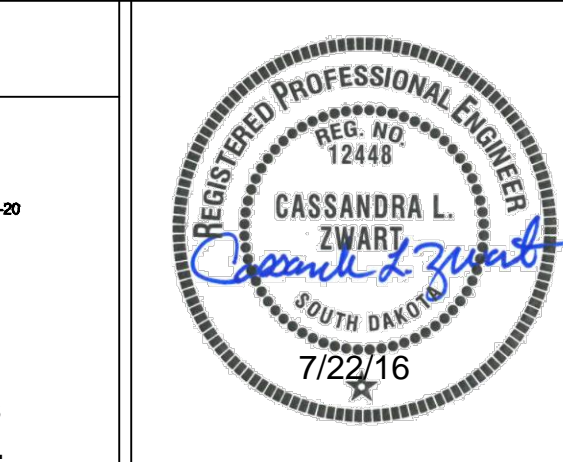
CONSULTANTS:

Terracon
Consulting Engineers and Scientists
110 10th St. North
Birmingham, AL 35203
P 205.988.5500
F 205.988.5502



PEAKS TO PLAINS DESIGN
404 NORTH 51ST STREET, SUITE 405
BRIDGES, MONTANA 59101
(406) 284-8691 • (406) 284-9670 FAX
WWW.PEAKSTOPAINS.COM

Aqua Engineering Inc.
Innovative Water Solutions
375 E. Henderson Road, Building 2-01
Fort Collins, CO 80526-3196
P 970.226.0800
F 970.226.0801
WWW.AQUAENGINEERING.COM



ARCHITECT/ENGINEERS:

FOURFRONT DESIGN INC.
517 7th street
rapid city sd 57701
p 605.342.9470
f 605.342.2377
www.4front.biz

Drawing Title
GRADING AND DRAINAGE PLAN - COLUMBARIUM

Approved Project Director

Project Title
SALISBURY NATIONAL CEMETERY GRAVESITE EXPANSION

Location
SALISBURY NATIONAL CEMETERY
SALISBURY, NC

Date
7/22/16

Project Number
876CM3021

Building Number
N/A

Drawing Number
C-303
Dwg. 18 of 63

NCA DESIGN AND CONSTRUCTION SERVICE

Department of Veterans Affairs

BID DOCUMENTS