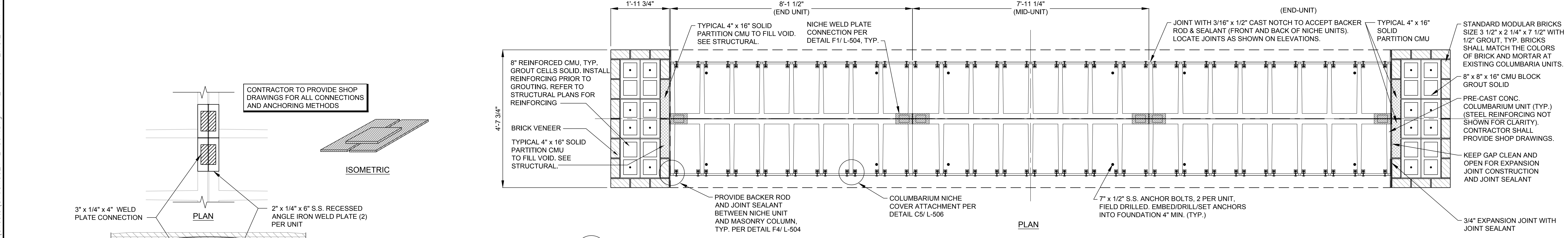
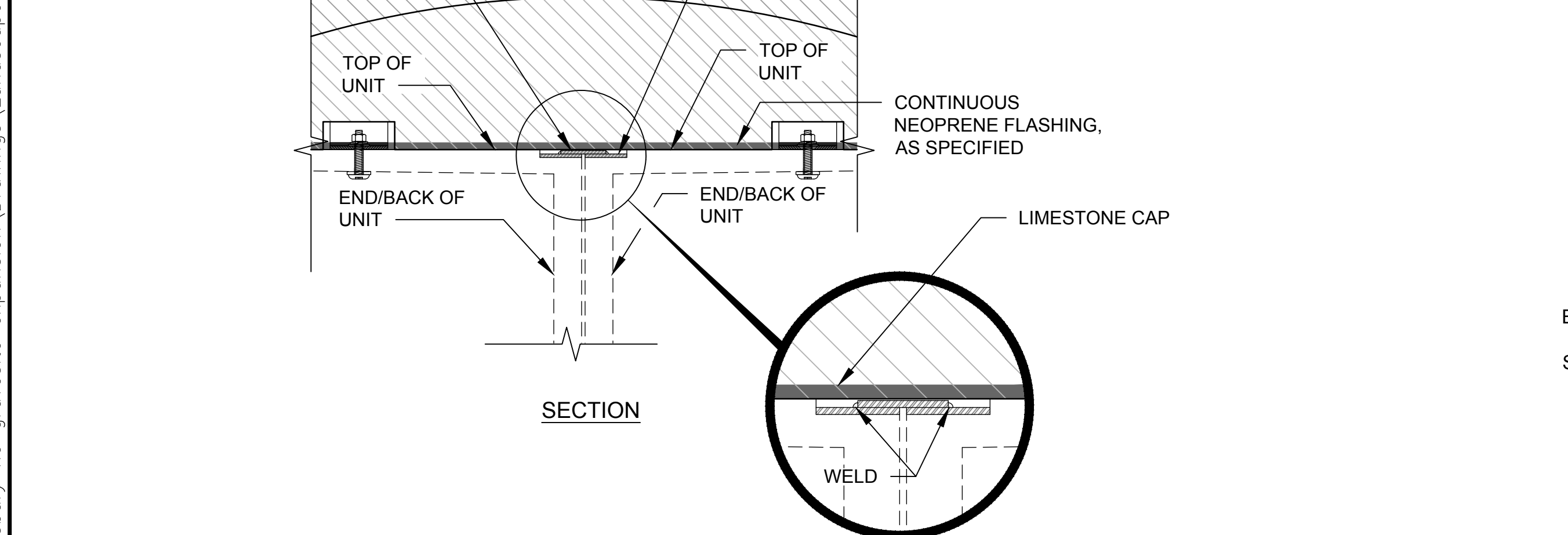


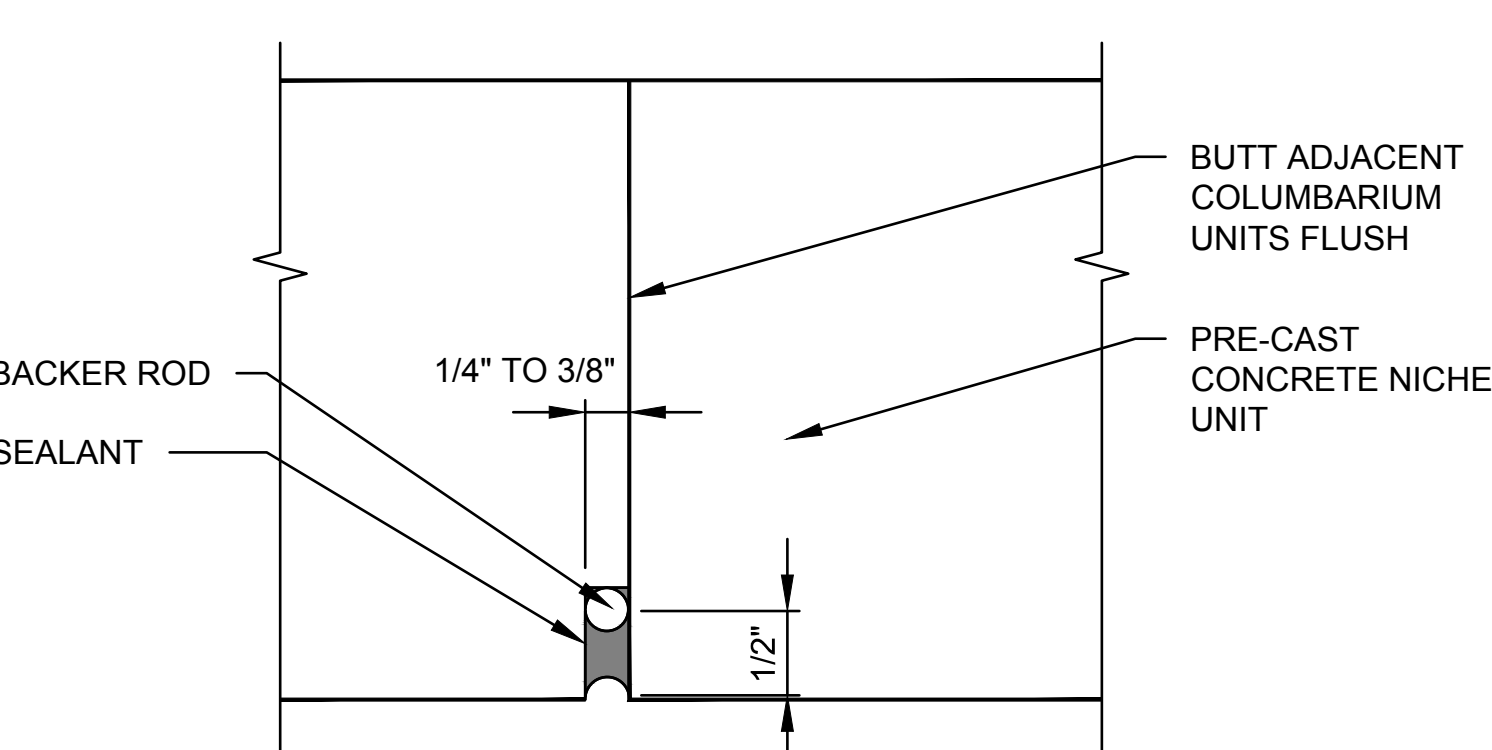
C1 COLUMBARIUM MODULE SECTION/ ELEVATION (5-HIGH DOUBLE SIDED 24 COLUMN UNIT, AS SPECIFIED)
SCALE: 3/4"=1'-0"



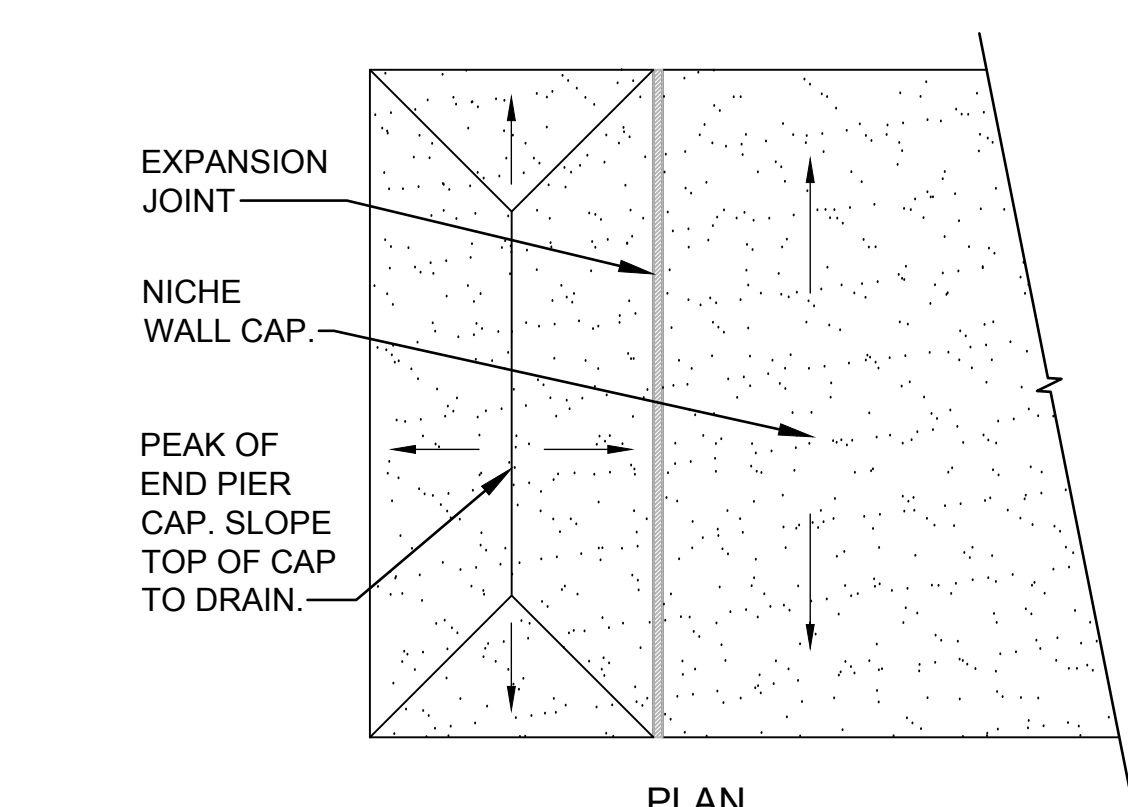
E4 COLUMBARIUM MODULE PLAN
SCALE: 3/4"=1'-0"



F1 NICHE WELD PLATE CONNECTIONS
SCALE: 1 1/2"=1'-0"

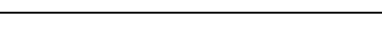
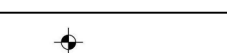
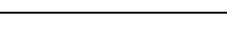
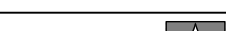
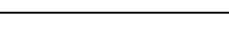





F4 NICHE WALL JOINT ENLARGEMENT DETAIL
NOT TO SCALE



F6 END PIER CAP
NOT TO SCALE

BID DOCUMENTS

		CONSULTANTS:		 110 12th St. North Birmingham, AL 35203 P 205/961-1088 F 205/961-4332		 404 MCNORTH 31ST STREET, SUITE 400 BELLINGHAM, MONTANA 59110 (406) 294-9499 • (406) 294-9470 FAX WWW.PEAKSTOPLAINS.COM		 ANGUS A. PEAKS, P.E., LEED AP 404 MCNORTH 31ST STREET, SUITE 400 BELLINGHAM, MONTANA 59110 (406) 294-9499 • (406) 294-9470 FAX WWW.PEAKSTOPLAINS.COM		 301 E. Henderson Road, Building 240 Fort Collins, CO 80526-2398 P 970/224-8888 F 970/224-8888 www.aquaengineering.com		 3202 West Main Suite C Rapid City, South Dakota 57702 phone 605.343.9808 fax 605.341.7395 Albertson Engineering Inc.				ARCHITECT/ENGINEERS:		 517 7th street rapid city sd 57701 p 605.342.9470 f 605.342.2377 www.4front.biz		Drawing Title COLUMBARIUM DETAILS #1		Project Title SALISBURY NATIONAL CEMETERY GRAVESITE EXPANSION		Project Number 876CM3021		NCA DESIGN AND CONSTRUCTION SERVICE  Department of Veterans Affairs	
												Approved Project Director		Location SALISBURY NATIONAL CEMETERY SALISBURY, NC		Building Number N/A		Drawing Number L-504 Dwg. 51 of 63									
Revisions		Date												Date 7/22/16		Checked EH		Drawn AW									