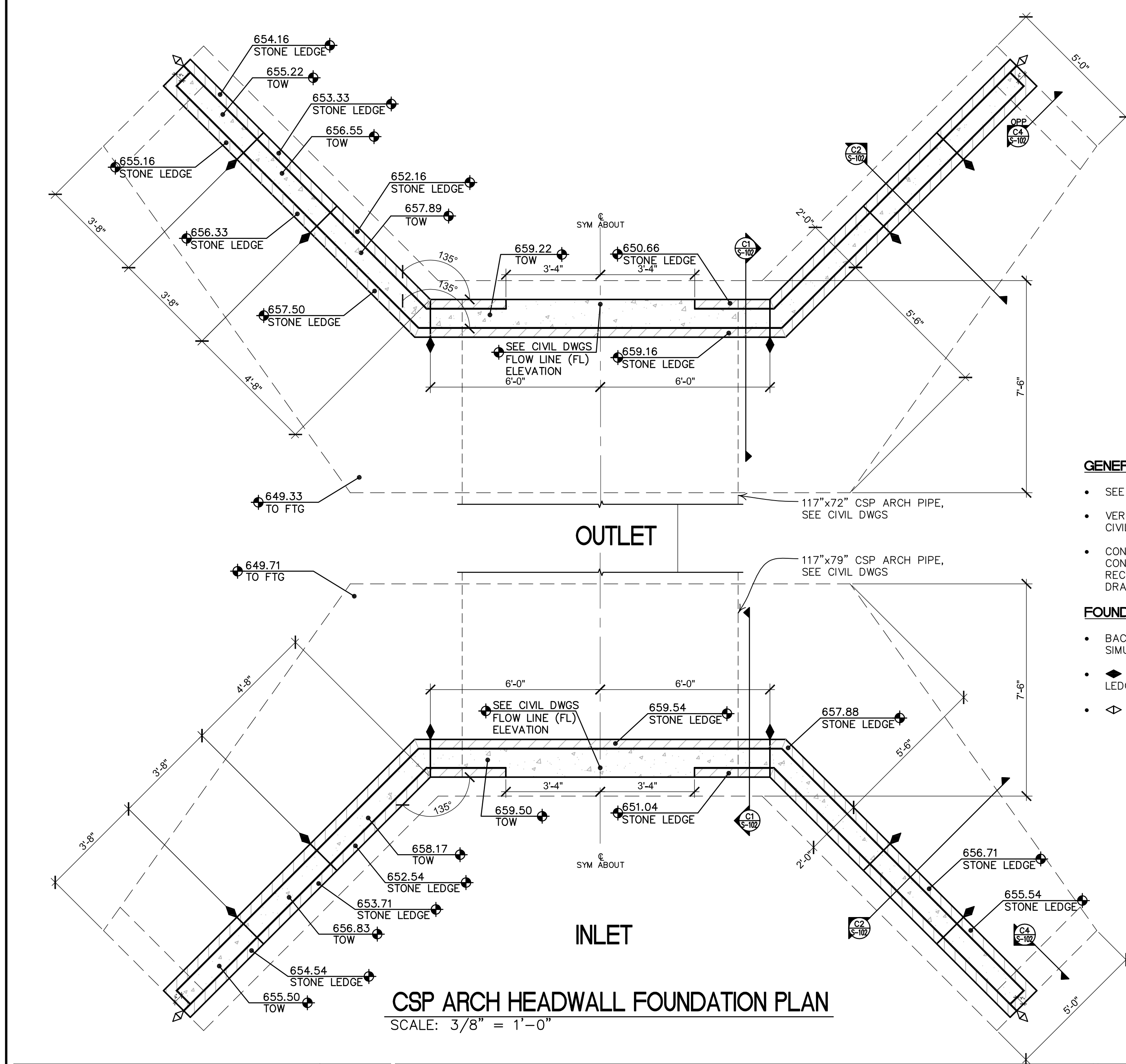
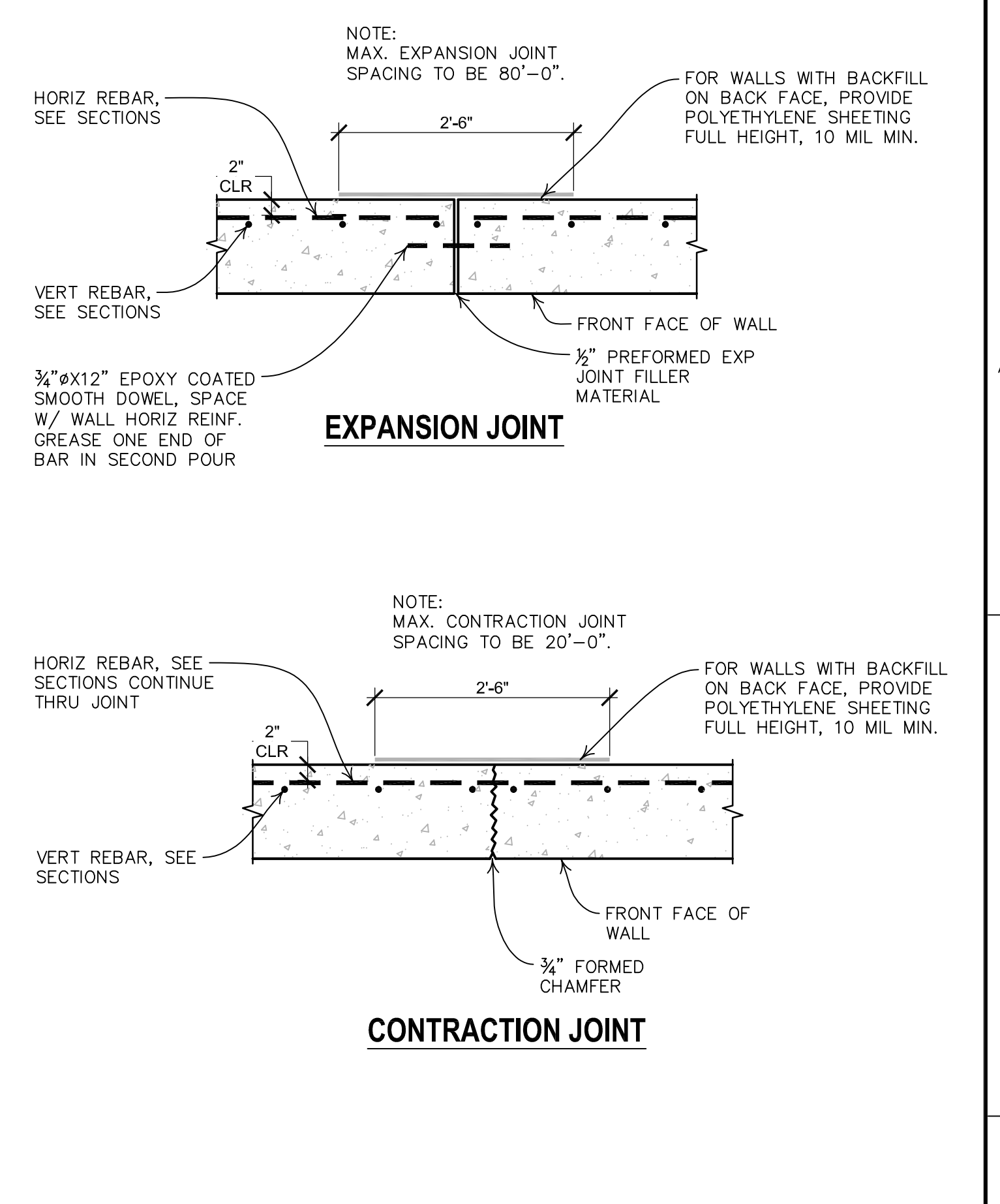
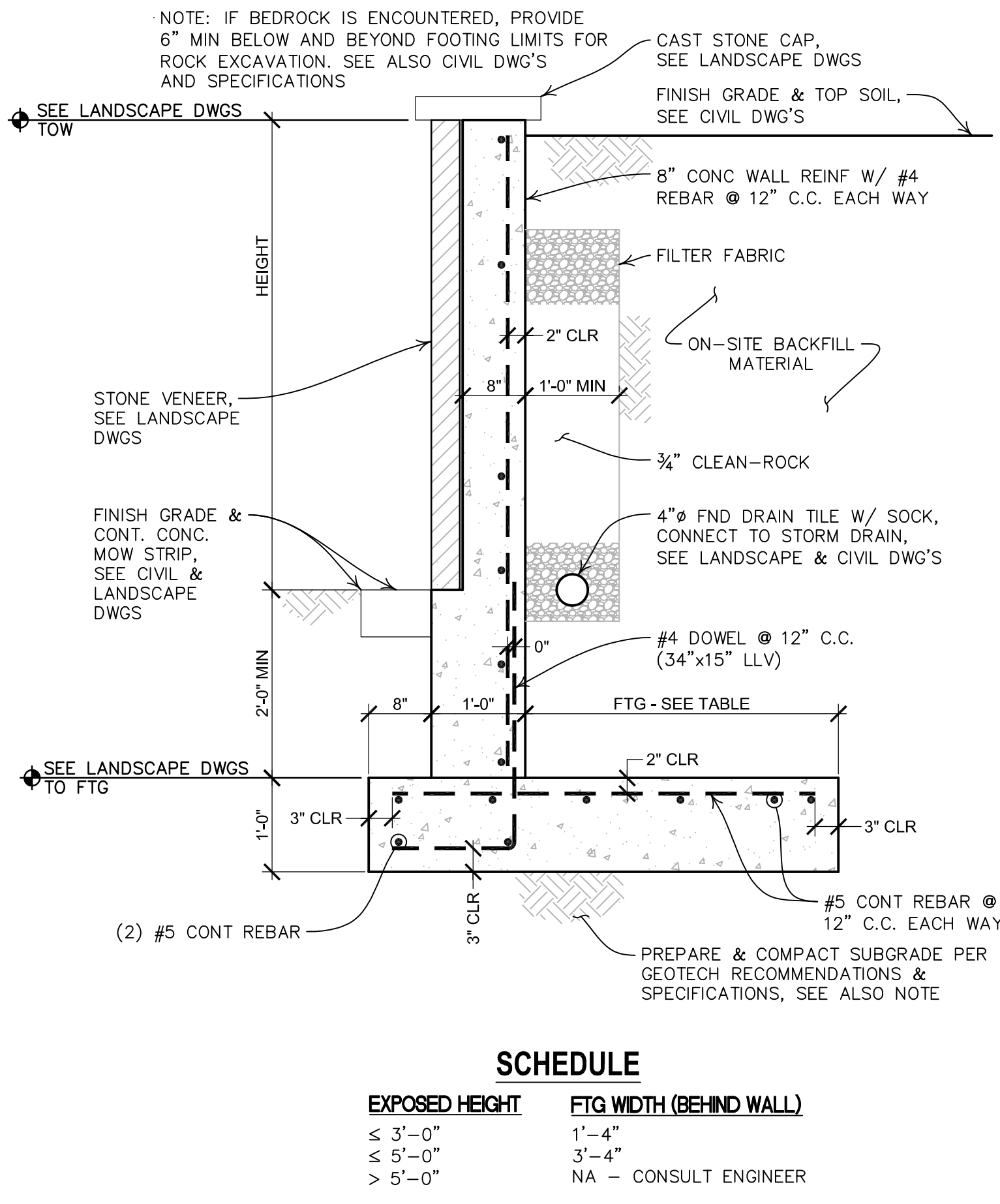
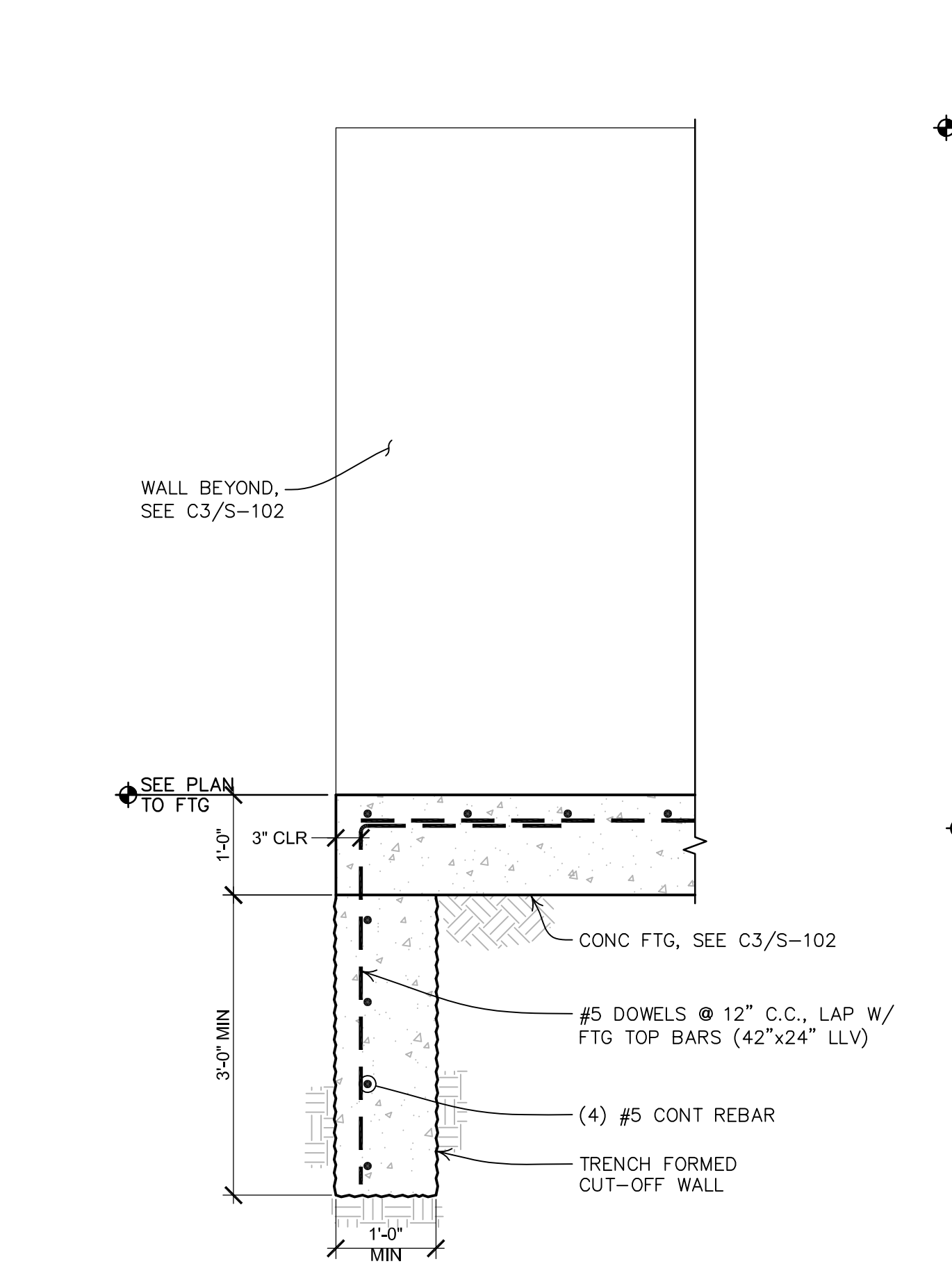
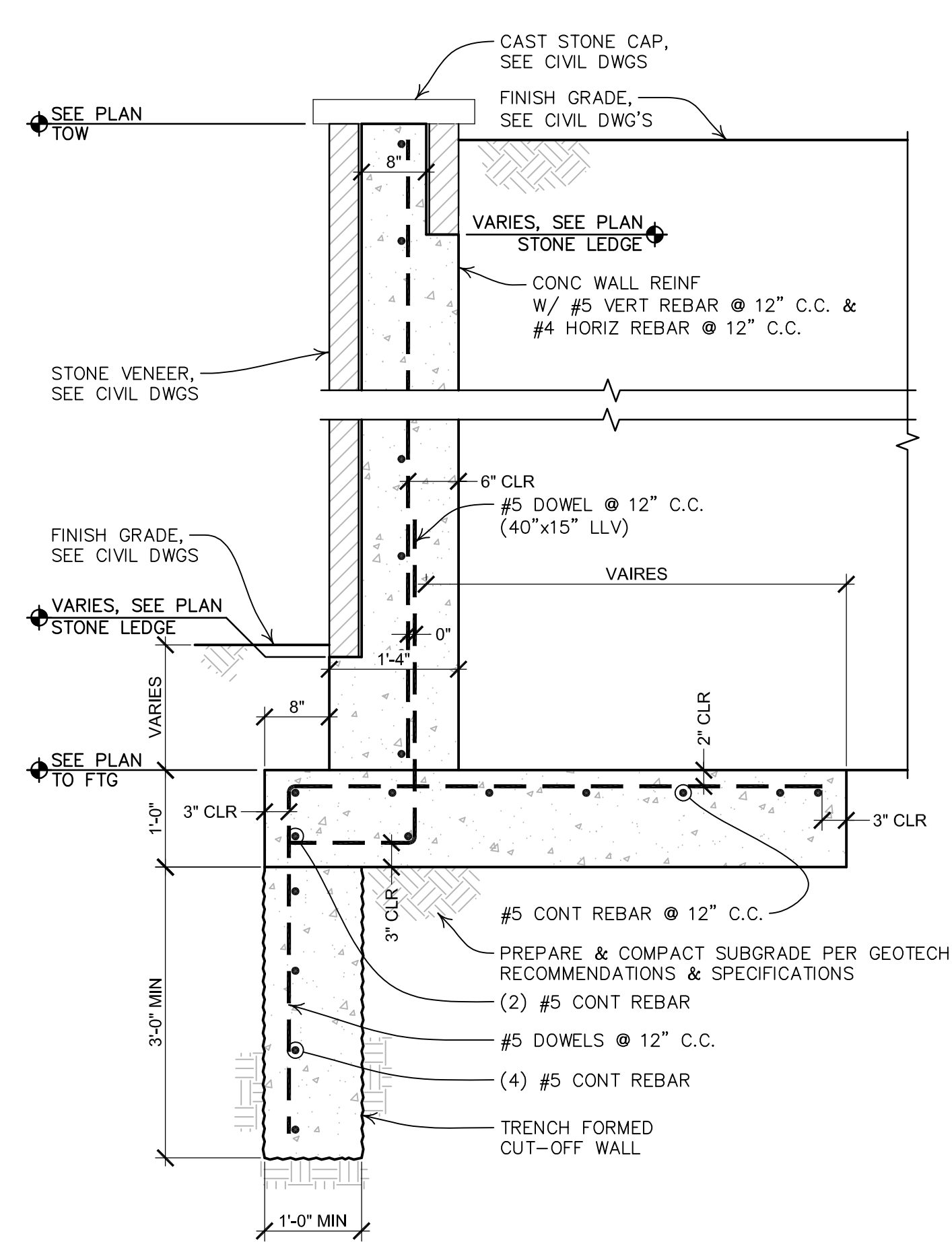
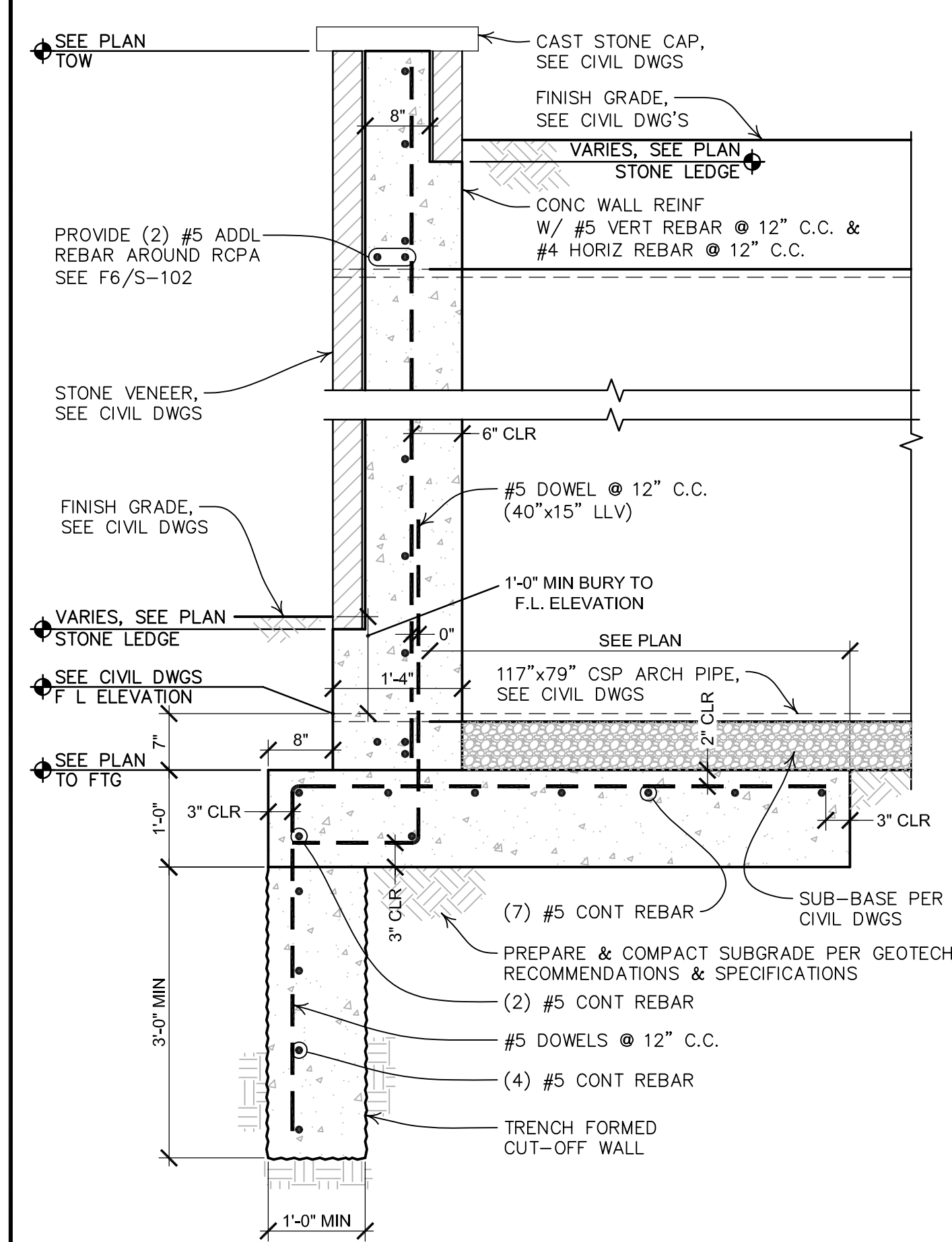
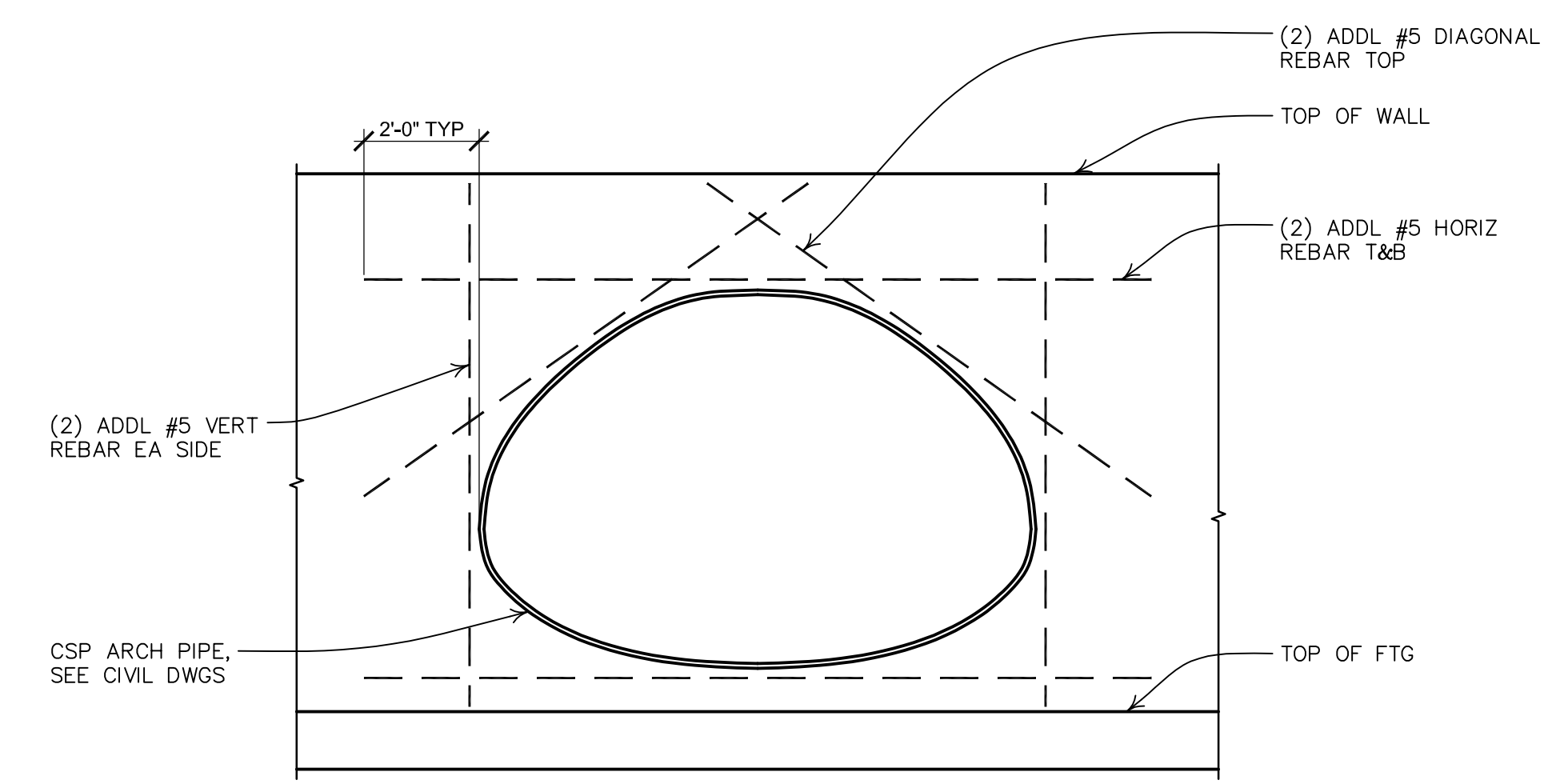


three inches = one foot
one and one half inches = one foot
one inch = one foot
three quarters inch = one foot
one half inch = one foot
three eighths inch = one foot
one quarter inch = one foot
one eighth inch = one foot



- GENERAL PLAN NOTES**
- SEE SHEET S-001 FOR GENERAL STRUCTURAL NOTES.
 - VERIFY ALL DIMENSIONS & ELEVATIONS WITH LANDSCAPE & CIVIL DRAWINGS BEFORE CONSTRUCTION COMMENCES.
 - CONTRACTOR SHALL ANTICIPATE POOR SUBGRADE SOIL CONDITIONS. REMEDIATE SUBGRADE SOILS PER GEOTECH RECOMMENDATIONS AND SPECIFICATIONS. SEE ALSO CIVIL DRAWINGS.
- FOUNDATION PLAN NOTES**
- BACKFILL & COMPACT BOTH SIDES OF FOUNDATION WALLS SIMULTANEOUSLY.
 - ◆ INDICATES STEP IN TOP OF WALL AND TOP OF STONE LEDGE.
 - ◊ INDICATES STEP IN TOP OF STONE LEDGE ONLY.



CONSULTANTS: Consulting Engineers and Scientists 110 10th St. North Birmingham, AL 35203 P: (205) 944-1888 F: (205) 443-5332		 SULLIVAN ENGINEERING SERVICES COMPANY, P.A. 404 NORTH 31ST STREET, SUITE 405 BIRMINGHAM, AL 35203 P: (205) 944-1888 F: (205) 443-5332		 PEAKS TO PLAINS DESIGN 404 NORTH 31ST STREET, SUITE 405 BIRMINGHAM, AL 35203 P: (205) 944-1888 F: (205) 443-5332		 Aqua Engineering Innovative Water Solutions 375 E. Hensworth Street, Building 2-01 Fort Collins, CO 80526-2168 P: (970) 226-5650 F: (970) 226-5650 www.aquaengineering.com		 ALBERTSON ENGINEERING INC. 6041E SOUTH PARK SOUTH PARK, CO 80901		ARCHITECT/ENGINEERS: 41 517 7th street rapid city sd 57701 P: 605.342.9470 F: 605.342.2377 www.4front.biz		Drawing Title CSP ARCH HEADWALL FOUNDATION PLAN, SECTIONS + RTNG WALL SECTIONS		Project Title SALISBURY NATIONAL CEMETERY GRAVESITE EXPANSION		Project Number 876CM3021		NCA DESIGN AND CONSTRUCTION SERVICE 	
Revisions		Date		Approved Project Director		Location SALISBURY NATIONAL CEMETERY SALISBURY, NC		Date 7/22/16		Checked DEL		Drawn JRK		Drawing Number S-102 Dwg. 56 of 63					