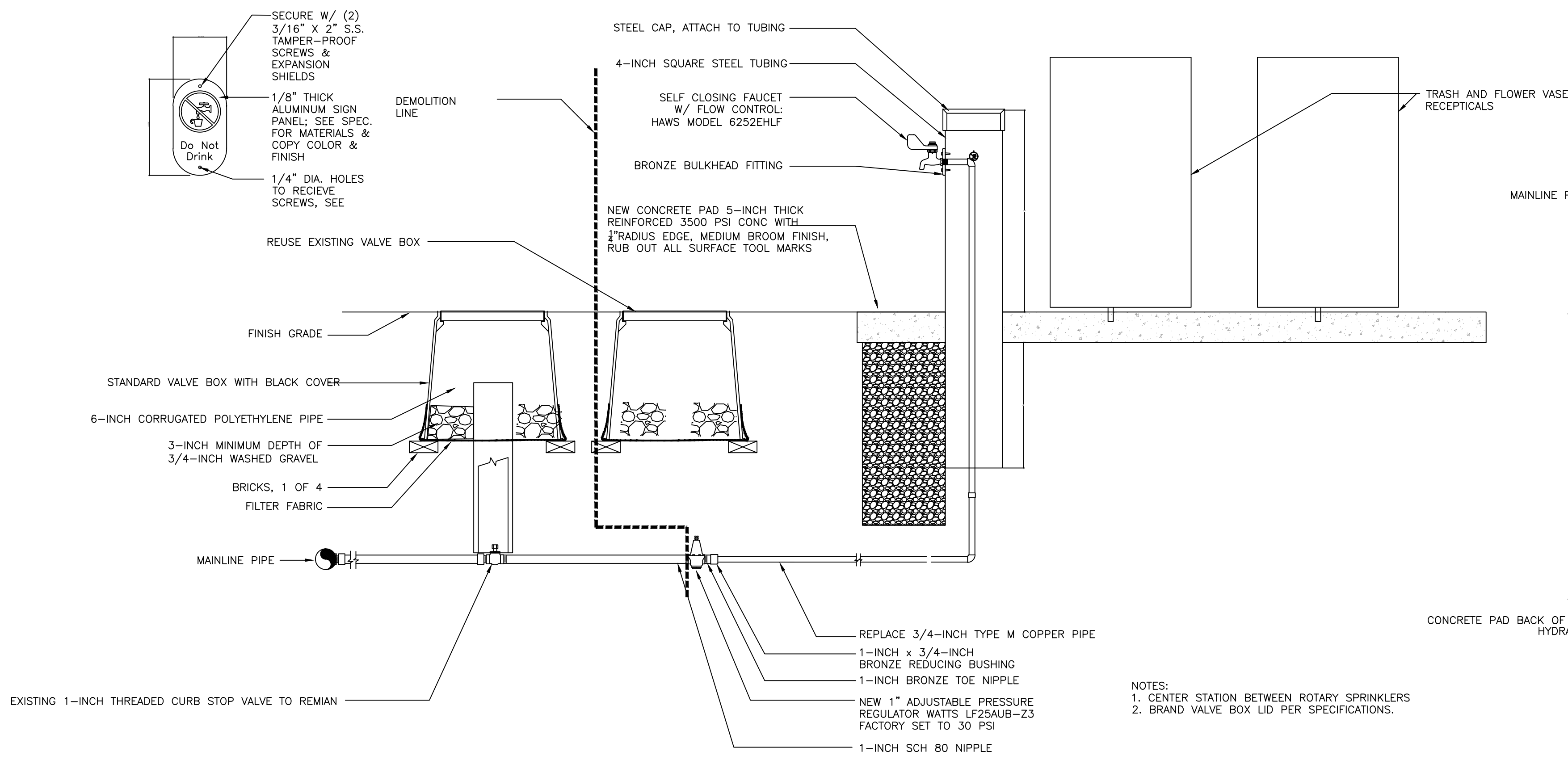
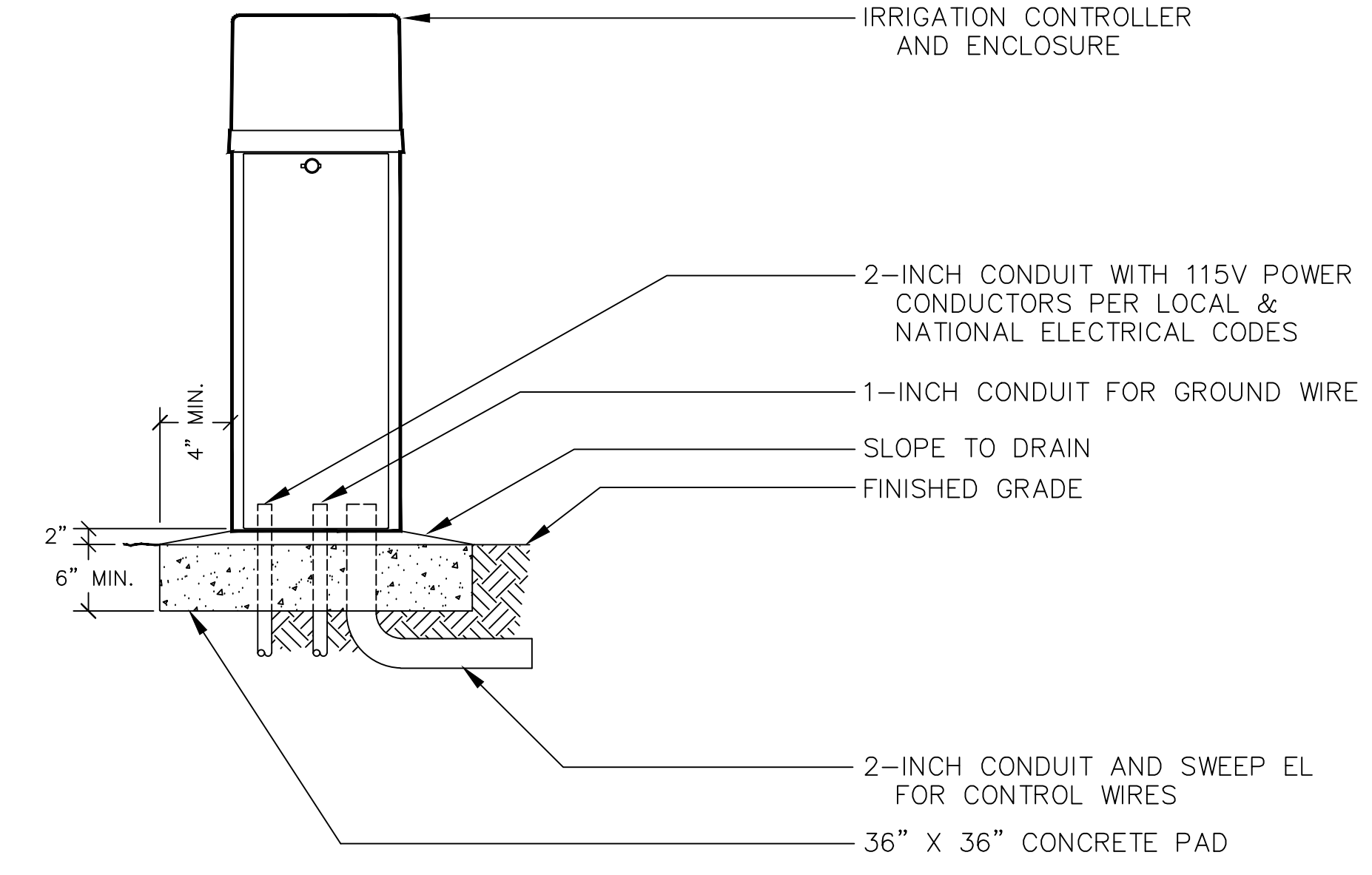
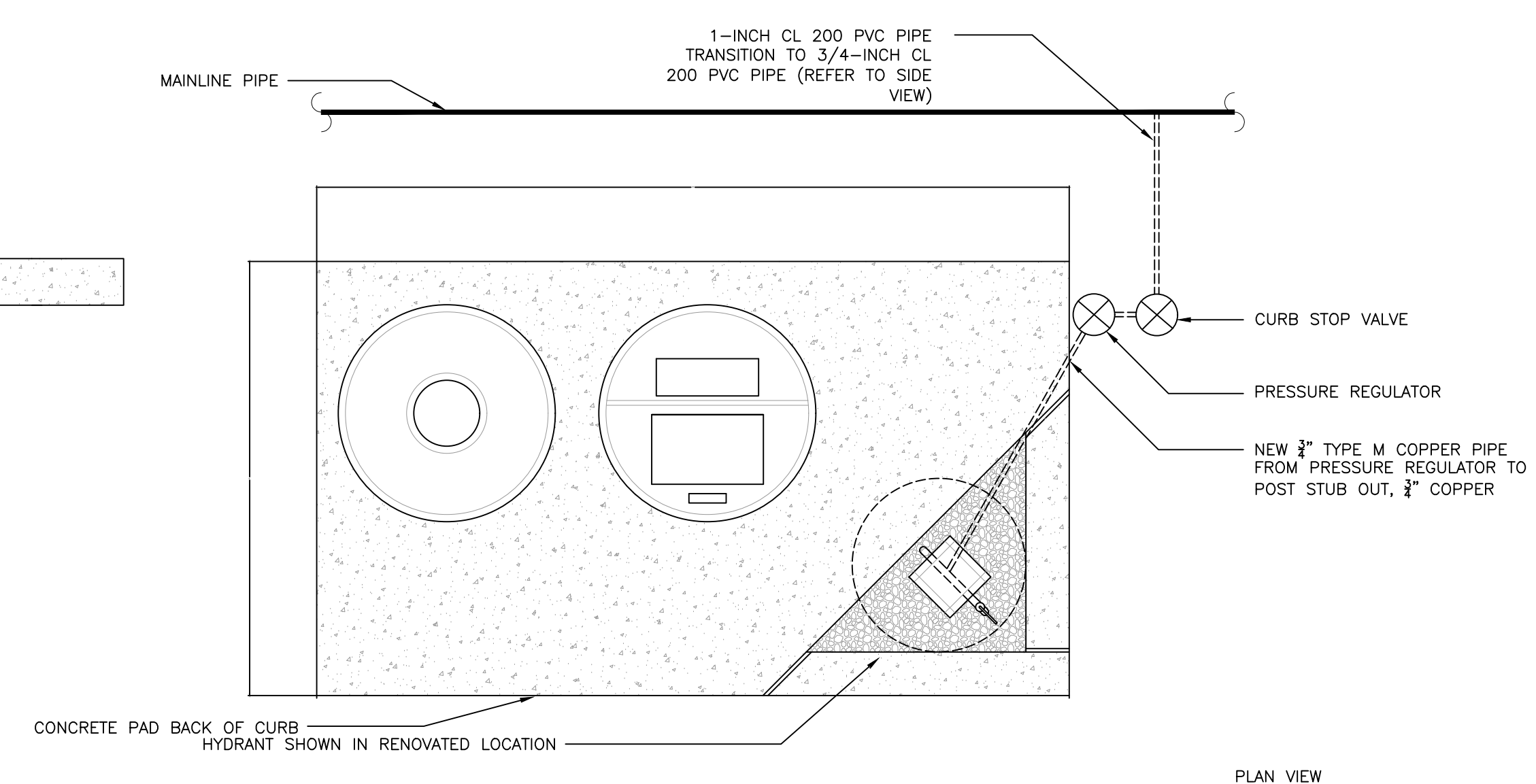


three inches = one foot
one and one half inches = one foot
one inch = one foot
three quarters inch = one foot
one half inch = one foot
one quarter inch = one foot
one eighth inch = one foot
one sixteenth inch = one foot

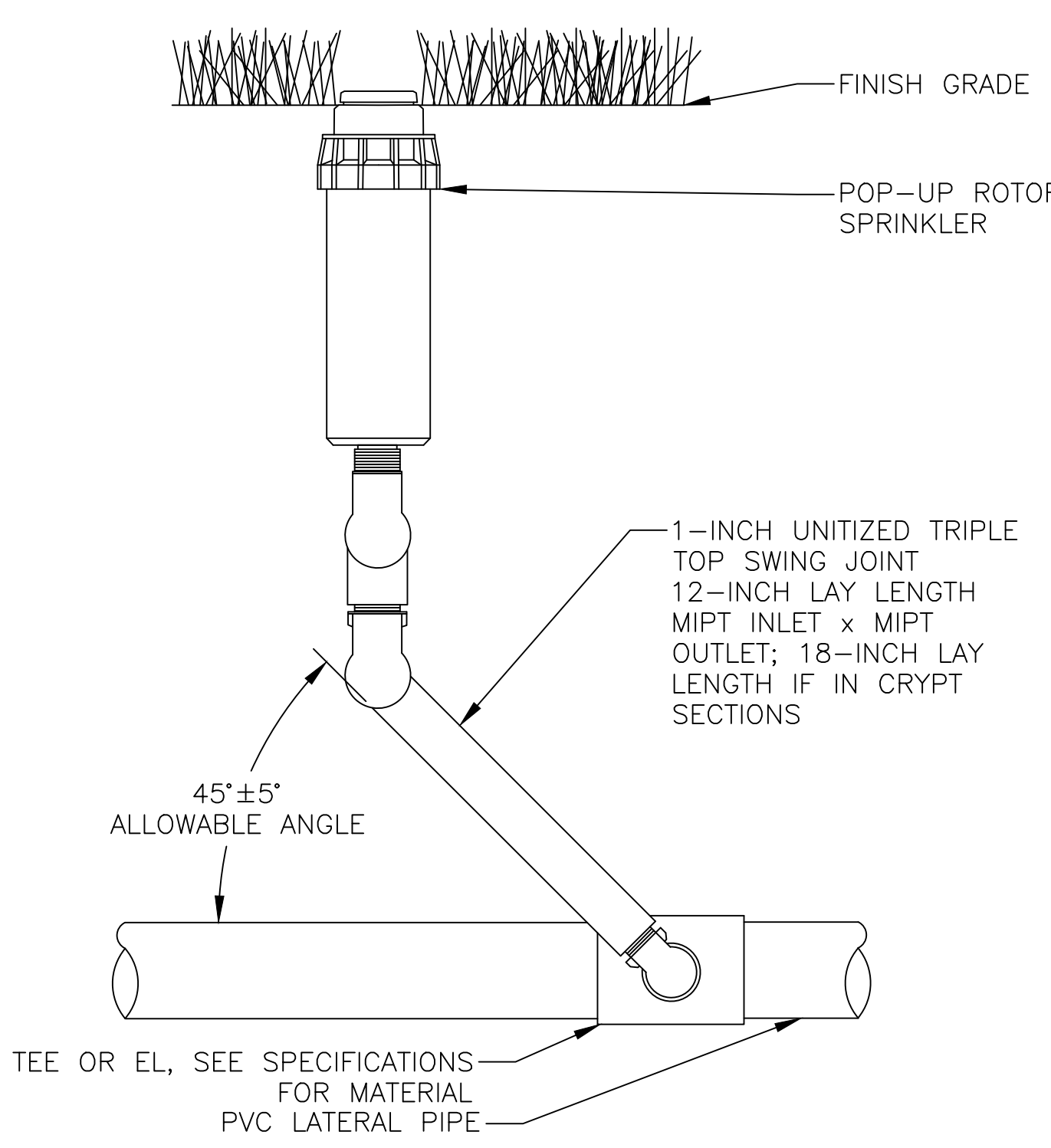


F3
I-103
FLOWER WATER STATION ASSEMBLY
NOT TO SCALE



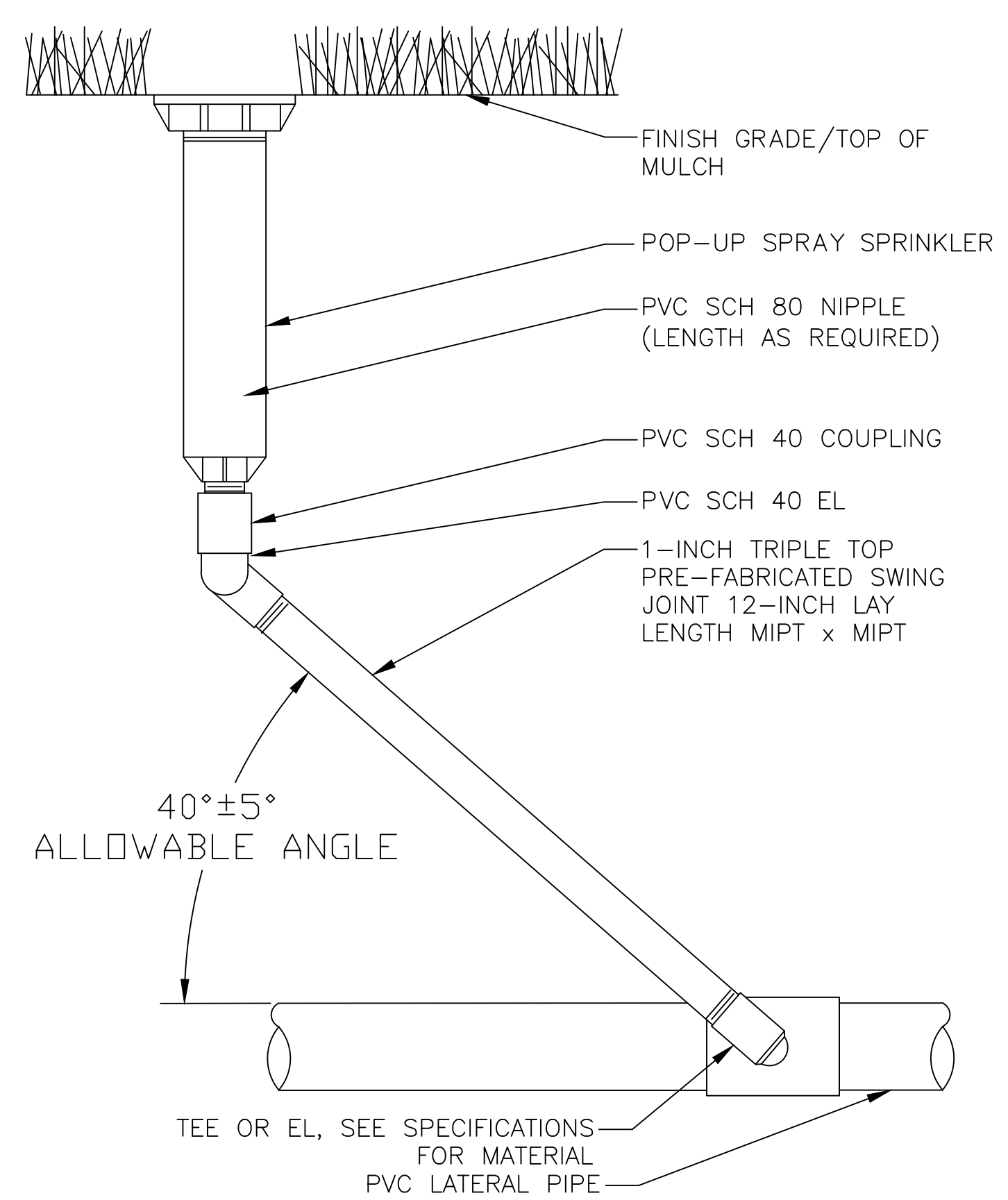
NOTES:
1. IN ACCORDANCE WITH AMERICAN SOCIETY OF IRRIGATION CONSULTANTS GUIDELINE 100-2002 "FOR EARTH GROUNDING ELECTRONICS EQUIPMENT IN IRRIGATION SYSTEMS", SECTION 12 PARAGRAPH 1: "ELECTRONIC EQUIPMENT AND WIRES/CABLES SHALL BE INSTALLED OUTSIDE OF THE SPHERE OF INFLUENCE OF THE GROUNDING GRID. THIS IS NECESSARY TO AVOID RE-INJECTING THE DISCHARGED LIGHTNING ENERGY INTO THE EQUIPMENT AND THE UNDERGROUND WIRES AND CABLES."
2. SEAL OPENING IN TOP OF CONDUITS WITH EXPANDING FOAM AFTER WIRE INSTALLATION.

D3
I-103
IRRIGATION CONTROLLER ASSEMBLY
NOT TO SCALE



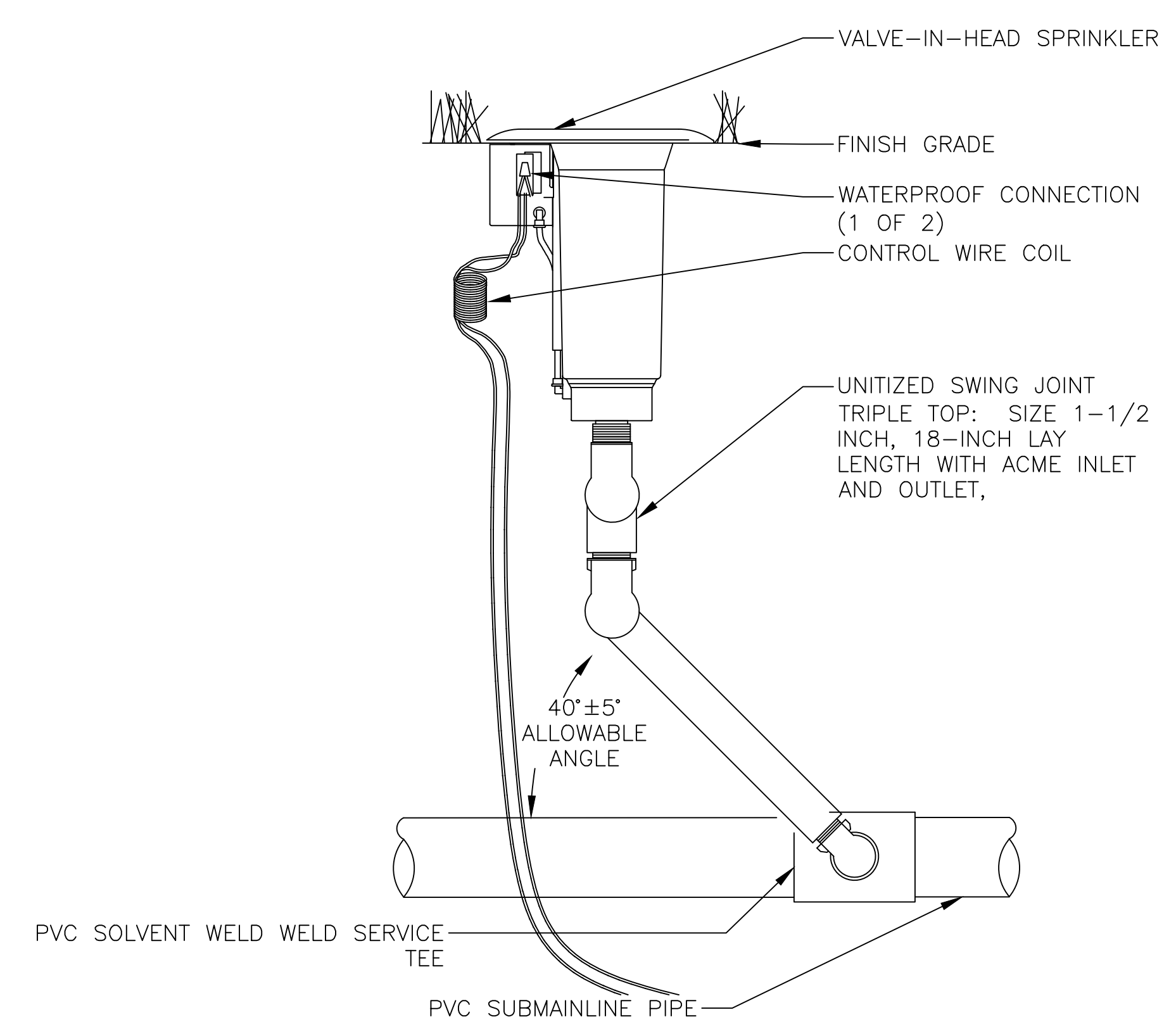
NOTES:
1. INSTALL SWING JOINT LAY ARM BETWEEN 30° AND 45° OF LATERAL PIPE IN ORDER TO ABSORB DOWNWARD IMPACT. IF SWING JOINT CAN NOT BE INSTALLED AT SPECIFIED ANGLE, CONSULT RESIDENT ENGINEER PRIOR TO INSTALLATION OF SWING JOINT.

B2
I-102
POP-UP ROTOR SPRINKLER ASSEMBLY
NOT TO SCALE



NOTES:
1. INSTALL SWING JOINT LAY ARM BETWEEN 30° AND 45° OF LATERAL PIPE IN ORDER TO ABSORB DOWNWARD IMPACT. IF SWING JOINT CAN NOT BE INSTALLED AT SPECIFIED ANGLE, CONSULT RESIDENT ENGINEER PRIOR TO INSTALLATION OF SWING JOINT.

C3
I-102
POP-UP SPRAY SPRINKLER ASSEMBLY
NOT TO SCALE



NOTE:
1. INSTALL SWING JOINT LAY ARM BETWEEN 30° AND 45° OF LATERAL PIPE IN ORDER TO ABSORB DOWNWARD IMPACT. IF SWING JOINT CAN NOT BE INSTALLED AT SPECIFIED ANGLE, CONSULT ENGINEER PRIOR TO INSTALLATION OF SWING JOINT.

F5
I-102
SPRINKLER PLACEMENT DETAIL
NOT TO SCALE

BID DOCUMENTS

CONSULTANTS: Consulting Engineers and Scientists 131 12th St. North Birmingham, AL 35203 P (205) 942-0388 F (205) 443-0302		 PEAKS TO PLAINS DESIGN 404 NORTH 31ST STREET, SUITE 405 BILLINGS, MONTANA 59101 (406) 294-9499 • (406) 294-9470 FAX WWW.PEAKSTOPLAINS.COM		 3202 West Main Suite C Rapid City, South Dakota 57702 phone: 605.343.9606 fax: 605.341.7395 Albertson Engineering Inc.		 46102 6/18/2016		ARCHITECT/ENGINEERS: 517 7th street rapid city sd 57701 p 605.342.9470 f 605.342.2377 www.4front.biz		Drawing Title IRRIGATION DETAILS		Project Title SALISBURY NATIONAL CEMETERY GRAVESITE EXPANSION		Project Number 876CM3021		NCA DESIGN AND CONSTRUCTION SERVICE 	
Revisions:		Date		Approved Project Director		Location SALISBURY NATIONAL CEMETERY SALISBURY, NC		Date 7/22/16		Checked RWB		Drawn JDL		Drawing Number I-105 Dwg 62 of 63			