

ARCHIVOLT, INC.
Architecture - Engineering - General Construction
5800 Ranchester - Suite 142
Houston, Texas 77036
Ph. (713) 779-3474
Fx. (713) 779-3491
Email: info@archivoltinc.com

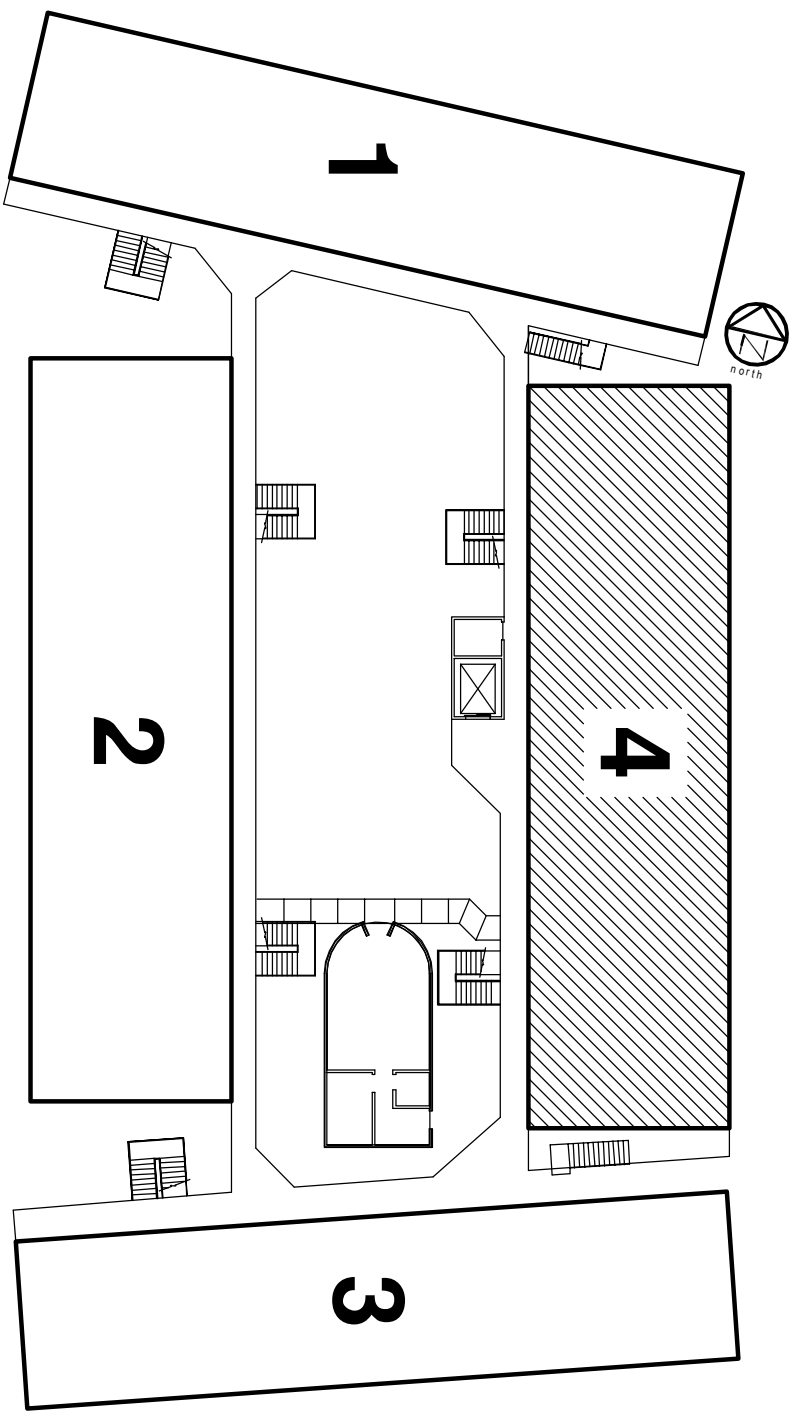
20 Demolition Notes

1. REMOVE ALL WATER CLOSETS AND REPLACE WITH ELONGATED WATER CLOSETS. CAP ALL PLUMBING LINES THAT ARE NOT BEING USED.
2. REPLACE TUB WITH SHOWER STALL IN APARTMENT NUMBER 110 AND 109 FOR ADA COMPLIANCE.
3. INSTALL GRAB BARS AS PER DETAIL IN PLUMBING DWG. IN SHOWER.
4. INSTALL NEW PEDESTAL SINKS IN APARTMENT NUMBER 108 AND 107. REMOVE TUB AND WALL SEPARATING THE SINK AND THE TUB FROM THESE BATHROOMS.
5. CHANGE ALL DOOR SWINGS AS SHOWN ON THIS DRAWING IF DIFFERENT IN THE FIELD.
6. REPLACE ALL EXTERIOR DOORS.

1. WATER CLOSET SEAT HEIGHT: 17" TO 19" A.F.F.
2. CENTERLINE OF WATER CLOSET: 18" FROM SIDE WALL.
3. GRAB BAR BEHIND WATER CLOSET: 36" LONG, 34" A.F.F.
4. GRAB BAR AT SIDE OF WATER CLOSET: 42" LONG, 34" A.F.F.
5. GRAB BAR DIAMETER: 1-1/2"
6. SPACE BETWEEN WALL AND GRAB BAR: 1-1/2"
7. TOILET PAPER DISPENSER: 36" INCHES FROM REAR WALL, 19" MIN. A.F.F.
8. KNEE CLEARANCE AT LAVATORY: APPROX. 29" MIN. HGT., 8" MIN. DEPTH.
9. FAUCET HANDLES: NO MORE THAN 17" FROM FRONT COUNTER OR SINK.
10. LAVATORY DEPTH: 6" MINIMUM.
11. LAVATORY HOT WATER AND DRAIN PIPES INSULATED WHERE EXPOSED.
12. LAVATORY RM SURFACE: 34" MAX. A.F.F.
13. MIRRORS AND OTHER FIXTURES: BOTTOM EDGE 40" MAX. A.F.F.
14. DOORS SHALL HAVE LEVER TYPE HANDLES MTD. MAX. 42" A.F.F.
15. RECEPTACLES ON WALL: 15" A.F.F.
16. COUNTERTOPS NO LESS THAN 36" IN LENGTH AND 34" A.F.F. (MAX).
17. ACCESSIBLE DOORS: THRESHOLD MAX. 1/2" MAXIMUM OPENING FORCE 85 LBS. FOR EXTERIOR HINGED DOOR AND 5 LBS. FOR SLIDING OR FOLDING DOORS, 5 LBS. FOR INTERIOR HINGED DOORS.
18. DOOR OPENINGS: MINIMUM CLEAR OPENING - 32" WIDE (CLEAR).

12 ADA Requirements

08 Building Key



EQUIPMENT SCHEDULE

ITEM NO.	QTY	EQUIPMENT CATEGORY	MANUFACTURER	MODEL NUMBER	EQUIPMENT REMARKS	AMPS	KW	HP	VOLTS	PHASE	PLUG	NEMA	ELECTRICAL AFF (IN)	COLD WATER SIZE (IN)	COLD WATER AFF (IN)	HOT WATER SIZE (IN)	HOT WATER AFF (IN)	DIRECT DRAIN SIZE (IN)	DIRECT DRAIN AFF (IN)	INDIR DRAIN SIZE (IN)	ITEM NO.
2.0	1	RAVAGE WITH BUILT-IN OVEN	RENOVARE	3000	97100-118-180-X	ELECTRIC			240V/60HZ												2.0
4.0	1	HAND SINK	ADVANCE	EMBO	7-35-60-1-X	BY OTHER															4.0
5.0	1	REFRIGERATOR	RENOVARE	EMBO	6-4112	20660-41															5.0
6.0	1	ICE DISPENSER	RENOVARE	EMBO	6-4112	20660-41															6.0
7.0	1	DISHWASHER	RENOVARE	EMBO	6-4112	20660-41															7.0
8.0	1	FOODWASTE DISPOSERS	RENOVARE	EMBO	6-4112	20660-41															8.0
9.0	1	ICE DISPENSER	RENOVARE	EMBO	6-4112	20660-41															9.0
10.0	1	WATER HEATER	RENOVARE	EMBO	6-4112	20660-41															10.0
11.0	1	WATER HEATER	RENOVARE	EMBO	6-4112	20660-41															11.0
12.0	1	RENOVARE RANGE/MASTER BALLISTA	RENOVARE	BROWN	6-4112	20660-41															12.0

MATERIAL SCHEDULE

- COUNTER TOP:
COUNTERTOP: FINISH-BULLNOSED
GRANITE SLAB TYPE-OWNER SELECT
PAINT: COLOR P1 - COLOR MANUFACTURER- OWNER SELECT
CEILING TILE:
O.G.-1 3/4" GYPSUM
O.G.-2 ARMS IRONS 24"x24"x1/2" VINYL COATED GYPSUM # GB5045
TILE:
FLOOR TILE T1- 2"x2" QUARTZ DALTILE - BROWN
FLOOR TILE T2- VINYL SHEET - FORTO CHERRY WOOD PATTERN
FLOOR DET T3- 4"x4" ARTIC WHITE - 1/4" ROUNDO MOLDING
WALL TILE T4- FRP PANEL BEGINNING FROM 50" H UP TO CEILING
WALL TILE T5-

FINISH SCHEDULE

- W1 PAINTED P1
W2 1/4" CERAMIC TILE
W3 FRP - COLOR WHITE
T1 CERAMIC TILE T1
T2 CERAMIC TILE T2
T3 CERAMIC TILE T3
T4 CERAMIC TILE T4
T5 CERAMIC TILE T5
O.G.-1 3/4" GYPSUM
O.G.-2 VINYL COATED GYPSUM

SYMBOL SCHEDULE

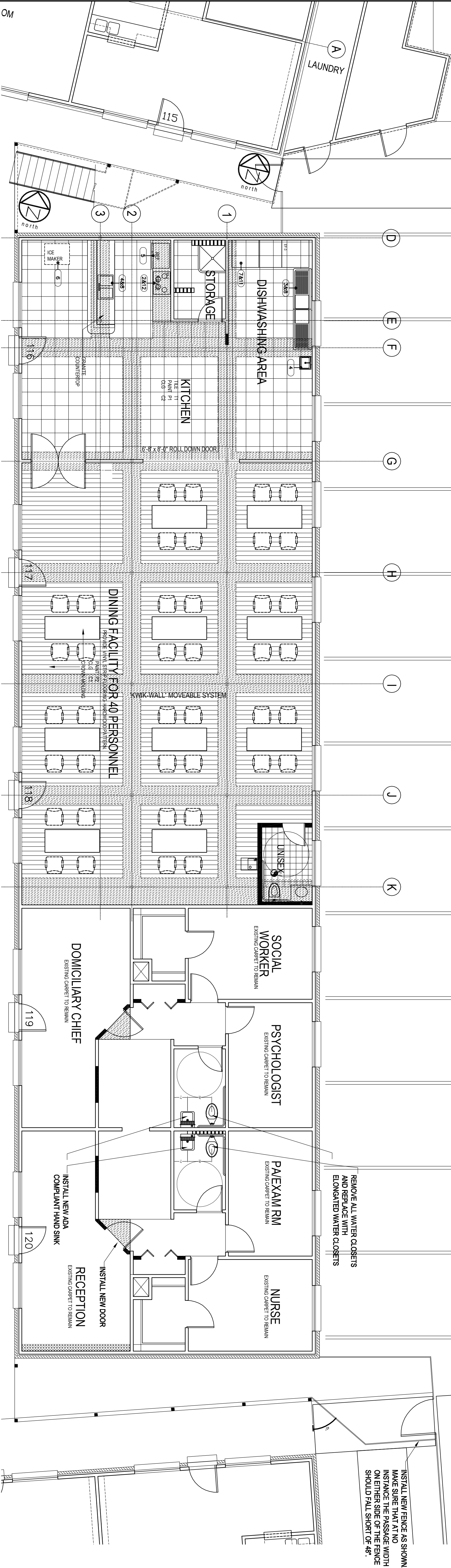
- TILE FLOOR MATERIAL -
FALSE CEILING MATERIAL - VINYL COATED GYPSUM PANELS
FLOOR DOWN (ALSO HOUSING MECHANICAL DUCTWORK) MATERIAL - 3/4" GYPSUM TYPE X

19

11

07

03



17 First Floor-Building 4

SCALE: 3/16" = 1'-0"

A Proposed
RGH Casa Center, Inc.

7329 Fannin

Houston, Texas

REVISION:

DRAWING TITLE:

CADD FILE:
A2-2.0D.dwg
CHECKED BY:
REVISION:
DRAWN BY:
FSA
PROJECT NO.:

ISSUED:
FOR PERMIT:
JULY 18, 2007
DRAWING NO.:

A-2.0D