

A diagram of a semi-circular arch structure. It features three concentric semi-circular arches. The innermost arch is the largest, followed by a middle arch, and then an outermost arch. The arches are supported by four columns: two on the left and two on the right. The columns are of varying heights, with the outermost columns being the tallest and the innermost columns being the shortest. The entire structure is shown in a cross-section view.

**ARCHIVOLT, INC.**  
Architecture - Engineering - General Construction

5800 Ranchester - Suite 142  
Houston, Texas 77036  
Ph. (713) 779-3474  
Fx. (713) 779-3491  
Email: [info@archivoltinc.com](mailto:info@archivoltinc.com)

08	Building Key
----	--------------

20

16

12

1

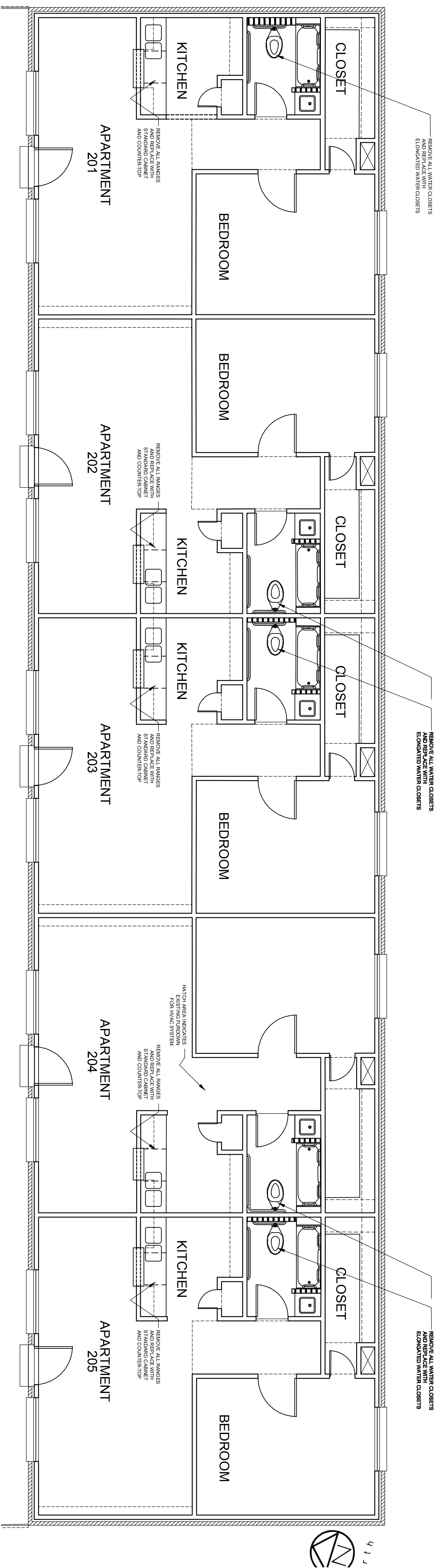
16

15



20

03



A Proposed  
**RGH Casa Center, Inc.**

7329 Fannin

Houston, Texas

REVISED:	
1	
2	
3	
4	
5	
DRAWING TITLE:	

CADD FILE: A21-C-10.dwg
CHECKED BY: NRM
DRAWN BY: LKL
PROJECT NO.:
ISSUED: FOR PERMIT JUNE 29, 2007
DRAWING NO.:

SCALE: 3/16" = 1'-0"

17	Second Floor-Building 3
----	-------------------------

# A-2.1A