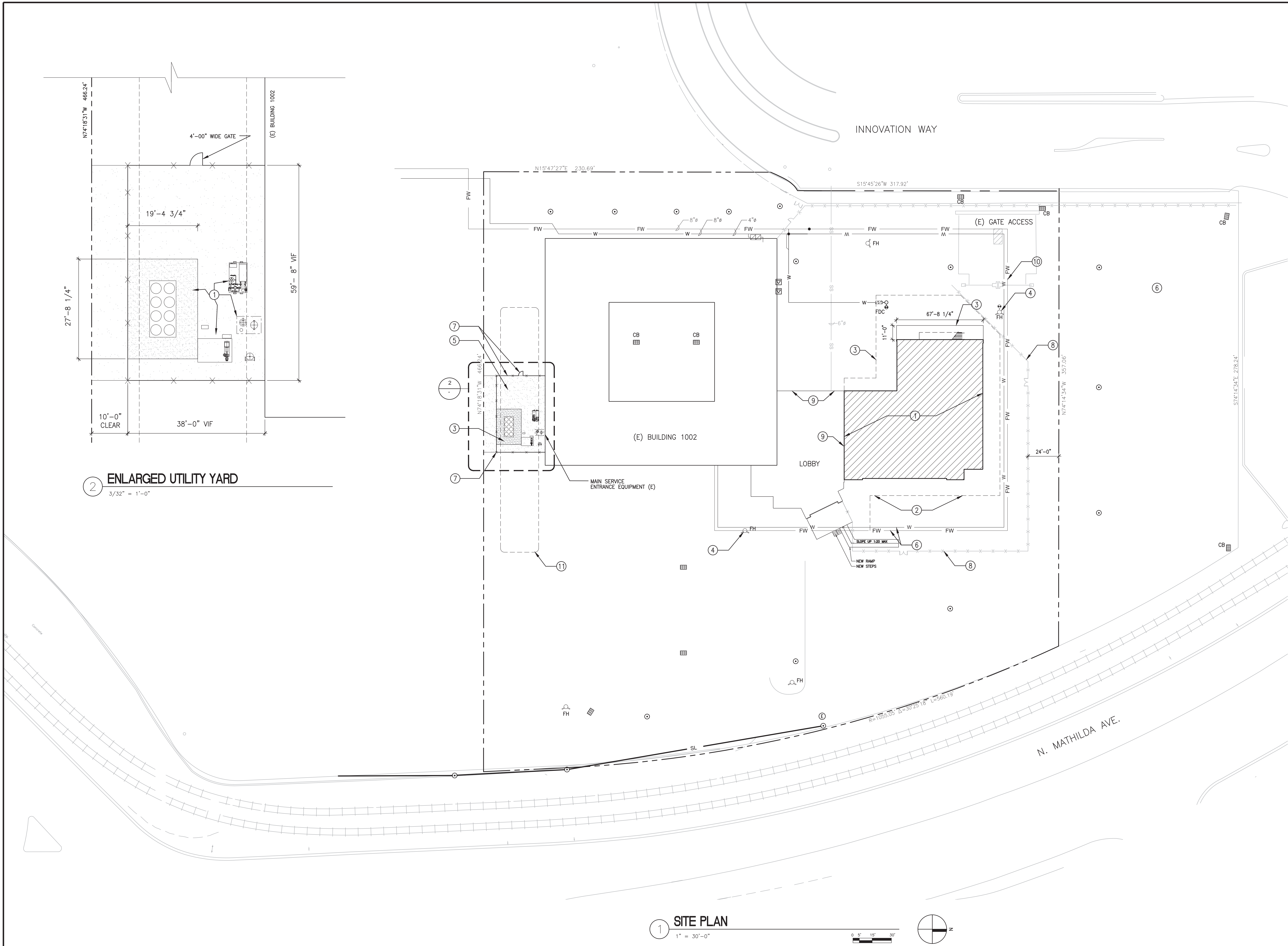


three inches = one foot
one and one half inches = one foot
one inch = one foot
three quarters inch = one foot
one half inch = one foot
three eighths inch = one foot
one quarter inch = one foot
one eighth inch = one foot



GENERAL NOTES:

1. NOT ALL UTILITIES MAY BE SHOWN.
2. SEE MECHANICAL, PLUMBING AND ELECTRICAL SITE PLANS FOR ADDITIONAL UTILITY INFORMATION AND REQUIREMENTS.
3. UTILITIES INFORMATION WAS OBTAINED FROM HISTORIC DRAWINGS AND ARE GENERALLY LOCATED. VERIFY UTILITY SIZES LOCATIONS DEPTHS AND CONDITION PRIOR TO CONSTRUCTION.
4. VERIFY EXACT PIPING LOCATIONS WITH EXISTING ON-SITE UTILITIES, NEW UTILITIES AND OTHER CONSTRUCTION CONDITIONS.
5. ELEVATORS WITHIN EXISTING BUILDING MAY NOT BE USED FOR TRANSPORT OF CONSTRUCTION MATERIALS OR PERSONNEL.

KEYED NOTES:

- ① NEW BUILDING ADDITION.
- ② BUILDING PAD FILL, EXTEND 10' BEYOND BUILDING PERIMETER, PLUS SLOPE BERM TOE 1:3. MATCH EXISTING GRADES. ELEVATION 10" BELOW F.F.
- ③ CONCRETE PAD, SEE 8/SS003. SEE MS100 & MS401 FOR ADDITIONAL INFORMATION.
- ④ NEW FIRE HYDRANT, CONNECT TO EXISTING FW MAIN
- ⑤ NEW ASPHALT PAVING, MATCH EXISTING PAVEMENT EDGES
- ⑥ (E) WATER & FIRE WATER LINES
- ⑦ DECORATIVE FENCE AND GATE, 8'-0" HIGH
- ⑧ TEMPORARY CONSTRUCTION FENCE WITH CONTROLLED CAFE ACCESS.
- ⑨ MAINTAIN CONSTRUCTION BARRIER BETWEEN BUILDING AT BOTH FLOORS DURING ENTIRE CONSTRUCTION PERIOD. BARRIER SHALL BE HARD WALL. PLASTIC BARRIERS SHALL NOT BE UTILIZED.
- ⑩ REMOVE PORTIONS OF EXISTING ACCESS BARRIER AS REQUIRED TO FACILITATE CONSTRUCTION TRAFFIC.
- ⑪ EXISTING STOCKPILED FILL FOR USE AS BUILDING FILL FOR THIS PROJECT. SEE NOTE 2.

LEGEND:

EXISTING UTILITIES

SS	(E) SANITARY SEWER
SD	(E) STORM DRAIN
FW	(E) FIRE WATER
W	(E) WATER
G	(E) GAS
E	(E) ELECTRIC
T	(E) TELEPHONE

EXISTING SYMBOLS

⊙	(E) LIGHT POLE
⊠	(E) CATCH BASIN
⊞	(E) TRANSFORMER
→	(E) DIRECTION OF FLOW
⊙	(E) FIRE HYDRANT

NEW UTILITIES

SS	(N) SANITARY SEWER
SD	(N) STORM DRAIN
FW	(N) FIRE WATER
W	(N) WATER
G	(N) GAS
E	(N) ELECTRICAL
T	(N) TELEPHONE

1 SITE PLAN

Revisions:	Date
1	8/17/16

CONSULTANTS:

SYSKA HENNESSY GROUP
A member company of SH Group, Inc.

Syska Hennessy Group, Inc.
425 California Street
Suite 700
San Francisco, CA 94104
Tel: 415.288.9060
Fax: 415.835.0385
www.syska.com

SJ ENGINEERS
300 Frank R. Ogawa Plaza
Suite 308
Oakland, CA 94612
Tel: (510) 832-1505
Fax: (510) 832-1507
Job No: 213-0801

ARCHITECT/ENGINEERS:

KPA
ENGINEERS ARCHITECTS
ONE KAISER PLAZA SUITE 445
OAKLAND CALIFORNIA 94612
TEL 510.271.6701 FAX 510.271.6707
©THE KPA GROUP 2014
KPA Project No. 582.00

Drawing Title
SITE PLAN

Approved Project Director
-
VAPAHCS PLANNING AND ENGINEERING

Project Title
ESTABLISH
SUNNYVALE R AND D
CAMPUS

Location
1080 INNOVATION WAY, SUNNYVALE, CA 94085

Date
11/25/2014

Checked
PWP

Drawn
KPA TEAM

Project Number
640-397

Building Number
1002

Drawing Number
CU103

Dwg. of

Office of Construction and Facilities Management

VAPAHCS
Vallejo Area Public Health Care System