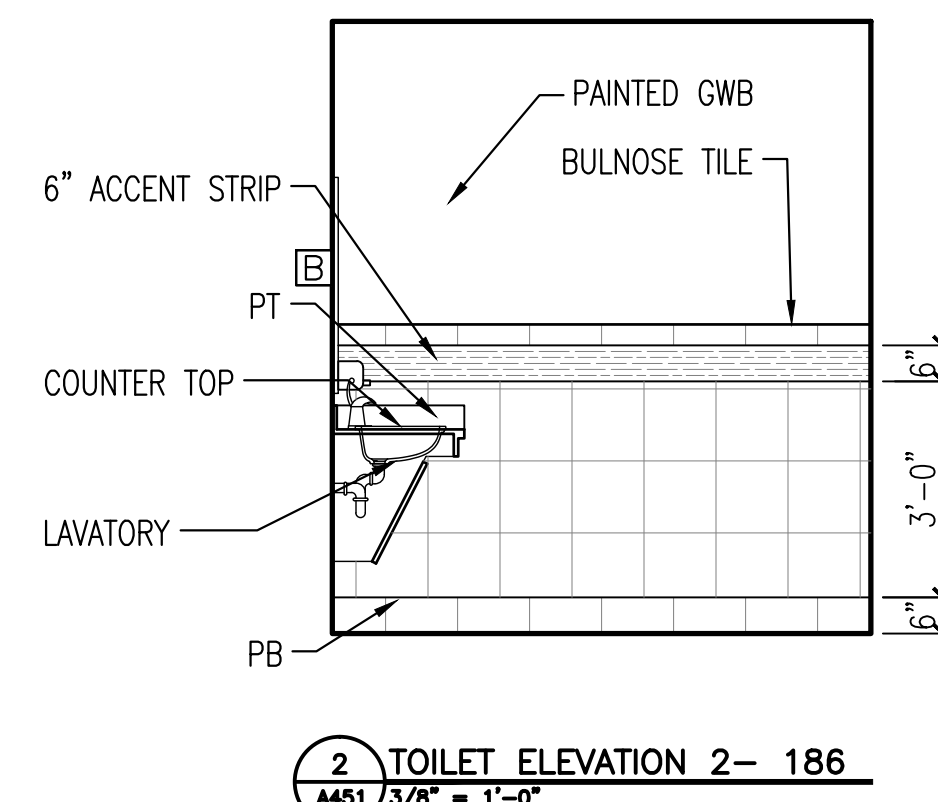
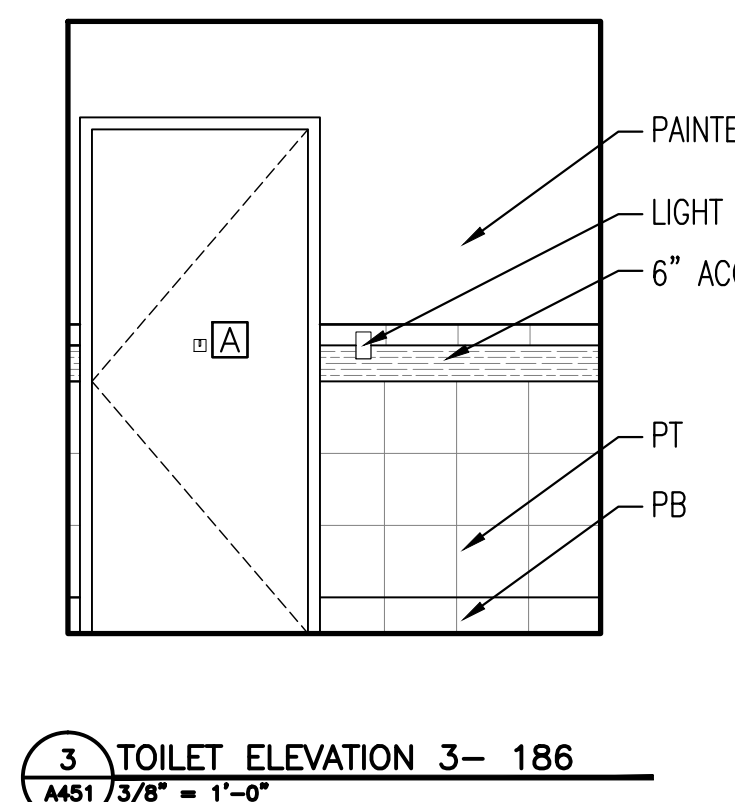


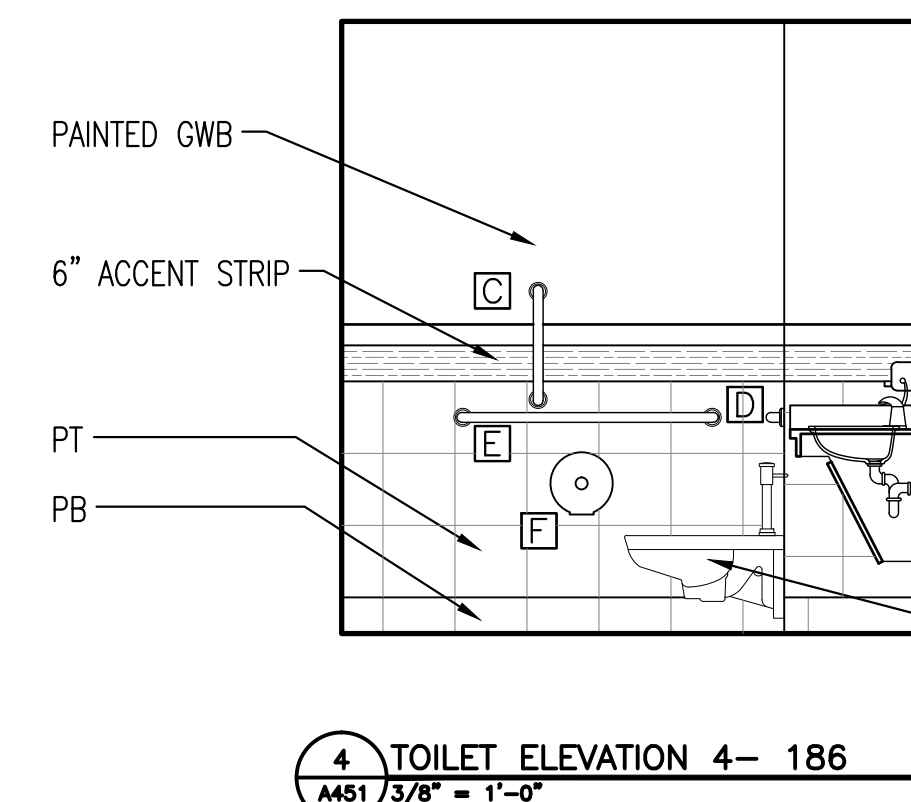
TOILET WET WALL ELEVATIONS SIMILAR AT ROOMS  
G50, G51, G78 G79, 163, 170, 265, 270, 288,  
293



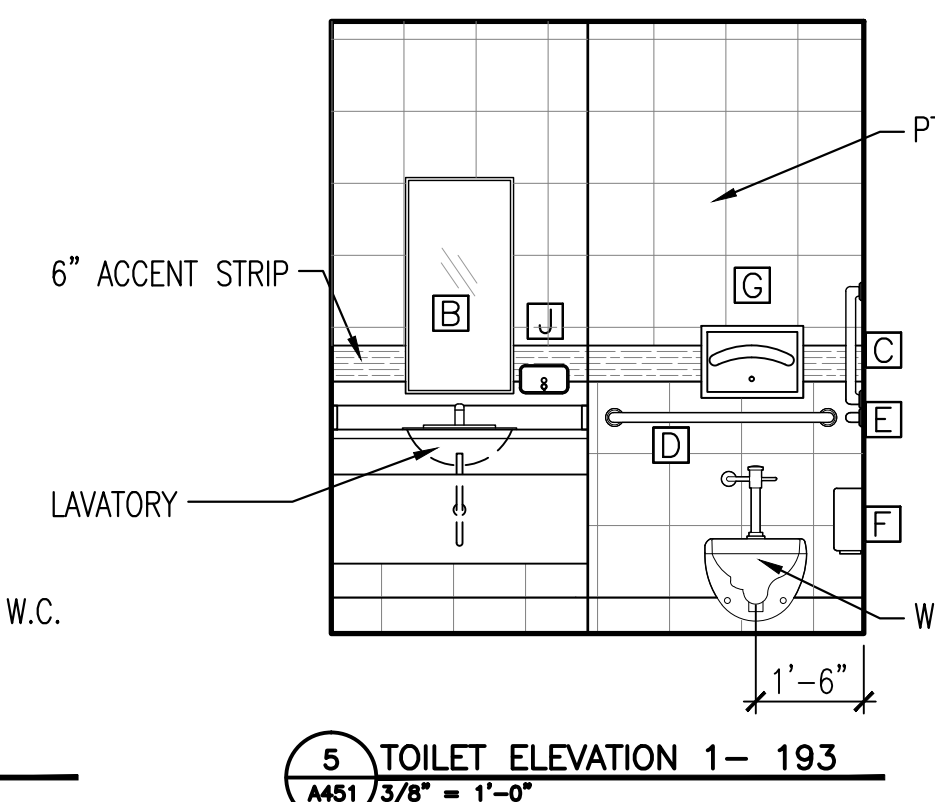
TOILET WET WALL ELEVATIONS SIMILAR AT ROOMS  
G50, G51, G78 G79, 163, 170, 265, 270, 288,  
293



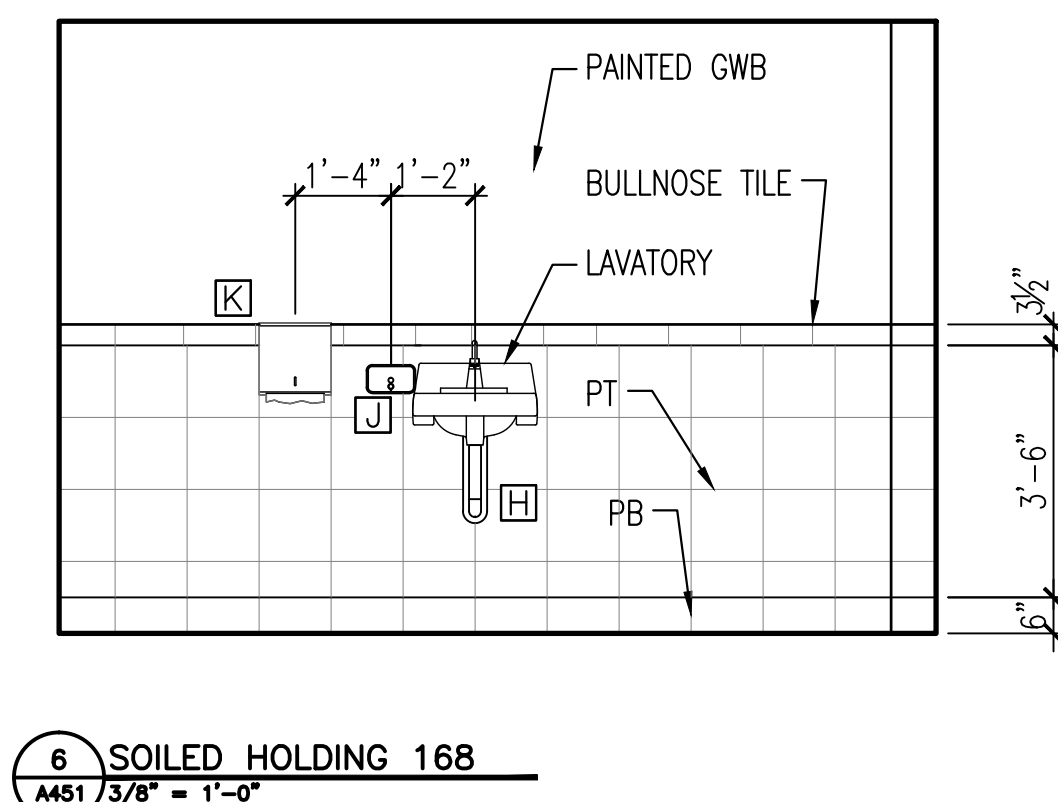
TOILET WET WALL ELEVATIONS SIMILAR AT ROOMS  
G50, G51, G78 G79, 163, 170, 265, 270, 288,  
293



TOILET WET WALL ELEVATIONS SIMILAR AT ROOMS  
G50, G51, G78 G79, 163, 170, 265, 270, 288,  
293



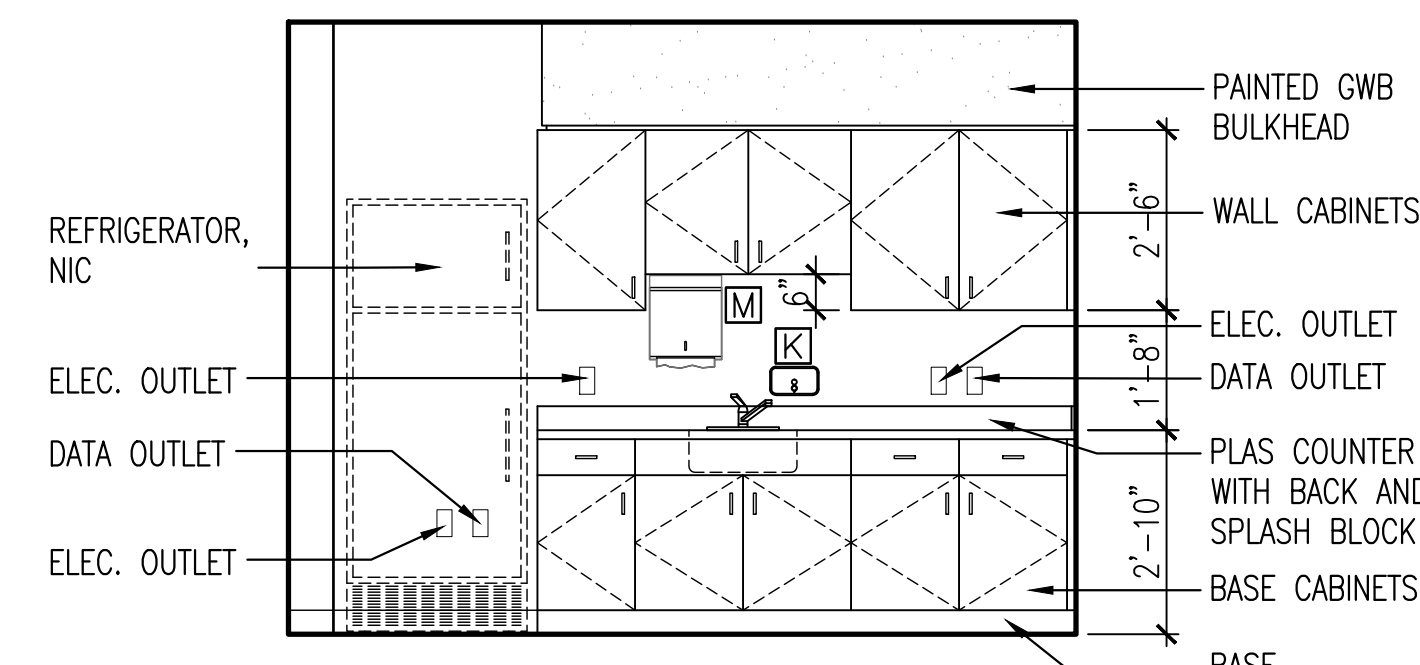
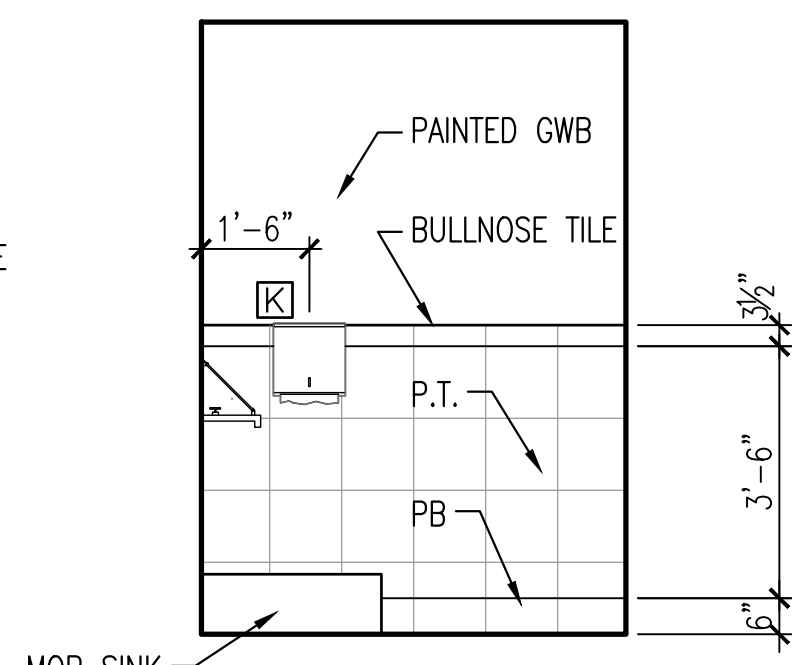
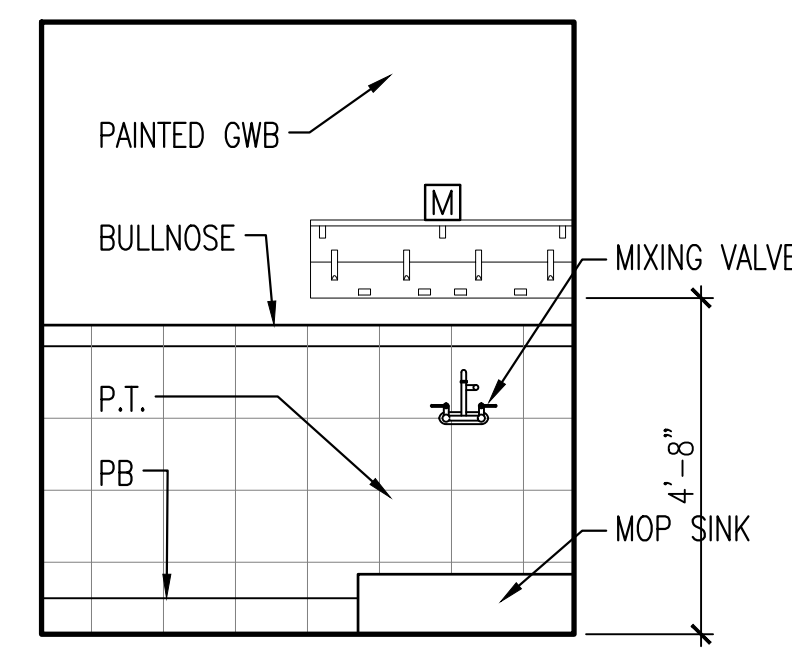
TOILET WET WALL ELEVATION SIMILAR AT ROOMS  
170, 270, 293



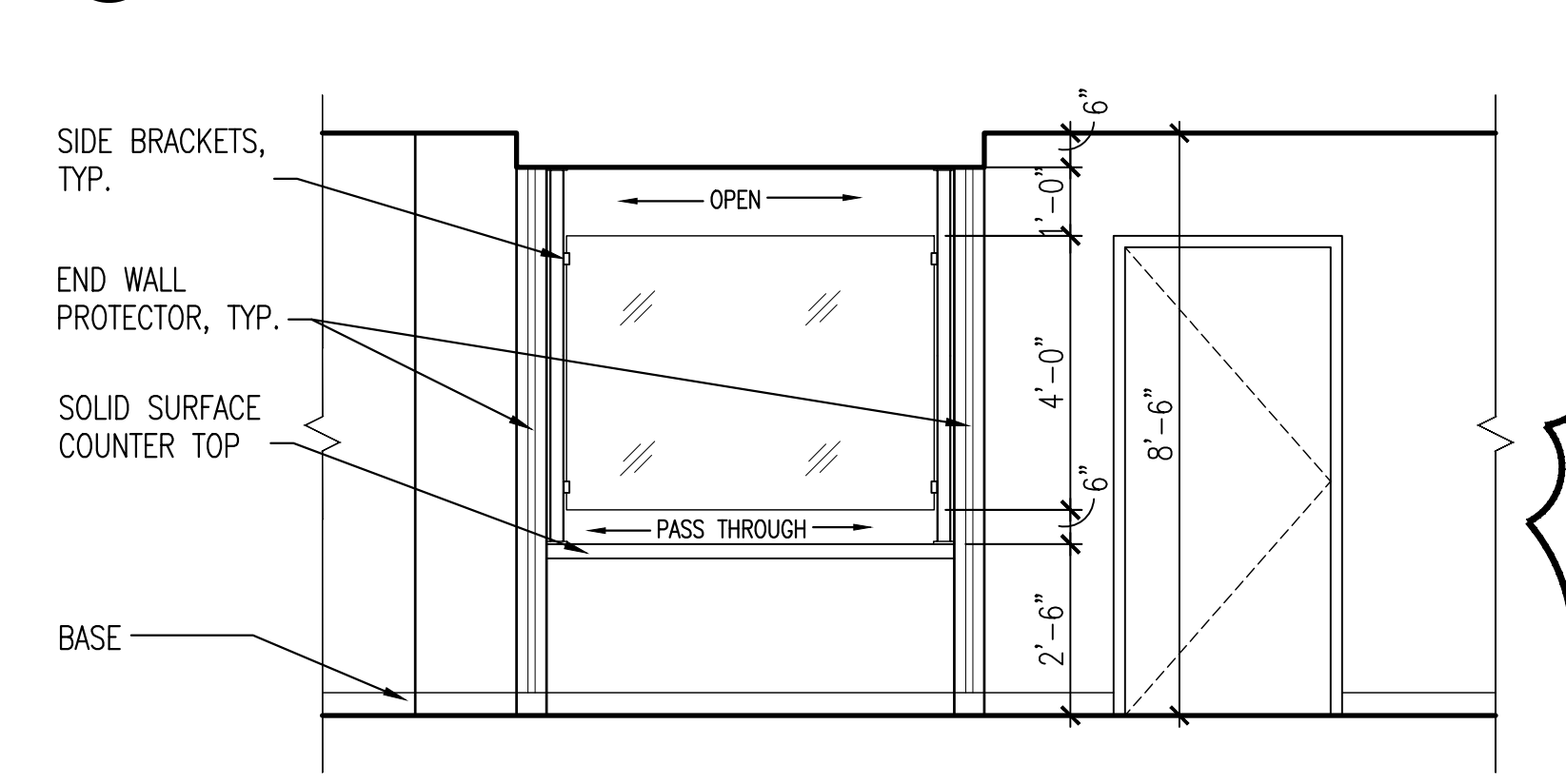
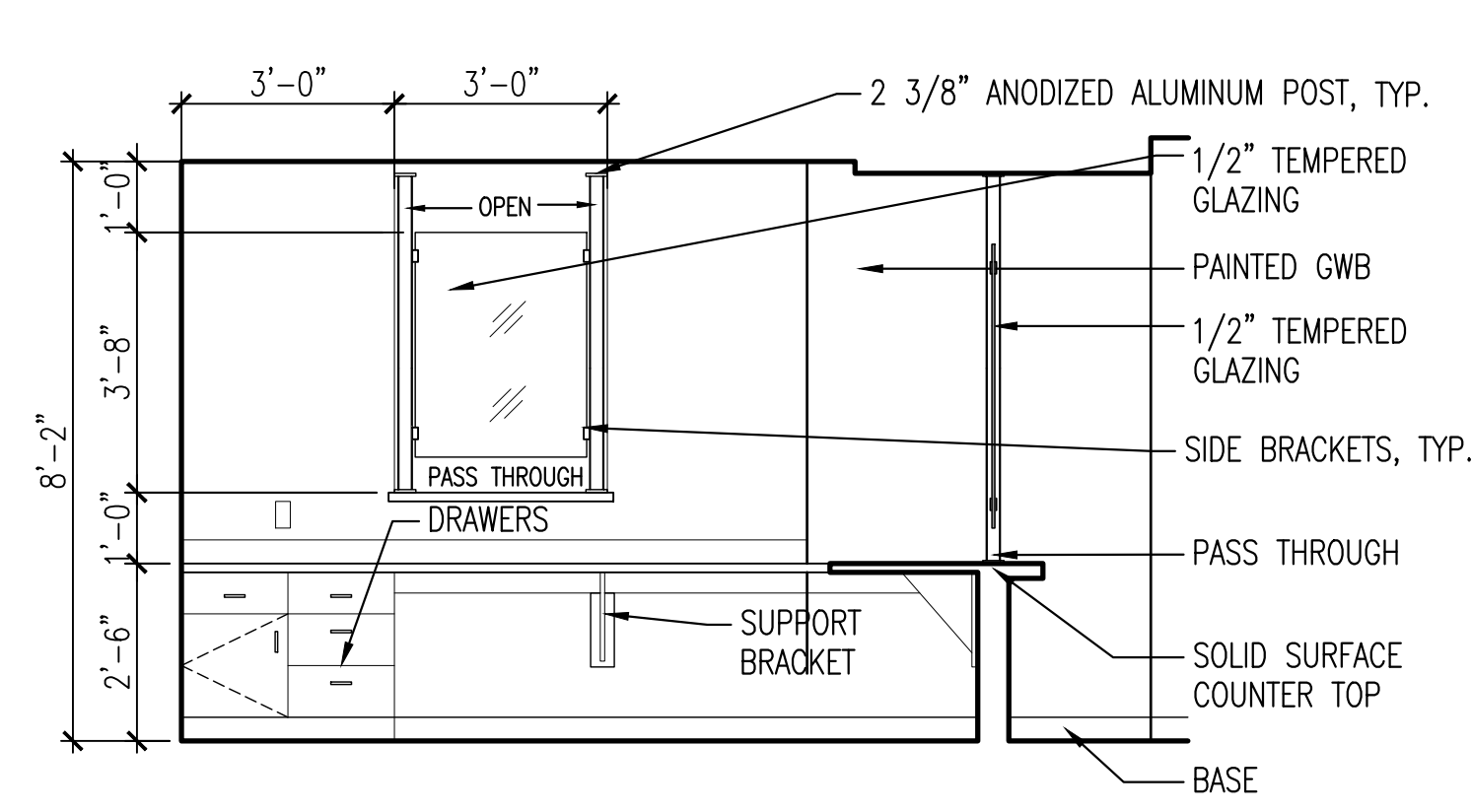
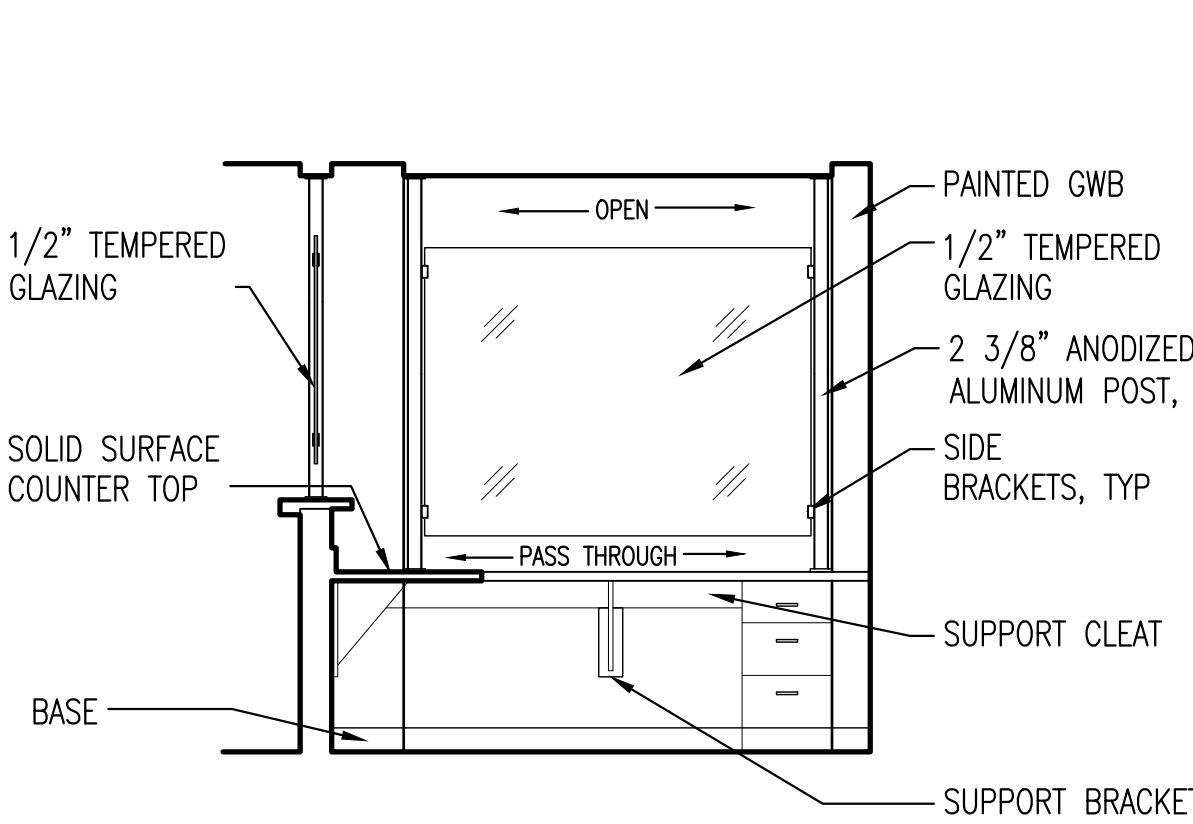
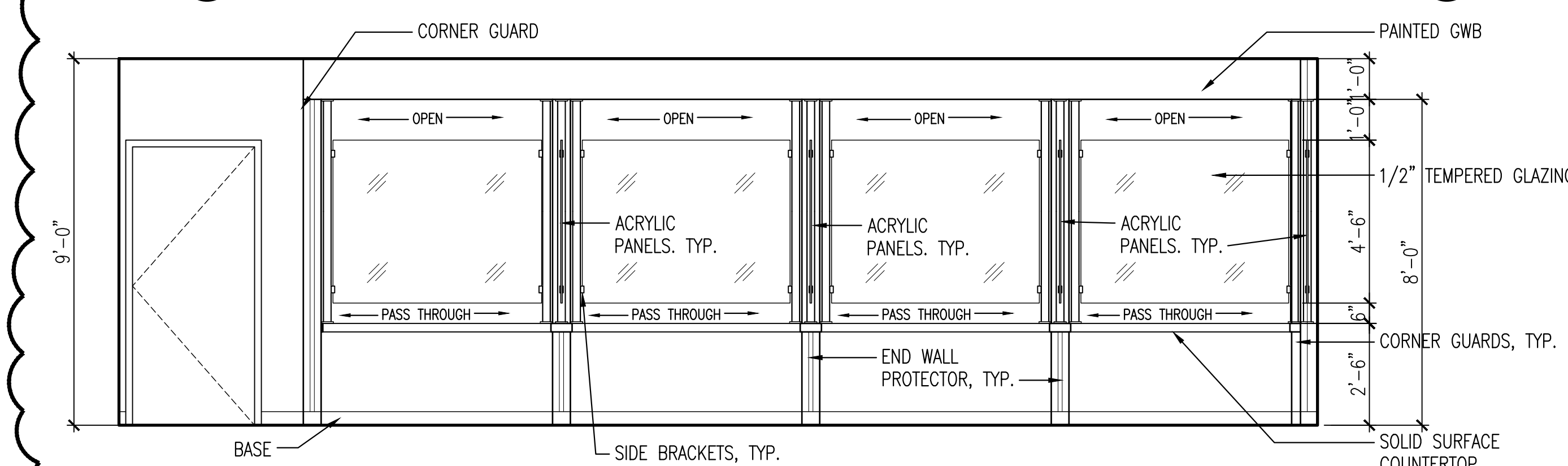
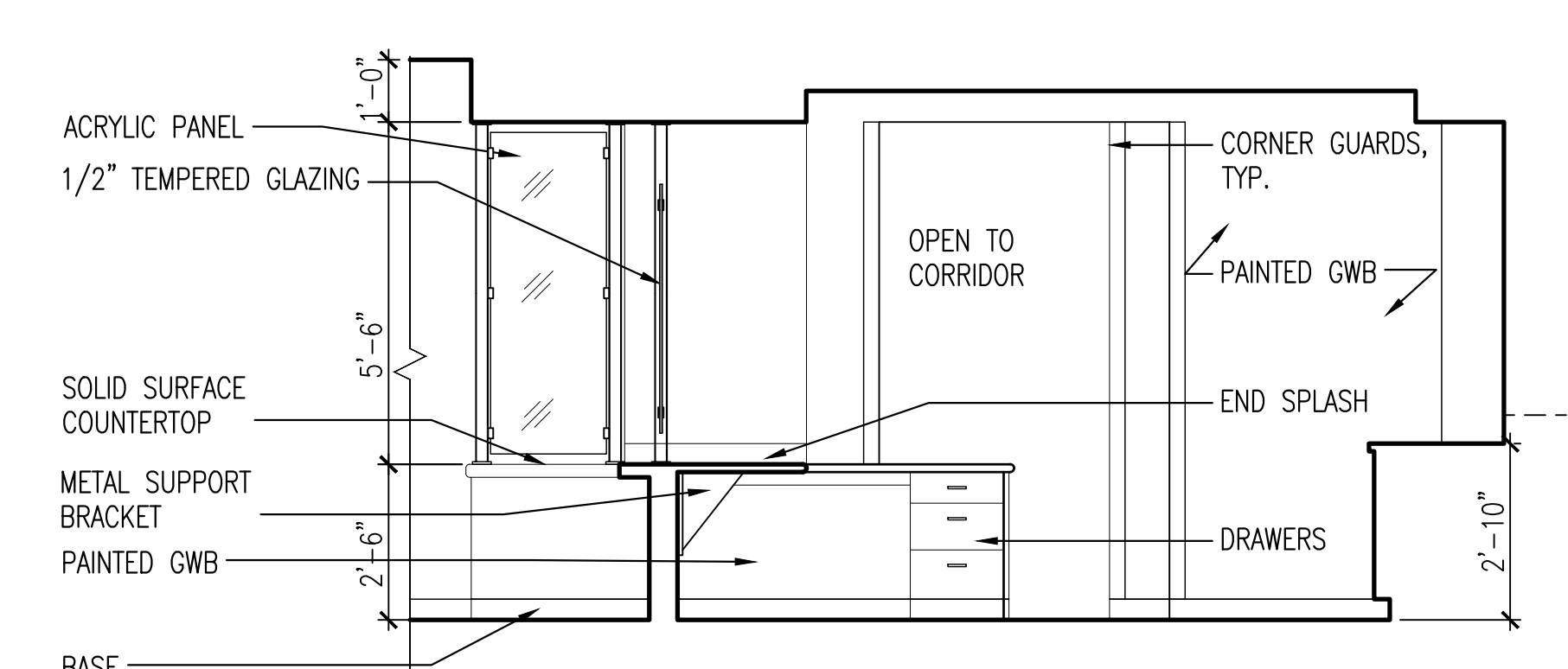
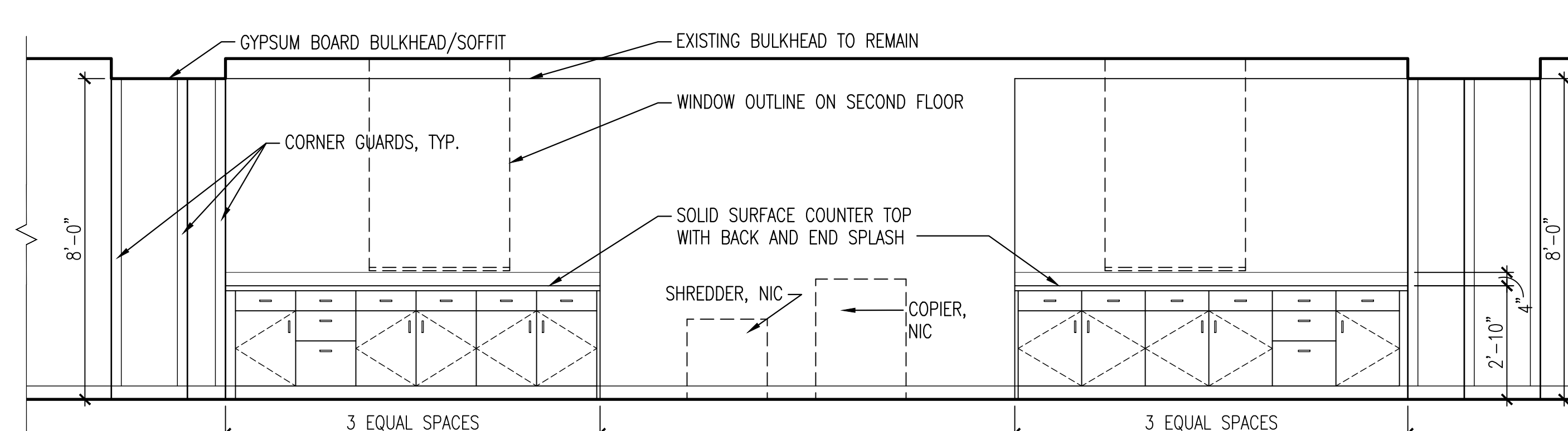
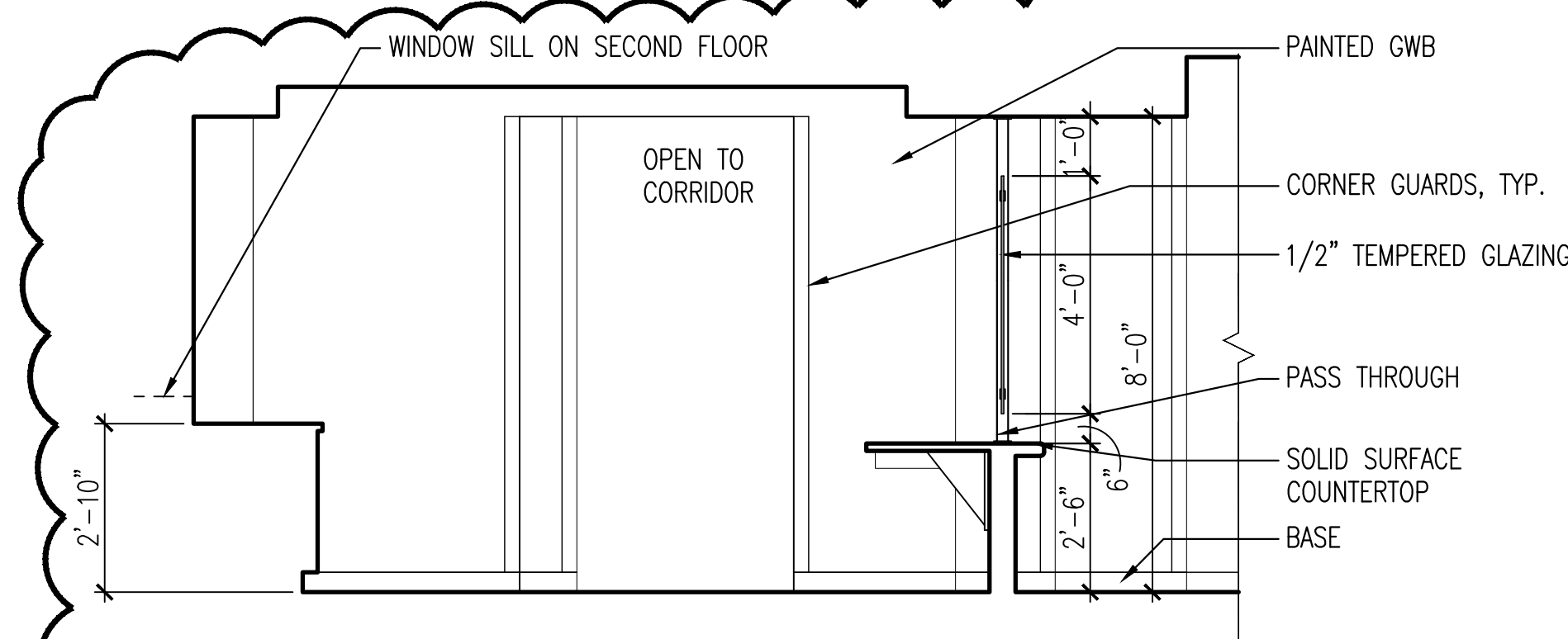
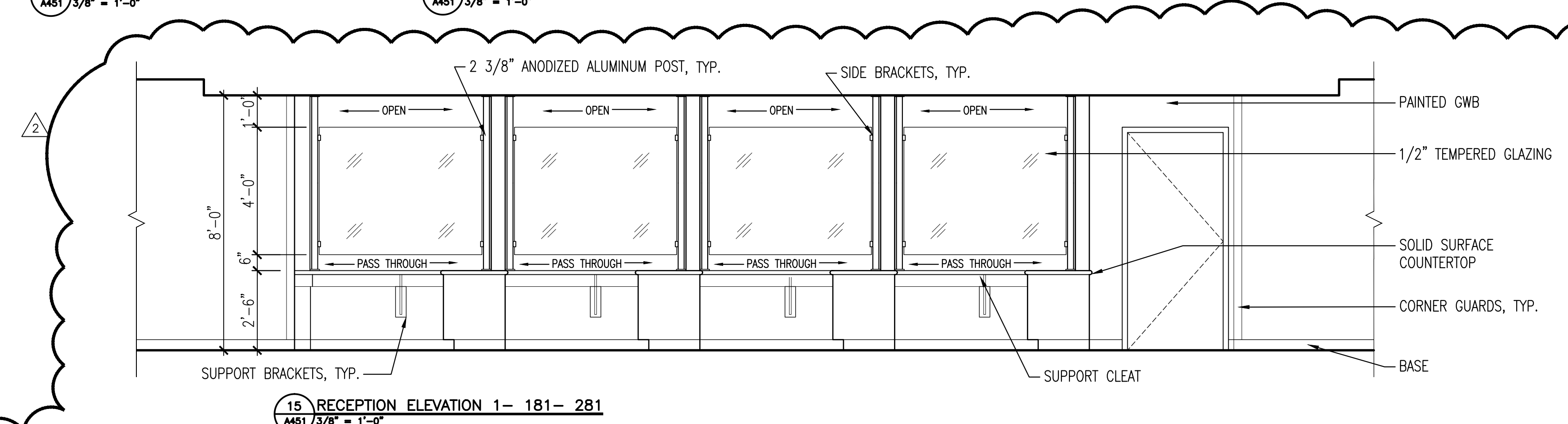
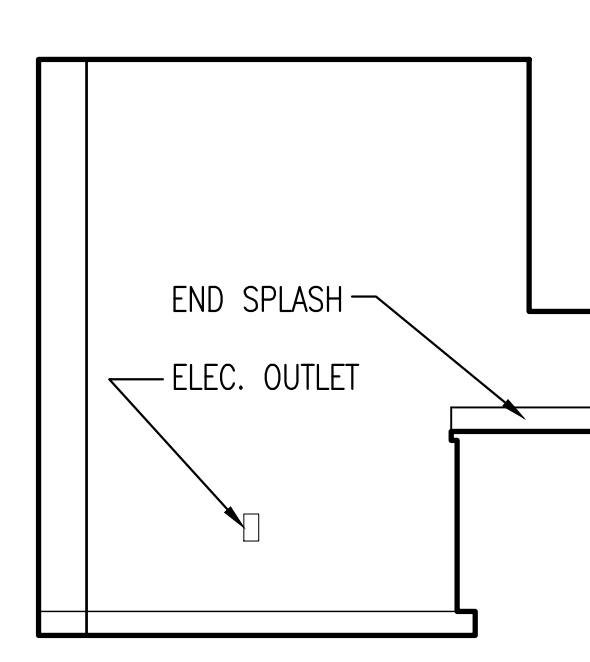
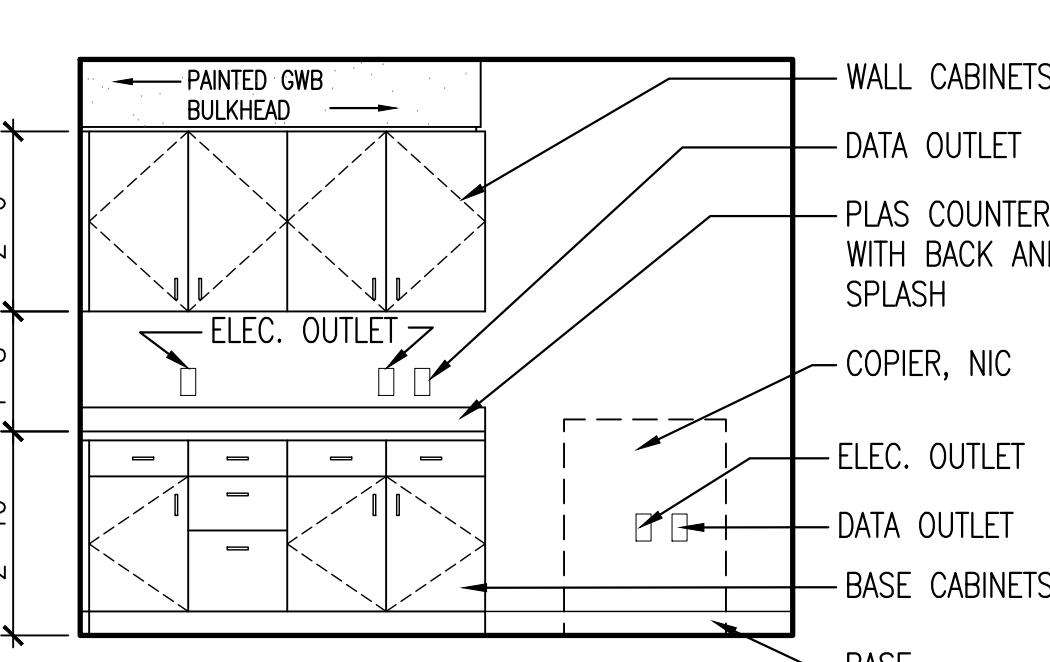
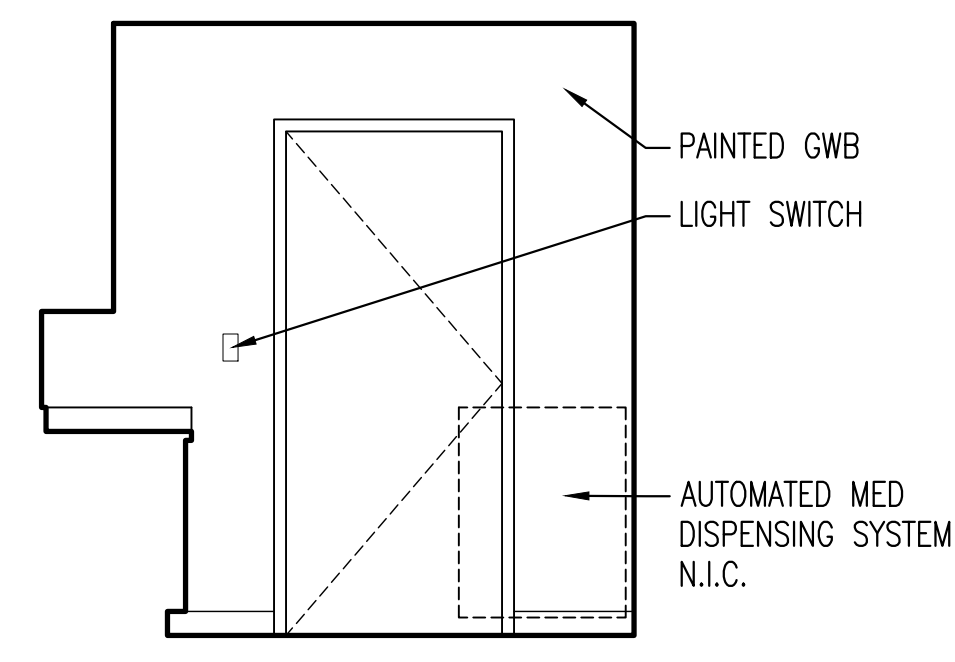
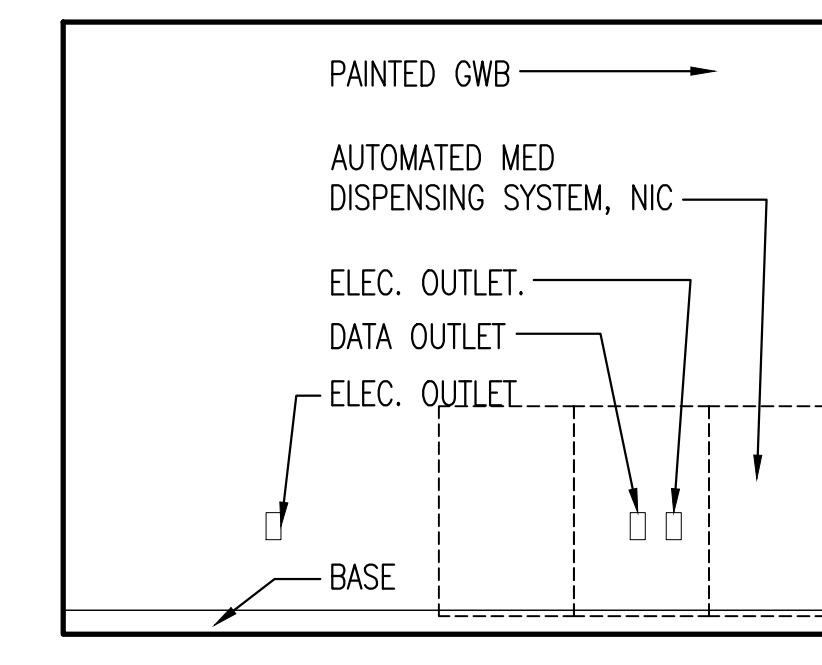
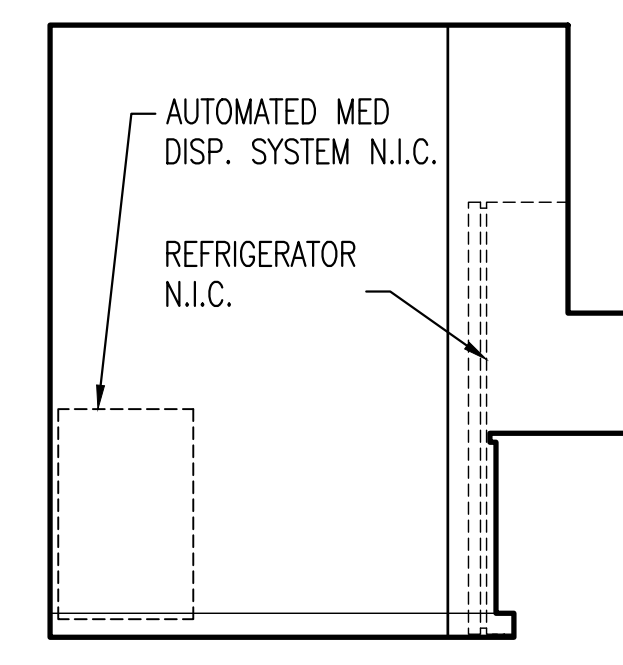
SIMILAR AT ROOMS 190, 267, 290

TOILET ACCESSORY SCHEDULE		
ITEM.	DESCRIPTION	BASIS OF DESIGN
A	ROBE HOOK	BOBRICK B-7672
B	METAL FRAMED MIRROR	BOBRICK B-165 18x36
C	18" GRAB BAR	
D	36" GRAB BAR	
E	42" GRAB BAR	
F	TOILET TISSUE DISPENSER	SEE NOTE 1
G	SEAT COVER DISPENSER	SEE NOTE 1
H	THERMAL PIPE SHIELD	TRUEBORG LAVGUARD2 #100
J	SOAP DISPENSER	SEE NOTE 1
K	WALL-MOUNTED PAPER TOWEL DISPENSER	SEE NOTE 1
L	SANITARY NAPKIN DISPOSAL	BOBRICK B-270
M	MOP/ BROOM HOLDER WITH SHELF	BOBRICK B-239
N	GOWN/GLOVES DISPENSER	SEE NOTE 1

NOTES:  
1. FURNISHED AND INSTALLED BY THE VA.  
2. REFER TO SHEET G002 FOR TYPICAL ACCESSORY MOUNTING HEIGHTS.



ELEVATIONS SIMILAR AT MEDICATION 196, 273, 296



ADDENDUM <u>2</u>	8/19/2016	CONSULTANTS:		ARCHITECT:	 <b>TOLAND MIZELL MOLNAR</b> 590 Means Street, NW, Ste.200 Atlanta, GA 30318 404.214.9774	Drawing Title: <b>INTERIOR ELEVATIONS</b> Approved: Chief Engineer	Project Title: <b>EXPAND OUTPATIENT CLINIC SERVICES</b> Location: <b>TUSCALOOSA AL.</b> Date: 01-22-2016	Project Number: <b>679-315</b> Building Number: <b>38</b> Drawing Number: <b>A451</b> Dwg. 62 of 187	<b>OFFICE OF CONSTRUCTION AND FACILITIES MANAGEMENT</b>  Department of Veterans Affairs
Revisions:	Date						Checked: DM Drawn:		