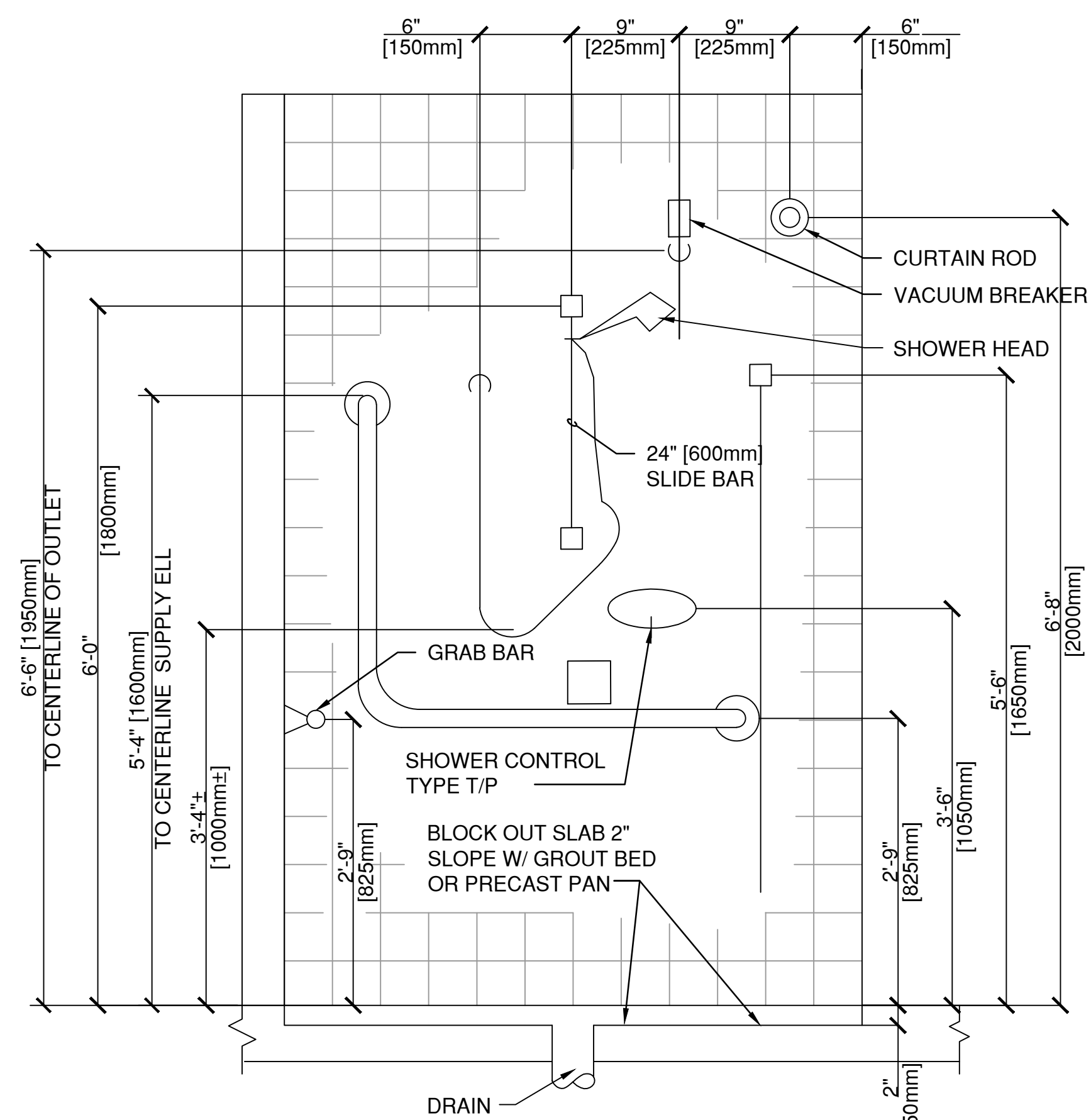
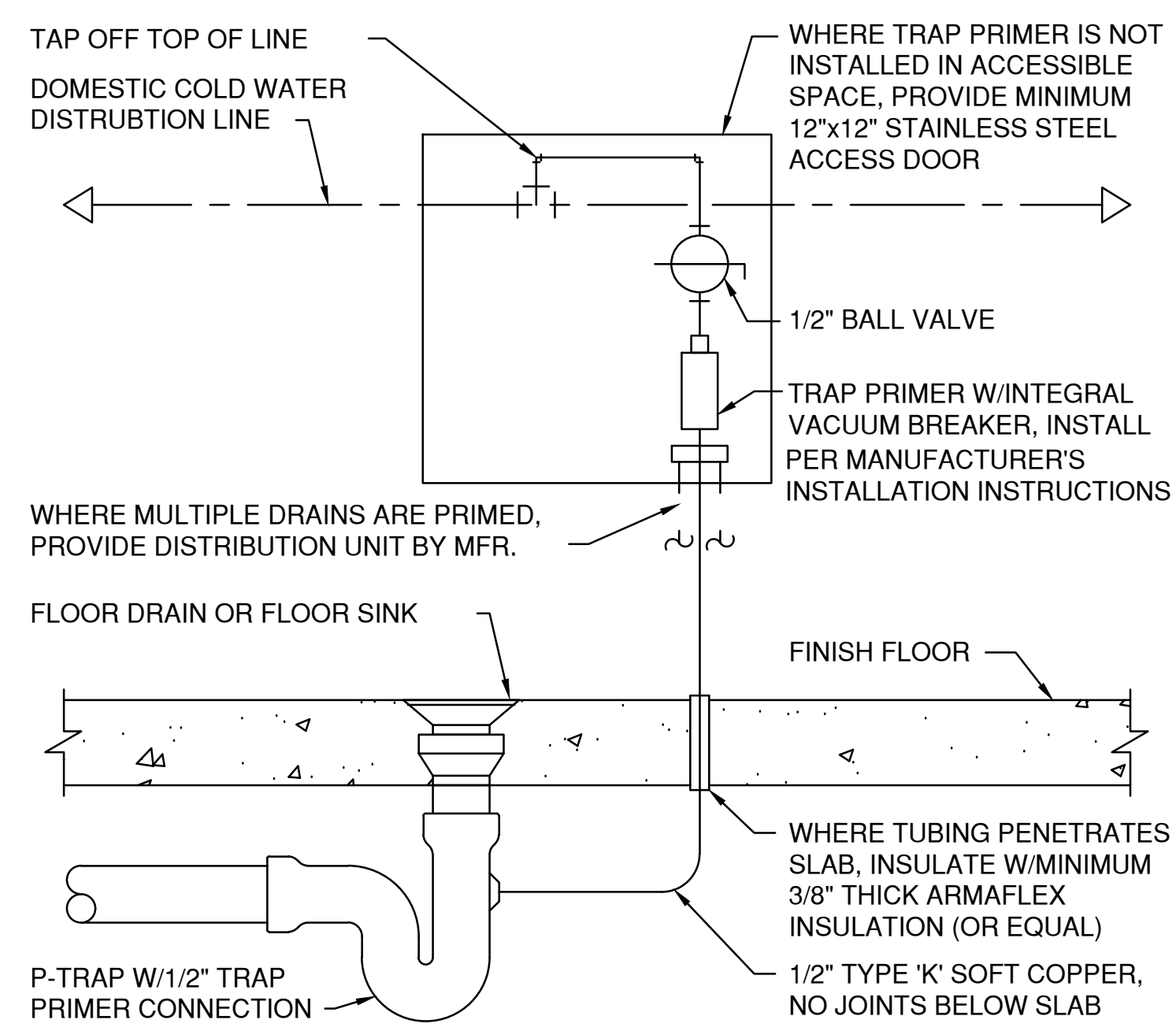


1 BACKFLOW PREVENTER PIPING
PL501 SCALE: NTS

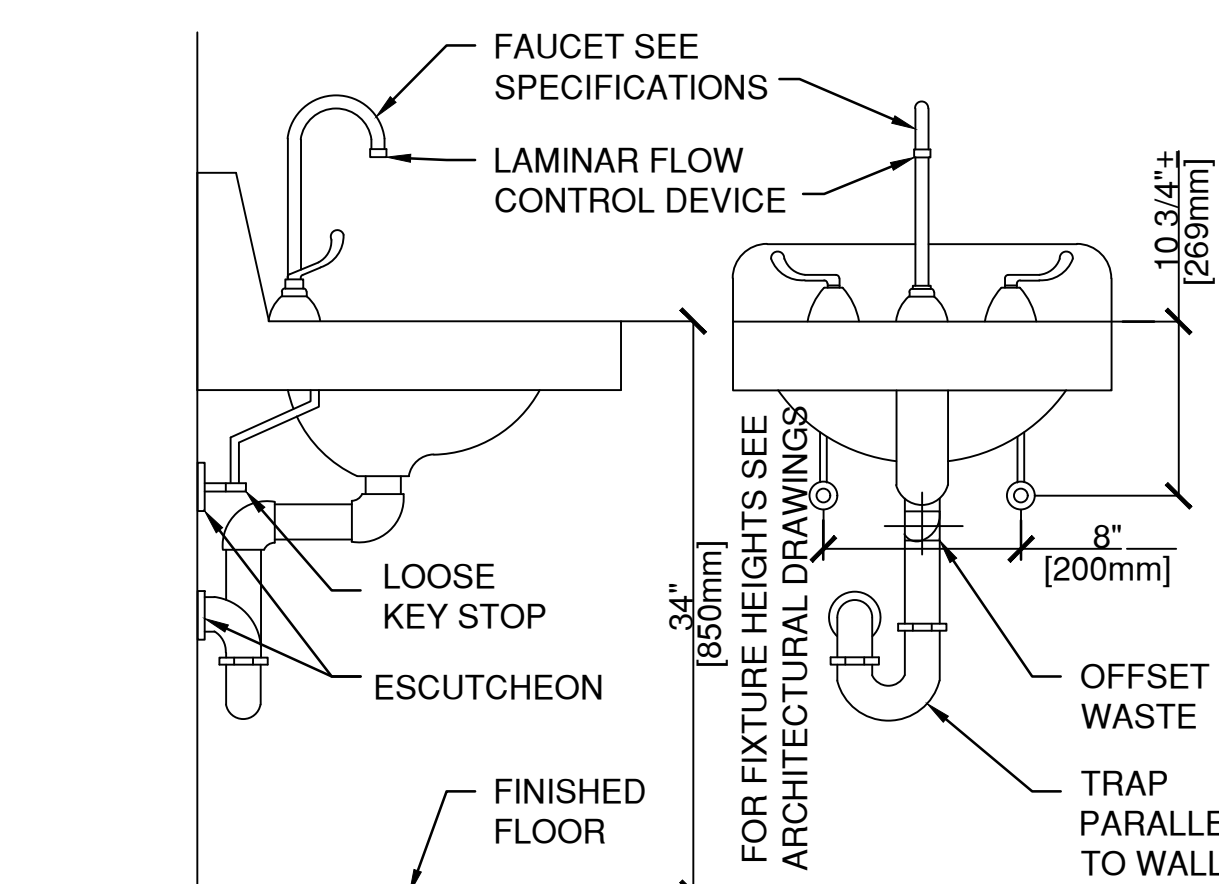


3 PATIENT SHOWER P-701
PL501 SCALE: NTS

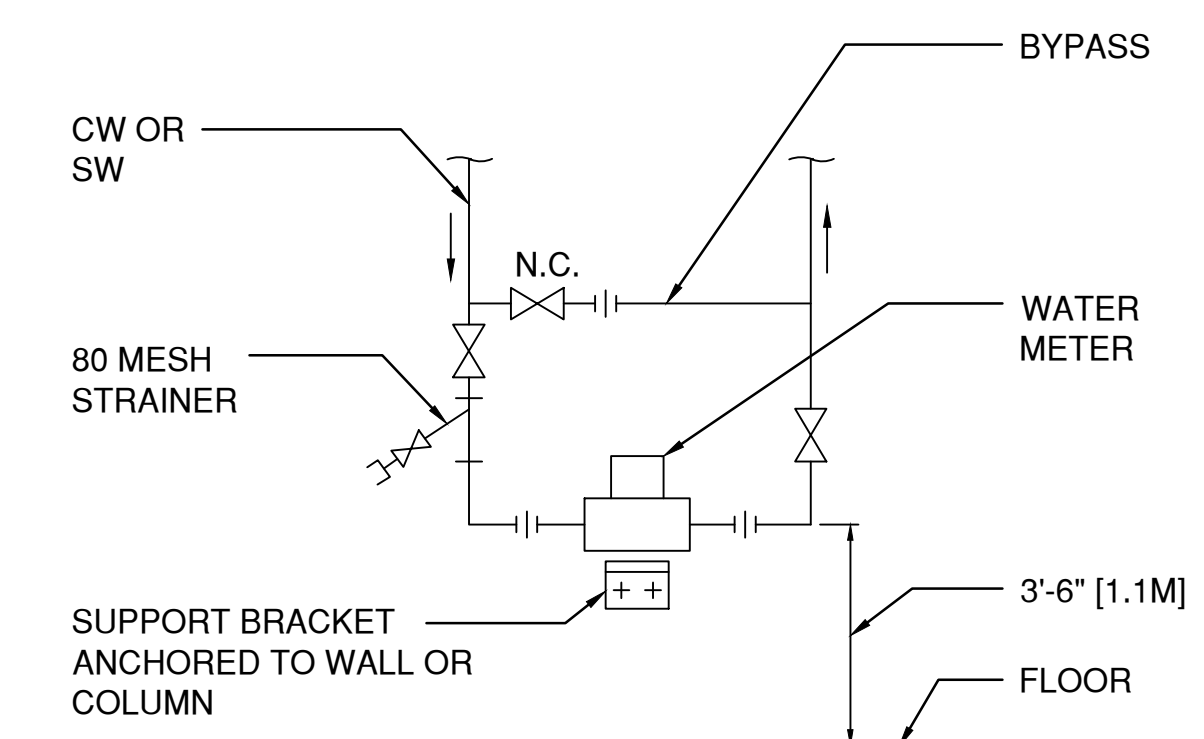


5 TYPE C FLOOR DRAIN
PL501 SCALE: NTS

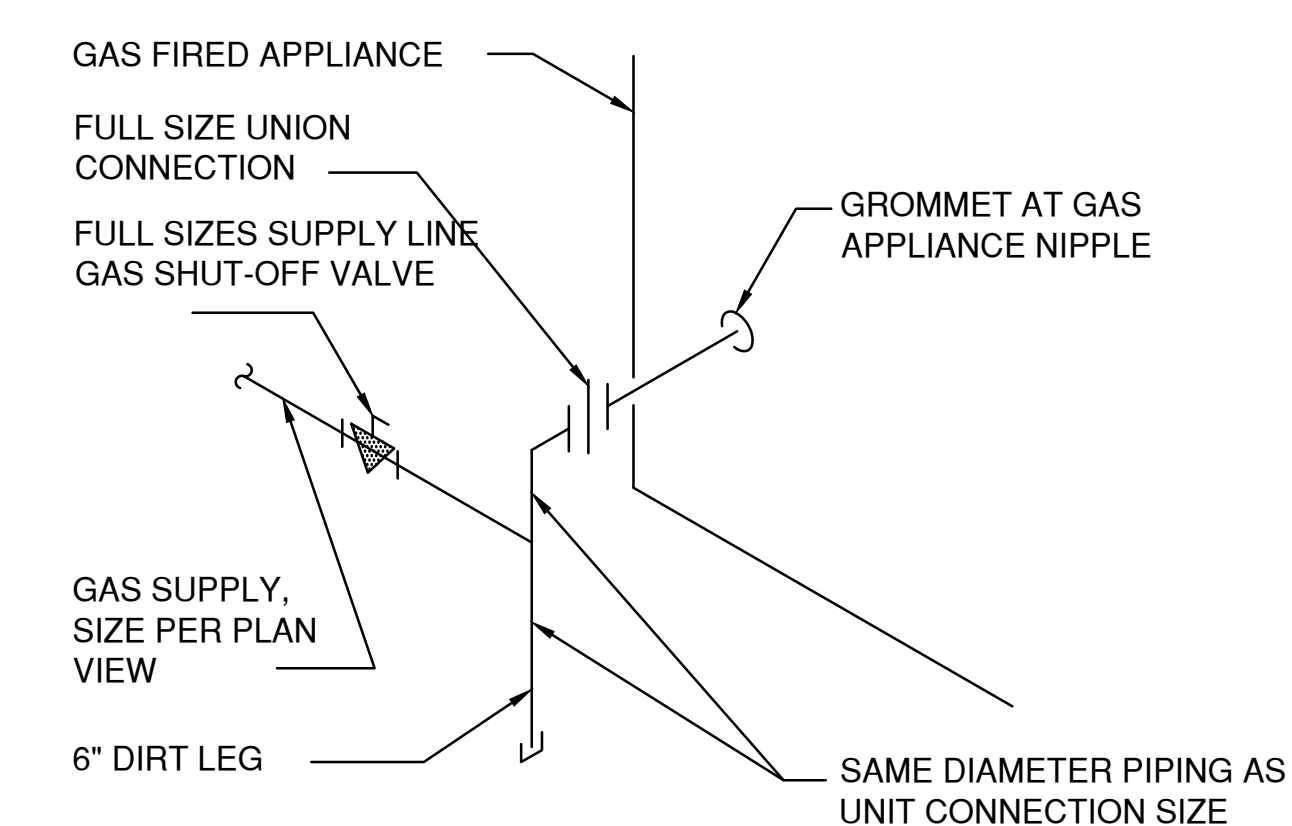
6 TRAP PRIMER
PL 501 SCALE: NTS



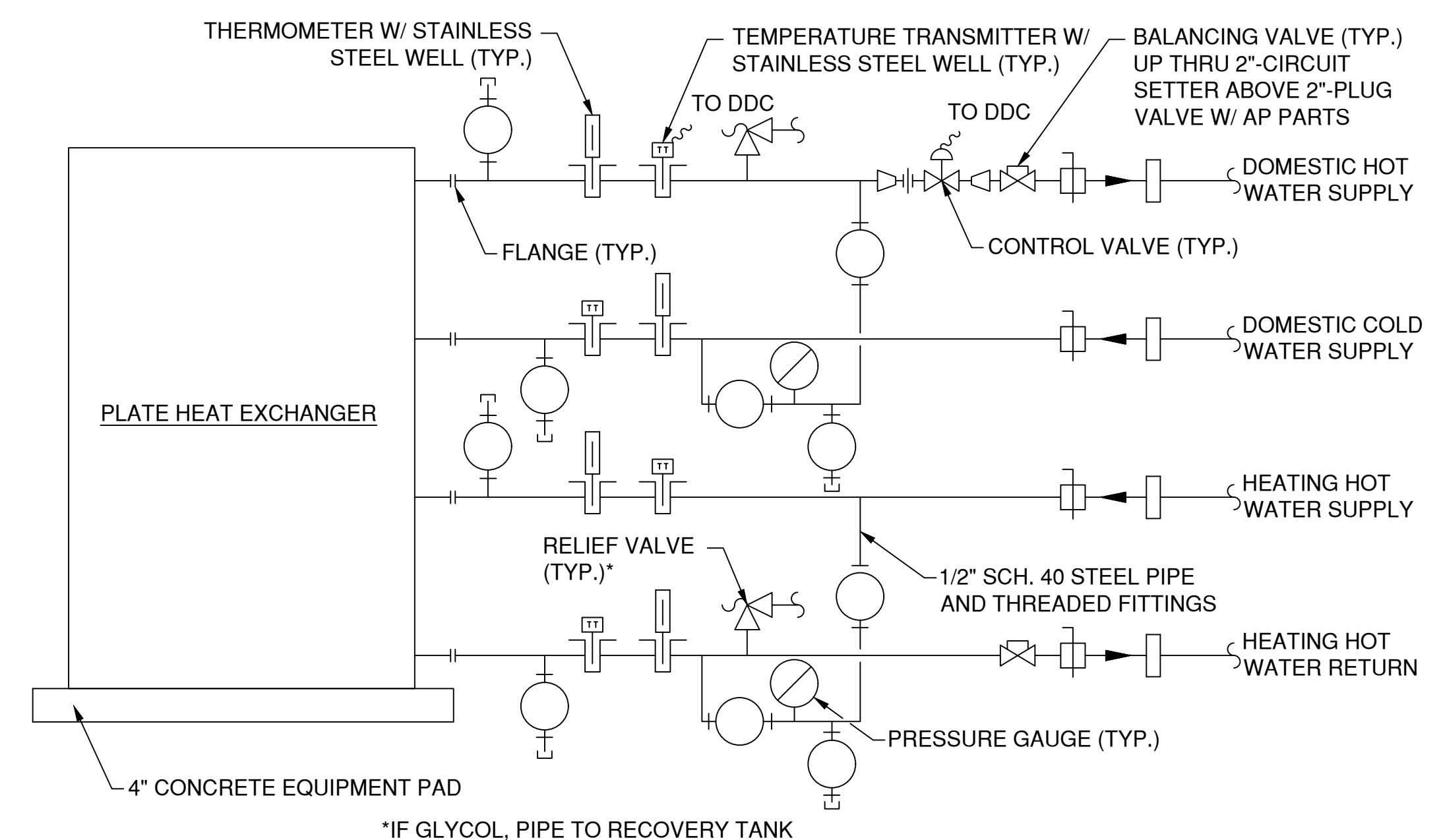
7 TYPICAL WHEELCHAIR LAVATORY
PL501 SCALE: NTS



8 WATER METER
PL501 SCALE: NTS

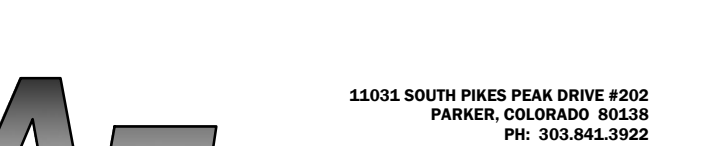



9 GAS APPLIANCE CONNECTION
PL501 SCALE: NTS



DOMESTIC HOT WATER PLATE AND
FRAME HEAT EXCHANGER PIPING DIAGRAM

10
PL501 SCALE: NTS

		CONSULTANT:	CONSULTANT:	ARCHITECT/ENGINEERS: <div><div></div><div>11031 SOUTH PUEBLO PEAK DRIVE #202 PARKER, COLORADO 80138 PH: 303.843.3922 WWW.AES-GRP.COM</div></div>	Drawing Title PLUMBING DETAILS	Project Title COMMUNITY LIVING CENTER	Project Number 442-12-357	Office of Construction and Facilities Management	
					Building Number COWBOY				
					Drawing Number				
					PL501				
					Dwg. of				
ADDENDUM (CONSTRUCTION DOCUMENTS)	AUGUST 2016						Approved: Project Director SYLVIE RUPP - CFM DIRECTOR FACILITIES/ENGINEERING PHONE: 307-778-7550x7267 FAX: 307-287-9725	Location CHEYENNE, WYOMING	
ADDENDUM (CONSTRUCTION DOCUMENTS)	MARCH 2016							Date MARCH 2016	Checked PFM
Revisions:	Date							 Department of Veterans Affairs	