

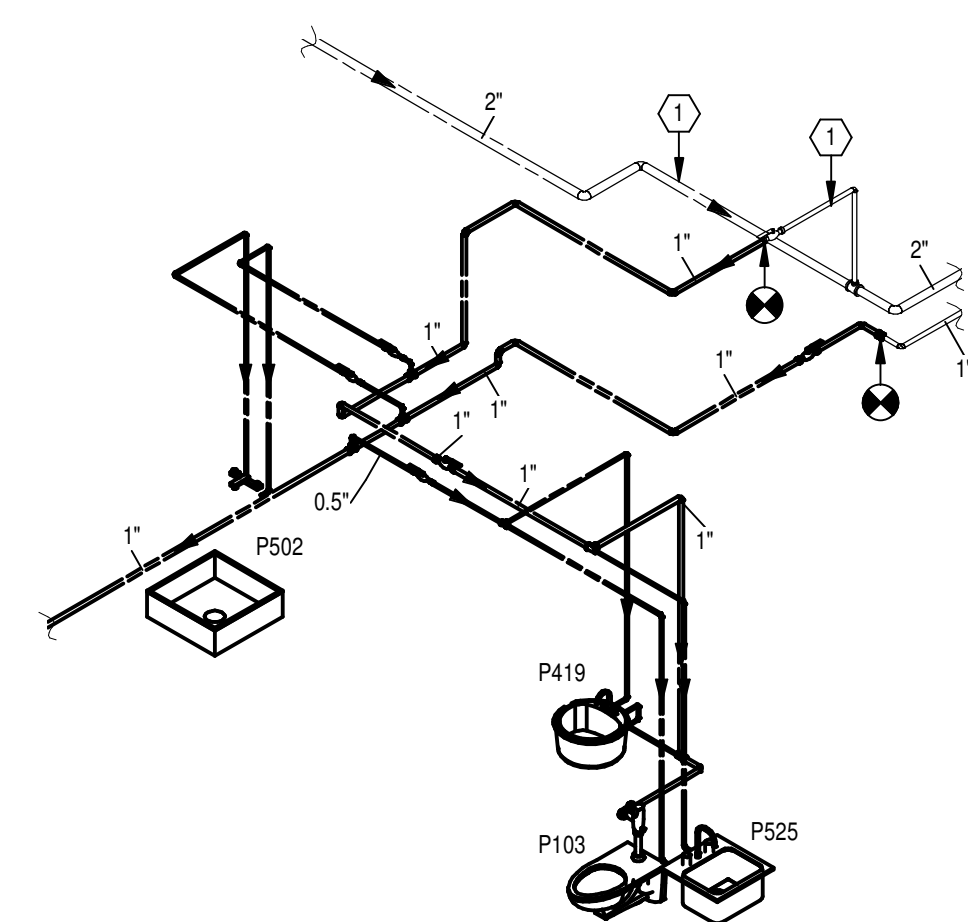
FULLY SPRINKLERED

GENERAL NOTES

A REFER TO SHEET P001 FOR LEGEND, SYMBOLS & INDEX OF DRAWINGS.

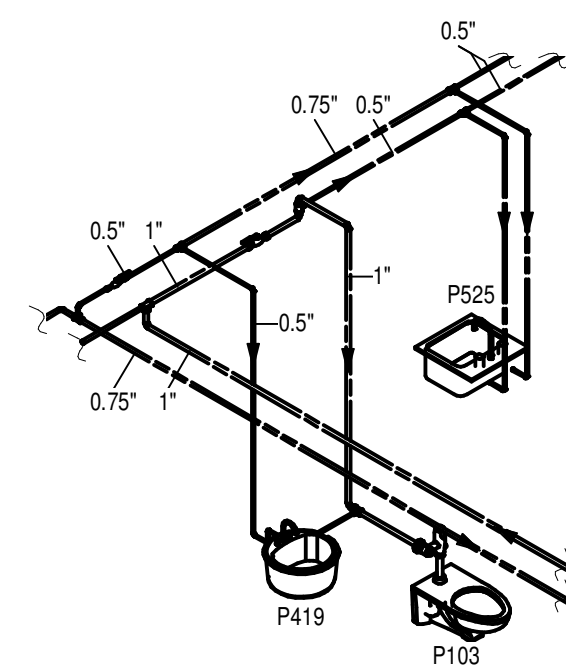
PLAN NOTES

- EXISTING TO REMAIN.
- REMOVE PORTION OF DHW PIPING SYSTEM. (SIZE AS INDICATED).
- SET FLOW CONTROLLER TO MAINTAIN 16 GPM.
- BOX MOUNTED TRANSFORMER LOCATED ABOVE THE CEILING TO CONTROL SENSOR OPERATED FAUCET ON FIXTURE(S) BELOW. 120V-1PH POWER WILL BE LOCATED IN A WIRING BOX ABOVE THE CEILING BY DIVISION 26. A 0.75" CONDUIT FOR LOW VOLTAGE WIRING STUBBED ABOVE THE CEILING AND EXTENDED DOWN TO AN ELECTRICAL WALL BOX LOCATED BELOW EACH LAVATORY WILL BE PROVIDED BY DIVISION 26. THE TRANSFORMERS AND LOW VOLTAGE WIRING SHALL BE BY DIVISION 22. COORDINATE ALL WORK WITH DIVISION 26.
- PIPING CONTINUED ON SHEET 330PP103.
- EXTEND PIPING FROM FIXTURE CARRIER TO CLEANOUT LOCATED IN WALL ADJACENT TO WATER CLOSET AT APPROXIMATELY 2'4" ABOVE FINISHED FLOOR.



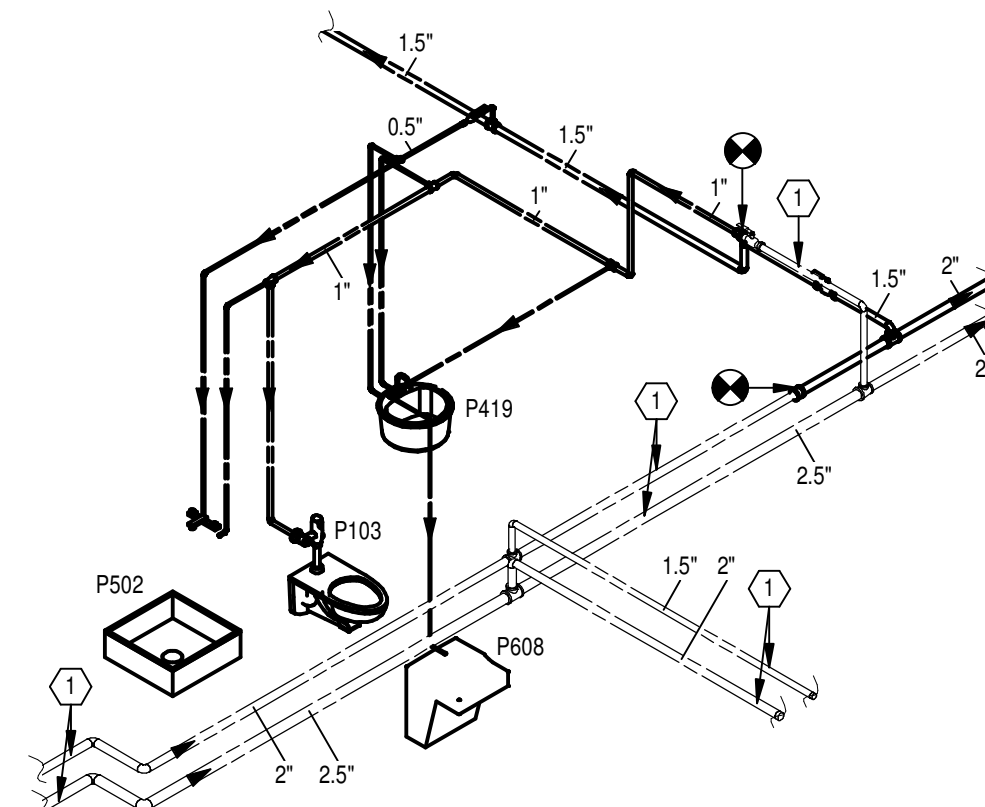
STAFF TOILET 2D-134

Scale: N.T.S.



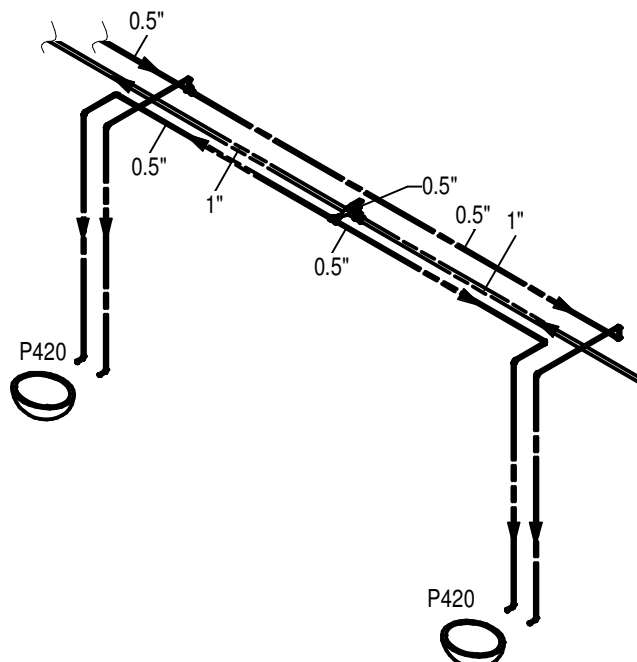
PATIENT TOILET 2D-112

Scale: N.T.S.



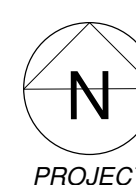
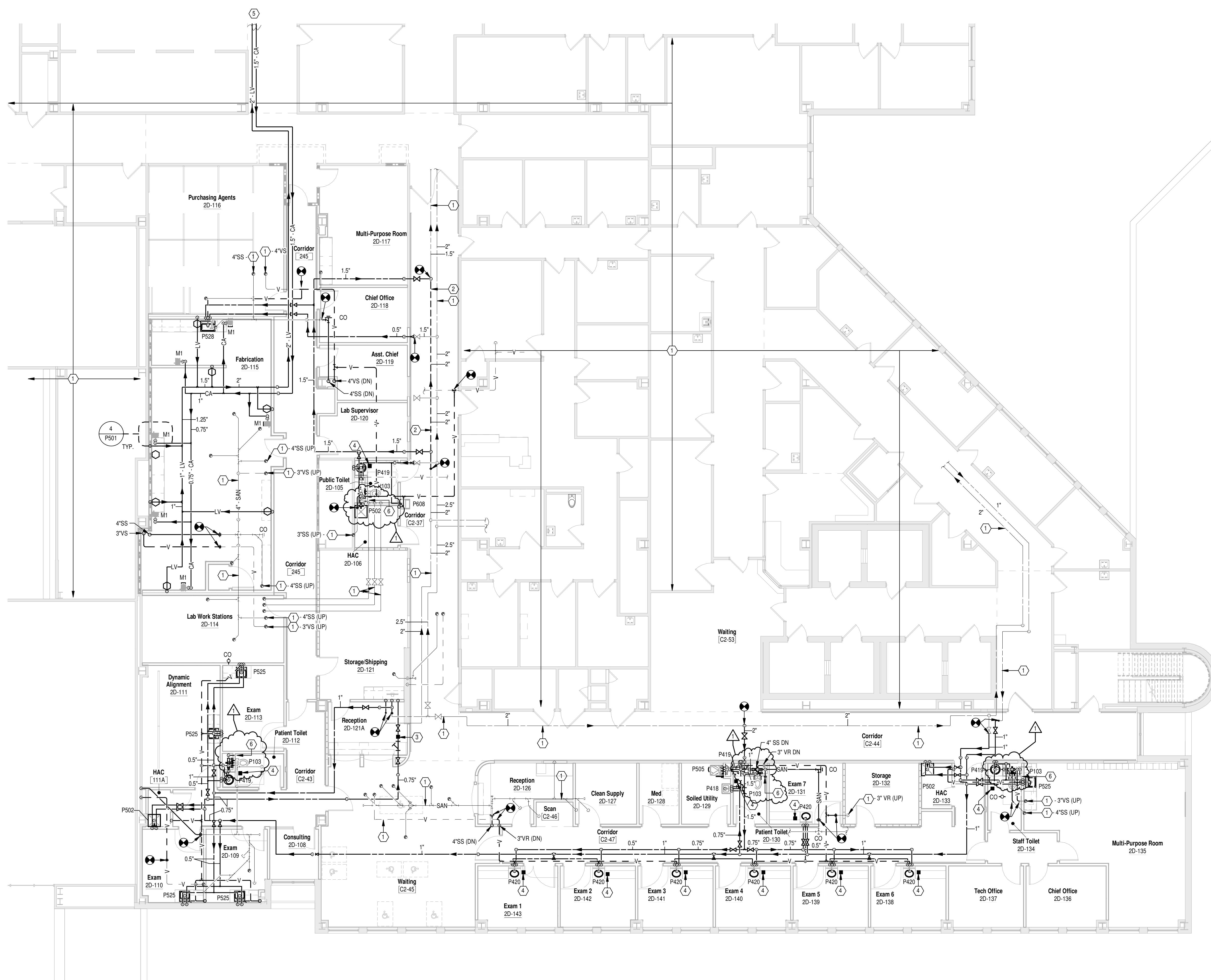
PUBLIC TOILET 2D-105

Scale: N.T.S.



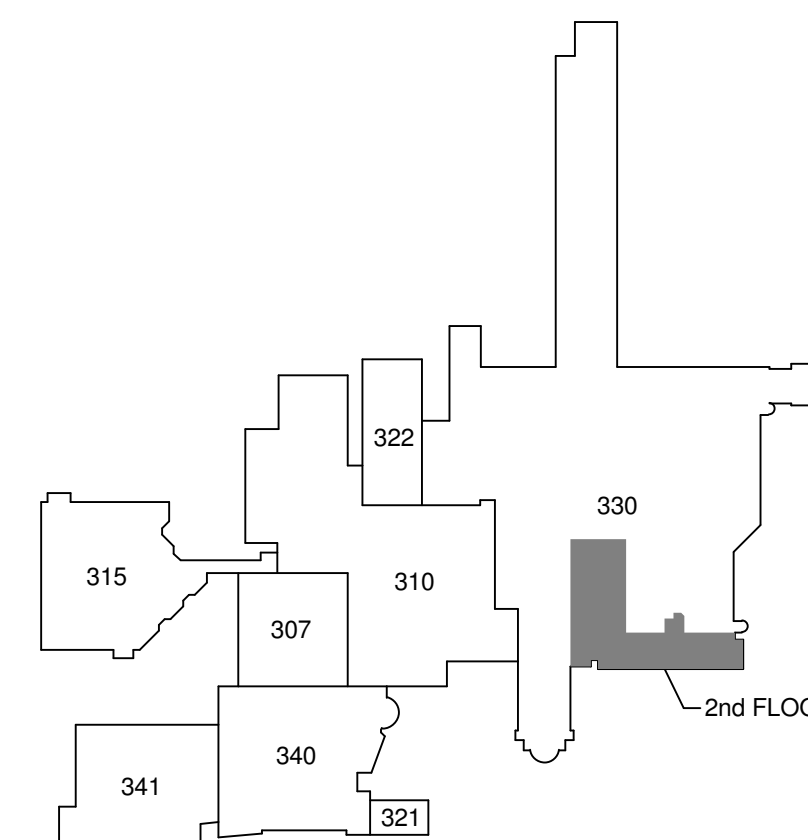
TYPICAL EXAM ROOM LAVATORY

Scale: N.T.S.



BUILDING 330 SECOND FLOOR PLAN - NEW WORK

Scale: 1/8" = 1'-0"



KEY PLAN

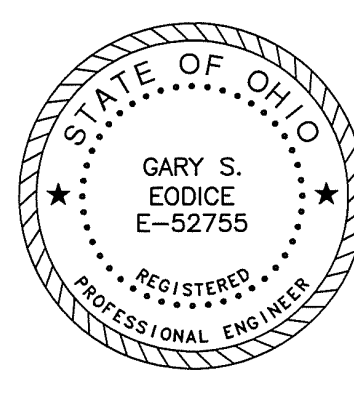
Scale: N.T.S.

8/18/2016 9:17:16 AM

Revisions	Amendment 1	Date
1		08.18.2016

CONSULTANTS:

Heapy Engineering
MEP Design Technology Planning Commissioning Energy
Nationally Recognized Leader in Sustainability
1400 W Dorothy Lane, Dayton, OH 45409-1310
Ph 937-224-0861 Fax 937-224-5777 www.heapy.com
Heapy Project No.: 2014-04034 Firm License No.: Q1528



ARCHITECT/ENGINEERS:

JOHN POE ARCHITECTS

3131 NEWMARK DRIVE,
SUITE 200
MIAMISBURG, OHIO 45342
937 461 3290 PHONE
jpo@johnpoe.com

Drawing Title

SECOND FLOOR PLAN - NEW WORK

Approved: Project Director

Project Title

RELOCATE PROSTHETICS
AND PODIATRY CLINICS

Location

Dayton, Ohio

Date

05.16.2016

Checked

CSS

Drawn

DPB

Project No.

VA Project No. 552-15-502
JPA Project No. 14006.00

Building Number

330

Drawing Number

330PP102

Dwg. of

Office of
Construction
and Facilities
Management

