

DOOR/DOOR FRAME & WINDOW FRAME FINISH SCHEDULE					
TAG	DOOR	FRAME	REMARKS		
01	3'-4", 3'-0", 2'-6"	7'-0"	NIC	PT-4	WOOD DOOR W/ METAL FRAME
02	3'-6", 3'-0"	7'-0"	PT-4	PT-4	METAL DOOR W/ METAL FRAME
03	6'-0"	7'-0"	PT-4	PT-4	DOUBLE METAL DOOR W/ METAL FRAME
04	6'-0"	7'-0"	PT-4	PT-4	DOUBLE WOOD DOOR W/ METAL FRAME
06	N/A	7'-0"	PT-4	PT-4	METAL FRAME ONLY
07	-	-	-	PT-4	*WINDOW METAL FRAME ONLY

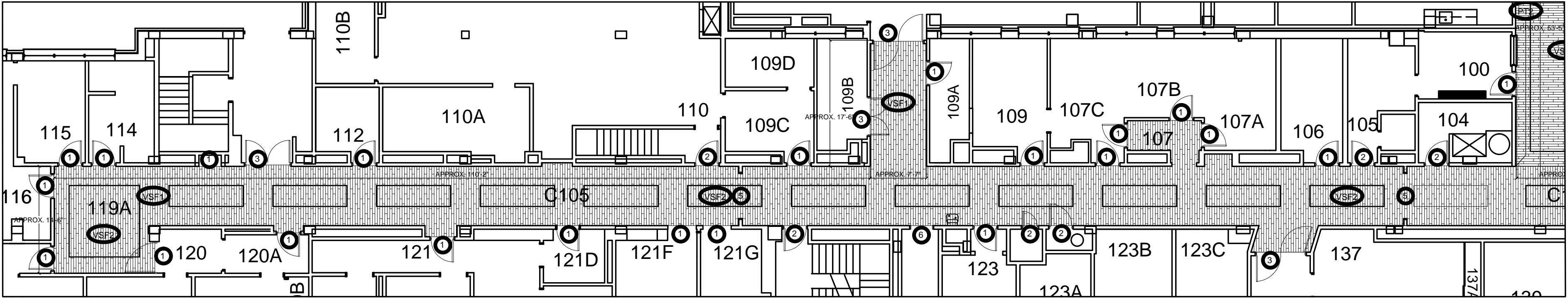
ROOM FINISH SCHEDULE NOTES:
ABBREVIATIONS:
E = EXISTING
U.N.O. = UNLESS NOTED OTHERWISE
NIC = NOT IN CONTRACT
TIME = NEW TO MATCH EXISTING
ACT-1 = NEW ACOUSTIC CEILING TILE
VCT = VINYL COMPOSITION TILE
GCT = GLAZED COVE TILE
TERR = TERRAZZO
VSF-1 = SHEET VINYL FLOORING
WOOD PATTERN: TROPICAL BEECH/LIGHTER WOOD - PATTERN MUST BE SELECTED AND APPROVED BY VANIECS INTERIOR DESIGNER
VSF-2 = SHEET VINYL FLOORING
WOOD PATTERN: DARK OAK/DARK WOOD - CONTRASTING COLOR PATTERN MUST BE SELECTED AND APPROVED BY VA INTERIOR DESIGNER
LCT-1 = LINOLEUM COMPOSITE TILE (WITH

RECYCLABLE CONTENT)
RCB-1 = RUBBER COVE BASE
PT-1 = SHERWIN WILLIAMS PAINT
SW 6135 ECRU OR EQUAL - EGGSHELL
FINISH / NO VOC PAINT ONLY
PT-2 = SHERWIN WILLIAMS PAINT
SW 6500 OPEN SEAS OR EQUAL - EGGSHELL
FINISH / NO VOC PAINT ONLY
*ACCENT WALLS ONLY
PT-3 = SHERWIN WILLIAMS PAINT
SW 7728 SPROUT OR EQUAL - EGGSHELL
FINISH / NO VOC PAINT ONLY
*ACCENT WALLS ONLY
PT-4 = CEILING PAINT- SHERWIN WILLIAMS

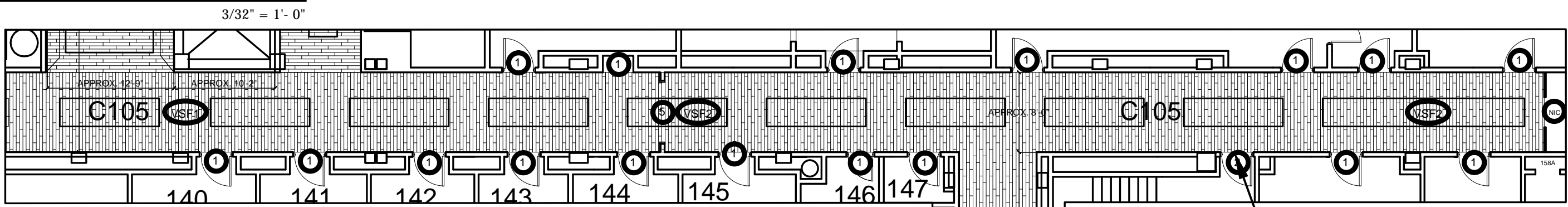
SW 7008 ALABASTER OR EQUAL - EGGSHELL
FINISH / NO VOC PAINT ONLY
PT-5 = DOOR FRAMES, WINDOW FRAMES,
AND ELEVATOR DOOR FRAMES.
COLOR: TBD TO MATCH RESILIENT RUBBER BASE COLOR
EGGSHELL FINISH/NO VOC PAINT ONLY
PT-6 = PAINTED COVED BASE COLOR - HIGH
PERFORMANCE COATING - COLOR: TBD TO
MATCH RESILIENT RUBBER BASE COLOR - EGGSHELL
FINISH/NO VOC PAINT ONLY
ALL INTERIOR FINISHES MUST BE APPROVED
BY VANIECS INTERIOR DESIGNER.
*OR EQUAL: THE INCLUSION OF A BRAND NAME AND
SPECIFIC COLOR IS FOR THE EXPRESS PURPOSE OF
OBTAINING THIS SPECIFIC COLOR, WHICH IS FURTHER
DEFINED BY ITS SALIENT CHARACTERISTICS: "HUE,
VALUE AND INTENSITY".
ANY OTHER COLOR MUST BE APPROVED BY VA
INTERIOR DESIGNER

FINISH GENERAL NOTES:
1. COVER AND PROTECT FROM PAINT: CORNER
GUARDS, HANDRAILS, BUILT-IN CABINETS (I.E. FIRE
EXTINGUISHERS, FIRE ALARM CABINETS, ETC.),
OUTLETS (ELECTRICAL AND DATA), COVER PLATES,
PULL STATIONS, ETC.
2. PATCH AND REPAIR ALL WALLS PRIOR TO PAINTING.
3. PAINT ALL WALL SURFACES (NEW AND EXISTING),
PLASTER/GYPSUM CEILINGS AND BULK HEADS,
PLASTER/GYPSUM WINDOW SILLS, NOTED DOORS,
AND ALL DOOR FRAMES AS NOTED ON THE ROOM
FINISH SCHEDULE. PREP SURFACES PER
MANUFACTURERS' RECOMMENDATIONS.
3.1. ONE (1) COAT PRIME
3.2. TWO (2) COATS PAINT
4. DO NOT REMOVE OR PAINT RATING TAGS ON DOORS
AND/OR DOOR FRAMES.
5. PROTECT ALL DOOR HARDWARE FROM PAINT.
6. CEILING GRID TO REMAIN UNDAMAGED AND
UNALTERED. (EXCEPT 5TH FLOOR DEMO) PROTECT
FROM PAINT.
7. REMOVE ALL EXISTING DOOR SILENCERS AND
REPLACE WITH NEW AFTER PAINTING OF ALL DOOR
FRAMES. INSTALL NEW IN ALL LOCATIONS THAT OLD
WAS REMOVED.
8. ALL DIMENSIONS ARE APPROXIMATE. CONTRACTOR
TO FIELD VERIFY.

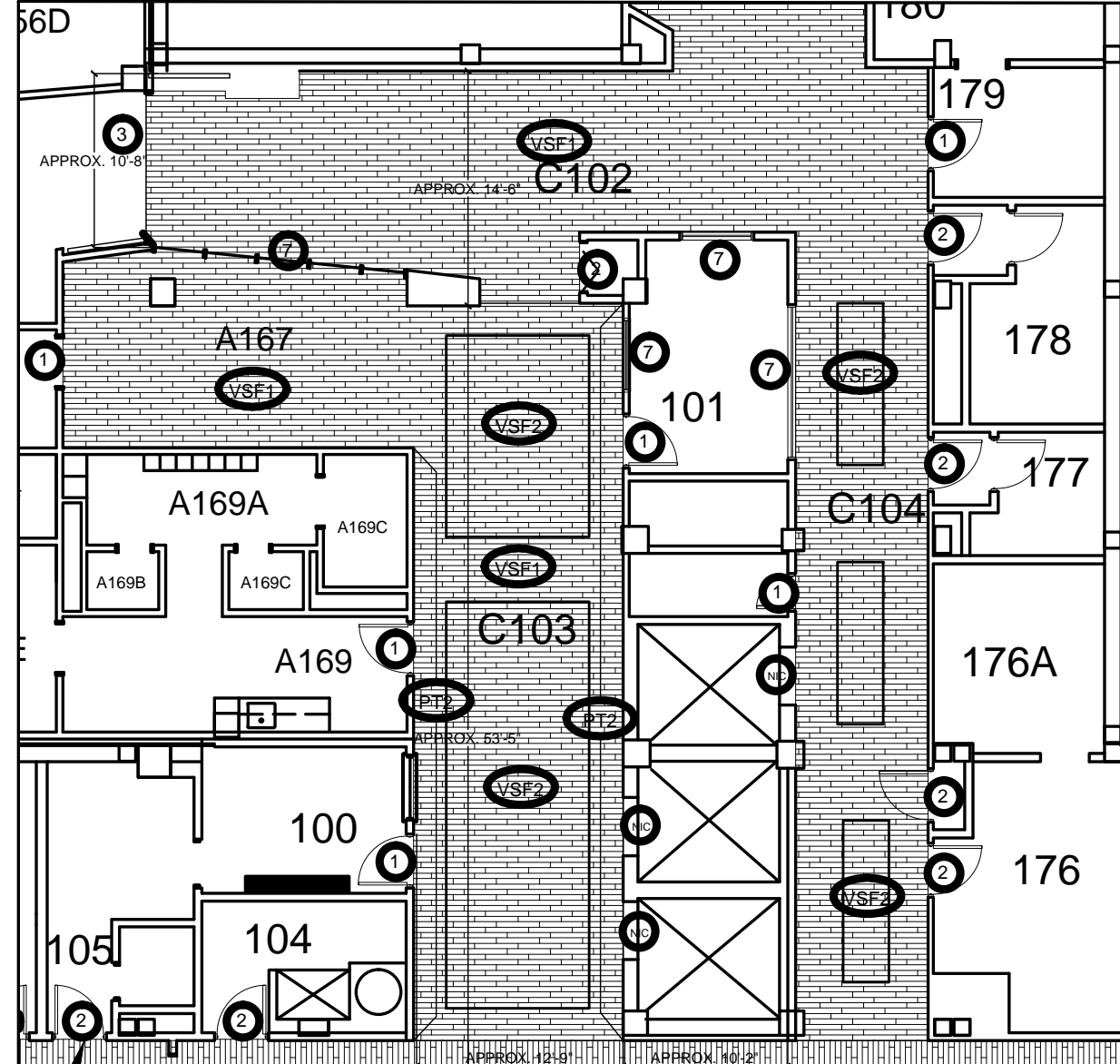
FINISH PLAN NOTES:
1. PAINT ENTIRE DOOR FRAME AND/OR WINDOW FRAME (INSIDE AND OUT).
PREP PER PAINT MANUFACTURERS' RECOMMENDATIONS.
2. PAINT ENTIRE DOOR AND ENTIRE DOOR FRAME. PREP PER PAINT
MANUFACTURERS' RECOMMENDATIONS.
3. PREP AND PAINT ELEVATOR DOOR FRAMES (FRAMES ONLY).
4. USE NO VOC PAINT ONLY.
FLOORING NOTES:
1. PREPARE FLOOR, PROVIDE AND INSTALL VINYL SHEET
GOODS WITH BREAK PATTERN ON CORRIDORS AS
INDICATED. CONTRACTOR TO FIELD VERIFY.
2. PROVIDE AND INSTALL FLOOR LEVELING COMPOUND AS
NECESSARY TO PREPARE THE FLOOR TO RECEIVE NEW
FINISHES.
3. PROVIDE AND INSTALL NEW RUBBER COVE BASE (RCB) -
CONTRACTOR TO FIELD VERIFY.
4. PROVIDE AND INSTALL MANUFACTURER RECOMMENDED
TRANSITIONS WHERE NEW SHEET FLOORING MEETS
EXISTING CARPET FLOORING.
5. USE WATER-BASED MASTIC ADHESIVES.
6. REDUCE OUTGASSING OF SHEET VINYL FLOORING AND
RUBBER BASE BY UNROLLING IT
OUTDOORS/VENTILATED AREA PRIOR TO ON SITE
INSTALLATION.



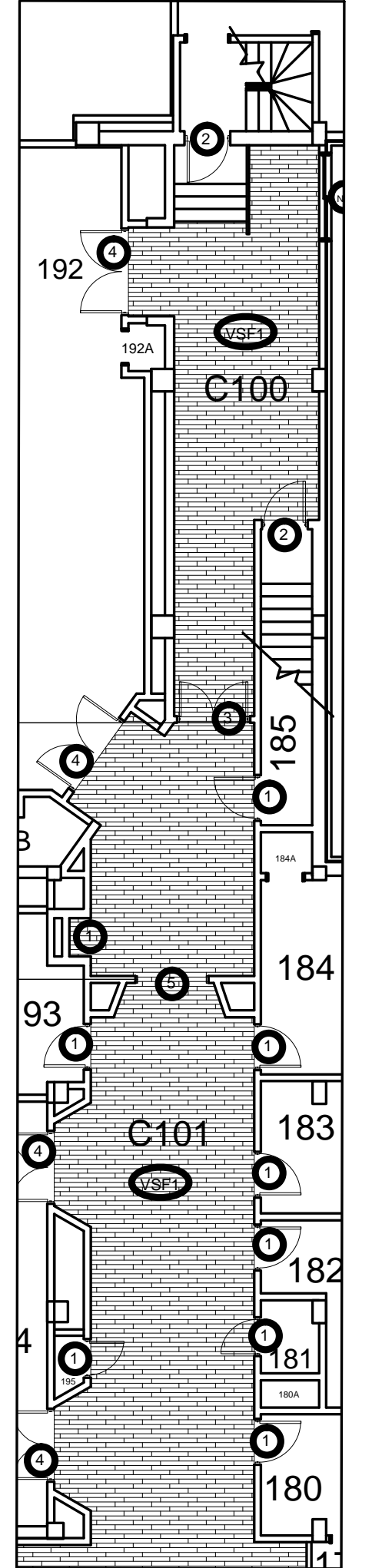
3 PARTIAL FINISH PLAN - FIRST FLOOR WEST CORRIDOR



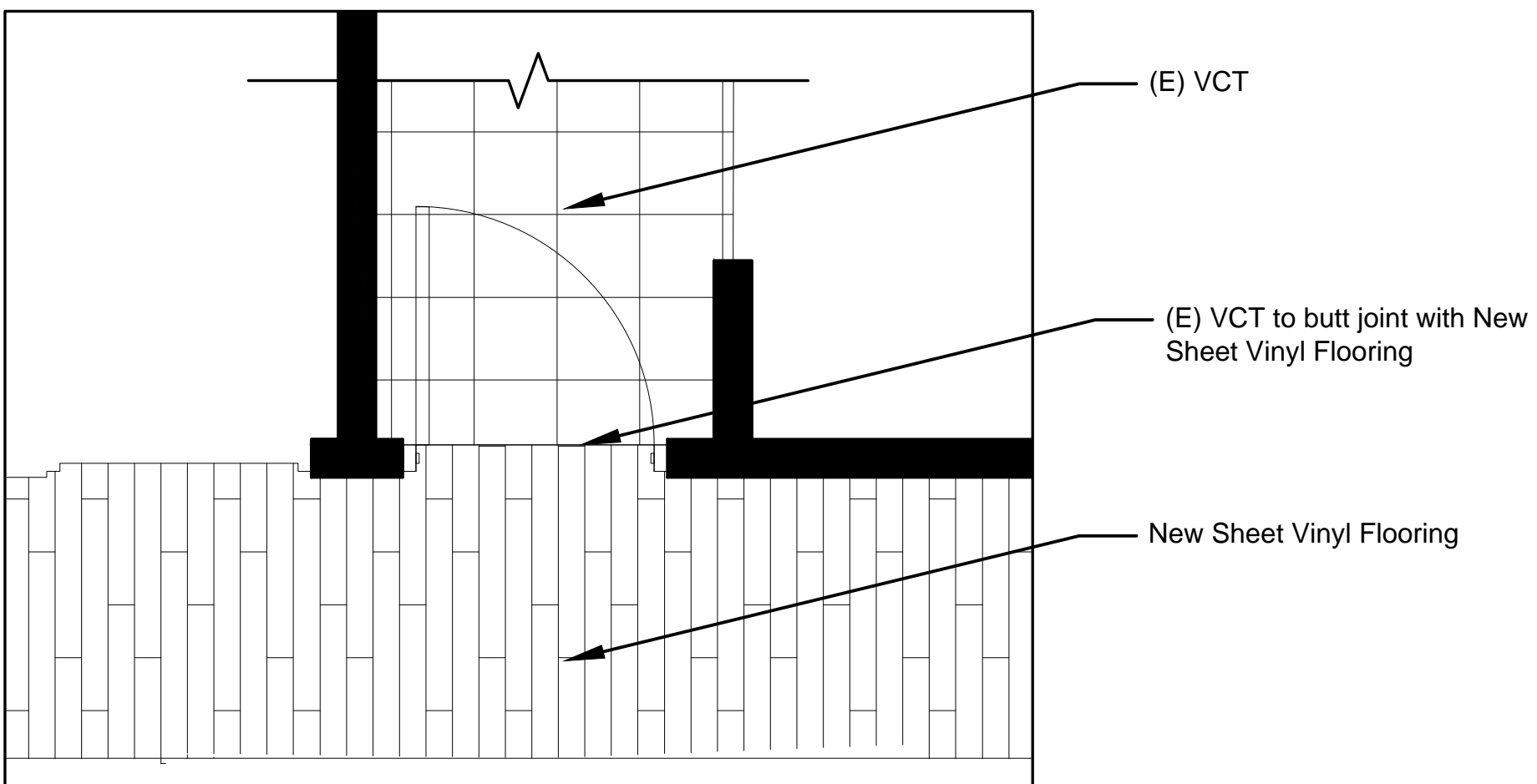
4 PARTIAL FINISH PLAN - FIRST FLOOR EAST CORRIDOR



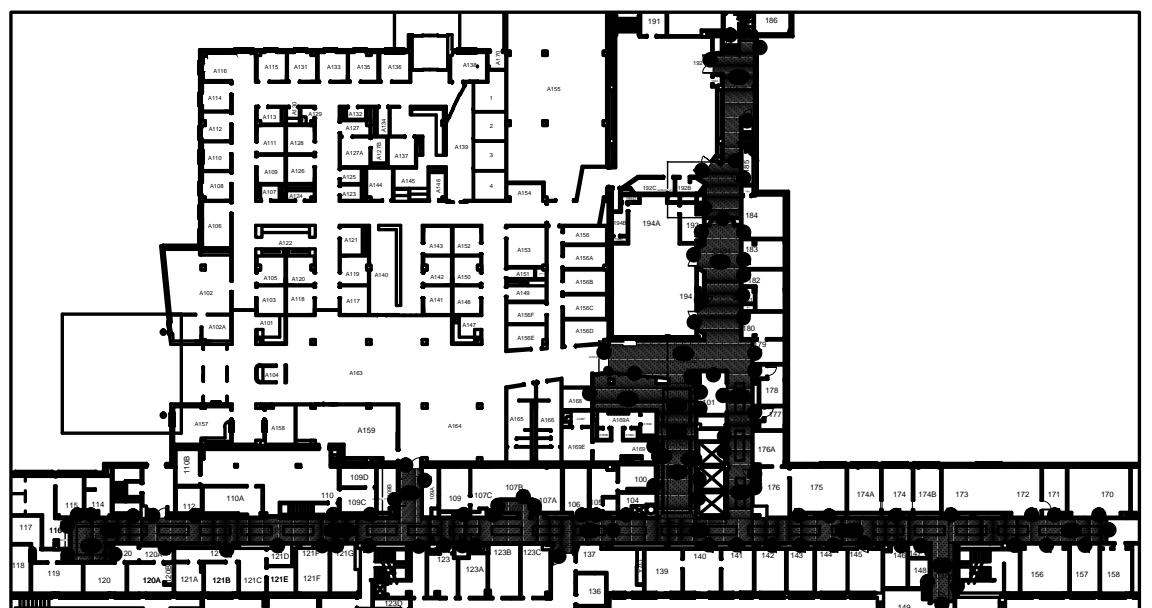
2 PARTIAL FINISH PLAN - FIRST FLOOR



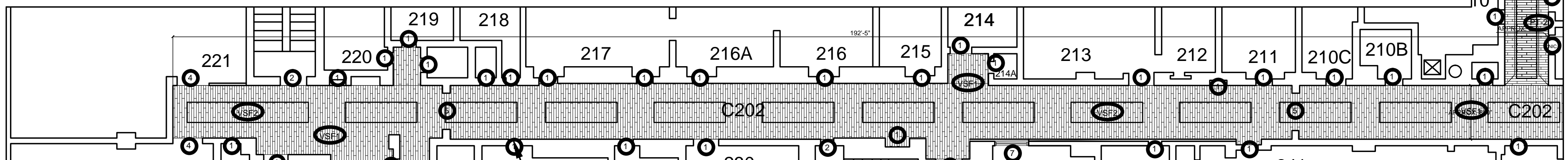
1 PARTIAL FINISH PLAN - FIRST FLOOR



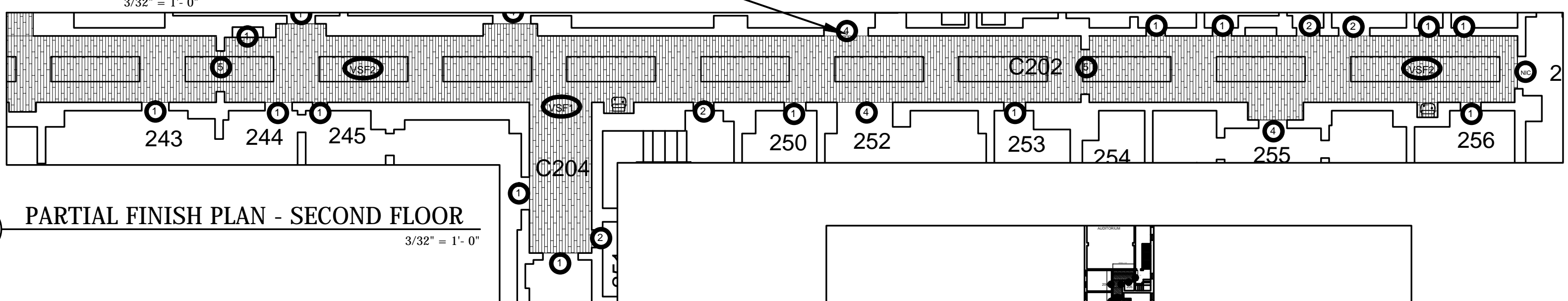
FLOORING DETAIL



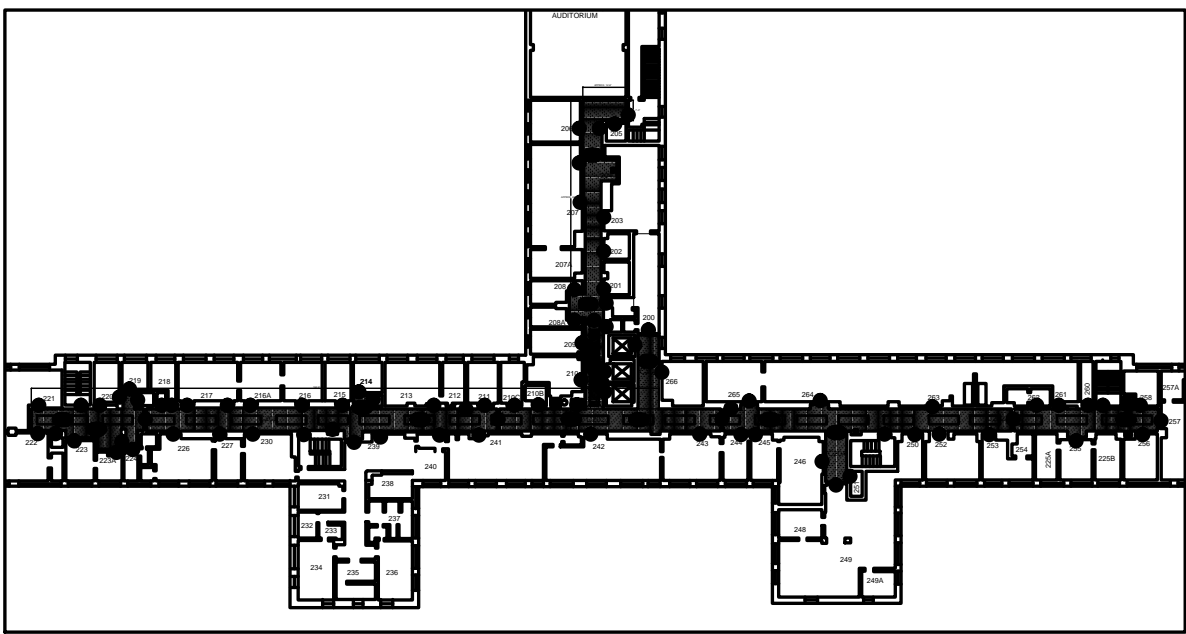
KEY PLAN FIRST FLOOR



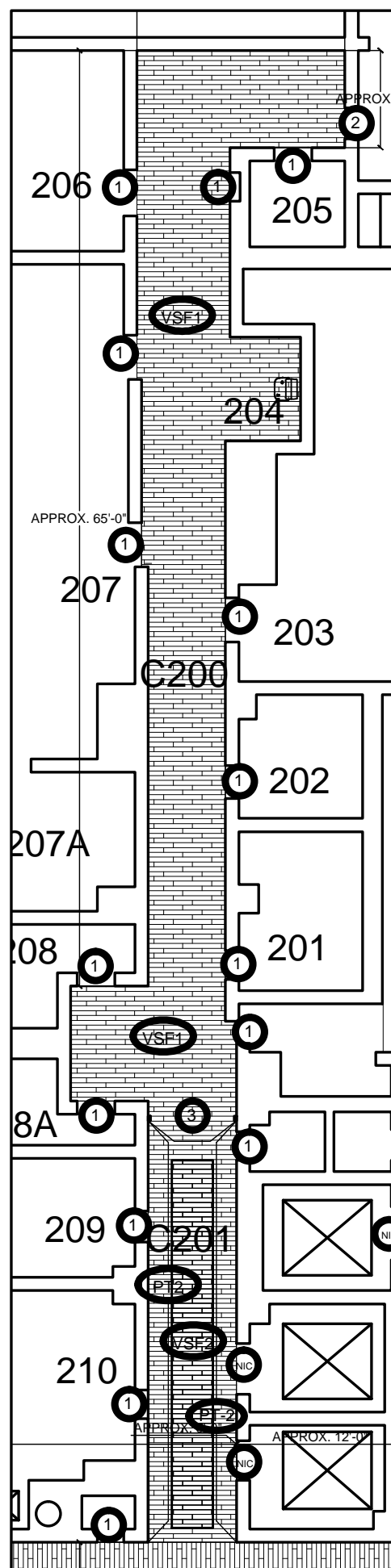
2 PARTIAL FINISH PLAN - SECOND FLOOR



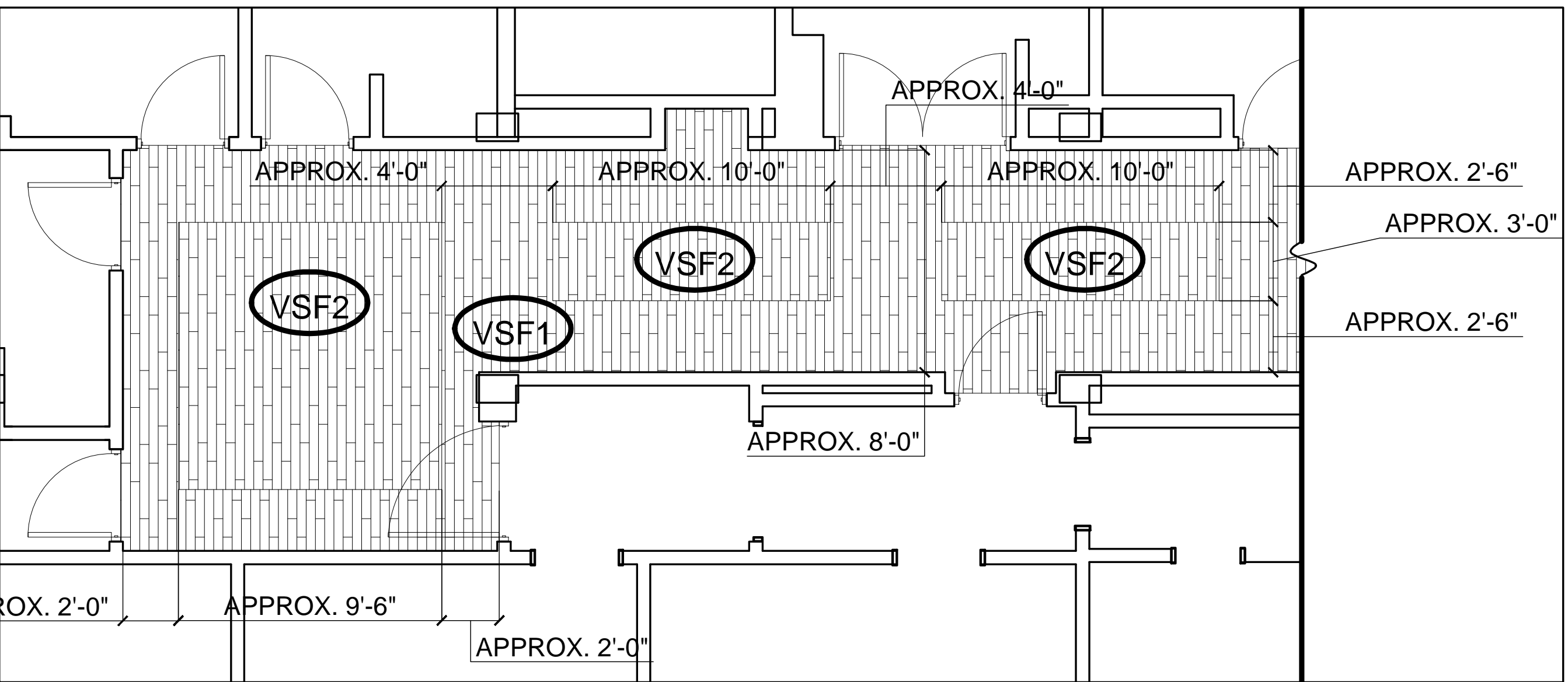
3 PARTIAL FINISH PLAN - SECOND FLOOR



KEY PLAN SECOND FLOOR




1 PARTIAL FINISH PLAN - SECOND FLOOR



FLOORING PATTERN

BID ITEM # 1

		VA Northern Indiana Health Care System, Fort Wayne 2121 Lake Avenue Fort Wayne, IN 46805	Approved: Medical Center Director Daniel D. Hendee, FACHE	Drawing Title Finish Plan - 1st and 2nd Floor	Project Title Interior Halls and Walls	Project Number 610A4-11-149		
			Approved: Associate Director for Operations Helen Rhodes			Building Number 1		
			Approved: Engineering Service Charles Applewhite			Drawing Number A-201		
Revisions:	Date				Date 08/05/2011		Checked CDA	