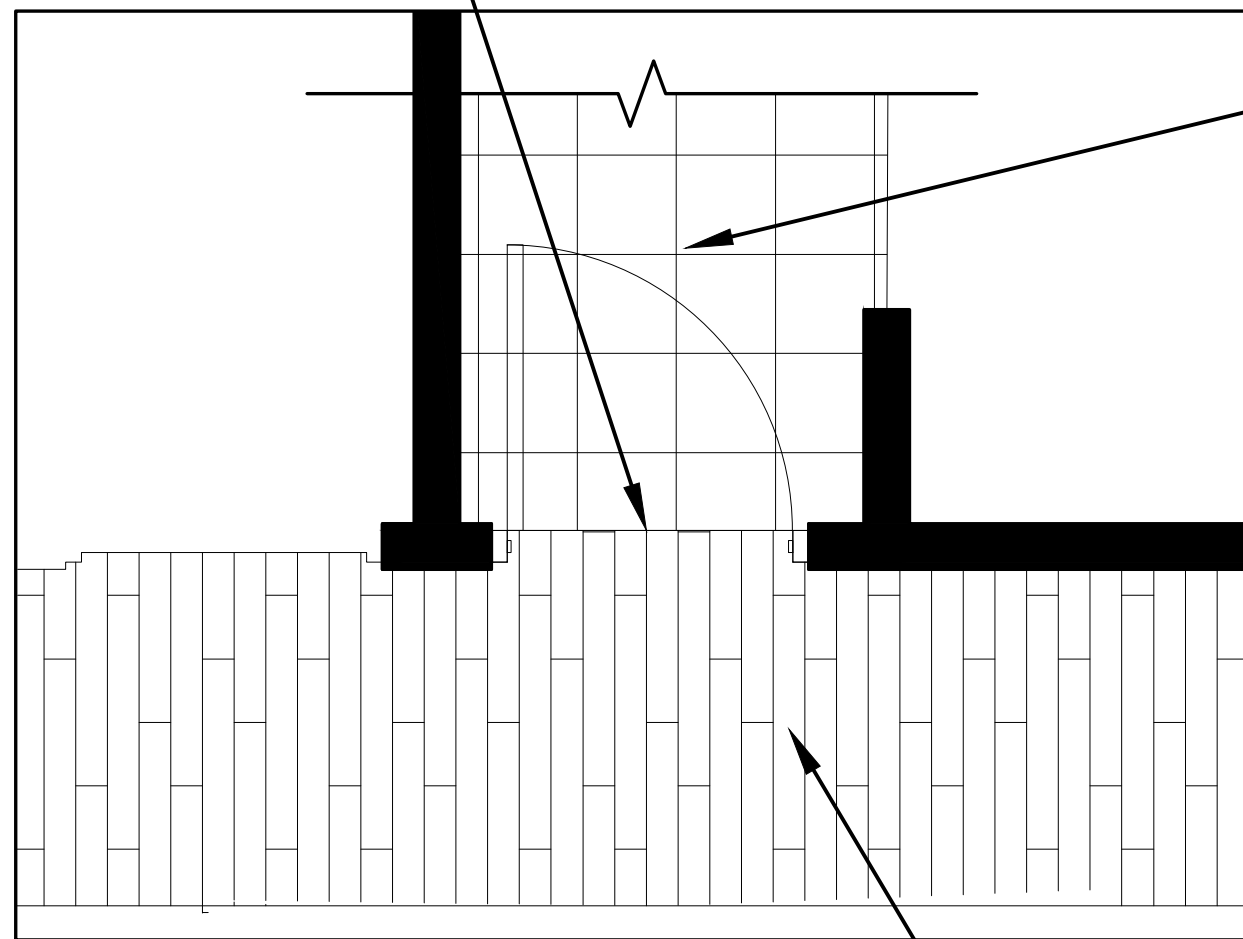


DOOR/DOOR FRAME & WINDOW FRAME FINISH SCHEDULE					
TAG	DOOR	FRAME	REMARKS		
01	3'-4", 3'-0", 2'-6"	7'-0"	NIC	PT-4	WOOD DOOR W/ METAL FRAME
02	3'-8", 3'-0"	7'-0"	PT-4	PT-4	METAL DOOR W/ METAL FRAME
03	6'-0"	7'-0"	PT-4	PT-4	DOUBLE METAL DOOR W/ METAL FRAME
04	6'-0"	7'-0"	PT-4	PT-4	DOUBLE WOOD DOOR W/ METAL FRAME
06	N/A	7'-0"	PT-4	PT-4	METAL FRAME ONLY
07	-	-	-	PT-4	*WINDOW METAL FRAME ONLY

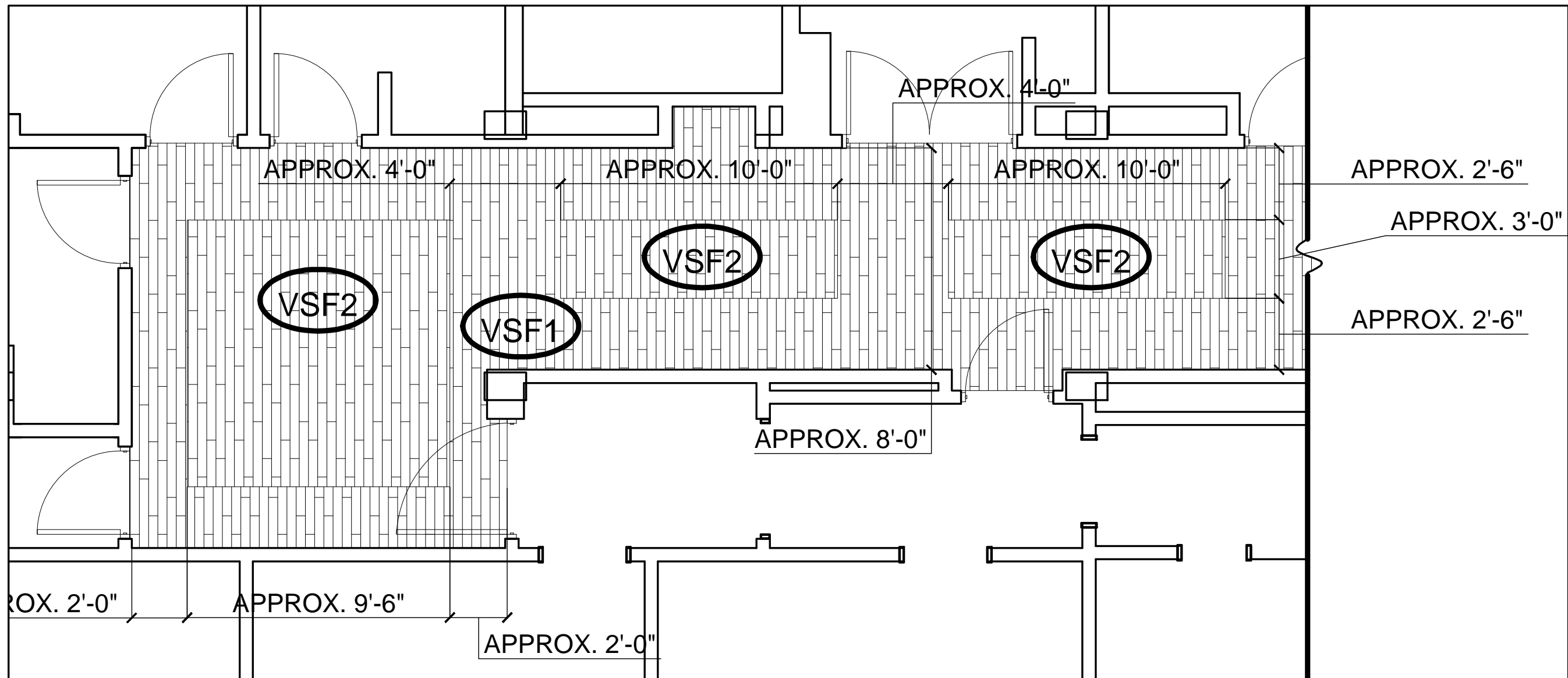
(E) VCT to butt joint with New Sheet Vinyl Flooring



FLOORING DETAIL

1/2" = 1'-0"

New Sheet Vinyl Flooring



FLOORING PATTERN

1/4" = 1'-0"

ROOM FINISH SCHEDULE NOTES:

ABBREVIATIONS:

E = EXISTING
U.N.O. = UNLESS NOTED OTHERWISE
NIC = NOT IN CONTRACT
TME = NEW TO MATCH EXISTING
ACT-1 = NEW ACOUSTIC CEILING TILE
VCT = VINYL COMPOSITION TILE
GCT = GLAZED COVE TILE
TERR = TERRAZZO

VSF-1 = SHEET VINYL FLOORING
WOOD PATTERN, TROPICAL BEECH/LIGHTER WOOD - PATTERN MUST BE SELECTED AND APPROVED BY VANHGS INTERIOR DESIGNER.

VSF-2 = SHEET VINYL FLOORING
WOOD PATTERN, DARK OAK/DOOR - CONTRASTING COLOR - PATTERN MUST BE SELECTED AND APPROVED BY VANHGS INTERIOR DESIGNER.

LCT-1 = LINOLEUM COMPOSITE TILE (WITH

RECYCLABLE CONTENT)

RCB-1 = RUBBER COVE BASE

PT-1 = SHERWIN WILLIAMS PAINT
SW 6135 ECRU OR EQUAL - EGGSHELL
FINISH / NO VOC PAINT ONLY

PT-2 = SHERWIN WILLIAMS PAINT
SW 6500 OPEN SEAS OR EQUAL - EGGSHELL
FINISH / NO VOC PAINT ONLY
*ACCENT WALLS ONLY

PT-3 = SHERWIN WILLIAMS PAINT
SW 7728 SPROUT OR EQUAL - EGGSHELL
FINISH / NO VOC PAINT ONLY
*ACCENT WALLS ONLY

PT-4 = CEILING PAINT- SHERWIN WILLIAMS

SW 7008 ALABASTER OR EQUAL - EGGSHELL
FINISH / NO VOC PAINT ONLY

PT-5 = DOOR FRAMES, WINDOW FRAMES,
AND ELEVATOR DOOR FRAMES.
COLOR: TBD TO MATCH RESILIENT RUBBER BASE COLOR
EGGSHELL FINISH / NO VOC PAINT ONLY

PT-6 = PAINTED COVED BASE COLOR - HIGH
PERFORMANCE COATING - COLOR: TBD TO
MATCH RESILIENT RUBBER BASE COLOR - EGGSHELL
FINISH / NO VOC PAINT ONLY

ALL INTERIOR FINISHES MUST BE APPROVED
BY VANHGS INTERIOR DESIGNER.

*OR EQUAL, THE INCLUSION OF A BRAND NAME AND
SPECIFIC COLOR IS FOR THE EXPRESS PURPOSE OF
OBTAINING THIS SPECIFIC COLOR, WHICH IS FURTHER
DEFINED BY ITS SALENT CHARACTERISTICS - HUE,
VALUE AND INTENSITY -
ANY OTHER COLOR MUST BE APPROVED BY VA
INTERIOR DESIGNER

FINISH GENERAL NOTES:

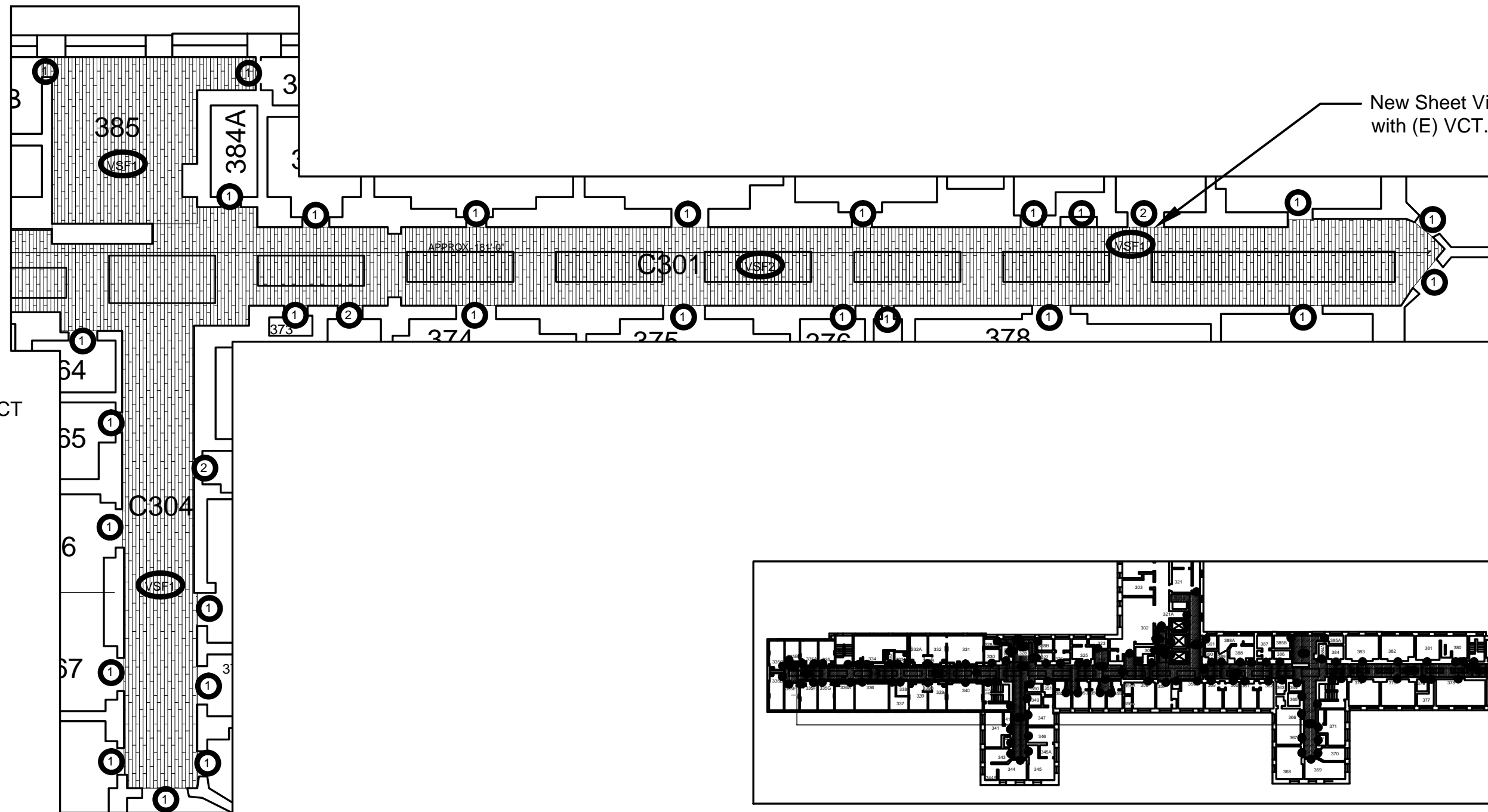
- COVER AND PROTECT FROM PAINT: CORNER GUARDS, HANDRAILS, BUILT-IN CABINETS (I.E. FIRE EXTINGUISHERS, FIRE ALARM CABINETS, ETC.), OUTLETS (ELECTRICAL AND DATA), COVER PLATES, PULL STATIONS, ETC.
- PATCH AND REPAIR ALL WALLS PRIOR TO PAINTING.
- PAINT ALL WALL SURFACES (NEW AND EXISTING), PLASTER/GYPSUM CEILINGS AND BULK HEADS, PLASTER/GYPSUM WINDOW SILLS, NOTED DOORS, AND ALL DOOR FRAMES AS NOTED ON THE ROOM FINISH SCHEDULE. PREP SURFACES PER MANUFACTURERS' RECOMMENDATIONS.
- ONE (1) COAT PRIME
- TWO (2) COATS PAINT
- DO NOT REMOVE OR PAINT RATING TAGS ON DOORS AND/OR DOOR FRAMES
- PROTECT ALL DOOR HARDWARE FROM PAINT.
- CEILING GRID TO REMAIN UNDAMAGED AND UNALTERED. (EXCEPT 5TH FLOOR DEMO) PROTECT FROM PAINT.
- REMOVE ALL EXISTING DOOR SILENCERS AND REPLACE WITH NEW AFTER PAINTING OF ALL DOOR FRAMES. INSTALL NEW IN ALL LOCATIONS THAT OLD WAS REMOVED.
- ALL DIMENSIONS ARE APPROXIMATE. CONTRACTOR TO FIELD VERIFY.

FINISH PLAN NOTES:

- PAINT ENTIRE DOOR FRAME AND/OR WINDOW FRAME (INSIDE AND OUT). PREP PER PAINT MANUFACTURERS' RECOMMENDATIONS.
- PAINT ENTIRE DOOR AND ENTIRE DOOR FRAME. PREP PER PAINT MANUFACTURERS' RECOMMENDATIONS.
- PREP AND PAINT ELEVATOR DOOR FRAMES (FRAMES ONLY).
- USE NO VOC PAINT ONLY.

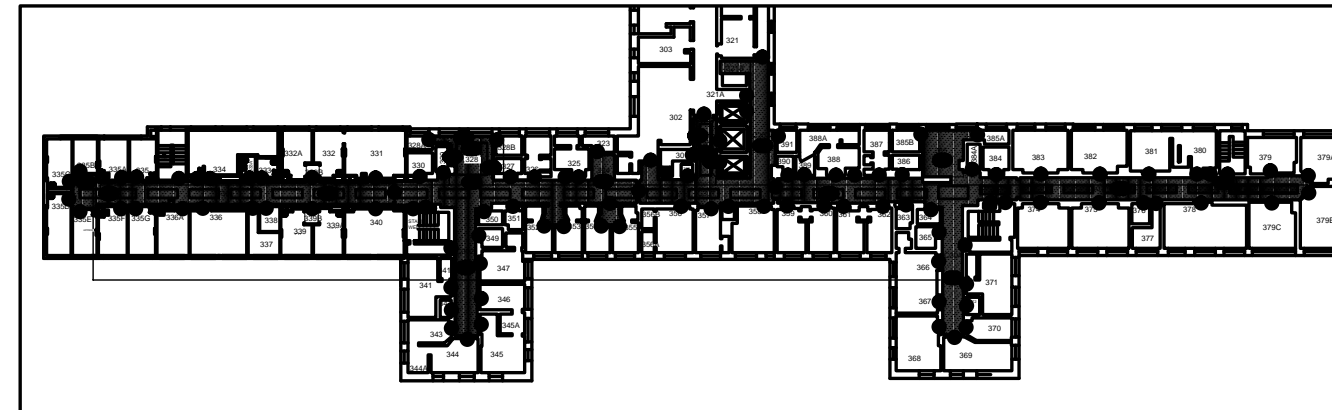
FLOORING NOTES:

- PREPARE FLOOR: PROVIDE AND INSTALL VINYL SHEET GOODS WITH BREAK PATTERN ON CORRIDORS AS INDICATED. CONTRACTOR TO FIELD VERIFY.
- PROVIDE AND INSTALL FLOOR LEVELING COMPOUND AS NECESSARY TO PREPARE THE FLOOR TO RECEIVE NEW FINISHES.
- PROVIDE AND INSTALL NEW RUBBER COVE BASE (RCB) - CONTRACTOR TO FIELD VERIFY.
- PROVIDE AND INSTALL MANUFACTURER RECOMMENDED TRANSITIONS WHERE NEW SHEET FLOORING MEETS EXISTING CARPET FLOORING.
- USE WATER-BASED MASTIC ADHESIVES.
- REDUCE OUTGASSING OF SHEET VINYL FLOORING AND RUBBER BASE BY UNROLLING IT OUTDOORS/VENTILATED AREA PRIOR TO ON SITE INSTALLATION.



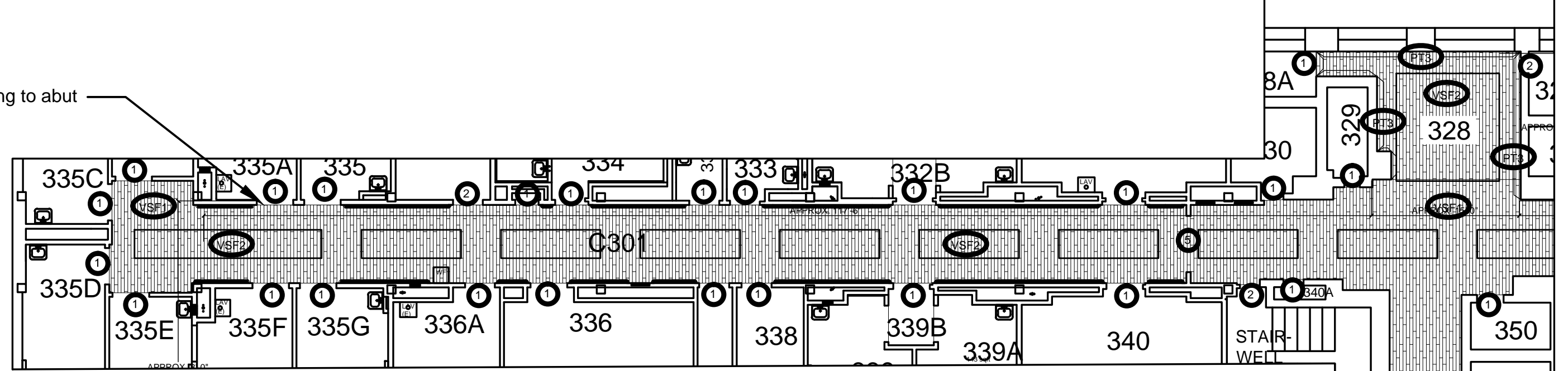
PARTIAL FINISH PLAN - THIRD FLOOR - EAST CORRIDOR

3/32" = 1'-0"



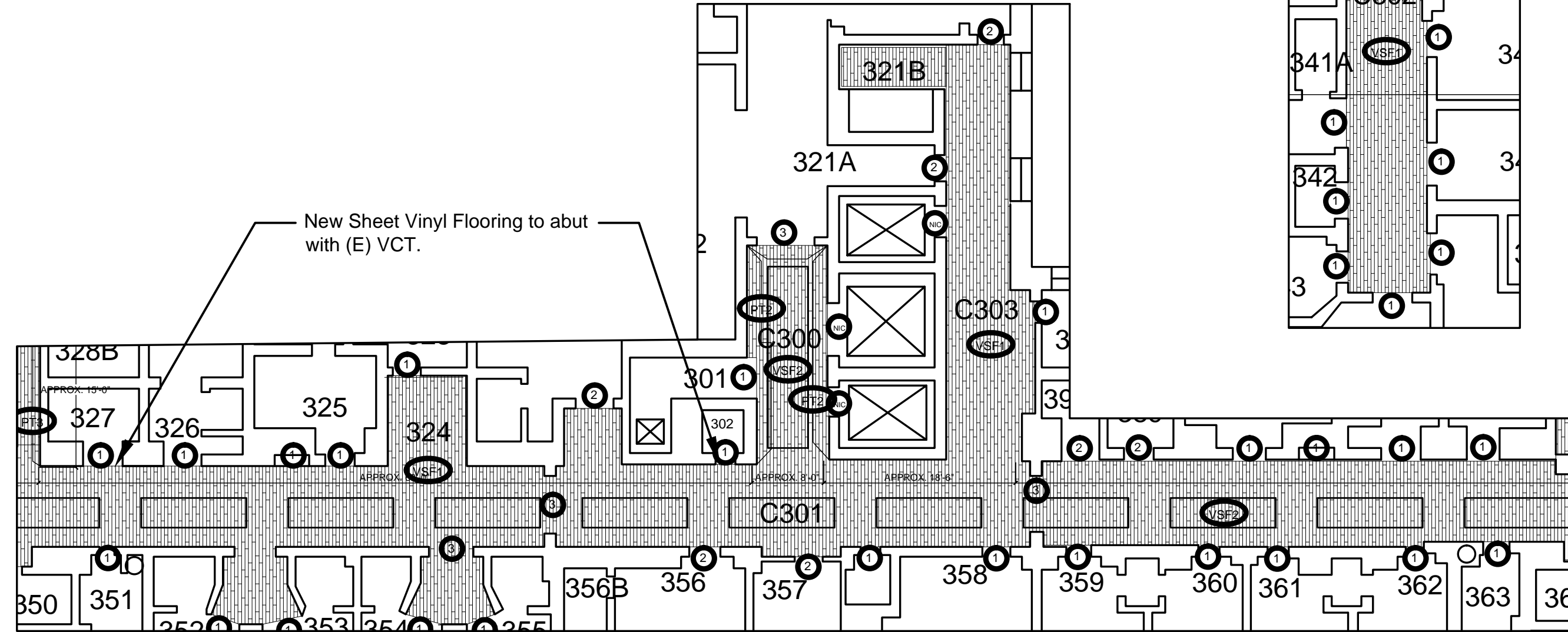
KEY PLAN

1/64" = 1'-0"



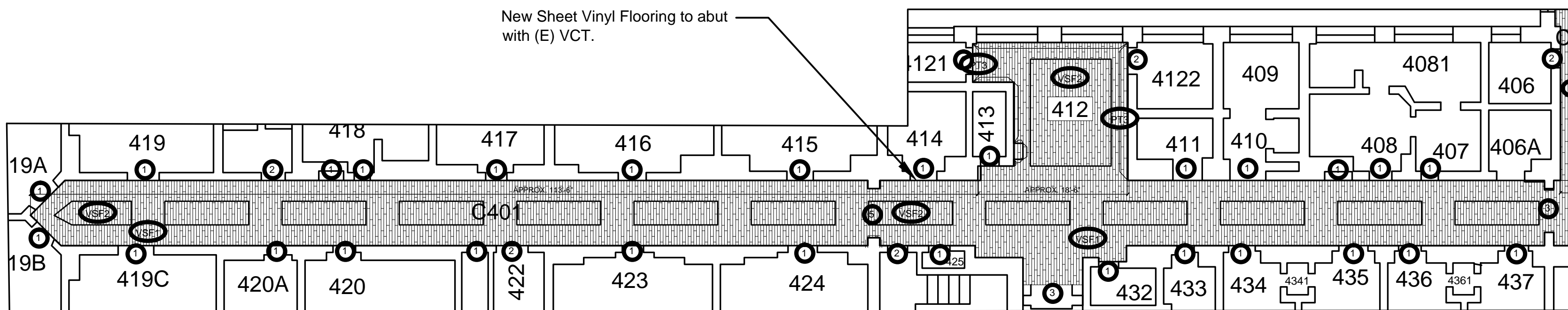
PARTIAL FINISH PLAN - THIRD FLOOR - WEST CORRIDOR

3/32" = 1'-0"



PARTIAL FINISH - PLAN THIRD FLOOR

3/32" = 1'-0"



PARTIAL FINISH PLAN - FOURTH FLOOR - WEST CORRIDOR